

STATE OF ILLINOIS  
DEPARTMENT OF TRANSPORTATION  
DIVISION OF HIGHWAYS

**PROPOSED  
HIGHWAY PLANS**

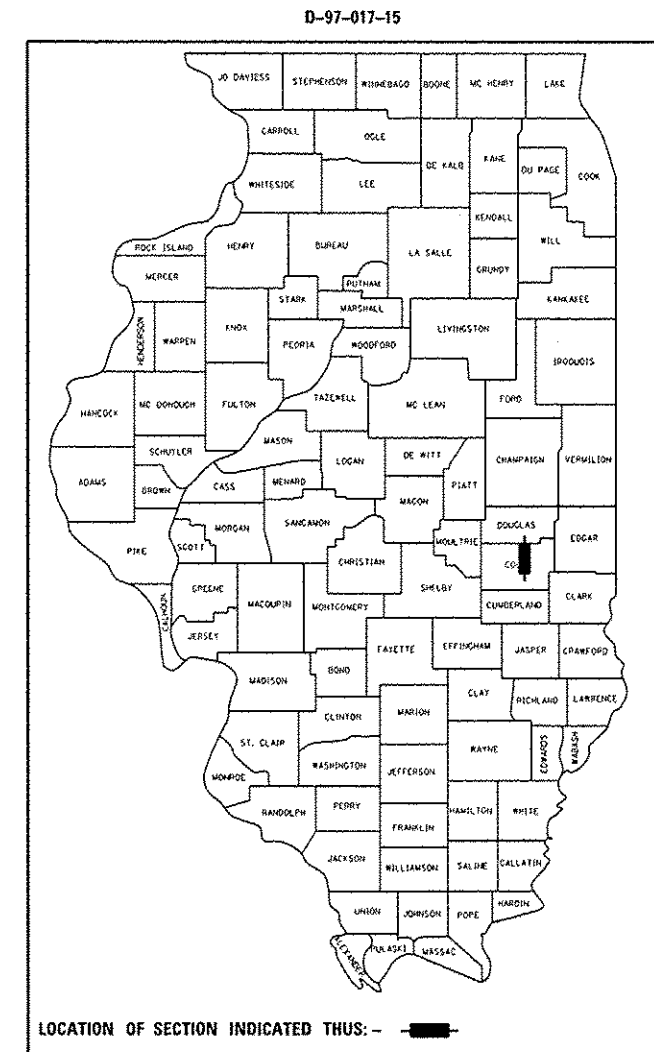
FAP ROUTE 820 (IL 130)  
SECTION D7 HMA SAFETY SHLD 2016-2  
PROJECT ACHSIP-0820 (014)  
NEW SHOULDERS, SAFETY IMPROVEMENTS  
COLES COUNTY

C-97-029-15

F.A.P. RTE.	SECTION	COUNTY	TOTAL SHEETS	SHEET NO.
820		COLES	7	1
		ILLINOIS	CONTRACT NO. 74712	

\*07 HMA SAFETY SHLD 2016-2

FOR INDEX OF SHEETS, SEE SHEET NO. 2

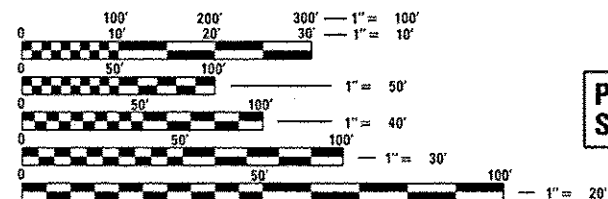
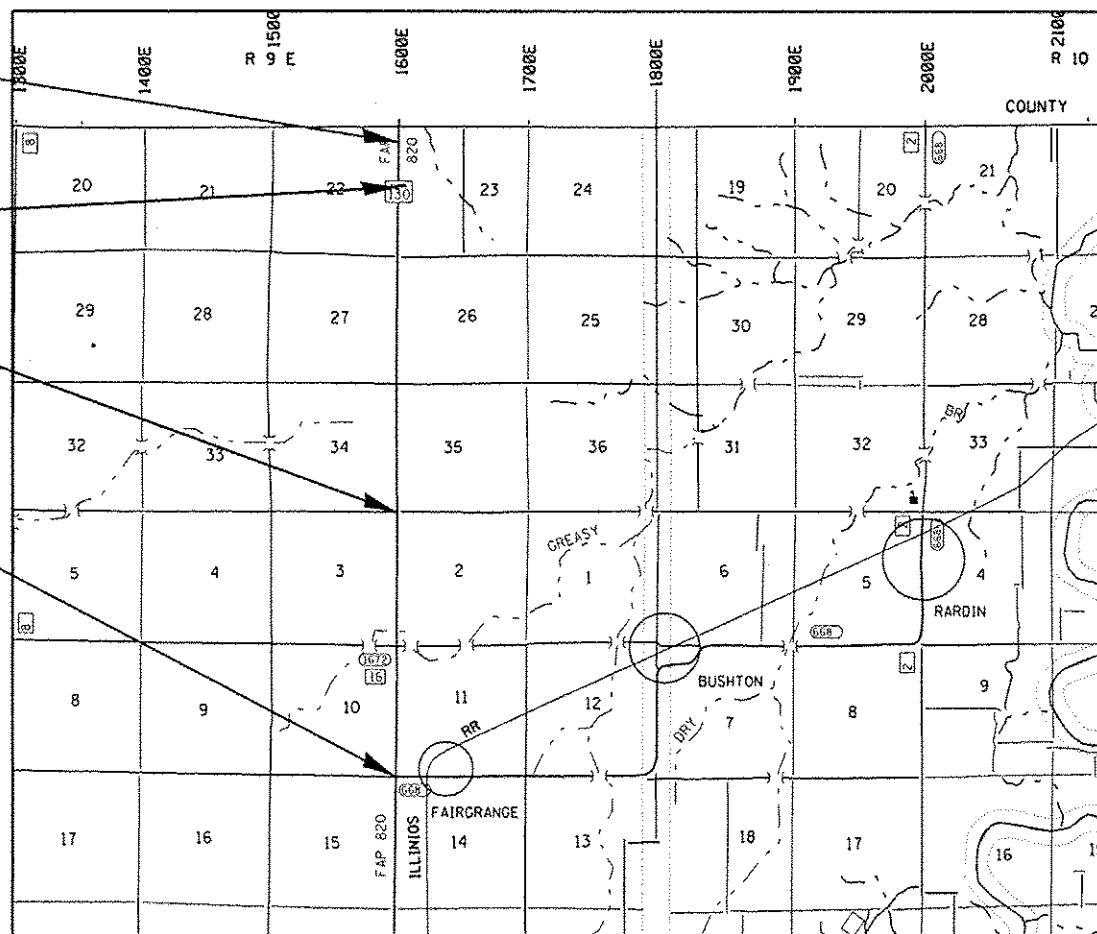


PROJECT ENDS  
STA 109+66

STATION EQUATION  
756+46(BK) = 100+00(AH)

STATION EQUATION  
116+00(BK) = 608+00(AH)

PROJECT BEGINS  
STA 8+50



FULL SIZE PLANS HAVE BEEN PREPARED USING STANDARD ENGINEERING SCALES. REDUCED SIZED PLANS WILL NOT CONFORM TO STANDARD SCALES. IN MAKING MEASUREMENTS ON REDUCED PLANS, THE ABOVE SCALES MAY BE USED.

J.U.L.I.E.  
JOINT UTILITY LOCATION INFORMATION FOR EXCAVATION  
1-800-892-0123  
OR 811

PROJECT ENGINEER: MARK DAUGHERTY  
PROJECT MANAGER: SOLOMON DZAKUMA

GROSS LENGTH = 26,562 FT. = 5.031 MILE  
NET LENGTH = 25,978 FT. = 4.920 MILE

CONTRACT NO. 74712

STATE OF ILLINOIS  
DEPARTMENT OF TRANSPORTATION  
DIVISION OF HIGHWAYS

SUBMITTED OCTOBER 15 2015

*Roy L. Drishell*  
DEPUTY DIRECTOR OF HIGHWAYS, REGION ENGINEER

Dec 4 2015  
*John D. Baranzelli*  
ENGINEER OF DESIGN AND ENVIRONMENT

Dec 4 2015  
*Omer Osman P.E.*  
DIRECTOR OF HIGHWAYS, CHIEF ENGINEER

PRINTED BY THE AUTHORITY  
OF THE STATE OF ILLINOIS

GENERAL NOTES

THIS SECTION SHALL BE CONSTRUCTED IN ACCORDANCE WITH THE PLANS. THE STANDARD SPECIFICATIONS FOR ROAD AND BRIDGE CONSTRUCTION", ADOPTED JANUARY 1, 2012; THE "SUPPLEMENTAL SPECIFICATIONS AND RECURRING SPECIAL PROVISIONS" INDICATED ON THE CHECK SHEET, AND "THE SPECIAL PROVISIONS" INCLUDED IN THE PROPOSAL.

THE WORK INCLUDED IN THIS SECTION CONSISTS OF PLACING HMA SAFETY SHOULDER, AGGREGATE WEDGE SHOULDER, RUMBLE STRIPS, PAVEMENT MARKING AND OTHER WORK NECESSARY TO COMPLETE THIS SECTION. THE PROJECT IS LOCATED ON IL 130 AND EXTENDS FROM THE DOUGLAS COUNTY LINE TO FAIRGRANGE ROAD.

THE CONTRACTOR SHALL PROVIDE INTERNET ACCESS TO THE HOT-MIX ASPHALT PLANT QUALITY CONTROL LAB SO THAT HOT-MIX ASPHALT PLANT REPORTS CAN BE E-MAILED TO THE DISTRICT HEADQUARTERS. THIS WORK SHALL BE INCLUDED IN THE COST OF HOT-MIX ASPHALT ITEMS.

THE MATERIAL USED FOR AGGREGATE WEDGE SHOULDER, TYPE B, SHALL BE CRUSHED STONE, CRUSHED CONCRETE OR RAP.

THE MATERIAL EXCAVATED FOR THE CONSTRUCTION OF THE HMA SHOULDERS SHALL BE REMOVED FROM THE PROJECT ACCORDING TO ARTICLE 202.03 OF THE STANDARD SPECIFICATIONS. THE REMOVAL OF THE EXCAVATED MATERIAL SHALL BE INCLUDED IN THE CONTRACT UNIT PRICE PER UNIT FOR EXCAVATING AND GRADING EXISTING SHOULDER.

REMOVE PAVED SHOULDER AT ALL FIELD ENTRANCES AND REPLACE WITH HMA SHOULDERS 8". EXISTING PAVED SHOULDER IS ESTIMATED TO BE 8 INCHES. THIS WORK WILL BE PAID FOR AS PAVED SHOULDER REMOVAL.

OMIT RUMBLE STRIPS ON ALL SIDEROADS AND COMMERCIAL ENTRANCES AT RADIUS RETURNS. OMIT RUMBLE STRIPS AT MAILBOX TURNOUTS 60' BOTH SIDES OF THE MAILBOX OR AS DETERMINED BY THE ENGINEER. OMIT HOT-MIX ASPHALT SHOULDERS, 8" ON ALL HMA AND PCC SIDEROADS AND ENTRANCES.

THE TOTAL QUANTITY OF PAINT PAVEMENT MARKING - LINE 4" CONSISTS OF 52,014 FEET OF WHITE.

THE FOLLOWING MIXTURE REQUIREMENTS ARE APPLICABLE TO THIS PROJECT:

MIXTURE USE: HMA SHOULDERS, 8" (BOTTOM 6" LIFT)  
 APPLICATION: HOT-MIX ASPHALT SHOULDERS  
 PG GRADE: PG 64-22  
 DESIGN AIR VOIDS: 4.0% @ NDESIGN = 30  
 MIXTURE COMPOSITION: IL-19.0L  
 FRICTION AGGREGATE: N/A

MIXTURE USE: HMA SHOULDERS, 8" (TOP 2" LIFT)  
 APPLICATION: HOT-MIX ASPHALT SHOULDERS  
 PG GRADE: PG 64-22  
 DESIGN AIR VOIDS: 4.0% @ NDESIGN = 30  
 MIXTURE COMPOSITION: IL-9.5L  
 FRICTION AGGREGATE: N/A

INDEX OF SHEETS

SHEET NO.	TITLE
1	COVER SHEET
2	INDEX OF SHEETS & GENERAL NOTES
3	SUMMARY OF QUANTITIES
4	TYPICAL SECTIONS
5	SCHEDULE
6	PLAN SHEET
7	SURVEY TIES

THE FOLLOWING STANDARDS ARE A PART OF THESE PLANS AND ARE INCLUDED AFTER SHEET NO. 7:

000001-06	STANDARD SYMBOLS, ABBREVIATIONS AND PATTERNS
642006	SHOULDER RUMBLE STRIPS, 8 IN.
701011-04	OFF-ROAD MOVING OPERATIONS, 2L, 2W, DAY ONLY
701301-04	LANE CLOSURE, 2L, 2W, SHORT TIME OPERATIONS
701306-03	LANE CLOSURE, 2L, 2W, SLOW MOVING OPERATIONS DAY ONLY, FOR SPEEDS >= 45 MPH
701311-03	LANE CLOSURE, 2L, 2W, MOVING OPERATIONS - DAY ONLY
701326-04	LANE CLOSURE, 2L, 2W, PAVEMENT WIDENING, FOR SPEEDS >= 45 MPH
701901-04	TRAFFIC CONTROL DEVICES

FILE NAME =	USER NAME = staffernk	DESIGNED -	REVISED -	<b>STATE OF ILLINOIS DEPARTMENT OF TRANSPORTATION</b>	<b>GENERAL NOTES &amp; INDEX OF SHEETS</b>	F.A.P. RTE.	SECTION	COUNTY	TOTAL SHEETS	SHEET NO.
path\IL884EBID\INTEG\Illinois.gov\PIDOT\Documents\DOT Offices\District 7\Projects\7472\BANK\CAD\aseta\0774712-shrtgannote.dwg	2015/10/16	2015/10/16	2015/10/16			820	-	COLES	7	2
PLOT SCALE = 1/8" = 1' / in.	CHECKED -	REVISED -	REVISED -			*DT HMA SAFETY SHLD 2016-2	CONTRACT NO. 74712		ILLINOIS FED. AID PROJECT	
Default	PLOT DATE = 10/16/2015	DATE -	REVISED -			SCALE:	SHEET	OF	SHEETS	STA.

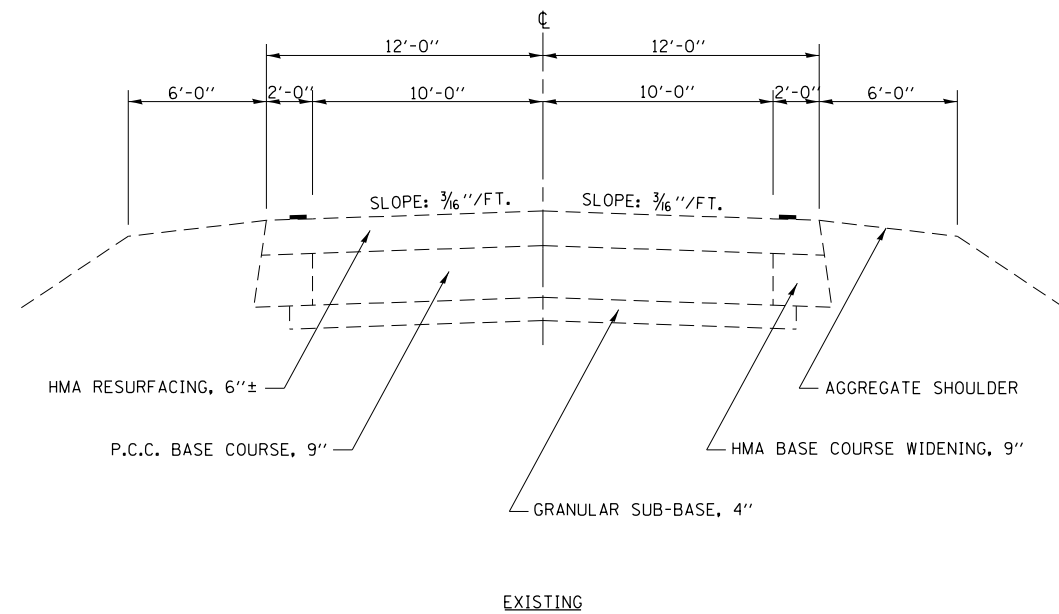
90% FED  
10% STATE

SUMMARY OF QUANTITIES			TOTAL QUANTITIES	CONSTRUCTION TYPE CODE		
CODE NO	ITEM	UNIT		0021		
20200600	EXCAVATING AND GRADING EXISTING SHOULDER	UNIT	520	520		
44004250	PAVED SHOULDER REMOVAL	SQ YD	208	208		
48102100	AGGREGATE WEDGE SHOULDER, TYPE B	TON	1975	1975		
48203029	HOT-MIX ASPHALT SHOULDERS, 8"	SQ YD	17338	17338		
64200108	SHOULDER RUMBLE STRIPS, 8 INCH	FOOT	52014	52014		
67100100	MOBILIZATION	L SUM	1	1		
70100460	TRAFFIC CONTROL AND PROTECTION, STANDARD	LSUM	1	1		
	701306					
70100500	TRAFFIC CONTROL AND PROTECTION, STANDARD	L SUM	1	1		
	701326					
70103815	TRAFFIC CONTROL SURVEILLANCE	CAL DA	20	20		
78001110	PAINT PAVEMENT MARKING - LINE 4"	FOOT	52014	52014		
X7015005	CHANGEABLE MESSAGE SIGN	CAL DA	28	28		
Z0049799	PROTECTING OR RESETTING SURVEY MARKERS	EACH	3	3		

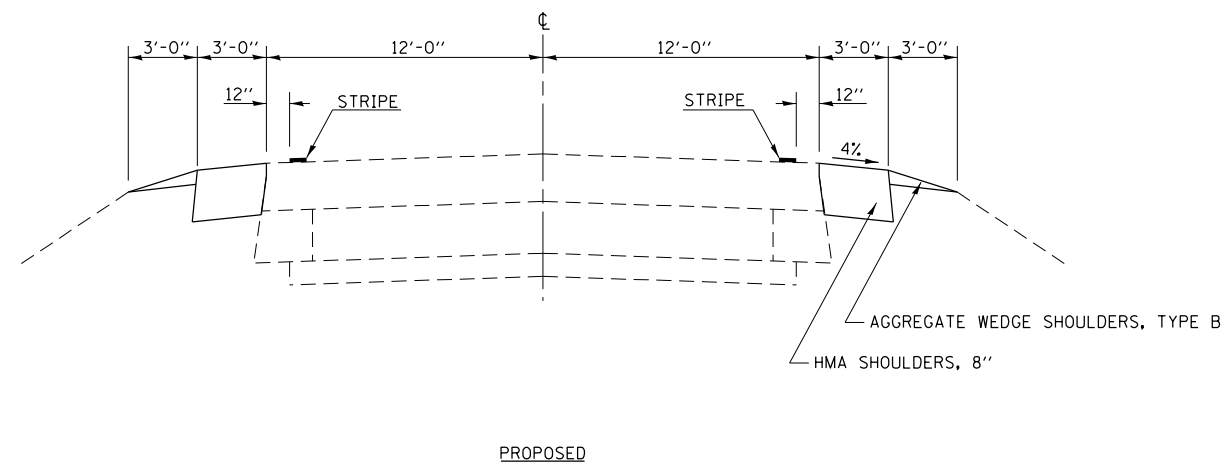
12

\* SPECIALTY ITEM

FILE NAME =	USER NAME = staffernk	DESIGNED -	REVISED -	<b>STATE OF ILLINOIS DEPARTMENT OF TRANSPORTATION</b>	<b>SUMMARY OF QUANTITIES</b>	F.A.P. RTE.	SECTION	COUNTY	TOTAL SHEETS	SHEET NO.	
g:\1\284EB\INTEG\Illinois.gov\1007\Documents\DOT Offices\District 7\Projects\747208\Drawings\CA\Drawings\0774712-shl-a00.dgn	2016/06/16	CHECKED -	REVISED -			820	-	COLES	7	3	
Default	PLOT SCALE = 1/8" = 1' / in.	DATE -	REVISED -			*DT HMA SAFETY SHLD 2016-2 CONTRACT NO. 74712					
	PLOT DATE = 10/16/2015					ILLINOIS FED. AID PROJECT					



EXISTING



PROPOSED

FILE NAME =	USER NAME = steffenmk	DESIGNED -	REVISED -
pw:\IL\084EBIDINTEG.illinois.gov\PWIDOT\Documents\DOT Offices\District 7\Projects\7472015\Drawings\CADsheets\0774712-sh-typical.dwg		DRAWN -	REVISED -
Default	PLOT SCALE = 100.0000' / in.	CHECKED -	REVISED -
	PLOT DATE = 10/16/2015	DATE -	REVISED -

**STATE OF ILLINOIS  
DEPARTMENT OF TRANSPORTATION**

**TYPICAL SECTIONS**

SCALE: SHEET OF SHEETS STA. TO STA.

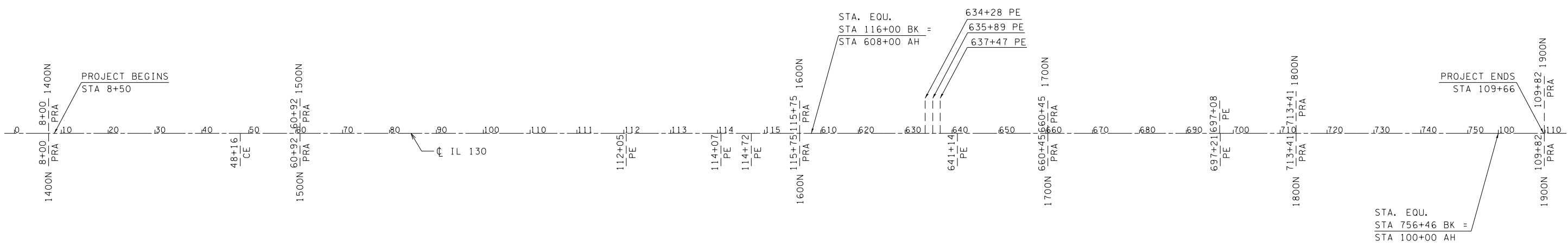
F.A.P. RTE.	SECTION	COUNTY	TOTAL SHEETS	SHEET NO.
820	•	COLES	7	4
•D7 HMA SAFETY SHLD 2016-2		CONTRACT NO. 74712		
ILLINOIS FED. AID PROJECT				

SCHEDULE OF QUANTITIES

			20200600 EXCAVATING AND GRADING EXISTING SHOULDERS	48102100 AGGREGATE WEDGE SHOULDERS	48203029 HOT-MIX ASPHALT SHOULDERS 8"	64200108 SHOULDER RUMBLE STRIPS, 8"	78001110 PAINT PAVEMENT MARKING LINE 4 INCH	DESCRIPTION
			QUANTITY	QUANTITY	QUANTITY	QUANTITY	QUANTITY	
LEFT SIDE			UNIT	TON	SQ YD	FOOT	FOOT	
FROM	TO	LENGTH FT						
8+50	59+82	5132	51.32	194.83	1710.67	5132	5132	HMA SHOULDER
59+82	62+02	220						PRA 1500N Sta 60+92
62+02	115+50	5348	53.48	203.03	1782.67	5348	5348	HMA SHOULDER
115+50	116+00	50						PRA 1600N Sta 115+75
608+00	634+10	2610	26.1	99.08	870	2610	2610	HMA SHOULDER
634+10	634+46	36						PE Sta 634+28
634+46	635+71	125	1.25	4.75	41.67	125	125	HMA SHOULDER
635+71	636+07	36						PE Sta 635+89
636+07	637+32	125	1.25	4.75	41.67	125	125	HMA SHOULDER
637+32	637+62	30						PE Sta 637+47
637+62	660+15	2253	22.53	85.53	751	2253	2253	HMA SHOULDER
660+15	660+75	60						PRA 1700N Sta 660+45
660+75	696+94	3619	36.19	137.39	1206.33	3619	3619	HMA SHOULDER
696+94	697+22	28						PE Sta 697+08
697+22	713+08	1586	15.86	60.21	528.67	1586	1586	HMA SHOULDER
713+08	713+74	66						PRA 1800N Sta 713+41
713+74	756+46	4272	42.72	162.18	1424	4272	4272	HMA SHOULDER
100+00	109+66	966	9.66	36.67	322	966	966	HMA SHOULDER
SUB TOTALS			260.36	988.42	8678.68	26036	26036	
TOTALS			520	1975	17338	52014	52014	

SCHEDULE OF QUANTITIES

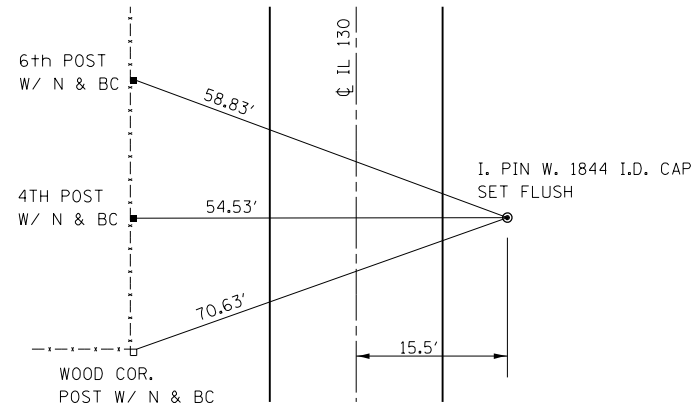
			20200600 EXCAVATING AND GRADING EXISTING SHOULDERS	48102100 AGGREGATE WEDGE SHOULDERS	48203029 HOT-MIX ASPHALT SHOULDERS 8"	64200108 SHOULDER RUMBLE STRIPS, 8"	78001110 PAINT PAVEMENT MARKING LINE 4 INCH	DESCRIPTION
			QUANTITY	QUANTITY	QUANTITY	QUANTITY	QUANTITY	
RIGHT SIDE			UNIT	TON	SQ YD	FOOT	FOOT	
FROM	TO	LENGTH FT						
8+50	47+98	3948	39.48	149.88	1316	3948	3948	HMA SHOULDER
47+98	48+34	36						CE Sta 48+16
48+34	59+82	1148	11.48	43.58	382.67	1148	1148	HMA SHOULDER
59+82	62+02	220						PRA 1500N Sta 60+92
62+02	111+92	4990	49.9	189.44	1663.33	4990	4990	HMA SHOULDER
111+92	112+18	26						PE Sta 112+05
112+18	113+94	176	1.76	6.68	58.67	176	176	HMA SHOULDER
113+94	114+20	26						PE Sta 114+07
114+20	114+60	40	0.4	1.52	13.33	40	40	HMA SHOULDER
114+60	114+84	24						PE Sta 114+72
114+84	115+50	66	0.66	2.51	22	66	66	HMA SHOULDER
115+50	116+00	50						PRA 1600N Sta 115+75
608+00	641+02	3302	33.02	125.35	1100.67	3302	3302	HMA SHOULDER
641+02	641+26	24						PE Sta 641+14
641+26	660+15	1889	18.89	71.71	629.67	1889	1889	HMA SHOULDER
660+15	660+75	60						PRA 1700N Sta 660+45
660+75	696+95	3620	36.2	137.43	1206.67	3620	3620	HMA SHOULDER
696+95	697+47	52						PE Sta 697+21
697+47	713+08	1561	15.61	59.26	520.33	1561	1561	HMA SHOULDER
713+08	713+74	66						PRA 1800N Sta 713+41
713+74	756+46	4272	42.72	162.18	1424	4272	4272	HMA SHOULDER
100+00	109+66	966	9.66	36.67	322	966	966	HMA SHOULDER
SUB TOTALS			259.78	986.21	8659.34	25978	25978	



FILE NAME =	USER NAME = steffenmk	DESIGNED -	REVISED -	<b>STATE OF ILLINOIS DEPARTMENT OF TRANSPORTATION</b>	<b>PLAN SHEET</b>			F.A.P. RTE.	SECTION	COUNTY	TOTAL SHEETS	SHEET NO.
pw:\IL084EBIDINTEG\illinois.gov\PIWIDOT\Documents\IDOT Offices\District 7\Projects\7472\Drawings\CAD\Sheets\0774712-sht-plan.dgn	2015/10/16	2015/10/16	2015/10/16					820	•	COLES	7	6
Default	PLOT SCALE = 100.0000' / in.	CHECKED -	REVISED -		•D7 HMA SAFETY SHLD 2016-2			CONTRACT NO. 74712				
	PLOT DATE = 10/16/2015	DATE -	REVISED -		SCALE:	SHEET OF SHEETS	STA. TO STA.	ILLINOIS FED. AID PROJECT				

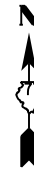
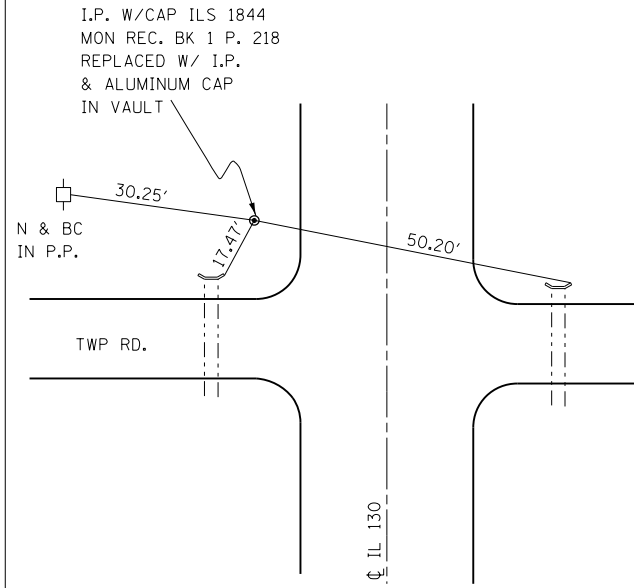
1

903  
WEST 1/4 COR. SEC 26  
T14N, R9E OF 3RD P.M.



2

904  
NW COR. SEC. 35-14-9

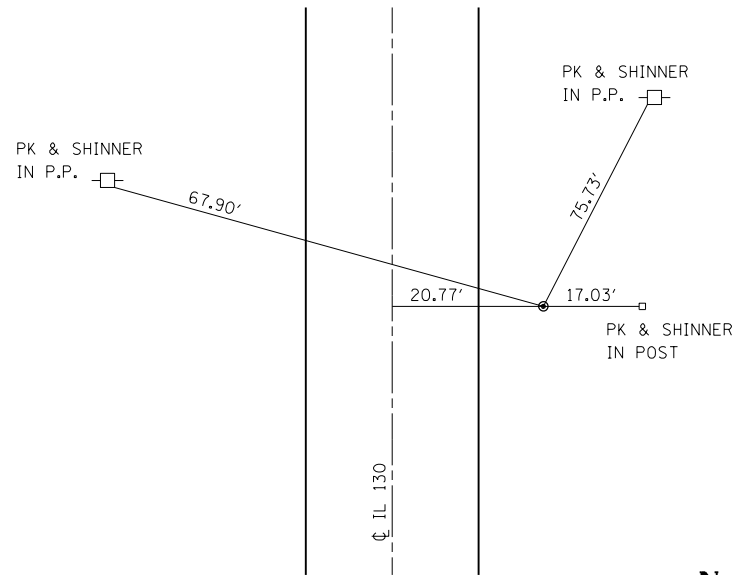


Schedule of Existing Section Corners and Monuments

Station	Off-Set	Description	Point
87+20	15.5' Rt	IP Found W 1/4 Corner 26-14N--9E Buried +/- 8"	903
60+75	13' Lt	IP Found w/Alum. Cap In Vault NW Corner 35-14N-9E	904
34+45	21' Rt	IP Found W 1/4 Corner 11-13N-9E	909

3

909  
WEST 1/4 CORNER  
I.P. SET IPLS #2731



FILE NAME =	USER NAME = steffenmk	DESIGNED -	REVISED -
p:\IL\084EBIDINTEG\Illinois.gov\PWIDOT\Documents\DOT Offices\District 7\Projects\7472\Drawings\CADsheets\0774712-sht-ties.dgn		2015/10/16	
Default	PLOT SCALE = 100.0000' / in.	CHECKED -	REVISED -
	PLOT DATE = 10/16/2015	DATE -	REVISED -

STATE OF ILLINOIS  
DEPARTMENT OF TRANSPORTATION

SURVEY TIES

SCALE: SHEET OF SHEETS STA. TO STA.

F.A.P. RTE.	SECTION	COUNTY	TOTAL SHEETS	SHEET NO.
820		COLES	7	7
*07 HMA SAFETY SHLD 2016-2		CONTRACT NO. 74712		
ILLINOIS FED. AID PROJECT				