

LETTING DATE - JANUARY 15, 2010
LETTING ITEM NO. - ITEM 1A
CONTRACT NO. - C1002

TOTAL SHEETS - 6

CAIRO REGIONAL AIRPORT

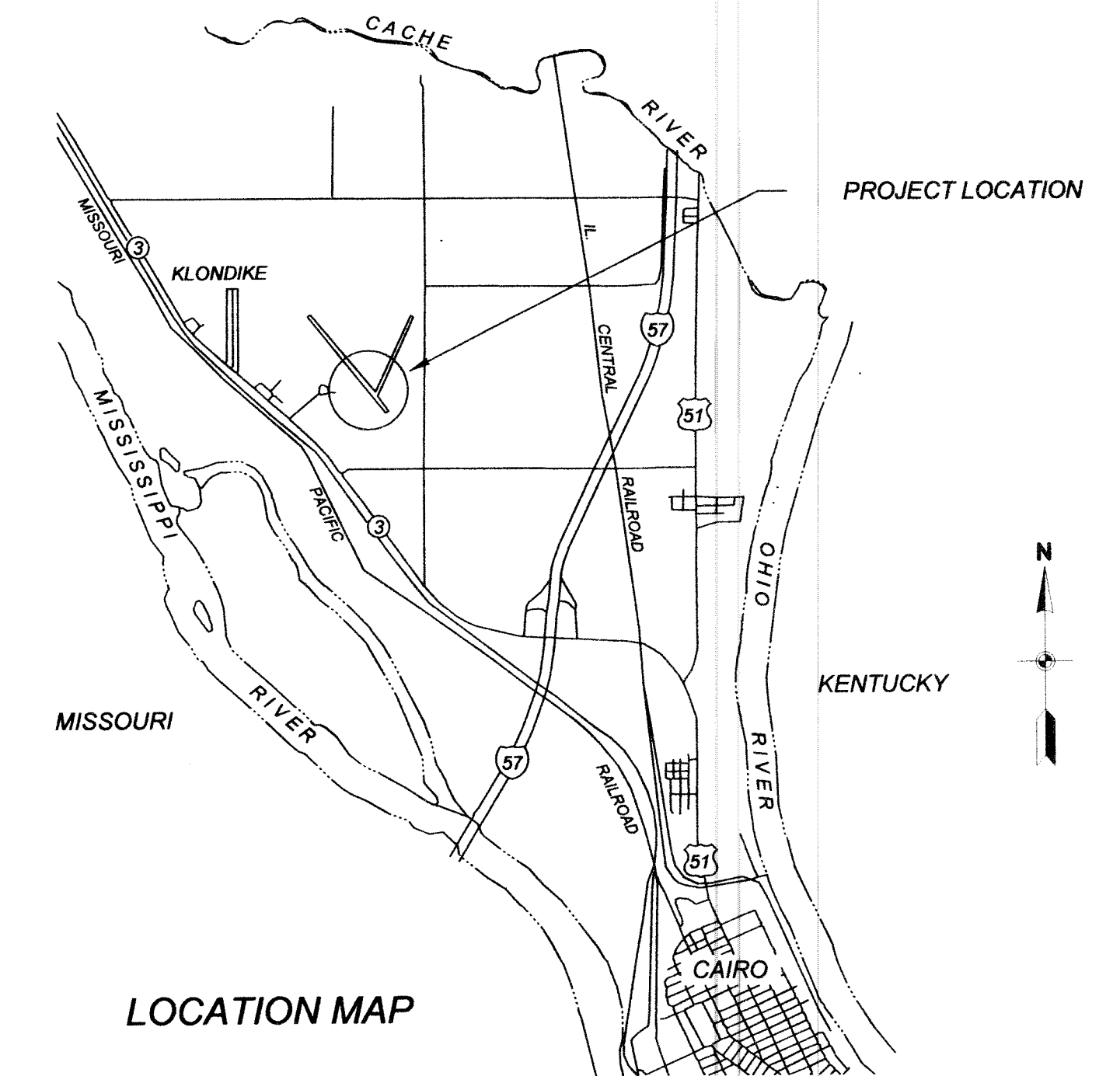
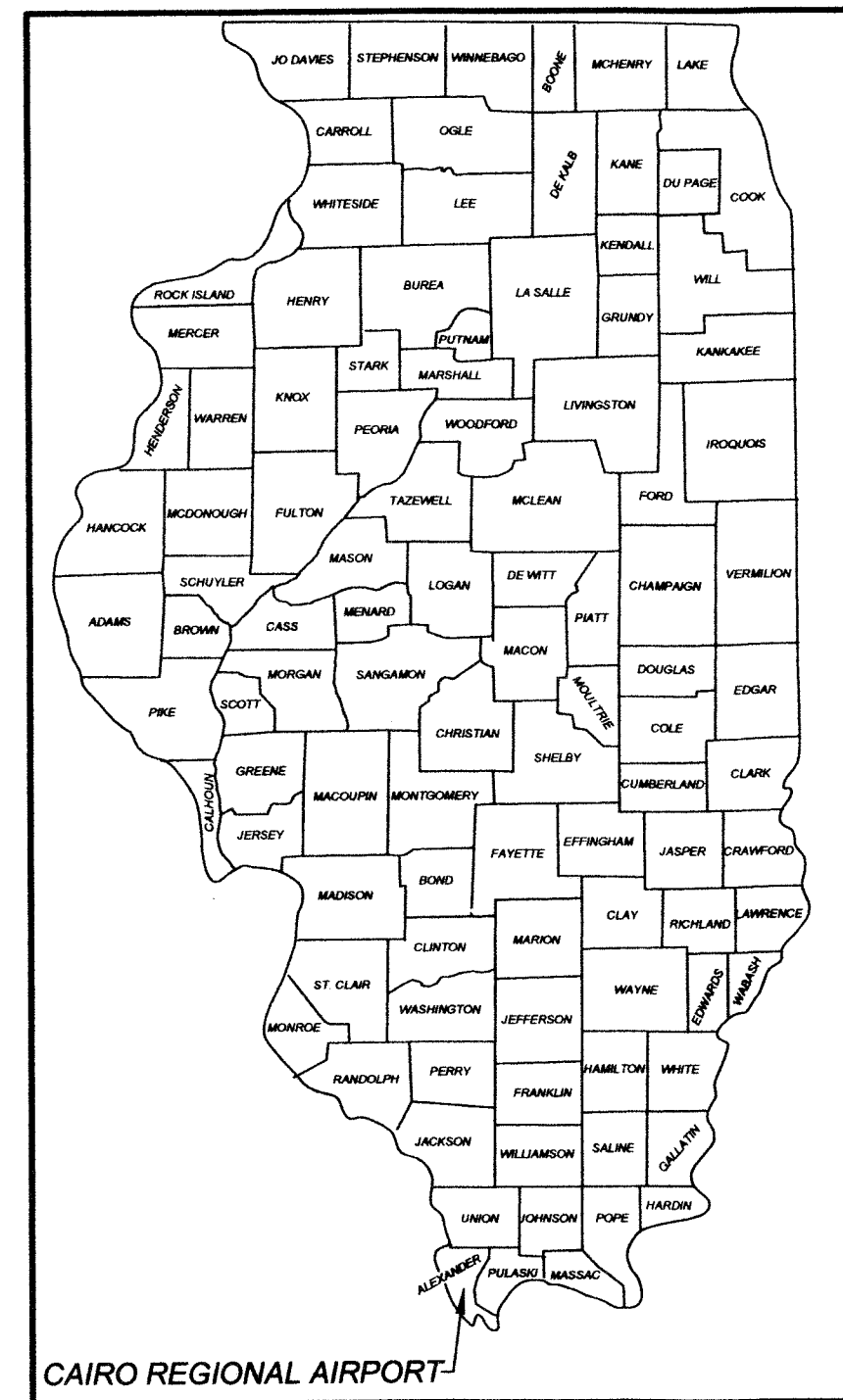
CAIRO - ALEXANDER COUNTY, ILLINOIS

AIRPORT TYPE: BASIC UTILITY

AIRPORT PAVEMENT MARKING

ILLINOIS PROJECT NO. CIR-3944
A.I.P. PROJECT NO. 3-17-0007-B11

LATITUDE 37°03'52"
LONGITUDE 89°13'04"
ELEVATION 321 MSL



DATE OF PLANS: OCTOBER 1, 2009

ALEXANDER COUNTY
AIRPORT AUTHORITY

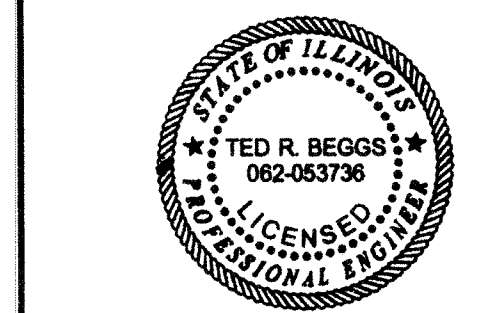
APPROVED *Donald Turner* CHAIRMAN
DATE *October 1, 2009* 2009

APPROVED *Jack Butters* SECRETARY
DATE *October 1, 2009* 2009

PREPARED BY
J.T. BLANKINSHIP, INC

CONSULTING ENGINEERS
MURPHYSBORO, ILLINOIS

APPROVED *Ted R. Beggs*
DATE *October 1, 2009* 2009



TED R. BEGGS SEAL EXPIRES
REG. NO. 062-053736 11-30-2009

PAVEMENT MARKING SCHEDULES

PAVEMENT MARKING-WATERBORNE - AR620520				
WORK ITEM	MARKING COLOR	UNIT AREA	NUMBER REQUIRED	TOTAL AREA SQ FT
RUNWAY 14-32				
CENTERLINE STRIPE (120 FT)	WHITE	360	15	5,400
CENTERLINE STRIPE (130 FT)	WHITE	390	2	780
THRESHOLD STRIPES	WHITE	862.5	16	13,800
NUMERAL 1	WHITE	320	1	320
NUMERAL 2	WHITE	652	1	652
NUMERAL 3	WHITE	633	1	633
NUMERAL 4	WHITE	602	1	602
HOLD BARS (RUNWAY END 14)	YELLOW	180	1	180
RUNWAY 2-20				
CENTERLINE STRIPE (120 FT)	WHITE	360	15	5,400
NUMERAL 0	WHITE	800	1	800
NUMERAL 2	WHITE	652	2	1,304
TAXIWAY 1				
CENTERLINE STRIPE TO TWY. STA. 5+50	YELLOW	1,084	1	1,084
HOLD BARS	YELLOW	122	1	122
TAXIWAY 3				
CENTERLINE STRIPES	YELLOW	1,567	1	1,567
HOLD BARS	YELLOW	106	3	318
RAMP				
CENTERLINE STRIPE FROM TWY. STA. 5+50	YELLOW	587	1	587
TIE DOWNS	YELLOW	40	8	320
TOTAL (YELLOW)				4,178
TOTAL (WHITE)				29,691
TOTAL (YELLOW AND WHITE)				33,869

PAVEMENT MARKING-BLACK BORDER - AR620525				
WORK ITEM	MARKING COLOR	UNIT AREA	NUMBER REQUIRED	TOTAL AREA SQ FT
RUNWAY 14-32				
CENTERLINE STRIPE (120 FT)	BLACK	124	15	1,860
CENTERLINE STRIPE (130 FT)	BLACK	134	2	268
THRESHOLD STRIPES	BLACK	156.75	16	2,508
NUMERAL 1	BLACK	68	1	68
NUMERAL 2	BLACK	106	1	106
NUMERAL 3	BLACK	106	1	106
NUMERAL 4	BLACK	106	1	106
HOLD BARS (RUNWAY END 14)	BLACK	220	1	220
RUNWAY 2-20				
CENTERLINE STRIPE (120 FT)	BLACK	124	15	1,860
NUMERAL 0	BLACK	130	1	130
NUMERAL 2	BLACK	106	2	212
TAXIWAY 1				
CENTERLINE STRIPE TO TWY. STA. 5+50	BLACK	1,088	1	1,088
HOLD BARS	BLACK	150	1	150
TAXIWAY 3				
CENTERLINE STRIPES	BLACK	1,577	1	1,577
HOLD BARS	BLACK	130	3	390
RAMP				
CENTERLINE STRIPE FROM TWY. STA. 5+50	BLACK	588	1	588
TIE DOWNS	BLACK	40	8	320
TOTAL (BLACK)				11,557

PAVEMENT MARKING-REMOVAL - AR620900				
WORK ITEM	MARKING COLOR	UNIT AREA	NUMBER REQUIRED	TOTAL AREA SQ FT
RUNWAY 14-32				
THRESHOLD STRIPES (150'X8')	WHITE	1,200	16	19,200
TOTAL (WHITE)				19,200

GENERAL NOTES

SCOPE OF WORK

THE PROPOSED PROJECT SHALL CONSIST OF THE MARKING OF RUNWAYS 14-32 AND 2-20, TAXIWAYS 1 AND 3 AND THE RAMP. ASSOCIATED WORK INCLUDES PAVEMENT MARKING REMOVAL AND INCIDENTALS.

MARKING NOTES

ALL PROPOSED MARKING ON THIS PROJECT SHALL BE APPLIED OVER THE EXISTING MARKING, EXCEPT AT LOCATIONS WHERE THE EXISTING MARKINGS ARE SHOWN TO BE REMOVED.

ALL PROPOSED RUNWAY MARKING SHALL BE SOLID AND WHITE IN COLOR.

ALL PROPOSED TAXIWAY CENTERLINE/LEAD-IN AND HOLD BAR MARKINGS SHALL BE SOLID, 1 FOOT IN WIDTH, AND YELLOW IN COLOR. TAXIWAY MARKINGS ARE INTERRUPTED FOR RUNWAY MARKINGS, UNLESS NOTED OTHERWISE.

ALL PROPOSED MARKING APPLIED ON THIS PROJECT SHALL BE OUTLINED WITH A 6" BLACK BORDER, IN ACCORDANCE WITH THE DETAILS ON THESE CONSTRUCTION PLANS.

THE RUNWAY CENTERLINE SHALL BE 3 FEET WIDE BY 120 FEET IN LENGTH AND SPACED AS SHOWN ON THE PLANS. TWO RUNWAY CENTERLINES SHALL BE 3 FEET WIDE BY 130 FEET IN LENGTH ON RUNWAY 14-32 AT THE INTERSECTION OF TAXIWAY 1.

ALL PROPOSED MARKING WILL BE PAINTED WITH TWO APPLICATIONS. ALL PROPOSED MARKING (EXCEPT FOR BLACK BORDERS) WILL BE APPLIED WITH A REFLECTIVE MEDIA ON THE SECOND APPLICATION.

CUT-OFF SHEETS WILL BE REQUIRED TO ENSURE STRAIGHT EDGES.

THE QUANTITIES PROVIDED ARE BASED ON THE ACTUAL AREAS OF MARKING TO BE APPLIED.

APPLICATION RATES WILL BE IN ACCORDANCE WITH THE SPECIAL PROVISIONS.

ALL PROPOSED WHITE AND YELLOW MARKING WILL BE PAID FOR UNDER ITEM AR620520, PAVEMENT MARKING-WATERBORNE, PER SQUARE FOOT. BLACK BORDER WILL BE PAID FOR UNDER ITEM AR620525, PAVEMENT MARKING-BLACK BORDER, PER SQUARE FOOT.

ENGINEER'S FIELD OFFICE

AN ENGINEER'S FIELD OFFICE WILL NOT BE REQUIRED FOR THIS PROJECT

INDEX OF SHEETS

SHEET NO.	DESCRIPTION
1	TITLE, COVER & SIGNATURE SHEET
2	INDEX OF SHEETS, SUMMARY OF QUANTITIES, GENERAL NOTES & PAVEMENT MARKING SCHEDULES
3	SAFETY PLAN
4	PAVEMENT MARKING PLAN - RUNWAY 14-32 & TAXIWAY 1
5	PAVEMENT MARKING PLAN - RUNWAY 2-20
6	PAVEMENT MARKING PLAN - TAXIWAY 1 & APRON

SUMMARY OF QUANTITIES

ITEM NO.	DESCRIPTION	UNIT	TOTAL QUANTITIES	AS BUILT QUANTITIES
AR620520	PAVEMENT MARKING - WATERBORNE	SQ FT	33,869	
AR620525	PAVEMENT MARKING - BLACK BORDER	SQ FT	11,557	
AR620900	PAVEMENT MARKING - REMOVAL	SQ FT	19,200	

CONTRACT NO. - CI002

CAIRO REGIONAL AIRPORT ALEXANDER COUNTY, ILLINOIS		
AIP PROJECT NO. 3-17-0007-B11		ILL PROJECT NO CIR-3944
INDEX OF SHEETS - SUMMARY OF QUANTITIES GENERAL NOTES - PAVEMENT MARKING SCHEDULES		
SCALE AS SHOWN	J. T. BLANKINSHIP, INC. CONSULTING ENGINEERS & LAND SURVEYORS ILLINOIS PROFESSIONAL DESIGN FIRM NO. 1394 P. O. BOX 40 401 S. 17TH STREET MURPHYSBORO, ILLINOIS 62966 PHONE 618-687-1771	FILE NO. 9327
DATE OCTOBER 1, 2009		DESIGN FILE E9327-02.DWG
DRAWN BY RSG		SHEET NO. 2 OF 6

PROPOSED SAFETY PLAN

ALL PROVISIONS OF THE LATEST EDITION OF FAA ADVISORY CIRCULAR 150/5370-2, "OPERATIONAL SAFETY ON AIRPORTS DURING CONSTRUCTION" APPLY TO THIS CONTRACT, EXCEPT AS MODIFIED BY THIS SAFTY PLAN, OR AS MODIFIED BY THE CAIRO REGIONAL AIRPORT AT THE PRECONSTRUCTION CONFERENCE OR DURING THE COURSE OF THE CONTRACT.

GENERAL - THE CAIRO REGIONAL AIRPORT IS COMPRISED OF 2 PAVED RUNWAYS AND THE ASSOCIATED TAXIWAY SYSTEM.

THE PROPOSED PROJECT WILL REQUIRE THE ENTIRE AIRPORT TO BE CLOSED FOR THE DURATION OF THE WORK.

THE CONTRACTOR WILL BE REQUIRED TO SUBMIT TO THE RESIDENT ENGINEER, FOR APPROVAL BY THE AIRPORT MANAGER, A SCHEDULE OF CONSTRUCTION ACTIVITIES PRIOR TO THE START OF CONSTRUCTION. CLOSURE BEGINNING AND ENDING TIMES WILL BE DETERMINED BY THE AIRPORT MANAGER. THE CONTRACTOR IS REQUIRED TO ALLOW SUFFICIENT TIME PRIOR TO THE ENDING OF THE CLOSURE TIME FOR CURING OF PLACED MATERIALS AND CLEAN UP OF THE WORK AREA.

THE CONTRACTOR IS REQUIRED TO NOTIFY THE AIRPORT MANAGER THROUGH THE RESIDENT ENGINEER, A MINIMUM OF 7 DAYS PRIOR TO THE START OF CONSTRUCTION. THIS WILL ALLOW THE AIRPORT MANAGER TO ISSUE ALL NECESSARY NOTAMS REGARDING THE CONSTRUCTION ACTIVITIES OCCURRING AROUND THE AIRFIELD.

THE AIRPORT MANAGER, OR HIS DESIGNATED REPRESENTATIVE, WILL ISSUE ALL NOTICES TO AIRMAN (NOTAM) RELATED TO OPENING AND CLOSING PAVEMENTS THROUGHOUT THE PROJECT.

HAUL ROUTE AND PARKING AREA

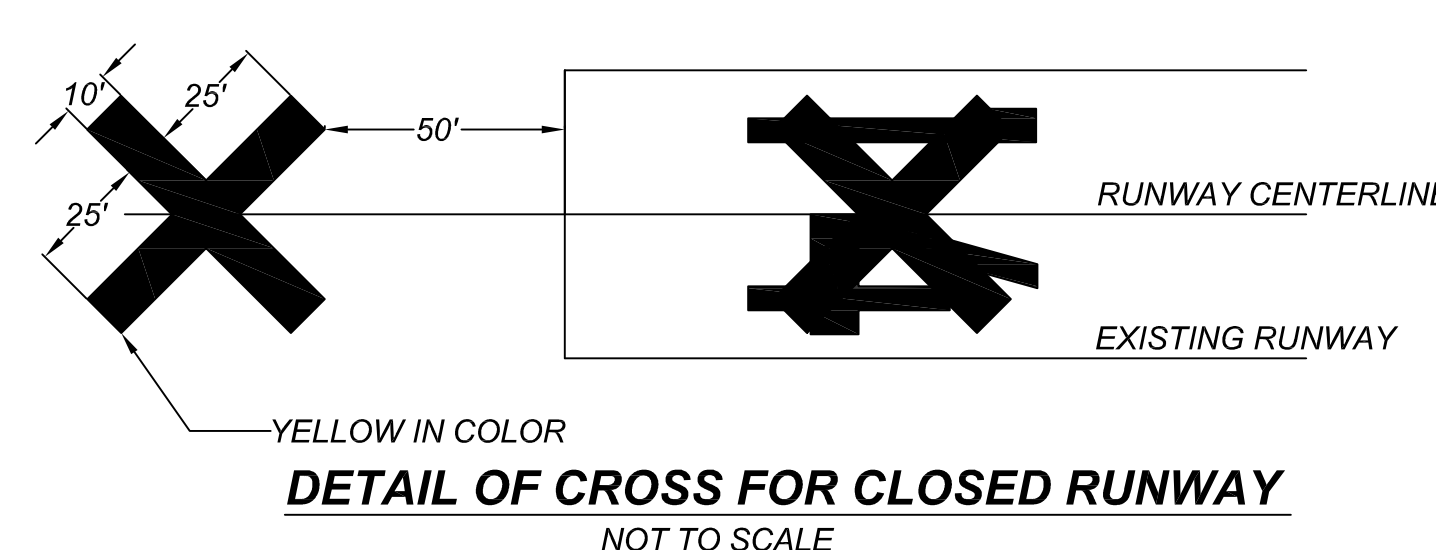
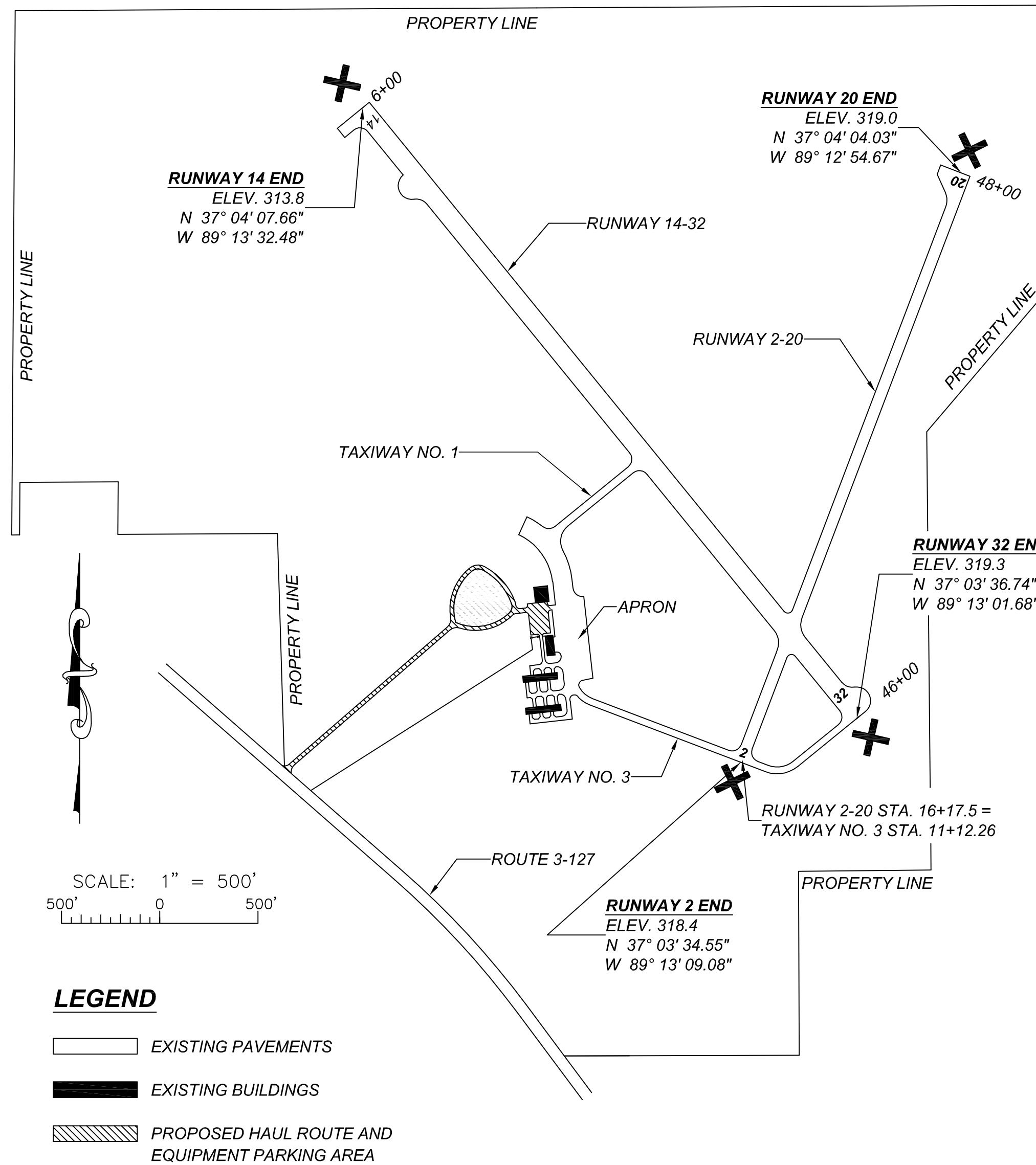
THE CONTRACTOR WILL USE THE DESIGNATED HAUL ROUTE AND PARKING AREA AS SHOWN ON THIS SHEET AND IN ACCORDANCE WITH THE SPECIAL PROVISIONS. THE PROPOSED PARKING AREA WILL BE LOCATED IN THE EXISTING AUTO PARKING LOT. THE HAUL ROUTE WILL BE LOCATED ON THE EXISTING ENTRANCE ROAD AS SHOWN. THE CONTRACTOR WILL BE REQUIRED TO MAINTAIN THE PROPOSED HAUL ROUTE AND PARKING AREA THROUGHOUT THE COURSE OF THE PROJECT. ANY AREAS DAMAGED OUTSIDE OF THESE AREAS WILL BE REPAIRED BY THE CONTRACTOR AND AT THE CONTRACTOR'S OWN EXPENSE. AT THE CONCLUSION OF THE PROJECT THE CONTRACTOR WILL RESTORE THESE AREAS TO THEIR ORIGINAL STATE. CONSTRUCTION, MAINTENANCE, AND ANY REQUIRED RESTORATION OF THE HAUL ROUTE AND PARKING AREA, INCLUDING LABOR, MATERIALS, EQUIPMENT, AND OTHER INCIDENTAL ITEMS WILL BE CONSIDERED INCIDENTAL TO THE PROJECT AND NO ADDITIONAL COMPENSATION WILL BE ALLOWED.

HEIGHT OF CONSTRUCTION EQUIPMENT

THE MAXIMUM HEIGHT OF THE CONSTRUCTION EQUIPMENT WILL BE 25 FEET.

EROSION CONTROL

THIS PROJECT WILL DISTURB LESS THAN 1 ACRE OF LAND, THEREFORE NEITHER A STORMWATER POLLUTION PREVENTION PLAN (SWPPP) NOR A N.P.D.E.S. PERMIT WILL BE REQUIRED.



DETAIL OF CROSS FOR CLOSED RUNWAY
NOT TO SCALE

CONTRACTOR RESPONSIBILITIES

IDENTIFICATON - WHEN THE CONTRACTORS VEHICLES AND EQUIPMENT ARE ON THE AIRPORT THEY SHALL BE PROPERLY MARKED WITH THREE (3) FOOT SQUARE CHECKERED FLAGS (INTERNATIONAL ORANGE AND WHITE). THE CONTRACTOR WILL ALSO PROVIDE WORKERS WITH SOME TYPE OF TAG OR GARMENT TO IDENTIFY THE PERSON AS BEING PART OF THE CONSTRUCTION CREW

RADIO CONTROL - THE CONTRACTOR WILL BE REQUIRED TO BE IN TWO-WAY RADIO CONTACT (122.80 MHz.) WITH THE AIRPORT UNICOM. THIS WILL KEEP THE CONTRACTOR IN CONSTANT CONTACT WITH THE CAIRO REGIONAL AIRPORT AND ENABLE THE AIRPORT TO IMMEDIATELY CONTACT THE CONTRACTOR IN CASE OF AN AERONAUTICAL EMERGENCY THAT WOULD REQUIRE ACTION BY THE CONTRACTOR AND/OR HIS PERSONNEL.

THE CONTRACTOR'S EQUIPMENT PARKING AND STORAGE AREA WILL BE AS SHOWN ON THIS SHEET. THE CONTRACTOR'S EMPLOYEES WILL PARK THEIR VEHICLES IN THIS AREA. ONLY CONTRACTOR VEHICLES WILL BE ALLOWED OUTSIDE THIS AREA.

THE CONTRACTOR AND HIS EMPLOYEES WILL BE RESTRICTED TO THE WORK AREA AND ALL OTHER AREAS OF THE AIRPORT ARE "OFF LIMITS" TO THEM.

ALL WORK PERFORMED SHALL BE DONE IN AN ORDERLY AND EFFECTIVE MANNER

THE CONTRACTOR IS RESPONSIBLE FOR PLACING, MAINTAINING, RELOCATING, AND REMOVING CROSSES AND OTHER MEANS OF TRAFFIC MAINTENANCE NECESSARY TO SUCCESSFULLY AND SAFELY CLOSE THE CONSTRUCTION WORK LIMITS.

THE CROSSES, THEIR MAINTENANCE, PLACEMENT AND REMOVAL WILL BE CONSIDERED AS AN INCIDENTAL ITEM TO THE CONTRACT AND NO ADDITIONAL COMPENSATION WILL BE ALLOWED.

AIRPORT SECURITY NOTE

THE AIRPORT SPONSOR MAY PROVIDE ADDITIONAL GUIDANCE AND TRAINING FOR AIRPORT SECURITY MEASURES. AIRPORT SECURITY WILL BE MAINTAINED AT ALL TIMES. THE CONTRACTOR WILL CLOSE AND LOCK THE EXISTING GATE IN THE HAUL ROUTE AT THE END OF EACH WORKING DAY. ANY ACCESS GATES WILL BE CLOSED AT ALL TIMES WHEN NOT IN USE. IF CONTINUOUS HAULING IS REQUIRED, THEN THE GATE ACCESS WILL BE MONITORED TO PREVENT A BREACH FROM OUTSIDE, NON-CONSTRUCTION RELATED TRAFFIC.

TEMPORARY RUNWAY CLOSURE NOTE

FAA CRITERIA REQUIRES A RUNWAY BE CLOSED IF CONSTRUCTION ACTIVITIES OR PERSONNEL ARE WITHIN 200 FT OF A RUNWAY CENTERLINE.

COST OF CONSTRUCTING, PLACING, MAINTAINING AND REMOVING CROSSES WILL BE CONSIDERED INCIDENTAL TO THE CONTRACT AND NO ADDITIONAL COMPENSATION WILL BE ALLOWED. ALL RUNWAY CLOSURES WILL BE IN ACCORDANCE WITH ALL FAA ADVISORY CIRCULARS THAT RELATE TO RUNWAY CLOSURES DURING CONSTRUCTION OPERATIONS. THE RUNWAY CLOSURE PROCEDURES SHALL BE REVIEWED BY THE AIRPORT MANAGER AND COORDINATED WITH THE RESIDENT ENGINEER. THE CROSSES WILL BE YELLOW IN COLOR AND SHALL BE MADE OF A SUITABLE MATERIAL, AS APPROVED BY THE RESIDENT ENGINEER AND REVIEWED BY THE AIRPORT MANAGER. THE CROSSES WILL BE PLACED OVER THE NUMERALS OR OFF EACH END OF THE RUNWAY AND SECURED IN A MANNER APPROVED BY THE AIRPORT MANAGER. THE PROPOSED CROSSES WILL BE PLACED WHEN THE RUNWAYS ARE CLOSED AND REMOVED WHEN THE RUNWAYS ARE RE-OPENED. THE CONTRACTOR WILL BE RESPONSIBLE FOR THE PLACEMENT AND REMOVAL OF THE CROSSES. NO ADDITIONAL COMPENSATION WILL BE ALLOWED.

RUNWAY CLOSURE

- * CONTACT THE AIRPORT MANAGER OR HIS ASSIGNED REPRESENTATIVE.
- * ISSUANCE OF NOTAM BY THE AIRPORT MANGAGER OR HIS ASSIGNED REPRESENTATIVE.
- * PLACEMENT OF CROSSES (SEE DETAIL THIS SHEET)
- ONLY AT THE TIME THAT ALL OF THE ABOVE ARE COMPLETED MAY ANY CONSTRUCTION OPERATIONS BEGIN**

RUNWAY RE-OPENING PROCEDURES:

- * REMOVE CROSSES.
- * NOTIFY THE AIRPORT MANAGER OR HIS REPRESENTATIVE TO CANCEL THE NOTAM.
- * CANCELLATION OF THE NOTAM.

CONTRACT NO. - CI002

CAIRO REGIONAL AIRPORT
ALEXANDER COUNTY, ILLINOIS

AIP PROJECT NO. 3-17-0007-B11

ILL PROJECT NO CIR-3944

SAFETY PLAN

SCALE AS SHOWN	J. T. BLANKINSHIP, INC. CONSULTING ENGINEERS & LAND SURVEYORS ILLINOIS PROFESSIONAL DESIGN FIRM NO. 1394 P. O. BOX 40 401 S. 17TH STREET MURPHYSBORO, ILLINOIS 62966 PHONE 618-687-1771	FILE NO. 9327
DATE OCTOBER 1, 2009		DESIGN FILE E9327-03.DWG
DRAWN BY RSG		SHEET NO. 3 OF 6

AREA - 320 SQ FT
BLACK BORDER - 68 SQ FT

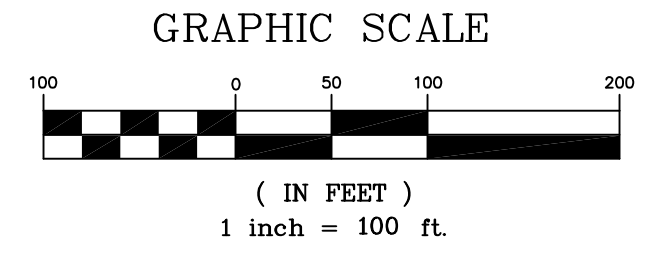
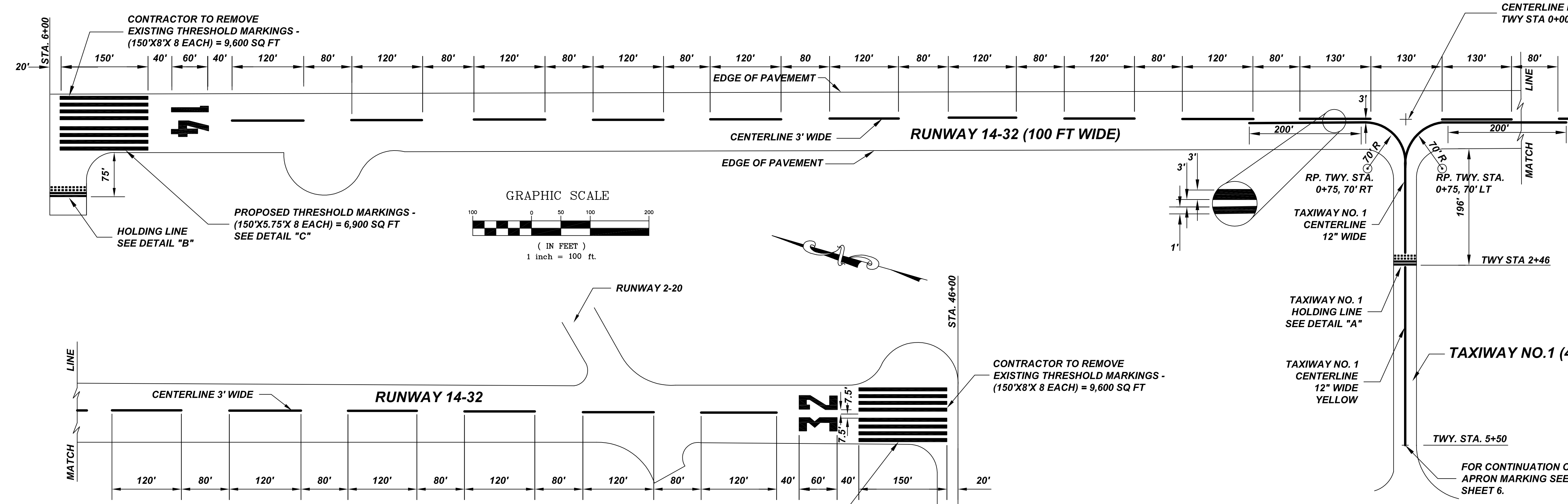
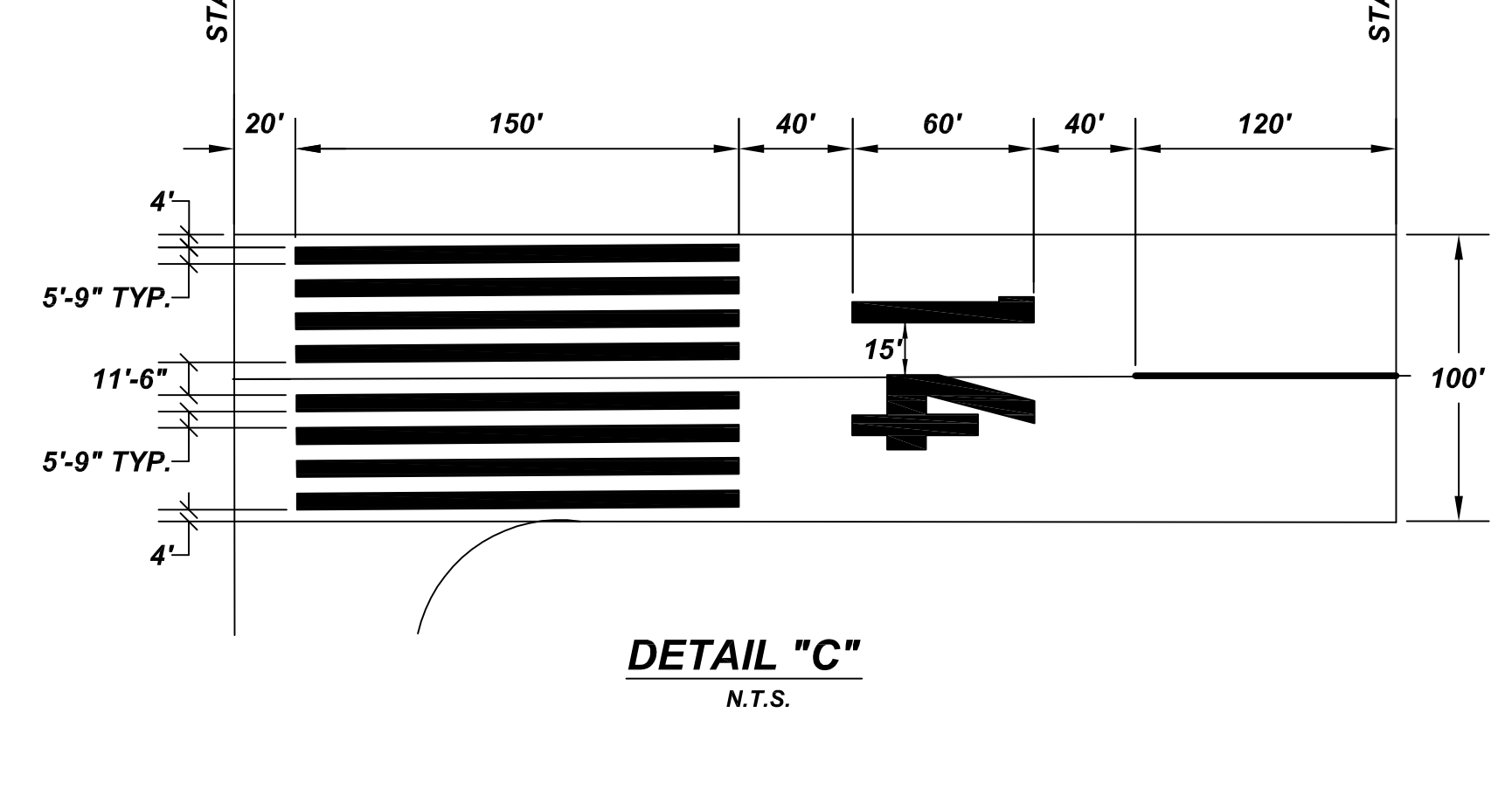
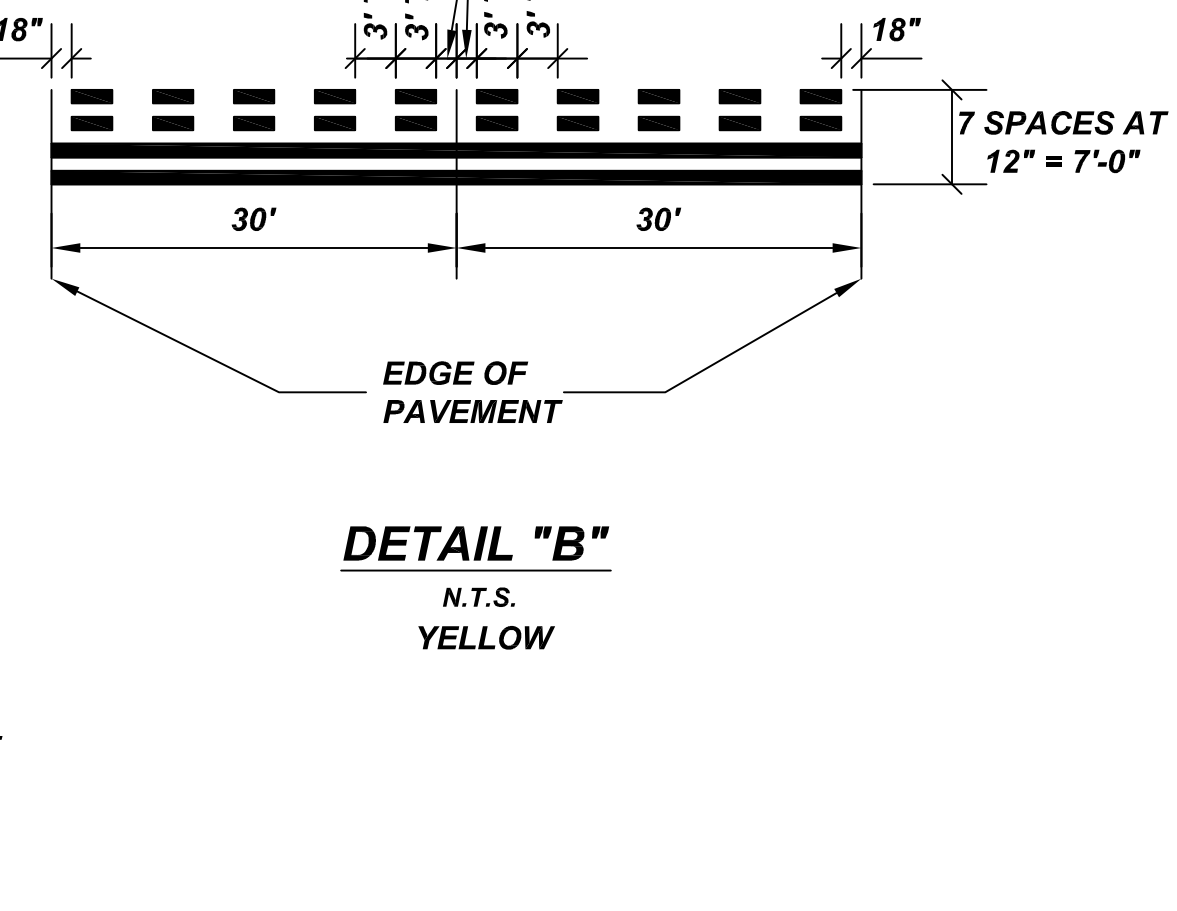
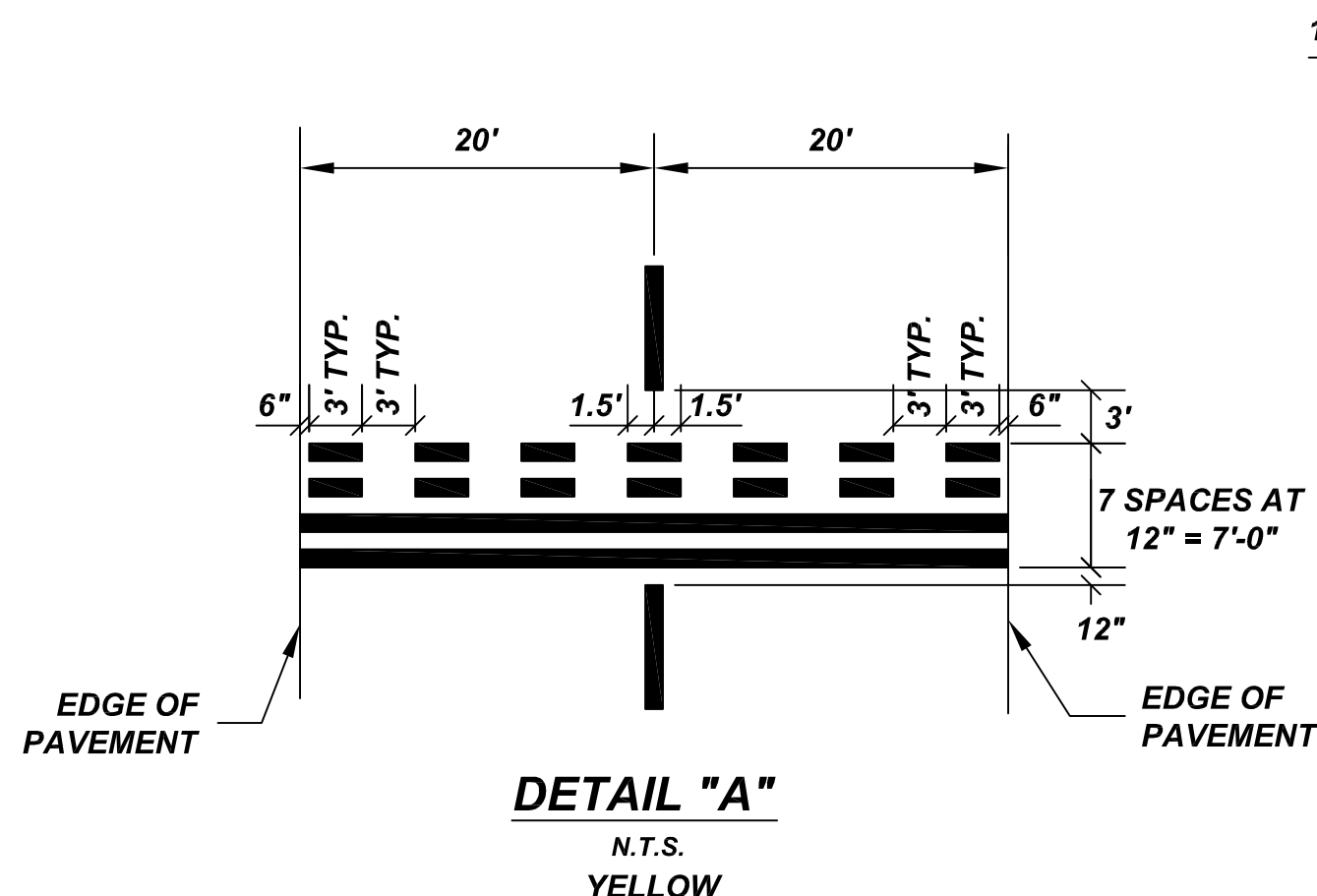
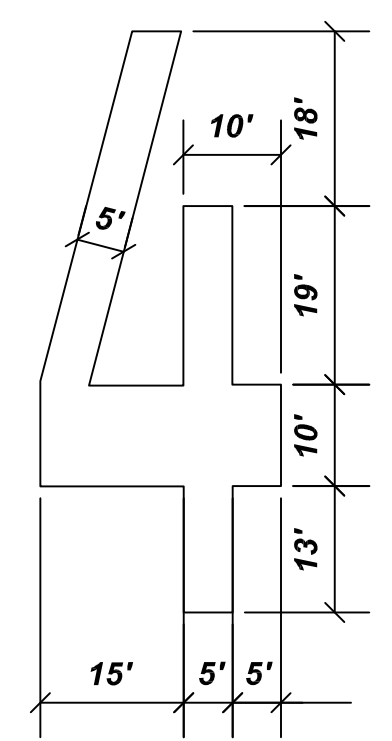
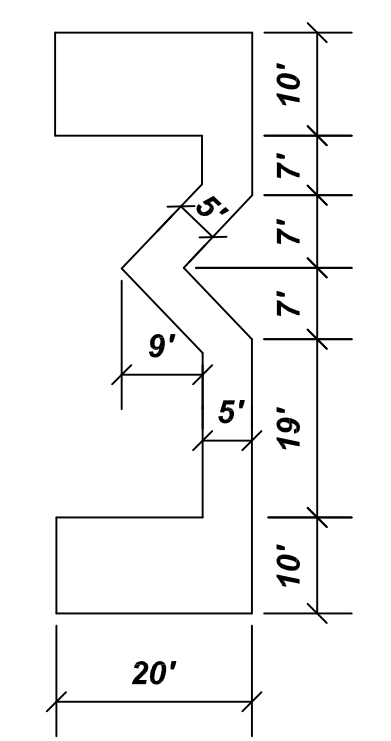
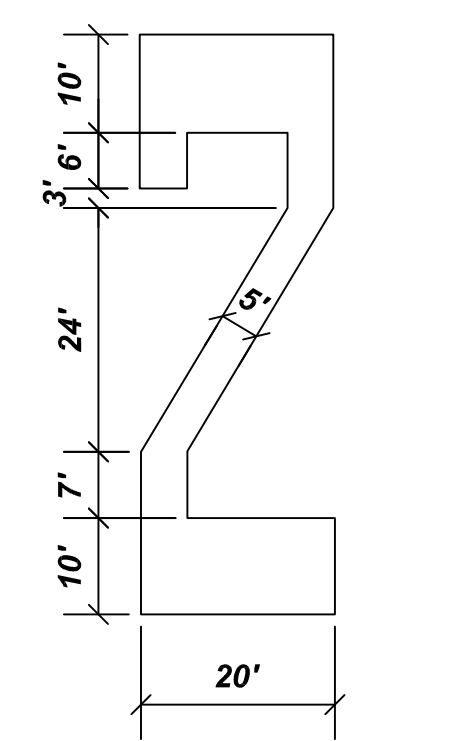
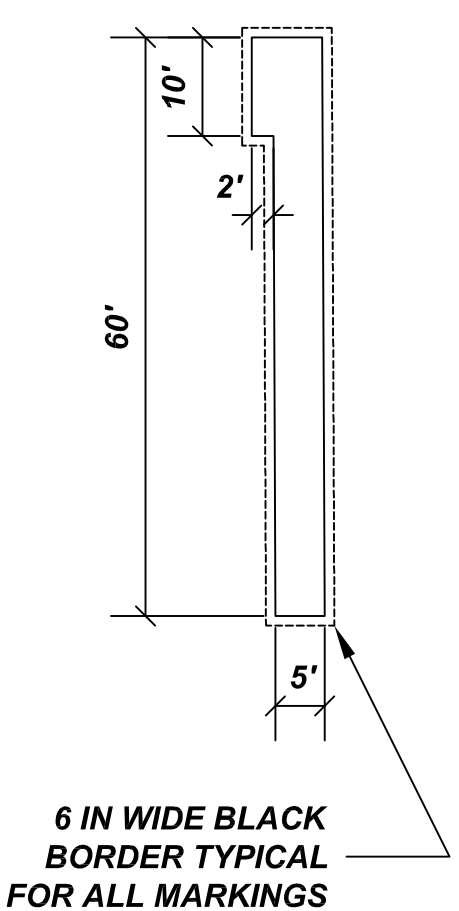
AREA - 633 SQ FT
BLACK BORDER - 106 SQ FT

AREA - 602 SQ FT
BLACK BORDER - 106 SQ FT

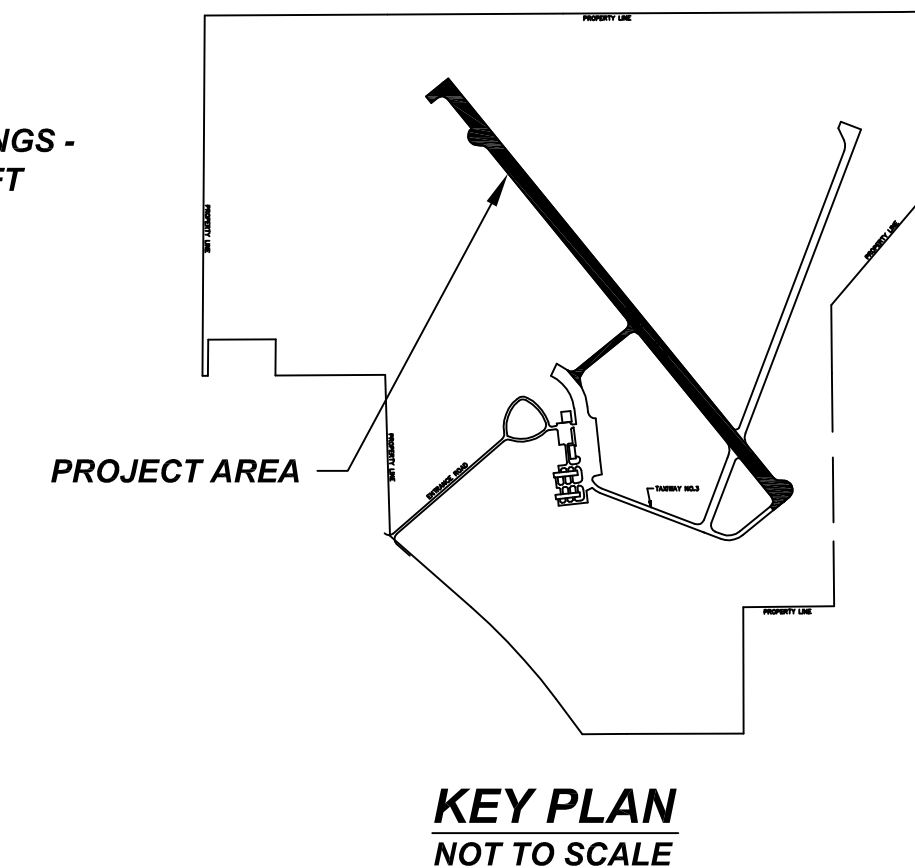
AREA - 122 SQ FT
BLACK BORDER - 150 SQ FT

AREA - 180 SQ FT
BLACK BORDER - 220 SQ FT

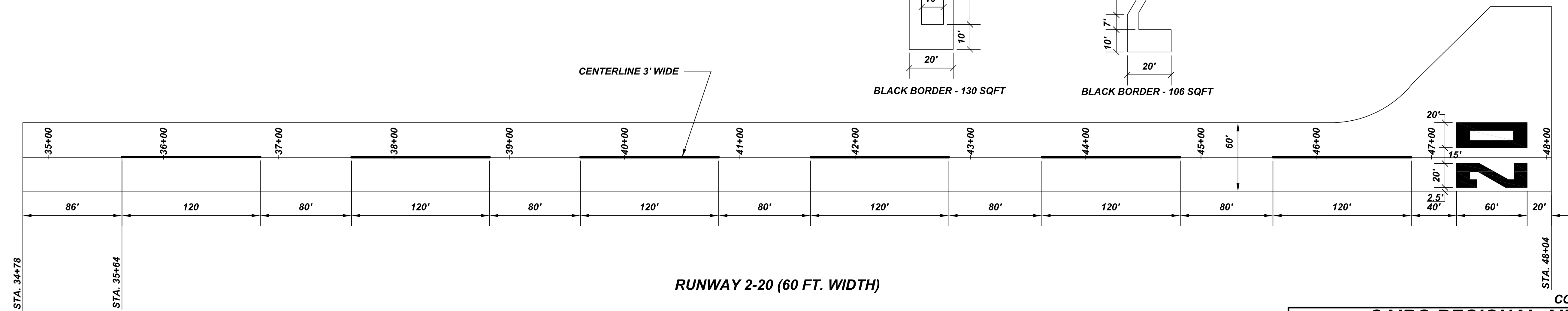
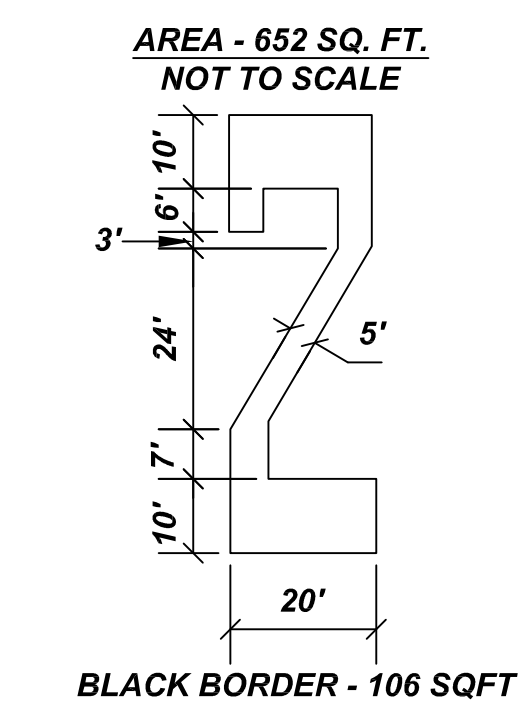
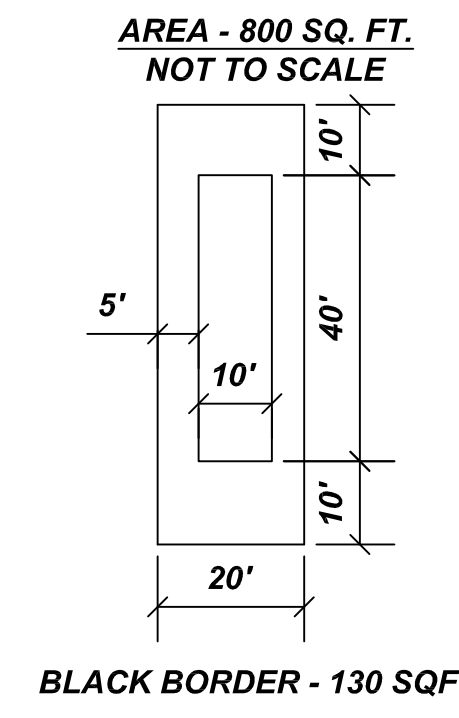
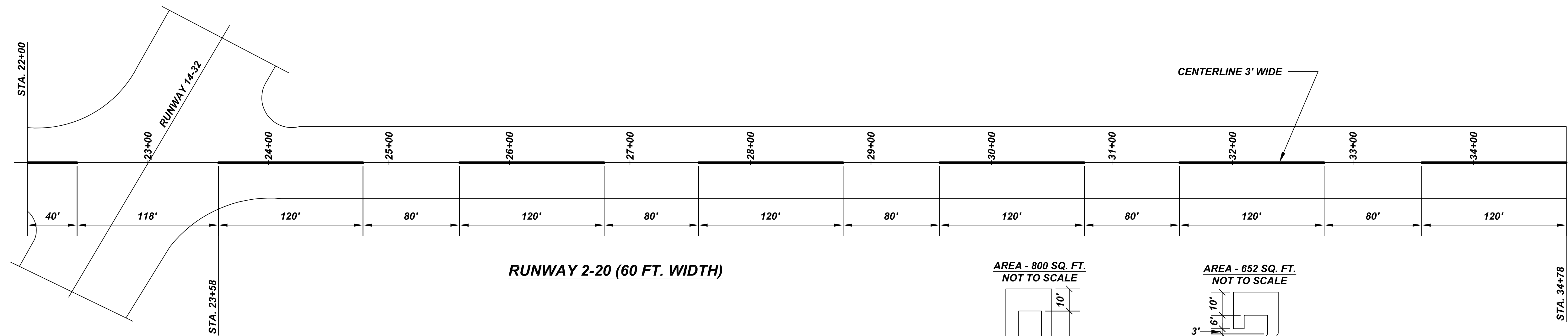
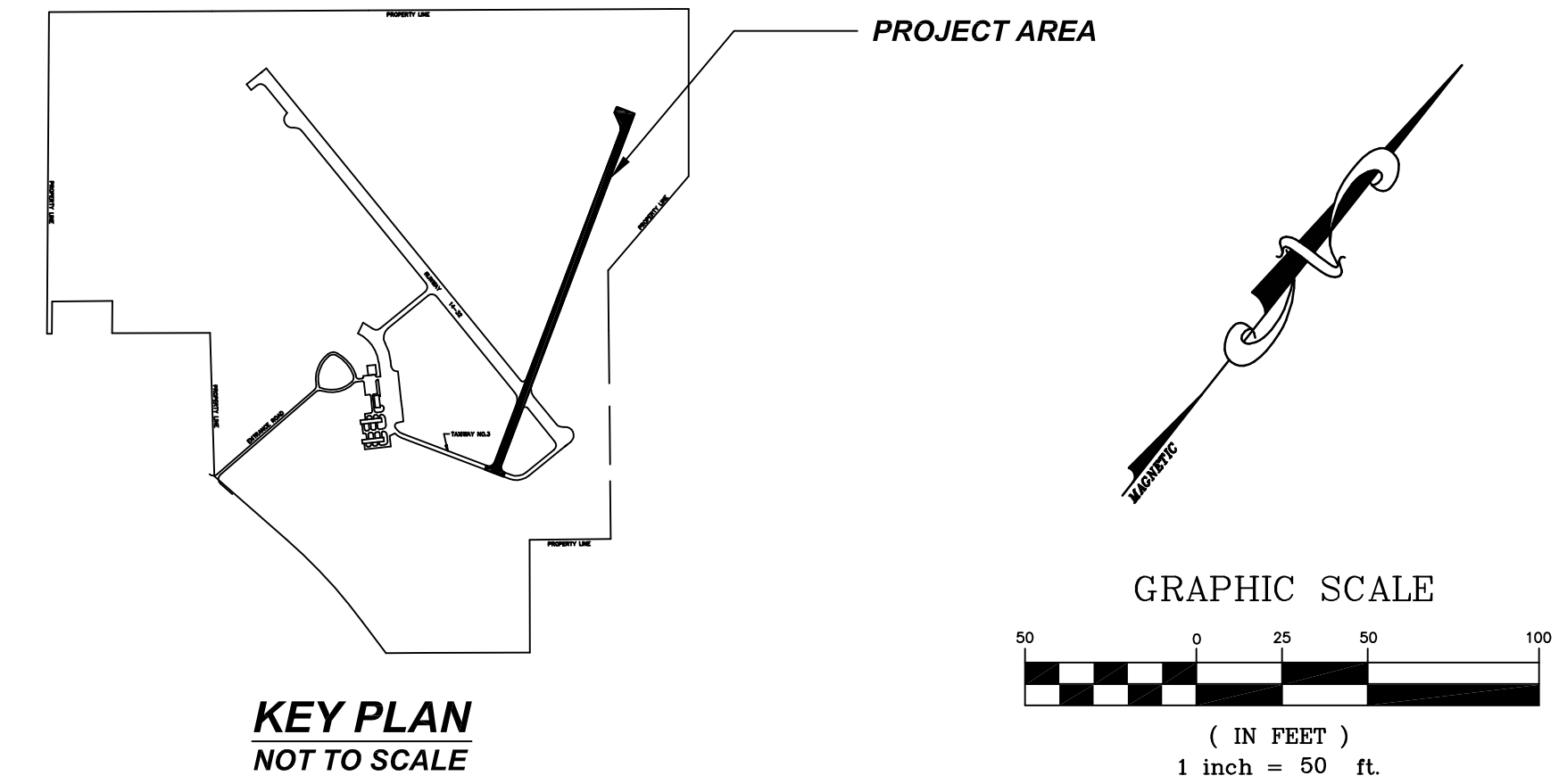
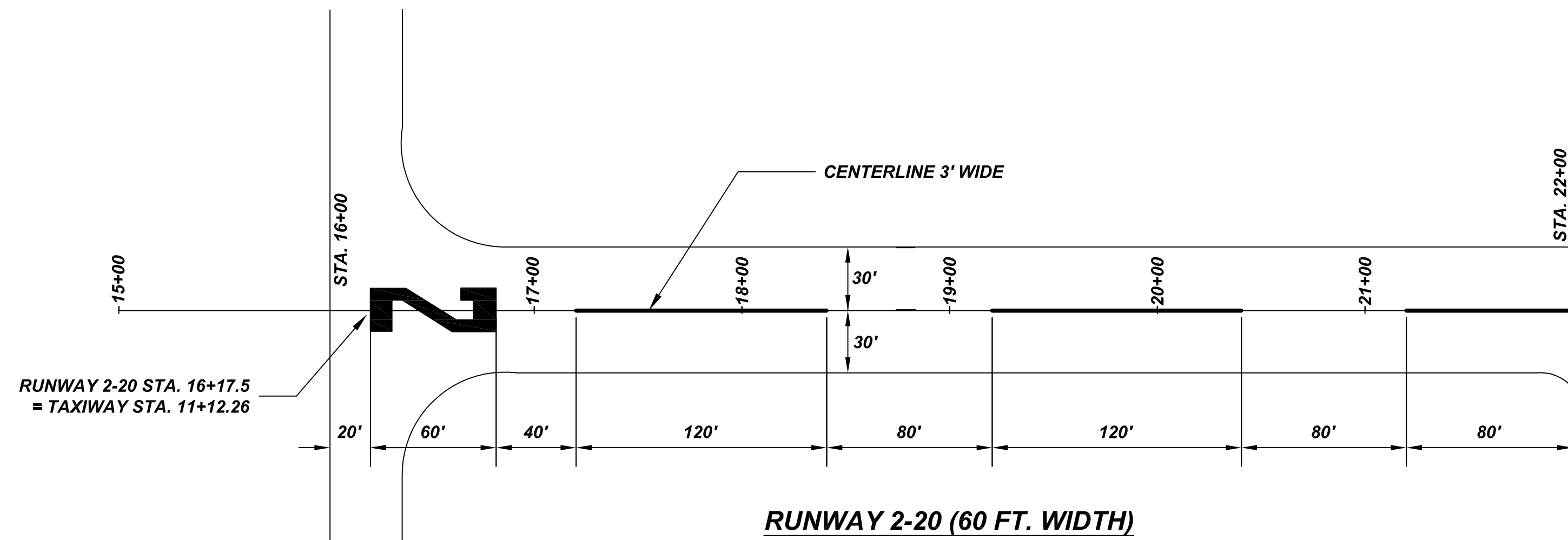
THRESHOLD STRIPES
AREA - 6,900 SQ FT
BLACK BORDER - 1,254 SQ FT



NOTE TO CONTRACTOR
-ALL RUNWAY MARKING TO BE WHITE WATERBORNE
-ALL TAXIWAY MARKING TO BE YELLOW WATERBORNE
SEE SPECIFICATIONS

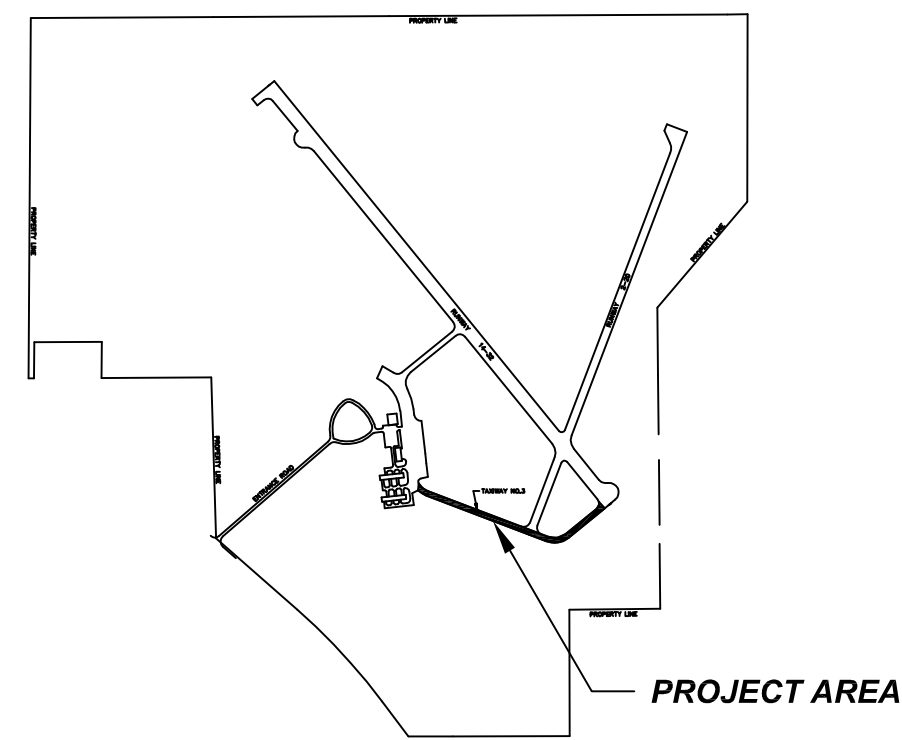
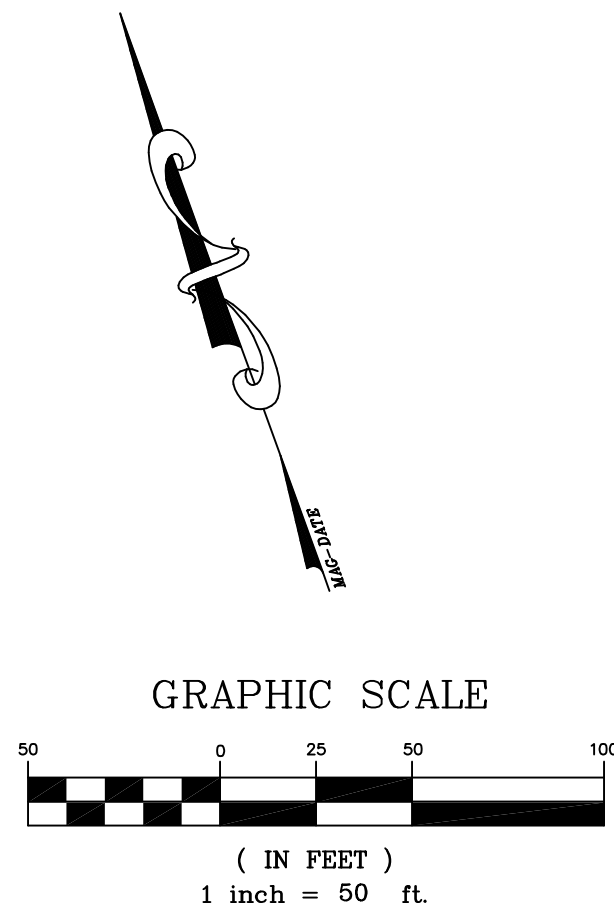


CONTRACT NO. - CI002		
CAIRO REGIONAL AIRPORT ALEXANDER COUNTY, ILLINOIS		
AIP PROJECT NO. 3-17-0007-B11		ILL PROJECT NO CIR-3944
PAVEMENT MARKING PLAN - RUNWAY 14-32 & TAXIWAY 1		
SCALE AS SHOWN	J. T. BLANKINSHIP, INC. CONSULTING ENGINEERS & LAND SURVEYORS ILLINOIS PROFESSIONAL DESIGN FIRM NO. 1394 P. O. BOX 40 401 S. 17TH STREET MURPHYSBORO, ILLINOIS 62966 PHONE 618-687-1771	FILE NO. 9327
DATE OCTOBER 1, 2009		DESIGN FILE E9327-04.DWG
DRAWN BY RSG		SHEET NO. 4 OF 6

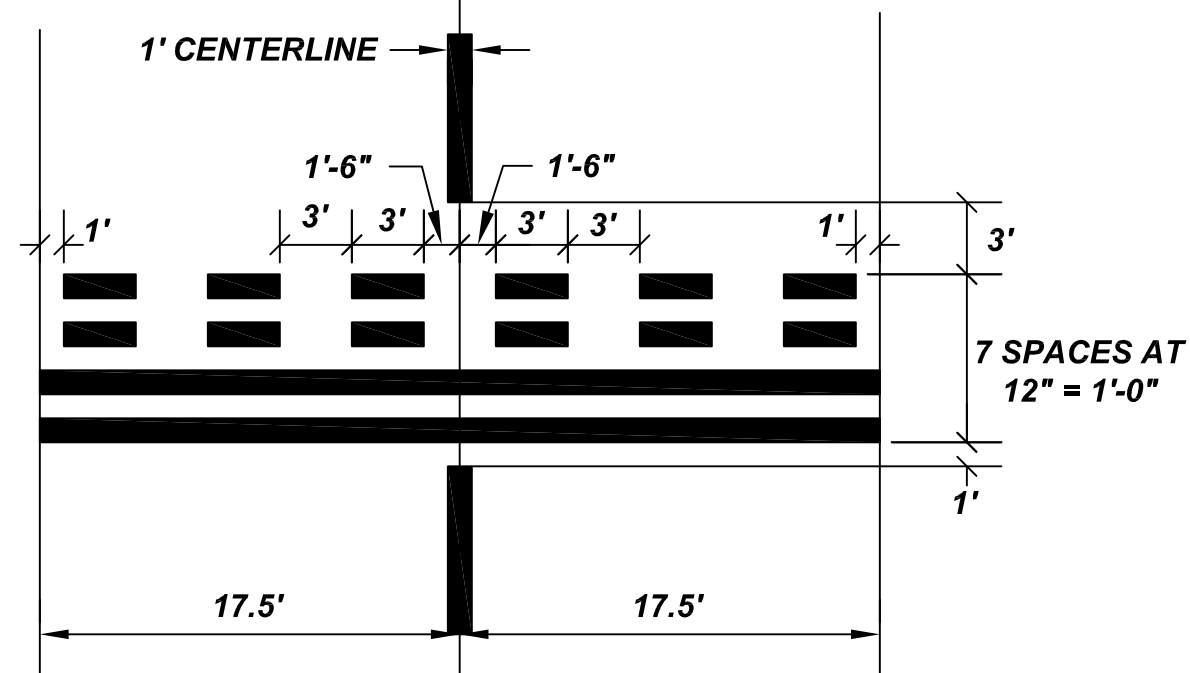


CONTRACT NO. - CI002

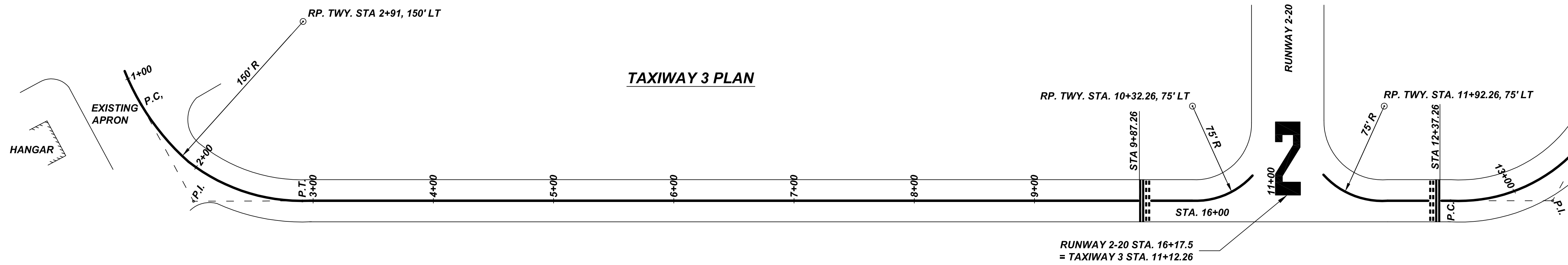
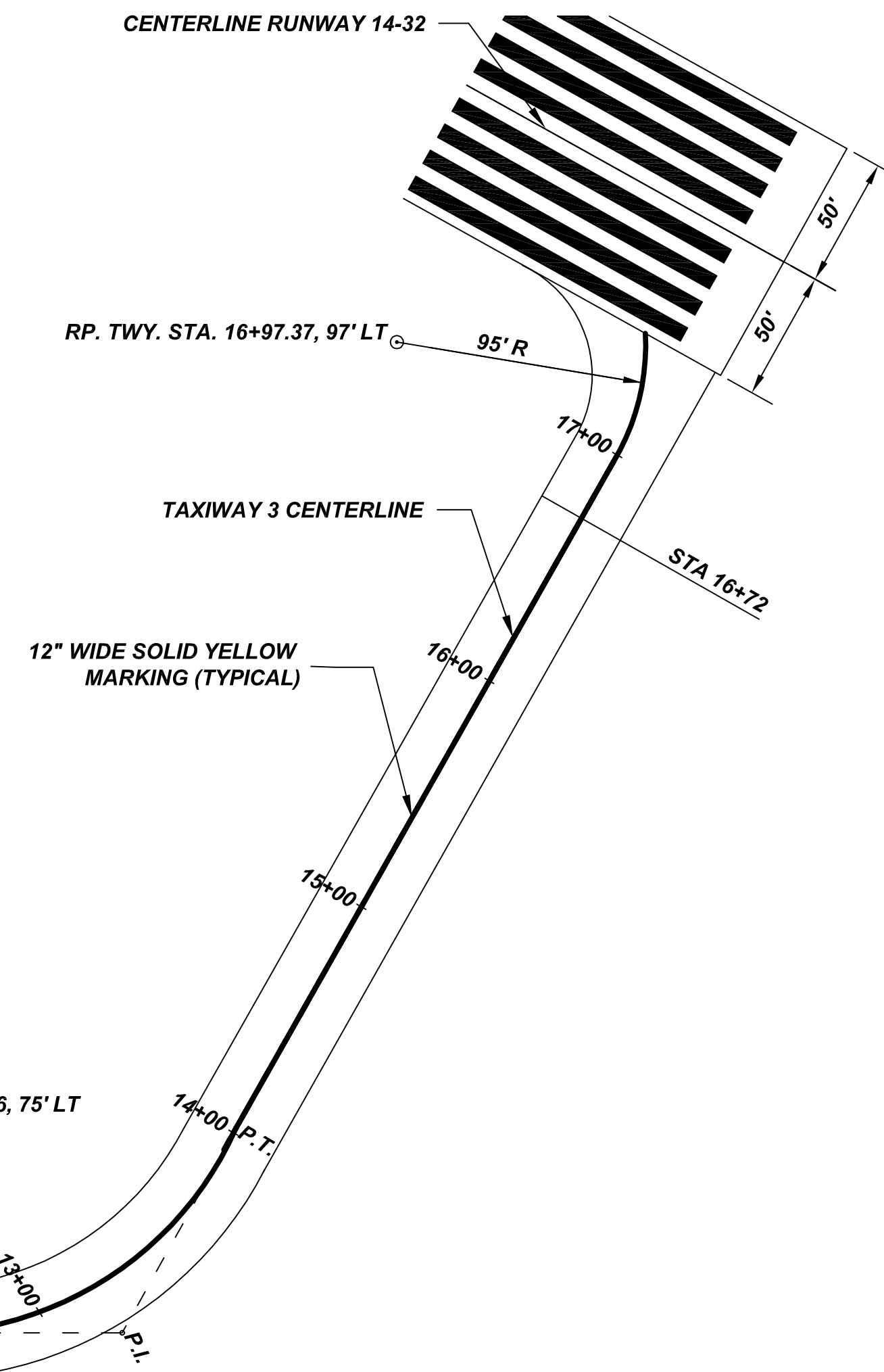
CAIRO REGIONAL AIRPORT		
ALEXANDER COUNTY, ILLINOIS		
AIP PROJECT NO. 3-17-0007-B11		ILL PROJECT NO CIR-3944
PAVEMENT MARKING PLAN - RUNWAY 2-20		
SCALE 1" = 50'	J. T. BLANKINSHIP, INC. CONSULTING ENGINEERS & LAND SURVEYORS ILLINOIS PROFESSIONAL DESIGN FIRM NO. 1394	FILE NO. 9327
DATE OCTOBER 1, 2009		DESIGN FILE E9327-05.DWG
DRAWN BY RSG	P. O. BOX 40 401 S. 17TH STREET MURPHYSBORO, ILLINOIS 62966 PHONE 618-687-1771	SHEET NO. 5 OF 6



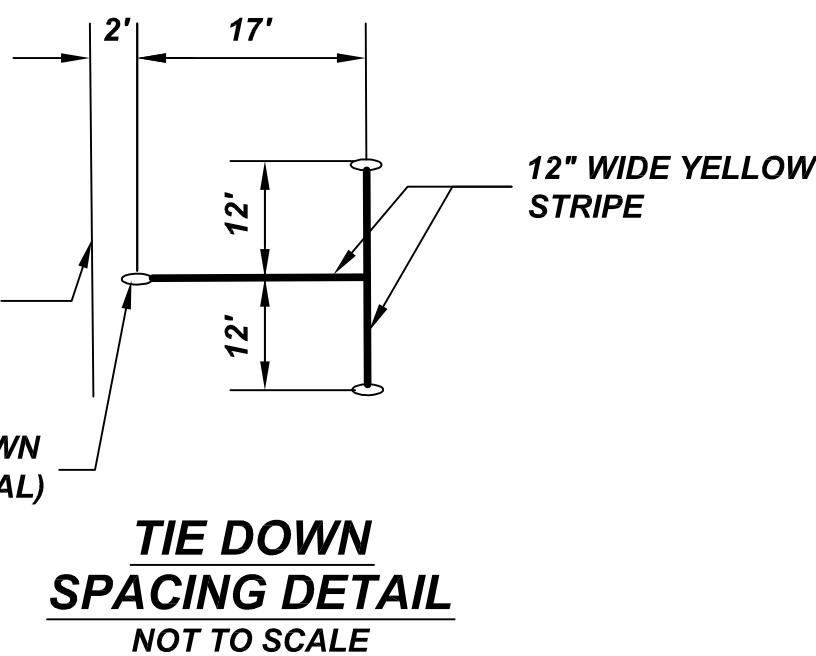
KEY PLAN
NOT TO SCALE



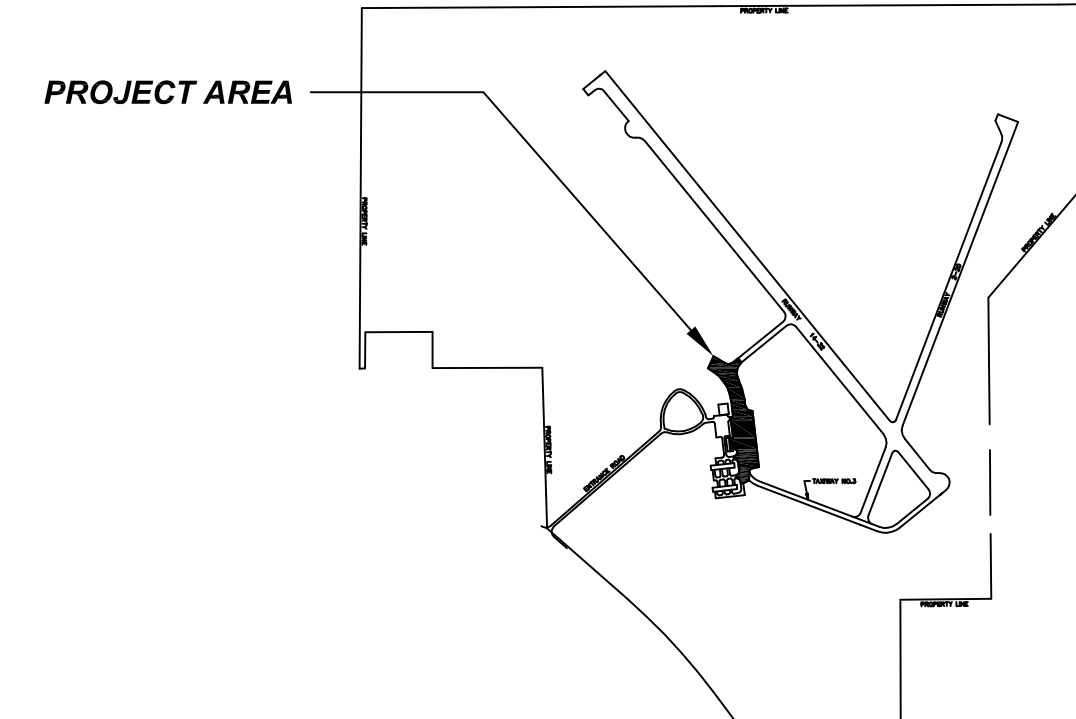
TAXIWAY HOLDING LINE DETAIL
NOT TO SCALE
AREA - 106 SQ FT
BLACK BORDER - 130 SQ FT



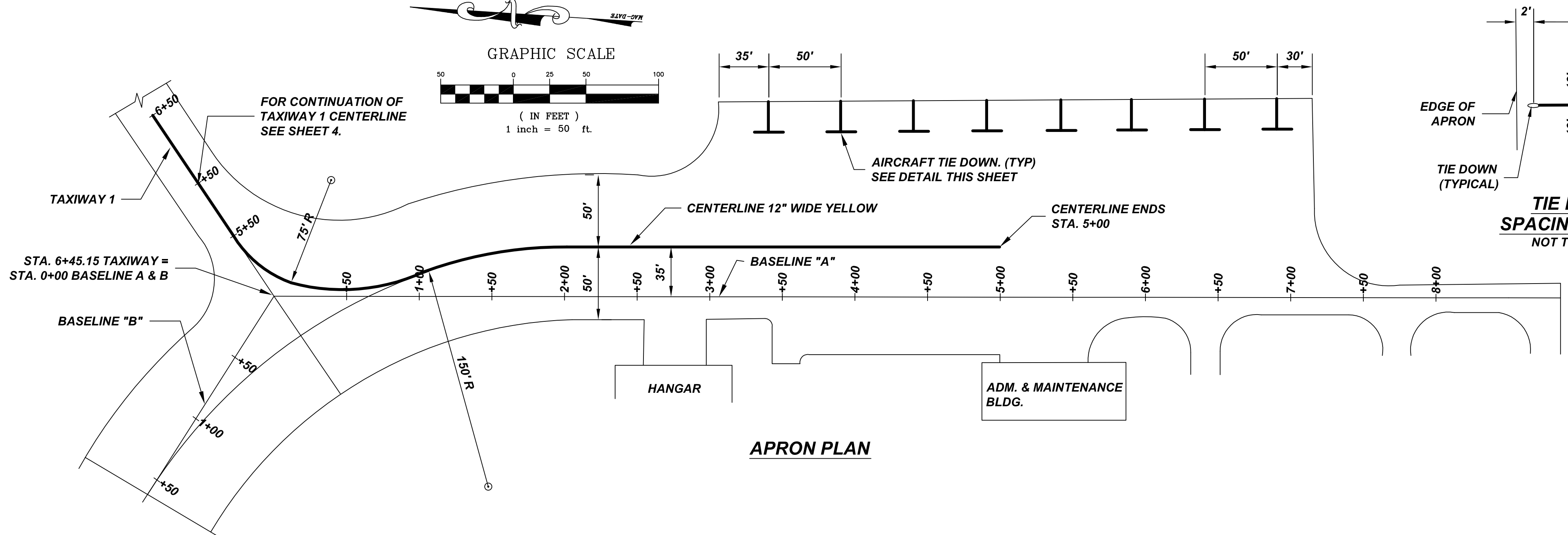
TAXIWAY 3 PLAN



TIE DOWN SPACING DETAIL
NOT TO SCALE



KEY PLAN
NOT TO SCALE



APRON PLAN

CONTRACT NO. - C1002		
CAIRO REGIONAL AIRPORT ALEXANDER COUNTY, ILLINOIS		
AIP PROJECT NO. 3-17-0007-B11		ILL PROJECT NO CIR-3944
PAVEMENT MARKING PLAN - TAXIWAY 3 & APRON		
SCALE AS SHOWN	J. T. BLANKINSHIP, INC. CONSULTING ENGINEERS & LAND SURVEYORS ILLINOIS PROFESSIONAL DESIGN FIRM NO. 1394 P.O. BOX 40 401 S. 17TH STREET MURPHYSBORO, ILLINOIS 62966 PHONE 618-687-1771	FILE NO. 9327
DATE OCTOBER 1, 2009		DESIGN FILE E9327-06.DWG
DRAWN BY RSG		SHEET NO. 6 OF 6