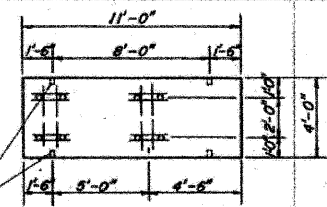
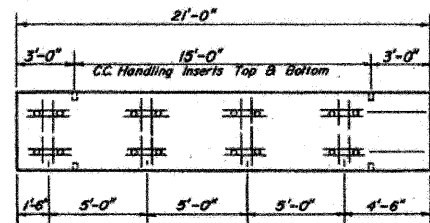


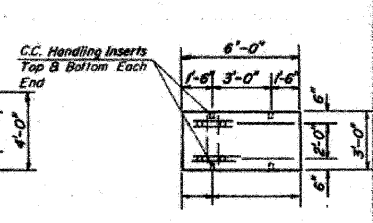
4-W-16
4 - Required



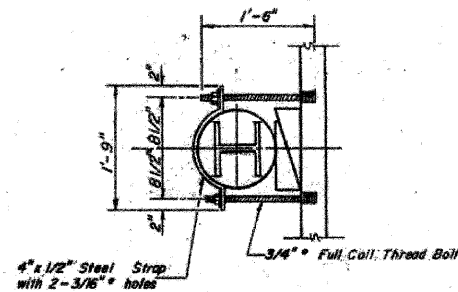
4-W-11
4 - Required



4-W-21
4 - Required



3-W-6
4 - Required

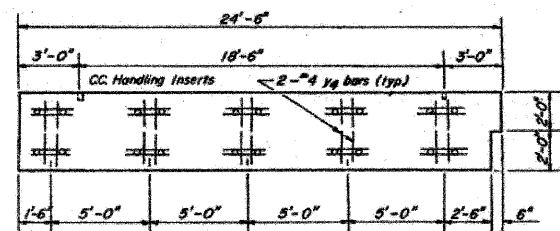


HANGING DETAIL

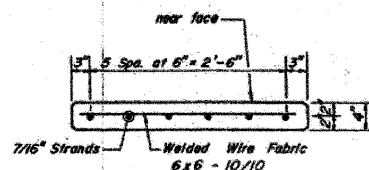
**BILL OF MATERIAL
CONCRETE PLANK - 2 ABUTMENTS ***

Bar	Number	Size	Length	Shape
Y ₃	44	"4	2'-10"	—
Y ₄	220	"4	3'-10"	—
Z	88	"3	4'-8"	—
Concrete			Cu. Yd.	29.6
Reinforcement Bars			Lbs.	800
7/16" Strands			Lbs.	1898
Welded Wire Fabric			Lbs.	494
3/4" Coll Hanger Frames			Each	248
3/4" Coll Loops (Handling Inserts)			Each	88
3/4" Full Coil Thread Bolt			Each	496
3/4" Coll Washers			Each	496
1/2" x 4" Steel Straps			Each	248

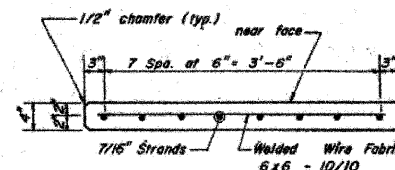
* This information for fabrication of Plank only. Payment for all items to be in the contract unit price per sq. ft. of Precast Prestressed Concrete Plank.



4-C-24.5
2 - Required (Right Hand)
2 - Required (Left Hand)



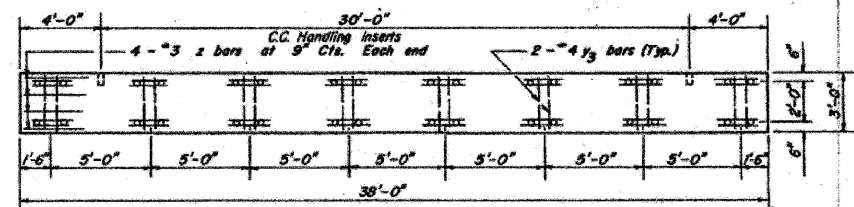
SECTION 3' PLANK
Shown in casting position



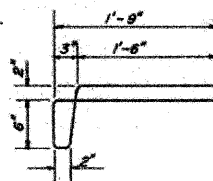
SECTION 4' PLANK
Shown in casting position

BILL OF CONCRETE PLANK

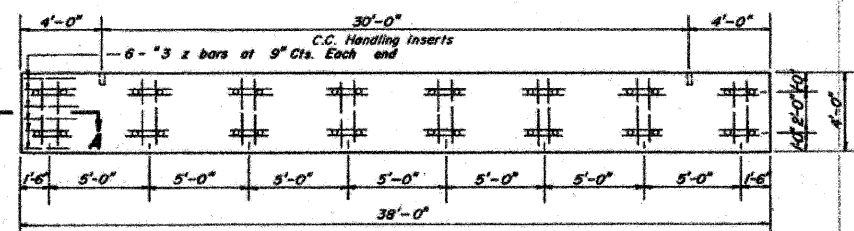
Mk.	No.	Width	Sq. Ft. Ea.	Total Sq. Ft.
4-A-38	6	4'	152	912
3-A-38	2	3'	114	228
4-C-24.5	4	4'	97	388
4-W-21	4	4'	84	336
4-W-16	4	4'	64	256
4-W-11	4	4'	44	176
3-W-6	4	3'	18	72
Total Sq. Ft.				2360



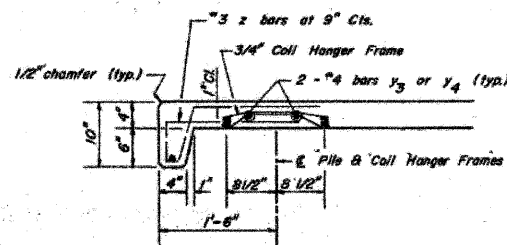
3-A-38
2 - Required



Z BAR



4-A-38
6 - Required



SECTION A-A

**CONCRETE PLANK DETAIL
EGG BAG CREEK
SECTION 138-G
LASALLE COUNTY
STATION 44+70.00**

EXISTING STRUCTURE PLANS

SHEET NO. 4 5 SHEETS	ROUTE NO.	SECTION	COUNTY	TOTAL SHEETS	SHEET NO.
	CH 29	10-00649-00-BR	LASALLE	43	32
	S.N. 050-3593		CONTRACT NO. 87430		
	FED. ROAD DIST. NO. 7 ILLINOIS		FED. AID PROJECT BR5-0099(043)		