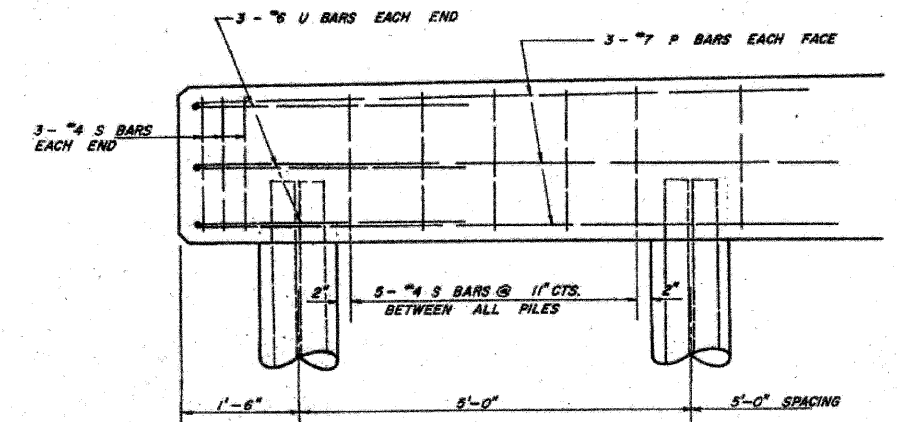
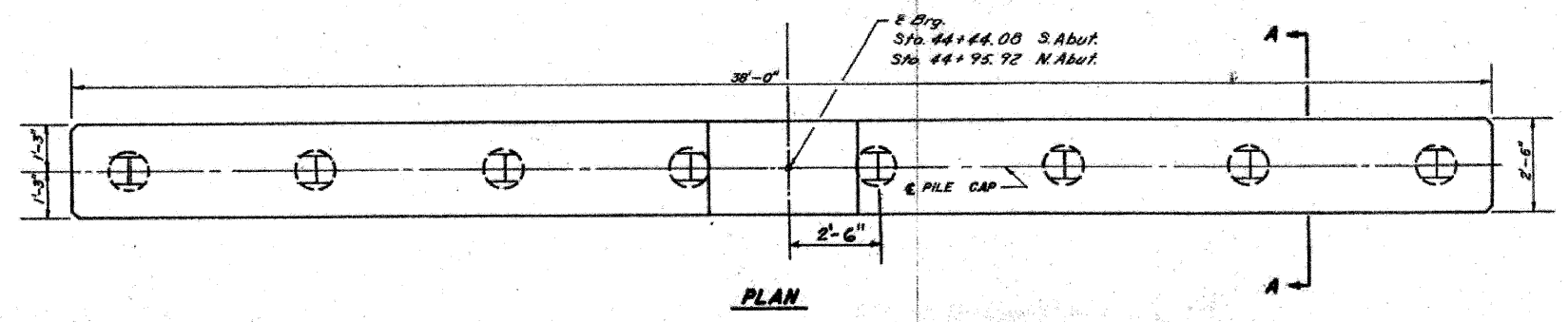


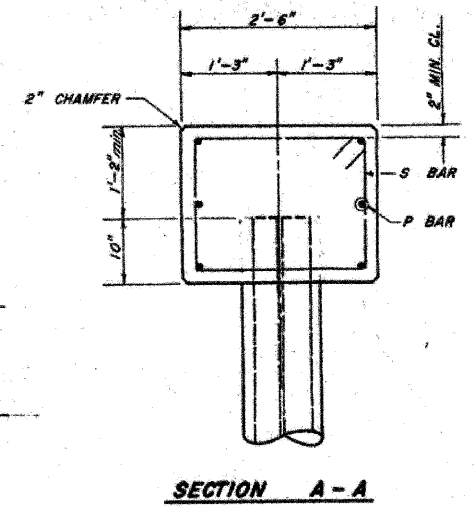
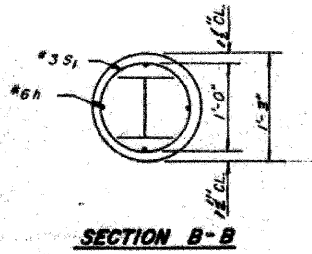
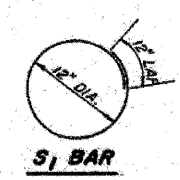
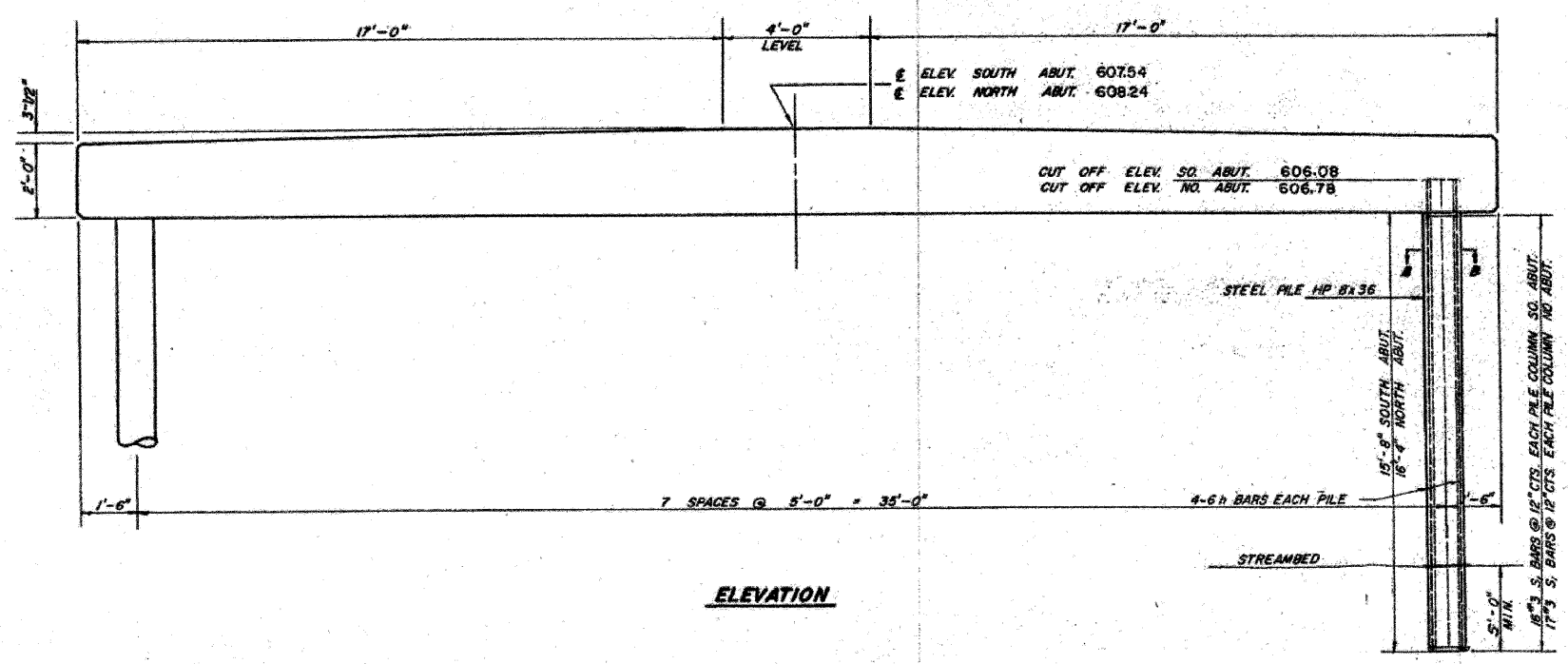
**BILL OF MATERIAL \***

BAR	NO.	SIZE	LENGTH	SHAPE
P	6	#7	37'-9"	—
S	41	#4	8'-5"	⊠
U	6	#6	9'-1"	U
REINFORCEMENT BARS			LBS.	775
CLASS X CONCRETE			CU. YD.	7.3

\* QUANTITY IS FOR ONE CAP ONLY



NOTE: ALL REINFORCEMENT BARS SHALL BE LAPPED A MINIMUM OF 24 BAR DIA.



Note: For setting of piles in rock see Special Provisions.

**CONCRETE PILE CAP  
EGG BAG CREEK  
SECTION 138-G  
LASALLE COUNTY  
STATION 44+70.00**

EXISTING STRUCTURE PLANS

SHEET NO. 3 5 SHEETS	ROUTE NO.	SECTION	COUNTY	TOTAL SHEETS	SHEET NO.
	CH 29	10-00649-00-BR	LASALLE	43	31
S.N. 050-3593			CONTRACT NO. 87430		
FED. ROAD DIST. NO. 7 ILLINOIS			FED. AID PROJECT BRS-0099(043)		