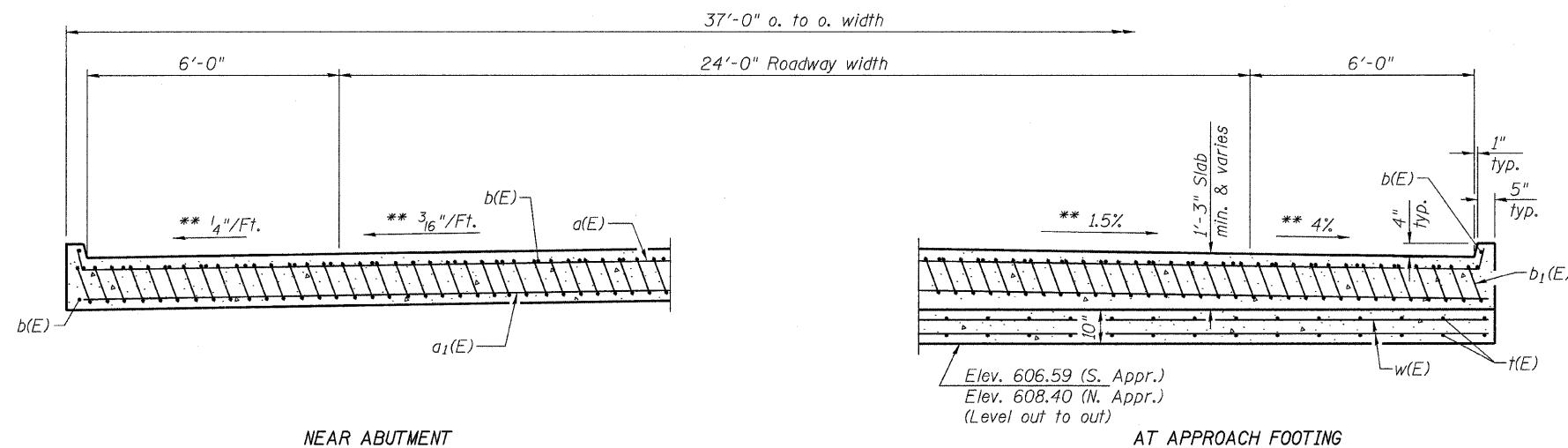


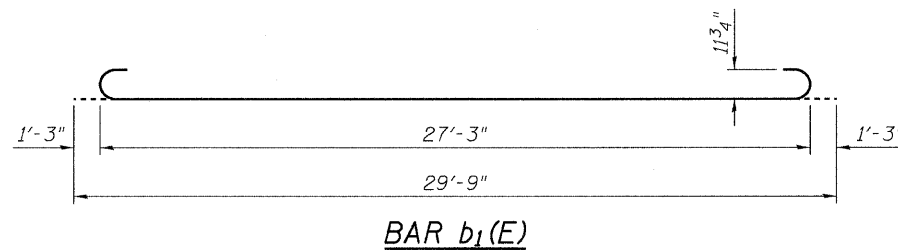
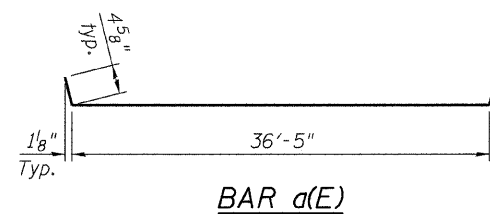
Notes:  
 For v(E) bar details, see sheet 8 of 21.  
 The approach footing maximum applied service bearing pressure (Q<sub>max</sub>) = 2.0 ksf.  
 For bar splicer details, see sheet 16 of 21.  
 For Porous Granular Embankment (Special) and drainage treatment details, see sheet 2 of 21.  
 Approach slab concrete shall be Class BS.  
 Approach footing concrete shall be Class SI.  
 The cost of concrete and reinforcement in approach slab and footing are included with Bridge Approach Pavement.  
 The cost of Excavation for approach footing is included with Bridge Approach Pavement.  
 The cost of tie bars between the existing and connector pavements is included with Bridge Approach Pavement Connector (PCC).



\* Tilt #9 b<sub>1</sub>(E) bars as required to maintain clearance.  
 \*\* Slopes transition on approach slab from 3/16"/Ft. to 1.5% on lanes and from 1/4"/Ft. to 4% on shoulders.  
 \*\*\* Cost included with Bridge Approach Pavement or Bridge Approach Pavement Connector (PCC), as applicable.

**BAR LIST**  
**ONE APPROACH PAVEMENT**

Bar	No.	Size	Length	Shape
a(E)	25	#4	37'-3"	—
a <sub>1</sub> (E)	46	#5	36'-8"	—
b(E)	41	#4	29'-8"	—
b <sub>1</sub> (E)	88	#9	29'-9"	—
t(E)	76	#4	9'-8"	—
w(E)	40	#5	36'-8"	—



**TWO APPROACHES**  
**BILL OF MATERIAL**

Item	Unit	Total
Bridge Approach Pavement	Sq Yd	247

(Sheet 2 of 2)  
**BRIDGE APPROACH SLAB DETAILS**

SHEET NO. 19	ROUTE NO.	SECTION	COUNTY	TOTAL SHEETS	SHEET NO.
	CH 29	10-00649-00-BR	LASALLE	43	26
21 SHEETS	S.N. 050-3593		CONTRACT NO. 87430		
FED. ROAD DIST. NO. 7 ILLINOIS			FED. AID PROJECT BRS-0099(043)		