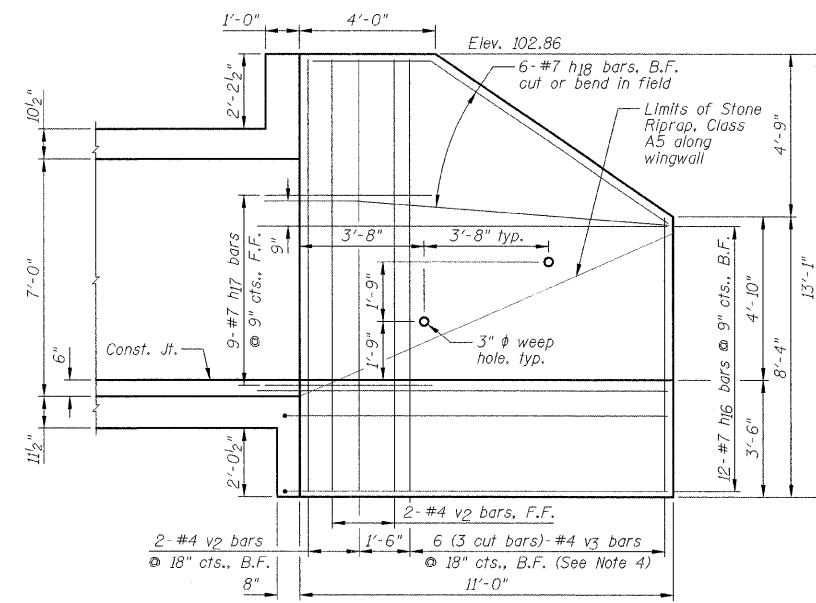
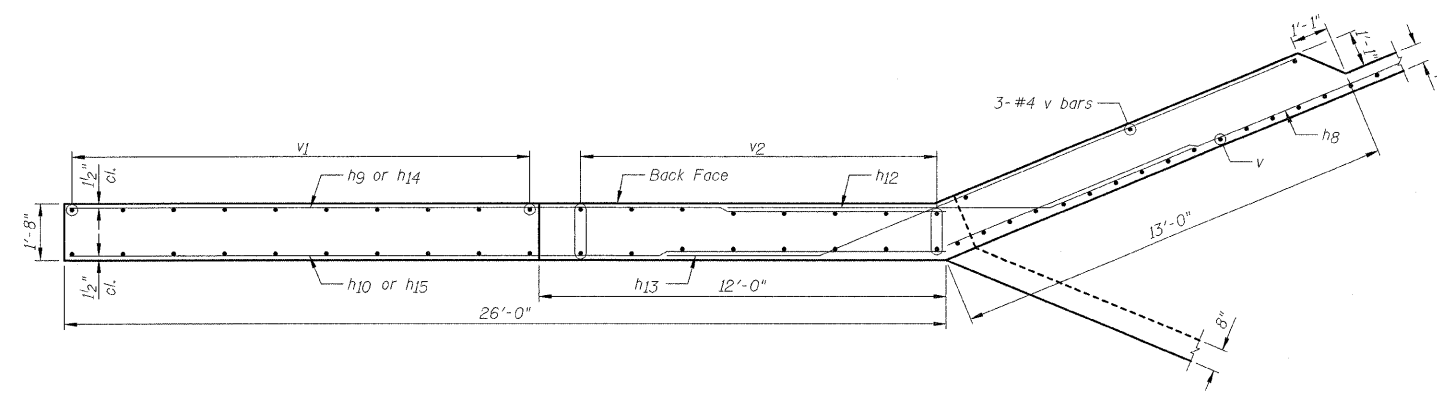


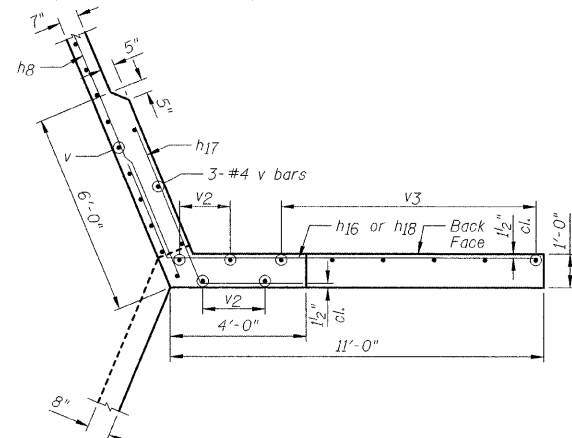
**NORTHWEST WINGWALL ELEVATION**



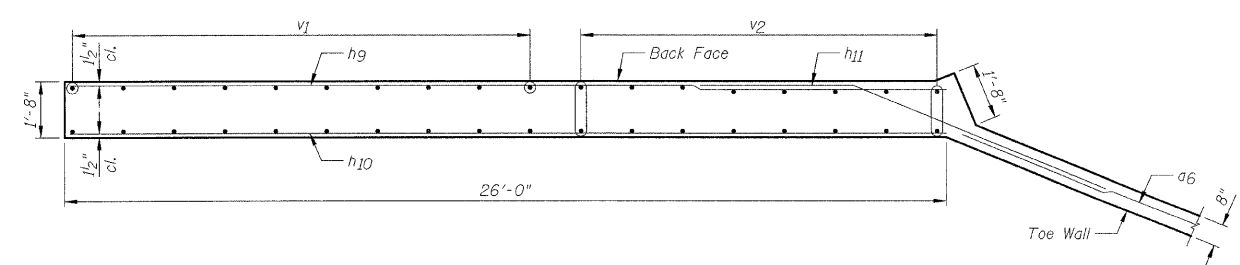
**SOUTHWEST WINGWALL ELEVATION**



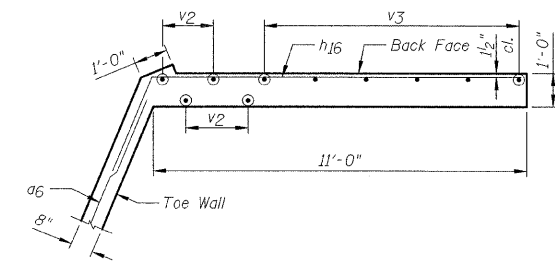
**NORTHWEST WINGWALL UPPER PLAN**



**SOUTHWEST WINGWALL UPPER PLAN**



**NORTHWEST WINGWALL LOWER PLAN**



**SOUTHWEST WINGWALL LOWER PLAN**

**NOTES:**

- 1.) For Bill of Material, see Sheet A2.
- 2.) For bar lap length, see the General Notes on Sheet A2.
- 3.) Order v1 bars full length. Cut according to the Bar Cutting Diagram on Sheet A2. Use remainder of v1 bars in Front Face of the wingwall.
- 4.) Order v3 bars full length. Cut according to the Bar Cutting Diagram on Sheet A2. Use all bars in the back face of the wingwall.

DESIGNED - JML	REVISED -
DRAWN - DJM	REVISED -
CHECKED - MSW	REVISED -
DATE - 10/21/09	REVISED -

**LIVINGSTON COUNTY DEPARTMENT OF HIGHWAYS**

**WINGWALL DETAILS**  
SCALE: SHEET NO. A5 OF 11 SHEETS STA. TO STA.

**WESTON ROAD (C.H. 10) OVER HICKORY CREEK  
SECTION 09-00120-03-BR  
LIVINGSTON, COUNTY  
STATION 23+87.00**

F.A.S.	SECTION	COUNTY	TOTAL SHEETS	SHEET NO.
349	09-00120-03-BR	LIVINGSTON	34	16
S.N. 053-5014		CONTRACT NO. 87412		
FED. ROAD DIST. NO.		ILLINOIS FED. AID PROJECT		