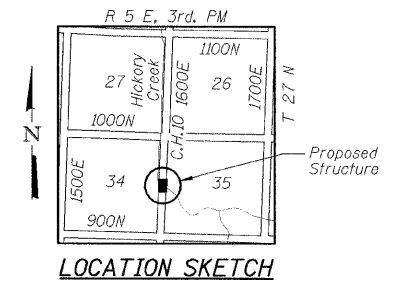
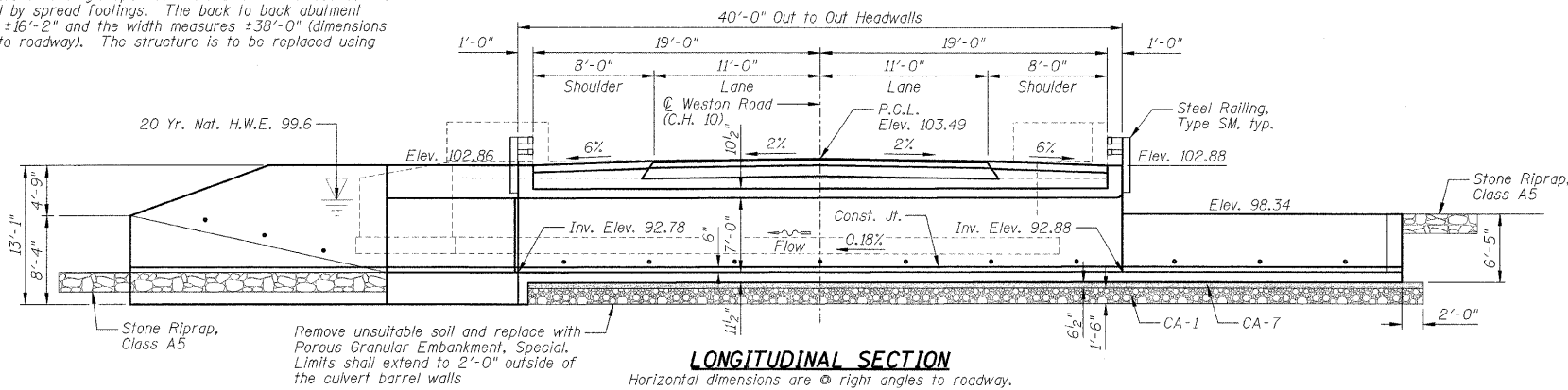


Benchmarks: #926, set PK nail Southwest corner hedge post at East-West crop line, ±150' North of North end of East guardrail on East side of C.H. 10, Elevation = 101.51/Sta. 26+54/40' RT.
 #1232, cut "X" on top East-most side of South-most I-Beam for guardrail, East side of C.H. 10, ±50' North of South end of guardrail, Elevation = 105.15/Sta. 22+17/17' RT.

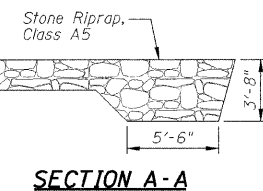
Existing Structure: SN 053-3440 was originally constructed in 1938 by Livingston County. The structure consists of a single span concrete slab with closed concrete abutments supported by spread footings. The back to back abutment dimension measures ±16'-2" and the width measures ±38'-0" (dimensions are @ right angles to roadway). The structure is to be replaced using road closure.

No Salvage.



WATERWAY INFORMATION

Drainage Area = 5.6 Sq. Mi.		Low Grade Elev. 103.45 ft. @ Sta. 23+87.00							
Flood Yr.	Q	Opening	Nat. Head	Prop. Head	Flow	Headwater El.			
Design	20	841	98	168	99.6	1.8	0.1	101.4	99.7
Base	100	1272	98	168	101.1	2.2	0.5	103.3	101.6
Overtopping									
Max. Calc.									



STATION 23+87.00
 BUILT 20... BY
 LIVINGSTON COUNTY
 F.A.S. RTE. 349
 SECTION 09-00120-03-BR
 LOADING HS25
 STR. NO. 053-5014

NAME PLATE
 See Standard 515001

DESIGN SPECIFICATIONS

AASHTO 2002 Standard Specifications for Highway Bridges

DESIGN STRESSES

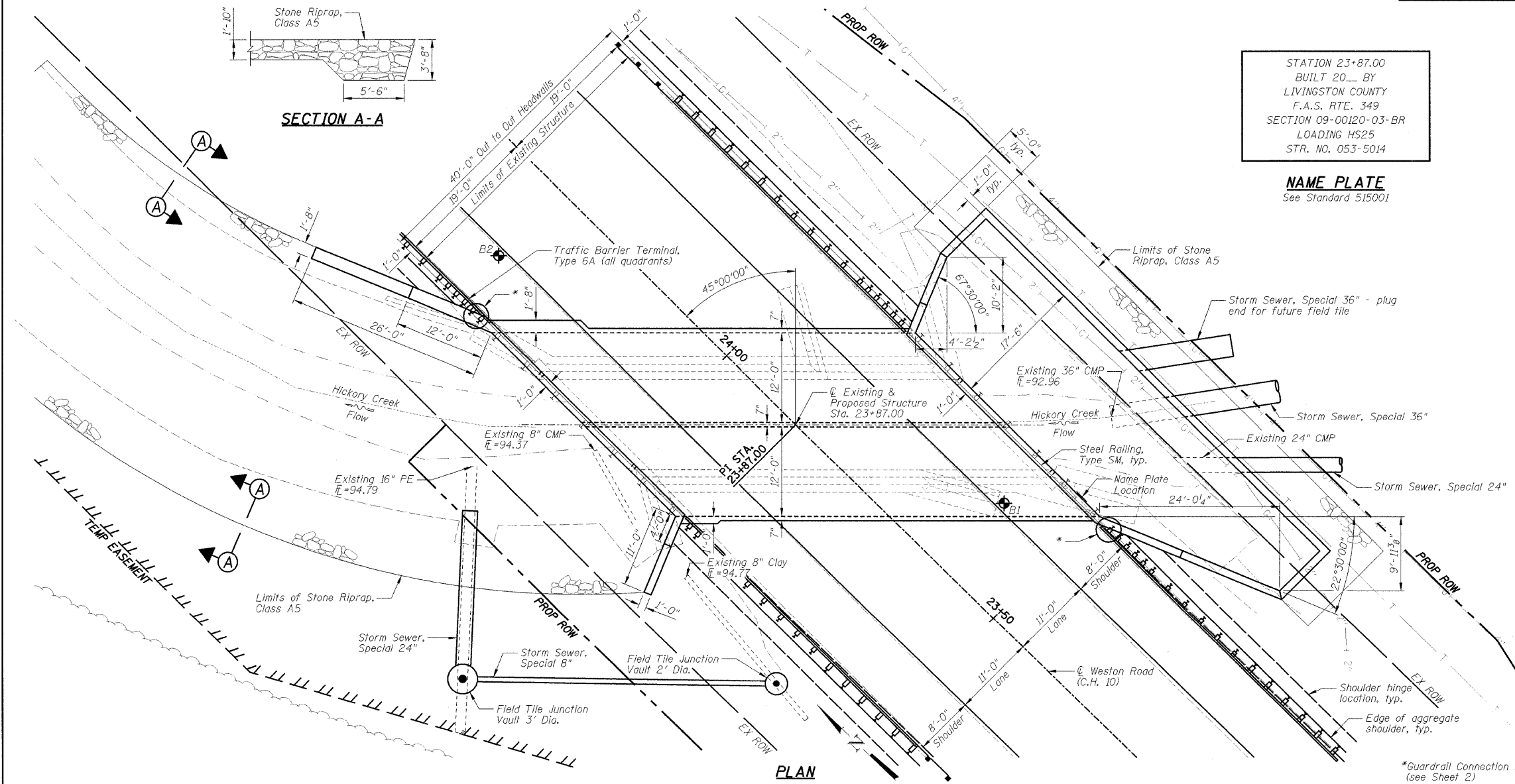
Cast-in-Place Concrete (Field Units)
 f'c = 4,000 psi @ 14 days
 fy = 60,000 psi (Reinforcement)

LOADING HS25

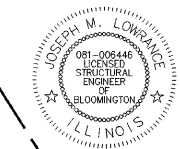
Allow 50#/sq. ft. for future wearing surface.

INDEX TO SHEETS

SHEET NO.	TITLE
A1	GENERAL PLAN AND ELEVATION
A2	GENERAL DATA
A3	BOTTOM & TOP SLAB REINFORCEMENT PLANS
A4	CULVERT WALL ELEVATIONS
A5	WINGWALL DETAILS
A6-A8	DROP BOX DETAILS
A9	STEEL RAILING, TYPE SM
A10-A11	SOIL BORING LOGS



I certify that to the best of my knowledge, this bridge design is structurally adequate for the design loading shown on the plans. The design is an economical one for the style of structure and complies with requirements of the current 'AASHTO Standard Specifications for Highway Bridges'.



Joseph M. Lowrance
 Date 10-21-09
 JOSEPH M. LOWRANCE
 ILLINOIS STRUCTURAL ENGINEER
 NO. 081-006446
 Exp. Date 11/30/10

*Guardrail Connection Detail (see Sheet 2)

P.G.L. denotes Profile Grade Line.

DESIGNED - JML	REVISED -	LIVINGSTON COUNTY DEPARTMENT OF HIGHWAYS	GENERAL PLAN AND ELEVATION	WESTON ROAD (C.H. 10) OVER HICKORY CREEK SECTION 09-00120-03-BR LIVINGSTON COUNTY STATION 23+87.00	F.A.S.	SECTION	COUNTY	TOTAL SHEETS	SHEET NO.
DRAWN - DJM	REVISED -				349	09-00120-03-BR	LIVINGSTON	34	12
CHECKED - MSW	REVISED -				S.N. 053-5014		CONTRACT NO. 87412		
DATE - 10/21/09	REVISED -				FED. ROAD DIST. NO.		ILLINOIS FED. AID PROJECT		
					SCALE:		SHEET NO. A1 OF 11 SHEETS		STA. TO STA.