

F.A.S.	SECTION	COUNTY	TOTAL SHEETS	SHEET NO.
349	09-00120-03-BR	LIVINGSTON	34	1
FED. ROAD DIST. NO.		ILLINOIS	CONTRACT NO. 87412	

INDEX OF SHEETS

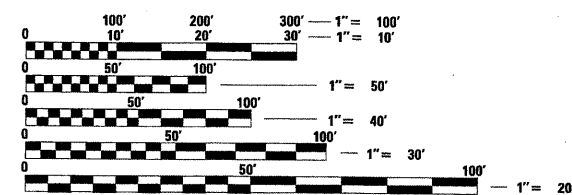
- 1 COVER SHEET
- 2 GENERAL NOTES, COMMITMENTS AND MISCELLANEOUS DETAILS
- 3 SUMMARY OF QUANTITIES
- 4 TYPICAL SECTIONS
- 5 SCHEDULE OF QUANTITIES
- 6 SURVEY TIES AND BENCHMARKS
- 7-8 PLAN AND PROFILE SHEETS
- 9-10 EROSION CONTROL PLANS
- 11 DETOUR PLAN
- 12-22 STRUCTURE PLANS S.N. 053-5014
- 23-30 STRUCTURE PLANS S.N. 053-5015
- 31-34 CROSS SECTIONS

HIGHWAY STANDARD DETAILS

- 000001-05 STANDARD SYMBOLS, ABBREVIATIONS AND PATTERNS
- 001001-02 AREAS OF REINFORCEMENT BARS
- 001006 DECIMAL OF AN INCH AND OF A FOOT
- 280001-05 TEMPORARY EROSION CONTROL SYSTEMS
- 515001-03 NAME PLATE FOR BRIDGES
- 630001-08 STEEL PLATE BEAM GUARDRAIL
- 630301-05 SHOULDER WIDENING FOR TYPE 1 (SPECIAL) GUARDRAIL TERMINALS
- 631032-05 TRAFFIC BARRIER TERMINAL, TYPE 6A
- 635006-03 REFLECTOR AND TERMINAL MARKER PLACEMENT
- 635011-02 REFLECTOR MARKER AND MOUNTING DETAILS
- 666001-01 RIGHT OF WAY MARKERS
- 701901-01 TRAFFIC CONTROL DEVICES
- 720001-01 SIGN PANEL MOUNTING DETAILS
- 720011-01 METAL POSTS FOR SIGNS, MARKERS & DELINEATORS
- B.L.R. 21-8 TYPICAL APPLICATION OF TRAFFIC CONTROL DEVICES FOR CONSTRUCTION ON RURAL LOCAL HIGHWAYS
- B.L.R. 22-6 TYPICAL APPLICATION OF TRAFFIC CONTROL DEVICES FOR CONSTRUCTION ON RURAL LOCAL HIGHWAYS

UTILITIES:

- POWER - COMMONWEALTH EDISON (NORTH STRUCTURE)
- TELEPHONE - VERIZON
- GAS - NICOR



FULL SIZE PLANS HAVE BEEN PREPARED USING STANDARD ENGINEERING SCALES. REDUCED SIZED PLANS WILL NOT CONFORM TO STANDARD SCALES. IN MAKING MEASUREMENTS ON REDUCED PLANS, THE ABOVE SCALES MAY BE USED.

J.U.L.I.E.
JOINT UTILITY LOCATION INFORMATION FOR EXCAVATION
1-800-892-0123
OR 811

JOB NUMBER C-93-134-09
CONTRACT NUMBER 87412
CONSTRUCTION TYPE CODE: ROADWAY: 1000
BRIDGE: X028-2A

STATE OF ILLINOIS

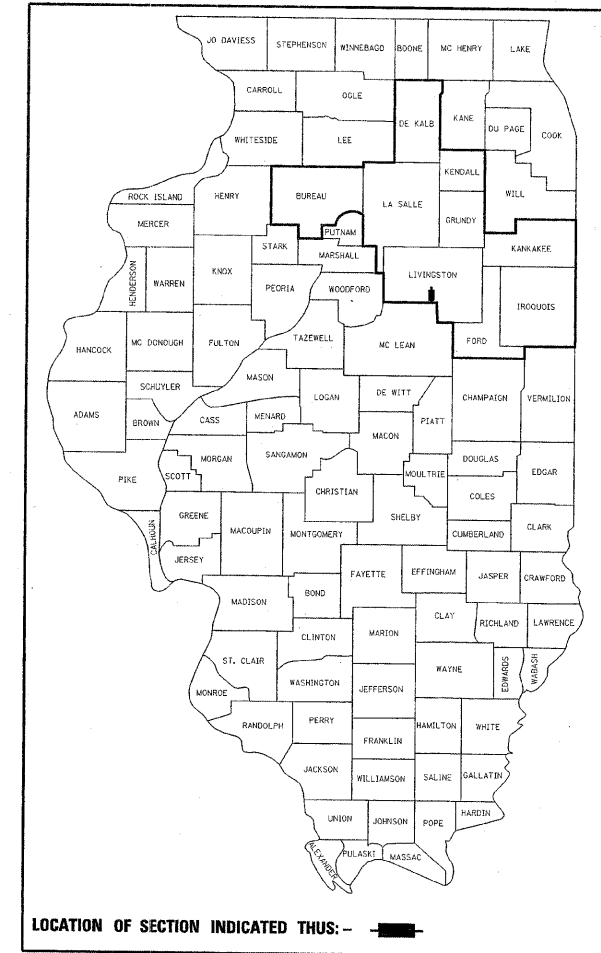
DEPARTMENT OF TRANSPORTATION

DIVISION OF HIGHWAYS

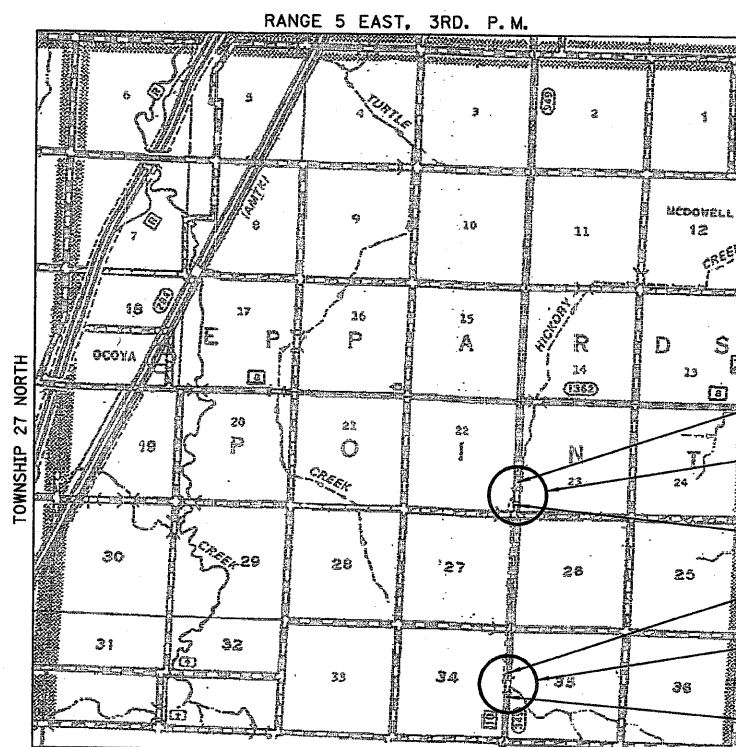
**PLANS FOR PROPOSED
AMERICAN RECOVERY
AND REINVESTMENT ACT**

**LIVINGSTON COUNTY
SECTION 09-00120-03-BR
F.A.S. RTE. 349 (C.H. 10)
FEDERAL PROJECT ARA-0349(114)**

C-93-134-09



LOCATION OF SECTION INDICATED THUS: - [black rectangle] -



LOCATION MAP

GROSS LENGTH OF PROJECT = 9300.00 FT = 1.761 MILE
NET LENGTH OF PROJECT = 375.00 FT = 0.071 MILE

FUNCTIONAL CLASSIFICATION: MAJOR COLLECTOR (NON-URBAN)
DESIGN SPEED: 55 MPH
DESIGN TRAFFIC: 1800 (2029)
% TRUCKS: 13.0
% PASSENGER VEHICLES: 87.0

- IMPROVEMENT ENDS STA. 116+00.00
- PROPOSED STRUCTURE NO. 053-5015 AT STATION 115+00.00 STRUCTURE REPLACEMENT OVER HICKORY CREEK
- IMPROVEMENT BEGINS STA. 114+00.00
- IMPROVEMENT ENDS STA. 24+75.00
- PROPOSED STRUCTURE NO. 053-5014 AT STATION 23+87.00 STRUCTURE REPLACEMENT OVER HICKORY CREEK
- IMPROVEMENT BEGINS STA. 23+00.00

APPROVED	10/21	20 09
<i>Mark S. Wylie</i> LIVINGSTON COUNTY HIGHWAY ENGINEER		
PASSED	10-26	20 09
<i>Harold C. Long</i> DISTRICT ENGINEER OF LOCAL ROADS & STREETS		
APPROVED	10-26	20 09
<i>Thomas E. Ryan</i> DEPUTY DIRECTOR OF HIGHWAYS, REGION ENGINEER		
STATE OF ILLINOIS DEPARTMENT OF TRANSPORTATION		



Mark S. Wylie Date 10/21/09
MARK S. WYLIE
ILLINOIS PROFESSIONAL ENGINEER
NO. 062-043716
EXPIRATION 11/30/09