

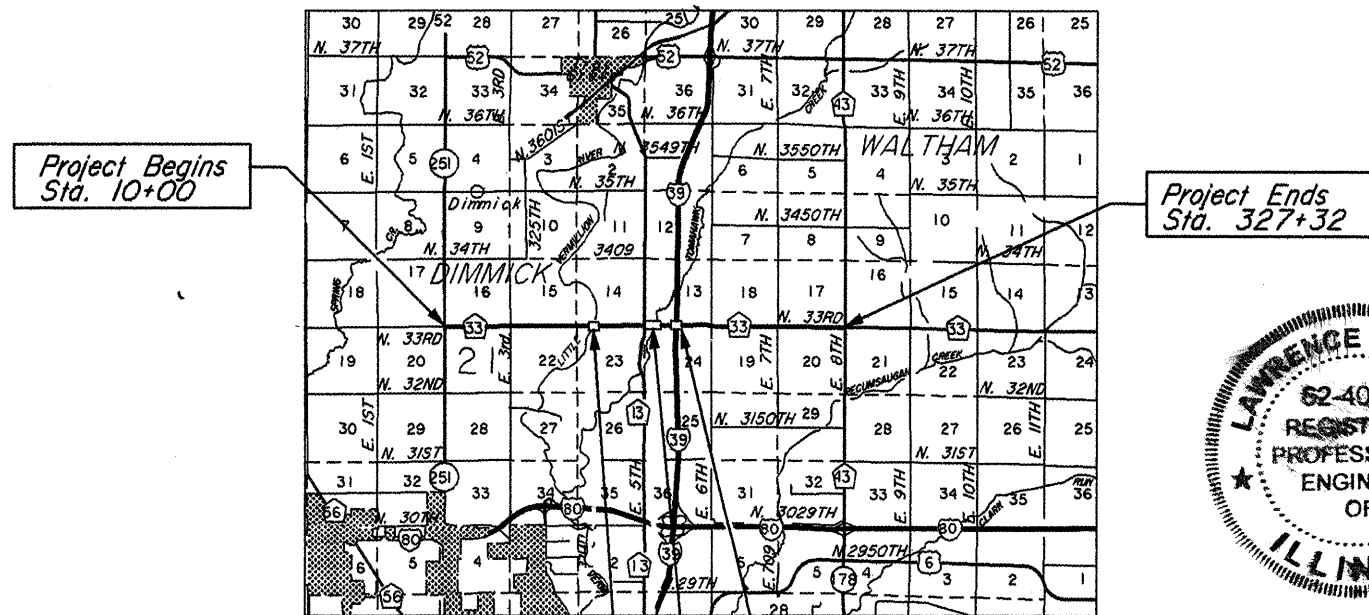
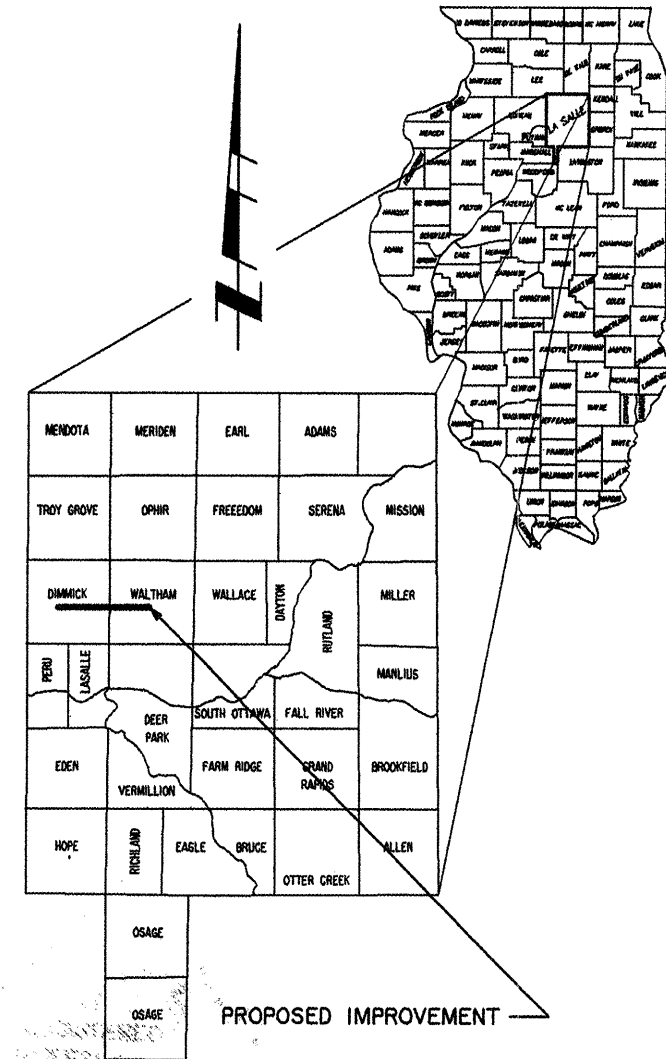
INDEX OF SHEETS

1. COVER SHEET
2. TYPICAL SECTIONS, SUMMARY OF QUANTITIES, AND GENERAL NOTES
3. QUANTITY SCHEDULES
4. DETAILS

STANDARDS

- 701301-03 TYPICAL APPLICATION OF TRAFFIC CONTROL DEVICES
- 701306-02 TYPICAL APPLICATION OF TRAFFIC CONTROL DEVICES
- 701311-03 TYPICAL APPLICATION OF TRAFFIC CONTROL DEVICES
- 701901-01 TYPICAL APPLICATION OF TRAFFIC CONTROL DEVICES
- BLR 23-3 TRAFFIC BARRIER TERMINAL TYPE 1
- BLR 26-2 STEEL PLATE BEAM GUARDRAIL 700mm (27 1/2") HEIGHT

STATE OF ILLINOIS
DEPARTMENT OF TRANSPORTATION
LASALLE COUNTY
PLANS FOR PROPOSED
FEDERAL-AID LAPP PROJECT
AMERICAN RECOVERY AND REINVESTMENT ACT
F.A.S. ROUTE 1365 SECTION II-00254-00-RS
PROJECTARA-1365(II2) JOB NO. C-93-079-09



PREVIOUS SECTIONS

112G, 112A, 112Q, 113G, 113A, 113Q, 1128113Q-1,
79-00220-00-RS, 91-00254-00-RS



THESE PLANS WERE PREPARED BY A FULL-TIME MEMBER OF MY STAFF WORKING UNDER MY PERSONAL SUPERVISION

10/14/2009
DATED

Lawrence J. Kinzer

LAWRENCE J. KINZER
LASALLE COUNTY ENGINEER
I.R.P.E. NO. 62-40162
EXP. DATE 11-30-09

Black's Bridge Omission
Sta. 119+16 to Sta. 136+66

1-39 Overpass Omission
Sta. 192+55 to Sta. 195+10

Bowers Bridge Omission
Sta. 168+77 to Sta. 181+27

GROSS LENGTH: 31,732 FT. = 6.009 MI.

OMISSIONS: STA.119+16 TO STA.136+66 = 1,750.00 FOOT (0.3314 MI.)
OMISSIONS: STA.168+77 TO STA.181+27 = 1,250.00 FOOT (0.2367 MI.)
OMISSIONS: STA.192+55 TO STA.195+10 = 255.00 FOOT (0.04830 MI.)

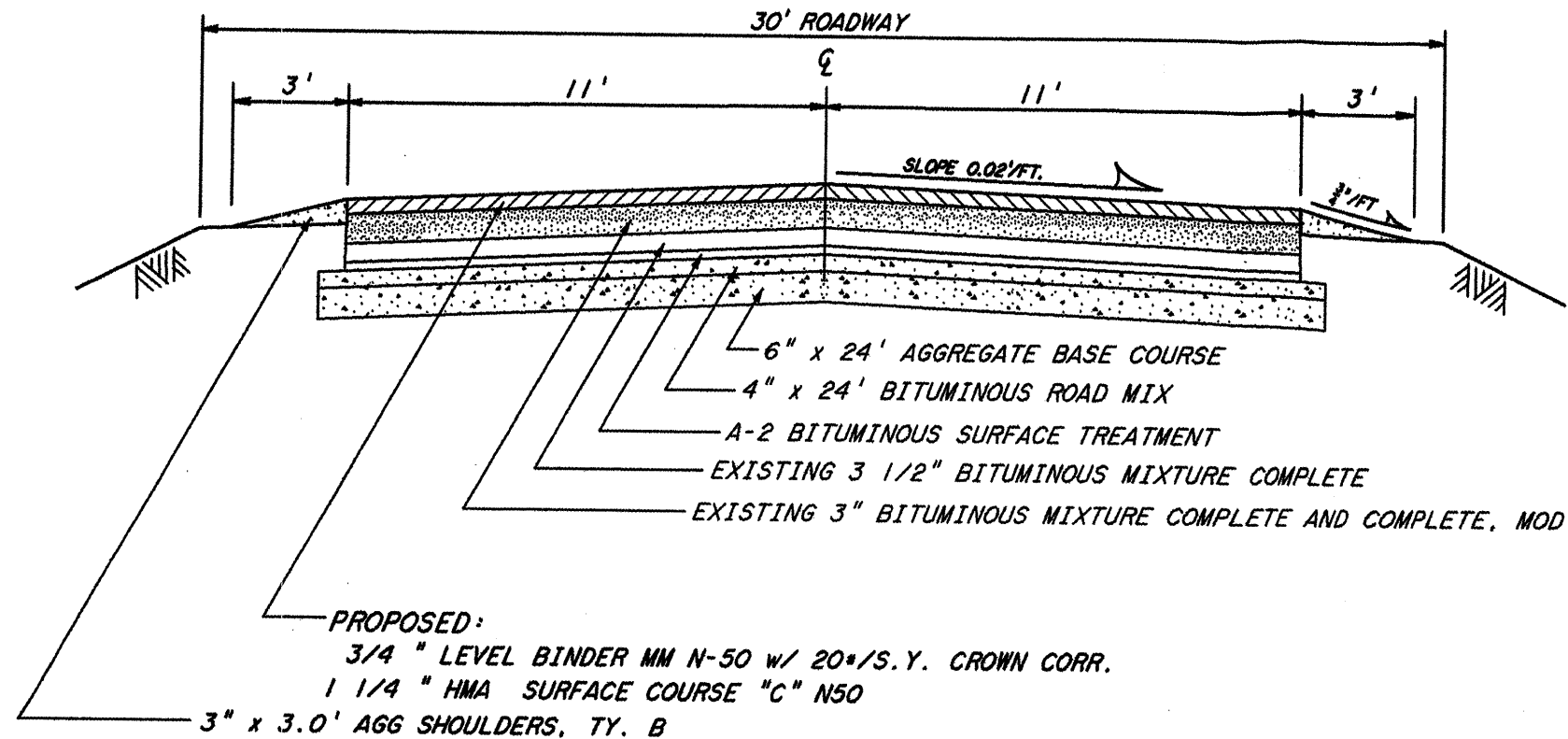
NET LENGTH: 28,473 FT. = 5.393 MI.

THE ACCEPTANCE OF THIS PROJECT IS BASED ON THE MINIMUM DESIGN CRITERIA FOR A FEDERAL AID LAPP

PASSED: October 21, 2009
Ken... District Engineer of Roads and Streets
APPROVED: October 21, 2009
George... Deputy Director Region 2 Engineer
STATE OF ILLINOIS
DEPARTMENT OF TRANSPORTATION

CONTRACT NUMBER 87389

ROUTE NUMBER	SECTION	COUNTY	TOTAL SHEETS	SHEET NO.
FAS 1365	11-00254-00-RS	LASALLE	4	2 of 4
			CONTRACT 87389	



PROPOSED TYPICAL SECTION
STA. 10+00 TO STA. 327+32

SUMMARY OF QUANTITIES			
ITEM #	ITEM	QUANTITY	UNIT
* 40600100	BITUMINOUS MATERIALS (PRIME COAT)	7,390	GALLON
* 40600105	BITUMINOUS MATERIALS (PRIME COAT), SPECIAL	148	GALLON
40600300	AGGREGATE (PRIME COAT)	148	TON
* 40600625	LEVELING BINDER (MACHINE METHOD), N50	3,760	TON
* 40600982	HOT-MIX ASPHALT SURFACE REMOVAL-BUTT JOINT	673	SQ.YD.
* 40603310	HOT-MIX ASPHALT SURFACE COURSE, MIX "C", N50	5,062	TON
40800050	INCIDENTAL HOT-MIX ASPHALT SURFACING	200	TON
* 48101200	AGGREGATE SHOULDERS, TYPE-B	2,710	TON
△ 63300905	VERTICAL ADJUSTMENT OF SPBGR, TYPE A	600	FOOT
△ 63300925	VERTICAL ADJUSTMENT OF TRAFFIC BARRIER TERMINAL, TYPE 1	4	EACH
70300100	SHORT-TERM PAVEMENT MARKING	5,695	FOOT
67100100	MOBILIZATION	1	L SUM
70100460	TRAFFIC CONTROL AND PROTECTION, STANDARD 701306	1	L SUM
△ 78001110	PAINT PAVEMENT MARKING - LINE 4"	72,664	FOOT
△ 78003180	PREFORMED PLASTIC PAVEMENT MARKING, TYPE B - LINE 24"	15	FOOT
△ 78200455	BIDIRECTIONAL GUARDRAIL REFLECTORS	4	EACH

* See Special Provisions

△ SPECIALTY ITEMS

MIXTURE REQUIREMENTS

LOCATION:	11-00254-00-RS	
MIXTURE USE:	LEVEL BINDER MACHINE METHOD, N50	HMA SURFACE COURSE MIX C, N50
PG GRADE:	PG64-22	PG64-22
DESIGN AIR VOIDS:	4.0 % @ N50	4.0 % @ N50
MIXTURE COMPOSITION:	IL-9.5	IL-9.5
FRICTION AGGREGATE:		MIXTURE C
PLANT CONTROL LIMITS:	CLASS 1	
DENSITY CONTROL METHOD:		

GENERAL NOTES

THE THICKNESS OF THE BITUMINOUS MIXTURES SHOWN ON THE PLANS IS THE NOMINAL THICKNESS. DEVIATIONS FROM THE NOMINAL THICKNESS WILL BE PERMITTED WHEN SUCH DEVIATIONS OCCUR DUE TO IRREGULARITIES IN THE EXISTING SURFACE OR BASE ON WHICH THE BITUMINOUS MIXTURE IS PLACED.

THE BITUMINOUS SURFACE OF ALL MAILBOX TURNOUTS, PRIVATE ENTRANCES, COMMERCIAL ENTRANCES, AND SIDE ROADS SHALL BE MADE NEATLY, IN A WORKMANLIKE MANNER, AND SHALL ACCURATELY CONFORM TO THE SHAPES AND DIMENSIONS SHOWN ON THE PLAN DETAILS. IF REQUIRED BY THE ENGINEER, THE CONTRACTOR SHALL BE REQUIRED TO SAW CUT THE BITUMINOUS SURFACE TO CONFORM TO THE SHAPES AND DIMENSIONS SHOWN ON THE PLAN DETAILS. THIS WORK SHALL BE INCLUDED IN THE COST OF THE BITUMINOUS SURFACE.

THE ENGINEER WILL BE THE SOLE JUDGE CONCERNING CURING TIME FOR THE VARIOUS BITUMINOUS LIFTS.

ADDITIONAL BINDER COURSE MATERIAL, AT THE RATE GIVEN ON THE TYPICAL SECTIONS, HAS BEEN ADDED TO THE QUANTITIES FOR CROWN CORRECTION.

ANY REFERENCE TO A STANDARD IN THESE PLANS SHALL BE INTERPRETED TO MEAN THE EDITION AS INDICATED BY THE SUBNUMBER LISTED ON THE INDEX OF SHEETS OR THE COPY OF THE STANDARD INCLUDED IN THESE PLANS.

EXISTING SUPERELEVATION RATES ARE TO BE MATCHED WITH THE FULL DEPTH OF THE APPLICABLE TYPICAL SECTION

THE FOLLOWING RATES OF APPLICATION HAVE BEEN USED IN CALCULATING PLAN QUANTITIES.

GRANULAR MATERIALS	2.05 TONS/CU YD
BITUMINOUS MATERIALS (PRIME COAT)	0.10 GAL/SQ YD
BITUMINOUS MATERIALS (PRIME COAT), SPECIAL	0.30 GAL/SQ YD
AGGREGATE (PRIME COAT)	0.002 TONS/SQ YD
BITUMINOUS CONCRETE BINDER AND SURFACE COURSE	112 LBS/SQ YD/INCH
SHORT-TERM PAVEMENT MARKING	4 FT/40 FT EACH APPLICATION

TYPICAL SECTION, SUMMARY OF QUANTITIES AND GENERAL NOTES

ROUTE NUMBER	SECTION	COUNTY	TOTAL SHEETS	SHEET NO.
FAS 1365	II-00254-00-RS	LASALLE	4	3 of 4
			CONTRACT 87389	

PAVING SCHEDULE										
STA. to STA.	SURFACE WIDTH	LENGTH	AREA	BIT. MAT. (PR. CT.)	AGG. (PR. CT)	INCIDENTAL HMA SURFACING	LEV BIND MM N50	HMA ASPHALT SURF. CSE. MIX C N50	AGG. SHLDS, TY-B	SHORT-TERM PAV'T
	FEET	FEET	SQ. YD.	0.1 Gal/SY GAL	4#/Sq Yd TON	TON	3/4" ** TON	1 1/4" TON	2.05 Ton/Cu Yd TON	FOOT
10+00 to 327+32	22.3	28,477 *	70,560	7055.97	141.1		3669	4939	2500	5695.4
PRIVATE ENTRANCES			1,588	158.82	3.2	200				
FIELD ENTRANCES			259	25.92	0.5		13	18	210 ***	
INTERSECTIONS			1,064	106.36	2.1		55	74		
MAILBOX TURNOUTS			274	27.36	0.5		14	19		
PAVED SHOULDERS			151	15.14	0.3		8	11		
TOTAL			73,896	7390	148	200	3760	5062	2710	5695

* Includes Omissions
 ** Includes 20# Crown Correction
 *** Includes 5 Ton per Standard Field Entrance

HMA SURF. REM. - BUTT. JOINT		
STATION	SIDE	SQ YD
10+00	CL	100
56+83	RT	15
57+18	LT	10
58+81	LT	10
59+24	LT	10
60+70	LT	33
168+77	LT	49
168+77	RT	49
168+77	CL	49
181+00	CL	56
192+55	CL	56
195+10	CL	56
184+49	LT	22
199+32	RT	29
213+58	LT	24
320+89	LT	5
327+32	CL	100
TOTAL		673

FIELD ENTRANCES					
STATION	SIDE	SQ YD	STATION	SIDE	SQ YD
12+06	RT	6.3	157+62	RT	6.3
16+72	LT	6.3	160+21	RT	6.3
29+60	RT	6.3	160+80	RT	6.3
36+37	LT	6.3	184+00	RT	11.7
36+38	RT	6.3	198+78	LT	6.3
37+07	RT	6.3	228+25	LT	6.3
48+80	RT	6.3	240+82	RT	11.7
49+23	LT	6.3	247+23	LT	11.7
51+92	LT	6.3	247+30	RT	6.3
53+51	RT	6.3	253+78	RT	6.3
79+32	LT	6.3	260+45	LT	6.3
89+19	RT	6.3	260+72	RT	6.3
91+16	LT	11.7	300+56	LT	11.7
96+17	RT	6.3	305+46	LT	6.3
102+42	LT	11.7	306+69	RT	6.3
136+22	LT	6.3	313+61	RT	6.3
141+92	RT	6.3	313+65	LT	6.3
154+89	RT	6.3	320+71	RT	6.3
TOTAL			259		

GUARDRAIL				
STATION	SIDE	SPBGR	TRAFFIC BAR TERM T1	
		VERTICAL ADJUST TY A	VERTICAL ADJUST	GUARDRAIL REFLECTORS
190+54 to 190+79	LT		1.0	
190+54 to 190+79	RT		1.0	
190+79 to 192+29	LT	150.0		1.0
190+79 to 192+29	RT	150.0		1.0
195.35 to 196+85	LT	150.0		1.0
195+35 to 196+85	RT	150.0		1.0
196+85 to 197+10	LT		1.0	
196+85 to 197+10	RT		1.0	
		600.0	4.0	4.0

PRIVATE ENTRANCES					
STATION	SIDE	SQ YD	STATION	SIDE	SQ YD
27+65	LT	53.1	199+32	RT	88.5
57+18	LT	53.1	200+10	LT	53.1
58+81	LT	53.1	200+95	LT	53.1
59+24	LT	53.1	208+27	LT	56.3
60+70	LT	101.4	213+58	LT	62.8
84+31	LT	56.3	214+33	LT	43.4
103+82	RT	53.1	215+39	LT	62.8
104+68	RT	53.1	230+38	RT	56.3
109+21	LT	56.3	236+55	LT	56.3
115+50	RT	62.8	242+27	LT	43.4
141+40	LT	56.3	251+91	RT	56.3
147+52	LT	62.8	301+68	RT	56.3
152+03	RT	62.8	320+89	LT	53.1
184+49	LT	69.2			
TOTAL			1588		

INTERSECTIONS			
STATION	LOCATION	SIDE	SQ YD
10+00	L Rte 251	L&R	119.2
56+83	E 289th RD	RT	93.7
62+88	E 3rd RD	LT	100.6
62+88	E 3rd RD	RT	100.6
168+77	C.H. 13	LT	90.9
168+77	C.H. 13	CL	90.9
168+77	C.H. 13	RT	90.9
222+14	E 6th RD	LT	88.1
222+20	E 6th RD	RT	88.1
273+88	E 7th RD	LT	85.4
273+88	E 7th RD	RT	85.4
327+32	C.H. 43	L&R	29.8
TOTAL			1064

PAVEMENT MARKING	
PAINT	
YELLOW LINE 4"	WHITE LINE 4"
FOOT	FOOT
15318	57346
TOTAL	72,664

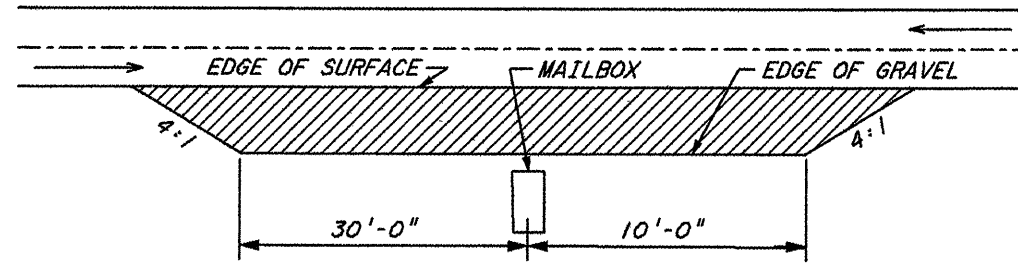
MAIL BOX TURNOUT			
STATION	SIDE	WIDTH	SQ YD
115+86	RT	3	17
148+19	RT	3	17
152+28	RT	3	17
200+25	LT	6	43
208+07	LT	3	17
215+33	LT	4	25
230+11	RT	3	17
242+02	LT	6	43
251+55	RT	3	17
252+28	RT	3	17
301+99	RT	3	17
320+95	LT	4	25
TOTAL			274

PAVED SHOULDER			
STATION	SIDE	WIDTH	SQ YD
115+27 to 119+16	LT	1.75	76
115+27 to 119+16	RT	1.75	76
TOTAL			151

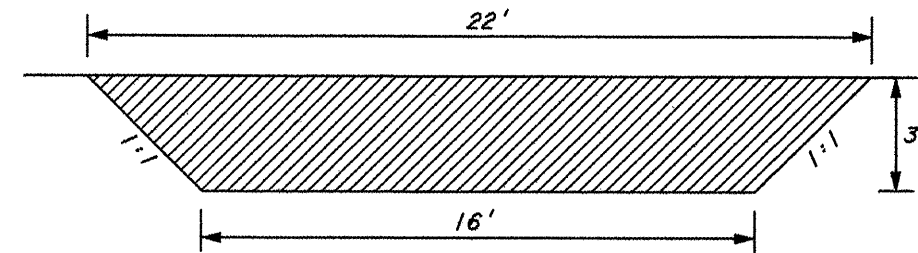
PREFORMED PLASTIC PAVEMENT MARKING TY B - INLAID APPLICATION	
WHITE LINE 24"	
FOOT	
15	

QUANTITY SCHEDULES

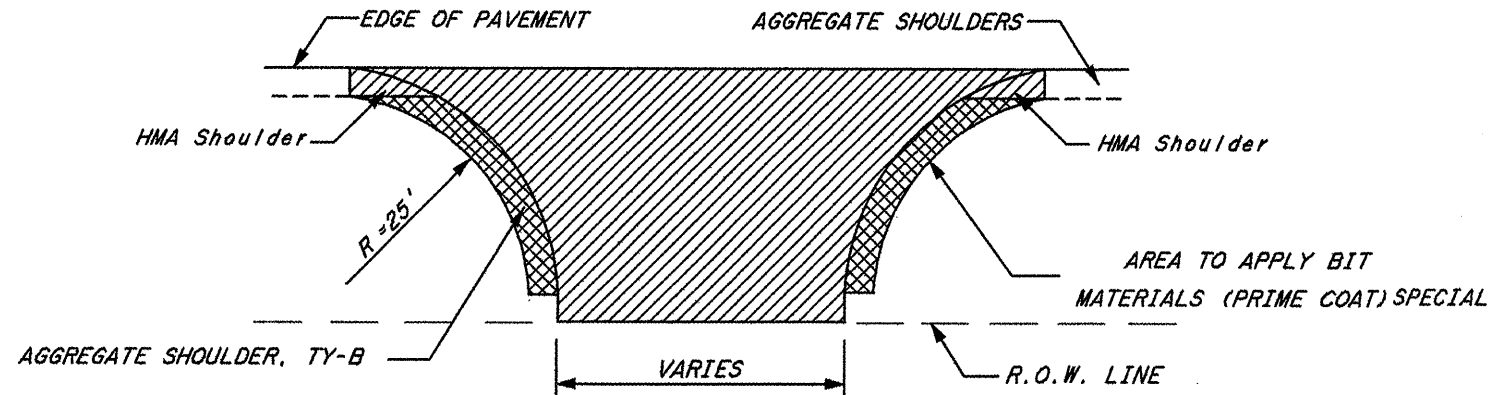
ROUTE NUMBER	SECTION	COUNTY	TOTAL SHEETS	SHEET NO.
FAS 1365	11-00254-00-RS	LASALLE	4	4 of 4
			CONTRACT	87389



TYPICAL MAILBOX TURNOUT

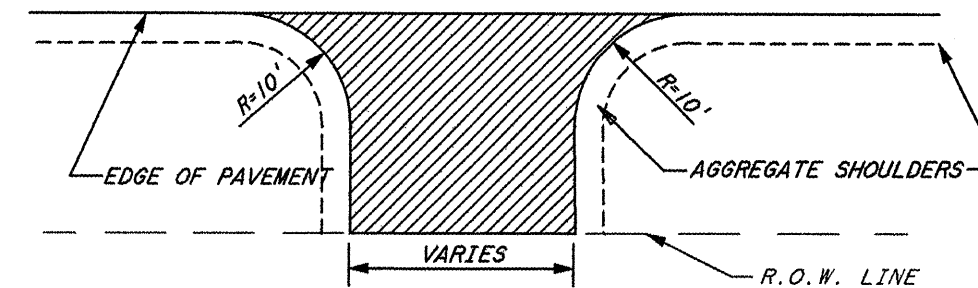


TYPICAL FIELD ENTRANCE

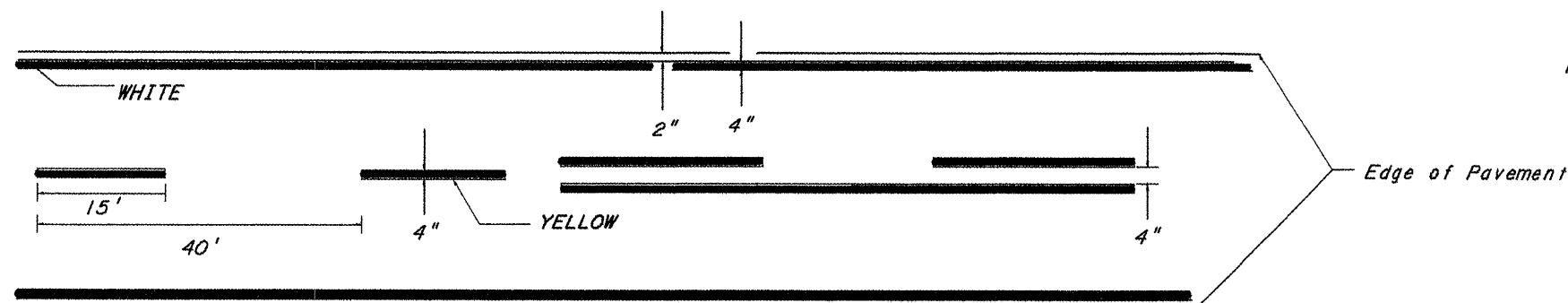


TYPICAL INTERSECTION

NOTE: AGGREGATE SHOULDERS IN THE RADIUS AREA OF SIDEROADS SHALL BE APPLIED WITH MC-30 AT THE RATE SPECIFIED IN THE SPECIAL PROVISIONS. THIS OPERATION SHALL BE PAID FOR AS BITUMINOUS MATERIALS (PRIME COAT), SPECIAL

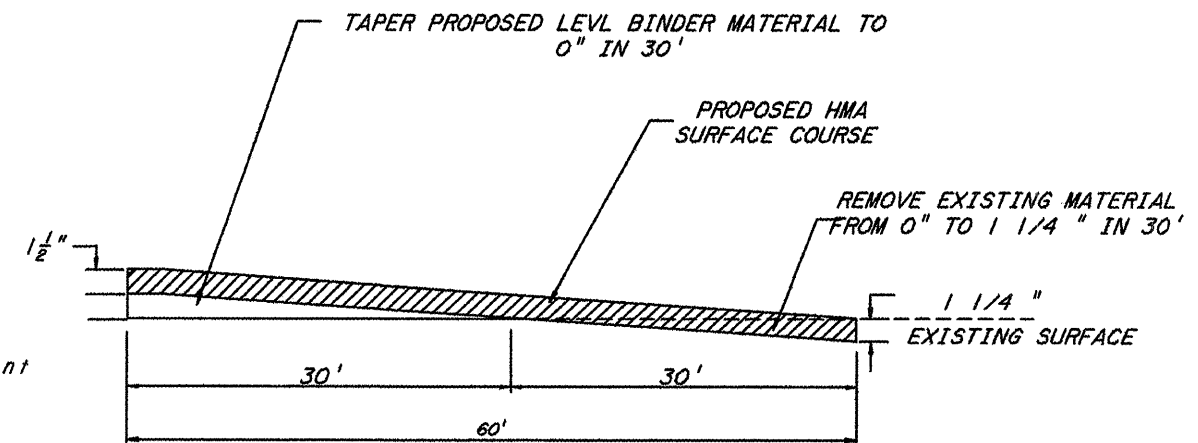


TYPICAL PRIVATE ENTRANCE



PAINTING DETAIL

LASALLE COUNTY FORCES MAINTAIN A 2-GUN SYSTEM. PAINT OPERATION SHOULD REFLECT LASALLE COUNTY'S SYSTEM.



TAPER DETAIL

SEE HMA SURFACE REMOVAL - BUTT JOINT SCHEDULE FOR LOCATIONS