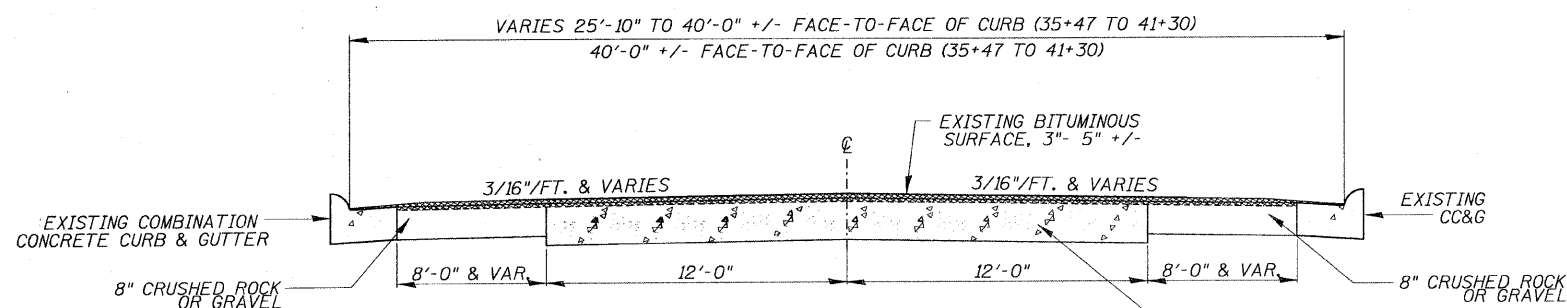


- BITUMINOUS SURFACE REMOVAL, 1 1/4"
- HMA REPLACEMENT-
  - 3/4" HMA LEVELING BINDER, N50
  - AREA REFLECTIVE CRACK CONTROL TREATMENT, SYSTEM A (PLACE ON LEVELING BINDER)
  - 1 3/4" HMA SURFACE COURSE, MIX "D", N50

**TYPICAL SECTION**

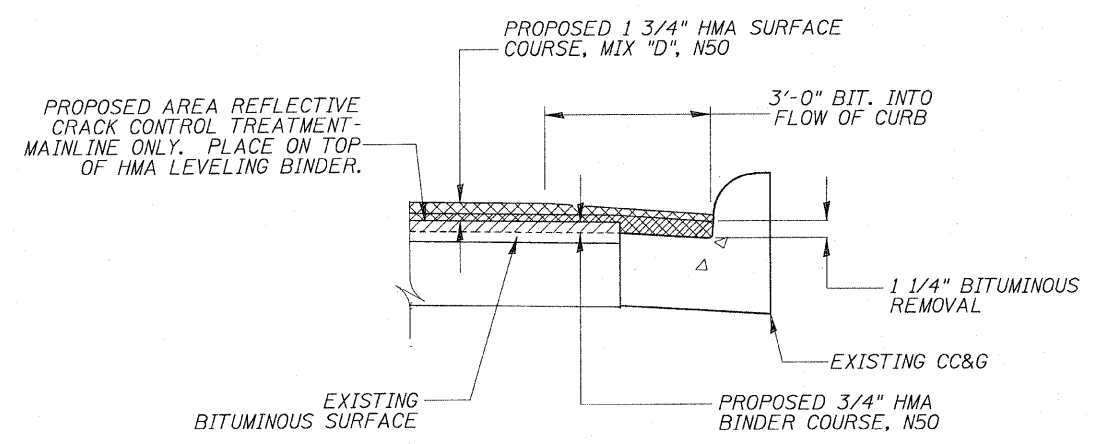
STATION 41+30.00 TO STATION 64+10.00



- BITUMINOUS SURFACE REMOVAL, 1 1/4"
- HMA REPLACEMENT-
  - 3/4" HMA LEVELING BINDER, N50
  - AREA REFLECTIVE CRACK CONTROL TREATMENT, SYSTEM A (PLACE ON LEVELING BINDER)
  - 1 3/4" HMA SURFACE COURSE, MIX "D", N50

**TYPICAL SECTION**

STATION 34+55.00 TO STATION 41+30.00



- BITUMINOUS SURFACE REMOVAL, 1 1/4"
- HMA REPLACEMENT-
  - 3/4" HMA LEVELING BINDER, N50
  - AREA REFLECTIVE CRACK CONTROL TREATMENT, SYSTEM A
  - 1 3/4" HMA SURFACE COURSE, MIX "D", N50

**TYPICAL CURB TAPER**

THE FOLLOWING MIXTURE REQUIREMENTS ARE APPLICABLE FOR THIS PROJECT:

MIXTURE USES(S):	SURFACE	LEVEL BINDER
PG:	PG 64-22	PG 64-22
DESIGN AIR VOIDS	4.0 @ N50	4.0 @ N50
MIXTURE COMPOSITION (GRADATION MIXTURE)	IL 9.5 OR 12.5	IL 9.5
FRICTION AGGREGATE	D	N/A
20 YEAR ESAL	0.5	0.5

**WILLET, HOFMANN & ASSOCIATES, INC.**  
 CONSULTING ENGINEERS  
 809 East Second Street Dixon, IL 61021  
 Phone 815.284.3381 Fax 815.284.3385  
 Design Firm # 184-00518  
 www.willetthofmann.com

DESIGNED - BDF	REVISED -
DRAWN - BDF	REVISED -
CHECKED - BDF	REVISED -
DATE - 07/11/2009	REVISED -

**CITY OF ROCK FALLS, ILLINOIS**  
**12th AVENUE – ROCK RIVER BRIDGE to W. 10th ST.**

**TYPICAL SECTIONS PAVEMENT DESIGN**

F.A. RTE.	SECTION	COUNTY	TOTAL SHEETS	SHEET NO.
	09-00130-00-RS	WHITESIDE	21	3
FED. ROAD DIST. NO. ILLINOIS FED. AID PROJECT				

SCALE: