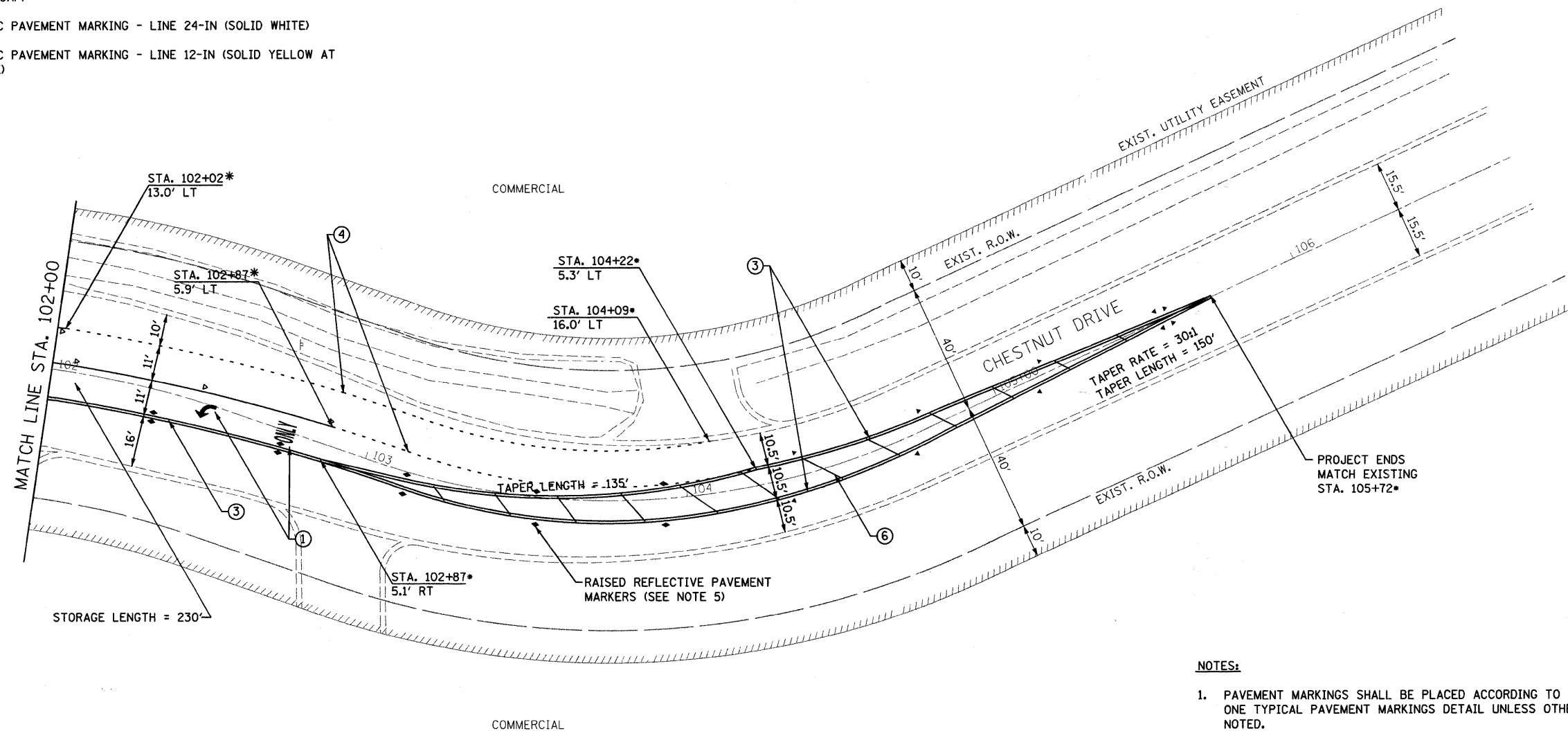


PAVEMENT MARKING LEGEND

ALL PROPOSED PAVEMENT MARKINGS SHALL BE THERMOPLASTIC, PER THE LATEST EDITION ON THE MANUAL OF UNIFORM TRAFFIC CONTROL DEVICES (MUTCD).

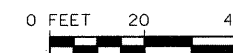
- ① THERMOPLASTIC PAVEMENT MARKING - LETTERS AND SYMBOLS (WHITE LARGE SIZE, 8')
- ② THERMOPLASTIC PAVEMENT MARKING - LINE 6-IN (SOLID WHITE)
- ③ THERMOPLASTIC PAVEMENT MARKING - LINE 4-IN (2 SOLID YELLOW SPACED 11-IN C-C)
- ④ THERMOPLASTIC PAVEMENT MARKING - LINE 6-IN (DOTTED WHITE, 2' STRIPE, 6' GAP)
- ⑤ THERMOPLASTIC PAVEMENT MARKING - LINE 24-IN (SOLID WHITE)
- ⑥ THERMOPLASTIC PAVEMENT MARKING - LINE 12-IN (SOLID YELLOW AT 45°, 20' SPACE)

* REPRESENTS STATIONING ON CHESTNUT LANE



NOTES:

- 1. PAVEMENT MARKINGS SHALL BE PLACED ACCORDING TO DISTRICT ONE TYPICAL PAVEMENT MARKINGS DETAIL UNLESS OTHERWISE NOTED.
- 2. STOP BARS SHALL BE LOCATED FOUR FEET IN ADVANCE OF CROSSWALK UNLESS OTHERWISE NOTED.
- 3. PROPOSED CROSSWALK STRIPING SHALL BE CENTERED ON THE CURB DEPRESSIONS AT CORNERS, A MINIMUM OF SIX FEET APART, OR AS DIRECTED BY THE ENGINEER.
- 4. PAVEMENT MARKINGS AT SIDE STREETS SHALL MATCH EXISTING AT PROJECT LIMITS.
- 5. RAISED REFLECTIVE PAVEMENT MARKERS SHALL BE PLACED ACCORDING TO THE IDOT DISTRICT ONE TYPICAL APPLICATIONS REFLECTIVE PAVEMENT MARKERS (SNOW PLOW RESISTANT).



FILE NAME = s:\jpl\15900-6999\6934\023\micross\sheet\pavement\plan\king_4.dgn



USER NAME = kindras	DESIGNED -	REVISED -
PLOT SCALE = 20.0000' / IN.	DRAWN -	REVISED -
PLOT DATE = 10/16/2009	CHECKED -	REVISED -
	DATE -	REVISED -

**STATE OF ILLINOIS
DEPARTMENT OF TRANSPORTATION**

**PAVEMENT MARKING PLAN
IL ROUTE 1 (DIXIE HIGHWAY) AND CHESTNUT LANE**

SCALE: AS SHOWN SHEET NO. OF SHEETS STA. TO STA.

F.A.U. RTE.	SECTION	COUNTY	TOTAL SHEETS	SHEET NO.
0332	06-00015-00-TL	WILL	31	18
CONTRACT NO. 83909				
FED. ROAD DIST. NO. ILLINOIS FED. AID PROJECT				