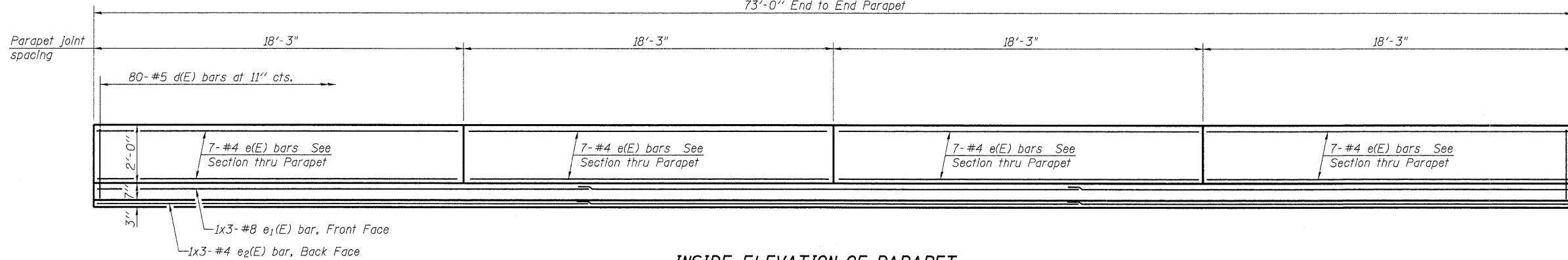


**STATE OF ILLINOIS
DEPARTMENT OF TRANSPORTATION**

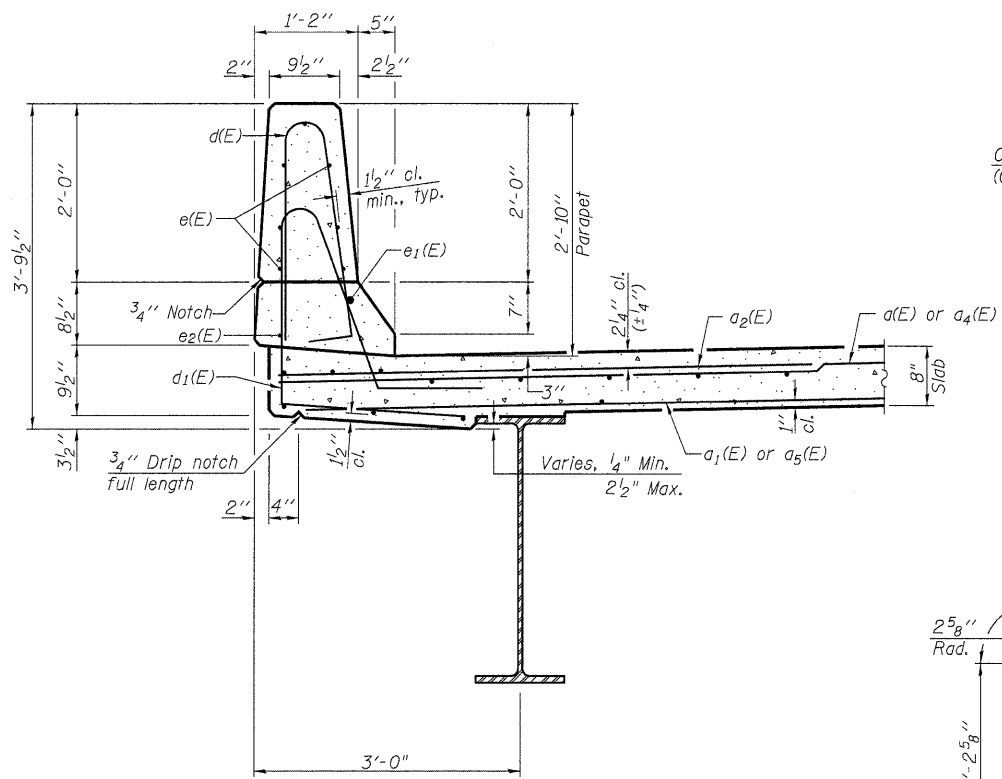
73'-0" End to End Parapet



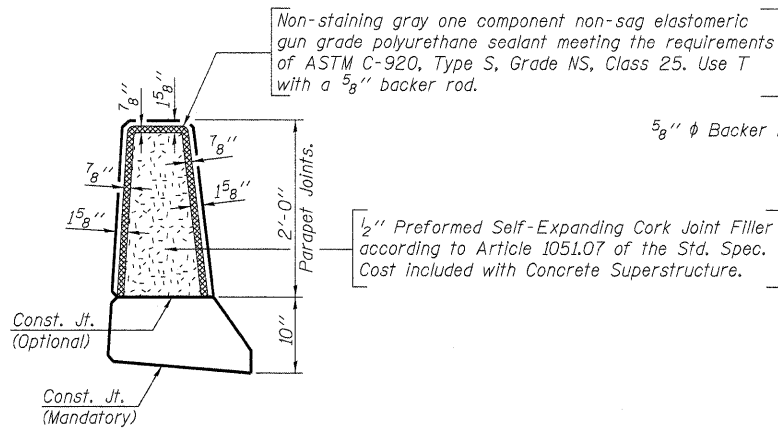
INSIDE ELEVATION OF PARAPET

MINIMUM BAR LAP

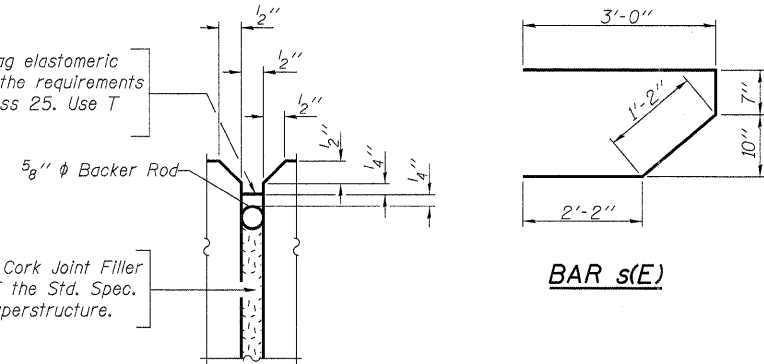
(Parapet)
#4 bar = 1'-4"
#8 bar = 3'-5"



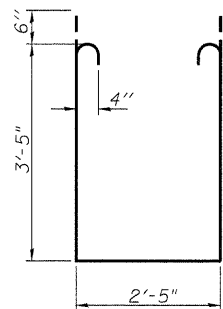
SECTION THRU PARAPET



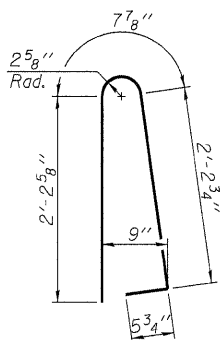
PARAPET JOINT DETAILS



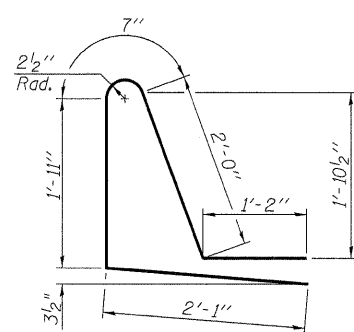
BAR s(E)



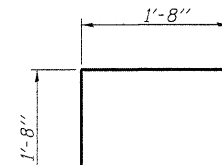
BAR s1(E)



BAR d(E)



BAR d1(E)



BAR v(E)

**SUPERSTRUCTURE
BILL OF MATERIAL**

Bar	No.	Size	Length	Shape
a(E)	145	#5	19'-4"	—
a1(E)	87	#5	19'-0"	—
a2(E)	280	#6	6'-0"	—
a3(E)	4	#5	21'-3"	—
a4(E)	145	#5	19'-2"	—
a5(E)	87	#5	18'-10"	—
a6(E)	4	#5	21'-1"	—
b(E)	168	#5	19'-6"	—
b1(E)	108	#5	25'-5"	—
d(E)	160	#5	5'-7"	⌒
d1(E)	160	#5	7'-9"	⌒
e(E)	56	#4	18'-0"	—
e1(E)	6	#8	26'-7"	—
e2(E)	6	#4	25'-2"	—
m(E)	20	#6	21'-5"	—
m1(E)	24	#6	9'-1"	—
m2(E)	8	#6	6'-0"	—
m3(E)	4	#6	2'-6"	—
m4(E)	2	#6	3'-0"	—
m5(E)	2	#6	2'-9"	—
s(E)	88	#5	6'-11"	⌒
s1(E)	72	#4	10'-3"	⌒
v(E)	80	#5	3'-4"	⌒
Reinforcement Bars, Epoxy Coated		Pound	24150	
Concrete Superstructure		Cu. Yd.	121.0	

Bars indicated thus 1 x 3-#8 etc. indicates 1 line of bars with 3 lengths per line.

**SUPERSTRUCTURE DETAILS
STRUCTURE NO. 028-0084**

 LIN ENGINEERING, LTD. Consulting Engineers Chatham, Illinois	SHEET NO. 8	F.A.P. RTE.	SECTION	COUNTY	TOTAL SHEETS	SHEET NO.	
	17 SHEETS	869	101B-1	FRANKLIN	40	23	
		CONTRACT NO. 78086					
		FED. ROAD DIST. NO.	ILLINOIS	FED. AID PROJECT			

Designed By: ESH Checked By: MTH Drawn By: TBP
Date: 2/2009 File: 028-0084.dgn