

F.A.U. RTE.	SECTION	COUNTY	TOTAL SHEETS	SHEET NO.
7706	(22,23)SEALCOAT	SANGAMON	12	1
FED. ROAD DIST. NO.	ILLINOIS	CONTRACT NO. 72D03		

STATE OF ILLINOIS
DEPARTMENT OF TRANSPORTATION
DIVISION OF HIGHWAYS

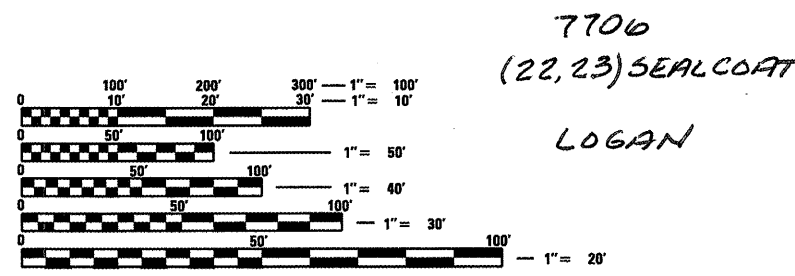
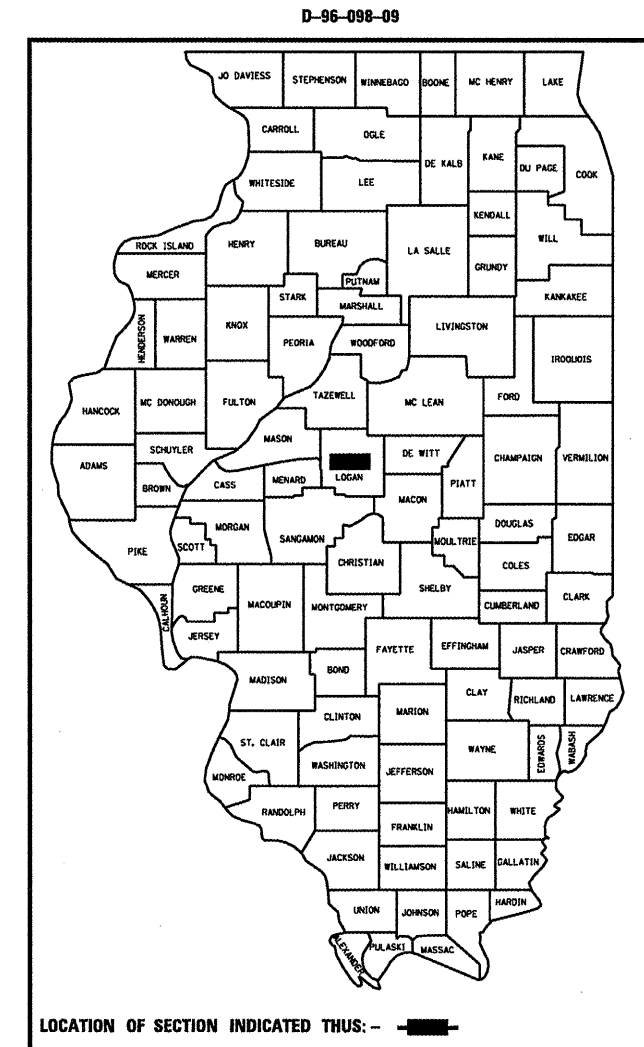
**PROPOSED
CONTRACT MAINTENANCE**

FAU 7706 (FRONTAGE RDS)
SECTION (22,23)SEALCOAT

LOGAN COUNTY

C-96-098-09

FOR INDEX OF SHEETS, SEE SHEET NO. 2

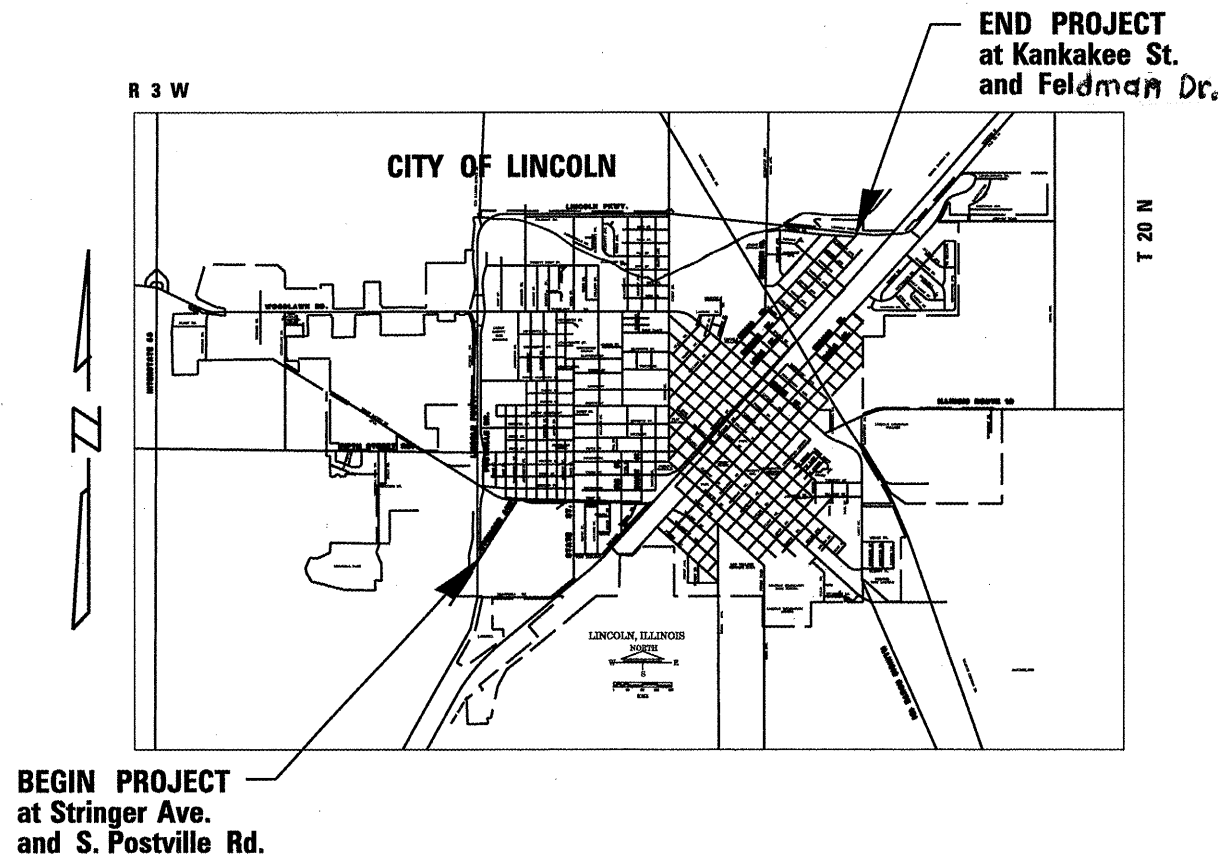


FULL SIZE PLANS HAVE BEEN PREPARED USING STANDARD ENGINEERING SCALES. REDUCED SIZED PLANS WILL NOT CONFORM TO STANDARD SCALES. IN MAKING MEASUREMENTS ON REDUCED PLANS, THE ABOVE SCALES MAY BE USED.

J.U.L.I.E.
JOINT UTILITY LOCATION INFORMATION FOR EXCAVATION
1-800-892-0123
OR 811

PLAN AND CONTRACT TECHNICIAN
TIMOTHY SHARP (217)782-7743

CONTRACT NO. 72D03



GROSS LENGTH = 17,027.00 FT. = 3.225 MILE

STATE OF ILLINOIS
DEPARTMENT OF TRANSPORTATION
DIVISION OF HIGHWAYS

SUBMITTED May 21, 2009
Regin Z. Drazek
DEPUTY DIRECTOR OF HIGHWAYS, REGION ENGINEER

June 26, 2009
Charles J. Ingersoll
ENGINEER OF DESIGN AND ENVIRONMENT

June 26, 2009
Christine M. Reed
DIRECTOR OF HIGHWAYS, CHIEF ENGINEER

**PRINTED BY THE AUTHORITY
OF THE STATE OF ILLINOIS**

INDEX

- 1 COVER
- 2 INDEX/STANDARDS/SIGNATURES
- 3 QUANTITIES
- 4 TYPICAL SECTIONS
- 5-12 PLANS

STANDARDS

- 701101-02
- 701106-02
- 701201-03
- 701301-03
- 701311-03
- 701501-05
- 701901-01
- 780001-02
- 781001-03

NOTE:

DISTRICT 6 OPERATION WILL BE RESPONSIBLE FOR
THE PAVEMENT MARKINGS ON THIS PROJECT.
CONTRACTOR SHOULD CONTACT SCOTT PADEN (217) 299-8532
TWO WEEKS PRIOR TO WORK BEING DONE.

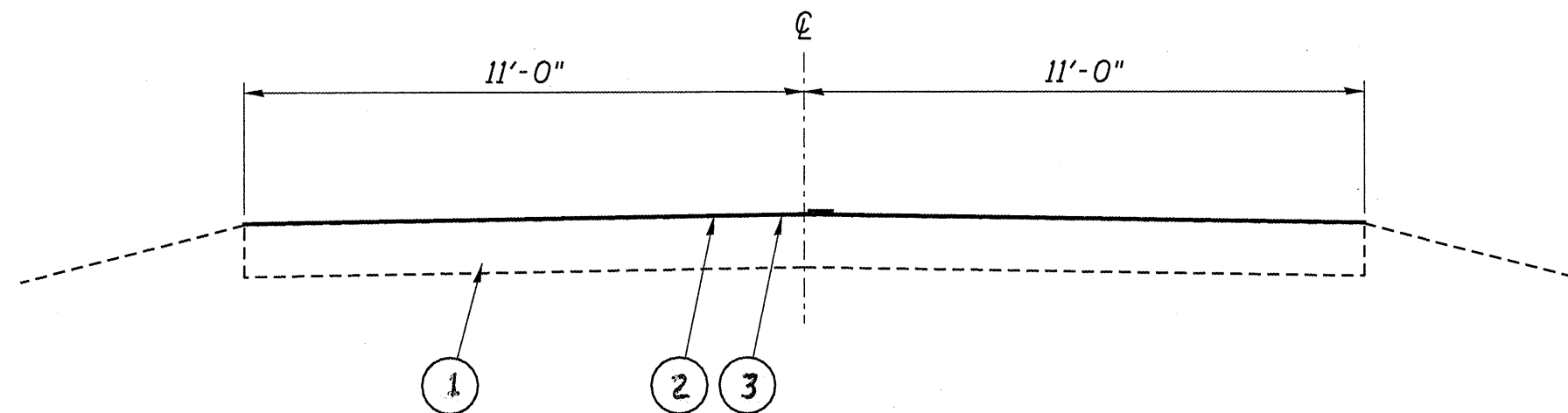
STATE OF ILLINOIS DEPARTMENT OF TRANSPORTATION DIVISION OF HIGHWAYS DISTRICT 6	
EXAMINED	May 21 20 09 <i>Sean J. Hoass</i> ENGINEER OF OPERATIONS
EXAMINED	May 21 20 09 <i>Sean J. Hoass</i> ENGINEER OF PROGRAM IMPLEMENTATION
EXAMINED	May 22 20 09 <i>ARM L</i> ENGINEER OF PROGRAM DEVELOPMENT

INDEX/STANDARDS/SIGNATURES
FAU 7706 (FRONTAGE RDS)
SECTION (22,23)SEALCOAT
LOGAN COUNTY

S U M M A R Y O F Q U A N T I T I E S

CODE NO.	ITEM	UNIT	100% STATE
			F000
			TOTAL QTY
40300400	BITUMINOUS MATERIALS (COVER AND SEAL COAT)	TON	178
40300500	COVER COAT AGGREGATE	TON	457
40300600	SEAL COAT AGGREGATE	TON	457
67100100	MOBILIZATION	L SUM	1
70100450	TRAFFIC CONTROL AND PROTECTION, STANDARD 701201	L SUM	1
70102620	TRAFFIC CONTROL AND PROTECTION, STANDARD 701501	L SUM	1
70300100	SHORT-TERM PAVEMENT MARKING	FOOT	1,704
70301000	WORK ZONE PAVEMENT MARKING REMOVAL	SQ FT	568
Z0048665	RAILROAD PROTECTIVE LIABILITY INSURANCE	L SUM	1

QUANTITIES
FAU 7706 (FRONTAGE RDS)
SECTION (22,23)SEALCOAT
LOGAN COUNTY



SEE PLAN SHEETS FOR LOCATIONS

LEGEND

- 1- EXIST. SERVICE DRIVE
- 2- EXIST. BIT. SURF. TREATMENT
- 3- PROP. BIT. SURF. TREATMENT (CL. A-2)

TYPICALS
FAU 7706 (FRONTAGE RDS)
SECTION (22,23)SEALCOAT
LOGAN COUNTY

REV.



RAILROAD
OMISSION

SOUTH POSTVILLE DRIVE
1,819 FT, 22 FT. WIDE



PLAN
FAU 7706 (FRONTAGE RDS)
SECTION (22,23)SEALCOAT
LOGAN COUNTY



SOUTH POSTVILLE DRIVE
875 FT, 22 FT WIDE

RAILROAD
OMISSION

PLAN
FAU 7706 (FRONTAGE RDS)
SECTION (22,23)SEALCOAT
LOGAN COUNTY



NORTH POSTVILLE DRIVE
3,831 FT., 22 FT WIDE



PLAN
FAU 7706 (FRONTAGE RDS)
SECTION (22,23)SEALCOAT
LOGAN COUNTY



HICKOX DRIVE
550 FT, 22 FT
WIDE

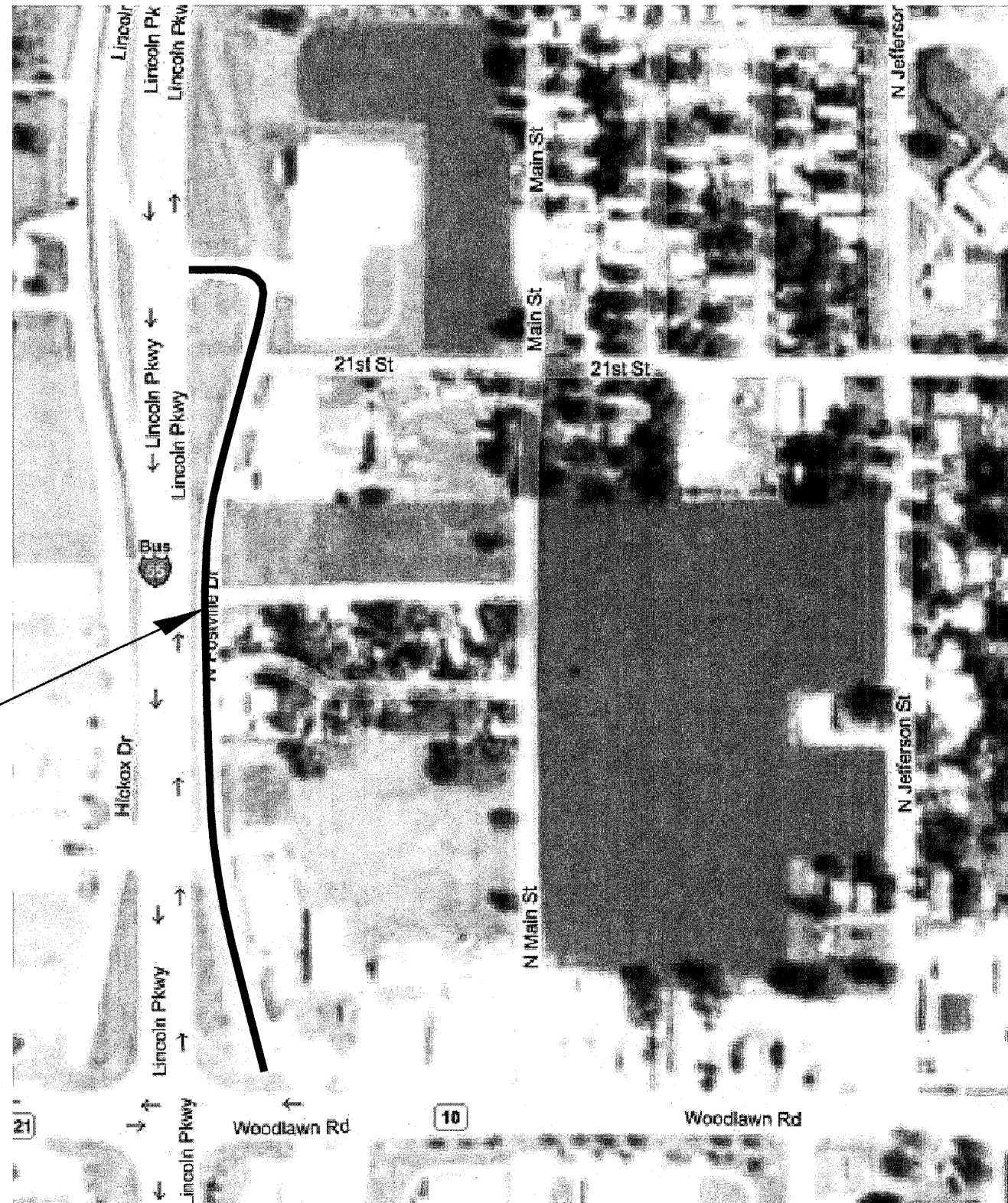
NORTH POSTVILLE DRIVE
INCLUDED IN 3,831 FT SECTION



PLAN
FAU 7706 (FRONTAGE RDS)
SECTION (22,23)SEALCOAT
LOGAN COUNTY



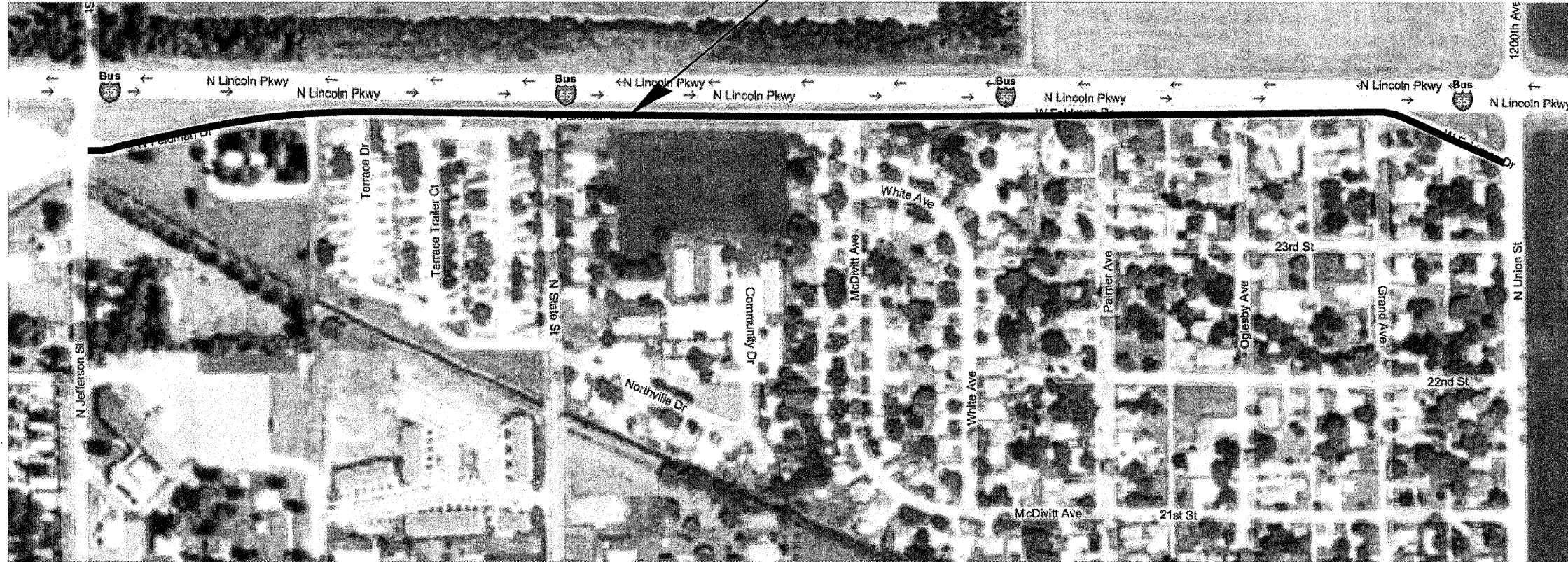
NORTH POSTVILLE DRIVE
1,520 FT, 22 FT WIDE



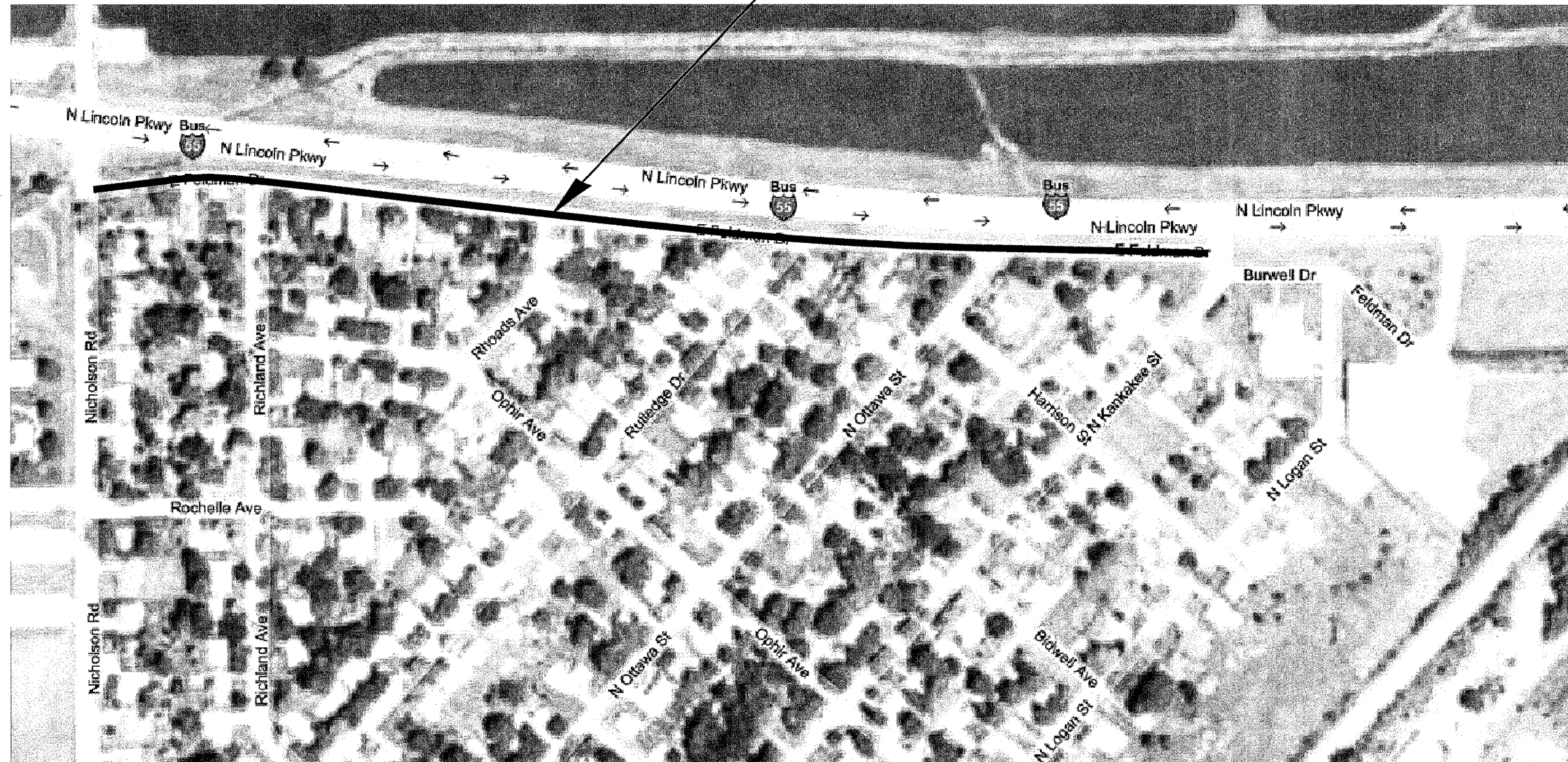
PLAN
FAU 7706 (FRONTAGE RDS)
SECTION (22,23)SEALCOAT
LOGAN COUNTY



FELDMAN ROAD
3,938 FT, 22 FT WIDE



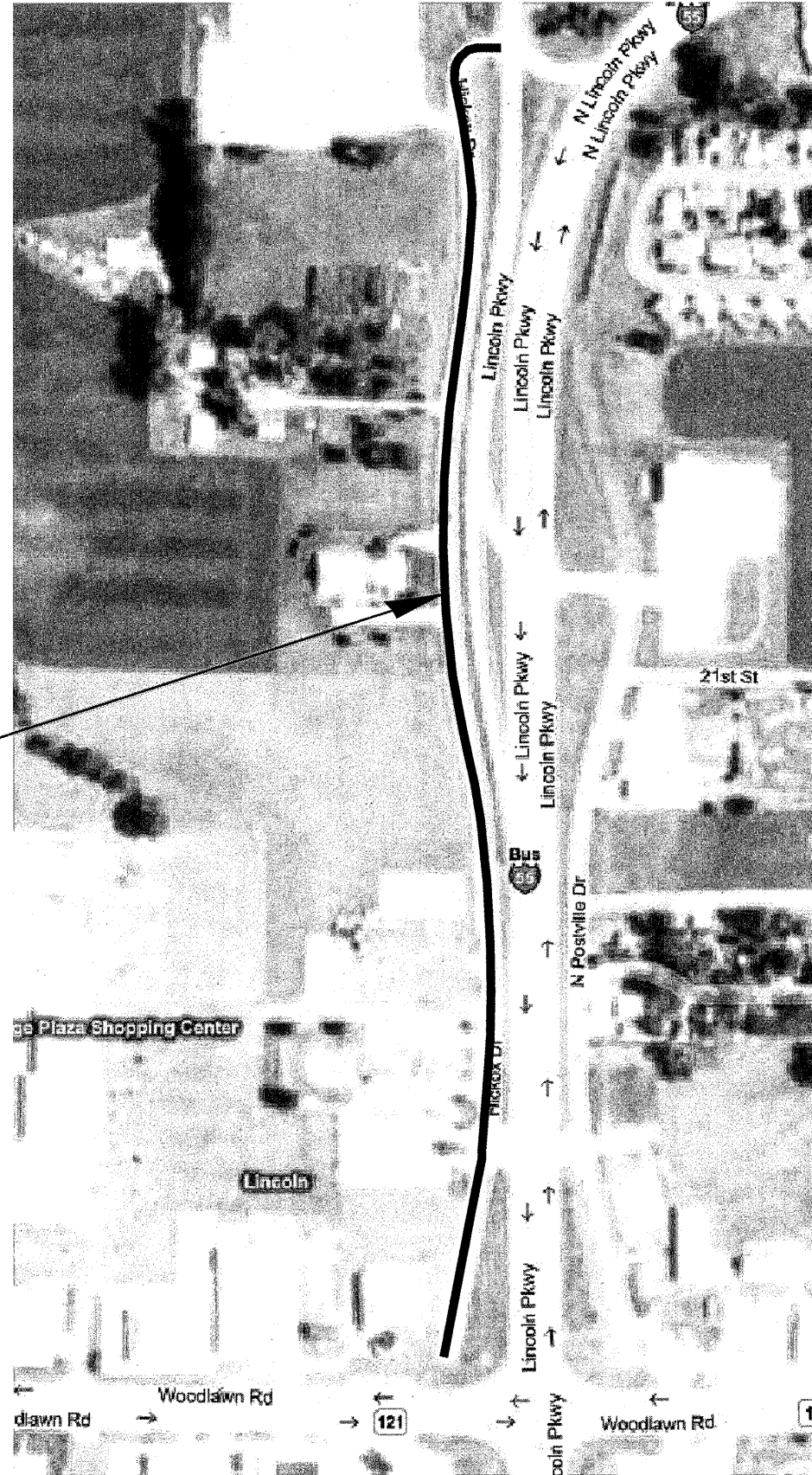
PLAN
FAU 7706 (FRONTAGE RDS)
SECTION (22,23)SEALCOAT
LOGAN COUNTY



PLAN
FAU 7706 (FRONTAGE RDS)
SECTION (22,23)SEALCOAT
LOGAN COUNTY



HICKOX DRIVE
2,119 FT, 22 FT
WIDE



PLAN
FAU 7706 (FRONTAGE RDS)
SECTION (22,23)SEALCOAT
LOGAN COUNTY