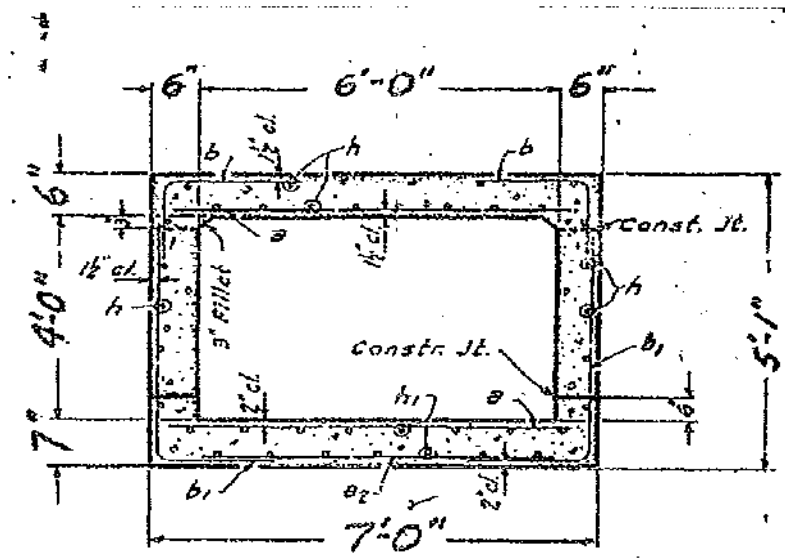
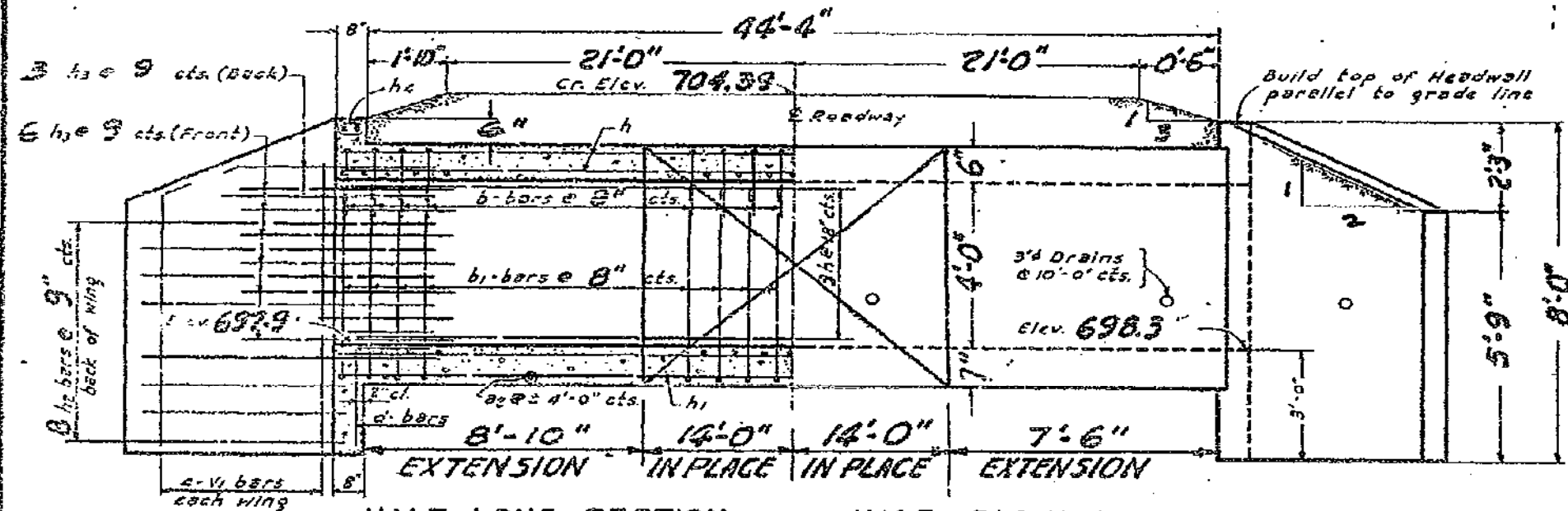


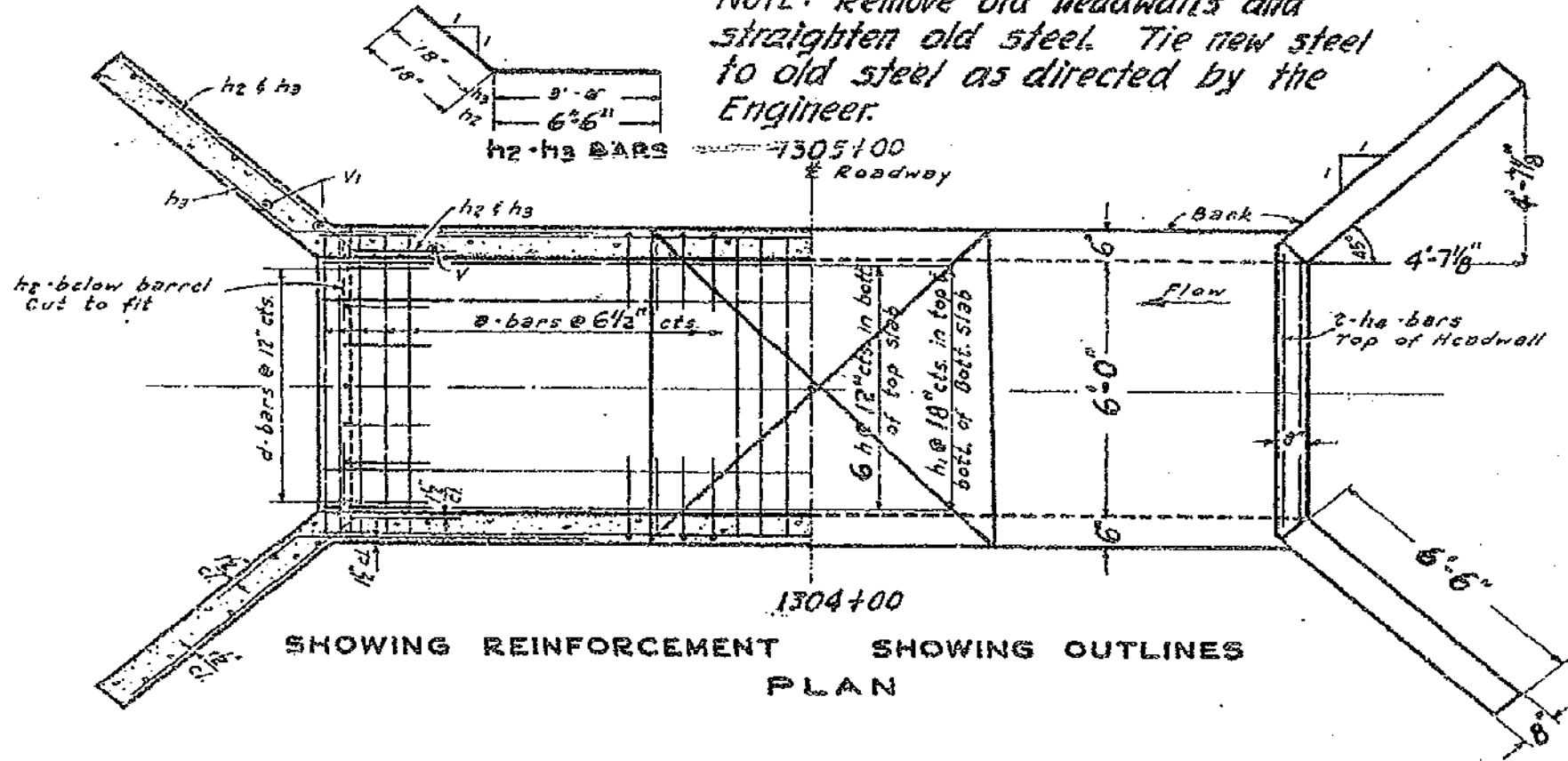
STATE OF ILLINOIS
DEPARTMENT OF PUBLIC WORKS & BUILDINGS
DIVISION OF HIGHWAYS



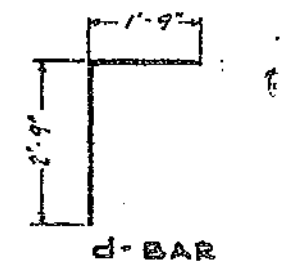
HALF LONG. SECTION HALF ELEVATION

SECTION THRU BARREL

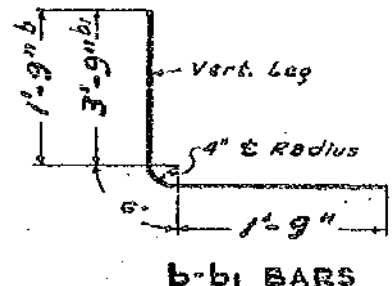
NOTE: Remove old headwalls and straighten old steel. Tie new steel to old steel as directed by the Engineer.



SHOWING REINFORCEMENT SHOWING OUTLINES
PLAN



d-BAR



b-b1 BARS

BILL OF MATERIAL

BAR	NO.	SIZE	LENGTH
s	68	#5	6'-6"
b2	6	#4	3'-6"
b	56	#4	4'-0"
b1	56	#4	6'-0"
h1L	9	#4	9'-3"
v		#4	
vi	16	#4	6'-9"
d	14	#4	4'-6"
h1R	16	#4	9'-3"
h2R	16	#4	8'-0"
h1R	9	#4	8'-0"
h2	32	#4	8'-0"
h3	36	#4	5'-0"
h4	4	#6	6'-6"
Class X Concrete			Cu. Yds. 12.9
Reinforcement S. S			Lbs. 1580

GENERAL NOTES

Class X concrete shall be used through-out.
Culvert walls and slab may be poured monolithically.
Exposed edges shall be beveled 3".
The wing walls shall be poured monolithically with barrel for a distance of six feet along the barrel.

NOTE: All bars shall be round ASTM A305-49. The size number is the number of 1/8 inches in nominal diameter.

SPECIAL CURVE EXTENSION
S.B.I. RT. 9, SEC. 46 N-2, 1W
VERMILION COUNTY
LT. & RT. STA. 1304+66

f_s = 20,000 #/sq.
f_c = 1200 #/sq.
n = 10
H 20 LOADING

STANDARD 2050

STANDARD	COMPILED	
	CHECKED	
	DRAWN	J.S. MARICCHI
SPECIAL	ASSEMBLED	R.D.C.
	CHECKED	P.L.S.

EXAMINED Sept. 16 1966
Carl E. Rummel Jr.
PASSED
APPROVED

Reinf. Revised - 11-60 - J.S.M.