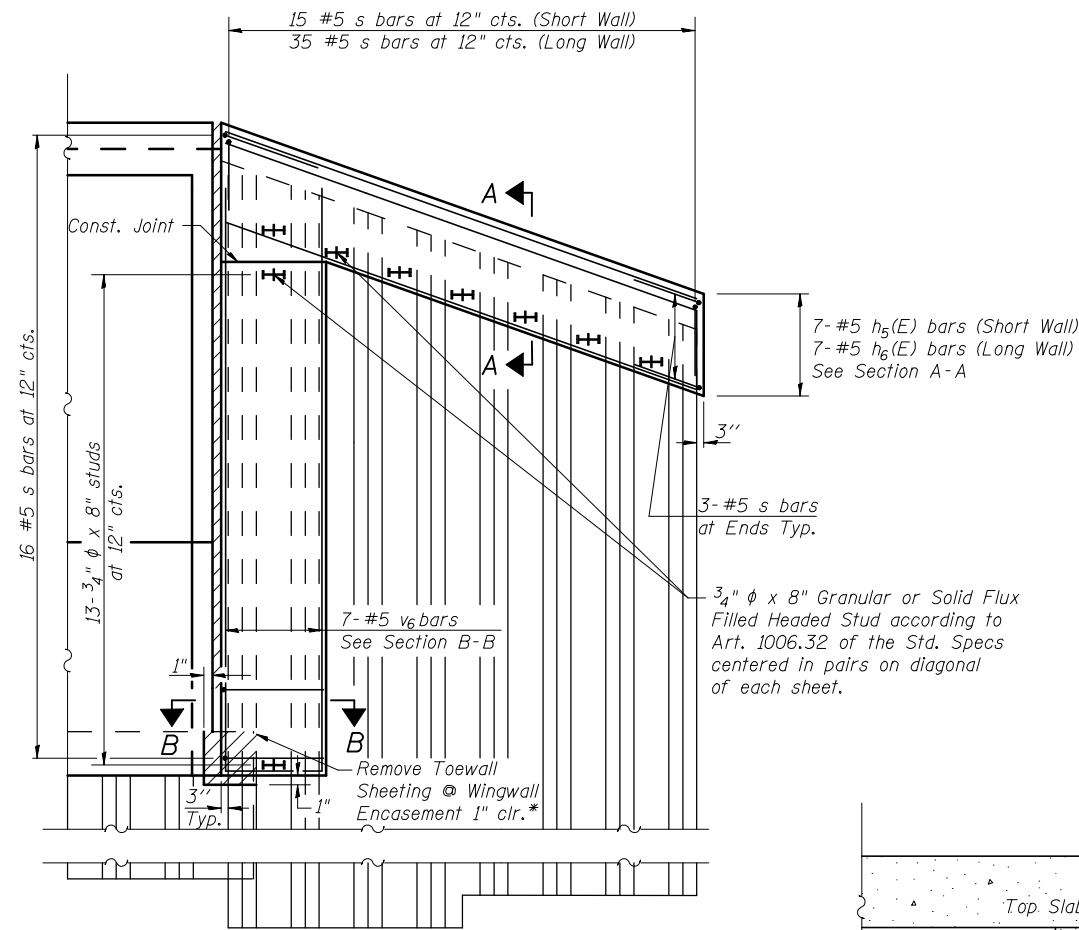
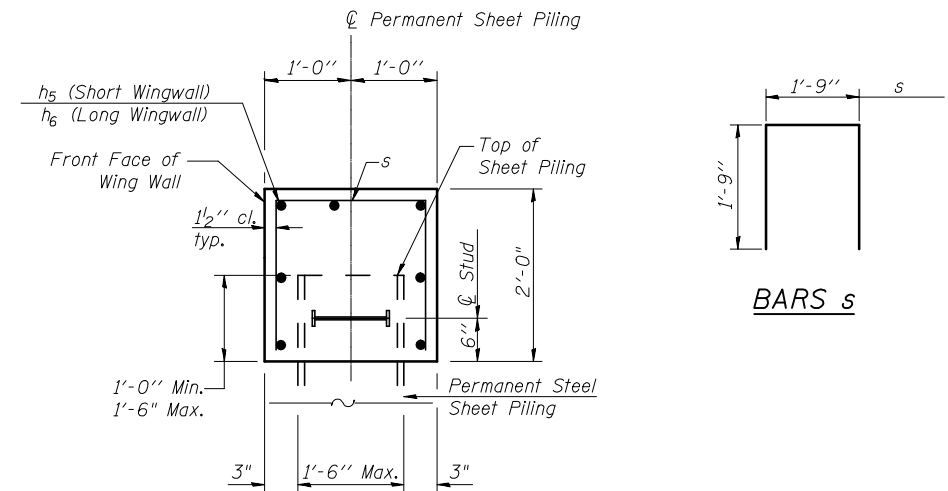


CORNER DETAIL

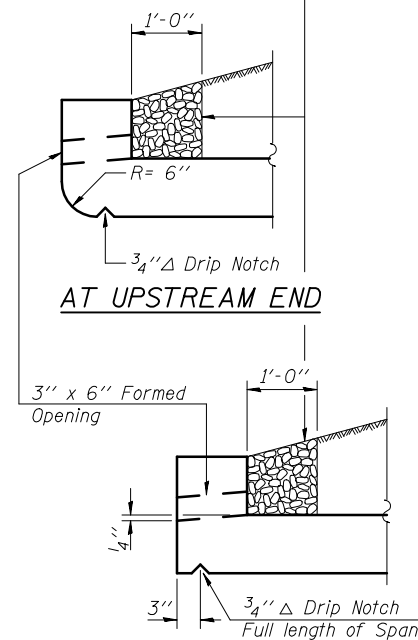


WINGWALL DETAIL



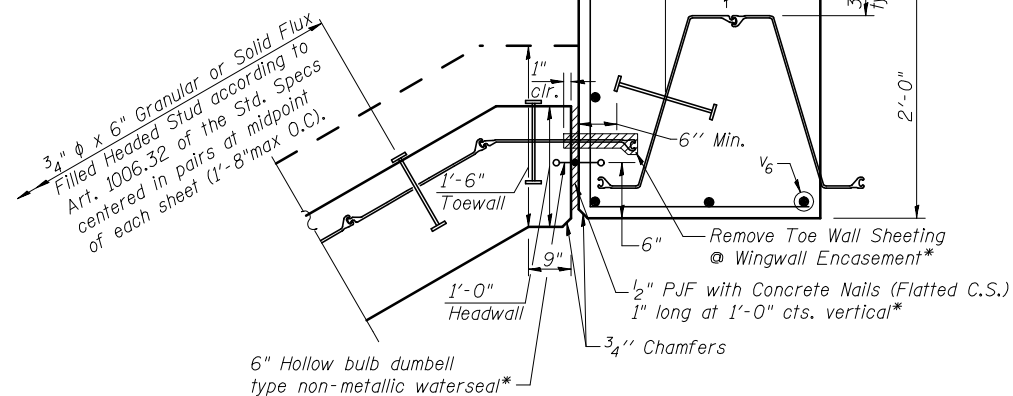
SECTION A-A

Coarse aggregate full length of both headwalls. To be placed by Grading Contractor. Cost included with Concrete Box Culverts.



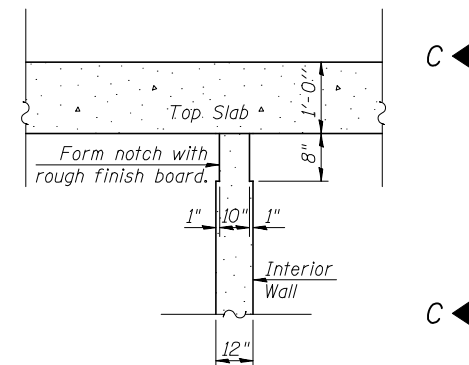
AT UPSTREAM END

AT DOWNSTREAM END



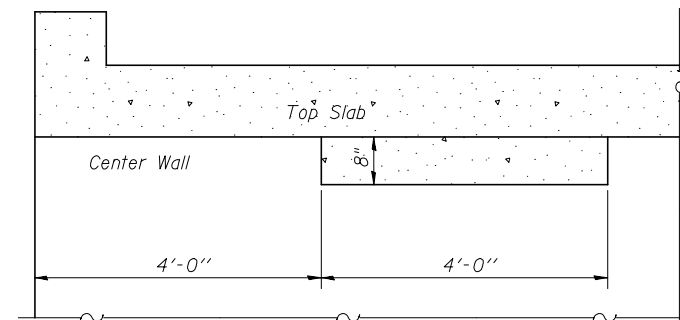
SECTION B-B

*Cost included in the cost of Permanent Steel Sheet Piling



PHOEBE NESTING SITE DETAIL

(Interior walls, downstream end only)



SECTION C-C

(Showing Phoebe Nesting Ledge)

BILL OF MATERIAL

Bar	No.	Size	Length	Shape	Bar	No.	Size	Length	Shape
a	342	#7	41'-5"	U	s	176	#5	5'-3"	U
a1	304	#8	39'-9"	U	s1	54	#4	5'-3"	U
					s2	54	#4	5'-1"	U
d	152	#4	3'-6"	U					
					v	392	#6	12'-2"	U
h	160	#6	30'-0"	U	v1	546	#6	2'-6"	U
h1	480	#5	29'-9"	U	v2	116	#5	11'-4"	U
h2	384	#7	30'-6"	U	v3	308	#5	12'-2"	U
h3	16	#6	28'-8"	U	v4	8	#5	3'-6"	U
h4	16	#7	29'-0"	U	v5	8	#5	13'-5"	U
h5	14	#5	14'-10"	U	v6	28	#5	14'-0"	U
h6	14	#5	34'-5"	U					

Concrete Box Culverts	Cu. Yd.	586
Reinforcement Bars	Pound	126,360
Permanent Steel Sheet Piling	Sq. Ft.	3,554
Stud Shear Connectors	Each	353

CULVERT DETAILS
STRUCTURE NO. 057-2041

SHEET NO. 4	F.A.P. RTE.	SECTION	COUNTY	TOTAL SHEETS	SHEET NO.
	315	121-BR-1	MCLEAN	67	32
7 SHEETS	CONTRACT NO. 70528				
	FED. ROAD DIST. NO.	ILLINOIS	FED. AID PROJECT		