

**HALF LONG SECTION**

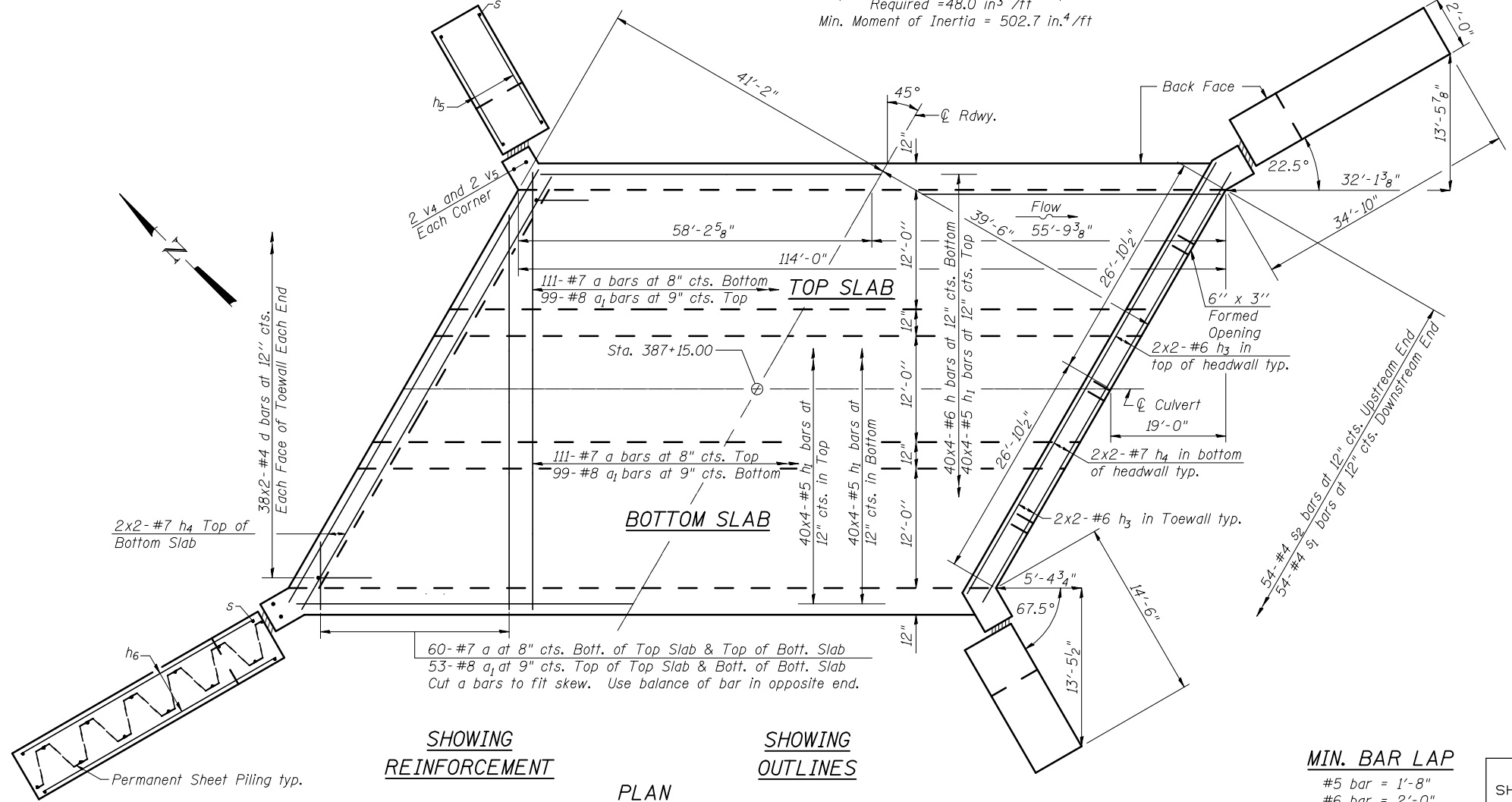
Showing bars in Inside Walls  
Elev. 667.00

**HALF ELEVATION**

Showing bars in Outside Walls  
Elev. 666.80

**HALF SECTION THRU BARREL**

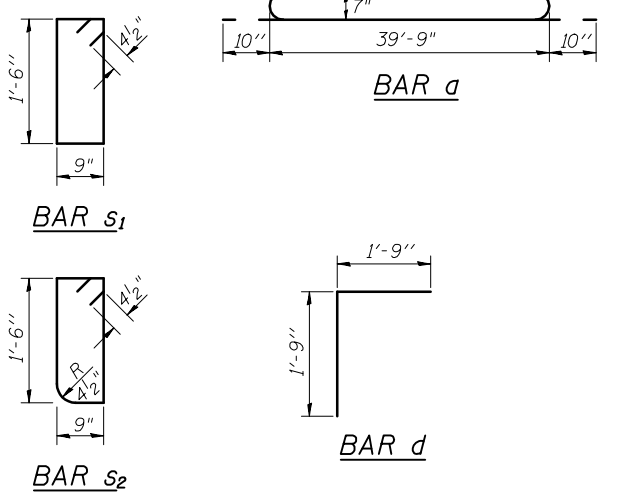
**HALF END ELEVATION**



**SHOWING REINFORCEMENT**

**SHOWING OUTLINES**

**PLAN**



Notes:  
Bars indicated thus 37x4-#7 etc. indicates 37 lines of bars with 4 lengths per line.  
Stagger lapped h bars, top & bottom.

**MIN. BAR LAP**

- #5 bar = 1'-8"
- #6 bar = 2'-0"
- #7 bar = 2'-9"

SHEET NO. 3	F.A.P. RTE.	SECTION	COUNTY	TOTAL SHEETS	SHEET NO.
	315	121-BR-1	MCLEAN	67	31
7 SHEETS	CONTRACT NO. 70528				
FED. ROAD DIST. NO.		ILLINOIS	FED. AID PROJECT		

**CULVERT DETAILS**  
**STRUCTURE NO. 057-2041**