

STATE OF ILLINOIS  
DEPARTMENT OF TRANSPORTATION

GENERAL NOTES

Fasteners shall be AASHTO M164 Type 1, mechanically galvanized bolts.  
Bolts  $\frac{3}{4}$ "  $\phi$ , holes  $\frac{5}{16}$ "  $\phi$ , unless otherwise noted.  
Calculated weight of Structural Steel = 108170 lbs. (AASHTO M 270 Gr. 50W).  
All structural steel shall be AASHTO M 270 Grade 50W.  
No field welding is permitted except as specified in the contract documents.  
Reinforcement bars shall conform to the requirements of ASTM A 706 Gr. 60 (1L Modified). See Special Provisions.

Reinforcement bars designated (E) shall be epoxy coated.  
Bearing seat surfaces shall be constructed or adjusted to their designated elevations within a tolerance of  $\frac{1}{8}$  inch (0.01 ft.). Adjustment shall be made either by grinding the surface or by shimming the bearings.  
Structural steel shall only be painted for a distance equal to the depth of embedment into the concrete cap plus 3 inches. Those areas shall be primed in the shop with a Department approved zinc rich primer. No field painting shall be required. All structural steel shall be cleaned as specified in the Special Provision for "Surface Preparation and Painting Requirements for Weathering Steel".

Slipforming of parapets will not be allowed.  
Sloped wall shall be reinforced with welded wire fabric, 6"x 6" - W4.0 x W4.0, weighing 58 lbs. per 100 sq. ft.

The embankment configuration shown shall be the minimum that must be placed and compacted prior to construction of the abutments.

The Contractor shall drive two test piles, one each at West Abutment and Pier 2 to 110% of the nominal required bearing specified in respective locations before ordering the remainder of piles.

The Contractor shall submit Structural Assessment Report(s) as required for the Contractor's Means and Methods of Construction. See Special Provisions.

Current Ratings of File for Existing Structure

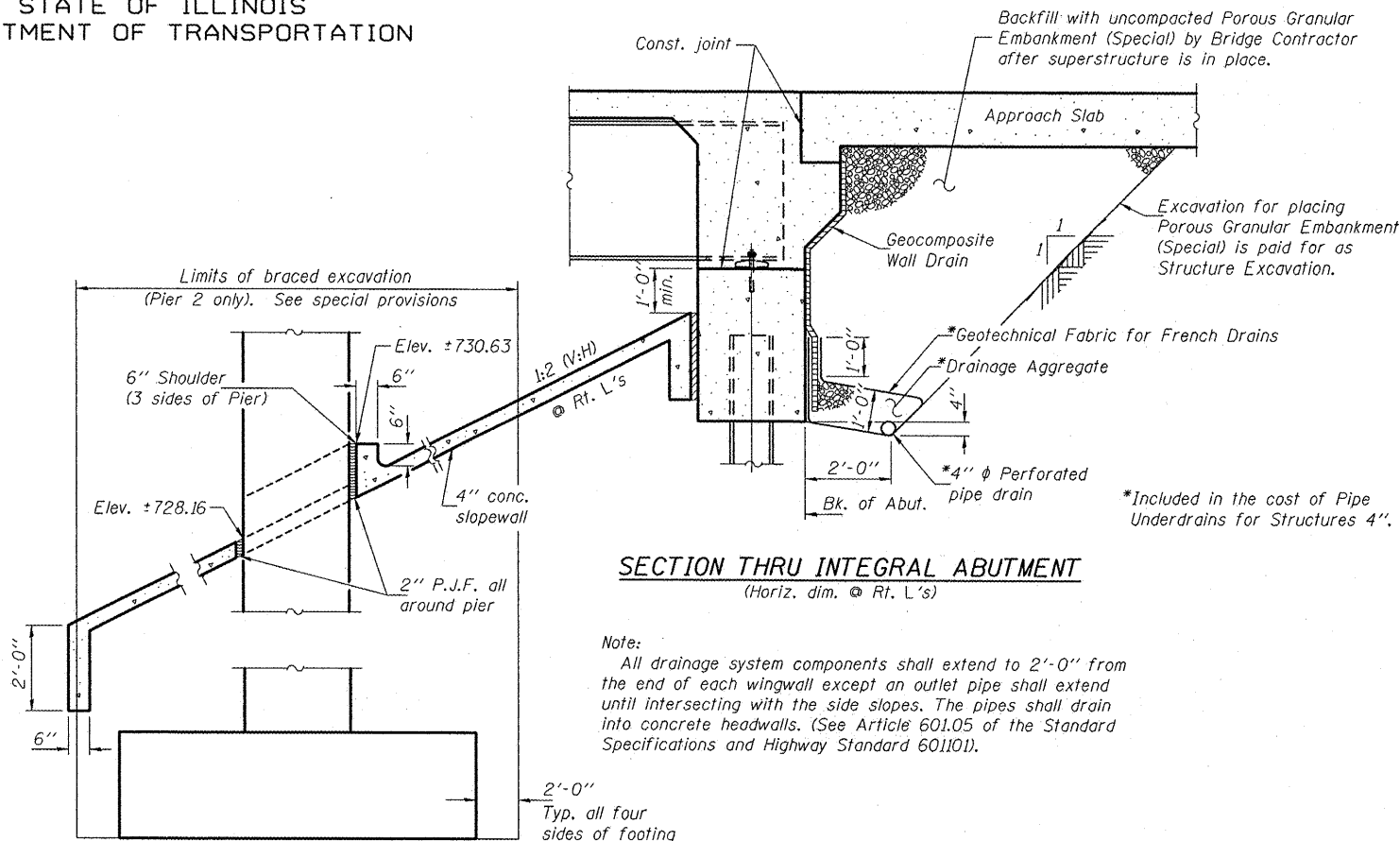
Inventory: HS 17.3

Operating: HS 28.9

Live Load Restrictions: No

Inventory and Operating Ratings and Live Load Restrictions are provide for information only. Inventory and Operating Ratings are based on HS loading and configuration. Live Load Restrictions are based on Illinois legal loads and configurations. The Ratings and Live Load Restrictions are not necessarily representative of capacities to support the Contractor's equipment.

The Contractor is advised that the existing structure contains members (including piers) that are in a deteriorated condition with reduced load carrying capacity. It is the Contractor's responsibility to account for the condition of the existing structure when developing construction procedures for the complete or partial removal, or replacement of the structure. An Existing Structure Information Package is available upon request as noted in the special provisions.



SECTION THRU INTEGRAL ABUTMENT  
(Horiz. dim. @ Rt. L's)

Note:  
All drainage system components shall extend to 2'-0" from the end of each wingwall except an outlet pipe shall extend until intersecting with the side slopes. The pipes shall drain into concrete headwalls. (See Article 601.05 of the Standard Specifications and Highway Standard 601101).

TOTAL BILL OF MATERIAL

ITEM	UNIT	SUPER	SUB	TOTAL
Porous Granular Embankment (Special)	Cu. Yd.	92.4		92.4
Removal of Existing Structures	Each	1		1
Structure Excavation	Cu. Yd.		250	250
Concrete Structures	Cu. Yd.		258.2	258.2
Concrete Superstructure	Cu. Yd.		319.4	319.4
Bridge Deck Grooving	Sq. Yd.	697		697
Concrete Encasement	Cu. Yd.		4.2	4.2
Protective Coat	Sq. Yd.	967		967
Furnishing and Erecting Structural Steel	L. Sum	1		1
Stud Shear Connectors	Each	3654		3654
Reinforcement Bars, Epoxy Coated	Pound	76250	33600	109850
Bar Splicers	Each	64		64
Sloped wall 4"	Sq. Yd.		482	482
Furnishing Steel Piles HPI2x53	Foot		2348	2348
Driving Piles	Foot		2348	2348
Test Pile Steel HPI2x53	Each		2	2
Name Plates	Each	1		1
Elastomeric Bearing Assembly, Type I	Each		12	12
Anchor Bolt 1" $\phi$	Each		24	24
Anchor Bolt 1 1/2" $\phi$	Each		24	24
Braced Excavation	Cu. Yd.		112	112
Geocomposite Wall Drain	Sq. Yd.		56.8	56.8
Pipe Underdrains for Structures 4"	Foot		137	137
** Diamond Grinding (Bridge Section)	Sq. Yd.	734		734
Reinforced Soil Slope System	Sq. Ft.		5660	5660
Asbestos Bearing Pad Removal	Each		88	88
Sloped wall Removal	Sq. Yd.		542	542

\*\*Includes bridge approach slab and connector pavement.

GENERAL DATA  
STRUCTURE NO. 074-0086

SHEET NO. 2	F.A.S. RTE.	SECTION	COUNTY	TOTAL SHEETS	SHEET NO.
25 SHEETS	1517	12VBR-1	PIATT	168	87
CONTRACT NO. 70388					
FED. ROAD DIST. NO. - ILLINOIS FED. AID PROJECT					

Revised 12/17/2009, DPN