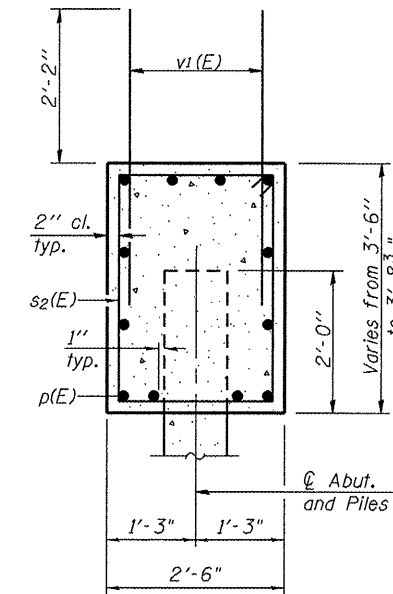
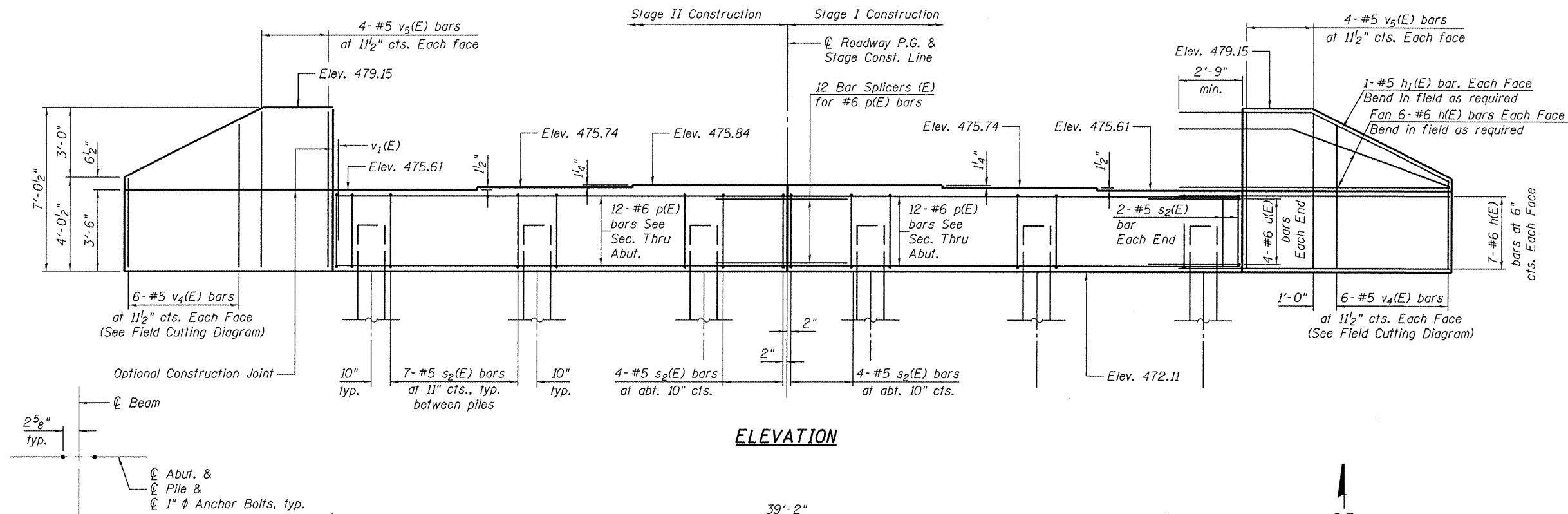
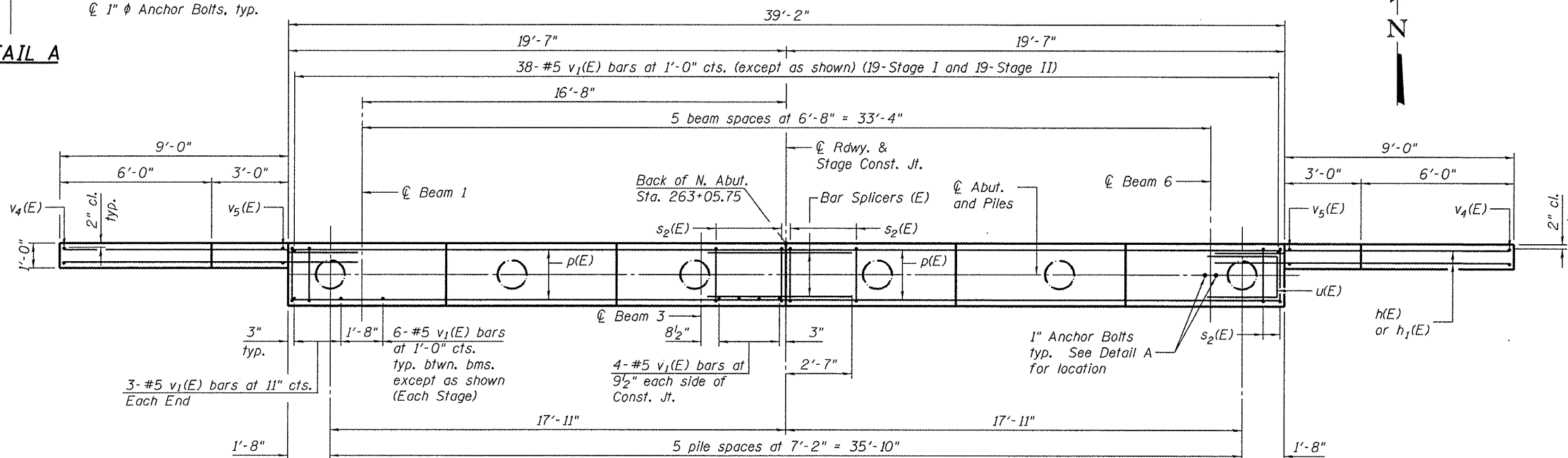


STATE OF ILLINOIS  
DEPARTMENT OF TRANSPORTATION

Note: Pour steps monolithically with cap.

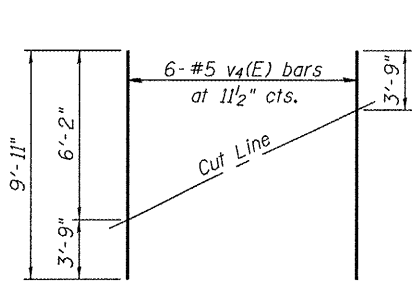


**DETAIL A**



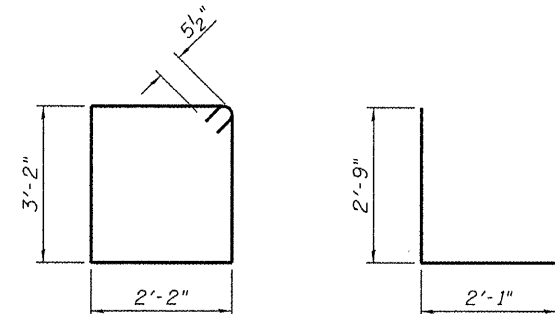
**PILE DATA**

Type: Metal Shell - 14 in. dia. x 0.25 in. walls  
Nominal Required Bearing: 368 kips  
Factored Resistance Available: 184 kips  
Est. Length: 63 ft.  
No. Production Piles: 5  
No. Test Piles: 1



**FIELD CUTTING DIAGRAM**

Order v<sub>4</sub>(E) full length. Cut as shown and use remainder of bars in opposite face.



**BILL OF MATERIAL**

Bar	No.	Size	Length	Shape
h(E)	52	#6	12'-0"	—
h <sub>1</sub> (E)	4	#5	12'-4"	—
p(E)	24	#6	19'-3"	—
s <sub>2</sub> (E)	40	#5	11'-7"	□
u(E)	8	#6	7'-7"	□
v <sub>1</sub> (E)	76	#5	4'-4"	—
v <sub>4</sub> (E)	12	#5	9'-11"	—
v <sub>5</sub> (E)	16	#5	6'-8"	—
Structure Excavation		Cu. Yd.	65	
Concrete Structures		Cu. Yd.	17.2	
Reinforcement Bars, Epoxy Coated		Pound	2840	
Furnishing Metal Shell Piles 14"x 0.250"		Foot	315	
Driving Piles		Foot	315	
Test Pile Metal Shells		Each	1	

For details of Bar Splicers, see sheet 21 of 25.  
For details of piles, see sheet 20 of 25.

**NORTH ABUTMENT  
STRUCTURE NO. 102-0068**

<b>EFK Moen, LLC</b> Civil Engineering Design		331 Salem Place Suite 225 Fairview Heights, IL 62208		Phone 618-206-4250 Fax 618-206-4253	
F.A.S. RTE.	SECTION	COUNTY	TOTAL SHEETS	SHEET NO.	
2370	29BR-1	WOODFORD	76	40	
FED. ROAD DIST. NO.			ILLINOIS FED. AID PROJECT		
			CONTRACT NO. 68466		

SHEET NO. 18  
26 SHEETS

DESIGNED CTW
CHECKED SEC
DRAWN DP
CHECKED SEC

AI-0

10-1-08