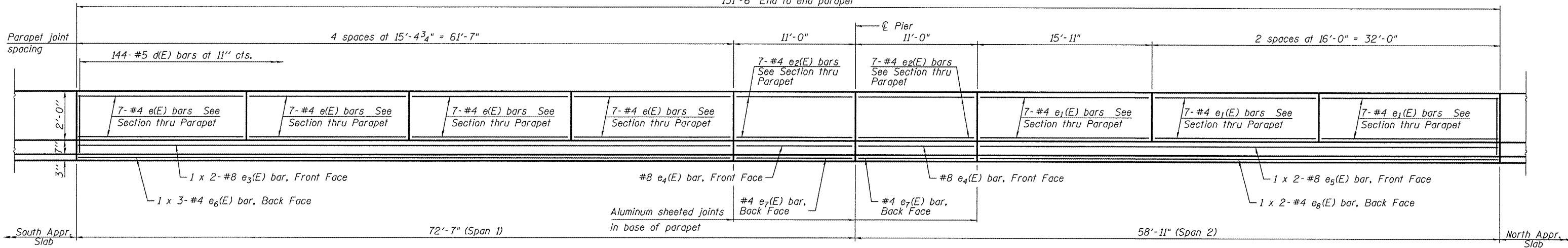


STATE OF ILLINOIS
DEPARTMENT OF TRANSPORTATION

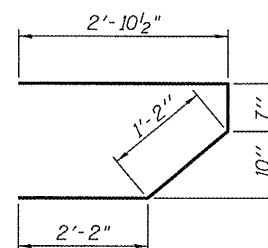
131'-6" End to end parapet



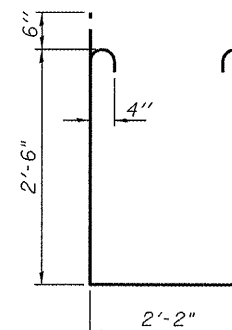
INSIDE ELEVATION OF PARAPET

MINIMUM BAR LAP

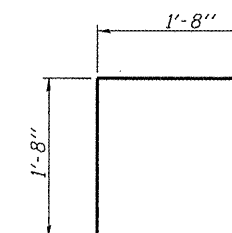
(Parapet)
#4 bar = 1'-4"
#8 bar = 3'-5"



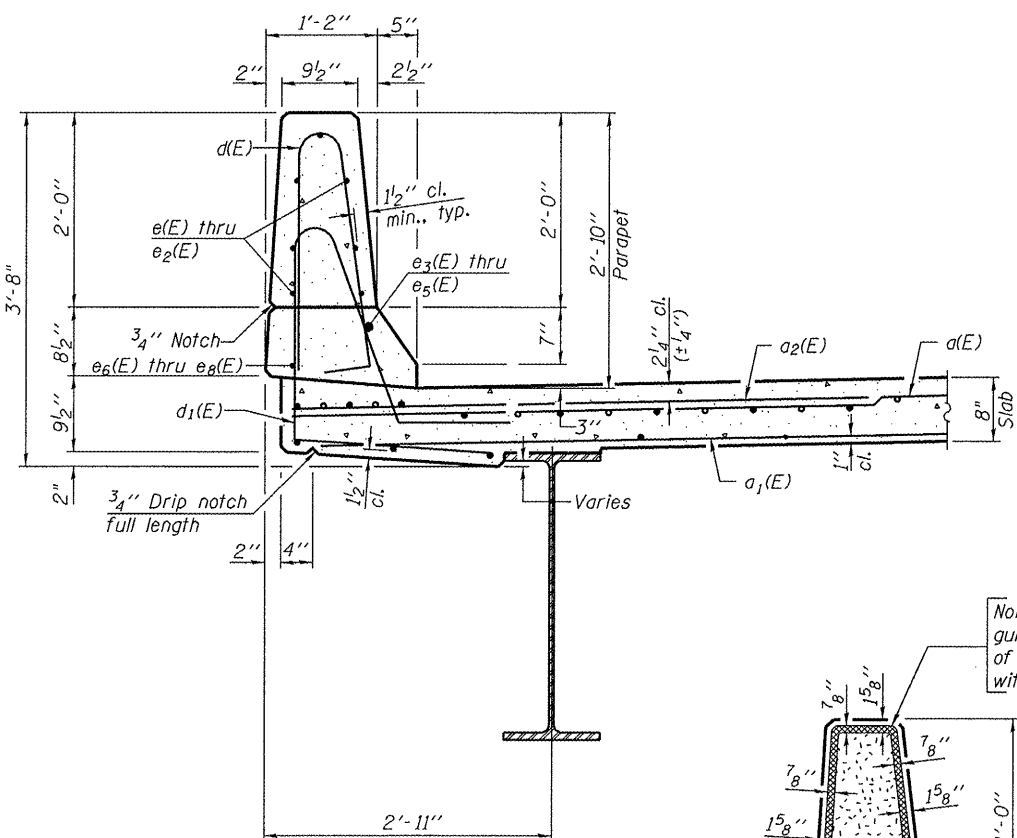
BAR s(E)



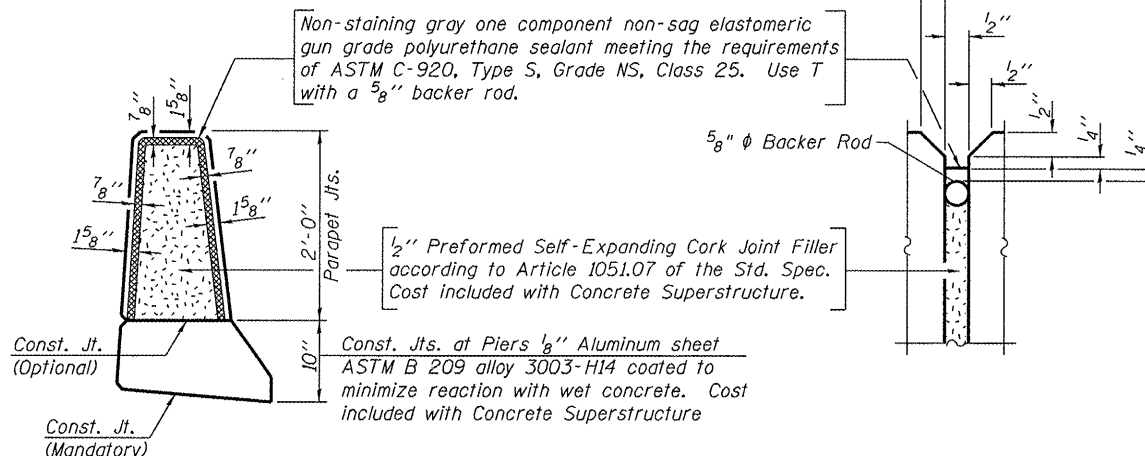
BAR s1(E)



BAR v(E)



SECTION THRU PARAPET



PARAPET JOINT DETAILS

SUPERSTRUCTURE BILL OF MATERIAL

Bar	No.	Size	Length	Shape
a(E)	486	#5	19'-2"	—
a1(E)	316	#5	18'-10"	—
a2(E)	486	#6	6'-0"	—
b(E)	210	#5	28'-0"	—
b1(E)	40	#6	45'-0"	—
b2(E)	228	#5	23'-9"	—
d(E)	288	#5	5'-7"	⌋
d1(E)	288	#5	7'-9"	⌋
e(E)	56	#4	15'-2"	—
e1(E)	42	#4	15'-8"	—
e2(E)	28	#4	10'-9"	—
e3(E)	4	#8	32'-5"	—
e4(E)	4	#8	10'-9"	—
e5(E)	4	#8	25'-7"	—
e6(E)	6	#4	21'-4"	—
e7(E)	4	#4	10'-9"	—
e8(E)	4	#4	24'-6"	—
m(E)	8	#6	19'-3"	—
m1(E)	12	#6	19'-3"	—
m2(E)	24	#6	8'-3"	—
m3(E)	8	#6	6'-4"	—
m4(E)	4	#6	2'-6"	—
m5(E)	4	#6	2'-11"	—
s(E)	88	#5	6'-9"	⌋
s1(E)	80	#4	8'-4"	⌋
v(E)	80	#5	3'-4"	⌋
Reinforcement Bars, Epoxy Coated		Pound	43,250	
Concrete Superstructure		Cu. Yds.	185.2	

Bars indicated thus 1 x 2-#5 etc. indicates 1 line of bars with 2 lengths per line.

SUPERSTRUCTURE DETAILS
STRUCTURE NO. 102-0068

DESIGNED CTW
CHECKED CDL
DRAWN DP
CHECKED CTW/CDL

S-I-D 10-1-08

SHEET NO. 10 26 SHEETS	EFK Moen, LLC Civil Engineering Design		331 Salem Place Suite 225 Fairview Heights, IL 62208		Phone 618-206-4250 Fax 618-206-4253	
	F.A.S. RTE. 2370	SECTION 29BR-1	COUNTY WOODFORD	TOTAL SHEETS 76	SHEET NO. 32	
FED. ROAD DIST. NO.		ILLINOIS	FED. AID PROJECT			
			CONTRACT NO. 68466			