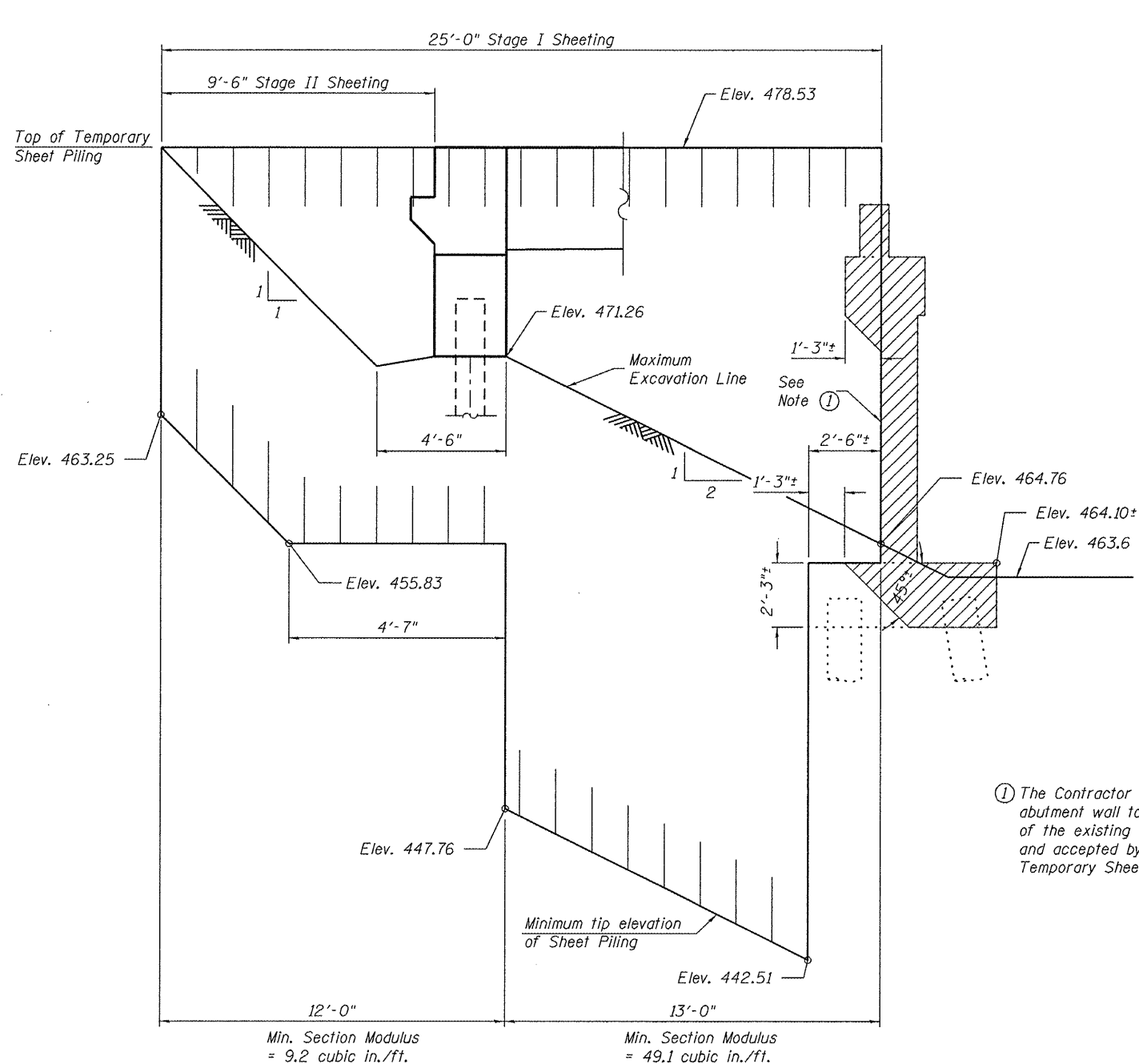
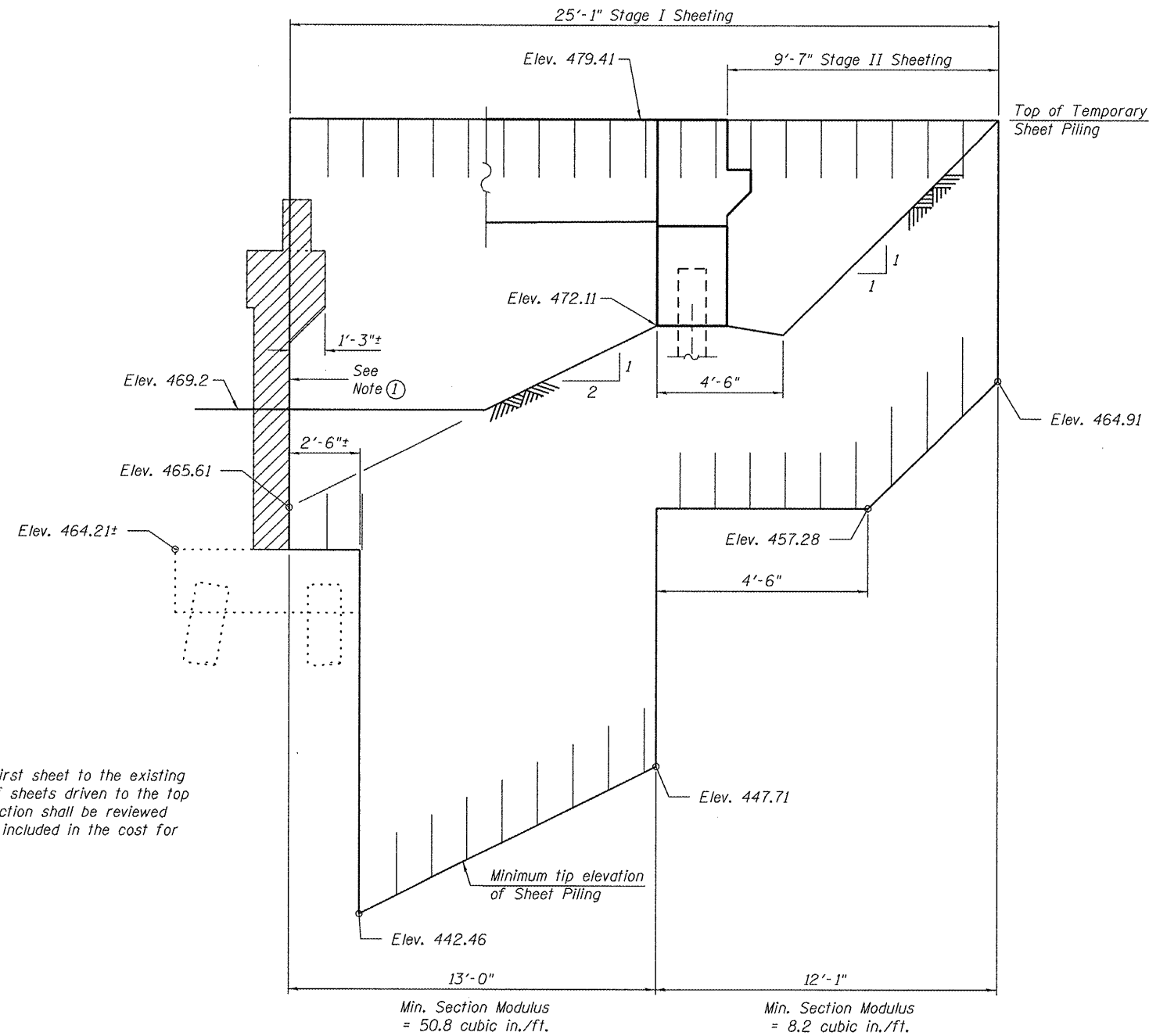


STATE OF ILLINOIS
DEPARTMENT OF TRANSPORTATION



SOUTH ABUTMENT



NORTH ABUTMENT

① The Contractor shall connect the first sheet to the existing abutment wall to ensure stability of sheets driven to the top of the existing footing. This connection shall be reviewed and accepted by the Engineer and included in the cost for Temporary Sheet Piling.

Note:
If the Contractor chooses to alter the temporary cantilevered sheet piling design requirements shown on the plans, a design submittal including plan details and calculations will be required for review and acceptance by the Engineer.

TEMPORARY SHEET PILING AND EXCAVATION/REMOVALS AT ABUTMENTS

**STAGE CONSTRUCTION DETAILS (2 OF 2)
STRUCTURE NO. 102-0068**

DESIGNED	SEC
CHECKED	CDL
DRAWN	DP
CHECKED	CTW

SHEET NO. 4 26 SHEETS		EFK•Moen, LLC Civil Engineering Design		331 Salem Place Suite 225 Fairview Heights, IL 62208		Phone 618-206-4250 Fax 618-206-4253	
		F.A.S. RTE. 2370	SECTION 29BR-1	COUNTY WOODFORD	TOTAL SHEETS 76	SHEET NO. 26	CONTRACT NO. 68466
		FED. ROAD DIST. NO.	ILLINOIS	FED. AID PROJECT			