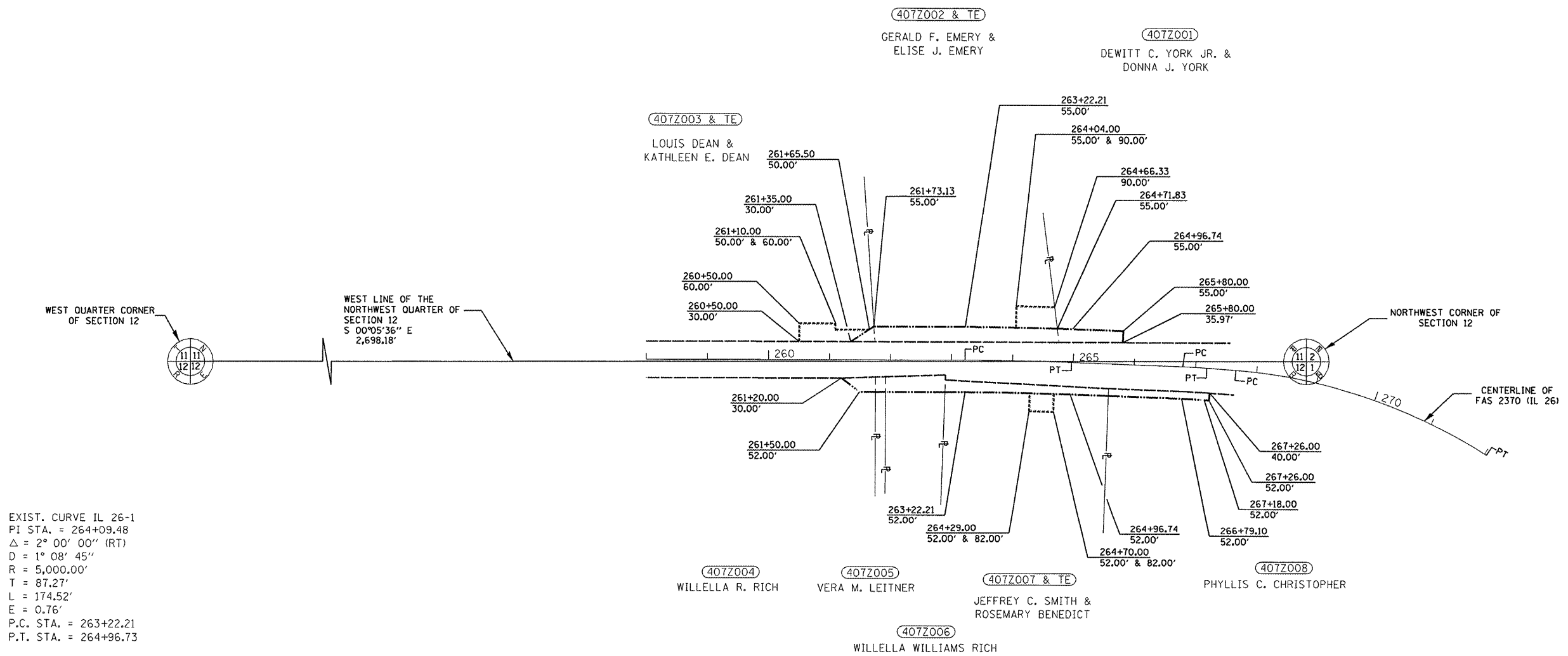


**LEGEND**

EXISTING RIGHT OF WAY LINE	-----
PROPOSED RIGHT OF WAY LINE	-----
PROPOSED TEMPORARY EASEMENT LINE	-----

T 27 N, R 4 W 3RD PM



EXIST. CURVE IL 26-1  
 PI STA. = 264+09.48  
 $\Delta = 2^\circ 00' 00''$  (RT)  
 $D = 1^\circ 08' 45''$   
 $R = 5,000.00'$   
 $T = 87.27'$   
 $L = 174.52'$   
 $E = 0.76'$   
 P.C. STA. = 263+22.21  
 P.T. STA. = 264+96.73

EXIST. CURVE IL 26-2  
 PI STA. = 266+98.54  
 $\Delta = 2^\circ 13' 43''$  (RT)  
 $D = 5^\circ 43' 46''$   
 $R = 1,000.00'$   
 $T = 19.45'$   
 $L = 38.90'$   
 $E = 0.19'$   
 P.C. STA. = 266+79.09  
 P.T. STA. = 267+17.99

EXIST. CURVE IL 26-3  
 PI STA. = 269+89.17  
 $\Delta = 28^\circ 18' 49''$  (RT)  
 $D = 6^\circ 28' 27''$   
 $R = 885.00'$   
 $T = 223.23'$   
 $L = 437.34'$   
 $E = 27.72'$   
 P.C. STA. = 267+65.94  
 P.T. STA. = 272+03.28

For Old R.O.W. see File 26 Sheet 4

Platfile 200 (26) (4A)

(IL 26) Catalog No.032469-00

FILE NAME =	USER NAME = JD	DESIGNED - ---	REVISED - ---	<b>STATE OF ILLINOIS DEPARTMENT OF TRANSPORTATION</b>	<b>RIGHT-OF-WAY PLAN</b>	F.A.S. RTE.	SECTION	COUNTY	TOTAL SHEETS	SHEET NO.	
#FILE#	PLOT SCALE = \$SCALE\$	DRAWN - ---	REVISED - ---			2370	29BR-1	WOODFORD	76	19	
	PLOT DATE = 10/1/2009	CHECKED - ---	REVISED - ---			CONTRACT NO. 68466					
		DATE = 10/1/09	REVISED - ---			FED. ROAD DIST. NO. ILLINOIS FED. AID PROJECT					

SCALE: 1" = 100' SHEET NO. 1 OF 1 SHEET STA. 260+50.00 TO STA. 267+20.00