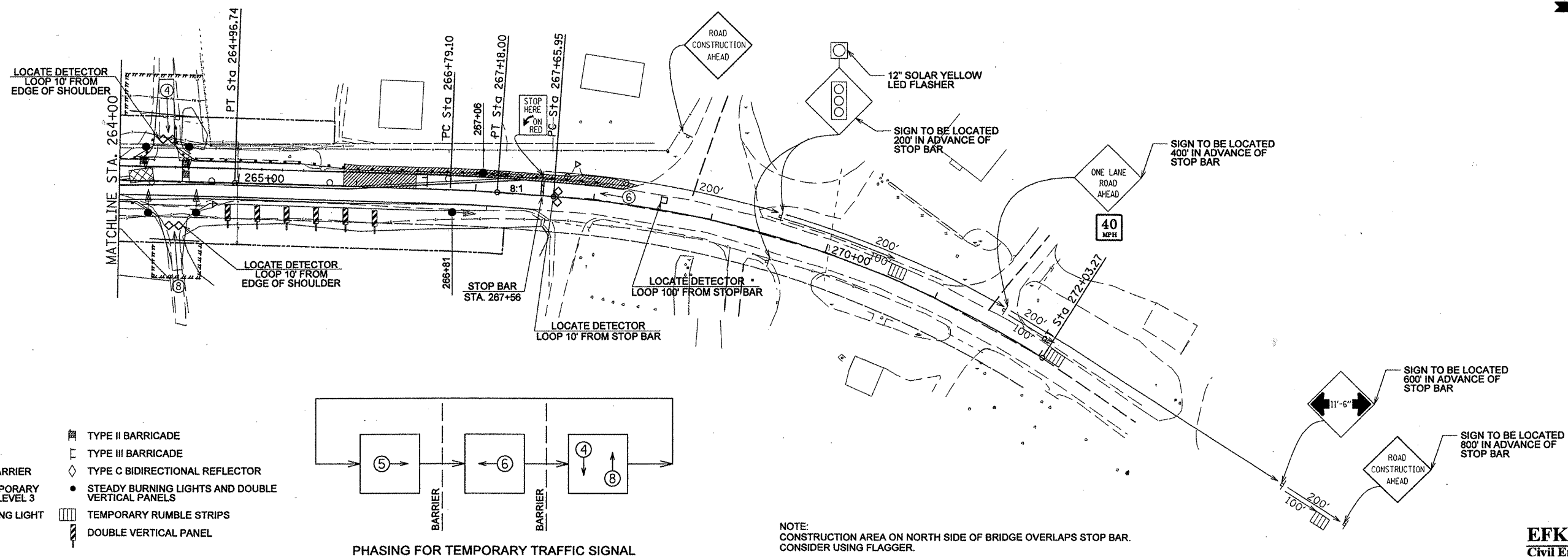
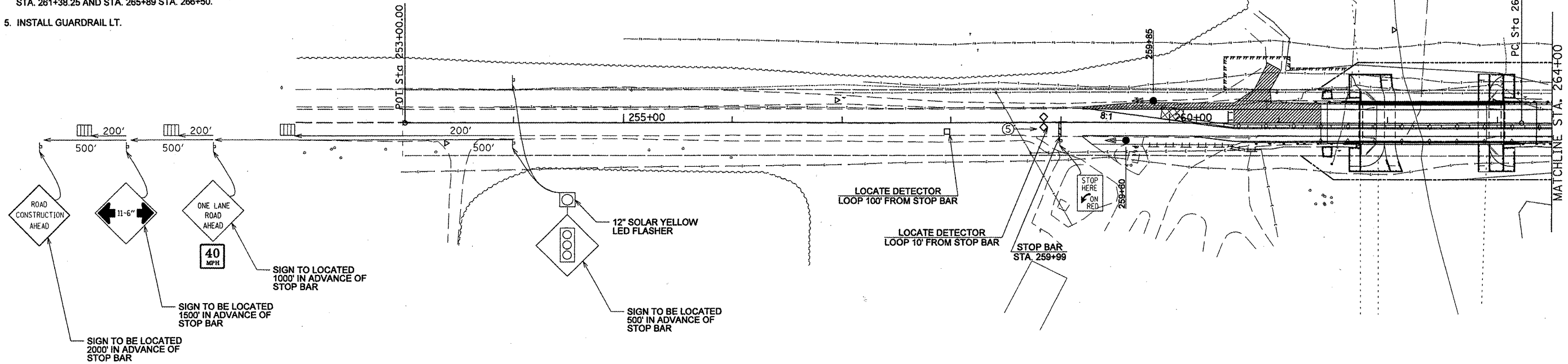
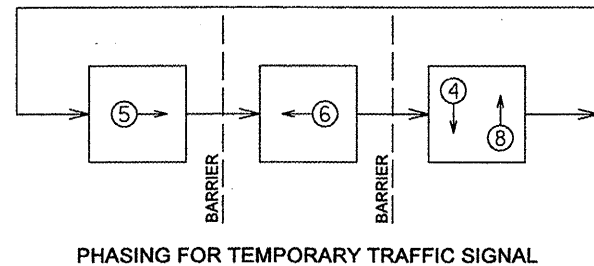


STAGE 2A CONSTRUCTION
(SEQUENCE OF CONSTRUCTION / APPLICATIONS)

- ADJUST TRAFFIC CONTROL ITEMS ACCORDING TO STAGE 2A PLANS AND STANDARD 701321. IT MAY BE REQUIRED TO RELOCATE TRAFFIC CONTROL ITEMS THAT ARE IN CONFLICT WITH CONSTRUCTION AND FLAGGERS MAY BE NECESSARY. ALL TRAFFIC CONTROL ITEMS SHALL BE REPLACED TO THE LOCATION SHOWN ON STAGE 2A PLANS AT THE END OF EACH CONSTRUCTION DAY.
- REBUILD ENTRANCE LOCATED LT. STA. 260+68.81. INGRESS AND EGRESS SHALL BE MAINTAINED FOR ALL ENTRANCES DURING CONSTRUCTION.
- BUILD FULL DEPTH SHOULDERS FROM LT. STA. 259+20 TO STA. 261+38.25 AND RT. STA. 265+89 TO STA. 267+10.
- WEDGE/LEVEL OR MILL/OVERLAY PAVEMENT FROM STA. 260+59 TO STA. 261+38.25 AND STA. 265+89 STA. 266+50.
- INSTALL GUARDRAIL LT.



- SYMBOLS:**
- WORK AREA
 - TRAFFIC SIGNAL
 - TEMPORARY CONCRETE BARRIER
 - IMPACT ATTENUATOR, TEMPORARY (NON-REDIRECTIVE), TEST LEVEL 3
 - DRUM WITH STEADY BURNING LIGHT
 - DETECTOR LOOP
 - SIGN
 - TYPE II BARRICADE
 - TYPE III BARRICADE
 - TYPE C BIDIRECTIONAL REFLECTOR
 - STEADY BURNING LIGHTS AND DOUBLE VERTICAL PANELS
 - TEMPORARY RUMBLE STRIPS
 - DOUBLE VERTICAL PANEL



NOTE:
CONSTRUCTION AREA ON NORTH SIDE OF BRIDGE OVERLAPS STOP BAR.
CONSIDER USING FLAGGER.

EFK·Moen, LLC
Civil Engineering Design

FILE NAME =	USER NAME = JD	DESIGNED -	REVISED -	STATE OF ILLINOIS DEPARTMENT OF TRANSPORTATION	STAGE 2A PLANS	F.A.S. RTE.	SECTION	COUNTY	TOTAL SHEETS	SHEET NO.	
#FILE#	DRAWN - JD	CHECKED - SD	REVISED -			2370	29BR-1	WOODFORD	76	15	
	PLOT SCALE = #SCALE#	DATE - 10/1/09	REVISED -			CONTRACT NO. 68466					
	PLOT DATE = 10/8/2009		REVISED -			FED. ROAD DIST. NO. ILLINOIS FED. AID PROJECT					

SCALE: 1" = 50' SHEET NO. 4 OF 5 SHEETS