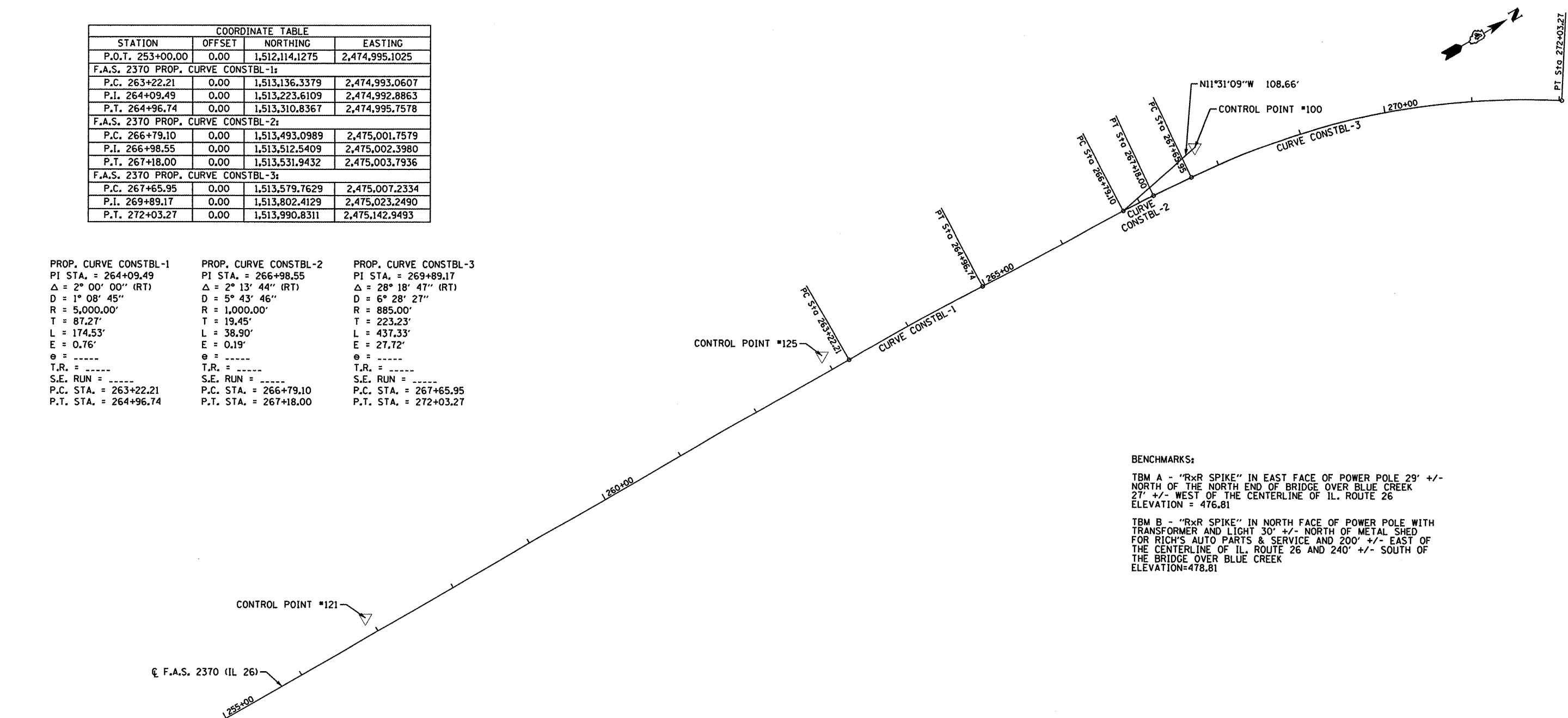
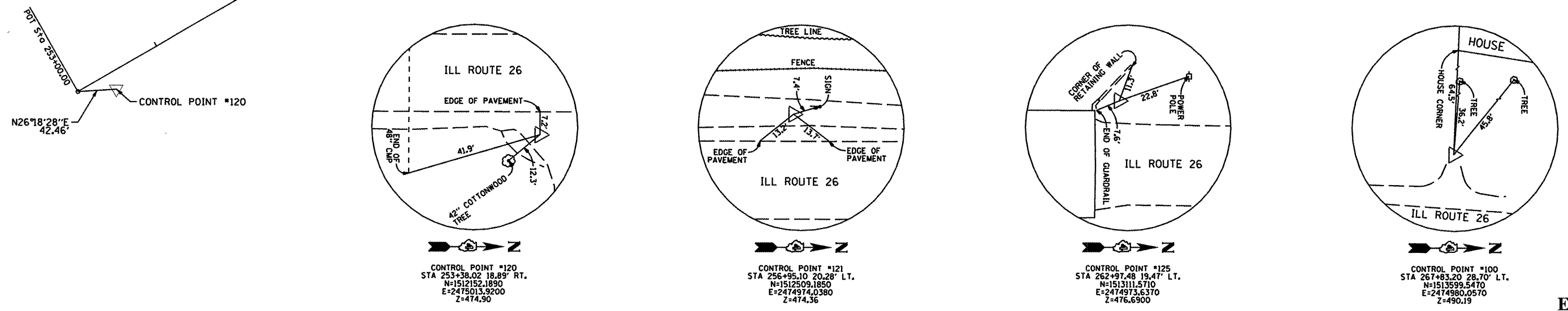


COORDINATE TABLE			
STATION	OFFSET	NORTHING	EASTING
P.O.T. 253+00.00	0.00	1,512,114.1275	2,474,995.1025
F.A.S. 2370 PROP. CURVE CONSTBL-1:			
P.C. 263+22.21	0.00	1,513,136.3379	2,474,993.0607
P.I. 264+09.49	0.00	1,513,223.6109	2,474,992.8863
P.T. 264+96.74	0.00	1,513,310.8367	2,474,995.7578
F.A.S. 2370 PROP. CURVE CONSTBL-2:			
P.C. 266+79.10	0.00	1,513,493.0989	2,475,001.7579
P.I. 266+98.55	0.00	1,513,512.5409	2,475,002.3980
P.T. 267+18.00	0.00	1,513,531.9432	2,475,003.7936
F.A.S. 2370 PROP. CURVE CONSTBL-3:			
P.C. 267+65.95	0.00	1,513,579.7629	2,475,007.2334
P.I. 269+89.17	0.00	1,513,802.4129	2,475,023.2490
P.T. 272+03.27	0.00	1,513,990.8311	2,475,142.9493

PROP. CURVE CONSTBL-1 PI STA. = 264+09.49 Δ = 2° 00' 00" (RT) D = 1° 08' 45" R = 5,000.00' T = 87.27' L = 174.53' E = 0.76' e = ----- T.R. = ----- S.E. RUN = ----- P.C. STA. = 263+22.21 P.T. STA. = 264+96.74	PROP. CURVE CONSTBL-2 PI STA. = 266+98.55 Δ = 2° 13' 44" (RT) D = 5° 43' 46" R = 1,000.00' T = 19.45' L = 38.90' E = 0.19' e = ----- T.R. = ----- S.E. RUN = ----- P.C. STA. = 266+79.10 P.T. STA. = 267+18.00	PROP. CURVE CONSTBL-3 PI STA. = 269+89.17 Δ = 28° 18' 47" (RT) D = 6° 28' 27" R = 885.00' T = 223.23' L = 437.33' E = 27.72' e = ----- T.R. = ----- S.E. RUN = ----- P.C. STA. = 267+65.95 P.T. STA. = 272+03.27
---	--	--



BENCHMARKS:
 TBM A - "R x R SPIKE" IN EAST FACE OF POWER POLE 29' +/- NORTH OF THE NORTH END OF BRIDGE OVER BLUE CREEK 27' +/- WEST OF THE CENTERLINE OF IL. ROUTE 26 ELEVATION = 476.81
 TBM B - "R x R SPIKE" IN NORTH FACE OF POWER POLE WITH TRANSFORMER AND LIGHT 30' +/- NORTH OF METAL SHED FOR RICH'S AUTO PARTS & SERVICE AND 200' +/- EAST OF THE CENTERLINE OF IL. ROUTE 26 AND 240' +/- SOUTH OF THE BRIDGE OVER BLUE CREEK ELEVATION=478.81



EFK Moen, LLC
Civil Engineering Design

FILE NAME =	USER NAME = JD	DESIGNED - ---	REVISED - ---	STATE OF ILLINOIS DEPARTMENT OF TRANSPORTATION	ALIGNMENT, TIES AND BENCHMARKS	F.A.S. RTE. 2370	SECTION 29BR-1	COUNTY WOODFORD	TOTAL SHEETS 76	SHEET NO. 9		
*FILEL#	PLOT SCALE = #SCALE#	DRAWN - JD	REVISED - ---			SCALE: N.T.S.	SHEET NO. 1 OF 1 SHEET	CONTRACT NO. 68466				
	PLOT DATE = 10/1/2009	CHECKED - SD	REVISED - ---			FED. ROAD DIST. NO. - ILLINOIS FED. AID PROJECT						
		DATE - 10/1/09	REVISED - ---									