

INDEX OF SHEETS

1. COVER SHEET
2. GENERAL NOTES
3. SUMMARY OF QUANTITIES
4. TYPICAL SECTION
5. STAGE CONSTRUCTION FOT TRAFFIC CONTROL AND PROTECTION, STANDARD 701316
6. PAVEMENT MARKING
7. PIER CAP REPAIR DETAILS

STANDARDS

- | | |
|-----------|--|
| 000001-05 | STANDARD SYMBOLS, ABBREVIATIONS AND PATTERNS |
| 001001-02 | AREAS OF REINFORCEMENT BARS |
| 001006 | DECIMAL OF AN INCH AND OF A FOOT |
| 635011-02 | REFLECTOR MARKER AND MOUNTING DETAILS |
| 701001-02 | OFF-ROAD OPERATIONS 2L, 2W, MORE THAN 15' (4.5 m) AWAY |
| 701006-03 | OFF-ROAD OPERATIONS 2L, 2W, 15' (4.5 m) TO 24" (600 mm) FROM PAVEMENT EDGE |
| 701201-03 | LANE CLOSURE, 2L, 2W, DAY ONLY, FOR SPEEDS \geq 45 MPH |
| 701301-03 | LANE CLOSURE, 2L, 2W, SHORT TIME OPERATIONS |
| 701311-03 | LANE CLOSURE, 2L, 2W, MOVING OPERATIONS - DAY ONLY |
| 701321-10 | LANE CLOSURE, 2L, 2W, BRIDGE REPAIR SPEEDS \geq 45 MPH |
| 701901-01 | TRAFFIC CONTROL DEVICES |
| 704001-06 | TEMPORARY CONCRETE BARRIER |

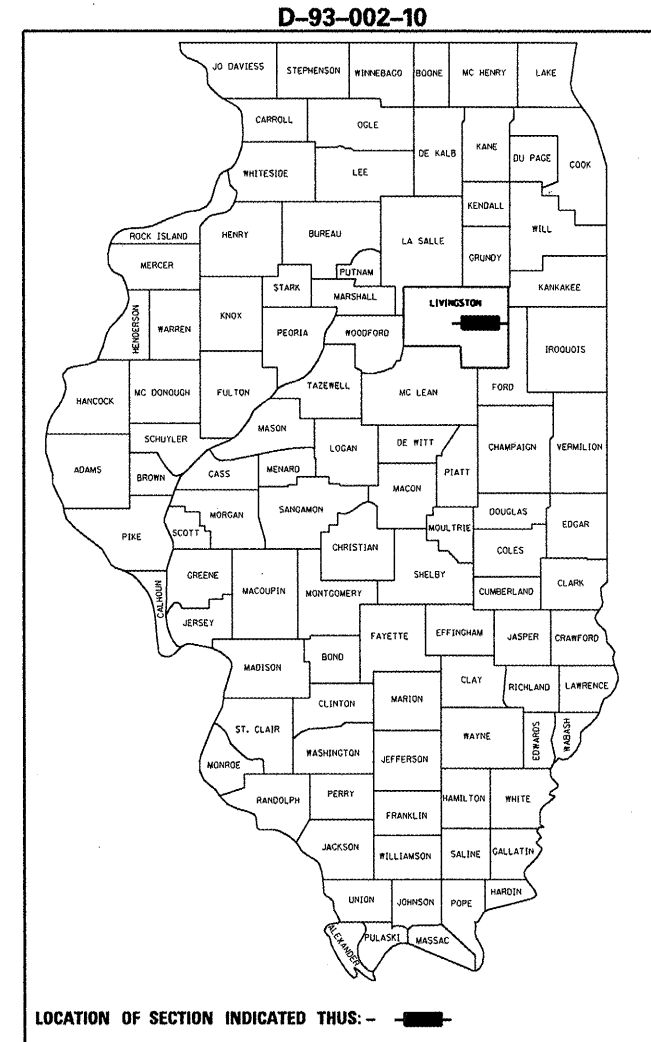
STATE OF ILLINOIS
DEPARTMENT OF TRANSPORTATION
DIVISION OF HIGHWAYS
PROPOSED
HIGHWAY PLANS

FAP ROUTE 681 (IL 116)
SECTION (113B-1)

LIVINGSTON COUNTY
C-93-035-10
PIER CAP REPAIR
SN 053-0075
OVER FELKY SLOUGH
2.87 MILES WEST OF IL ROUTE 47

PROJECT LOCATION

F.A.P. RTE.	SECTION	COUNTY	TOTAL SHEETS	SHEET NO.
681	(113B-1)	LIVINGSTON	7	1
		ILLINOIS	CONTRACT NO. 66990	



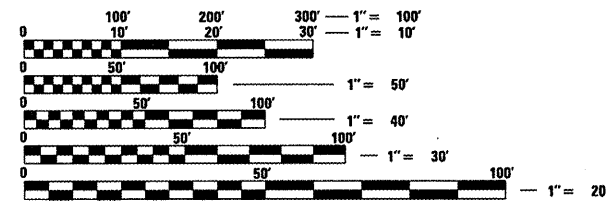
LOCATION OF SECTION INDICATED THUS: - [thick black line] -

FUNCTIONAL CLASSIFICATION
RURAL - MINOR ARTERIAL
FAP 681 (IL 116)
2007 ADT 1900
P.V 82.9% M.U. 6.6% S.U. 10.5%

STATE OF ILLINOIS
DEPARTMENT OF TRANSPORTATION
DIVISION OF HIGHWAYS

SUBMITTED 10/22 2009
George F. Ryan
 DEPUTY DIRECTOR OF HIGHWAYS, REGION ENGINEER
 December 4, 2009
Charles G. Ingensoll
 ENGINEER OF DESIGN AND ENVIRONMENT
 December 4, 2009
Christine M. Reed
 DIRECTOR OF HIGHWAYS, CHIEF ENGINEER

PRINTED BY THE AUTHORITY
OF THE STATE OF ILLINOIS

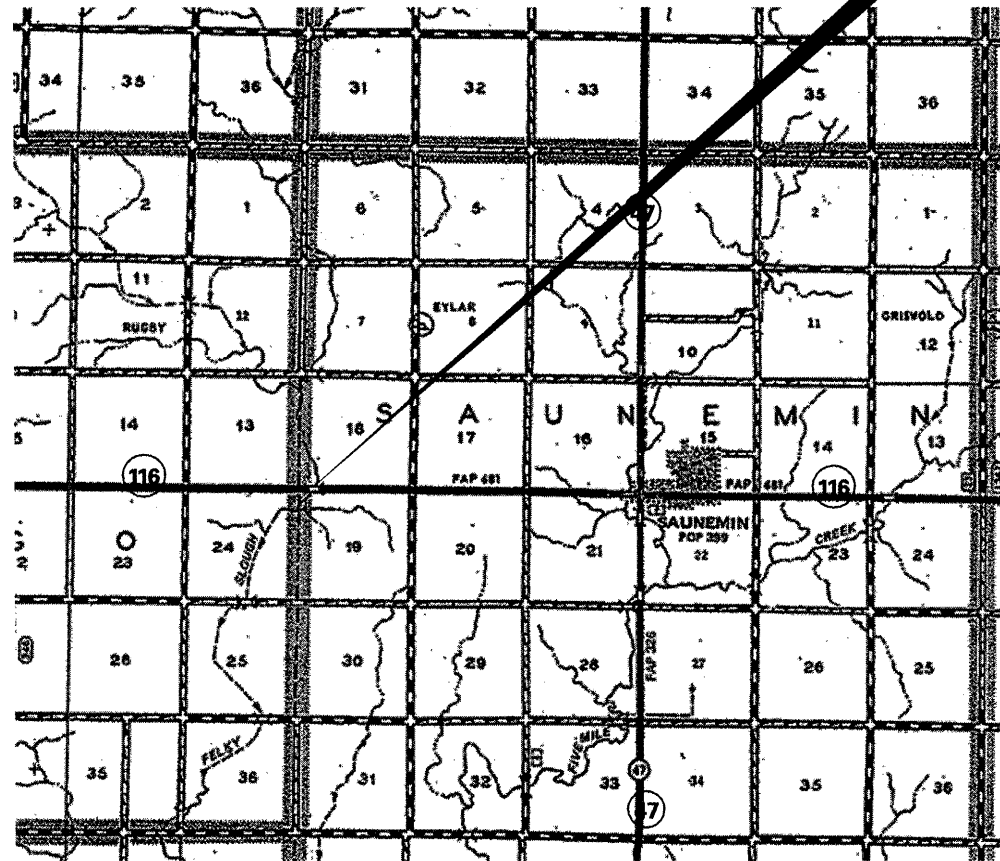


FULL SIZE PLANS HAVE BEEN PREPARED USING STANDARD ENGINEERING SCALES. REDUCED SIZED PLANS WILL NOT CONFORM TO STANDARD SCALES. IN MAKING MEASUREMENTS ON REDUCED PLANS, THE ABOVE SCALES MAY BE USED.

J.U.L.I.E.
 JOINT UTILITY LOCATION INFORMATION FOR EXCAVATION
 1-800-892-0123
 OR 811

PROJECT ENGINEER JOE KANNEL
UNIT CHIEF RON WOODSHANK
TOWNSHIP SAUNEMIN

CONTRACT NO. 66990



POINT LOCATION

GENERAL NOTES

PLAN DIMENSIONS AND DETAILS RELATIVE TO THE EXISTING PLANS ARE SUBJECT TO ROUTINE VARIATIONS. THE CONTRACTOR SHALL FIELD VERIFY EXISTING DIMENSIONS AND DETAILS AFFECTING NEW CONSTRUCTION AND MAKE NECESSARY APPROVED ADJUSTMENTS PRIOR TO CONSTRUCTION OR ORDERING OF MATERIALS. SUCH VARIATIONS SHALL NOT BE CAUSE FOR ADDITIONAL COMPENSATION FOR A CHANGE IN THE SCOPE OF THE WORK. HOWEVER, THE CONTRACTOR WILL BE PAID FOR THE QUANTITY FURNISHED BASED UPON THE UNIT BID PRICE FOR THE WORK.

THE CONTRACTOR SHALL BE RESPONSIBLE FOR PROTECTING UTILITY PROPERTY FROM CONSTRUCTION OPERATIONS AS OUTLINED IN ARTICLE 107.31 OF THE STANDARD SPECIFICATIONS. THE "JULIE" NUMBER IS 1-800-892-0123. A MINIMUM OF FORTY-EIGHT (48) HOURS ADVANCE NOTICE IS REQUIRED.

THE COST OF ANY SAW CUTS MADE TO COMPLETE THE WORK AS DESCRIBED IN PLAN DETAILS, UNLESS OTHERWISE NOTED SHALL NOT BE PAID FOR SEPARATELY BUT SHALL BE INCLUDED WITH THE VARIOUS PAY REMOVAL PAY ITEMS INVOLVED.

FOR STABILIZATION, ALL TYPE III BARRICADES SHALL REQUIRE A MINIMUM OF FOUR SAND BAGS PER BARRICADE.

ANY REFERENCE TO A STANDARD IN THESE PLANS SHALL BE INTERPRETED TO MEAN THE EDITION AS INDICATED BY THE SUBNUMBER SHOWN IN THE LIST OF STANDARDS OR THE COPY INCLUDED IN THESE PLANS.

DATE:

10-21-09

PREPARED BY:

R. Paul

DISTRICT STUDIES & PLANS ENGINEER

EXAMINED BY:

Herb Gray

DISTRICT CONSTRUCTION ENGINEER

Wayne Phillips

DISTRICT MATERIALS ENGINEER

Bruce A. Hooker

DISTRICT OPERATIONS ENGINEER

FILE NAME =	USER NAME = woodshankr1	DESIGNED - RON WOODSHANK	REVISED - -----
c:\pwork\pwwdot\WOODSHANKRL\dms91654	0366998.dgn	DRAWN - RON WOODSHANK	REVISED - -----
	PLOT SCALE = 100.0000' / IN.	CHECKED - ----	REVISED - -----
	PLOT DATE = Oct 21, 2009 - 10:12:56 AM	DATE - -----	REVISED - -----

STATE OF ILLINOIS
DEPARTMENT OF TRANSPORTATION

GENERAL NOTES

SCALE: _____ SHEET NO. 1 OF 1 SHEETS STA. _____ TO STA. _____

F.A.P. RTE.	SECTION	COUNTY	TOTAL SHEETS	SHEET NO.
681	(113BR-1)I	LIVINGSTON	7	2
ILLINOIS			CONTRACT NO. 66990	
ILLINOIS FED. AID PROJECT				

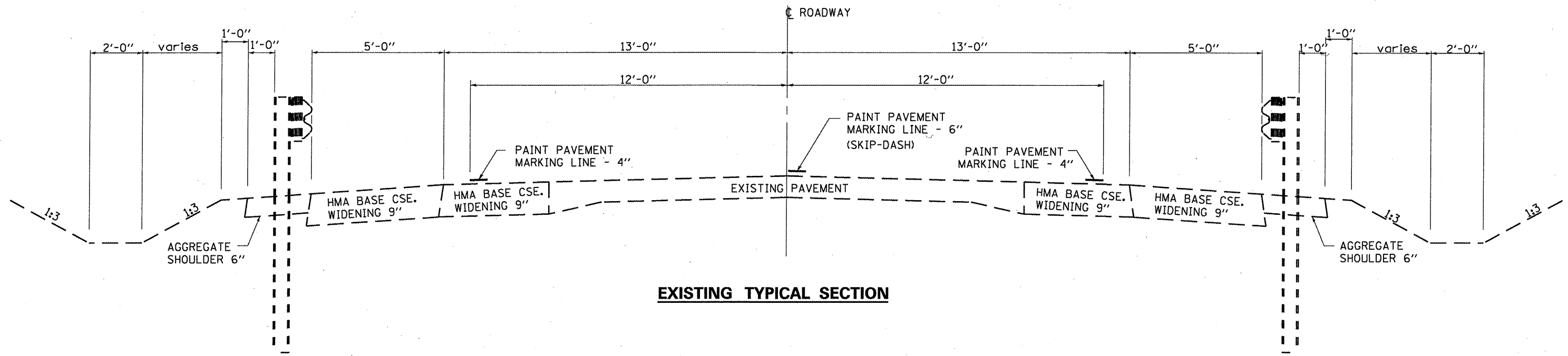
SUMMARY OF QUANTITIES

CONSTRUCTION CODE SFTY-2A

RURAL
100% STATE
TOTAL
QUANTITY

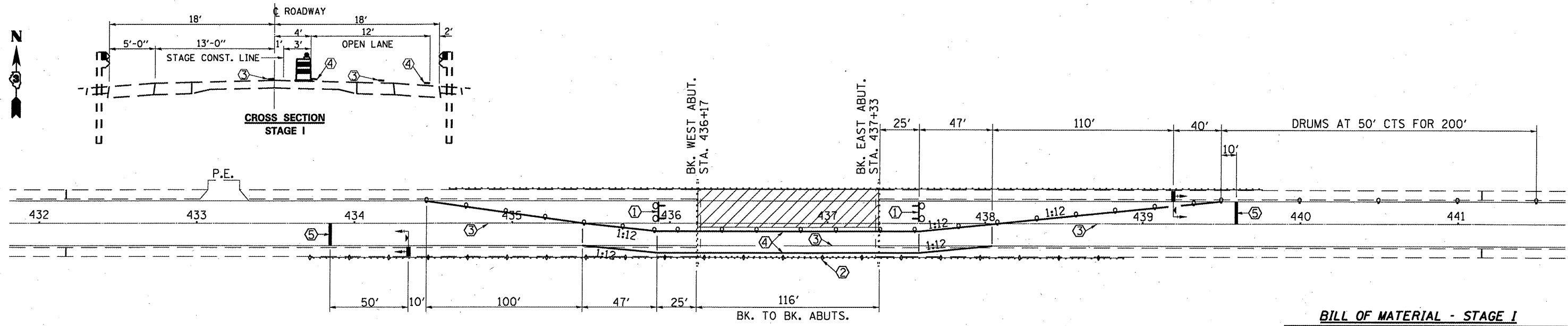
CODE NO.	ITEM	UNIT	RURAL 100% STATE TOTAL QUANTITY
50300225	CONCRETE STRUCTURES	CU YD	7.1
50501130	STRUCTURAL STEEL REPAIR	POUND	2400
50800205	REINFORCEMENT BARS, EPOXY COATED	POUND	510
67100100	MOBILIZATION	L SUM	1
70100900	TRAFFIC CONTROL AND PROTECTION, STANDARD 701316 (SPECIAL)	EACH	1
* 78001110	PAINT PAVEMENT MARKING - LINE 4"	FOOT	454
* 78001130	PAINT PAVEMENT MARKING - LINE 6"	FOOT	145
78300100	PAVEMENT MARKING REMOVAL	SQ FT	223

* SPECIALTY ITEM



EXISTING TYPICAL SECTION

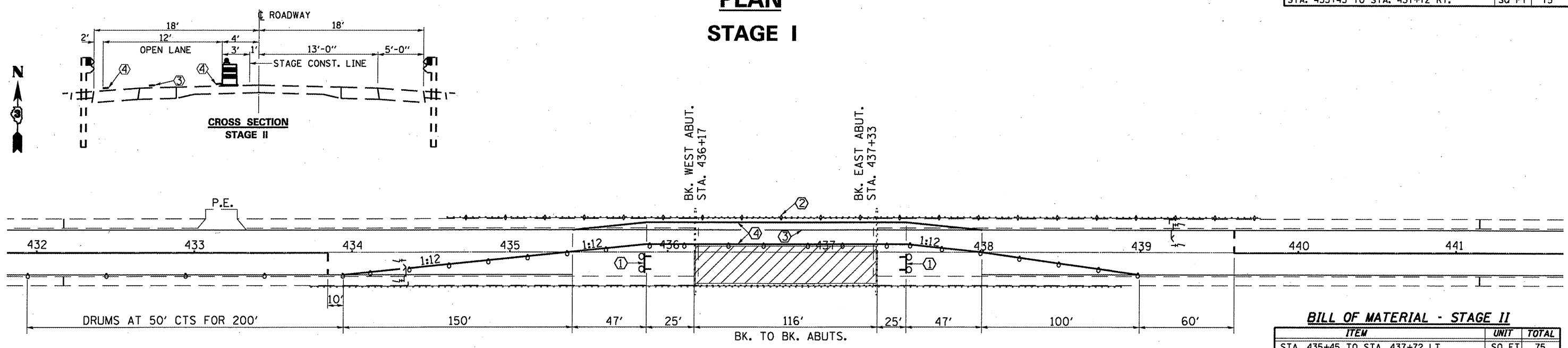
FILE NAME =	USER NAME = woodshankr1	DESIGNED - RON WOODSHANK	REVISED -	STATE OF ILLINOIS DEPARTMENT OF TRANSPORTATION	TYPICAL SECTION	F.A.P. RTE.	SECTION	COUNTY	TOTAL SHEETS	SHEET NO.	
ca:\pw\work\PWIDOT\WOODSHANKRL\dms91654	0366990.dgn	DRAWN - RON WOODSHANK	REVISED -			681	(113BR-1)I	LIVINGSTON	7	4	
PLOT SCALE = 100.0000' / IN.	CHECKED -	REVISIED -	REVISIED -			ILLINOIS CONTRACT NO. 66990					
PLOT DATE = Oct 21, 2009 - 10:13:00 AM	DATE -	REVISIED -	REVISIED -			ILLINOIS FED. AID PROJECT					
				SCALE: _____	SHEET NO. 1 OF 1 SHEETS	STA. _____	TO STA. _____				



BILL OF MATERIAL - STAGE I

ITEM	UNIT	TOTAL
STA. 433+85 TO STA. 439+65 (C)	SO FT	73
STA. 435+45 TO STA. 437+72 RT.	SO FT	75

**PLAN
STAGE I**



BILL OF MATERIAL - STAGE II

ITEM	UNIT	TOTAL
STA. 435+45 TO STA. 437+72 LT.	SO FT	75

**PLAN
STAGE II**

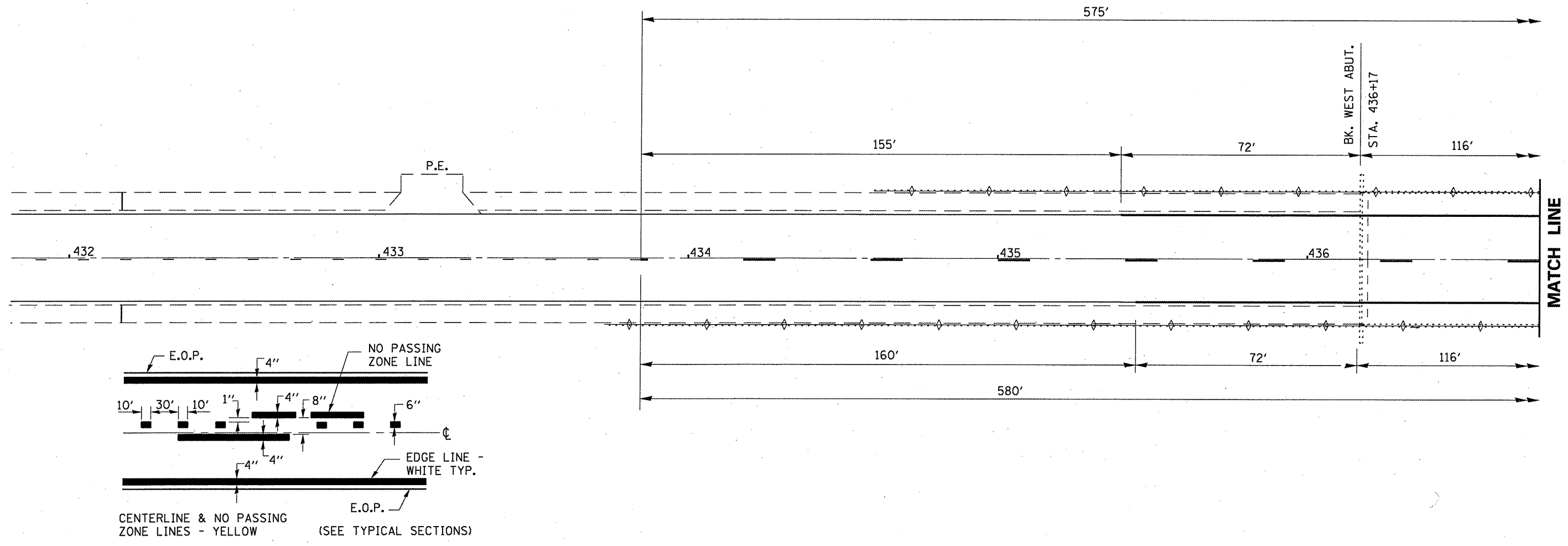
NOTES:

- VERTICAL PANELS WILL NOT BE REQUIRED WITH THIS DETAIL.
- DETECTOR LOOPS WILL NOT BE REQUIRED WITH THIS DETAIL.
- SEE STANDARD 701316 FOR ADVANCE SIGNING DETAILS NOT SHOWN.
- RAISED REFLECTIVE PAVEMENT MARKERS THAT CONFLICT WITH REVISED TRAFFIC PATTERN SHALL HAVE THE REFLECTIVE LENS REMOVED AND REINSTALLED AFTER THE NORMAL TRAFFIC PATTERN HAS BEEN RESTORED.
- TEMPORARY PAVEMENT MARKING PLACEMENT AND REMOVAL SHALL BE INCLUDED IN THE COST OF STANDARD 701316.

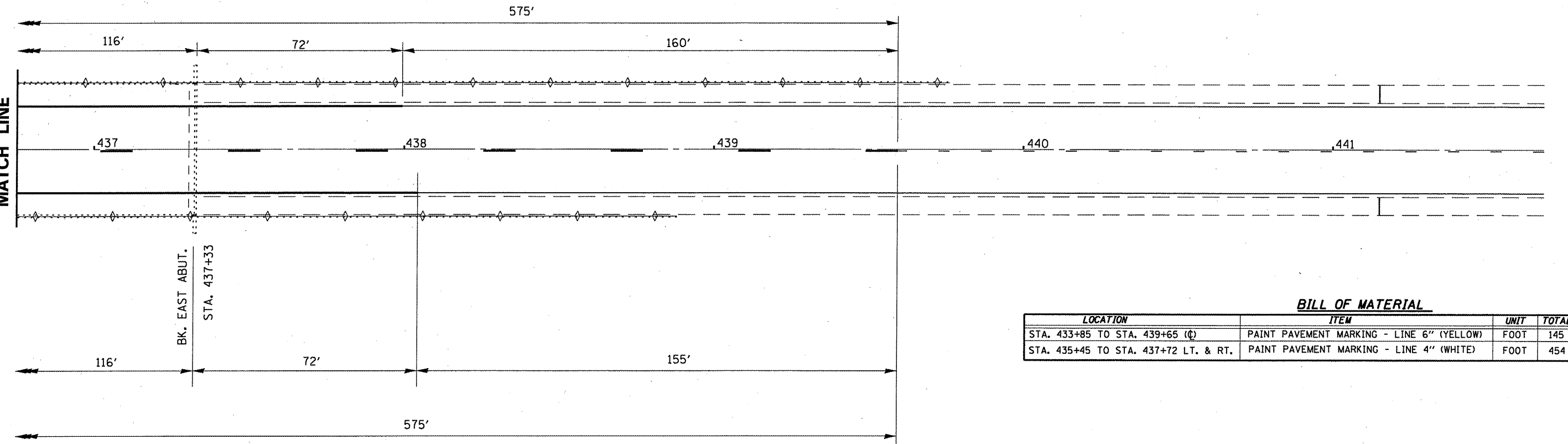
SYMBOLS

- WORK AREA
- TYPE III BARRICADE WITH FLASHING LIGHTS
- SIGN
- DRUM WITH STEADY BURNING LIGHTS
- EXISTING OR NEW CRYSTAL, BIDIRECTIONAL PARAPET/GUARDRAIL MARKER
- TYPE III BARRICADE WITH FLASHING LIGHTS
- DRUM WITH STEADY BURNING LIGHTS
- EXISTING OR NEW CRYSTAL, BIDIRECTIONAL PARAPET/GUARDRAIL MARKER
- TEMPORARY "PORTABLE" BRIDGE TRAFFIC SIGNAL WITH BACK PLATE AND MICROWAVE DETECTOR

- ① TYPE III BARRICADES TO BE PLACED WHEN NO WORK IS BEING PERFORMED.
- ② EXISTING OR NEW GUARDRAIL MARKERS AT 25' CTS. SEE STANDARDS 635011.
- ③ PAVEMENT MARKING REMOVAL.
- ④ TEMPORARY PAVEMENT MARKING LINE 4" (WHITE)
- ⑤ TEMPORARY PAVEMENT MARKING LINE 24" (WHITE)



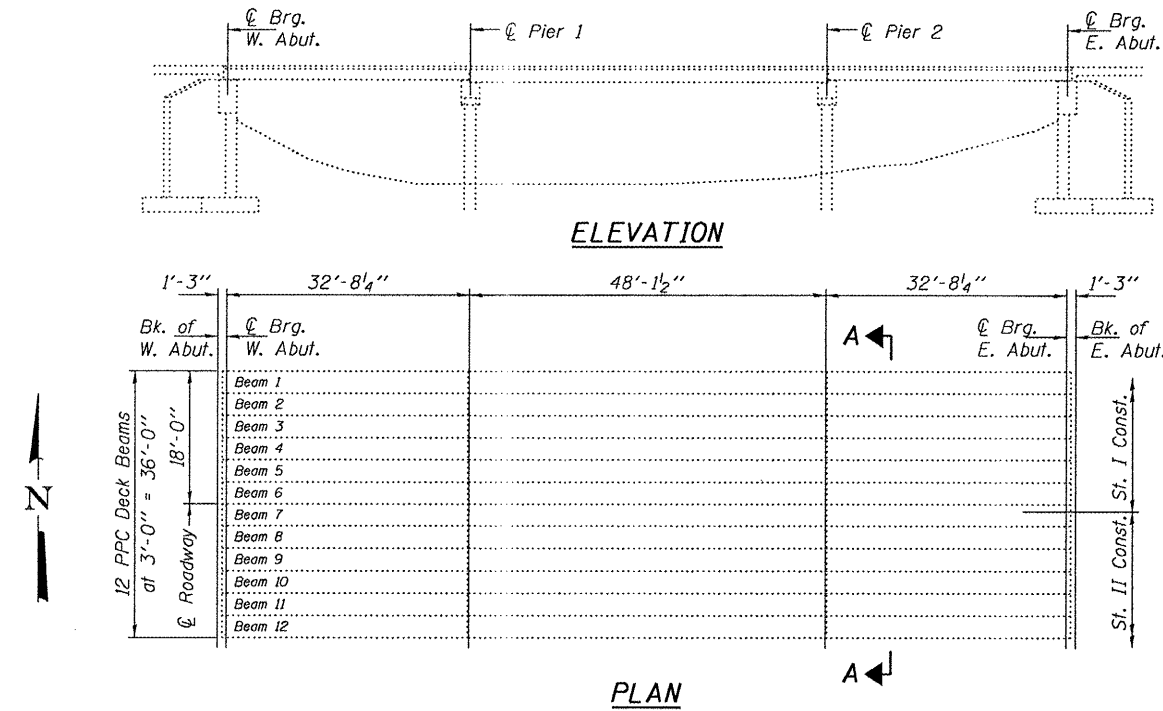
PAVEMENT MARKING



BILL OF MATERIAL

LOCATION	ITEM	UNIT	TOTAL
STA. 433+85 TO STA. 439+65 (C)	PAINT PAVEMENT MARKING - LINE 6" (YELLOW)	FOOT	145
STA. 435+45 TO STA. 437+72 LT. & RT.	PAINT PAVEMENT MARKING - LINE 4" (WHITE)	FOOT	454

STATE OF ILLINOIS
DEPARTMENT OF TRANSPORTATION



GENERAL NOTES

The Contractor shall use extreme care during concrete removal so as not to damage the PPC Deck beams.

Existing exposed reinforcement shall be cleaned, straightened and incorporated into the new construction.

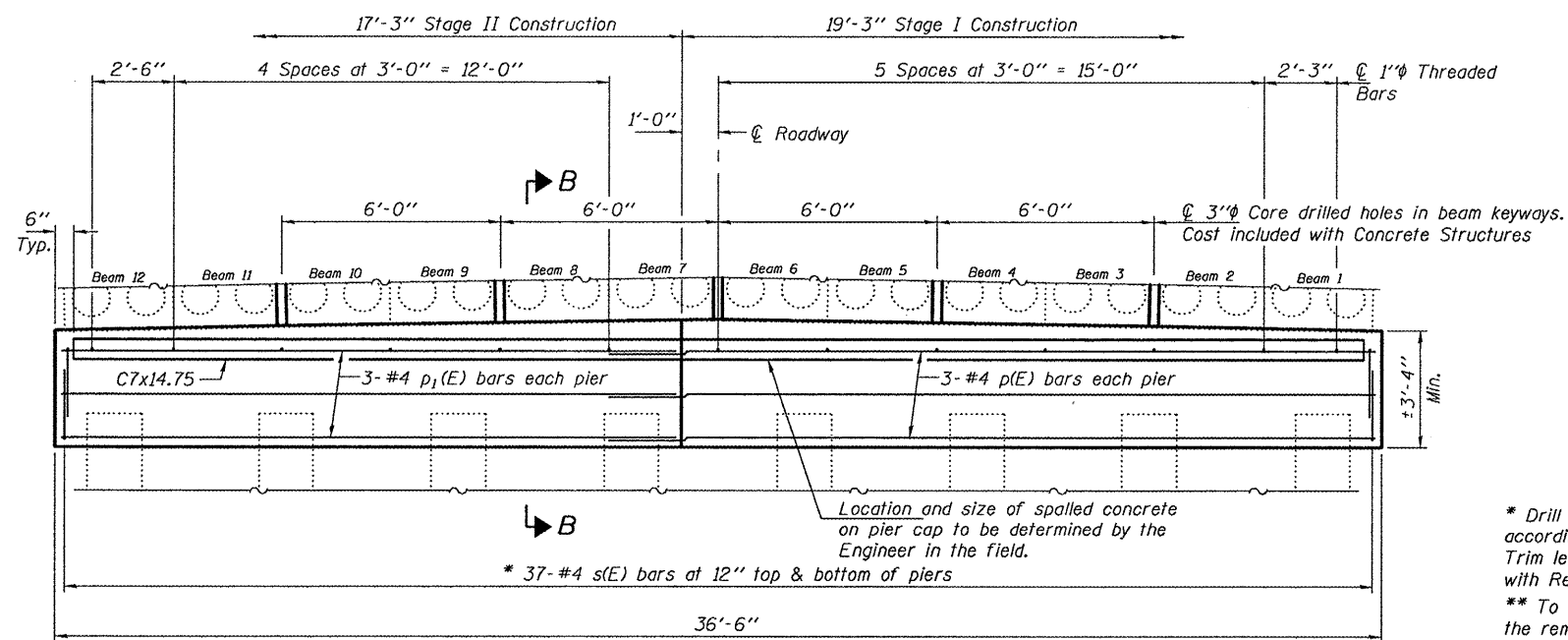
Any reinforcement bars that are damaged during concrete removal shall be replaced with an approved bar splicer or anchorage system. Cost shall be included with Concrete Structures.

Plan dimensions and details relative to existing plans are subject to routine variations. The Contractor shall field verify existing dimensions and details affecting new construction and make necessary approved adjustments prior to construction or ordering of materials. Such variations shall not be cause for additional compensation for a change in scope of the work, however, the Contractor will be paid for the quantity actually furnished based upon the unit price bid for the work.

Reinforcement bars shall conform to the requirements of ASTM A 706 Gr 60. See Special Provisions.

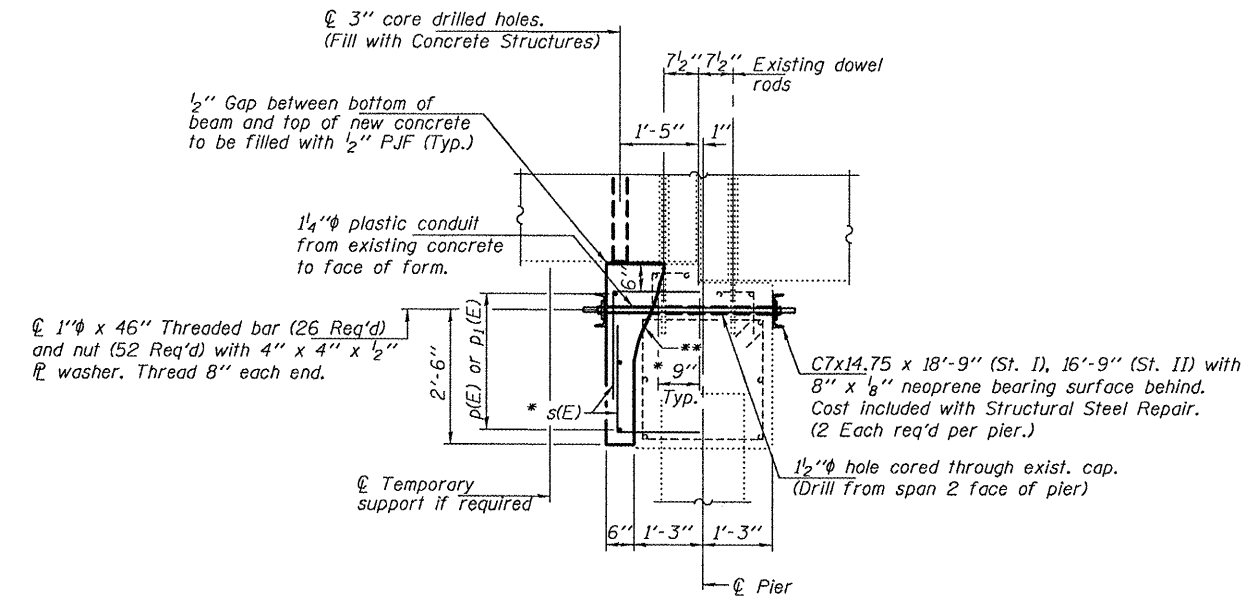
Reinforcement bars designated (E) shall be epoxy coated.

Self consolidating concrete shall be used throughout. See Special Provisions.



SECTION A-A

(Pier 2 shown, Pier 1 similar by rotation)
Stage I traffic control shall remain in place until Stage I concrete has cured.
Stage II traffic control shall remain in place until Stage II concrete has cured.



SECTION B-B

Liberally grease and wrap threaded bar in waxed paper prior to insertion.

TOTAL BILL OF MATERIAL

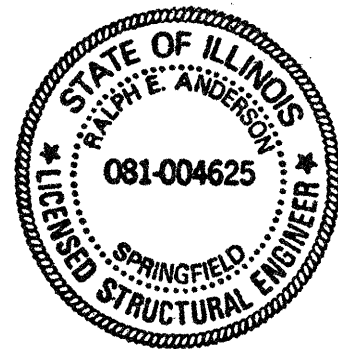
Bar	No.	Size	Length	Shape
p(E)	6	#4	21'-1"	—
p1(E)	6	#4	17'-1"	—
s(E)	148	#4	3'-7"	L
Structural Steel Repair		Pound		2400
Concrete Structures		Cu. Yd.		7.1
Reinforcement Bars, Epoxy Coated		Pound		510

* Drill and epoxy grout 9" min. into existing cap according to Article 584 of the Standard Specifications. Trim leg to maintain minimum clearance. Cost included with Reinforcement Bars, Epoxy Coated.

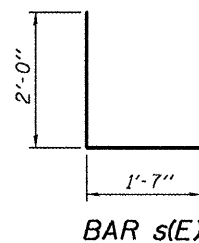
** To ensure stability of the existing beams, the removal shall not go deeper than the existing dowel rods. Cost included with Concrete Structures.

**PIER CAP REPAIR DETAILS
FAP 681 OVER FELKY SLOUGH
SN 053-0075**

DESIGNED	Victor H. Veliz	NOVEMBER 9, 2009
CHECKED	Ramin Baliva	EXAMINED
DRAWN	baliva	PASSED
CHECKED	VHV	



Expires: November 30, 2010



SHEET NO. 1 1 SHEETS	F.A.P. RTE.	SECTION	COUNTY	TOTAL SHEETS	SHEET NO.
	681	(113B-1)I	LIVINGSTON	7	7
CONTRACT NO. 66990					
FED. ROAD DIST. NO.		ILLINOIS	FED. AID PROJECT		