

INDEX OF SHEETS

1. COVER SHEET
2. GENERAL NOTES
3. SUMMARY OF QUANTITIES
4. TYPICAL SECTION
5. STAGE CONSTRUCTION FOT TRAFFIC CONTROL AND PROTECTION, STANDARD 701316
6. PAVEMENT MARKING
7. PIER CAP REPAIR DETAILS

STANDARDS

- | | |
|-----------|--|
| 000001-05 | STANDARD SYMBOLS, ABBREVIATIONS AND PATTERNS |
| 001001-02 | AREAS OF REINFORCEMENT BARS |
| 001006 | DECIMAL OF AN INCH AND OF A FOOT |
| 635011-02 | REFLECTOR MARKER AND MOUNTING DETAILS |
| 701001-02 | OFF-ROAD OPERATIONS 2L, 2W, MORE THAN 15' (4.5 m) AWAY |
| 701006-03 | OFF-ROAD OPERATIONS 2L, 2W, 15' (4.5 m) TO 24" (600 mm) FROM PAVEMENT EDGE |
| 701201-03 | LANE CLOSURE, 2L, 2W, DAY ONLY, FOR SPEEDS \geq 45 MPH |
| 701301-03 | LANE CLOSURE, 2L, 2W, SHORT TIME OPERATIONS |
| 701311-03 | LANE CLOSURE, 2L, 2W, MOVING OPERATIONS - DAY ONLY |
| 701321-10 | LANE CLOSURE, 2L, 2W, BRIDGE REPAIR SPEEDS \geq 45 MPH |
| 701901-01 | TRAFFIC CONTROL DEVICES |
| 704001-06 | TEMPORARY CONCRETE BARRIER |

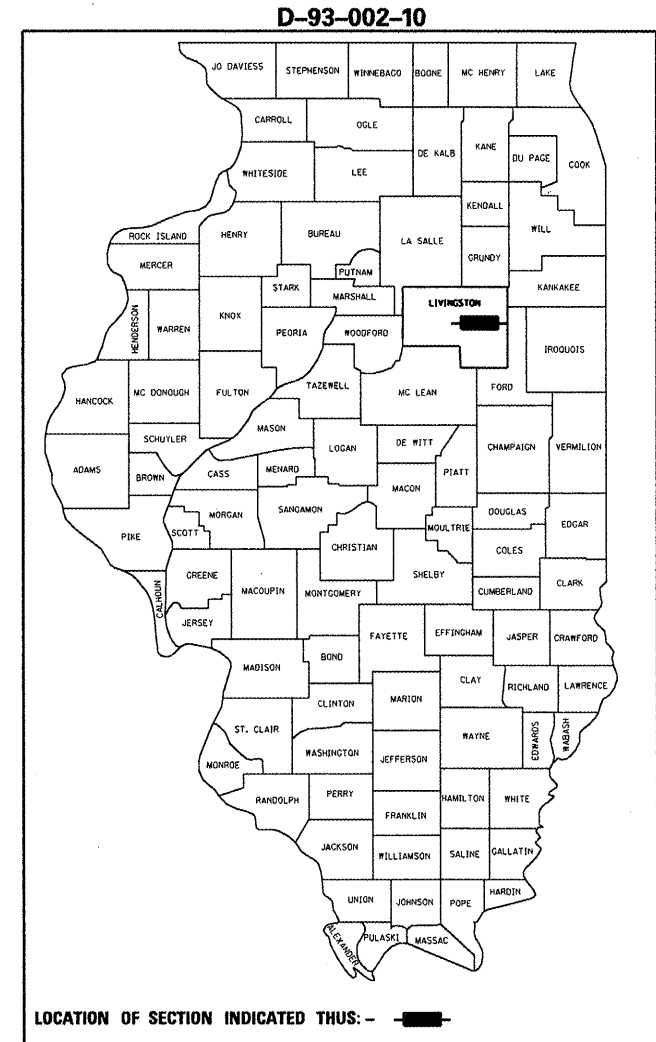
STATE OF ILLINOIS
DEPARTMENT OF TRANSPORTATION
DIVISION OF HIGHWAYS
PROPOSED
HIGHWAY PLANS

FAP ROUTE 681 (IL 116)
SECTION (113B-1)

LIVINGSTON COUNTY
C-93-035-10
PIER CAP REPAIR
SN 053-0075
OVER FELKY SLOUGH
2.87 MILES WEST OF IL ROUTE 47

PROJECT LOCATION

F.A.P. RTE.	SECTION	COUNTY	TOTAL SHEETS	SHEET NO.
681	(113B-1)	LIVINGSTON	7	1
ILLINOIS CONTRACT NO. 66990				



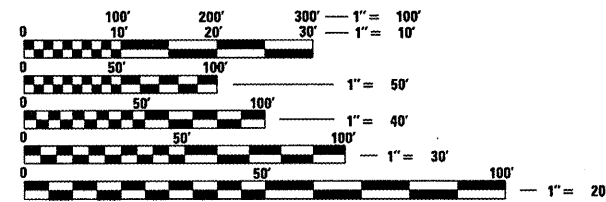
LOCATION OF SECTION INDICATED THUS: - [thick black line] -

FUNCTIONAL CLASSIFICATION
 RURAL - MINOR ARTERIAL
 FAP 681 (IL 116)
 2007 ADT 1900
 P.V 82.9% M.U. 6.6% S.U. 10.5%

STATE OF ILLINOIS
 DEPARTMENT OF TRANSPORTATION
 DIVISION OF HIGHWAYS

SUBMITTED 10/22 2009
George F. Ryan
 DEPUTY DIRECTOR OF HIGHWAYS, REGION ENGINEER
 December 4, 2009
Charles G. Ingensoll
 ENGINEER OF DESIGN AND ENVIRONMENT
 December 4, 2009
Christine M. Reed
 DIRECTOR OF HIGHWAYS, CHIEF ENGINEER

PRINTED BY THE AUTHORITY
OF THE STATE OF ILLINOIS

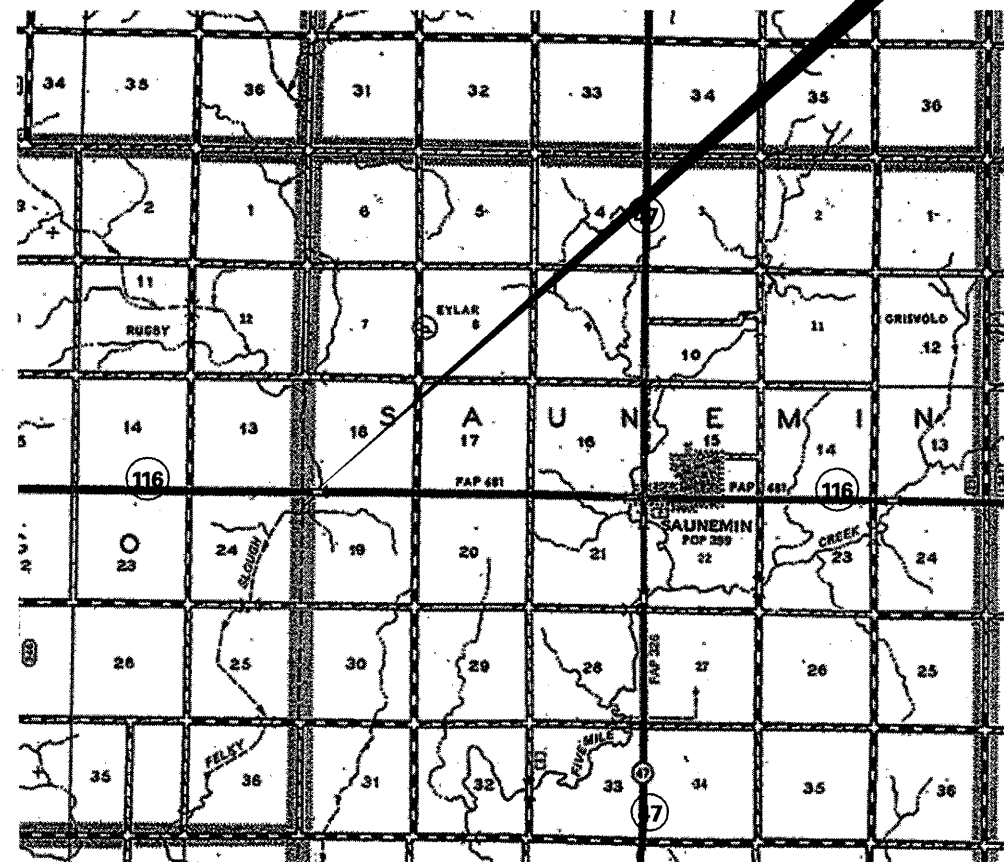


FULL SIZE PLANS HAVE BEEN PREPARED USING STANDARD ENGINEERING SCALES. REDUCED SIZED PLANS WILL NOT CONFORM TO STANDARD SCALES. IN MAKING MEASUREMENTS ON REDUCED PLANS, THE ABOVE SCALES MAY BE USED.

J.U.L.I.E.
 JOINT UTILITY LOCATION INFORMATION FOR EXCAVATION
 1-800-892-0123
 OR 811

PROJECT ENGINEER JOE KANNEL
UNIT CHIEF RON WOODSHANK
TOWNSHIP SAUNEMIN

CONTRACT NO. 66990



POINT LOCATION