

F.A.P. RTE.	SECTION	COUNTY	TOTAL SHEETS	SHEET NO.
796	(106BR)BP	FORD	7	1
FED. ROAD DIST. NO.	ILLINOIS	CONTRACT NO. 66977		

STATE OF ILLINOIS  
DEPARTMENT OF TRANSPORTATION  
DIVISION OF HIGHWAYS

**PROPOSED  
HIGHWAY PLANS**

FAP 796 (IL 115)  
SECTION (106BR)BP

FORD COUNTY  
BRIDGE PAINTING  
C-93-145-09

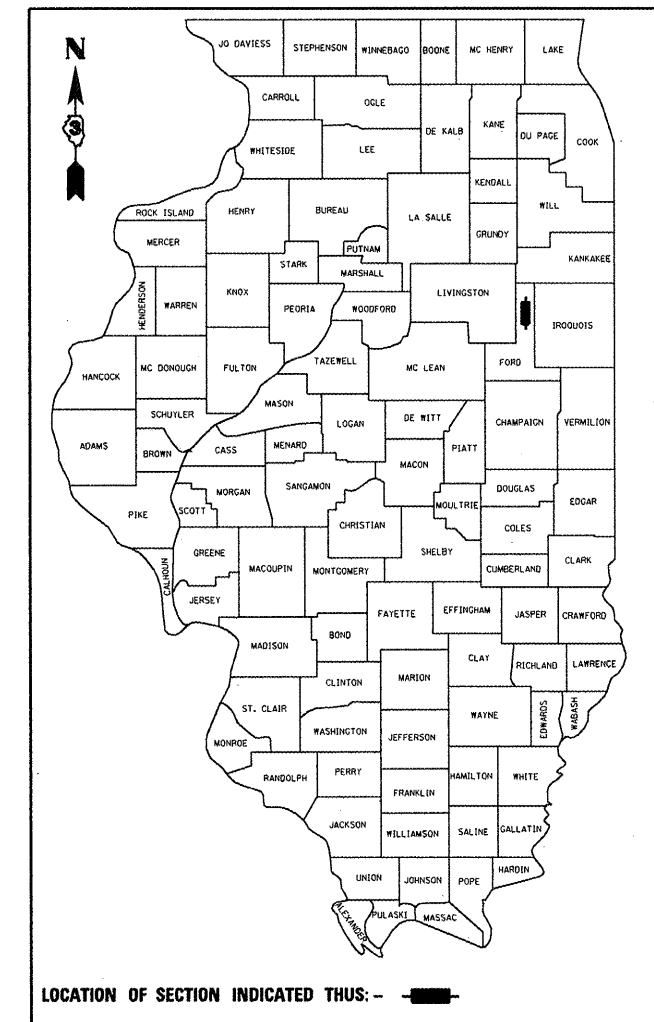
INDEX OF SHEETS

1. COVER SHEET
2. GENERAL NOTES
3. SUMMARY OF QUANTITIES
4. TYPICAL SECTION
- 5-7. EXISTING STRUCTURE PLANS - SN 027-0071

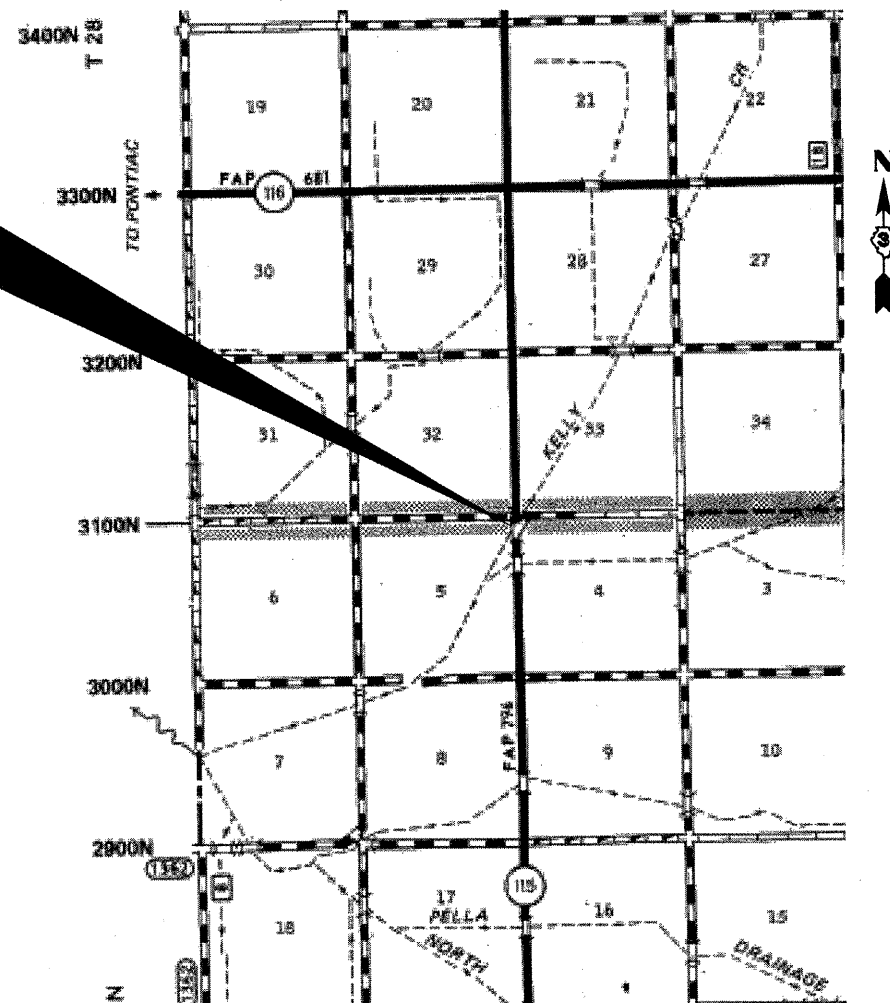
STANDARDS

- |           |  |
|-----------|--|
| 000001-05 | STANDARD SYMBOLS, ABBREVIATIONS AND PATTERNS                               |
| 701001-02 | OFF-ROAD OPERATIONS 2L, 2W, MORE THAN 15' (4.5 m) AWAY                     |
| 701006-03 | OFF-ROAD OPERATIONS 2L, 2W, 15' (4.5 m) TO 24" (600 mm) FROM PAVEMENT EDGE |
| 701201-03 | LANE CLOSURE, 2L, 2W, DAY ONLY, FOR SPEEDS ≥ 45 MPH                        |
| 701301-03 | LANE CLOSURE, 2L, 2W, SHORT TIME OPERATIONS                                |
| 701901-01 | TRAFFIC CONTROL DEVICES  |

D-93-065-09



PROJECT LOCATION  
SN 027-0071  
SECTION (106BR)  
IL 115 OVER A CREEK  
2.03 MI. SOUTH OF IL 116



LOCATION MAP  
NOT TO SCALE  
POINT LOCATION

FUNCTIONAL CLASSIFICATION  
IL 115 - MINOR ARTERIAL  
2007 ADT = 500  
P.V. = 92.0% M.U. = 6.0% S.U. = 2.0%

STATE OF ILLINOIS  
DEPARTMENT OF TRANSPORTATION  
DIVISION OF HIGHWAYS

SUBMITTED 10/22 20 09  
*George F. Ryan*  
DEPUTY DIRECTOR OF HIGHWAYS, REGION ENGINEER

December 4, 20 09  
*Charles G. Dransoll*  
ENGINEER OF DESIGN AND ENVIRONMENT

December 4, 20 09  
*Christine M. Reed*  
DIRECTOR OF HIGHWAYS, CHIEF ENGINEER

PRINTED BY THE AUTHORITY  
OF THE STATE OF ILLINOIS

MICROFILMED \_\_\_\_\_  
REEL NUMBER \_\_\_\_\_  
AWARDED \_\_\_\_\_  
RESIDENT ENGINEER \_\_\_\_\_  
AS BUILT CHANGES WERE MADE  
ON THE FOLLOWING SHEETS \_\_\_\_\_

J.U.L.I.E.  
JOINT UTILITY LOCATION INFORMATION FOR EXCAVATION  
1-800-892-0123

DISTRICT NO. 3 815-434-6131  
PROJECT ENGINEER: JOE KANNEL  
UNIT CHIEF: RON WOODSHANK  
TOWNSHIP: MONA  
CONTRACT NO. 66977