

F.A.P. RTE.	SECTION	COUNTY	TOTAL SHEETS	SHEET NO.
553	(128)RS-4	DEKALB	13	1
		ILLINOIS	CONTRACT NO. 66746	

**STATE OF ILLINOIS**  
**DEPARTMENT OF TRANSPORTATION**  
**DIVISION OF HIGHWAYS**

**PROPOSED**  
**HIGHWAY PLANS**

**FAP ROUTE 553 (IL 72)**  
**SECTION (128)RS-4**  
**PROJECT ACF-0553(152)**  
**3P MILLING & RESURFACING**  
**DEKALB COUNTY**

C-93-032-08

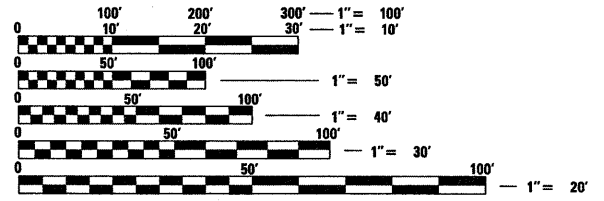
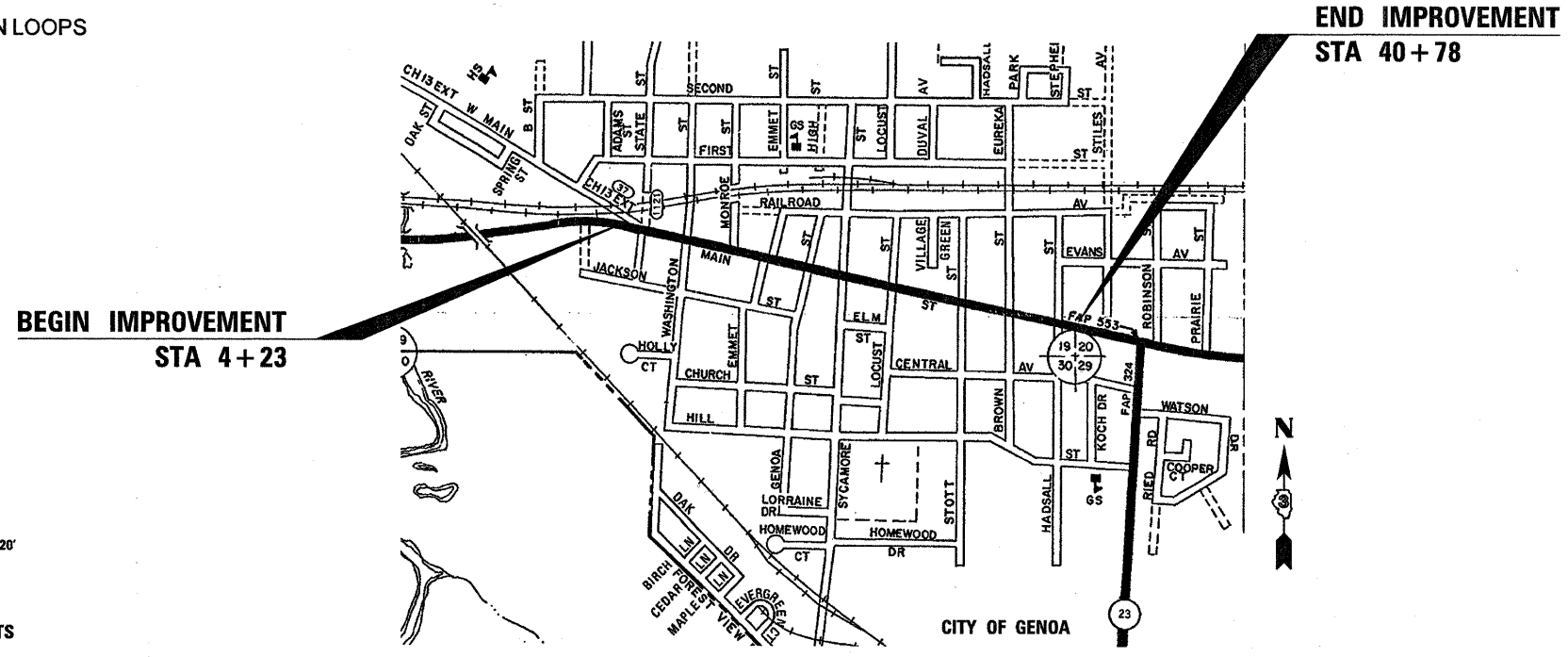
- 1 COVER SHEET
- 2 GENERAL NOTES
- 3 SUMMARY OF QUANTITIES
- 4 TYPICAL SECTIONS
- 5-6 SCHEDULES OF QUANTITIES
- 7-10 PLAN SHEETS
- 11 DETECTOR LOOP DETAILS
- 12-13 DETAILS

**STANDARDS**

- 000001-05 STANDARD SYMBOLS, ABBREVIATIONS AND PATTERNS
- 424001-05 CURB RAMPS FOR SIDEWALK
- 602401-02 MANHOLE, TYPE A
- 604001-03 FRAME AND LIDS, TYPE 1
- 606001-04 CONCRETE CURB TYPE B AND COMBINATION CONCRETE CURB AND GUTTER
- 701001-02 OFF-ROAD OPERATIONS 2L, 2W, MORE THAN 15' (4.5 m) AWAY
- 701006-03 OFF-ROAD OPERATIONS 2L, 2W, 15' (4.5 m) TO 24" (600 mm) FROM PAVEMENT EDGE
- 701011-02 OFF-ROAD MOVING OPERATIONS 2L, 2W, DAY ONLY
- 701301-03 LANE CLOSURE, 2L, 2W, SHORT TIME OPERATIONS
- 701311-03 LANE CLOSURE, 2L, 2W, MOVING OPERATIONS - DAY ONLY
- 701501-05 URBAN LANE CLOSURE, 2L, 2W, UNDIVIDED
- 701801-04 LANE CLOSURE, MULTILANE 1W OR 2W CROSSWALK OR SIDEWALK CLOSURE
- 701901-01 TRAFFIC CONTROL DEVICES
- 781001-03 TYPICAL APPLICATIONS RAISED REFLECTIVE PAVEMENT MARKERS
- 886001-01 DETECTOR LOOP INSTALLATIONS
- 886006-01 TYPICAL LAYOUT FOR DETECTION LOOPS



**FUNCTIONAL CLASSIFICATION**  
**OTHER PRINCIPAL ARTERIAL URBAN**  
**2009 ADT=12,500**  
**P.V.=85% S.U.=10% M.U.=5%**



FULL SIZE PLANS HAVE BEEN PREPARED USING STANDARD ENGINEERING SCALES. REDUCED SIZED PLANS WILL NOT CONFORM TO STANDARD SCALES. IN MAKING MEASUREMENTS ON REDUCED PLANS, THE ABOVE SCALES MAY BE USED.

J.U.L.I.E.  
 JOINT UTILITY LOCATION INFORMATION FOR EXCAVATION  
 1-800-892-0123  
 OR 811

**PROJECT ENGINEER: CRAIG REED**  
**UNIT CHIEF: BRAD DUNCAN**

**CONTRACT NO. 66746**

GROSS & NET LENGTH = 3655.00 FT. = 0.69 MILE

STATE OF ILLINOIS  
 DEPARTMENT OF TRANSPORTATION  
 DIVISION OF HIGHWAYS

SUBMITTED 10-15 20 09

James Rayson  
 DEPUTY DIRECTOR OF HIGHWAYS, REGION ENGINEER

December 4, 20 09  
Charles G. Ingersoll  
 ENGINEER OF DESIGN AND ENVIRONMENT

December 4, 20 09  
Christine M. Reed  
 DIRECTOR OF HIGHWAYS, CHIEF ENGINEER

**PRINTED BY THE AUTHORITY**  
**OF THE STATE OF ILLINOIS**

GENERAL NOTES  
(Revised January 23, 2009)

ALL SOILS DISTURBED BY ANY CONSTRUCTION OPERATION SHALL BE LEFT ON, AND INCORPORATED WITHIN, THE PROJECT LIMITS AND EXISTING RIGHT OF WAY.

THE THICKNESS OF HMA SHOWN ON THE PLANS IS THE NOMINAL THICKNESS. DEVIATIONS FROM THE NOMINAL THICKNESS WILL BE PERMITTED WHEN SUCH DEVIATIONS OCCUR DUE TO IRREGULARITIES IN THE EXISTING SURFACE OR BASE ON WHICH THE HMA IS PLACED.

THE HMA SURFACE OF ALL ALLEYS AND SIDE STREETS SHALL BE MADE NEATLY, IN A WORKMANLIKE MANNER, AND SHALL ACCURATELY CONFORM TO THE SHAPES AND DIMENSIONS SHOWN ON THE PLAN DETAILS. IF REQUIRED BY THE ENGINEER, THE CONTRACTOR SHALL BE REQUIRED TO SAW CUT THE HMA SURFACE TO CONFORM TO THE SHAPES AND DIMENSIONS SHOWN ON THE PLAN DETAILS. THIS WORK SHALL BE INCLUDED IN THE COST OF THE HMA SURFACE.

THE ENGINEER WILL BE THE SOLE JUDGE CONCERNING CURING TIME FOR THE VARIOUS HMA LIFTS.

FOR STABILIZATION, ALL TYPE III BARRICADES SHALL REQUIRE A MINIMUM OF FOUR SAND BAGS PER BARRICADE.

THE FINISHED EARTHWORK SHALL HAVE A VEGETATION SUSTAINING SOIL COVERING THE TOP FOUR INCHES IN AREAS TO BE SEEDDED OR SODDED. THE VEGETATION SUSTAINING SOIL REQUIRED WILL NOT BE PAID FOR SEPARATELY BUT SHALL BE INCLUDED IN THE COST OF EARTH EXCAVATION.

ANY REFERENCE TO A STANDARD IN THESE PLANS SHALL BE INTERPRETED TO MEAN THE EDITION AS INDICATED BY THE SUBNUMBER SHOWN IN THE LIST OF STANDARDS OR THE COPY INCLUDED IN THESE PLANS.

THE FOLLOWING RATES OF APPLICATION HAVE BEEN USED IN CALCULATING PLAN QUANTITIES:

GRANULAR MATERIALS	2.05	TONS / CU YD
BITUMINOUS MATERIALS (PRIME COAT)	0.08	GAL / SQ YD
FOR ADDITIONAL HMA LIFTS "FOG COAT"	0.05	GAL / SQ YD
AGGREGATE PRIME COAT	0.002	TONS / SQ YD
HMA RESURFACING	112	LBS / SQ YD / IN
SHORT TERM PAVEMENT MARKING	10	FT /100 FT OF APPLICATION
MIX FOR CRACKS, JTS & FLGWYS	0.0003	TONS / SQ YD
LEVEL BINDER (HAND METHOD)	0.0005	TONS / SQ YD

THE CONTRACTOR SHALL CONTACT JULIE AT LEAST 48 HOURS PRIOR TO EXCAVATION TO DETERMINE WHICH UTILITIES ARE IN THE AREA.

FOR ANY WATER VALVES REQUIRING ADJUSTMENT CONTACT:

CITY OF GENOA  
PUBLIC WORKS DIRECTOR  
333 EAST FIRST STREET  
GENOA, ILLINOIS 60135  
PHONE (815) 784-2271

STATE OF ILLINOIS  
DEPARTMENT OF TRANSPORTATION  
DISTRICT THREE

PREPARED BY: Ray Powell  
DISTRICT STUDIES & PLANS ENGINEER

DATE: 10/2/09

EXAMINED BY: [Signature]  
DISTRICT CONSTRUCTION ENGINEER

[Signature]  
DISTRICT MATERIALS ENGINEER

[Signature]  
DISTRICT OPERATIONS ENGINEER

FILE NAME =	USER NAME = verdinemi	DESIGNED -	REVISED -	<b>STATE OF ILLINOIS DEPARTMENT OF TRANSPORTATION</b>	<b>GENERAL NOTES</b>	F.A.P. RTE.	SECTION	COUNTY	TOTAL SHEETS	SHEET NO.	
es:\pe_work\PM\2007\VERDINEMI\66746.dwg	66746-ahtrcover.dgn	DRAWN -	REVISED -			553	(128)RS-4	DEKALB	13	2	
	PLOT SCALE = 58.0000' / IN.	CHECKED -	REVISED -			SCALE: SHEET NO. OF SHEETS STA. TO STA. FED. ROAD DIST. NO. [ILLINOIS] FED. AID PROJECT					
	PLOT DATE = Oct 01, 2009 - 02:46:59 PM	DATE -	REVISED -			CONTRACT NO. 66746					

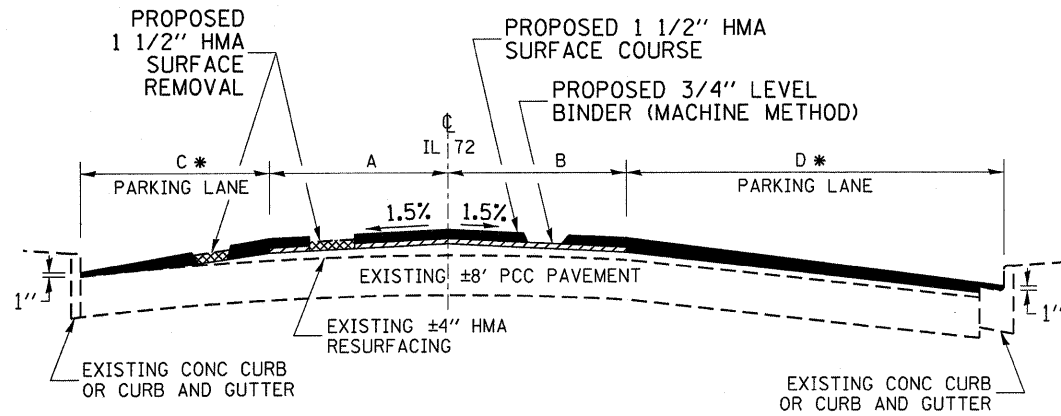
80% FED.  
20% STATE

SUMMARY OF QUANTITIES			URBAN
CODE NO.	ITEM	CONSTRUCTION CODE TYPE:	
		UNIT	I000 TOTAL ROADWAY
20200100	EARTH EXCAVATION	CU YD	25
* 25200110	SODDING, SALT TOLERANT	SQ YD	297
40600100	BITUMINOUS MATERIALS (PRIME COAT)	GALLON	2557
40600300	AGGREGATE (PRIME COAT)	TON	41
40600400	MIXTURE FOR CRACKS, JOINTS, AND FLANGEWAYS	TON	5.2
40600535	LEVELING BINDER (HAND METHOD), N70	TON	8.7
40600635	LEVELING BINDER (MACHINE METHOD), N70	TON	448
40600895	CONSTRUCTING TEST STRIP	EACH	1
40600990	TEMPORARY RAMP	SQ YD	450
40603340	HOT-MIX ASPHALT SURFACE COURSE, MIX "D", N70	TON	1625
40800050	INCIDENTAL HOT-MIX ASPHALT SURFACING	TON	248
42400100	PORTLAND CEMENT CONCRETE SIDEWALK 4 INCH	SQ FT	7980
42400800	DETECTABLE WARNINGS	SQ FT	504
44000155	HOT-MIX ASPHALT SURFACE REMOVAL, 1 1/2"	SQ YD	20290
44000600	SIDEWALK REMOVAL	SQ FT	7980
44001900	COMBINATION CURB AND GUTTER REMOVAL (SPECIAL)	FOOT	1202
60611600	COMBINATION CONCRETE CURB AND GUTTER, (SPECIAL)	FOOT	1202
67000400	ENGINEER'S FIELD OFFICE, TYPE A	CAL MO	2
67100100	MOBILIZATION	L SUM	1
70102620	TRAFFIC CONTROL AND PROTECTION, STANDARD 701501	L SUM	1
70102640	TRAFFIC CONTROL AND PROTECTION, STANDARD 701801	L SUM	1
70106800	CHANGEABLE MESSAGE SIGN	CAL MO	2
70300100	SHORT-TERM PAVEMENT MARKING	FOOT	1098
70300625	TEMPORARY PAINT PAVEMENT MARKING LINE 4"	FOOT	900
70300635	TEMPORARY PAINT PAVEMENT MARKING LINE 6"	FOOT	6258
70300640	TEMPORARY PAINT PAVEMENT MARKING LINE 8"	FOOT	244
70300645	TEMPORARY PAINT PAVEMENT MARKING LINE 12"	FOOT	1936
70300660	TEMPORARY PAINT PAVEMENT MARKING LINE 24"	FOOT	774
70301000	WORK ZONE PAVEMENT MARKING REMOVAL	SQ FT	368
* 78000200	THERMOPLASTIC PAVEMENT MARKING - LINE 4"	FOOT	1760
* 78000400	THERMOPLASTIC PAVEMENT MARKING - LINE 6"	FOOT	3129
* 78000500	THERMOPLASTIC PAVEMENT MARKING - LINE 8"	FOOT	122
* 78000600	THERMOPLASTIC PAVEMENT MARKING - LINE 12"	FOOT	968
* 78000650	THERMOPLASTIC PAVEMENT MARKING - LINE 24"	FOOT	387
* 78100100	RAISED REFLECTIVE PAVEMENT MARKER	EACH	46
78300200	RAISED REFLECTIVE PAVEMENT MARKER REMOVAL	EACH	24

80% FED.  
20% STATE

SUMMARY OF QUANTITIES			URBAN
CODE NO.	ITEM	CONSTRUCTION CODE TYPE:	
		UNIT	I000 TOTAL ROADWAY
88600100	DETECTOR LOOP, TYPE I	FOOT	716
X0325702	NIGHTTIME WORK ZONE LIGHTING	L SUM	1
X6025800	MANHOLES TO BE ADJUSTED WITH NEW TYPE 1 FRAME, CLOSED LID, SPECIAL	EACH	12

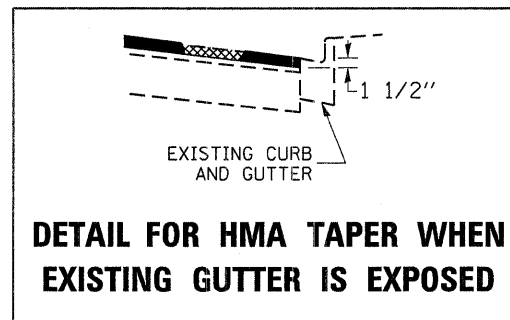
\* SPECIALTY ITEMS



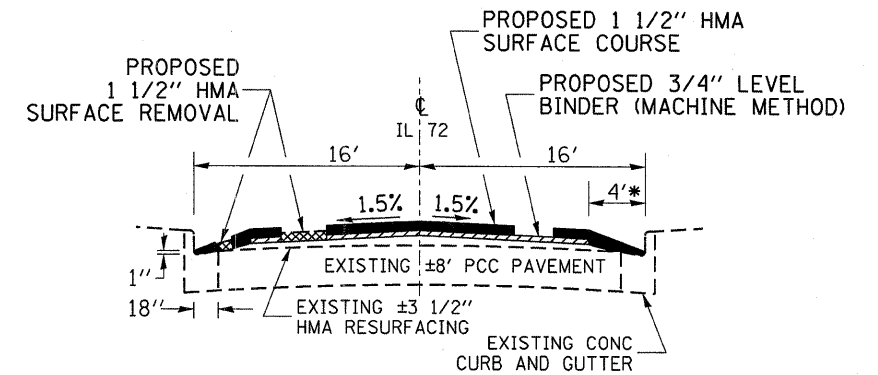
**TYPICAL SECTION**

STA 6+16 TO STA 22+14

\* TAPER HMA SURFACE COURSE FROM 2 1/4" TO 1"



**DETAIL FOR HMA TAPER WHEN EXISTING GUTTER IS EXPOSED**



**TYPICAL SECTION**

STA 22+14 TO STA 40+78

PAVEMENT WIDTH TABLE				
LOCATION STA TO STA	C FEET	A FEET	B FEET	D FEET
4+23 TO 5+40	13	12	12	0
5+40 TO 9+19	13	12	12	13
9+19 TO 12+46	13	12	12	21
12+46 TO 15+10	13 TO 10	12 TO 11	12 TO 11	32.5 TO 30
15+10 TO 17+74	10 TO 9	11 TO 12	11 TO 12	30 TO 21
17+74 TO 19+14	9 TO 8	12	12	21 TO 20
19+14 TO 22+14	8	12 TO 11	12	20 TO 16

**MIXTURE TABLE**

	HMA SURFACE	HMA LEVEL BINDER	INCIDENTAL HMA SURFACE
PG GRADE	PG64-22	PG64-22	PG64-22
MAX % RAP ALLOWABLE**	10%	15%	10%
DESIGN AIR VOIDS	4.0% @ N70	4.0% @ N70	4.0% @ N70
MIXTURE COMPOSITION	IL 12.5 OR IL 9.5	IL 9.5	IL 12.5 OR IL 9.5
FRICTION AGGREGATE	MIXTURE D		MIXTURE D
DENSITY TEST METHOD	CORRELATION	SATISFACTION OF ENGINEER	SATISFACTION OF ENGINEER

\* MATERIAL SHALL BE COMPACTED TO 93.0-97.4 PERCENT OF THE MAXIMUM THEORETICAL DENSITY, EXCEPT THAT WHEN PLACED AS FIRST LIFT ON AN UNIMPROVED SUBGRADE THE MINIMUM PERCENT COMPACTION SHALL BE 92.0 PERCENT. THE MAXIMUM THEORETICAL DENSITY SHALL BE DETERMINED FROM THE MOVING AVERAGE AS SPECIFIED IN THE QC/QA SPECIFICATION.  
 \*\* IF RAP OPTION IS SELECTED, THE ASPHALT CEMENT GRADE MAY NEED TO BE ADJUSTED. THIS WILL BE DETERMINED BY THE ENGINEER.

FILE NAME =	USER NAME = verdinml	DESIGNED -	REVISED -	<b>STATE OF ILLINOIS DEPARTMENT OF TRANSPORTATION</b>	<b>TYPICAL SECTIONS</b>			F.A.P. RTE.	SECTION	COUNTY	TOTAL SHEETS	SHEET NO.
ct:\pw\work\VPWIDOT\VERDINML\d0104085\d36746-sht-cover.dgn	DRAWN -	REVISED -	553					(128)RS-4	DEKALB	13	4	
PLOT SCALE = 50.0000' / IN.	CHECKED -	REVISED -	CONTRACT NO. 66746									
PLOT DATE = Oct 05, 2009 - 02:29:50 PM	DATE -	REVISED -	SCALE: NONE		SHEET NO.	OF	SHEETS	STA.	TO STA.	ILLINOIS FED. AID PROJECT		

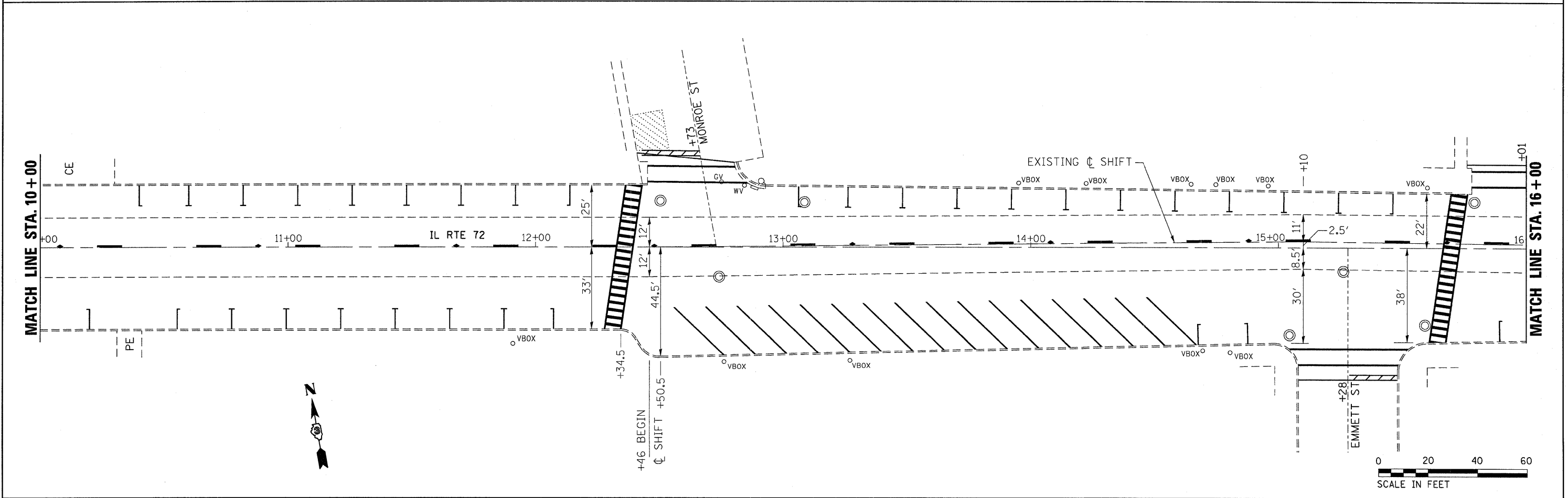
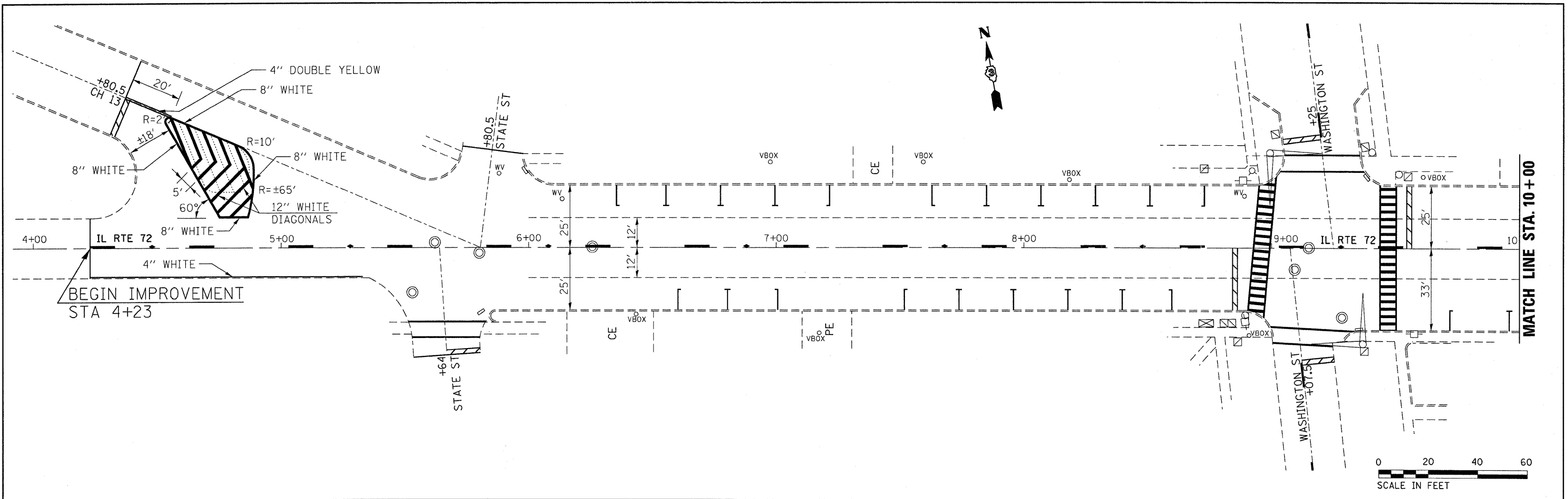
MAINLINE										
LOCATION	LENGTH	AVERAGE WIDTH	BIT MAT'L PR CT	AGG PRIME COAT	MIX CR, JT, & FLGWY	LEV BIND (HM) N70	LEV BIND (MM) N70	HMA SURF CSE "D", N70	HMA SURF REM 1 1/2"	TEMP RAMP
STA TO STA	FOOT	FOOT	GAL	TON	TON	TON	TON	TON	SQ YD	SQ YD
4+23 TO 5+40	117	37	63	1.0	0.1	0.2	13	44	481	20.6
5+40 TO 9+19	379	50	274	4.2	0.6	1.1	42	200	2106	
9+19 TO 12+46	327	58	274	4.2	0.6	1.1	37	203	2107	
12+46 TO 15+10	264	65.75	251	3.9	0.6	1.0	30	188	1929	
15+10 TO 17+74	264	58	221	3.4	0.5	0.9	30	164	1701	
17+74 TO 19+14	140	53	107	1.6	0.2	0.4	16	79	824	
19+14 TO 22+14	300	49.5	215	3.3	0.5	0.8	34	156	1650	
22+14 TO 40+78	1864	32	862	13.3	2.0	3.3	209	592	6628	17.8
<b>TOTALS</b>			<b>2265</b>	<b>35</b>	<b>5.2</b>	<b>8.7</b>	<b>409</b>	<b>1625</b>	<b>17426</b>	<b>38</b>

SIDESTREET SCHEDULE												
MAINLINE STATION	SIDE	LOCATION	TYPE	LENGTH FT	WIDTH FT	AREA SQ YD	HMA SURF REM 1 1/2" SQ YD	LEVEL BINDER (MM) TONS	INC HMA SURF TONS	AGG PRIME COAT TONS	TEMP RAMPS SQ YD	BIT MAT PR CT GALLON
5+64	RT	STATE ST	HMA	18	27	60	60		5	0.1	15.0	5
5+80.5	LT	CH 13	HMA	91	32	361	361		30	0.7	17.8	29
5+80.5	LT	STATE ST	HMA	14	25	49	49		4	0.1	13.9	4
9+07.5	RT	WASHINGTON ST	HMA	85	24	228	228	10	19	0.5	13.3	30
9+25	LT	WASHINGTON ST	HMA	85	48	391	391	10	36	0.8	26.7	51
12+73	LT	MONROE ST	HMA	11	50	48	48		4	0.1	27.8	4
15+28	RT	EMMETT ST	HMA	15	40	74	74		6	0.1	22.2	6
16+01	LT	EMMETT ST	HMA	12	50	64	64		5	0.1	27.8	5
18+62.5	RT	GENOA ST	HMA	17	32	71	71		6	0.1	17.8	6
18+83	LT	GENOA ST	HMA	15	44	77	77		6	0.2	24.4	6
21+75.5	LT	SYCAMORE ST	HMA	91	32	336	336	10	30	0.7	17.8	44
21+75.5	RT	SYCAMORE ST	HMA	83	32	309	309	9	28	0.6	17.8	40
25+35	LT	LOCUST ST	HMA	18	34	83	83		7	0.2	18.9	7
25+35	RT	LOCUST ST	HMA	18	32	76	76		6	0.2	17.8	6
28+95	LT	ALLEY	HMA	17	12	39	39		3	0.1	6.7	3
30+91	LT	STOTT ST	HMA	20	36	89	89		7	0.2	20.0	7
30+91	RT	STOTT ST	HMA	19	36	83	83		7	0.2	20.0	7
32+84	LT	ALLEY	HMA	17	12	39	39		3	0.1	6.7	3
34+77	LT	BROWN ST	HMA	25	34	109	109		9	0.2	18.9	9
34+77	RT	BROWN ST	HMA	20	32	81	81		7	0.2	17.8	6
37+09	LT	ALLEY	HMA	17	15	39	39		3	0.1	8.3	3
38+79	RT	HADSALL ST	HMA	20	32	76	76		6	0.2	17.8	6
39+02	LT	HADSALL ST	HMA	17	30	82	82		7	0.2	16.7	7
<b>TOTALS</b>							<b>2864</b>	<b>39</b>	<b>248</b>	<b>6</b>	<b>412</b>	<b>292</b>

SIDEWALK SCHEDULE FOR NEW RAMP INSTALLATION							
LOCATION SIDESTREET QUAD	PCC SIDEWALK 4" SQ FT	DETECTABLE WARNINGS SQ FT	CC&G (SPEC) FOOT	SIDEWALK REMOVAL SQ FT	CC&G REMOV (SPEC) FOOT	SOD, SALT TOLERANT SQ YD	EARTH EXCAV CU YD
CH 13	NO EXISTING SIDEWALK						
STATE ST							
SW	60	8		60		7	0.6
NW	60	8	16	60	16	7	0.6
SE	60	8		60			
NE	60	8	16	60	16	7	0.6
WASHINGTON ST							
SW	180	16	36	180	36	7	0.6
NW	180	16	36	180	36	7	0.6
SE	480	16	36	480	36		
NE	180	16	36	180	36	7	0.6
MONROE ST							
SOUTH	120	8	36	120	36	7	0.6
NW	480	16	36	480	36		
NE	480	8	36	480	36		
EMMETT ST							
SW	240	8	16	240	16		
SE	480	16	36	480	36		
NW	480	16	36	480	36		
NE	480	8	36	480	36		
GENOA ST							
SW	480	16	36	480	36	3	0.3
NW	480	16	36	480	36		
SE	120	16	36	120	36	15	1.2
NE	240	8	16	240	16		
SYCAMORE ST							
NW	480	16	36	480	36	3	0.3
SW	180	16	36	180	36		
NE	120	16	36	120	36	15	1.2
SE	180	16	36	180	36	7	0.6
LOCUST ST							
NW	120	16	43	120	43	15	1.2
SW	120	16	43	120	43	15	1.2
NE	120	16	43	120	43	15	1.2
SE	120	16	43	120	43	15	1.2
STOTT ST							
NW	120	16	43	120	43	15	1.2
SW	120	16	43	120	43	15	1.2
NE	120	16	43	120	43	15	1.2
SE	120	16	43	120	43	15	1.2
BROWN ST							
NW	60	8	16	60	16	7	0.6
SW	60	8	16	60	16	7	0.6
NE	60	8	16	60	16	7	0.6
SE	60	8	16	60	16	7	0.6
HADSALL ST							
NW	120	16	43	120	43	15	1.2
SW	120	16	43	120	43	15	1.2
SE	60	8	16	60	16	7	0.6
NE	180	8	16	180	16	20	1.8
<b>TOTALS</b>	<b>7980</b>	<b>504</b>	<b>1202</b>	<b>7980</b>	<b>1202</b>	<b>297</b>	<b>25</b>

PAVEMENT MARKINGS																
LOCATION IL RTE 72	THERMOPLASTIC							RAISED	RAISED	TEMPORARY PAINT					SHORT TERM (3 APP)	WORK ZONE PAVT MARK REM SQ FT
	4"		6"		8"	12"	24"	REFLECTIVE	REFL	(2 APPLICATIONS)						
	YELLOW	WHITE	YELLOW	WHITE	WHITE	WHITE	WHITE	PAVT MARK	PAVT	DOES NOT INCLUDE PARKING						
	NO PASS ZONE	EDGE & PARK	CENTER LINE	CROSS WALKS	ISLAND	ISLAND & CROSSWALKS	STOP BARS	TWO-WAY AMBER	MARK REMOV	4"	6"	8"	12"	24"		
STATION TO STATION	FOOT	FOOT	FOOT	FOOT	FOOT	FOOT	FOOT	EACH	EACH	FOOT	FOOT	FOOT	FOOT	FOOT	FOOT	FOOT
4+23 TO 6+00		110	50					2		220	100				53	18
STATE ST RT				58				13.5			116			27.0		
CH 13 LT	40					122		149		80		244	298	32.0		
STATE ST LT	NO PAVEMENT MARKINGS															
6+00 TO 9+25		192	80	108		108		25.0	4		376		216	50.0	98	33
WASHINGTON ST RT			20	58				13.0			156			26.0		
WASHINGTON ST LT			20	64				15.0			168			30.0		
9+25 TO 12+50		194	80	235		231		25.0	4		630		462	50.0	98	33
MONROE ST LT				76				23.4			152			46.8		
12+50 TO 15+80		584	80	121		120			4		402		240		99	33
EMMETT ST RT				88				20.0			176			40.0		
EMMETT ST LT				96							192					
15+80 TO 18+80		186	80	113		114			4		386		228		90	30
GENOA ST RT				74				16.1			148			32.2		
GENOA ST LT				89				22.0			178			44.0		
18+80 TO 21+75		154	70	100		99		28.2	4		340		198	56.4	89	30
SYCAMORE ST LT			20	68				16.0			176			32.0		
SYCAMORE ST RT			20	82				16.6			204			33.2		
21+75 TO 25+35			90	80		81		16.0	5	5	340		162	32.0	108	36
LOCUST ST LT				72				16.3			144			32.6		
LOCUST ST RT				67				16.0			134			32.0		
25+35 TO 30+91			140						7	7	280				167	56
STOTT ST LT				73				17.5			146			35.0		
STOTT ST RT				74				17.5			148			35.0		
30+91 TO 34+77			100						5	5	200				116	39
BROWN ST LT				72				16.0			144			32.0		
BROWN ST RT				66				12.0			132			24.0		
34+77 TO 39+00	122		110	66		66			5	5	244		132		127	42
HADSALL ST RT				63				14.8			126			29.6		
HADSALL ST LT				66				11.2			132			22.4		
39+00 TO 40+78	178		40						2	2	356		80		53	18
SUBTOTALS	340	1420	1000	2129	122	968	387	46	24	900	6258	244	1936	774	1098	368
TOTALS	1760		3129		122	968	387	46	24	900	6258	244	1936	774	1098	368

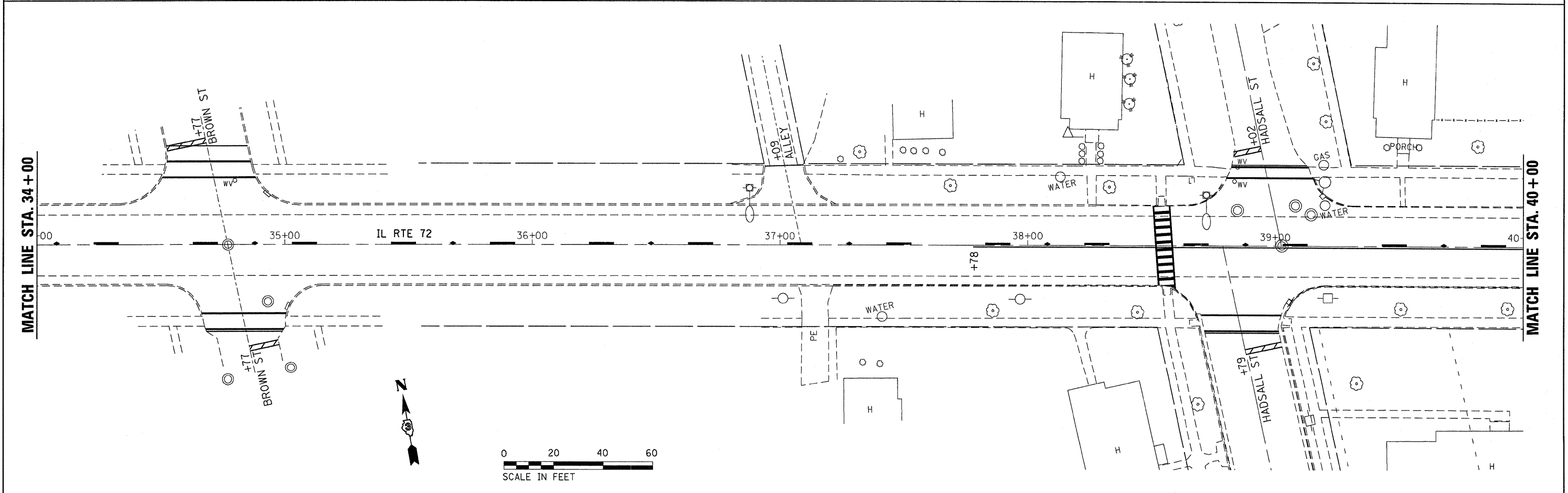
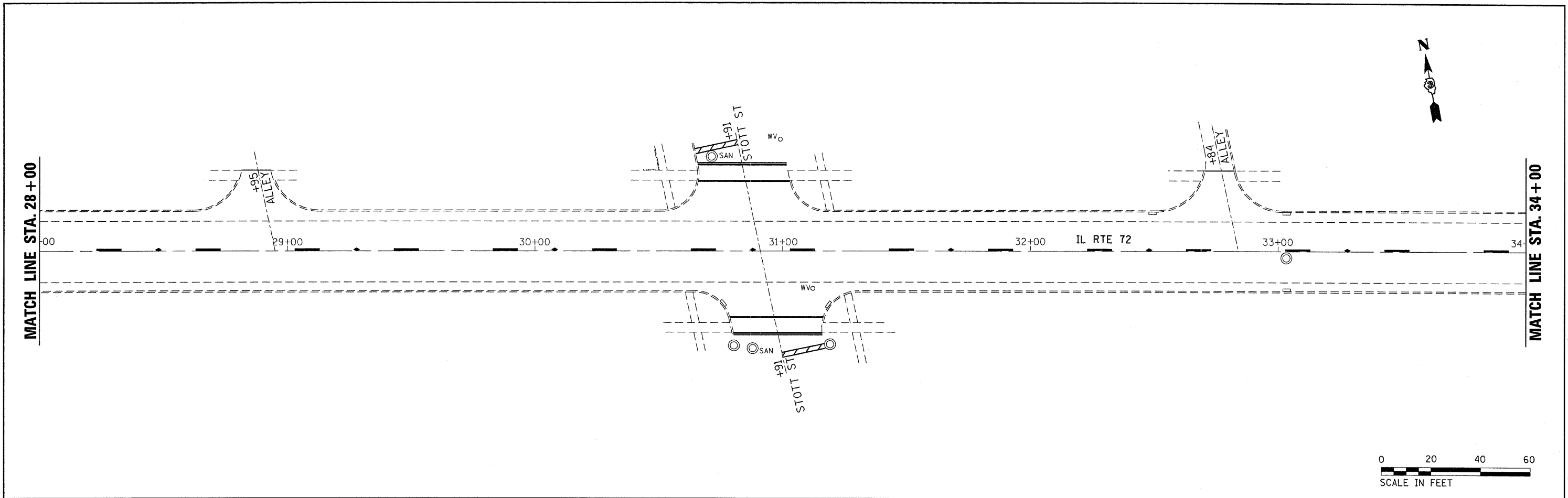
FILE NAME =	USER NAME = verdinml	DESIGNED -	REVISED -	<b>STATE OF ILLINOIS DEPARTMENT OF TRANSPORTATION</b>	<b>SCHEDULES OF QUANTITIES</b>				F.A.P. RTE.	SECTION	COUNTY	TOTAL SHEETS	SHEET NO.
ct:\pw\work\PWIDOT\VERDINML\d0104085\d366746-shr-cover.dgn		DRAWN -	REVISED -		553	(128)RS-4	DEKALB	13	6				
PLOT SCALE = 50.0000' / IN.		CHECKED -	REVISED -		SCALE: NONE SHEET NO. 2 OF 2 SHEETS STA. TO STA.				CONTRACT NO. 66746				
PLOT DATE = Oct 05, 2009 - 02:31:03 PM		DATE -	REVISED -		ILLINOIS FED. AID PROJECT								



FILE NAME =	USER NAME = verdinml	DESIGNED -	REVISED -	<b>STATE OF ILLINOIS DEPARTMENT OF TRANSPORTATION</b>	<b>PLAN VIEW</b>		F.A.P. RTE. 553	SECTION (128)RS-4	COUNTY DEKALB	TOTAL SHEETS 13	SHEET NO. 7	
ct:\pw\work\VPWIDOT\VERDINML\d0104085\d366746-sht-cover.dgn		DRAWN -	REVISED -		SCALE:	SHEET NO. 1 OF 4 SHEETS	STA. TO STA.	CONTRACT NO. 66746				
		CHECKED -	REVISED -		ILLINOIS FED. AID PROJECT							
		DATE -	REVISED -									



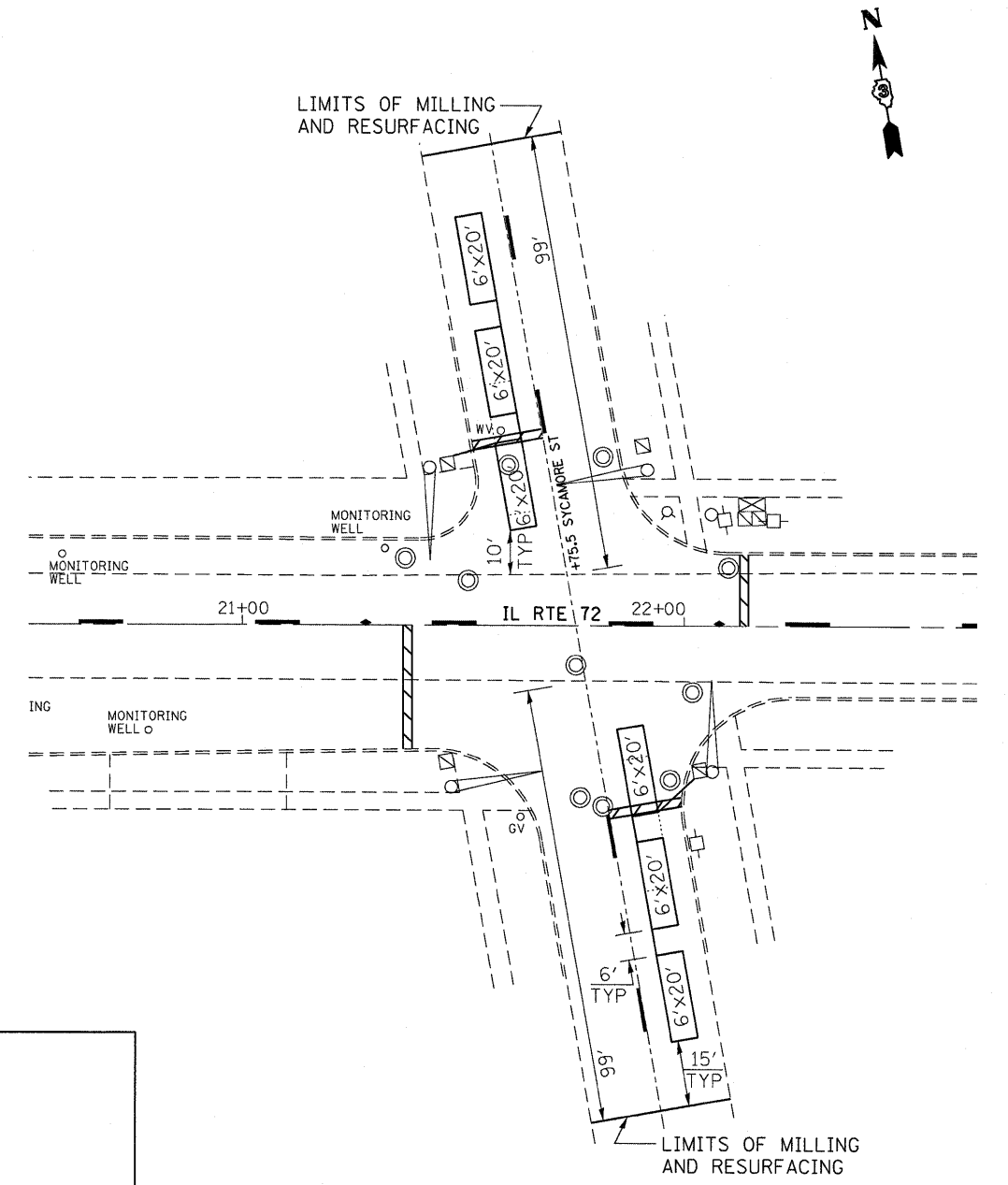
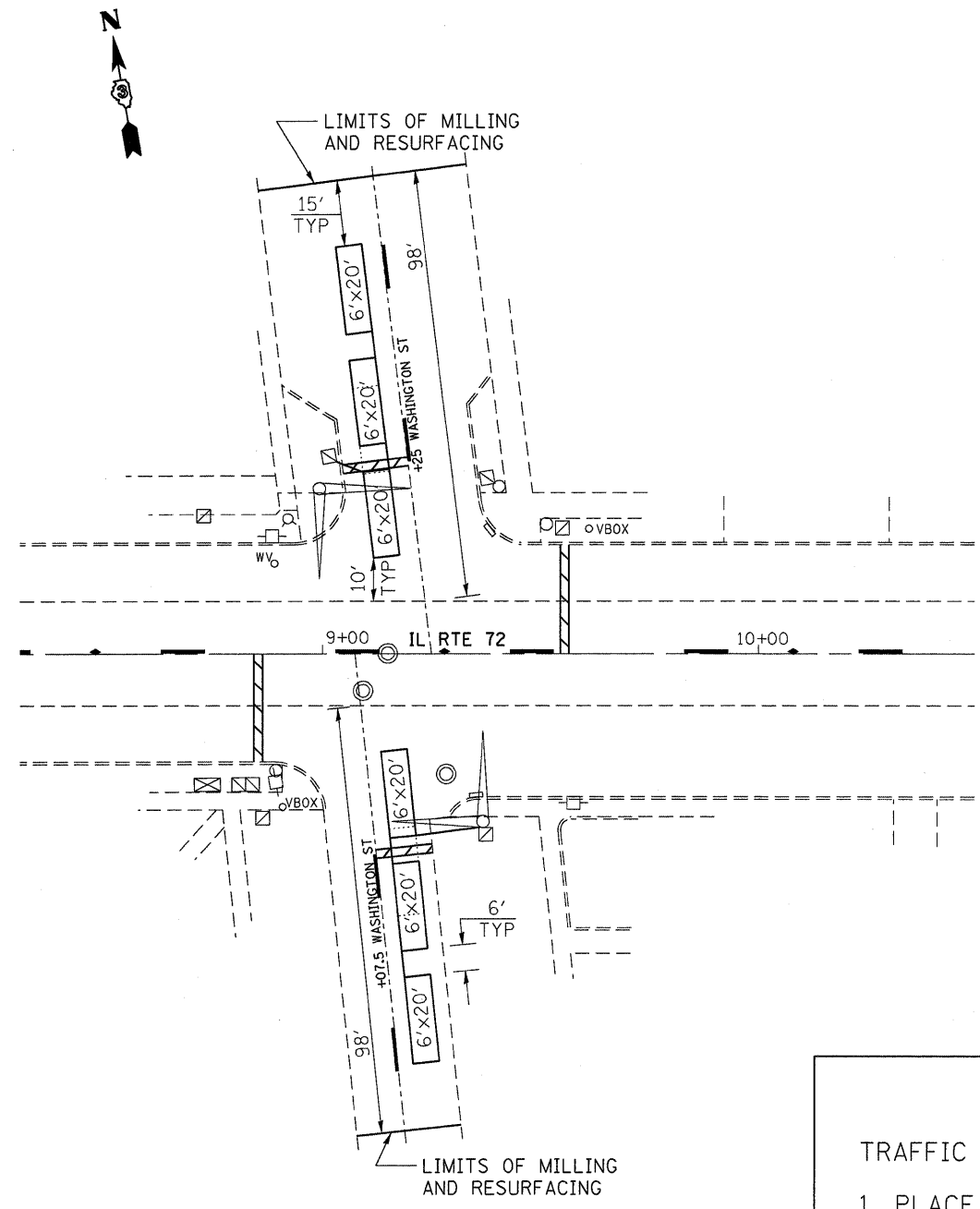




FILE NAME = c:\pw\work\VPWIDOT\VERDINEM\0104005\d36746-shr-cover.dgn	USER NAME = verdinml	DESIGNED -	REVISED -	<b>STATE OF ILLINOIS DEPARTMENT OF TRANSPORTATION</b>	<b>PLAN VIEW</b>		F.A.P. RTE. 553	SECTION (128)RS-4	COUNTY DEKALB	TOTAL SHEETS 13	SHEET NO. 9		
	PLOT SCALE = 20.0000' / IN.	DRAWN -	REVISED -		SCALE:	SHEET NO. 3 OF 4 SHEETS	STA. TO STA.	CONTRACT NO. 66746					
	PLOT DATE = Oct 05, 2009 - 02:20:18 PM	CHECKED -	REVISED -		ILLINOIS FED. AID PROJECT								
		DATE -	REVISED -										

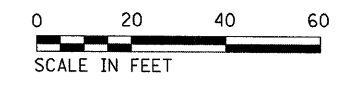
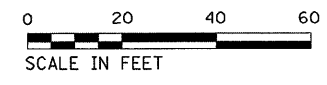


DETECTOR LOOP, TYPE I	
WASHINGTON ST NORTH	175 FT
WASHINGTON ST SOUTH	183 FT
SYCAMORE ST NORTH	179 FT
SYCAMORE ST SOUTH	179 FT
TOTAL	716 FT



TRAFFIC SIGNAL GENERAL NOTES

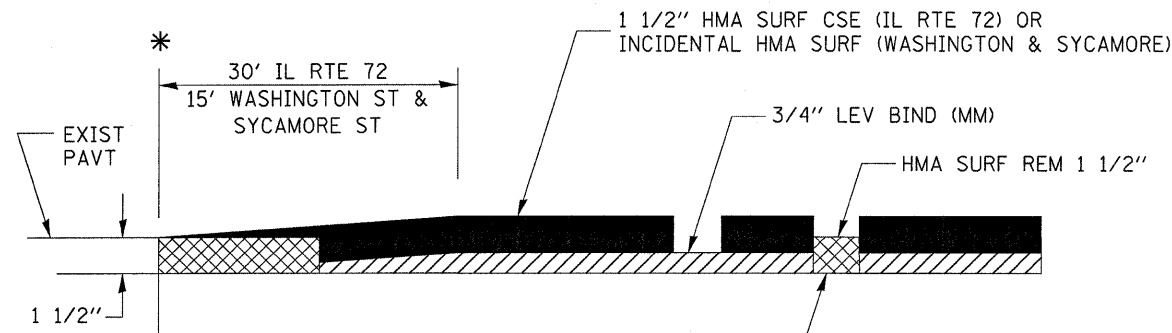
1. PLACE DETECTOR LOOPS IN BINDER.
2. DETECTOR LOOPS SHALL HAVE FOUR TURNS.
3. SAW CUT EXISTING DETECTOR LOOPS TO BE ABANDONED.
4. THE DEPARTMENT OF TRANSPORTATION (815-434-8506) SHALL BE NOTIFIED AT LEAST 72 HOURS PRIOR TO THE LAYOUT OF THE DETECTOR LOOPS.



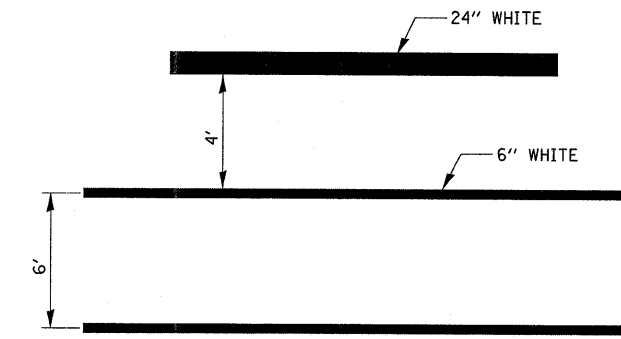
### IL ROUTE 72 AND WASHINGTON ST INTERSECTION

### IL ROUTE 72 AND SYCAMORE ST INTERSECTION

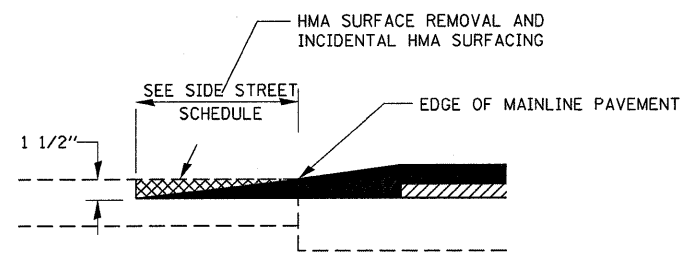
FILE NAME =	USER NAME = verdinml	DESIGNED -	REVISED -	<b>STATE OF ILLINOIS DEPARTMENT OF TRANSPORTATION</b>	<b>TRAFFIC SIGNALS WASHINGTON ST &amp; SYCAMORE ST</b>			F.A.P. RTE.	SECTION	COUNTY	TOTAL SHEETS	SHEET NO.
ct:\pw\work\VPWIDOT\VERDINEM\ad0104085\36746-sht-cover.dgn	36746-sht-cover.dgn	DRAWN -	REVISED -		553	(128)RS-4	DEKALB	13	11			
PLOT SCALE = 20.0000' / IN.		CHECKED -	REVISED -		SCALE: SHEET NO. OF SHEETS STA. TO STA.			CONTRACT NO. 66746				
PLOT DATE = Oct 05, 2009 - 02:28:59 PM		DATE -	REVISED -		ILLINOIS FED. AID PROJECT							



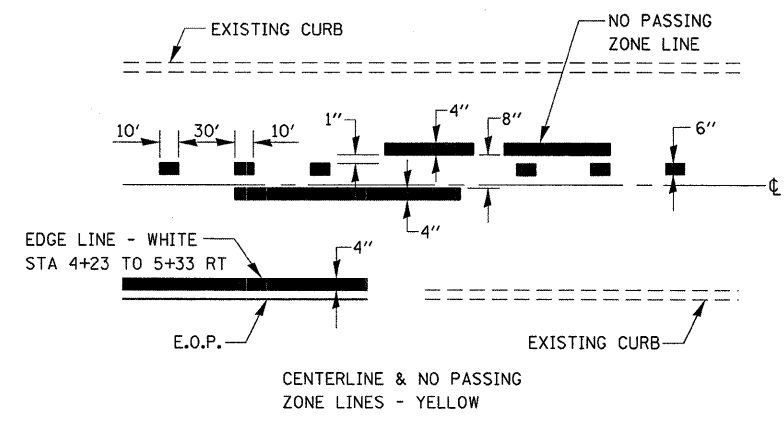
**TAPER DETAIL AT**  
 \* STA 4+23 (BEGINNING)  
 \* STA 40+78 (ENDING)  
 WASHINGTON ST  
 SYCAMORE ST



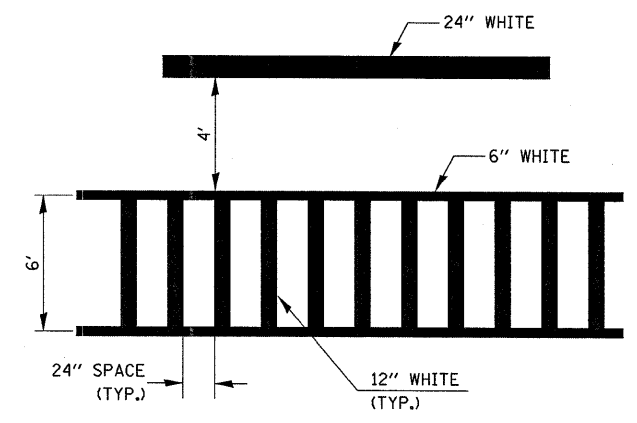
**TYPICAL SPACING DETAIL FOR  
 CROSSWALKS AND STOP BARS  
 ON SIDE STREETS**



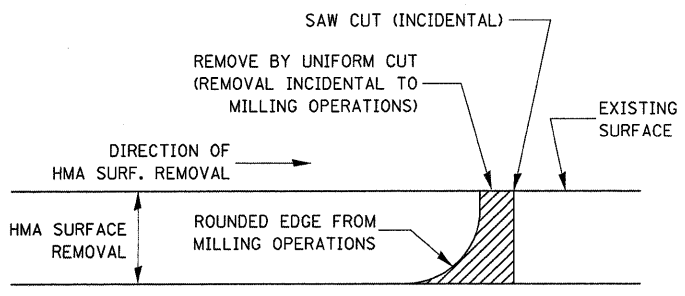
**DETAIL AT SIDE STREETS**



**PAVEMENT MARKING**

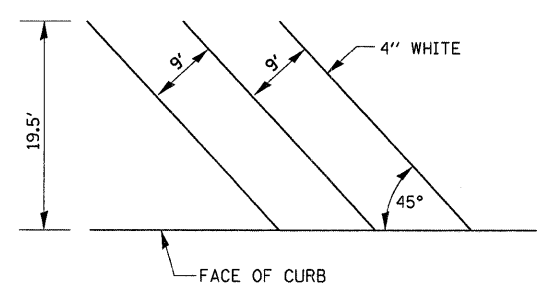


**TYPICAL SPACING DETAIL FOR  
 CROSSWALKS AND STOP BARS  
 ON IL RTE 72**

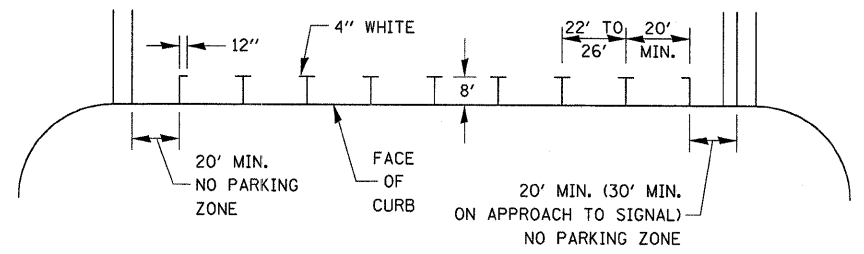


**NOTE:**  
 WHEN MILLING OPERATIONS PRODUCE A ROUNDED EDGE,  
 THEN A SAW CUT SHALL BE USED TO MANUFACTURE  
 A PERPENDICULAR EDGE AS SHOWN IN THE DETAIL.  
 THE ENGINEER SHALL BE THE SOLE JUDGE  
 CONCERNING THE USE OF THIS DETAIL

**HMA DETAIL AT BUTT JOINTS**

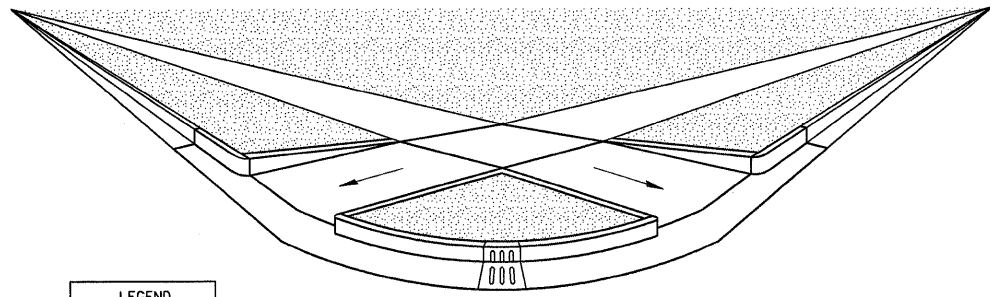


**TYPICAL DIAGONAL PARKING  
 SPACE MARKINGS**



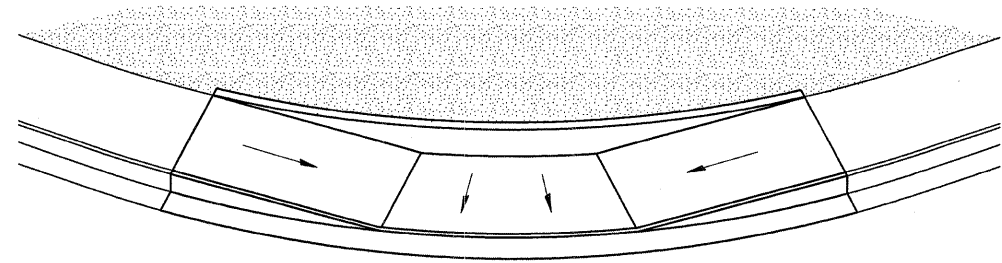
**TYPICAL PARALLEL PARKING  
 SPACE MARKINGS**

FILE NAME =	USER NAME = verdinml	DESIGNED -	REVISED -	<b>STATE OF ILLINOIS        DEPARTMENT OF TRANSPORTATION</b>	<b>DETAILS</b>		F.A.P. RTE.	SECTION	COUNTY	TOTAL SHEETS	SHEET NO.	
ct:\pw\work\VPWIDOT\VERDINML\d0104085\d366746-sht-cover.dgn		DRAWN -	REVISED -		SCALE: NONE	SHEET NO. 1 OF 2 SHEETS	STA.	553	(128)RS-4	DEKALB	13	12
		CHECKED -	REVISED -				TO STA.					
		DATE -	REVISED -									
										CONTRACT NO. 66746		
										ILLINOIS FED. AID PROJECT		



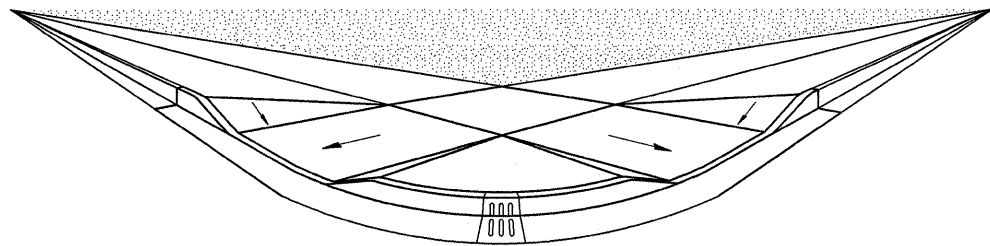
LEGEND  
 GRASS

ADA SIDEWALK ACCESSIBILITY RAMPS  
 PERSPECTIVE WITH SIDE CURBS



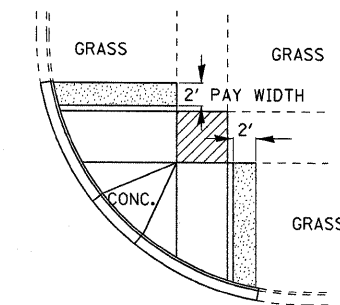
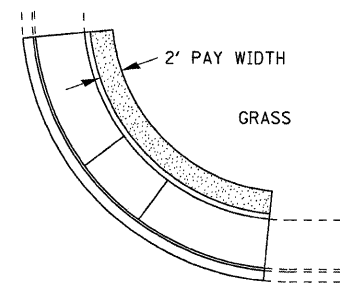
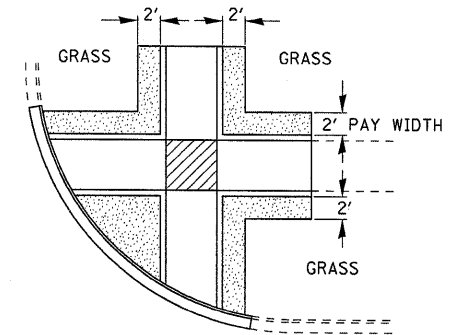
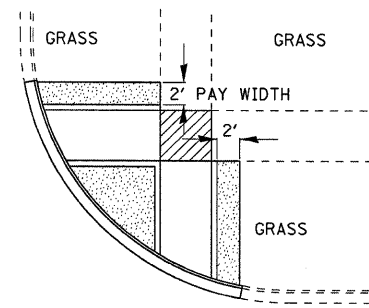
LEGEND  
 GRASS

ADA SIDEWALK ACCESSIBILITY RAMPS  
 DUAL DIRECTION RAMP PERSPECTIVE



LEGEND  
 GRASS

ADA SIDEWALK ACCESSIBILITY RAMPS  
 PERSPECTIVE WITH SIDE FLARES



LEGEND  
 GRASS

ADA SIDEWALK ACCESSIBILITY RAMPS  
 PERSPECTIVE WITH SIDE CURBS

ADA SIDEWALK ACCESSIBILITY RAMPS  
 TYPICAL SODDING DETAILS FOR SIDEWALK RAMPS

LEGEND  
 SOD

FILE NAME =	USER NAME = verdinemi	DESIGNED -	REVISED -
ct:\pw_work\VPWIDOT\VERDINEMI\d0104085\d06746-sht-cover.dgn		DRAWN -	REVISED -
		CHECKED -	REVISED -
		DATE -	REVISED -

STATE OF ILLINOIS  
 DEPARTMENT OF TRANSPORTATION

DETAILS

SCALE: NONE SHEET NO. 2 OF 2 SHEETS STA. TO STA.

F.A.P. RTE.	SECTION	COUNTY	TOTAL SHEETS	SHEET NO.
553	(128)RS-4	DEKALB	13	13
CONTRACT NO. 66746			ILLINOIS FED. AID PROJECT	