

F.A.P. RTE.	SECTION	COUNTY	TOTAL SHEETS	SHEET NO.
553	(128)RS-4	DEKALB	13	1
		ILLINOIS	CONTRACT NO. 66746	

- 1 COVER SHEET
- 2 GENERAL NOTES
- 3 SUMMARY OF QUANTITIES
- 4 TYPICAL SECTIONS
- 5-6 SCHEDULES OF QUANTITIES
- 7-10 PLAN SHEETS
- 11 DETECTOR LOOP DETAILS
- 12-13 DETAILS

STATE OF ILLINOIS  
DEPARTMENT OF TRANSPORTATION  
DIVISION OF HIGHWAYS

# PROPOSED HIGHWAY PLANS

**FAP ROUTE 553 (IL 72)  
SECTION (128)RS-4  
PROJECT ACF-0553(152)  
3P MILLING & RESURFACING  
DEKALB COUNTY**

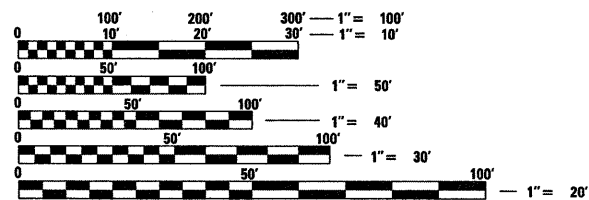
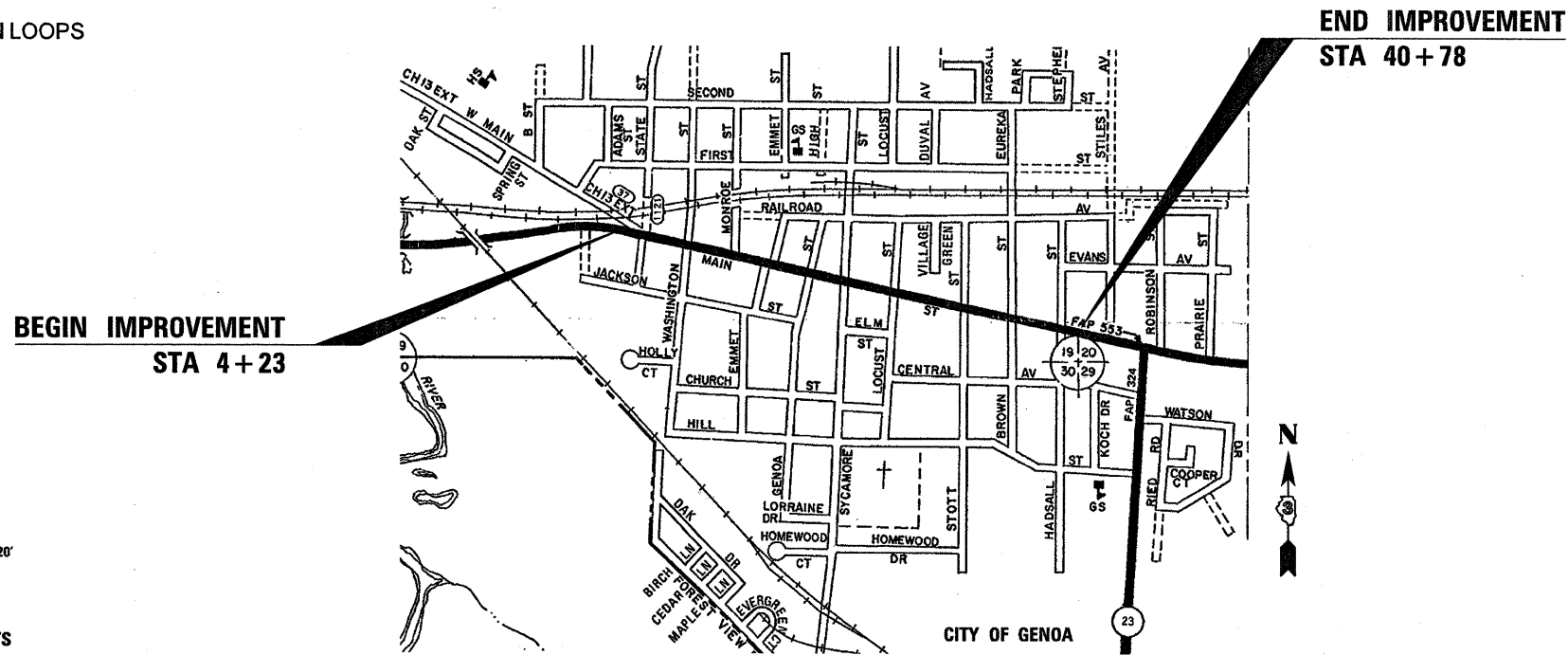
C-93-032-08

### STANDARDS

- 000001-05 STANDARD SYMBOLS, ABBREVIATIONS AND PATTERNS
- 424001-05 CURB RAMPS FOR SIDEWALK
- 602401-02 MANHOLE, TYPE A
- 604001-03 FRAME AND LIDS, TYPE 1
- 606001-04 CONCRETE CURB TYPE B AND COMBINATION CONCRETE CURB AND GUTTER
- 701001-02 OFF-ROAD OPERATIONS 2L, 2W, MORE THAN 15' (4.5 m) AWAY
- 701006-03 OFF-ROAD OPERATIONS 2L, 2W, 15' (4.5 m) TO 24" (600 mm) FROM PAVEMENT EDGE
- 701011-02 OFF-ROAD MOVING OPERATIONS 2L, 2W, DAY ONLY
- 701301-03 LANE CLOSURE, 2L, 2W, SHORT TIME OPERATIONS
- 701311-03 LANE CLOSURE, 2L, 2W, MOVING OPERATIONS - DAY ONLY
- 701501-05 URBAN LANE CLOSURE, 2L, 2W, UNDIVIDED
- 701801-04 LANE CLOSURE, MULTILANE 1W OR 2W CROSSWALK OR SIDEWALK CLOSURE
- 701901-01 TRAFFIC CONTROL DEVICES
- 781001-03 TYPICAL APPLICATIONS RAISED REFLECTIVE PAVEMENT MARKERS
- 886001-01 DETECTOR LOOP INSTALLATIONS
- 886006-01 TYPICAL LAYOUT FOR DETECTION LOOPS



**FUNCTIONAL CLASSIFICATION**  
OTHER PRINCIPAL ARTERIAL URBAN  
2009 ADT=12,500  
P.V.=85% S.U.=10% M.U.=5%



FULL SIZE PLANS HAVE BEEN PREPARED USING STANDARD ENGINEERING SCALES. REDUCED SIZED PLANS WILL NOT CONFORM TO STANDARD SCALES. IN MAKING MEASUREMENTS ON REDUCED PLANS, THE ABOVE SCALES MAY BE USED.

J.U.L.I.E.  
JOINT UTILITY LOCATION INFORMATION FOR EXCAVATION  
1-800-892-0123  
OR 811

PROJECT ENGINEER: CRAIG REED  
UNIT CHIEF: BRAD DUNCAN

CONTRACT NO. 66746

GROSS & NET LENGTH = 3655.00 FT. = 0.69 MILE

STATE OF ILLINOIS  
DEPARTMENT OF TRANSPORTATION  
DIVISION OF HIGHWAYS

SUBMITTED 10-15 20 09

*James Rayson*  
DEPUTY DIRECTOR OF HIGHWAYS, REGION ENGINEER

December 4, 20 09  
*Charles G. Ingensoll*  
ENGINEER OF DESIGN AND ENVIRONMENT

December 4, 20 09  
*Christine M. Reed*  
DIRECTOR OF HIGHWAYS, CHIEF ENGINEER

**PRINTED BY THE AUTHORITY  
OF THE STATE OF ILLINOIS**