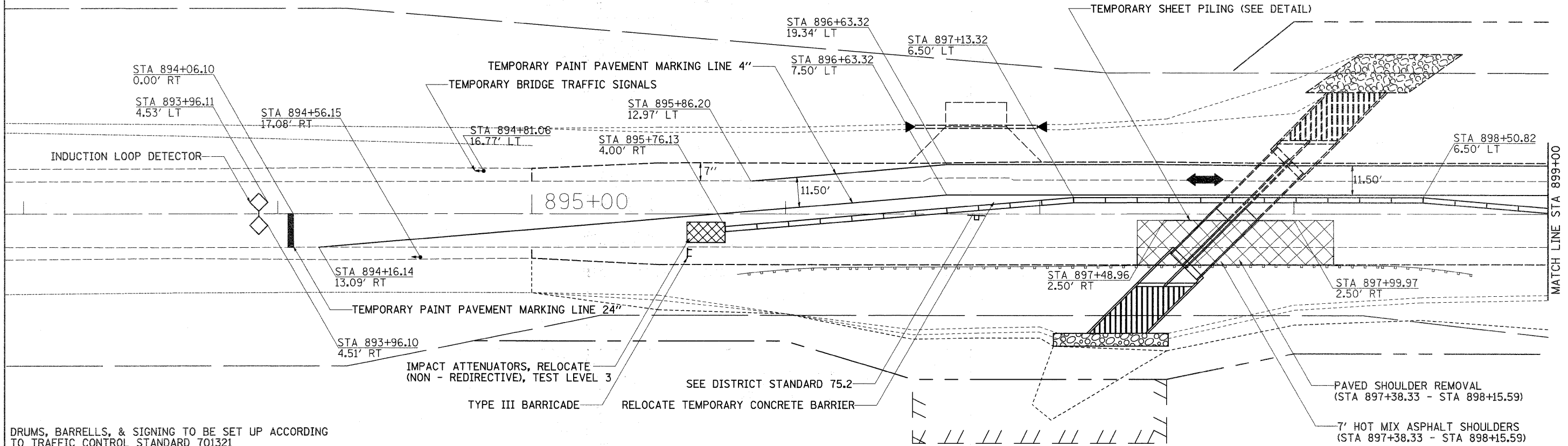
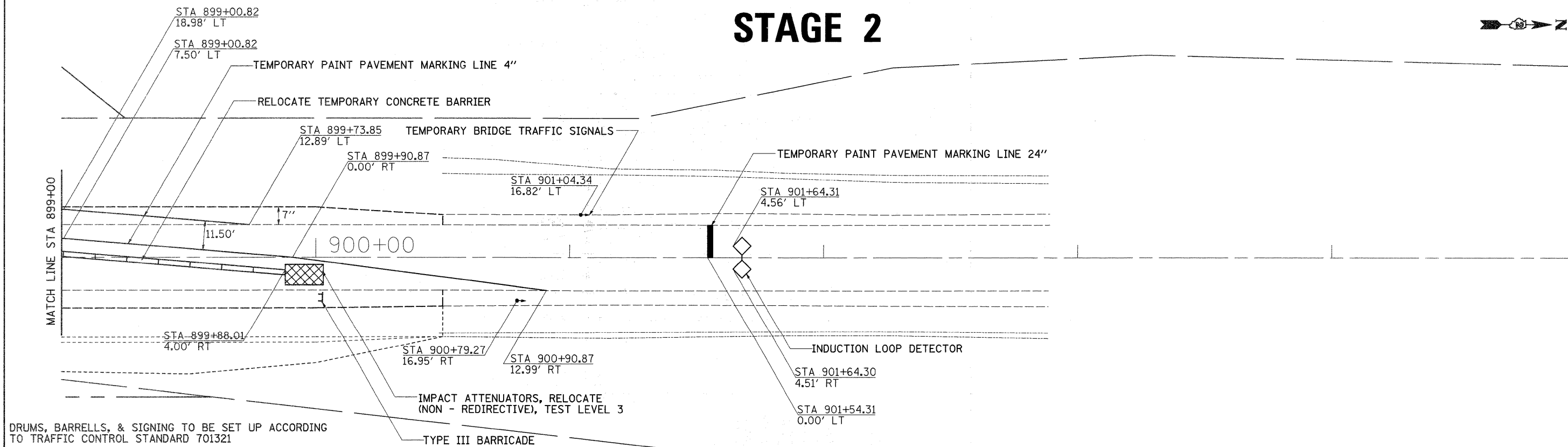


STAGE 2



DRUMS, BARRELS, & SIGNING TO BE SET UP ACCORDING TO TRAFFIC CONTROL STANDARD 701321
 NOTE: SEE DISTRICT STANDARDS 99.4 & 75.2 FOR ADDITIONAL STAGING SIGNS

STAGE 2



DRUMS, BARRELS, & SIGNING TO BE SET UP ACCORDING TO TRAFFIC CONTROL STANDARD 701321
 NOTE: SEE DISTRICT STANDARDS 99.4 & 75.2 FOR ADDITIONAL STAGING SIGNS

FILE NAME =	USER NAME = goffjl	DESIGNED -	REVISED -	STATE OF ILLINOIS DEPARTMENT OF TRANSPORTATION	STAGING DETAILS		F.A.P. RTE.	SECTION	COUNTY	TOTAL SHEETS	SHEET NO.	
ct:\pw\work\FWIDOT\GOFFJL\dms37299\ad1107stg.dgn		DRAWN -	REVISED -		SCALE:	SHEET NO. 2 OF 2 SHEETS	STA.	TO STA.	650	104T-2	JO DAVIESS	53 22
		PLOT SCALE = 20.0000' / IN.	REVISED -									
		PLOT DATE = Mon Sep 21 07:55:15 2009	REVISED -									
								FED. ROAD DIST. NO.		ILLINOIS FED. AID PROJECT		
								CONTRACT NO. 64CT9				