

**INDEX OF SHEETS**

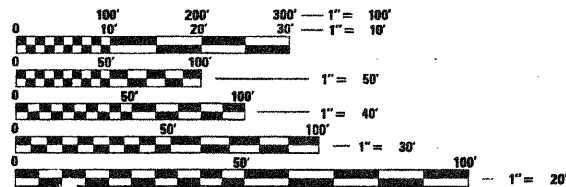
SHEET #	DESCRIPTION
1	TITLE
2	GENERAL NOTES AND STANDARDS
3	SUMMARY OF QUANTITIES
4	LOCATION MAP AND TERMINI DETAIL
5	TYPICAL CROSS SECTIONS
6	TYPICAL CROSS SECTIONS
7	SCHEDULE OF QUANTITIES
8	SCHEDULE OF QUANTITIES
9	RESURFACING SCHEDULE
10	DETECTOR LOOP DETAIL
11	PAVEMENT MARKING PLAN
12	TC 10 TRAFFIC CONTROL AND PROTECTION FOR SIDE ROADS, INTERSECTIONS, AND DRIVEWAYS (DISTRICT 1)
13	TC 13 TYPICAL PAVEMENT MARKINGS (DISTRICT 1)
14	BD 24 CURB OR CURB AND GUTTER REMOVAL AND REPLACEMENT (DISTRICT 1)
15	BD 32 BUTT JOINT AND HMA TAPER DETAILS (DISTRICT 1)
16	TS 07 DETECTOR LOOP INSTALLATION DETAILS FOR ROADWAY RESURFACING (DISTRICT 1)

**HIGHWAY STANDARDS, SEE SHEET NO. 2**

**PROJECT IS LOCATED IN THE VILLAGE OF WOODRIDGE**

**TRAFFIC INFORMATION**

DESIGN DESIGNATION	URBAN MINOR ARTERIAL
DESIGN SPEED =	25 MPH
POSTED SPEED =	25 MPH
ADT (2009) =	11,581



FULL SIZE PLANS HAVE BEEN PREPARED USING STANDARD ENGINEERING SCALES. REDUCED SIZED PLANS WILL NOT CONFORM TO STANDARD SCALES. IN MAKING MEASUREMENTS ON REDUCED PLANS, THE ABOVE SCALES MAY BE USED.

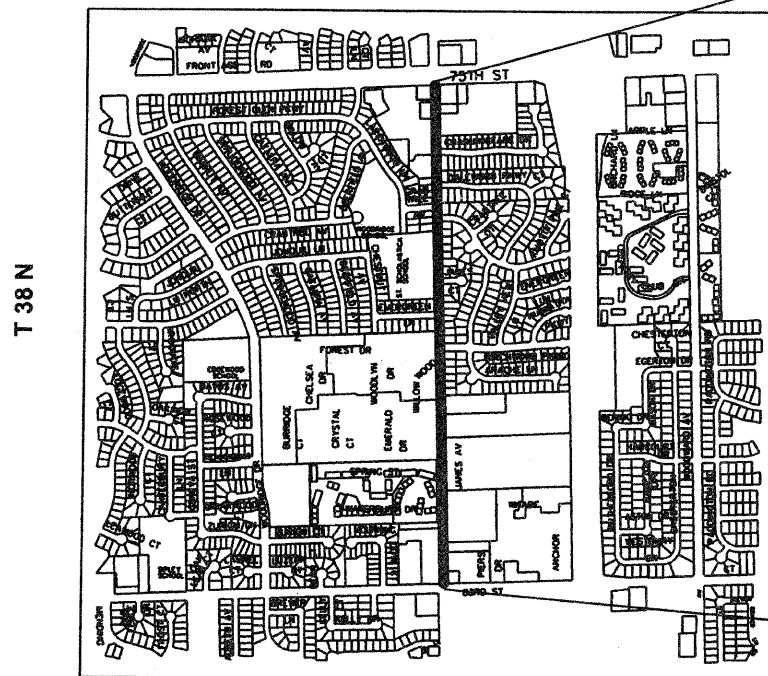
J.U.L.I.E  
JOINT UTILITY LOCATION INFORMATION FOR EXCAVATION  
1-800-892-0123 OR 811

**CONTRACT NO. 63347**

PLANS REVISED PER IDOT 10/12/09  
PLANS REVISED PER IDOT 8/4/09  
PLANS PREPARED 6/6/09

**STATE OF ILLINOIS  
DEPARTMENT OF TRANSPORTATION  
DIVISION OF HIGHWAYS  
PLANS FOR PROPOSED  
FEDERAL AID HIGHWAY  
LOCAL AGENCY  
PRESERVATION PROJECT (LAPP)  
FAU ROUTE 2588 (JANES AVENUE)  
75TH STREET TO 83RD STREET  
SECTION: 09-00063-00-RS  
PROJECT NO: ARA-9003 (397)  
JOB NO: C-91-786-09  
VILLAGE OF WOODRIDGE  
DuPAGE COUNTY**

R 10 E



LOCATION MAP IS NOT TO SCALE

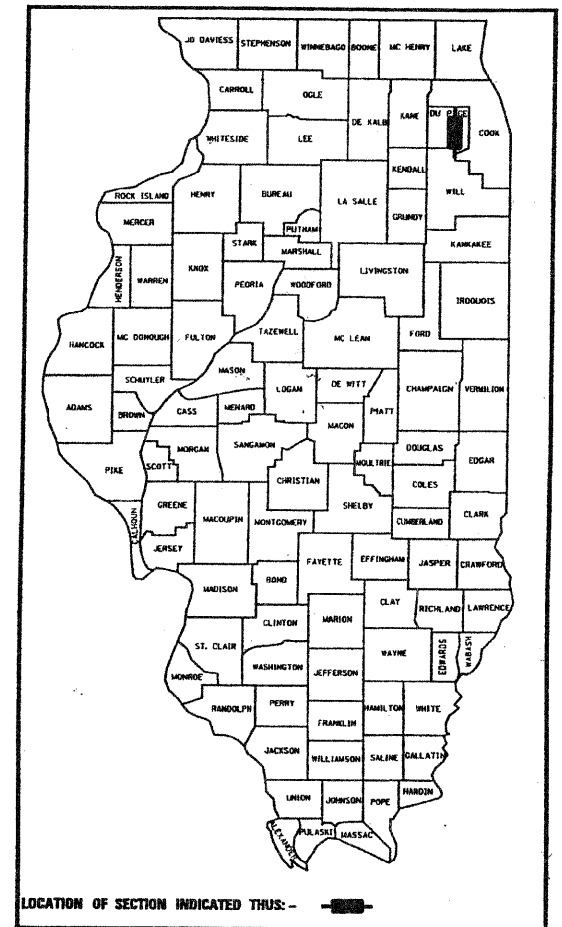
**GROSS LENGTH = 5,229 FEET (.990 mi)  
NET LENGTH = 5,229 FEET (.990 mi)**

END IMPROVEMENTS  
STA. 179+97

BEGIN IMPROVEMENTS  
STA. 127+68.5

SECTION	COUNTY	TOTAL SHEETS	SHEET NUMBER
09-00063-00-RS	DuPAGE	16	1

**CONTRACT NO. 63347**



**STATE OF ILLINOIS  
DEPARTMENT OF TRANSPORTATION  
DIVISION OF HIGHWAYS**

Approved 10/9 2009  
*Zill A. Khan*  
VILLAGE OF WOODRIDGE, VILLAGE ENGINEER

Passed October 26 2009  
*Chet Altshuler*  
DISTRICT 1 ENGINEER OF LOCAL ROADS AND STREETS

Released for Bid  
Based on Limited Review October 26, 2009  
*Diana M. O'Keefe*  
DEPUTY DIRECTOR OF HIGHWAYS, REGION 1 ENGINEER



*Zill A. Khan*  
Lic. Exp: 11/30/2011

**PRINTED BY THE AUTHORITY  
OF THE STATE OF ILLINOIS**

PLANS PREPARED BY:  
**THE VILLAGE OF WOODRIDGE  
DEPARTMENT OF PUBLIC WORKS**

FIELD ENGINEER: MARILYN SOLOMON, (847) 705-4407

## GENERAL NOTES

**CONTRACT NO. 63347**

**SPECIFICATIONS, STANDARDS AND SPECIAL PROVISIONS:**

ALL CONSTRUCTION SHALL BE PERFORMED IN ACCORDANCE WITH THE ILLINOIS DEPARTMENT OF TRANSPORTATION "STANDARD SPECIFICATIONS FOR ROAD AND BRIDGE CONSTRUCTION", ADOPTED JANUARY 1, 2007 (HEREINAFTER REFERRED TO AS THE STANDARD SPECIFICATIONS); THE "SUPPLEMENTAL SPECIFICATIONS AND RECURRING SPECIAL PROVISIONS", ADOPTED JANUARY 1, 2010; THE LATEST EDITION OF THE "ILLINOIS MANUAL ON UNIFORM TRAFFIC CONTROL DEVICES FOR STREETS, THE "DETAILS" ON THE PLANS AND THE "SPECIAL PROVISIONS" INCLUDED IN THE CONTRACT DOCUMENTS. ANY REFERENCE TO STANDARDS THROUGHOUT THE PLANS OR SPECIAL PROVISIONS SHALL BE INTERPRETED AS THE LATEST STANDARD OF THE ILLINOIS DEPARTMENT OF TRANSPORTATION.

**PROJECT COORDINATION:**

THE CONTRACTOR SHALL NOTIFY THE VILLAGE ENGINEER AT LEAST 72 HOURS IN ADVANCE OF BEGINNING WORK AND SHALL COORDINATE ALL CONSTRUCTION OPERATIONS WITH THE ENGINEER. ATTENTION IS CALLED TO SECTION 701 OF THE STANDARD SPECIFICATIONS AND THE SPECIAL PROVISIONS FOR TRAFFIC CONTROL AND PROTECTION. THE STORAGE OF EQUIPMENT AND/OR MATERIALS WITHIN THE RIGHT-OF-WAY OF ANY STREET AND/OR PARK PROPERTY SHALL REQUIRE PRIOR APPROVAL OF THE ENGINEER.

**SAFETY:**

ALL CONSTRUCTION PERSONNEL WILL BE REQUIRED TO WEAR FLORESCENT ORANGE, FLUORESCENT YELLOW/GREEN, OR A COMBINATION OF FLORESCENT ORANGE AND FLUORESCENT GREEN/YELLOW SAFETY VESTS MEETING THE REQUIREMENTS OF THE STANDARDS INSTITUTE SPECIFICATION ANSI/ISEA 107-1999 FOR THE CONSPICUITY CLASS 2 GARMENTS AT ALL TIMES WHILE ON THE CONSTRUCTION SITE.

**EXISTING UTILITIES:**

IT SHALL BE THE CONTRACTOR'S RESPONSIBILITY TO VERIFY THE EXISTENCE, NATURE AND EXACT LOCATIONS OF ALL UTILITY LINES AND APPURTENANCES WITHIN THE LIMITS OF THE IMPROVEMENTS. THE CONTRACTOR SHALL GIVE PRIOR NOTIFICATION TO THE UTILITY COMPANIES AND THE VILLAGE OF WOODRIDGE OF HIS INTENTION TO BEGIN WORK.

THE CONTRACTOR SHALL BE RESPONSIBLE FOR ANY DAMAGE OR DESTRUCTION OF PUBLIC OR PRIVATE PROPERTY, AND SHALL RESTORE SUCH PROPERTY AT HIS/HER EXPENSE.

THE CONTRACTOR SHALL BE RESPONSIBLE FOR CALLING J.U.L.I.E. AT TOLL FREE NUMBER 800-892-0123 OR 811, AND THE VILLAGE OF WOODRIDGE PUBLIC WORKS DEPARTMENT AT 630-719-4753 REQUESTING UTILITY LOCATION AND STAKING 48 HOURS PRIOR TO EXCAVATION.

### HIGHWAY STANDARDS

STANDARD #	DESCRIPTION
000001-05	STANDARD SYMBOLS, ABBREVIATIONS AND PATTERNS
424001-05	CURB RAMPS FOR SIDEWALKS
442201-03	CLASS D PATCHES
606001-04	CONCRETE CURB TYPE B AND COMBINATION CONCRETE CURB AND GUTTER
701501-05	URBAN LANE CLOSURE, 2L, 2W UNDIVDED
701701-06	URBAN LANE CLOSURE MULTILANE INTERSECTION
701801-04	LANE CLOSURE MULTILANE 1W OR 2W CROSSWALK OR SIDEWALK CLOSURE
701901-01	TRAFFIC CONTROL DEVICES
701006-03	OFF-ROAD OPERATIONS 2L, 2W, 15' TO 24' FROM PAVEMENT EDGE
701011-02	OFF-ROAD MOVING OPERATIONS, 2L, 2W, DAY ONLY
780001-02	TYPICAL PAVEMENT MARKINGS
886001-01	DETECTOR LOOP INSTALLATIONS
886006-01	TYPICAL LAYOUTS FOR DETECTION LOOPS

**TRAFFIC CONTROL AND MAINTENANCE:**

THE CONTRACTOR SHALL SCHEDULE HIS WORK SO THAT ONLY ONE TEMPORARY LANE CLOSURE ON ONE STREET IN ONE DIRECTION IS IMPLEMENTED AT A TIME. A LANE CLOSURE WILL ONLY BE PERMITTED DURING CONSTRUCTION OPERATIONS AND IN ACCORDANCE WITH THE APPLICABLE IDOT STANDARDS. THE CONTRACTOR SHALL FURNISH, ERECT, AND MAINTAIN ALL SIGNS, BARRICADES AND OTHER TRAFFIC CONTROL DEVICES, INCLUDING FLAGGERS, REQUIRED TO MAINTAIN TRAFFIC FLOW.

ACCESS TO ABUTTING PROPERTY SHALL BE PROVIDED AT ALL TIMES DURING CONSTRUCTION OF THIS PROJECT. TIME REQUIRED FOR CONSTRUCTION AT DRIVEWAYS SHALL BE LIMITED TO THE MINIMUM TIME REQUIRED FOR SAID CONSTRUCTION, AND IF REQUIRED, TEMPORARY AGGREGATE SURFACE FOR DRIVEWAYS SHALL BE PROVIDED.

**DISPOSAL OF EXCESS MATERIAL:**

ALL EXCESS MATERIAL AND ANY OTHER DEBRIS SHALL BE DISPOSED OF BY THE CONTRACTOR AT AN OFF-SITE DISPOSAL AREA.

**PROTECTION OF PUBLIC/PRIVATE PROPERTY:**

THE CONTRACTOR SHALL PROTECT ALL EXISTING TREES, SHRUBS, FENCES, DRAIN LINES, POWER LINES, AND ALL OTHER PUBLIC/PRIVATE PROPERTY. ANY ITEM THAT IS DAMAGED SHALL BE REPLACED OR REPAIRED BY THE CONTRACTOR AS DIRECTED BY THE ENGINEER AT NO ADDITIONAL COST TO THE CONTRACT.

**SAW CUTTING FOR REMOVAL:**

THE CONTRACTOR SHALL MAKE ALL FULL DEPTH SAW CUT AT THE EDGE OF PAVEMENT ADJACENT TO THE REMOVAL OF ALL CONCRETE CURB OR COMBINATION CONCRETE CURB AND GUTTER. THE CONTRACTOR SHALL MAKE ALL FULL DEPTH SAW CUTS REQUIRED FOR THE REMOVAL OF CONCRETE CURB AND GUTTERS, SIDEWALKS, AND DRIVEWAYS AS SPECIFIED, OR AS DIRECTED BY THE ENGINEER. THE COST SHALL BE CONSIDERED INCLUDED IN THE COST FOR REMOVAL OF THE SPECIFIED ITEM IN THE CONTRACT.

**HOT-MIX ASPHALT DRIVEWAY REMOVAL AND REPLACEMENT:**

THE ITEM OF HMA DRIVEWAY REMOVAL AND REPLACEMENT SHALL INCLUDE ALL SAW CUTS TO PROVIDE A NEAT, STRAIGHT, PERPENDICULAR EDGE ADJACENT TO THE DRIVEWAY TO REMAIN. THE COST SHALL BE CONSIDERED INCLUDED IN THE COST FOR HMA DRIVEWAY REMOVAL AND REPLACEMENT.

**EXISTING STREET CLEANLINESS:**

THE CONTRACTOR SHALL KEEP EXISTING ADJACENT STREETS CLEAN OF DIRT, MUD, AND OTHER DEBRIS, AND WHEN NECESSARY, CLEAN SAID PAVEMENTS ON A DAILY BASIS OR WHEN DIRECTED BY THE ENGINEER.

**BASE COURSE CLEANING:**

PRIOR TO APPLYING THE HOT-MIX ASPHALT PRIME COAT, THE BASE SURFACE INCLUDING GUTTERS SHALL BE CLEANED OF LOOSE GRINDINGS, LEAVES, OF ALL DUST, DIRT, WEEDS AND OTHER FOREIGN MATERIALS. ALL CRACK FILL MATERIAL SHALL BE REMOVED IN ITS ENTIRETY ALONG THE CURB LINE. COST TO BE CONSIDERED INCLUDED IN THE COST OF THE HOT-MIX ASPHALT SURFACE WORK.

**BASE PATCHING AND REPAIR:**

PRIOR TO THE PLACEMENT OF PATCHES FOR BASE REPAIR, THE SUBGRADE SHALL BE INSPECTED BY THE ENGINEER. IF ADDITIONAL SUBBASE REPAIR IS NECESSARY, THE AREA SHALL BE UNDERCUT AND BACKFILLED WITH P.G.E. MATERIAL AS APPROVED BY THE ENGINEER. THE UNDERCUTTING, REMOVAL, HAULING AND DISPOSAL OF THE UNSUITABLE MATERIAL WILL NOT BE MEASURED AND PAID SEPARATELY, BUT SHALL BE CONSIDERED INCLUDED IN THE ITEM OF POROUS GRANULAR EMBANKMENT, SUBGRADE AS REQUIRED BY THE ENGINEER.

**HOT-MIX ASPHALT SURFACE REMOVAL:**

THE CONTRACTOR SHALL COORDINATE THE WORK SUCH THAT THE PERIOD OF TIME BETWEEN THE MILLING OF THE EXISTING BITUMINOUS SURFACE AND THE PLACEMENT OF THE BITUMINOUS BINDER IS KEPT TO A MINIMUM. THIS PERIOD SHALL NOT EXCEED 7 CALENDAR DAYS. THE ENGINEER SHALL DETERMINE IF AN EXTENSION OF TIME WILL BE ALLOWED DUE TO WEATHER OR OTHER UNFORSEEN CIRCUMSTANCES.

**CLEAN-UP AND DISPOSAL:**

THE CONTRACTOR SHALL MAINTAIN THE SITE IN A CLEAN AND ORDERLY MANNER. DEBRIS AND ANY SURPLUS MATERIAL SHALL BE REMOVED AND RESTORATION SHALL PROCEED AS THE WORK PROCEEDS. IF THE OWNER OR THE ENGINEER SO DIRECTS, THE CONTRACTOR SHALL STOP ALL OTHER WORK AND CONCENTRATE ON CLEAN-UP AND RESTORATION. DEBRIS AND SURPLUS MATERIAL SHALL BE DISPOSED OF BY THE CONTRACTOR OFF-SITE.

**CONSTRUCTION LIMITS:**

THE CONTRACTOR SHALL CONFINE OPERATIONS WITHIN THE CONSTRUCTION LIMITS OF THE PROJECT. ANY DAMAGE INSIDE AND OUTSIDE OF SAID CONSTRUCTION LIMITS SHALL BE REPAIRED AT THE CONTRACTOR'S EXPENSE.

**LANDSCAPING RESTORATION:**

ALL GRASS AREAS INSIDE AND OUTSIDE THE CONSTRUCTION LIMITS DAMAGED DURING CONSTRUCTION, INCLUDING AREAS ADJACENT TO SIDEWALK REMOVAL AND CONCRETE CURB AND GUTTER REMOVAL, SHALL BE RESTORED WITH A MINIMUM OF 4" PULVERIZED TOP SOIL AND SEEDING, CLASS 2A. THIS WORK SHALL BE DONE AT THE CONTRACTOR'S EXPENSE.

**PROPERTY ACCESS:**

DURING CONSTRUCTION, ALL SIGNS, BARRICADES, AND TEMPORARY PAVEMENT MARKINGS WILL CONFORM TO THE ILLINOIS MUTCD. VEHICULAR ACCESS TO LOCAL PROPERTIES WILL BE MAINTAINED AT ALL TIMES DURING CONSTRUCTION, EXCEPT WHEN CONSTRUCTION OPERATIONS OCCUR DIRECTLY ON OR IN FRONT OF DRIVEWAYS. IN THIS CASE, FLAG PERSONS WILL BE USED TO DIRECT AND CONTROL TRAFFIC.

**CURB AND GUTTER REPLACEMENT:**

THE MINIMUM THICKNESS OF THE PROPOSED GUTTER FLAG SHALL BE 10" UNLESS OTHERWISE STATED IN THE PLANS OR DIRECTED BY THE ENGINEER.

**VILLAGE OF WOODRIDGE PUBLIC WORKS**  
1 Plaza Drive, Woodridge IL 60517 (630) 719-4753

**JANES AVENUE  
REHABILITATION PROJECT**

**GENERAL NOTES AND STANDARDS**

Summary of Quantities

1000

CONTRACT NO. 63347

CODE NO	ITEM	UNIT	TOTAL QUANTITY
20201200	REMOVAL AND DISPOSAL OF UNSUITABLE MATERIAL	CU YD	50
20700420	POROUS GRANULAR EMBANKMENT, SUBGRADE	CU YD	50
40600100	BITUMINOUS MATERIALS (PRIME COAT)	GALLON	4573
40600300	AGGREGATE (PRIME COAT)	TON	69
40600400	MIXTURE FOR CRACKS, JOINTS, AND FLANGEWAYS	TON	10
40600895	CONSTRUCTING TEST STRIP	EACH	1
40600982	HOT-MIX ASPHALT SURFACE REMOVAL - BUTT JOINT	SQ YD	592
40603340	HOT-MIX ASPHALT SURFACE COURSE, MIX "D", N70	TON	2241
42400200	PORTLAND CEMENT CONCRETE SIDEWALK 5 INCH	SQ FT	2700
42400800	DETECTABLE WARNINGS	SQ FT	300
44000160	HOT-MIX ASPHALT SURFACE REMOVAL, 2 3/4"	SQ YD	22865
44000600	SIDEWALK REMOVAL	SQ FT	2700
44001700	COMBINATION CONCRETE CURB AND GUTTER REMOVAL AND REPLACEMENT	FOOT	1305
44201705	CLASS D PATCHES, TYPE II, 5 INCH	SQ YD	25
44201709	CLASS D PATCHES, TYPE III, 5 INCH	SQ YD	50
44201711	CLASS D PATCHES, TYPE IV, 5 INCH	SQ YD	350
60255500	MANHOLES TO BE ADJUSTED	EACH	5
60260100	INLETS TO BE ADJUSTED	EACH	7
60262700	INLETS TO BE RECONSTRUCTED	EACH	3
60265700	VALVE VAULTS TO BE ADJUSTED	EACH	1
60300310	FRAMES AND LIDS TO BE ADJUSTED (SPECIAL)	EACH	7
67100100	MOBILIZATION	L SUM	1
70102620	TRAFFIC CONTROL AND PROTECTION, STANDARD 701501	L SUM	1
70102635	TRAFFIC CONTROL AND PROTECTION, STANDARD 701701	L SUM	1
70102640	TRAFFIC CONTROL AND PROTECTION, STANDARD 701801	L SUM	1
70106800	CHANGEABLE MESSAGE SIGN	CAL-MO	2
70300100	SHORT-TERM PAVEMENT MARKING	FOOT	1500
70300610	TEMPORARY PAINT PAVEMENT MARKING, LETTERS AND SYMBOLS	SQ FT	250
70300625	TEMPORARY PAINT PAVEMENT MARKING LINE 4"	FOOT	2729
70300660	TEMPORARY PAINT PAVEMENT MARKING LINE 24"	FOOT	120
70301000	WORK ZONE PAVEMENT MARKING REMOVAL	SQ FT	600
* 78000100	THERMOPLASTIC PAVEMENT MARKING - LETTERS AND SYMBOLS	SQ FT	1000
* 78000200	THERMOPLASTIC PAVEMENT MARKING - LINE 4"	FOOT	12000
* 78000400	THERMOPLASTIC PAVEMENT MARKING - LINE 6"	FOOT	2500
* 78000600	THERMOPLASTIC PAVEMENT MARKING - LINE 12"	FOOT	537
* 78000650	THERMOPLASTIC PAVEMENT MARKING - LINE 24"	FOOT	120
* 88600100	DETECTOR LOOP, TYPE I	FOOT	1275
X4067107	POLYMERIZED LEVELING BINDER (MACHINE METHOD), IL-4.75, N50	TON	1280
XX006947	HOT-MIX ASPHALT DRIVEWAY REMOVAL AND REPLACEMENT	SQ YD	550

\* DENOTES SPECIALTY ITEM(S)

VILLAGE OF WOODRIDGE PUBLIC WORKS  
1 Plaza Drive, Woodridge IL 60517 (630) 719-4753

JANES AVENUE  
REHABILITATION PROJECT

SUMMARY OF QUANTITIES

DRAWN BY: AF

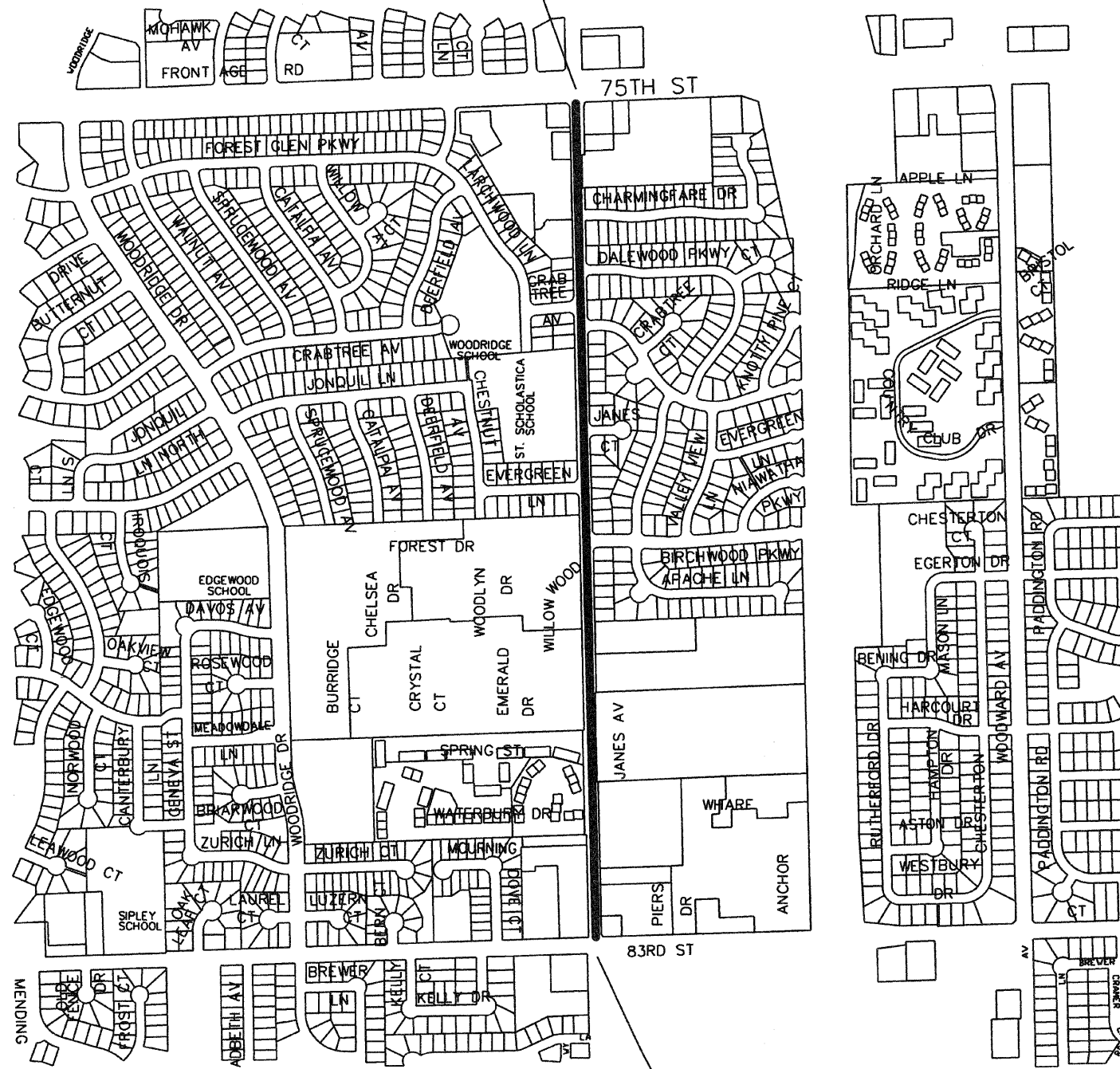
CHECKED BY: SM

SECTION	COUNTY	TOTAL SHEETS	SHEET NUMBER
09-00063-00-RS	DuPAGE	16	4

CONTRACT NO. 63347

# LOCATION MAP

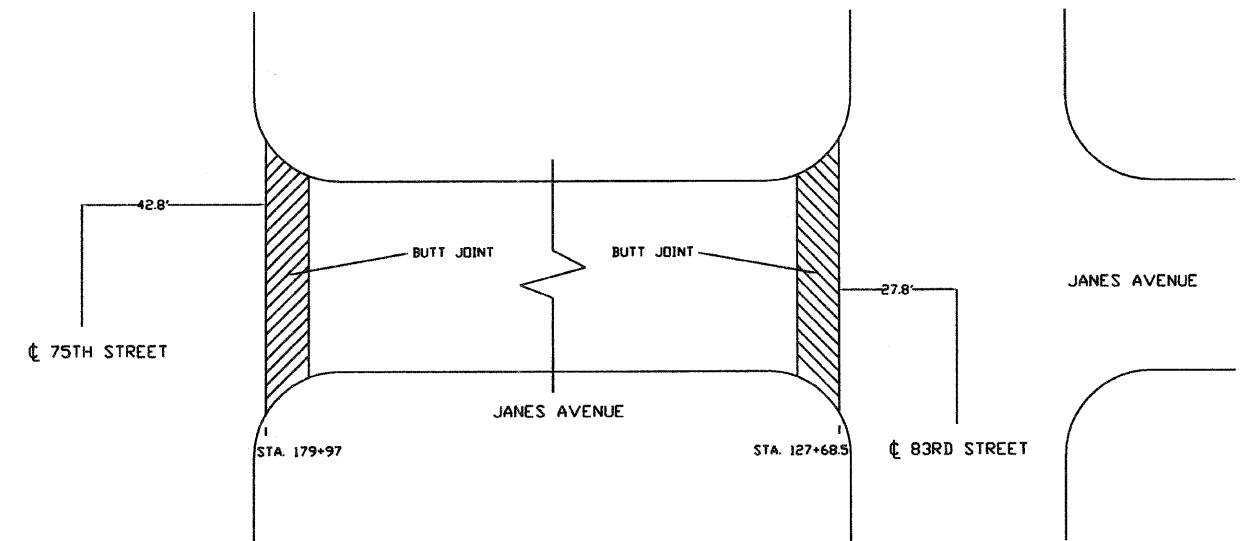
END IMPROVEMENTS  
STA. 179+97



BEGIN IMPROVEMENTS  
STA. 127+68.5

# TERMINI DETAIL

MILL 2 3/4" OF THE EXISTING HMA AND REPLACE WITH  
1" OF POLYMERIZED LEVELING BINDER, IL-4.75, N50 AND  
1 3/4" OF HMA SURFACE COURSE MIX "D", N70  
FROM STA. 127+68.5 TO STA. 179+97



MAPS ARE NOT TO SCALE

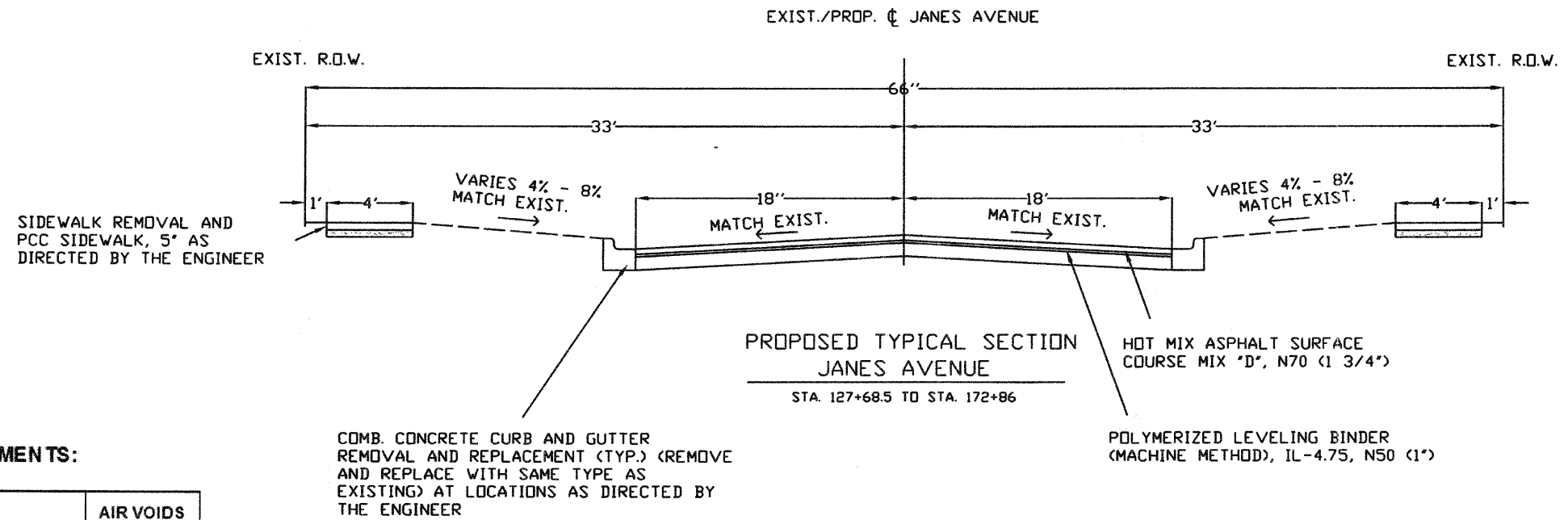
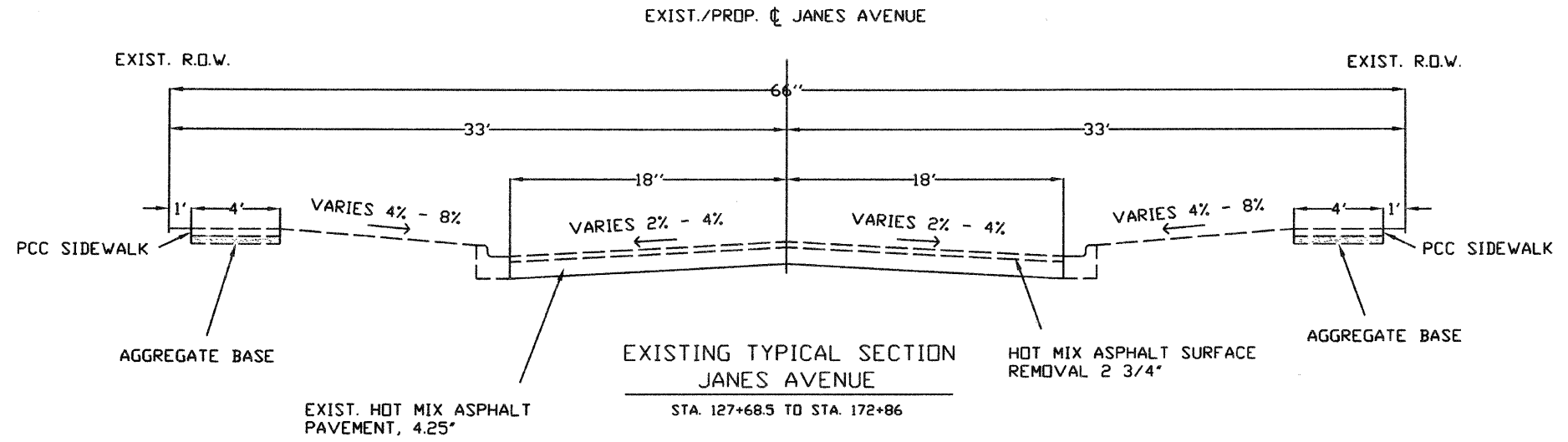
**VILLAGE OF WOODRIDGE PUBLIC WORKS**  
1 Plaza Drive, Woodridge IL 60517 (630) 719-4753

**JANES AVENUE  
REHABILITATION PROJECT**

**LOCATION MAP AND TERMINI DETAIL**

DRAWN BY: AF CHECKED BY: SM

CONTRACT NO. 63347



CONTRACTOR SHALL MILL BEFORE PATCHING

**HOT-MIX ASPHALT MIXTURE REQUIREMENTS:**

MIXTURE TYPE	AIR VOIDS @Ndes
ROADWAY HOT-MIX ASPHALT SURFACE COURSE, MIX "D", N70 (IL 9.5mm) 1 3/4"	4% @ 70 Gyr.
POLYMERIZED LEVELING BINDER (MACHINE METHOD), IL-4.75, N50 1"	4% @ 50 Gyr.
PATCHING CLASS D PATCHES (HMA BINDER IL-19mm) 5"	4% @ 70 Gyr.

THE UNIT WEIGHT USED TO CALCULATE ALL HMA SURFACE MIXTURE QUANTITIES IS 112 LBS/SQ YD/M.  
 THE "AC TYPE" FOR POLYMERIZED HMA MIXES SHALL BE "SBS/SBR PG 70 -22" AND FOR NON-POLYMERIZED HMA THE "AC TYPE" SHALL BE "PG 64 -22" UNLESS MODIFIED BY DISTRICT ONE SPECIAL PROVISIONS.  
 FOR "PERCENT OF RAP" SEE DISTRICT ONE SPECIAL PROVISIONS.

**CROSS SECTIONS ARE NOT TO SCALE**

**VILLAGE OF WOODRIDGE PUBLIC WORKS**  
 1 Plaza Drive, Woodridge IL 60517 (630) 719-4753

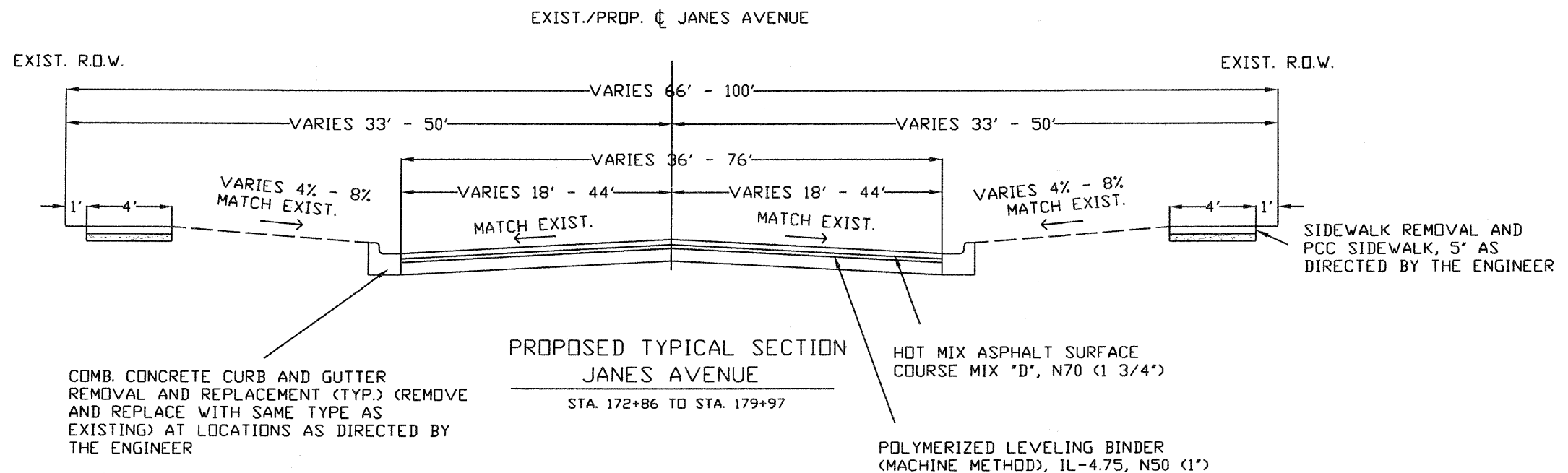
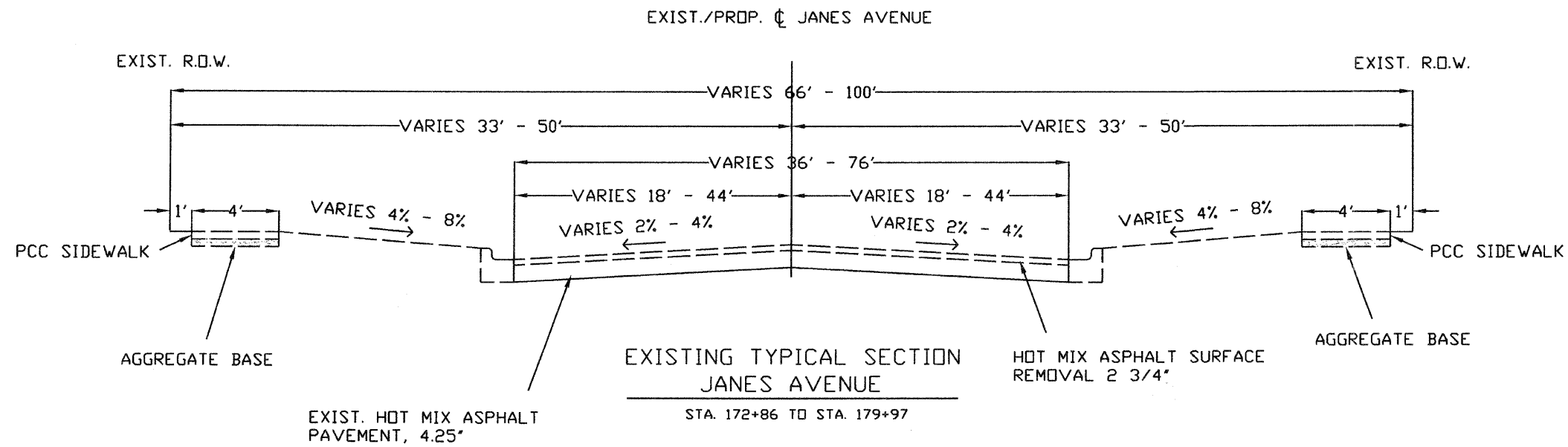
**JANES AVENUE  
 REHABILITATION PROJECT**

**TYPICAL CROSS SECTIONS**

DRAWN BY: AF CHECKED BY: SM

SECTION	COUNTY	TOTAL SHEETS	SHEET NUMBER
09-00063-00-RS	DuPAGE	16	6

CONTRACT NO. 63347



CROSS SECTIONS ARE NOT TO SCALE

VILLAGE OF WOODRIDGE PUBLIC WORKS  
1 Plaza Drive, Woodridge IL 60517 (630) 719-4753

JANES AVENUE  
REHABILITATION PROJECT

TYPICAL CROSS SECTIONS

DRAWN BY: AF

CHECKED BY: SM

**CONTRACT NO. 63347**

SIDEWALK REMOVAL AND REPLACEMENT SCHEDULE																																											
STA	SIDE	SIDEWALK REMOVAL WIDTH (FT)	SIDEWALK REMOVAL LENGTH (FT)	44000600 SIDEWALK REMOVAL (SQ. FT)	PCC SIDEWALK WIDTH (FT)	PCC SIDEWALK LENGTH (FT)	42400200 PCC SIDEWALK, 5" (SQ. FT)	DETECTABLE WARNINGS WIDTH (FT)	DETECTABLE WARNINGS LENGTH (FT)	DETECTABLE WARNINGS (SQ. FT)	STA	SIDE	SIDEWALK REMOVAL WIDTH (FT)	SIDEWALK REMOVAL LENGTH (FT)	44000600 SIDEWALK REMOVAL (SQ. FT)	PCC SIDEWALK WIDTH (FT)	PCC SIDEWALK LENGTH (FT)	42400200 PCC SIDEWALK, 5" (SQ. FT)	DETECTABLE WARNINGS WIDTH (FT)	DETECTABLE WARNINGS LENGTH (FT)	DETECTABLE WARNINGS (SQ. FT)																						
130+55	RT	4	5	20	4	5	20	2	4	8	163+83	RT	4	5	20	4	5	20																									
131+00	RT	6	5	30	6	5	30	2	4	8	164+83	LT	5	5	25	5	5	25																									
131+80	RT	5	5	25	5	5	25	2	4	8	164+45	RT	4	5	20	4	5	20	2	4	8																						
132+82	RT	5	5	25	5	5	25	2	4	8	165+94	RT	4	6	24	4	6	24	2	4	8																						
132+98	RT	5	5	25	5	5	25	2	4	8	166+71	LT	5	10	50	5	10	50	2	4	8																						
133+21	RT	5	5	25	5	5	25	2	4	8	167+05	LT	5	10	50	5	10	50	2	4	8																						
140+91	LT	5	5	25	5	5	25				167+14	RT	7	8	56	7	8	56	2	8	16																						
142+82	LT	5	15	75	5	15	75				168+65	LT	5	5	25	5	5	25																									
143+05	LT	4	9	36	4	9	36	2	4	8	168+95	RT	13	5	65			0																									
146+29	LT	5	6	30	5	60	300				168+95	LT	5	5	25	5	5	25																									
148+18	LT	4	12	48	4	12	48				170+36	LT	5	5	25	5	5	25	2	4	8																						
151+15	RT	4	21	84	4	21	84				170+81	LT	5	5	25	5	5	25			0																						
151+50	RT	4	9	36	4	9	36				171+89	LT	4	5	20	4	5	20			0																						
152+10	RT	4	6	24	4	6	24	2	4	8	172+19	RT	4	15	60			0																									
152+10	LT	4	5	20	4	5	20	2	4	8	172+22	RT	4	4	16	4	4	16	2	4	8																						
152+61	RT	4	6	24	4	6	24	2	4	8	172+36	LT	4	9	36	4	9	36	2	4	8																						
152+61	LT	4	5	20	4	5	20	2	4	8	182+52	LT	4	5	20	4	5	20	2	4	8																						
153+05	LT	4	5	20	4	5	20	2	4	8	172+84	RT	9	5	45	9	5	45			0																						
153+40	LT	4	9	36	4	9	36	2	4	8	172+85	LT	4	5	20	4	5	20			0																						
154+39	LT	4	16	64	4	16	64				172+90	RT	4	5	20	4	5	20	2	4	8																						
154+75	RT	4	32	128	4	32	126				172+90	LT	4	5	20	4	5	20	2	4	8																						
155+13	LT	4	5	20	4	5	20				173+55	RT	4	8	32	4	8	32																									
155+45	LT	4	5	20	4	5	20	2	4	8	174+00	RT	4	15	60	4	15	60																									
155+94	LT	4	5	20	4	5	20	2	4	8	174+26	RT	4	30	120	4	30	120	2	4	8																						
156+00	LT	4	15	60			0				174+74	LT	5	10	50	4	10	40																									
157+14	LT	4	10	40	4	10	40				174+91	RT	4	5	20	4	5	20	2	4	8																						
157+89	RT	4	10	40	4	10	40				175+86	RT	4	5	20	4	5	20			0																						
159+00	RT	4	10	40	4	10	40	2	4	8	176+14	RT	4	5	20	4	5	20			0																						
159+05	RT	4	6	24	4	6	24	2	4	8	176+60	RT	4	6	24	4	6	24	2	4	8																						
159+42	LT	4	10	40	4	10	40				177+00	RT	14	3	42	14	3	40	2	4	8																						
159+50	RT	4	5	20	4	5	20	2	4	8	177+15	RT	4	5	20	4	5	20																									
159+55	RT	4	14	55			0				177+50	RT	4	10	40	4	10	40																									
161+00	RT	4	20	80	4	20	80				178+76	LT	5	16	80	4	16	64																									
161+86	LT	5	5	25	5	5	25				179+00	LT	5	5	25	5	5	25	2	4	8																						
161+90	RT	4	5	20	4	5	20				179+19	LT	5	5	25	5	5	25	2	4	8																						
162+22	LT	5	5	25	5	5	25				179+90	LT	5	5	25	5	5	25	2	4	8																						
162+77	LT	5	5	25	5	5	25																																				
															2700			2700																									

DRIVEWAY SCHEDULE	
LOCATION	XX006947 HOT MIX ASPHALT DRIVEWAY REMOVAL AND REPLACEMENT (SQ. YD.)
VARIOUS LOCATIONS BETWEEN STA. 130+00 TO 134+00	40
VARIOUS LOCATIONS BETWEEN STA. 144+00 TO 152+00	140
VARIOUS LOCATIONS BETWEEN STA. 153+00 TO 159+00	130
VARIOUS LOCATIONS BETWEEN STA. 160+00 TO 165+00	175
VARIOUS LOCATIONS BETWEEN STA. 167+00 TO 172+50	65
	<b>550</b>
	SF

NOTE:  
ALL QUANTITIES SHOWN IN THE SCHEDULES ARE APPROXIMATE. THE ENGINEER WILL LOCATE ALL IMPROVEMENTS IN THE FIELD PRIOR TO CONSTRUCTION. PAYMENT SHALL BE BASED ON ACTUAL FIELD MEASUREMENTS.

**VILLAGE OF WOODRIDGE PUBLIC WORKS**  
1 Plaza Drive, Woodridge IL 60517 (630) 719-4753

**JANES AVENUE  
REHABILITATION PROJECT**

**SCHEDULE OF QUANTITIES**

DRAWN BY: AF CHECKED BY: SM

**CONTRACT NO. 63347**

CURB AND GUTTER REMOVAL AND REPLACEMENT SCHEDULE		
STA.	SIDE	44001700 CURB AND GUTTER REMOVAL AND REP. LENGTH (FT)
129+20	RT	7
129+30	LT	70
131+20	RT	30
131+70	RT	22
132+38	RT	33
133+00	RT	38
133+10	LT	60
133+95	RT	10
134+55	RT	10
136+72	RT	8
136+95	RT	11
137+48	LT	12
138+60	LT	16
139+27	RT	23
139+80	RT	13
141+50	RT	10
143+00	LT	17
145+28	RT	10
145+75	RT	12
146+54	RT	7
146+93	RT	10
147+28	RT	57
148+73	RT	12
149+08	RT	30
149+94	RT	65
150+00	LT	16
151+65	RT	20
152+53	RT	26
154+75	RT	15
156+00	LT	35
156+42	RT	14
157+98	RT	36
161+10	RT	7
161+28	LT	8
162+25	LT	16
162+50	RT	11
163+40	RT	58
164+05	LT	25
164+70	LT	30
165+60	LT	70
165+95	RT	20
166+56	LT	18
167+20	RT	54
167+25	LT	66
168+26	LT	6
168+60	RT	48
169+48	RT	15
169+75	LT	15
170+22	RT	19
170+90	RT	5
171+53	RT	14
171+85	RT	11
172+00	RT	5
172+15	RT	18
174+80	RT	11
		<b>1305</b>
		FOOT

PATCHING SCHEDULE									
STA.	SIDE	PATCH WIDTH (FT)	PATCH LENGTH (FT)	PATCH AREA (SQ. FT.)	20201200 REMOVAL AND DISPOSAL OF UNSUITABLE MATERIAL (CU. YD.)	20700420 POROUS GRANULAR EMBAKMENT SUBGRADE (CU. YD.)	44201705 CLASS D PATCHES TYPE II, 5" (SQ. YD.)	44201709 CLASS D PATCHES TYPE III, 5" (SQ. YD.)	44201711 CLASS D PATCHES TYPE IV, 5" (SQ. YD.)
138+85	RT	8	50	400	10	10			44
143+22	LT	13	10	130			14		
148+60	LT	12	18	216				25	
153+71	RT	12	28	336					37
153+92	LT	12	8	96			11		
156+00	LT	12	30	360					40
163+75	LT	12	25	300					33
167+55	LT	12	18	216				25	
167+75	RT	12	75	900	20	20			100
169+80	LT	12	41	492	20	20			55
171+20	LT	12	30	360					40
					<b>50</b>	<b>50</b>	<b>25</b>	<b>50</b>	<b>350</b>
					CY	CY	SY	SY	SY

DRAINAGE AND UTILITY STRUCTURE SCHEDULE						
STA.	SIDE	60255500 MANHOLES TO BE ADJUSTED (EACH)	60260100 INLETS TO BE ADJUSTED (EACH)	60262700 INLETS TO BE RECONSTRUCTED (EACH)	60265700 VALVE VAULTS TO BE ADJUSTED (EACH)	60300310 FRAME AND LIDS TO BE ADJUSTED (SPECIAL) (EACH)
130+75	LT		1			
133+80	LT	1				
151+94	RT		1			
155+65	LT	1				
159+75	RT			1		
159+75	LT		1			
164+40	RT			1		
164+40	LT		1			
165+50	RT	1				
166+00	RT	1				
166+90	LT					1
170+20	LT	1				
170+80	RT		1			
170+80	LT			1		
172+80	RT		1			
174+70	LT				1	
176+20	LT		1			
178+20	LT					1
179+60	RT					1
179+70	LT					1
179+80	RT					1
179+80	LT					1
179+85	RT					1
		<b>5</b>	<b>7</b>	<b>3</b>	<b>1</b>	<b>7</b>
		EA	EA	EA	EA	EA

NOTE:  
ALL QUANTITIES SHOWN IN THE SCHEDULES ARE APPROXIMATE. THE ENGINEER WILL LOCATE ALL IMPROVEMENTS IN THE FIELD PRIOR TO CONSTRUCTION. PAYMENT SHALL BE BASED ON ACTUAL FIELD MEASUREMENTS.

**VILLAGE OF WOODRIDGE PUBLIC WORKS**  
1 Plaza Drive, Woodridge IL 60517 (630) 719-4753

**JANES AVENUE  
REHABILITATION PROJECT**

**SCHEDULE OF QUANTITIES**



**CONTRACT NO. 63347**

**PAVEMENT QUANTITIES SCHEDULE**

STA.	SIDE	LOCATION	PAVEMENT WIDTH (FT)	PAVEMENT LENGTH (FT)	PAVEMENT AREA (SQ. FT.)	PAVEMENT AREA (SQ. YD.)	40600100 BITUMINOUS MATERIALS (PRIME COAT) (GALLON)	40600300 AGGREGATE (PRIME COAT) (TON)	40603340 HMA SURFACE COURSE, MIX "D", N70 (TON)	44000160 HMA SURFACE REMOVAL, 2 3/4" (SQ. YD.)	X4067107 POLYMERIZED LEVEL BINDER (TON)
127+68.5 TO 133+00		MAINLINE	38	531.5	20197	2244	448.8	6.7	219.9	2244	125.7
133+00 TO 138+00		MAINLINE	34	500	17000	1889	377.8	5.7	185.1	1889	105.8
138+00 TO 148+00		MAINLINE	33	1000	33000	3667	733.3	11.0	359.3	3667	205.3
148+00 TO 153+00		MAINLINE	33.5	500	16750	1861	372.2	5.6	182.4	1861	104.2
153+00 TO 158+00		MAINLINE	34.5	500	17250	1917	383.3	5.8	187.8	1917	107.3
158+00 TO 168+00		MAINLINE	34.8	1000	34800	3867	773.3	11.6	378.9	3867	216.5
168+00 TO 173+00		MAINLINE	35	500	17500	1944	388.9	5.8	190.6	1944	108.9
173+00 TO 178+00		MAINLINE	49	500	24500	2722	544.4	8.2	266.8	2722	152.4
178+00 TO 179+97		MAINLINE	75	205	15375	1708	341.7	5.1	167.4	1708	95.7
135+75	RT	SOUTH APARTMENT ENT.	BEGIN REMOVAL 10' FROM MAINLINE		720	80	16.0	0.2	7.8	80	4.5
142+75	RT	NORTH APARTMENT ENT.	BEGIN REMOVAL 10' FROM MAINLINE		700	78	15.6	0.2	7.6	78	4.4
146+00	LT	WILLOW WOOD WAY	BEGIN REMOVAL 12' FROM MAINLINE		492	55	10.9	0.2	5.4	55	3.1
152+50	RT	BIRCHWOOD PKWY.	BEGIN REMOVAL 22' FROM MAINLINE		990	110	22.0	0.3	10.8	110	6.2
155+80	LT	EVERGREEN LANE	BEGIN REMOVAL 22' FROM MAINLINE		836	93	18.6	0.3	9.1	93	5.2
159+20	RT	JANES COURT	BEGIN REMOVAL 22' FROM MAINLINE		814	90	18.1	0.3	8.9	90	5.1
165+50	RT	CRABTREE AVENUE	BEGIN REMOVAL 25' FROM MAINLINE		1225	136	27.2	0.4	13.3	136	7.6
167+00	LT	CRABTREE AVENUE	BEGIN REMOVAL 22' FROM MAINLINE		1078	120	24.0	0.4	11.7	120	6.7
169+15	RT	DALEWOOD PARKWAY	BEGIN REMOVAL 23' FROM MAINLINE		920	102	20.4	0.3	10.0	102	5.7
172+50	RT	CHARMINGFARE DRIVE	BEGIN REMOVAL 23' FROM MAINLINE		851	95	18.9	0.3	9.3	95	5.3
176+00	RT	JEWEL ENTRANCE	BEGIN REMOVAL 10' FROM MAINLINE		370	41	8.2	0.1	4.0	41	2.3
176+00	LT	SHOPING CENTER ENT.	BEGIN REMOVAL 13' FROM MAINLINE		416	46	9.2	0.1	4.5	46	2.6
							<b>4573</b>	<b>69</b>	<b>2241</b>	<b>22865</b>	<b>1280</b>
							GALLON	TON	TON	SY	TON

**RESURFACING LIMITS (BUTT JOINT SCHEDULE)**

STA.	SIDE	LOCATION	BUTT JOINT	PAVEMENT BUTT JOINT LENGTH (FT)	PAVEMENT BUTT JOINT WIDTH (FT)	40600982 HOT MIX ASPHALT SURFACE REMOVAL - BUTT JOINT (SQ. YD.)
127+68.5		83RD STREET		54	10	60
135+75	RT	SOUTH APARTMENT ENT.	BEGIN REMOVAL 10' FROM MAINLINE	44	10	49
142+75	RT	NORTH APARTMENT ENT.	BEGIN REMOVAL 10' FROM MAINLINE	44	10	49
146+00	LT	WILLOW WOOD WAY	BEGIN REMOVAL 12' FROM MAINLINE	28	10	31
152+50	RT	BIRCHWOOD PKWY.	BEGIN REMOVAL 22' FROM MAINLINE	35	10	39
155+80	LT	EVERGREEN LANE	BEGIN REMOVAL 22' FROM MAINLINE	25	10	28
159+20	RT	JANES COURT	BEGIN REMOVAL 22' FROM MAINLINE	25	10	28
165+50	RT	CRABTREE AVENUE	BEGIN REMOVAL 25' FROM MAINLINE	25	10	28
167+00	LT	CRABTREE AVENUE	BEGIN REMOVAL 22' FROM MAINLINE	25	10	28
169+15	RT	DALEWOOD PARKWAY	BEGIN REMOVAL 23' FROM MAINLINE	25	10	28
172+50	RT	CHARMINGFARE DRIVE	BEGIN REMOVAL 23' FROM MAINLINE	25	10	28
176+00	RT	JEWEL ENTRANCE	BEGIN REMOVAL 10' FROM MAINLINE	33	10	37
176+00	LT	SHOPPING CENTER ENT.	BEGIN REMOVAL 13' FROM MAINLINE	25	10	28
179+97		75TH STREET		120	10	133
						<b>592</b>
						SY

NOTE:  
ALL QUANTITIES SHOWN IN THE SCHEDULES ARE APPROXIMATE. THE ENGINEER WILL LOCATE ALL IMPROVEMENTS IN THE FIELD PRIOR TO CONSTRUCTION. PAYMENT SHALL BE BASED ON ACTUAL FIELD MEASUREMENTS.

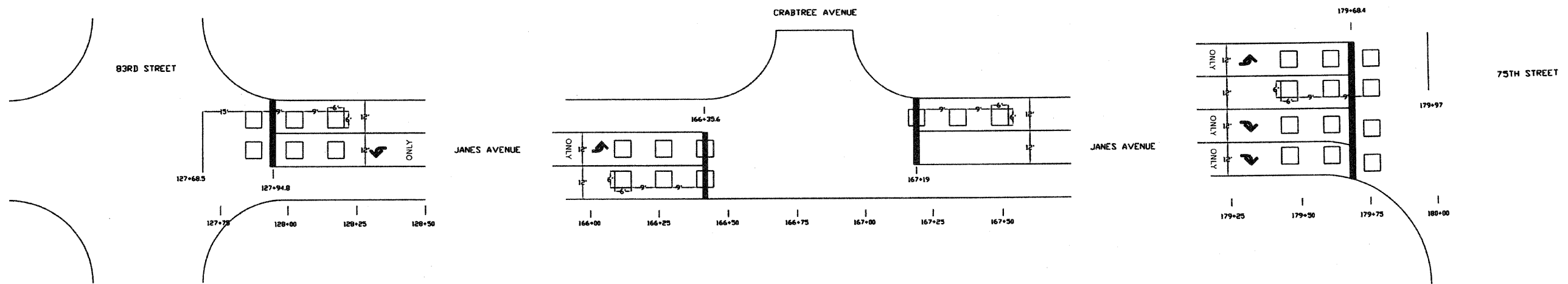
**VILLAGE OF WOODRIDGE PUBLIC WORKS**  
1 Plaza Drive, Woodridge IL 60517 (630) 719-4753

**JANES AVENUE  
REHABILITATION PROJECT  
RESURFACING SCHEDULE**

DRAWN BY: AF CHECKED BY: SM

CONTRACT NO. 63347

# DETECTOR LOOP DETAIL



DETECTOR LOOP SCHEDULE		
STA.	LOCATION/DIRECTION	88600100 DETECTOR LOOP TYPE 1 (FOOT)
128+00	83RD STREET LEFT TURN	120
128+00	83RD STREET STRAIGHT	140
166+25	CRABTREE LEFT TURN	110
166+25	CRABTREE STRAIGHT	145
167+25	CRABTREE STRAIGHT	120
179+80	75TH STREET LEFT TURN	180
179+80	75TH STREET STRAIGHT	195
179+80	75TH STREET RIGHT TURN	265
		<b>1275</b>
		FT

1" = 20'

NOTE:  
ALL QUANTITIES SHOWN IN THE SCHEDULES ARE APPROXIMATE. THE ENGINEER WILL LOCATE ALL IMPROVEMENTS IN THE FIELD PRIOR TO CONSTRUCTION. PAYMENT SHALL BE BASED ON ACTUAL FIELD MEASUREMENTS.

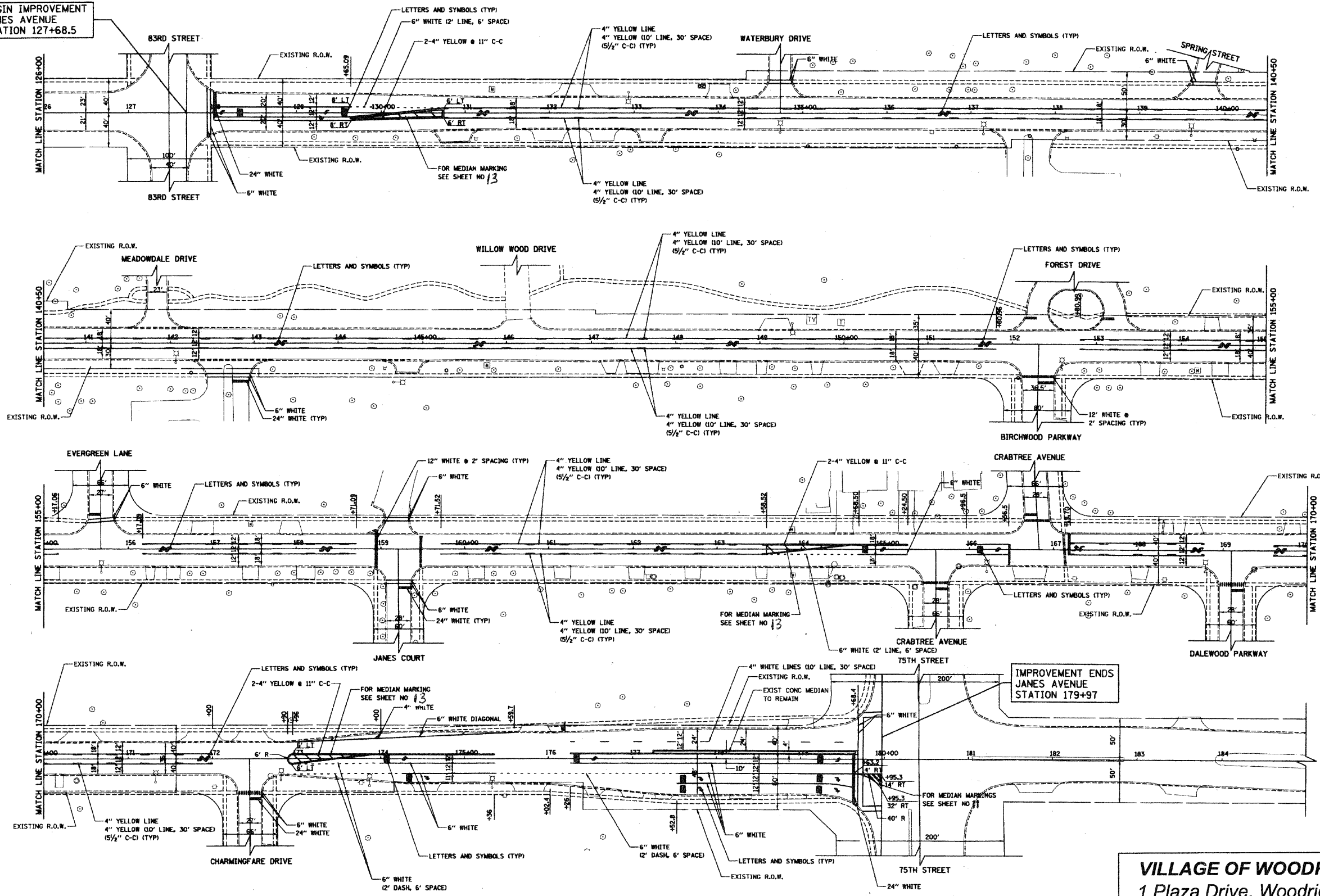
<b>VILLAGE OF WOODRIDGE PUBLIC WORKS</b> 1 Plaza Drive, Woodridge IL 60517 (630) 719-4753	
<b>JANES AVENUE REHABILITATION PROJECT</b>	
<b>DETECTOR LOOP DETAIL</b>	
DRAWN BY: AF	CHECKED BY: SM

SECTION	COUNTY	TOTAL SHEETS	SHEET NUMBER
09-00063-00-RS	DuPAGE	16	11

CONTRACT NO. 63347



BEGIN IMPROVEMENT  
JANES AVENUE  
STATION 127+68.5



IMPROVEMENT ENDS  
JANES AVENUE  
STATION 179+97

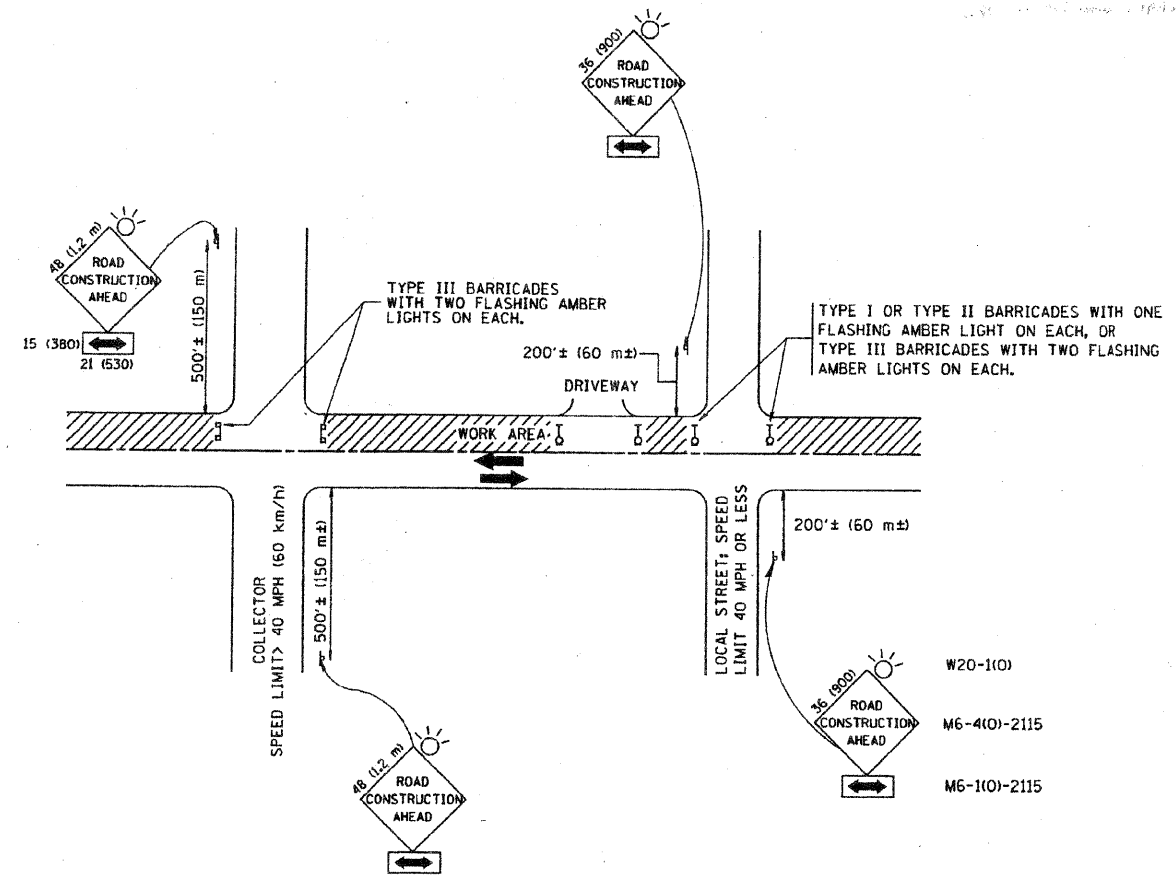
1" = 60'

**VILLAGE OF WOODRIDGE PUBLIC WORKS**  
 1 Plaza Drive, Woodridge IL 60517 (630) 719-4753

**JANES AVENUE  
 REHABILITATION PROJECT**

**PAVEMENT MARKING PLAN**

DRAWN BY: AF CHECKED BY: SM



TRAFFIC CONTROL AND PROTECTION FOR SIDE ROADS, INTERSECTIONS, AND DRIVEWAYS

NOTES:

A. FOR NO LANE RESTRICTION ON THE SIDE ROAD OR DRIVEWAYS

1. SIDE ROAD WITH A SPEED LIMIT OF 40 MPH (60 km/h) OR LESS AS SHOWN ON THE DRAWING AND AS DIRECTED BY THE ENGINEER:

- a) ONE ROAD CONSTRUCTION AHEAD SIGN 36 x 36 (900x900) WITH A FLASHER AND FLAG MOUNTED ON IT APPROXIMATELY 200' (60 m) IN ADVANCE OF THE MAIN ROUTE.
- b) THE CLOSED PORTION OF THE MAIN ROUTE SHALL BE PROTECTED BY BLOCKING WITH TYPE I, TYPE II OR TYPE III BARRICADES, 1/3 OF THE CROSS SECTION OF THE CLOSED PORTION.

2. SIDE ROAD WITH A SPEED LIMIT GREATER THAN 40 MPH (60 km/h) AS SHOWN ON THE DRAWING AND AS DIRECTED BY THE ENGINEER:

- a) ONE ROAD CONSTRUCTION AHEAD SIGN 48 x 48 (1.2 m x 1.2 m) WITH A FLASHER MOUNTED ON IT APPROXIMATELY 500' (150 m) IN ADVANCE OF THE MAIN ROUTE.
- b) THE CLOSED PORTION OF THE MAIN ROUTE SHALL BE PROTECTED BY BLOCKING WITH TYPE III BARRICADES, 1/2 OF THE CROSS SECTION OF THE CLOSED PORTION.

3. WHEN THE SIDE ROAD LIES BETWEEN THE BEGINNING OF THE MAINLINE SIGNING AND THE WORK ZONE, A SINGLE HEADED ARROW (M6-1) SHALL BE USED IN LIEU OF THE DOUBLE HEADED ARROW (M6-4).

B. FOR A LANE CLOSURE ON A SIDE ROAD OR DRIVEWAY:

USE APPLICABLE PORTIONS OF THE TYPICAL APPLICATION OF TRAFFIC CONTROL DEVICES (STD. 701501, STD. 701606 OR THE APPROPRIATE STANDARD). THE SPACING OF SIGNS AND BARRICADES SHALL BE ADJUSTED FOR FIELD CONDITIONS AS DIRECTED BY THE ENGINEER. THE DIRECTIONAL ARROW SHALL BE COVERED OR REMOVED WHEN NO LONGER CONSISTENT WITH THE SIDE ROAD LANE CLOSURE.

C. ADVANCE WARNING SIGNS ARE TO BE OMITTED ON DRIVEWAY UNLESS OTHERWISE NOTED.

D. THE TRAFFIC CONTROL AND PROTECTION FOR SIDE ROADS, INTERSECTIONS, AND DRIVEWAYS SHALL BE INCIDENTAL TO THE COST OF SPECIFIED TRAFFIC CONTROL STANDARDS OR ITEMS.

All dimensions are in millimeters (inches) unless otherwise shown.

FILE NAME = W:\data\22a34\1\1018.dgn	USER NAME = gaglianob	DESIGNED - LHA	REVISED - J. OBERLE 10-18-95
	PLLOT SCALE = 50.000 / IN.	DRAWN -	REVISED - A. HOUSEH 03-06-96
	PLLOT DATE = 1/4/2000	CHECKED -	REVISED - A. HOUSEH 10-15-96
		DATE - 06-89	REVISED - T. RAMMACHER 01-06-00

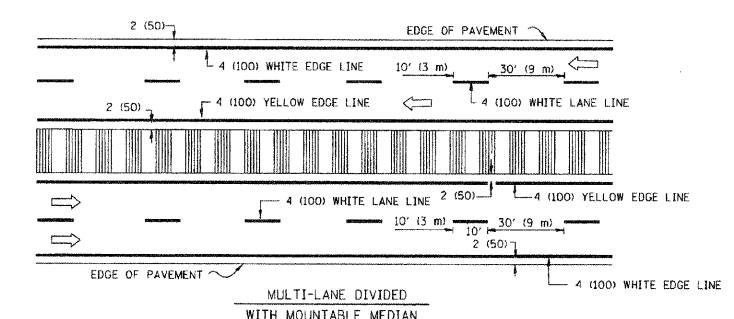
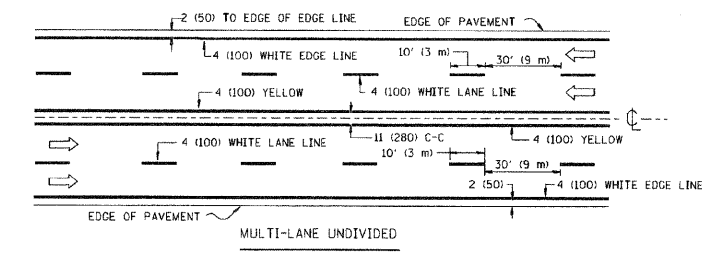
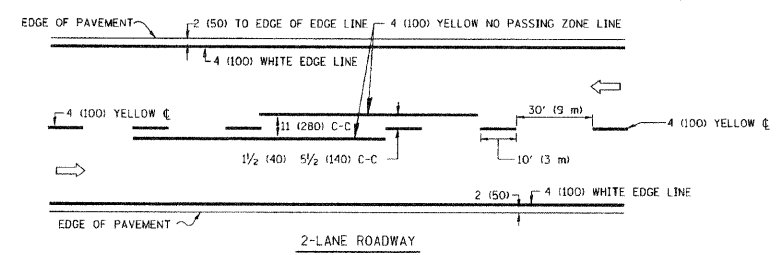
STATE OF ILLINOIS  
DEPARTMENT OF TRANSPORTATION

TRAFFIC CONTROL AND PROTECTION FOR  
SIDE ROADS, INTERSECTIONS, AND DRIVEWAYS

SCALE: NONE SHEET NO. 1 OF 1 SHEETS STA. TO STA.

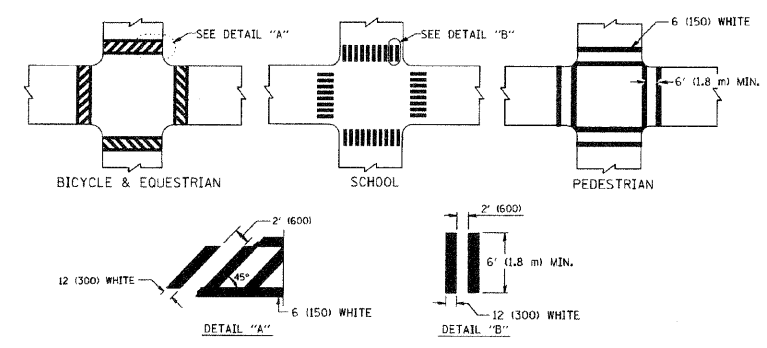
F.A. RTE.	SECTION	COUNTY	TOTAL SHEETS	SHEET NO.
	TC-10		116	12
FED. ROAD DIST. NO. 1 (ILLINOIS) FED. AID PROJECT			CONTRACT NO. 6337	

F.A.U. RTE.	SECTION	COUNTY	TOTAL SHEETS	SHEET NO.
2518	09-0063-00-05	DU PAGE	16	13
STA.		TO STA.		
FED. ROAD DIST. NO.		ILLINOIS FED. AID PROJECT		

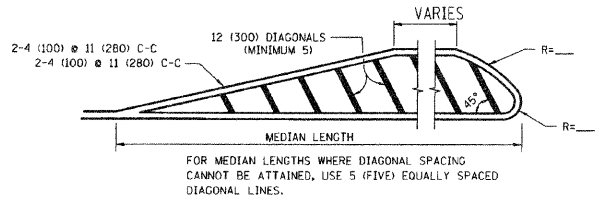
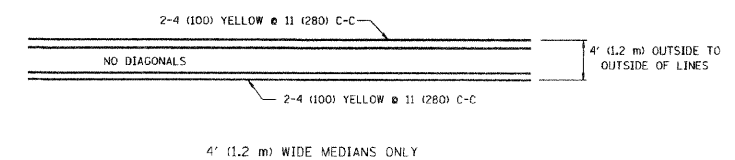


NOTE: MEDIANS WITH BARRIER CURB DO NOT REQUIRE AN EDGE LINE

TYPICAL LANE AND EDGE LINE MARKING

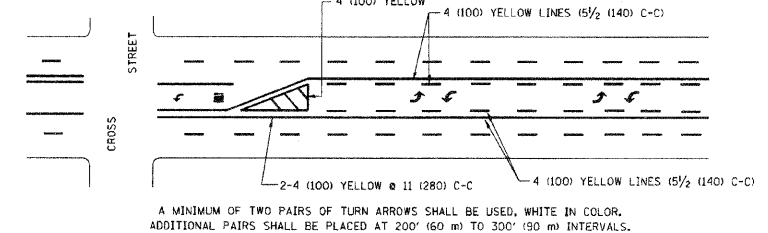


TYPICAL CROSSWALK MARKING



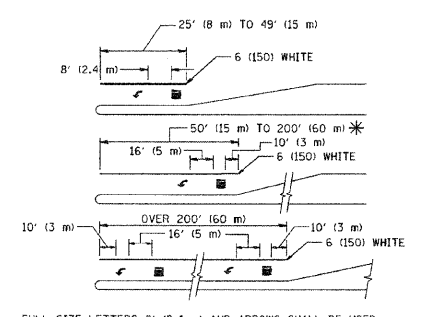
DIAGONAL LINE SPACING: 50' (15 m) C-C (LESS THAN 30MPH (50 km/h))  
75' (25 m) C-C 30MPH (50 km/h) TO 45MPH (70 km/h)  
150' (45 m) C-C (MORE THAN 45MPH (70 km/h))

MEDIANS OVER 4' (1.2 m) WIDE



A MINIMUM OF TWO PAIRS OF TURN ARROWS SHALL BE USED, WHITE IN COLOR. ADDITIONAL PAIRS SHALL BE PLACED AT 200' (60 m) TO 300' (90 m) INTERVALS.

TYPICAL PAINTED MEDIAN MARKING

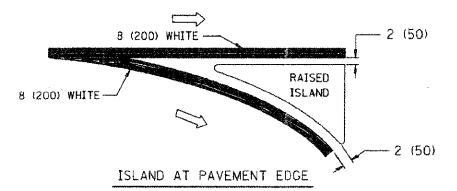
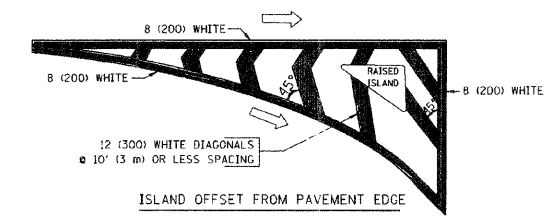


FULL SIZE LETTERS 8' (2.4 m) AND ARROWS SHALL BE USED.  
AREA = 15.6 SQ. FT. (1.5 m<sup>2</sup>) ONLY AREA = 20.8 SQ. FT. (1.9 m<sup>2</sup>)

\* TURN LANES IN EXCESS OF 400' (120 m) IN LENGTH MAY HAVE AN ADDITIONAL SET OF ARROW - "ONLY" INSTALLED MIDWAY BETWEEN THE OTHER TWO SETS OF ARROW - "ONLY".

TYPICAL LEFT (OR RIGHT) TURN LANE

TYPICAL TURN LANE MARKING



TYPICAL ISLAND MARKING

TYPE OF MARKING	WIDTH OF LINE	PATTERN	COLOR	SPACING / REMARKS
CENTERLINE ON 2 LANE PAVEMENT	4 (100)	SKIP-DASH	YELLOW	10' (3 m) LINE WITH 30' (9 m) SPACE
CENTERLINE ON MULTI-LANE UNDIVIDED PAVEMENT	2 @ 4 (100)	SOLID	YELLOW	11 (280) C-C
NO PASSING ZONE LINES: FOR ONE DIRECTION FOR BOTH DIRECTIONS	4 (100) 2 @ 4 (100)	SOLID SOLID	YELLOW YELLOW	5/2 (140) C-C FROM SKIP-DASH CENTERLINE 11 (280) C-C OMIT SKIP-DASH CENTERLINE BETWEEN
LANE LINES	4 (100) 5 (125) ON FREEWAYS	SKIP-DASH SKIP-DASH	WHITE WHITE	10' (3 m) LINE WITH 30' (9 m) SPACE
DOTTED LINES (EXTENSIONS OF CENTER, LANE OR TURN LANE MARKINGS)	SAME AS LINE BEING EXTENDED	SKIP-DASH	SAME AS LINE BEING EXTENDED	2' (600) LINE WITH 6' (1.8 m) SPACE
EDGE LINES	4 (100)	SOLID	YELLOW-LEFT WHITE-RIGHT	OUTLINE MOUNTABLE MEDIANS IN YELLOW; EDGE LINES ARE NOT USED NEXT TO BARRIER CURB
TURN LANE MARKINGS	6 (150) LINE; FULL SIZE LETTERS & SYMBOLS (8' (2.4m))	SOLID	WHITE	SEE TYPICAL TURN LANE MARKING DETAIL
TWO WAY LEFT TURN MARKING	2 @ 4 (100) EACH DIRECTION 8' (2.4m) LEFT ARROW	SKIP-DASH AND SOLID IN PAIRS	YELLOW WHITE	10' (3 m) LINE WITH 30' (9 m) SPACE FOR SKIP-DASH; 5/2 (140) C-C BETWEEN SOLID LINE AND SKIP-DASH LINE SEE TYPICAL TWO-WAY LEFT TURN MARKING DETAIL
CROSSWALK LINES (PEDESTRIAN) A. DIAGONALS (BIKE & EQUESTRIAN) B. LONGITUDINAL BARS (SCHOOL)	2 @ 6 (150) 12 (300) @ 45° 12 (300) @ 90°	SOLID SOLID SOLID	WHITE WHITE WHITE	NOT LESS THAN 6' (1.8 m) APART 2' (600) APART 2' (600) APART SEE TYPICAL CROSSWALK MARKING DETAILS.
STOP LINES	24 (600)	SOLID	WHITE	PLACE 4' (1.2 m) IN ADVANCE OF AND PARALLEL TO CROSSWALK, IF PRESENT. OTHERWISE, PLACE AT DESIRED STOPPING POINT. PARALLEL TO CROSSROAD CENTERLINE, WHERE POSSIBLE
PAINTED MEDIANS	2 @ 4 (100) WITH 12 (300) DIAGONALS @ 45° NO DIAGONALS USED FOR 4' (1.2 m) WIDE MEDIANS	SOLID	YELLOW; TWO WAY TRAFFIC WHITE; ONE WAY TRAFFIC	11 (280) C-C FOR THE DOUBLE LINE SEE TYPICAL PAINTED MEDIAN MARKING.
SCORE MARKING AND CHANNELIZING LINES	8 (200) WITH 12 (300) DIAGONALS @ 45°	SOLID	WHITE	DIAGONALS: 15' (4.5 m) C-C (LESS THAN 30MPH (50 km/h)) 20' (6 m) C-C 30MPH (50 km/h) TO 45MPH (70 km/h) 30' (9 m) C-C (OVER 45MPH (70 km/h))
RAILROAD CROSSING	24 (600) TRANSVERSE LINES; "RR" 15' (4.5 m) MIN. (1.8 m) LETTERS; 16 (400) LINE FOR "X"	SOLID	WHITE	SEE STATE STANDARD 780001 AREA OF: "X" = 3.6 SQ. FT. (0.33 m <sup>2</sup> ) EACH "X" = 54.0 SQ. FT. (5.0 m <sup>2</sup> )
SHOULDER DIAGONALS	12 (300) @ 45°	SOLID	WHITE - RIGHT YELLOW - LEFT	50' (15 m) C-C (LESS THAN 30MPH (50 km/h)) 75' (25 m) C-C (30 MPH (50 km/h) TO 45MPH (70 km/h)) 150' (45 m) C-C (OVER 45MPH (70 km/h))

FOR FURTHER DETAILS ON PAVEMENT MARKING REFER TO STANDARD SPECIFICATIONS FOR ROAD AND BRIDGE CONSTRUCTION AND STATE STANDARD 780001.

All dimensions are in inches (millimeters) unless otherwise shown.

REVISIONS	DATE
EVERS	03-19-90
T. RAMMACHER	10-27-94
C. JUCIUS	09-09-09

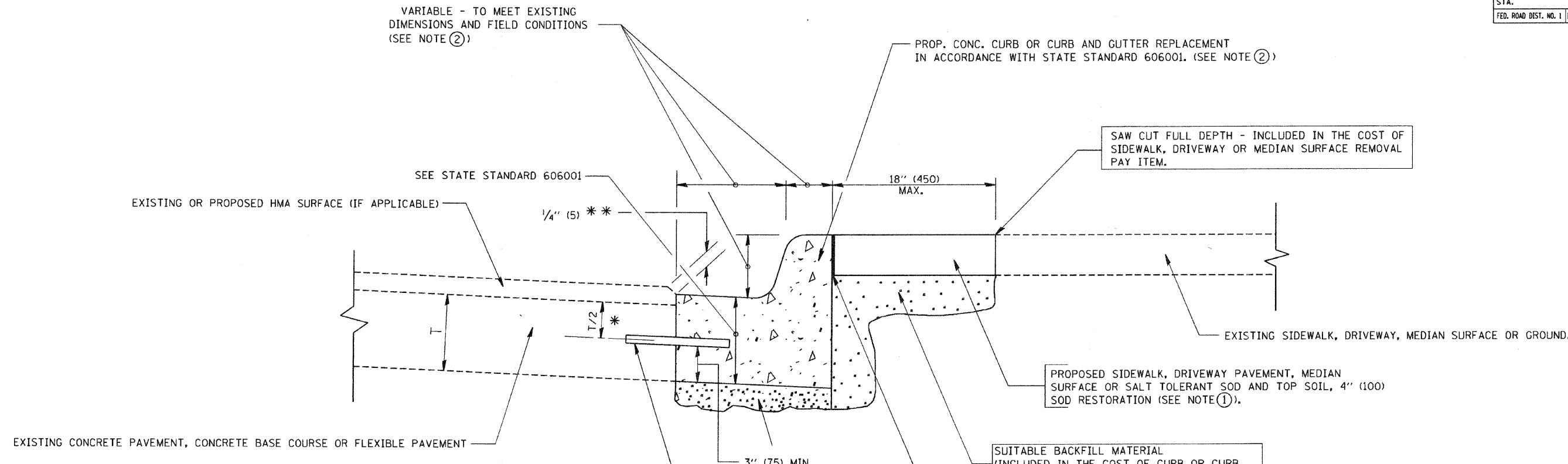
ILLINOIS DEPARTMENT OF TRANSPORTATION  
DISTRICT ONE  
TYPICAL PAVEMENT MARKINGS

SCALE: NONE

DRAWN BY CADD  
CHECKED BY  
TC-13

PLOT DATE = 9/9/2009  
FILE NAME = s:\p\work\project\design\4810836\A\13.dgn  
PLOT SCALE = 30.0000 / IN.  
USER NAME = brachung

F.A. RTE.	SECTION	COUNTY	TOTAL SHEETS	SHEET NO.
			16	14
STA.		TO STA.		
FED. ROAD DIST. NO. 1		ILLINOIS FED. AID PROJECT		



- \* 3" (75) MINIMUM FROM TOP AND BOTTOM OF THE CONCRETE PAVEMENT OR BASE COURSE.
- \*\* IF THE FINAL SURFACE OF THE PAVEMENT IS CONCRETE, THE GUTTER IS TO BE FLUSH WITH THE PAVEMENT.

NOTE: ① SIDEWALK, DRIVEWAY PAVEMENT OR MEDIAN SURFACE SHALL BE SIMILAR TO THE MATERIAL BEING REMOVED AND WILL BE PAID FOR SEPARATELY.

SALT TOLERANT SOD AND TOP SOIL, 4" (100) RESTORATION WILL NOT BE PAID FOR SEPARATELY, BUT SHALL BE INCLUDED IN THE COST OF CURB OR CURB AND GUTTER REMOVAL AND REPLACEMENT.

- ② CURB OR CURB AND GUTTER REPLACEMENT SHALL MATCH THE SHAPE OF THE EXISTING CURB OR CURB AND GUTTER UNLESS OTHERWISE SPECIFIED.
- ③ FOR CURB OR CURB AND GUTTER REMOVAL AND REPLACEMENT ADJACENT TO FLEXIBLE PAVEMENT DELETE EPOXY COATED TIE BARS.
- ④ LONGITUDINAL BARS, IF ENCOUNTERED IN THE EXISTING CURB OR CURB AND GUTTER, ARE NOT TO BE REPLACED. CUTTING AND REMOVING LONGITUDINAL BARS SHALL BE INCLUDED IN THE COST OF CURB OR CURB AND GUTTER REMOVAL AND REPLACEMENT.
- ⑤ THE COST OF HMA SURFACE REMOVAL IN THE EXISTING GUTTER FLAG SHALL BE INCLUDED IN THE COST OF THE CURB AND GUTTER REMOVAL AND REPLACEMENT.
- ⑥ THE REMOVAL AND REPLACEMENT OF THE EXISTING CURB OR CURB AND GUTTER SHALL BE DONE IN ACCORDANCE WITH THE APPLICABLE PORTIONS OF SECTION 440 AND 606 OF THE STANDARD SPECIFICATIONS.
- ⑦ THE LOCATIONS OF REMOVAL AND REPLACEMENT OF EXISTING CURB OR CURB AND GUTTER SHALL BE DETERMINED BY THE RESIDENT ENGINEER AT THE TIME OF CONSTRUCTION.

**BASIS OF PAYMENT:**  
THIS WORK WILL BE PAID FOR AT THE CONTRACT UNIT PRICE PER FOOT (METER) FOR "CURB REMOVAL AND REPLACEMENT" OR "COMBINATION CONCRETE CURB AND GUTTER REMOVAL AND REPLACEMENT".

ALL DIMENSIONS ARE IN INCHES (MILLIMETERS) UNLESS OTHERWISE SHOWN.

REVISIONS	
NAME	DATE
A. HOUSEH	03/11/94
R. SHAH	02/24/95
R. SHAH	03/02/95
R. SHAH	08/19/96
R. SHAH	09/12/96
R. SHAH	09/19/96
R. SHAH	10/03/96
A. ABBAS	03/21/97
M. GOMEZ	01/22/01
R. BORO	01/01/07

ILLINOIS DEPARTMENT OF TRANSPORTATION

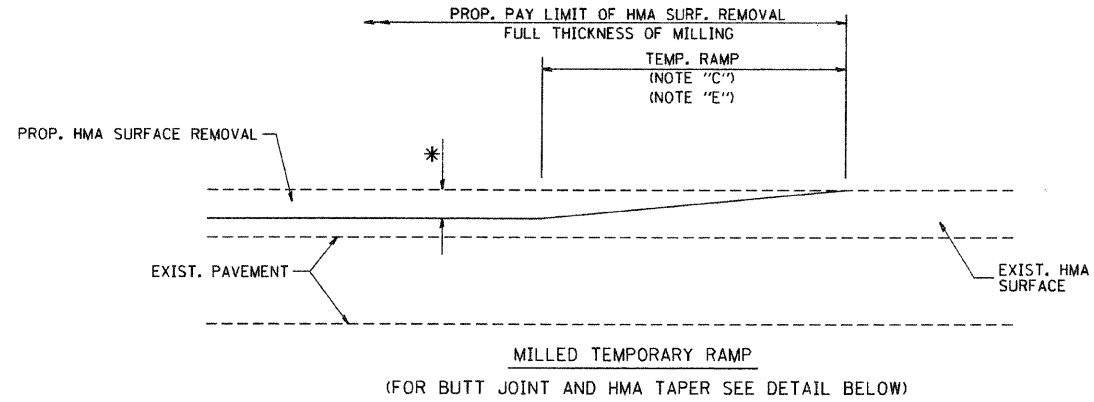
CURB OR CURB AND GUTTER REMOVAL AND REPLACEMENT

SCALE: VERT. NONE  
HORIZ. DRAWN BY  
CHECKED BY  
BD600-06 (BD-24)

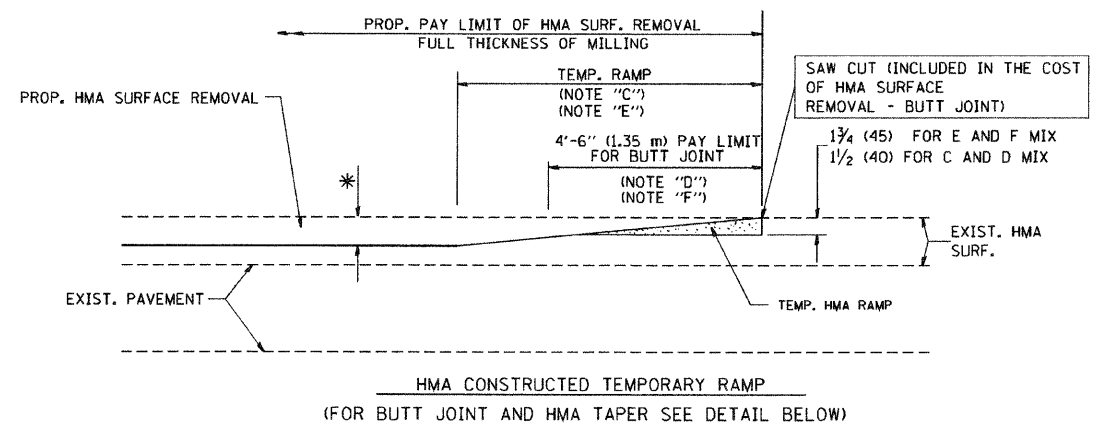
CURB OR CURB AND GUTTER REMOVAL AND REPLACEMENT

PLOT DATE = 3/15/2007  
FILE NAME = K:\data\bd600-06.dgn  
USER = R. BORO / IN.

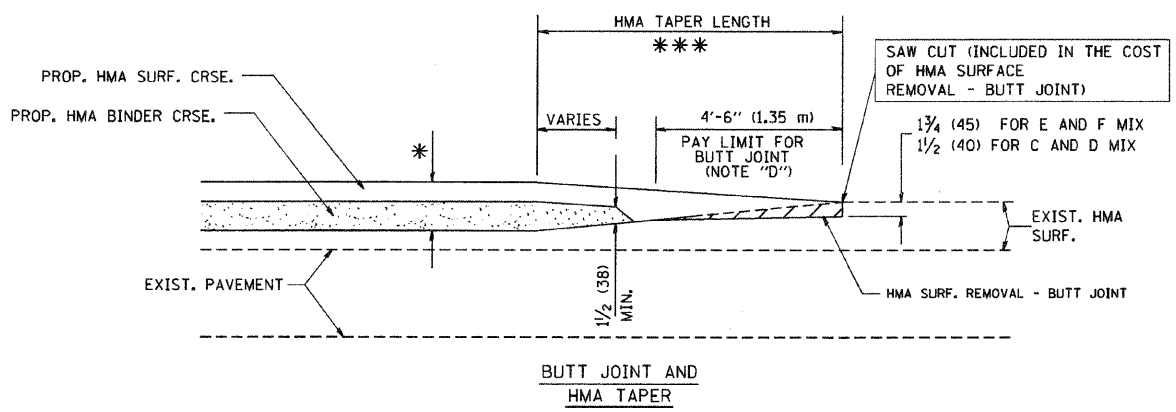
F.A. RTE.	SECTION	COUNTY	TOTAL SHEETS	SHEET NO.
			16	15
STA.		TO STA.		
FED. ROAD DIST. NO. 1 ILLINOIS FED. AID PROJECT				



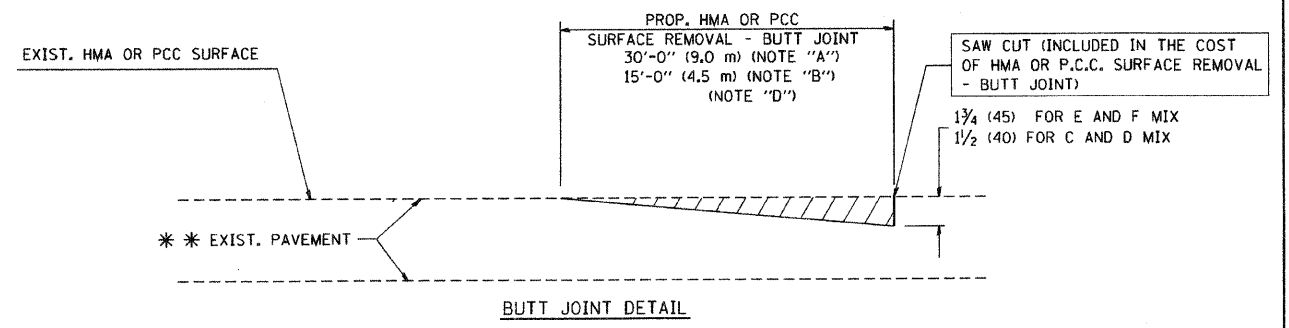
OPTION 1



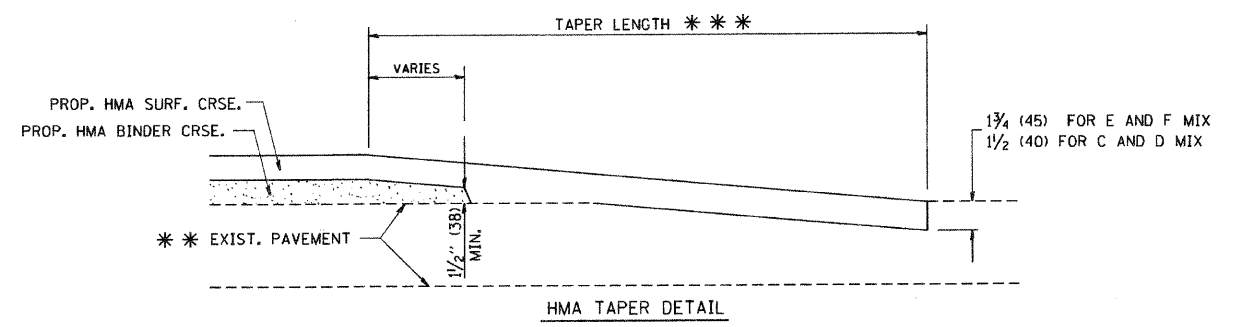
OPTION 2  
TYPICAL TEMPORARY RAMP



TYPICAL BUTT JOINT AND HMA TAPER FOR MILLING AND RESURFACING



BUTT JOINT DETAIL



TYPICAL BUTT JOINT AND HMA TAPER FOR RESURFACING ONLY

\*\*\* PC CONCRETE, HMA OR HMA RESURFACED PAVEMENT.

NOTES

- A: MAINLINE ROADWAYS AND MAJOR SIDE ROADS.
  - B: MINOR SIDE ROADS.
  - C: THE TEMP. RAMP SHALL BE CONSTRUCTED IMMEDIATELY UPON REMOVAL OF THE EXISTING HMA SURFACE.
  - D: THE BUTT JOINT SHALL BE CONSTRUCTED IMMEDIATELY PRIOR TO PLACING THE PROPOSED HMA COURSES.
  - E: TAPER THE TEMP. RAMP AT A RATE OF 3'-0" (900 mm) PER 1 INCH (25 mm) OF MILLING THICKNESS.
  - F: INSTALLATION AND REMOVAL OF THE 4'-6" (1.35 m) TEMP. RAMP IS INCLUDED IN COST OF HMA SURFACE REMOVAL - BUTT JOINT
  - G: SEE ARTICLE 406.08 AND 406.14 OF THE STANDARD SPECIFICATIONS FOR "HMA AND/OR PCC SURFACE REMOVAL, BUTT JOINT".
- \* SEE TYPICAL SECTIONS FOR MILLING THICKNESS.
- \*\*\* 20'-0" (6.1 m) PER 1 (25) RESURFACING (NOTE "A")  
10'-0" (3.0 m) PER 1 (25) RESURFACING (NOTE "B")

ALL DIMENSIONS ARE IN INCHES (MILLIMETERS) UNLESS OTHERWISE SHOWN.

BASIS OF PAYMENT:

THE BUTT JOINT WILL BE PAID FOR AT THE CONTRACT UNIT PRICE PER SQUARE YARD (SQUARE METER) FOR "HOT-MIX ASPHALT SURFACE REMOVAL - BUTT JOINT" OR FOR "PORTLAND CEMENT CONCRETE SURFACE REMOVAL - BUTT JOINT".

REVISIONS	
NAME	DATE
M. DE YONG	6-13-90
M. DE YONG	7-3-90
M. DE YONG	3-27-92
R. SHAH	09/09/94
R. SHAH	10/25/94
A. ABBAS	03/21/97
M. GOMEZ	04/06/01
R. BORO	01/01/07

ILLINOIS DEPARTMENT OF TRANSPORTATION

BUTT JOINT AND HMA TAPER DETAILS

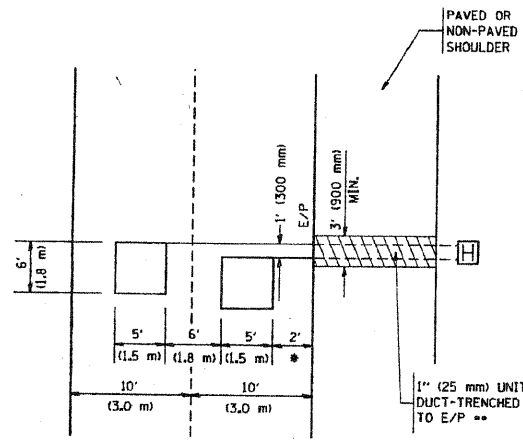
SCALE: VERT. NONE  
HORIZ. NONE

DRAWN BY  
CHECKED BY

PLT DATE = 3/4/2007  
FILE NAME = K:\dms\m\6347.dgn  
USER NAME = bborcel

**LOOPS NEXT TO SHOULDERS**

PROVIDE A PAVEMENT REPLACEMENT NOTE WHICH SHOULD EQUAL 3' (900 mm) X WIDTH OF PAVED SHOULDER.

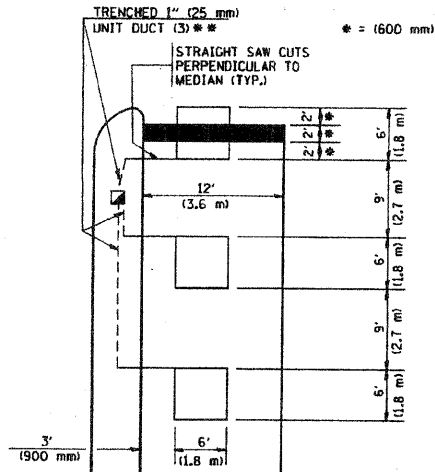


\*\* (600 mm)

\*\* UNIT DUCT IS TO BE SHOWN ON PLAN SHEETS BUT SHALL NOT BE INCLUDED IN THE PAY ITEMS.

**LEFT TURN LANES WITH MEDIANS  
VOLUME DENSITY ("FAR OUT" DETECTION)  
ON SAME APPROACH  
(PROTECTED / PERMITTED LEFT TURN PHASING)**

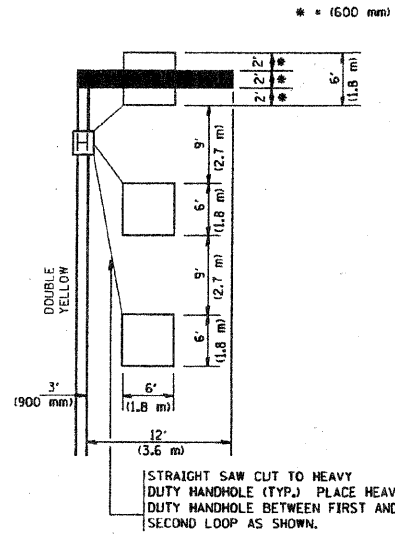
HANDHOLE LOCATION MAY VARY DEPENDING ON GEOMETRICS AND DESIGN OF TRAFFIC SIGNALS. HEAVY-DUTY HANDHOLES TO BE USED WHEN THE MEDIAN IS MOUNTABLE. REFER TO STANDARD 814001 TO ENSURE THAT HANDHOLE FITS IN MEDIAN.



\*\* UNIT DUCT IS TO BE SHOWN ON PLAN SHEETS BUT SHALL NOT BE INCLUDED IN THE PAY ITEMS.

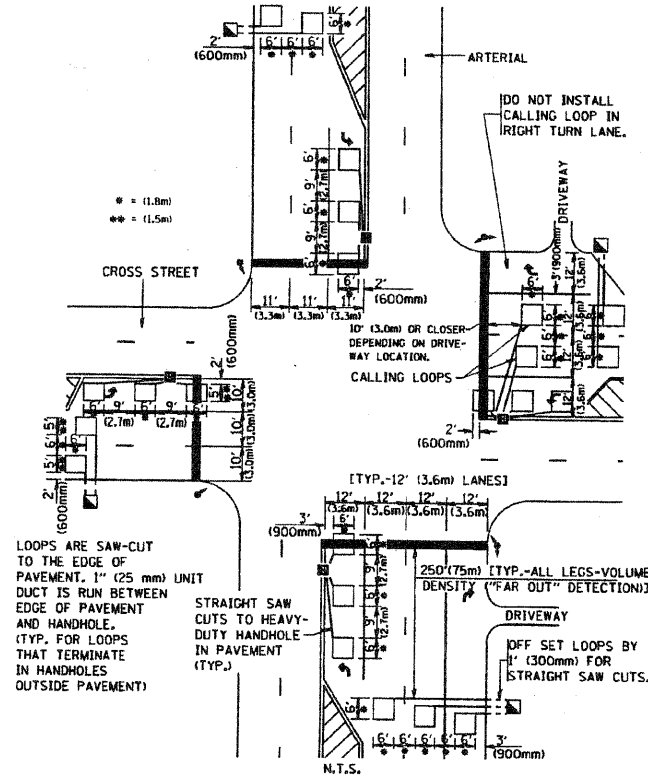
NOTE: DUAL LEFT TURNS NOT SHOWN REFER TO PLAN SHEET FOR DETECTOR LOOP REPLACEMENT

**LEFT TURN LANES WITHOUT MEDIANS  
VOLUME DENSITY ("FAR OUT" DETECTION)  
ON SAME APPROACH  
(PROTECTED / PERMITTED LEFT TURN PHASING)**



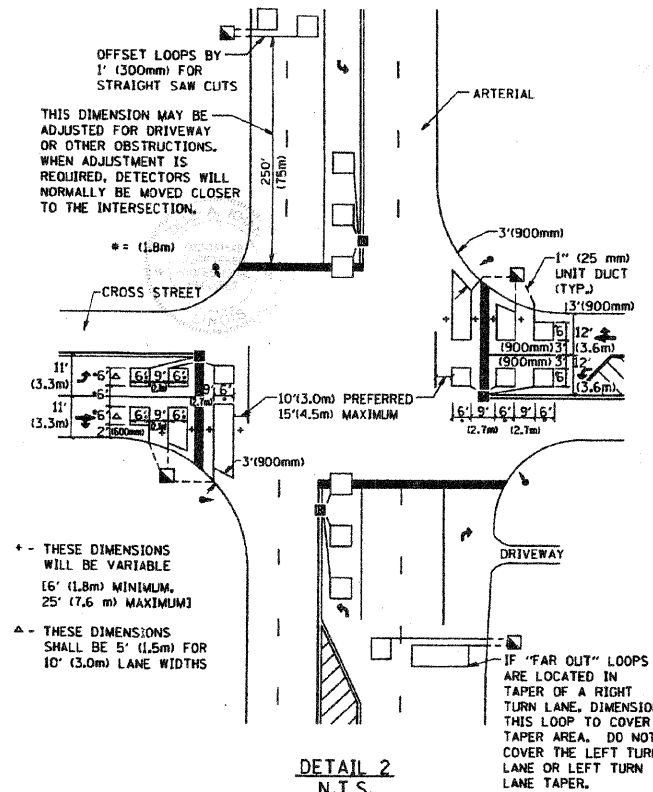
NOTE: DUAL LEFT TURNS NOT SHOWN REFER TO PLAN SHEET FOR DETECTOR LOOP REPLACEMENT

**ARTERIAL-VOLUME DENSITY ("FAR OUT" DETECTION)  
CROSS STREET-VOLUME DENSITY ("FAR OUT" DETECTION)**



DETAIL 1  
N.T.S.

**ARTERIAL-VOLUME DENSITY ("FAR OUT" DETECTION)  
CROSS STREET-NON VOLUME DENSITY ("UPTIGHT" PRESENCE DETECTION)**



DETAIL 2  
N.T.S.

**NOTES:**

**VEHICLES LOOP DETECTORS**

- \* ALL LEAD IN CABLE SHALL BE TWO CONDUCTOR NO. 14 TWISTED, SHIELDED.
- \* EACH DETECTOR LOOP SHALL HAVE ITS OWN SAW CUT FROM THE LOOP TO THE EDGE OF PAVEMENT OR TO A HANDHOLE IN THE PAVEMENT.
- \* EACH DETECTOR LOOP SHALL HAVE ITS OWN ONE INCH (25 mm) UNIT DUCT BETWEEN THE EDGE OF PAVEMENT AND THE FIRST HANDHOLE OR JUNCTION BOX. EACH UNIT DUCT RUN SHALL BE SHOWN ON THE PLANS BY THE DESIGNER, BUT SHALL NOT BE PAID FOR SEPARATELY. THIS ITEM IS INCIDENTAL TO THE PAY ITEM FOR DETECTOR LOOPS.
- \* ONE DIMENSION OF ALL DETECTOR LOOPS SHALL BE SIX FEET (1.8 m)
- \* EACH LANE OF NON-LOCKING, PRESENCE DETECTION AND EACH LANE OF A DOUBLE LEFT TURN LANE REQUIRES A SEPARATE INDUCTIVE LOOP DETECTOR AND LEAD IN CABLE.
- \* WHEN NON-LOCKING, PRESENCE DETECTION IS USED, MORE THAN ONE LOOP PER LANE IS REQUIRED BEHIND THE STOP BAR (i.e. 1-1/2, 1-3/4, 2).
- \* WHEN SYSTEM LOOPS ARE REQUIRED ON AN APPROACH OF AN INTERSECTION, THE LOOPS USED FOR VOLUME DENSITY AND INTERSECTION TIMING SHALL ALSO BE USED AS SYSTEM DETECTORS. EACH ONE OF THESE TYPE OF LOOPS REQUIRES A SEPARATE TWO CONDUCTOR NO. 14 TWISTED SHIELDED CABLE AND A SEPARATE INDUCTIVE LOOP DETECTOR WHEN NEW CONTROLLERS ARE UTILIZED. THE DESIGNER SHALL LABEL THESE TYPES OF LOOPS AS "INTERSECTION AND SAMPLING (SYSTEM) DETECTORS" ON THE SIGNAL LAYOUT, THE INTERCONNECT PLAN AND THE SYSTEM CABLE PLAN. WHEN AN EXISTING CONTROLLER IS UTILIZED FOR THIS TYPE OF DETECTION, THE PAY ITEM "INDUCTIVE LOOP DETECTOR WITH SYSTEM OUTPUT" SHOULD BE USED.

**PLACEMENT OF DETECTORS**

THE FOLLOWING FIGURES REPRESENT THE MOST COMMON DETECTOR LOOP LOCATIONS AND SIZES. ADJUSTMENTS WILL BE NECESSARY FOR SPECIFIC GEOMETRIC CONSIDERATIONS.

LOCATIONS AND DIMENSIONS OF DETECTOR LOOPS ARE REQUIRED ON ALL SIGNAL LAYOUT PLAN SHEETS.

"FAR OUT" DETECTION REFERS TO LOCKING, PRESENCE TYPE DETECTION LOCATED IN THRU LANES, RIGHT TURN LANES, AND RIGHT TURN LANE TAPER AREAS (IF APPLICABLE), USUALLY 250' (75 m) IN ADVANCE OF STOP BARS. "UPTIGHT" DETECTION REFERS TO NON-LOCKING PRESENCE TYPE DETECTION LOCATED IN ALL LANES AND 10'-15' (3.0 m-4.5 m) BEHIND THE CROSSING STREET'S EDGE OF PAVEMENT EXTENDED.

**NOTE:**

ALL DETAILS AND NOTES SHOWN ARE FROM THE I.D.O.T. DISTRICT 1 TRAFFIC SIGNAL DESIGN GUIDELINES DATED JANUARY 1995

THIS DRAWING HAS BEEN PREPARED TO ASSIST THE RESIDENT ENGINEER FOR ALL ROADWAY RESURFACING OR S.M.A.R.T. PROJECTS WHERE THE DIMENSIONS ARE NOT SHOWN ON THE PLANS AND THE FINAL LOCATIONS FOR CROSSWALKS OR STOP BARS ARE NOT DETERMINED.

FILE NAME = W:\distator\22\34\ts07.dgn	USER NAME = geglianob	DESIGNED -	REVISED -	<b>STATE OF ILLINOIS DEPARTMENT OF TRANSPORTATION</b>	<b>DISTRICT 1 - DETECTOR LOOP INSTALLATION DETAILS FOR ROADWAY RESURFACING</b>		F.A. RTE.	SECTION	COUNTY	TOTAL SHEETS	SHEET NO.
PLOT SCALE = 50.0000 / IN.	CHECKED - R.K.F.	REVISOR -	REVISOR -		SCALE: NONE	SHEET NO. 1	OF 1 SHEETS	STA.	TO STA.	110	110
PLOT DATE = 1/4/2008	DATE -	REVISOR -	REVISOR -						TS-07		CONTRACT NO. 63347