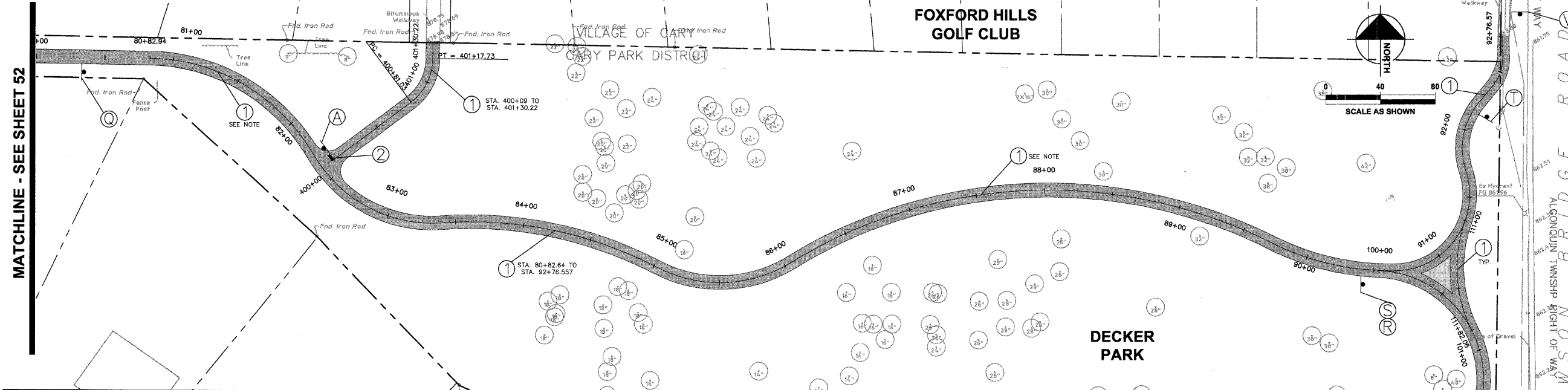


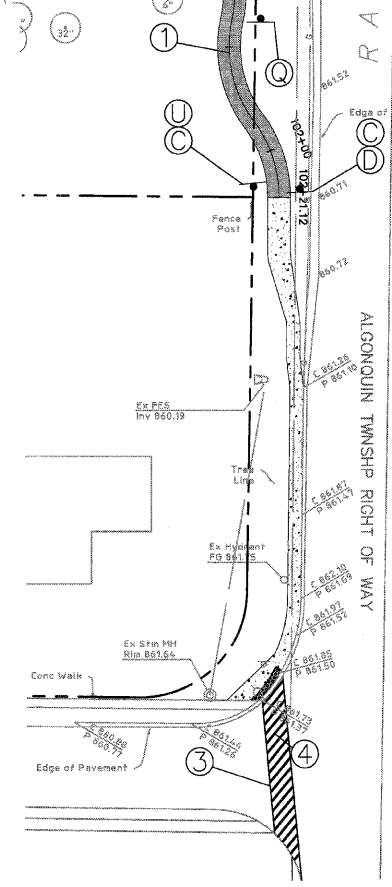
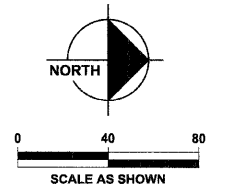
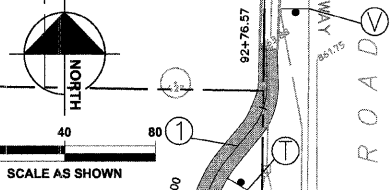
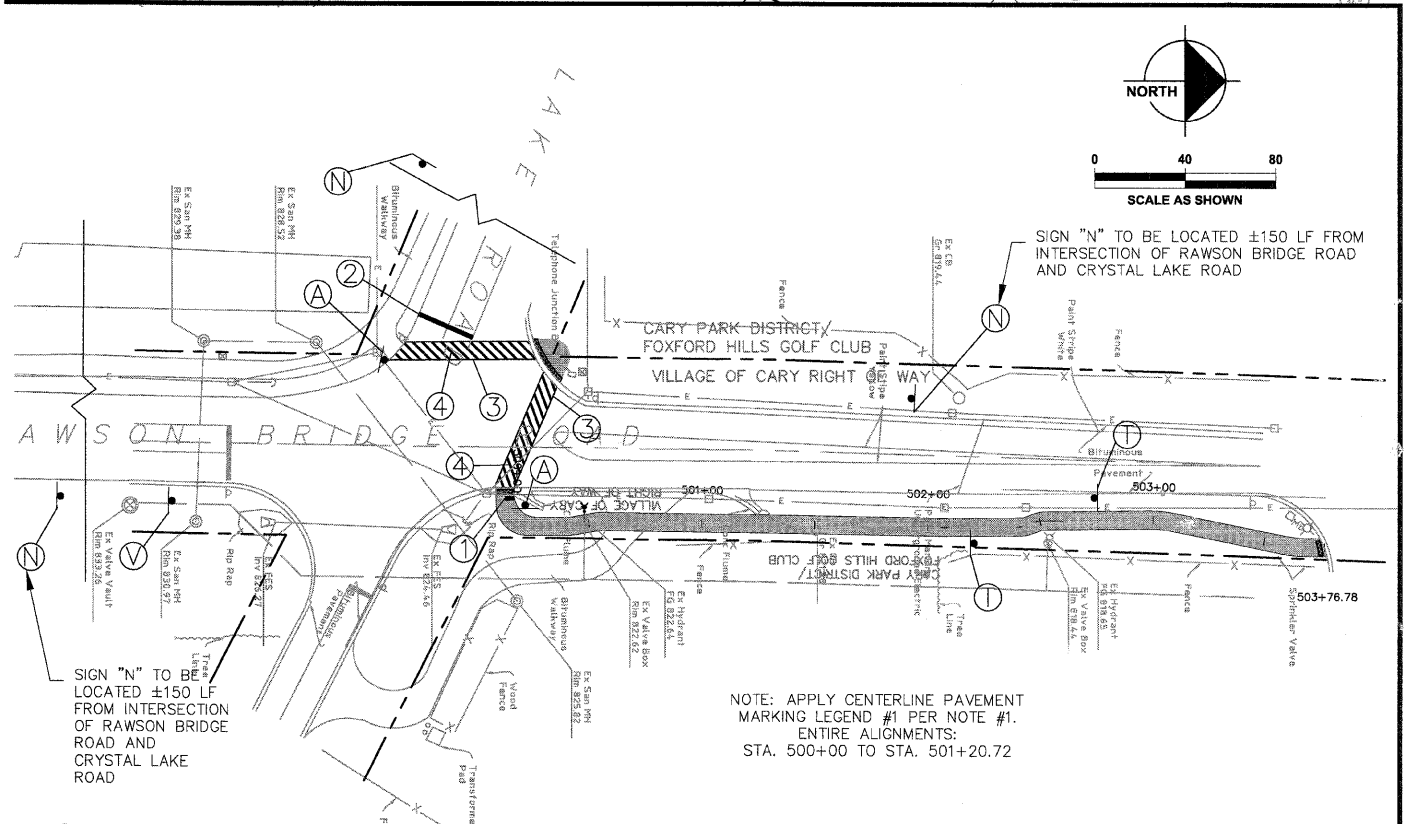
**FOXFORD HILLS GOLF CLUB**

**VILLAGE OF CARY**

**MATCHLINE - SEE SHEET 52**



- SIGNING NOTES:**
- ALL PROPOSED SIGNING AND PAVEMENT MARKING SHALL BE IN ACCORDANCE WITH THE MOST CURRENT EDITION OF EACH OF THE FOLLOWING DOCUMENTS AND ANY REVISION THERE TO:
    - A. MANUAL ON UNIFORM TRAFFIC CONTROL DEVICES
    - B. ILLINOIS DEPARTMENT OF TRANSPORTATION STANDARD SPECIFICATIONS FOR ROAD AND BRIDGE CONSTRUCTION
  - PROPOSED SIGN LOCATIONS ARE APPROXIMATE AND SHALL BE MODIFIED IN THE FIELD TO AVOID CONFLICT WITH UNDERGROUND UTILITIES OR OTHER OBSTRUCTIONS AND TO COMPLY WITH THE STANDARDS REFERENCED IN NOTE 1 ABOVE. SIGNS SHALL BE INSTALLED ONLY AFTER APPROVAL OF FINAL LOCATIONS BY CARY PARK DISTRICT.
  - CROSSWALK LONGITUDINAL LINES TO BE 6" WIDE. CROSSWALK DIAGONAL LINES TO BE 12" WIDE WITH 2' SPACING BETWEEN LINES. STOP BARS SHALL BE PLACED A MINIMUM OF 4' BEHIND CROSSWALKS.
  - SIGNS LISTED AND LABELED IN THE SIGN LEGEND ARE UNIQUE TO THE ALIGNMENTS SHOWN ON THIS SHEET.
  - PLACE SIGN A MINIMUM OF 3 FEET AND MAXIMUM OF 6 FEET FROM EDGE OF TRAIL.



**SIGN LEGEND**

SIGN LETTER	(A)	(C)	(D)	(N)	(Q)	(R)	(S)	(T)	(U)	(V)
SIGN	STOP	BIKE ROUTE	BEGIN	BIKE ROUTE	WINDING ROAD	N RAWSON BRIDGE RD S RAWSON BRIDGE RD	Y	BIKEWAY NARROWS	END	TRUCKS ENTERING HIGHWAY
NO.	R1-1	D11-1	M4-11	W11-1	W1-5	D1 - 1b	W2-5	W5-4a	M4-12	W21-1104
SIGN DIM.	18" x 18"	24" x 18"	12" x 4"	18" x 18"	18" x 18"	24" x 12" D4 LETTER SIZE	18" x 18"	18" x 18"	12" x 4"	18" x 18"

**SIGNING LEGEND**

- (X) PLACE NEW SIGN
- (■) DETECTABLE WARNINGS

**PAVEMENT MARKING LEGEND**

- ① THERMOPLASTIC PAVEMENT MARKING, 4" (100 mm) WHITE
- ② THERMOPLASTIC PAVEMENT MARKING, 24" (600 mm) WHITE
- ③ THERMOPLASTIC PAVEMENT MARKING, 6" (150 mm) WHITE
- ④ THERMOPLASTIC PAVEMENT MARKING, 12" (300 mm) WHITE

This document, together with the concepts and designs presented herein, is intended solely for the specific project and client for which it was prepared. Review drawings were prepared by J. J. Kelly, Inc. on 10/22/2009. No other use or reproduction is permitted without the written consent of J. J. Kelly, Inc.

DESIGNED - JWH	REVISED
DRAWN - LES	REVISED
CHECKED - JMM	REVISED
DATE - 10/02/2009	REVISED

**STATE OF ILLINOIS  
DEPARTMENT OF TRANSPORTATION**

**CARY PARK DISTRICT  
CARY COMMUNITY TRAIL**

**SIGNAGE AND STRIPING PLAN**  
 STA. 80+00 TO STA. 92+76.57  
 STA. 111+00 TO 111+82.06  
 STA. 100+00 TO 102+21.12  
 STA. 500+00 TO 503+76.78

SECTION	COUNTY	TOTAL SHEETS	SHEET NO.
06-P4001-00-BR	MCHENRY	64	53
FED. ROAD DIST. NO. 1	ILLINOIS	CONTRACT NO. 63333	

