

FOR INDEX OF SHEETS, SEE SHEET NO. 2

FOR INDEX OF HIGHWAY STANDARDS, SEE SHEET NO. 2

PROJECT LOCATED IN THE CITY OF OAK FOREST

STATE OF ILLINOIS
DEPARTMENT OF TRANSPORTATION
DIVISION OF HIGHWAYS

PLANS FOR PROPOSED
FEDERAL AID HIGHWAY

FAU ROUTE 1020 (LARAMIE AVENUE)
FAP 351 (US ROUTE 6 - 159TH STREET) TO FAU 1021 (155TH STREET)

LAPP RESURFACING
PROJECT No.: ARA-9003(375)
CITY OF OAK FOREST
SECTION No.: 09-00094-00-RS
JOB No: C-91-742-09
COOK COUNTY

F.A.U. RTE.	SECTION	COUNTY	TOTAL SHEETS	SHEET NO.
09-00094-00-RS	COOK	17	1	
STA. TO STA.				
FED. ROAD DIST. NO. C-91-742-09		ILLINOIS	FED AID PROJECT ARA-9003(375)	

*FAU 1020 LARAMIE AVENUE
CONTRACT NO. 63322



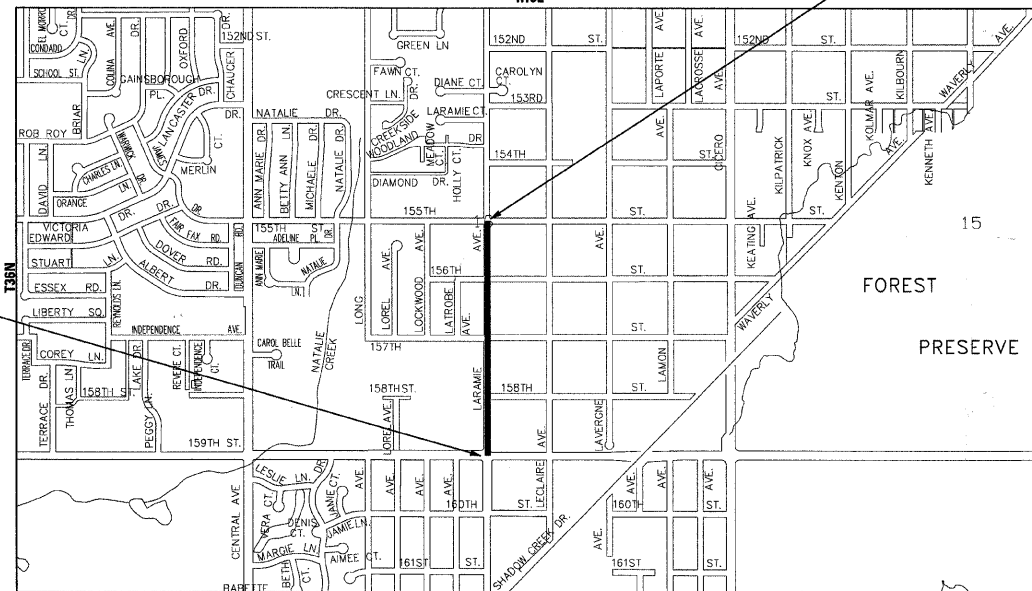
TRAFFIC DATA

LARAMIE AVENUE
POSTED SPEED LIMIT = 20 MPH
DESIGN SPEC LIMIT = 25 MPH
2006 ADT = 2,200 VPD

DESIGN DESIGNATION
COLLECTOR

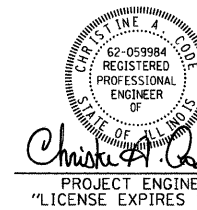
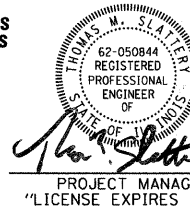
PROJECT NO.: ARA-9003(375)
FAU 1020 LARAMIE AVENUE
PROJECT BEGINS STA 10+82

LOCATION MAP
(NOT TO SCALE)



3RD PRINCIPAL MERIDIAN
LOCATION MAP
(NOT TO SCALE)

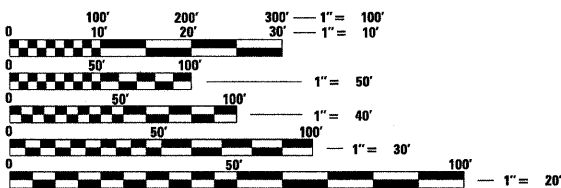
BREMEN TOWNSHIP
GROSS LENGTH OF IMPROVEMENT = 2,560 LF OR 0.485 MILES
NET LENGTH OF IMPROVEMENT = 2,560 LF OR 0.485 MILES



PROJECT MANAGER
"LICENSE EXPIRES 11-30-11"

PROJECT ENGINEER
"LICENSE EXPIRES 11-30-11"

BAXTER & WOODMAN, INC.
STATE OF ILLINOIS - PROFESSIONAL DESIGN FIRM
LICENSE NO. - 184-001121 - EXPIRES 4/30/2011



FULL SIZE PLANS HAVE BEEN PREPARED USING STANDARD
ENGINEERING SCALES. REDUCED SIZED PLANS WILL NOT
CONFORM TO STANDARD SCALES. IN MAKING MEASUREMENTS
ON REDUCED PLANS, THE ABOVE SCALES MAY BE USED.

J.U.L.I.E.
JOINT UTILITY LOCATION INFORMATION FOR EXCAVATION
1-800-892-0123

STATE OF ILLINOIS
DEPARTMENT OF TRANSPORTATION
DIVISION OF HIGHWAYS

APPROVED OCTOBER 8 2009
James Salter
DIRECTOR OF PUBLIC WORKS

PASSED OCTOBER 26 2009
Christine Cole
DISTRICT 1 ENGINEER OF LOCAL ROADS & STREETS

RELEASING FOR BID
BASED ON LIMITED
REVIEW OCTOBER 26, 2009
Diana M. O'Keefe
DEPUTY DIRECTOR OF HIGHWAYS, REGION 1 ENGINEER

PRINTED BY THE AUTHORITY
OF THE STATE OF ILLINOIS

CONTRACT NO. 63322

Burlington, Wisconsin 262.763.7834
Crystal Lake, Illinois 815.459.1260
DeKalb, Illinois 815.787.3111
Itasca, Illinois 630.773.1870
Mokena, Illinois 708.560.7070
Grayslake, Illinois 847.223.5088
Plainfield, Illinois 815.609.7425
Madison, Wisconsin 608.347.1542
Chicago, Illinois 312.578.0050

(OFFICE WHICH PREPARED PLANS)

B&W PROJECT NO.: 090312.40 DATE: 10-06-09

COPYRIGHT © 2009 BY BAXTER & WOODMAN, INC.
STATE OF ILLINOIS - PROFESSIONAL DESIGN FIRM
PROJECT NO. - B&W-090312.40
DATE: 10/06/09
FIELD ENGINEER MELCHOR MANGOBA, P.E. (847-705-4408)

GENERAL NOTES

- THE CONTRACTOR SHALL PROTECT AND CAREFULLY PRESERVE ALL SECTION OR SUBSECTION MONUMENTS OR PROPERTY OR REFERENCE MARKERS UNTIL THE OWNER, HIS AGENT OR AN AUTHORIZED SURVEYOR HAS WITNESSED OR OTHERWISE REFERENCED THEIR LOCATIONS.
- ALL LOCATIONS OF PUBLIC AND PRIVATE UTILITIES SHOWN ON PLANS ARE APPROXIMATE. THE CONTRACTOR SHALL BE RESPONSIBLE FOR CONTACTING THE OWNERS OF ALL EXISTING UTILITIES SO THAT THE UTILITIES AND THEIR APPURTENANCES MAY BE LOCATED AND ADJUSTED OR MOVED, IF NECESSARY, PRIOR TO THE START OF CONSTRUCTION OPERATIONS. THE CONTRACTOR SHALL COOPERATE WITH ALL UTILITY OWNERS AS PROVIDED IN THE STANDARD SPECIFICATIONS.
- THE CONTRACTOR SHALL BE RESPONSIBLE FOR THE PROTECTION OF ALL UNDERGROUND OR SURFACE UTILITIES EVEN THOUGH THEY MAY NOT BE SHOWN ON THE PLANS. ANY UTILITY THAT IS DAMAGED DURING CONSTRUCTION SHALL BE REPAIRED TO THE SATISFACTION OF THE ENGINEER OR THE OWNER OR REPLACED. THIS WORK SHALL BE AT THE CONTRACTOR'S EXPENSE.
- ALL SAW CUTTING SHALL BE INCLUDED IN THE UNIT COST OF THE PAY ITEM INDICATED FOR REMOVAL.
- ALL CONSTRUCTION PERSONNEL WILL BE REQUIRED TO WEAR A FLUORESCENT VEST PER ARTICLE 701.12 AND 701.13 OF THE STANDARD SPECIFICATIONS AT ALL TIMES WHILE ON THE CONSTRUCTION SITE. COMPLIANCE WITH THIS REQUIREMENT SHALL BE INCLUDED IN THE CONTRACT.
- NO STREET CLOSURES WILL BE ALLOWED.
- THE CONTRACTOR SHALL REPLACE ALL STREET SIGNS AND MAIL BOXES REMOVED DURING CONSTRUCTION AS NEAR AS POSSIBLE TO THEIR ORIGINAL LOCATION OR AS DETERMINED BY THE ENGINEER. THIS WORK SHALL BE INCLUDED IN THE CONTRACT.
- ALL OPEN HOLE, BROKEN PAVEMENT AND TRENCHES RESULTING FROM STRUCTURE ADJUSTMENTS, OR CURB REPAIRS WORK SHALL BE BACKFILLED TO GRADE BY THE END OF THE DAY.
- BEFORE STARTING ANY EXCAVATION, THE CONTRACTOR SHALL CALL "JULIE" AT 800-892-0123 FOR FIELD LOCATIONS OF BURIED ELECTRIC, TELEPHONE AND GAS FACILITIES. (48 HOURS NOTIFICATION IS REQUIRED)
- 10 FEET TRANSITIONS SHALL BE USED TO MATCH PROPOSED CURB AND GUTTER AND MEDIAN ITEMS OF WORK TO EXISTING CURB AND GUTTER AND MEDIANS IN THE FIELD, UNLESS OTHERWISE SHOWN. THE TRANSITIONS SHALL BE PAID FOR AT THE CONTRACT UNIT PRICE FOR THE PROPOSED ITEMS OF WORK SPECIFIED.
- THE CONTRACTOR SHALL COORDINATE CONSTRUCTION ACTIVITIES WITH THE UTILITY COMPANIES AND THE CITY OF OAK FOREST PUBLIC WORKS DEPARTMENT, AND BAXTER AND WOODMAN, INC.
- BARRICADE: THE CONTRACTOR SHALL PROVIDE AND INSTALL TWO (2) WEIGHTED SANDBAGS ON EACH TYPE I OR TYPE II BARRICADE USED - ONE (1) WEIGHTED SANDBAGS ACROSS EACH BOTTOM RAIL.
- BUTT JOINTS WILL BE INSTALLED AT THE ENDS OF ALL RESURFACING (WHERE RESURFACING MEETING EXISTING PAVEMENT), IN ACCORDANCE WITH THE "BUTT JOINT AND HMA TAPER DETAILS" SHEET INCLUDED IN THE PLANS, UNLESS OTHERWISE SPECIFIED.
- DRIVEWAYS SHALL REMAIN ACCESSIBLE DURING THE ENTIRE DURATION OF THE PROJECT.
- THE CONTRACTOR SHALL NOTIFY CITY PUBLIC WORKS AT LEAST 48 HOURS IN ADVANCE OF BEGINNING WORK TO OBTAIN CITY UTILITY LOCATIONS AND SHALL COORDINATE ALL CONSTRUCTION OPERATIONS WITH THE ENGINEER.
- MATERIALS RESULTING FROM THE REMOVAL OF PAVEMENT, DRIVEWAYS, CURB AND GUTTER, HOT-MIX ASPHALT SURFACES, ETC. SHALL BE REMOVED AT THE END OF EACH DAY TO AN APPROVED SITE. IN THE JUDGMENT OF THE CITY, SHOULD IT BE NECESSARY TO REMOVE SUCH MATERIALS, THE CITY WILL HAVE THE MATERIAL REMOVED AND THE CONTRACTOR WILL BE BILLED (CHARGED) ACCORDINGLY.
- THE CONTRACTOR MAY OBTAIN MUNICIPAL WATER IN BULK, AT NO CHARGE, AS LONG AS THERE IS NOT A "WATERING" BAN IN EFFECT. THE INDISCRIMINATE USE OF FIRE HYDRANTS IS STRICTLY PROHIBITED. WATER FOR CONSTRUCTION SHALL BE METERED OR OTHERWISE ACCOUNTED FOR AND A DAILY LOG MAINTAINED. THE CONTRACTOR SHALL PROVIDE THE WATER TRUCK AND DRIVER REQUIRED TO OBTAIN AND TRANSPORT THIS WATER. THE CITY RESERVES THE RIGHT TO RESTRICT OR REFUSE THE USE OF CITY WATER IF DEEMED NECESSARY.
- IT WILL BE THE CONTRACTOR'S RESPONSIBILITY TO NOTIFY RESIDENTS AND THE CITY WHEN ACCESS TO THEIR DRIVEWAYS WILL BE TEMPORARILY CLOSED DUE TO CURB AND GUTTER AND/OR DRIVEWAY REPLACEMENT. THE CONTRACTOR SHALL DISTRIBUTE NOTICES PROVIDED BY THE CITY TO RESIDENTS. EVERY EFFORT SHALL BE MADE TO ACCOMMODATE ACCESS TO THESE PROPERTIES INCLUDING KNOCKING ON DOORS WHEN DRIVEWAYS ARE ABOUT TO BE CLOSED.
- IN AREAS WHERE THE EXISTING DRIVEWAY OR SIDEWALK TO BE REMOVED AND REPLACED, THE REMOVAL AND DISPOSAL OF ANY ADDITIONAL MATERIAL REQUIRED TO ESTABLISH THE PROPOSED DRIVEWAY SUBGRADE ELEVATION SHALL BE INCLUDED IN THE PAY ITEM FOR PORTLAND CEMENT CONCRETE DRIVEWAY REMOVAL AND REPLACEMENT.
- THE CONTRACTOR SHALL LIMIT THE WORK TO ONE SIDE OF THE STREET UNLESS AS DIRECTED OTHERWISE BY THE ENGINEER.

- ALL CONSTRUCTION SHALL BE DONE IN ACCORDANCE WITH THE DETAILS IN THE PLANS, THE SPECIAL PROVISIONS INCLUDED IN THE CONTRACT DOCUMENTS, AND THE LATEST EDITION OF THE FOLLOWING STATE OF ILLINOIS SPECIFICATIONS: "THE STANDARD SPECIFICATIONS FOR ROAD AND BRIDGE CONSTRUCTION" (REFERRED TO AS THE "STANDARD SPECIFICATIONS"), THE "SUPPLEMENTAL SPECIFICATIONS AND RECURRING SPECIAL PROVISIONS", THE "MANUAL ON UNIFORM TRAFFIC CONTROL DEVICES FOR STREETS AND HIGHWAYS", THE "MANUAL ON TEST PROCEDURES FOR MATERIALS" AND THE "STANDARD SPECIFICATIONS FOR WATER AND SEWER MAIN CONSTRUCTION IN ILLINOIS".

INDEX OF SHEETS

SHEET NO.	TITLE
1	COVER SHEET
2	GENERAL NOTES, INDEX OF SHEETS, HIGHWAY STANDARDS, SUMMARY OF QUANTITIES
3	SCHEDULE OF MATERIALS
4-6	TYPICAL SECTIONS
7-9	PLAN SHEETS
10	DETECTOR LOOP REPLACEMENT DETAIL
11	DISTRICT 1 DETAIL - BD-24 CURB OR CURB AND GUTTER REMOVAL AND REPLACEMENT
12	DISTRICT 1 DETAIL - BD-32 BUTT JOINT AND HMA TAPER DETAILS
13	DISTRICT 1 DETAIL - TC-10 TRAFFIC CONTROL AND PROTECTION FOR SIDE ROADS, INTERSECTIONS, AND DRIVEWAYS
14	DISTRICT 1 DETAIL - TC-13 DISTRICT 1 TYPICAL PAVEMENT MARKINGS
15	DISTRICT 1 DETAIL - TC-18 SIGNING FOR FLAGGING OPERATIONS AT WORK ZONE OPENINGS
16	DISTRICT 1 DETAIL - TC-22 TEMPORARY INFORMATION SIGNING
17	DISTRICT 1 DETAIL - TS-07 DETECTOR LOOP INSTALLATION DETAILS FOR ROADWAY RESURFACING

HIGHWAY STANDARDS

000001-05	STANDARD SYMBOLS, ABBREVIATIONS, AND PATTERNS
424001-05	CURB RAMPS FOR SIDEWALKS
442101-07	CLASS B PATCHES
442201-03	CLASS C AND D PATCHES
602301-02	INLET - TYPE A
604001-03	FRAMES AND LIDS, TYPE 1
606001-04	CONCRETE CURB TYPE B AND COMBINATION CONCRETE CURB AND GUTTER
701501-05	URBAN LANE CLOSURE, 2L 2W UNDIVIDED
701801-04	LANE CLOSURE MULTILANE 1W OR 2W CROSSWALK OR SIDEWALK CLOSURE
701901-01	TRAFFIC CONTROL DEVICES
886001-01	DETECTOR LOOP INSTALLATIONS
886006-01	TYPICAL LAYOUTS FOR DETECTION LOOPS

SUMMARY OF QUANTITIES

CODE NO.	PAY ITEM	UNIT	QUANTITY CONSTRUCTION CODE 1000
35101600	AGGREGATE BASE COURSE, TYPE B 4"	SQ YD	179
40300100	BITUMINOUS MATERIALS (PRIME COAT)	GALLON	1078
40600300	AGGREGATE (PRIME COAT)	TON	22
40600400	MIXTURE FOR CRACKS, JOINTS, AND FLANGEWAYS	TON	10
40600625	LEVELING BINDER (MACHINE METHOD), N50	TON	453
40600982	HOT-MIX ASPHALT SURFACE REMOVAL - BUTT JOINT	SQ YD	524
40600985	PORTLAND CEMENT CONCRETE SURFACE REMOVAL - BUTT JOINT	SQ YD	107
40603310	HOT-MIX ASPHALT SURFACE COURSE, MIX "C", N50	TON	906
42400200	PORTLAND CEMENT CONCRETE SIDEWALK 5 INCH	SQ FT	1604
42400800	DETECTABLE WARNINGS	SQ FT	48
44000198	HOT-MIX ASPHALT SURFACE REMOVAL, VARIABLE DEPTH	SQ YD	3172
44000600	SIDEWALK REMOVAL	SQ FT	1606
44001700	COMBINATION CONCRETE CURB AND GUTTER REMOVAL AND REPLACEMENT	FOOT	1752
44200970	CLASS B PATCHES, TYPE II, 10 INCH	SQ YD	40
44200974	CLASS B PATCHES, TYPE III, 10 INCH	SQ YD	101
44200976	CLASS B PATCHES, TYPE IV, 10 INCH	SQ YD	91
44201723	CLASS D PATCHES, TYPE IV, 6 INCH	SQ YD	117
44300300	AREA REFLECTIVE CRACK CONTROL TREATMENT, SYSTEM A	SQ YD	10776
60255500	MANHOLES TO BE ADJUSTED	EACH	6
60266600	VALVE BOXES TO BE ADJUSTED	EACH	4
60260100	INLETS TO BE ADJUSTED	EACH	17
60262700	INLETS TO BE RECONSTRUCTED	EACH	5
60403600	GRATES, SPECIAL	EACH	13
60406000	FRAMES AND LIDS, TYPE 1, OPEN LID	EACH	4
67100100	MOBILIZATION	L SUM	1
70102620	TRAFFIC CONTROL AND PROTECTION, STANDARD 701501	L SUM	1
70102640	TRAFFIC CONTROL AND PROTECTION, STANDARD 701801	L SUM	1
78000100	THERMOPLASTIC PAVEMENT MARKING - LETTERS AND SYMBOLS	SQ FT	64
78000200	THERMOPLASTIC PAVEMENT MARKING - LINE 4"	FOOT	430
78000400	THERMOPLASTIC PAVEMENT MARKING - LINE 6"	FOOT	482
78000600	THERMOPLASTIC PAVEMENT MARKING - LINE 12"	FOOT	120
78000650	THERMOPLASTIC PAVEMENT MARKING - LINE 24"	FOOT	120
88600600	DETECTOR LOOP REPLACEMENT	FOOT	115
X0321556	SANITARY MANHOLES TO BE ADJUSTED	EACH	10
X0322256	TEMPORARY INFORMATIONAL SIGNING	SQ FT	52
XX000372	TEMPORARY AGGREGATE	TON	30
X0325808	PORTLAND CEMENT CONCRETE SURFACE REMOVAL 2"	SQ YD	66
X4400100	PORTLAND CEMENT CONCRETE SURFACE REMOVAL (VARIABLE DEPTH)	SQ YD	811
XX003435	PORTLAND CEMENT CONCRETE DRIVEWAY REMOVAL AND REPLACEMENT	SQ YD	184
XX007278	PARKWAY RESTORATION	SQ YD	656
XX007366	HOT-MIX ASPHALT SURFACE REMOVAL AND REPLACEMENT, 3"	SQ YD	136
XX006947	HOT-MIX ASPHALT DRIVEWAY REMOVAL AND REPLACEMENT	SQ YD	305

* INDICATES SPECIALTY ITEM

* INDICATES NON-STANDARD ITEM COVERED BY SPECIAL PROVISION

F.A.U. RTE.	SECTION	COUNTY	TOTAL SHEETS	SHEET NO.
*	09-00094-00-RS	COOK	17	2
STA.		TO STA.		
FED. ROAD DIST. NO. C-91-742-09		ILLINOIS	FED AID PROJECT ARA-9003-(375)	

*FAU 1020 LARAMIE AVENUE
CONTRACT NO. 63322

COPYRIGHT © 2009, BY BAXTER & WOODMAN, INC. #PLOTDATE# #DATE# #TIME#
 STATE OF ILLINOIS PROFESSIONAL DESIGN FIRM #PLOTDATE# #DATE# #TIME#
 #PLOTDATE# #DATE# #TIME#



USER NAME = #USER#	DESIGNED - CAC	REVISED - PER 1007 10-6-09
FILE NAME = #FILES#	DRAWN - BCD	REVISED -
PLOT DATE = #DATE#	CHECKED - TMS	REVISED -
	DATE - 8-19-09	REVISED -

CITY OF OAK FOREST, ILLINOIS
FAU 1020 LARAMIE AVENUE
STP (LAPP) IMPROVEMENTS

GENERAL NOTES, INDEX OF SHEETS
HIGHWAY STANDARDS, SUMMARY OF QUANTITIES

SCALE: NONE

STA. TO STA.

F.A.U. RTE.	SECTION	COUNTY	TOTAL SHEETS	SHEET NO.
*	09-00094-00-RS	COOK	17	2
FED. ROAD DIST. NO.		ILLINOIS	CONTRACT NO. 63322	
			FED. AID PROJECT	

GRATES SPECIAL, (TYPE EJIW 7180 WITH M1 GRATE)		
STATION	O/S	NO.
16+52	21' RT	1
16+65	16' LT	1
11+86	21' RT	1
21+32	16' LT	1
21+32	16' RT	1
26+49	16' LT	1
26+49	16' RT	1
29+82	22' LT	1
29+82	22' RT	1
30+15	22' LT	1
30+15	22' RT	1
32+72	16' LT	1
32+72	16' RT	1
TOTAL=		13 EACH

COMBINATION CONCRETE CURB AND GUTTER REMOVAL AND REPLACEMENT			
LARAMIE STREET			
STATION	STATION	LOCATION	LENGTH FT
10+74	10+84	LT	10
11+40	12+15	RT	75
11+82	12+20	RT	38
11+96	12+40	LT	44
13+40	13+65	RT	25
13+40	13+77	LT	37
13+55	14+00	RT	45
13+60	14+24	RT	59
14+90	15+16	RT	26
15+72	16+04	LT	32
16+12	16+27	RT	15
16+43	16+73	INT	30
16+66	16+76	INT	10
16+81	17+06	INT	25
16+84	16+88	LT	4
17+05	17+48	LT	43
17+64	17+91	LT	27
17+55	17+91	RT	36
18+04	18+33	LT	29
18+29	18+48	RT	19
18+49	18+81	LT	32
18+60	19+14	RT	54
19+67	20+22	LT	55
20+72	20+78	LT	6
21+16	21+52	LT	36
21+68	21+85	RT	17
21+89	22+21	LT	32
22+14	22+22	RT	8
22+50	22+80	LT	30
23+05	23+30	RT	25
23+51	23+66	LT	15
23+51	23+61	RT	10
24+10	24+61	LT	51
24+31	24+62	RT	31
24+92	25+12	LT	20
24+92	25+12	RT	20
25+24	25+69	RT	45
25+37	25+45	LT	8
25+75	26+15	LT	40
25+80	26+15	RT	35
26+42	26+81	RT	39
26+45	26+67	LT	22
26+81	26+93	LT	12
26+98	27+18	RT	20
27+34	27+97	LT	63
29+71	29+79	LT	8
29+71	29+96	RT	25
30+11	30+21	LT	10
27+84	28+10	RT	26
28+11	28+67	LT	56
28+95	29+53	LT	58
30+38	30+87	RT	49
31+04	31+36	RT	32
31+68	32+10	RT	42
32+28	32+46	LT	18
32+60	32+81	RT	21
33+18	33+59	RT	41
34+76	34+96	RT	20
35+12	35+35	LT	20
35+67	35+93	RT	26
TOTAL=		1,752 LF	

SIDEWALK REPAIRS								
STATION	STATION		LENGTH	WIDTH	SIDEWALK REMOVAL	SIDEWALK 5-INCH	DETECTABLE WARNING	
15+82	16+87	LT	105	5	525	525		
23+10	23+17	LT	7	5	35	35	8	
23+53	23+64	LT	VAR	VAR	54	120	16	
23+57	23+62	RT	VAR	VAR	102	84	8	
29+50	29+60	LT	10	5	50	50		
29+69	29+74	LT	5	5	50			
29+69	29+84	LT	15	5	75	75	8	
30+13	30+21	LT	8	5	40	40	8	
32+74	32+84	RT	10	5	50	50		
33+03	33+18	RT	15	5	75	75		
33+60	33+75	RT	15	5	75	75		
33+88	34+03	RT	15	5	75	75		
34+20	34+35	RT	15	5	75	75		
35+05	35+20	LT	15	5	75	75		
35+43	35+63	RT	20	5	100	100		
35+81	36+01	RT	20	5	100	100		
36+25	36+35	RT	10	5	50	50		
TOTALS					1606 SF	1604 SF	48 SF	

F.A.U. RTE.	SECTION	COUNTY	TOTAL SHEETS	SHEET NO.
09-00094-00-RS		COOK	17	3

PORTLAND CEMENT CONCRETE DRIVEWAY REMOVAL AND REPLACEMENT					
	LENGTH FT	WIDTH FT	AREA SQ FT	AREA SQ YD	
11+78	RT	50	12	600	66.7
12+69	LT	20	5	100	11.1
13+61	LT	20	13	260	28.9
18+66	LT	14	5	70	7.8
24+45	RT	26	5	130	14.4
31+94	RT	18	5	90	10.0
32+70	RT	15	5	75	8.3
33+26	RT	24	10	240	26.7
35+20	LT	18	5	90	10.0
TOTALS			184.0 SF		

HOT-MIX ASPHALT SURFACE REMOVAL AND REPLACEMENT, 3"						
STATION	STATION		LENGTH FT	WIDTH FT	AREA SQ FT	AREA SQ YD
25+81	26+30	LT	49	10	490	54.4
26+52	26+62	LT	10	10	100	11.1
30+14	30+52	LT	38	10	380	42.2
32+41	32+64	FW	23	11	253	28.1
TOTALS					136.0 SY	

HOT-MIX ASPHALT SURFACE REMOVAL, VARIABLE DEPTH					
STATION	TO	STATION	DESCRIPTION	LENGTH (FT)	AREA (SQ YD)
LARAMIE AVE					
16+03		36+42	LT	2039	1585.9
16+03		36+42	RT	2039	1585.9
TOTALS					3,172 SY

HMA DRIVEWAY SURFACE REMOVAL AND REPLACEMENT					
STATION	LENGTH FT	WIDTH FT	AREA SQ FT	AREA SQ YD	
12+09	LT	40	4	160	17.8
13+07	RT	40	4	160	17.8
13+77	RT	20	4	80	8.9
14+07	RT	14	4	56	6.2
15+01	RT	25	4	100	11.1
15+74	LT	26	4	104	11.6
16+75	LT	VAR	VAR	410	45.6
17+71	RT	30	4	120	13.3
18+93	RT	22	4	88	9.8
20+10	LT	20	9	180	20.0
20+53	RT	16	4	64	7.1
21+39	LT	16	8	128	14.2
21+74	RT	16	4	64	7.1
21+94	LT	20	8	160	17.8
25+50	RT	22	4	88	9.8
26+51	LT	16	4	64	7.1
26+58	RT	20	4	80	8.9
27+07	RT	20	4	80	8.9
27+47	LT	20	4	80	8.9
27+70	LT	16	4	64	7.1
27+92	RT	24	4	96	10.7
28+51	LT	20	4	80	8.9
29+00	LT	16	4	64	7.1
30+22	RT	20	4	80	8.9
35+72	RT	22	4	88	9.8
TOTAL= 305.0 SY					

CLASS B PATCHES										
STATION	STATION		LENGTH FT	WIDTH FT	AREA SQ FT	AREA SQ YD	TYPE I	TYPE II	TYPE III	TYPE IV
10+86	10+94	LT	8	24	192	21.3			21.3	
10+97	11+03	RT	6	24	144	16.0			16.0	
11+08	11+14	RT	6	12	72	8.0				
11+16	11+22	LT	6	24	144	16.0	8.0		16.0	
11+16	11+30	RT	14	24	336	37.3				37.3
11+47	11+53	RT	6	12	72	8.0		8.0		
11+52	11+72	RT	20	24	480	53.3				53.3
11+84	11+90	LT	6	24	144	16.0			16.0	
11+84	11+90	RT	6	24	144	16.0			16.0	
12+00	12+06	LT	6	24	144	16.0			16.0	
12+15	12+21	LT	6	12	72	8.0		8.0		
12+21	12+27	LT	6	12	72	8.0		8.0		
12+27	12+33	LT	6	12	72	8.0		8.0		
TOTALS=					232.0 SY	0 SY	40 SY	101 SY	91 SY	

CLASS D PATCHES, 6"										
STATION	STATION		LENGTH FT	WIDTH FT	AREA SQ FT	AREA SQ YD	TYPE I	TYPE II	TYPE III	TYPE IV
31+00	32+50	LT	150	7	1050	117				117
TOTALS=					117.0 SY	0.0 SY	0.0 SY	0.0 SY	117 SY	

SANITARY MANHOLES TO BE ADJUSTED		
STATION	O/S	NO.
12+95	2' RT	1
13+68	27' LT	1
14+75	2' RT	1
16+70	0' LT	1
23+35	0' LT	1
25+00	0' LT	1
27+54	0' LT	1
30+00	63' LT	1
30+07	5' RT	1
34+02	0' LT	1
TOTAL=		10 EACH

VALVE BOXES TO BE ADJUSTED		
STATION	O/S	NO.
23+23	43' LT	1
23+30	30' LT	1
23+45	19' LT	1
29+76	13' RT	1
TOTAL=		4 EACH

MANHOLES TO BE ADJUSTED		
STATION	O/S	NO.
23+22	17' LT	1
26+71	10' LT	1
29+95	0' LT	1
30+06	43' LT	1
30+17	14' RT	1
30+42	0' LT	1
TOTAL=		6 EACH

PORTLAND CEMENT CONCRETE SURFACE REMOVAL, VARIABLE DEPTH						
STATION	TO	STATION	DESCRIPTION	LENGTH FT	WIDTH FT	AREA SQ YD
10+82		16+03	LT	521	7	405.2
10+82		16+03	RT	521	7	405.2
SUB TOTAL =					811 SY	

INLETS TO BE ADJUSTED		
STATION	O/S	NO.
12+09	26' LT	1
12+09	26' RT	1
13+52	24' LT	1
13+52	24' RT	1
16+52	21' RT	1
16+65	16' LT	1
16+86	21' RT	1
21+32	16' LT	1
21+32	16' RT	1
26+49	16' LT	1
26+49	16' RT	1
29+82	22' LT	1
29+82	22' RT	1
30+15	22' LT	1
30+15	22' RT	1
32+72	16' LT	1
32+72	16' RT	1
TOTAL=		17 EACH

CITY OF OAK FOREST, ILLINOIS
FAU 1020 LARAMIE AVENUE
STP (LAPP) IMPROVEMENTS

SCHEDULE OF QUANTITIES

SCALE: NONE STA. TO STA.

F.A.U. RTE.	SECTION	COUNTY	TOTAL SHEETS	SHEET NO.
09-00094-00-RS		COOK	17	3

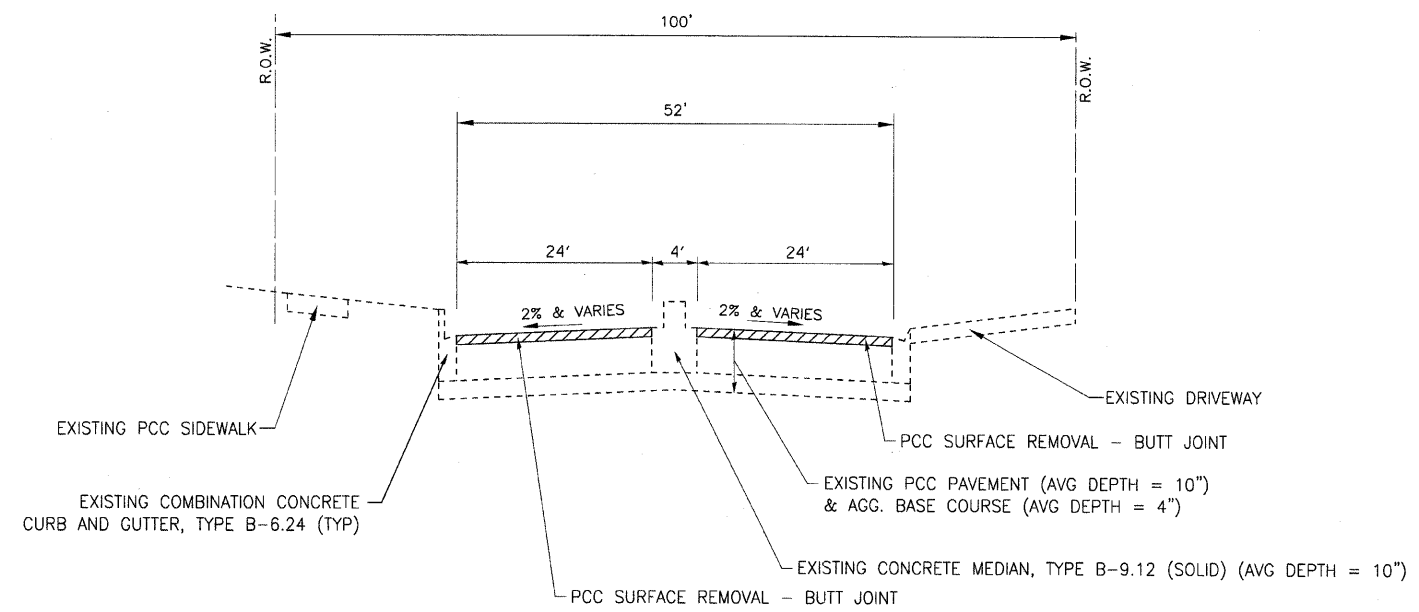
COPYRIGHT © 2009 BY BAXTER & WOODMAN, INC.
 STATE OF ILLINOIS - PROFESSIONAL DESIGN FIRM
 BAXTER & WOODMAN, INC. REGISTERED PROFESSIONAL ENGINEERS
 BAXTER & WOODMAN, INC. REGISTERED PROFESSIONAL SURVEYORS
 BAXTER & WOODMAN, INC. REGISTERED PROFESSIONAL LANDSCAPE ARCHITECTS



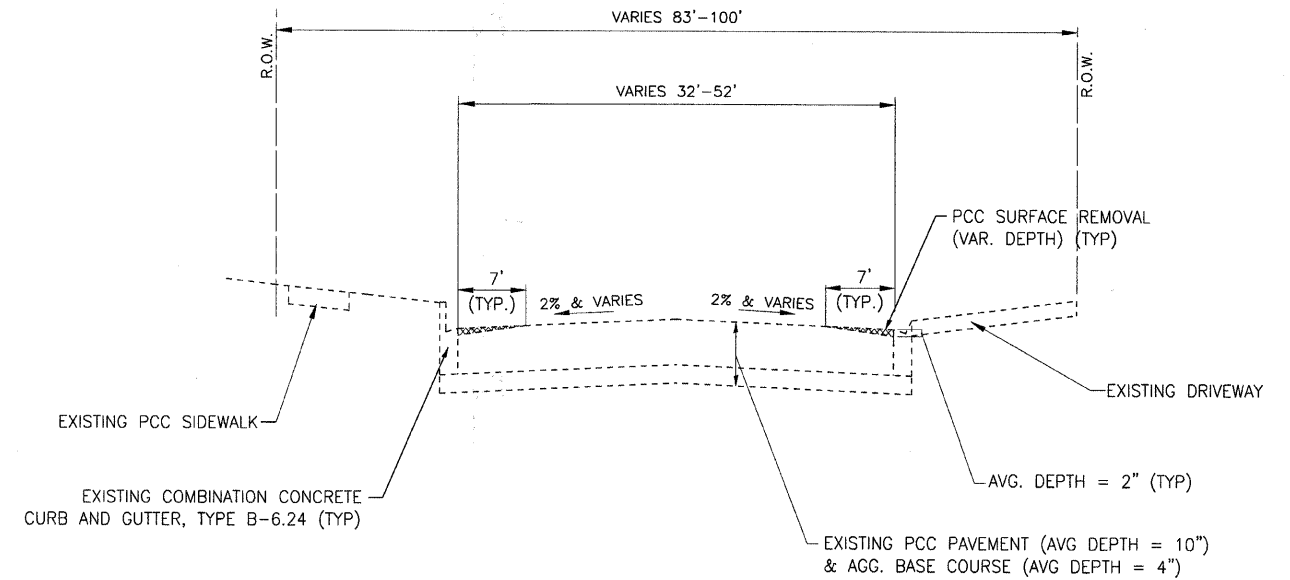
USER NAME = #USER#	DESIGNED - CAC	REVISED - PER IDOT 10-6-09
FILE NAME = #FILES#	DRAWN - BCD	REVISED -
PLOT DATE = #DATE#	CHECKED - TMS	REVISED -
	DATE - 8-19-09	REVISED -

F.A.U. RTE.	SECTION	COUNTY	TOTAL SHEETS	SHEET NO.
09-00094-00-RS		COOK	17	4
STA. TO STA.				
FED. ROAD DIST. NO.	ILLINOIS	FED AID PROJECT		
C-91-742-09		ARA-9003-(375)		

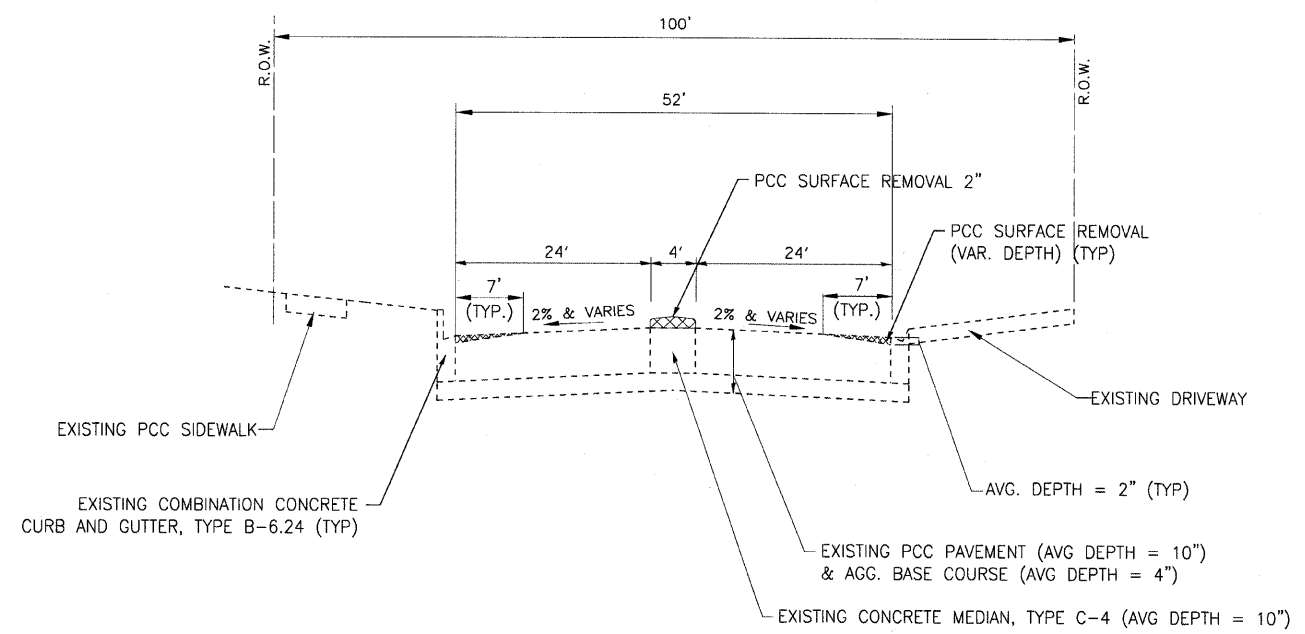
*FAU 1020 LARAMIE AVENUE
CONTRACT NO. 63322



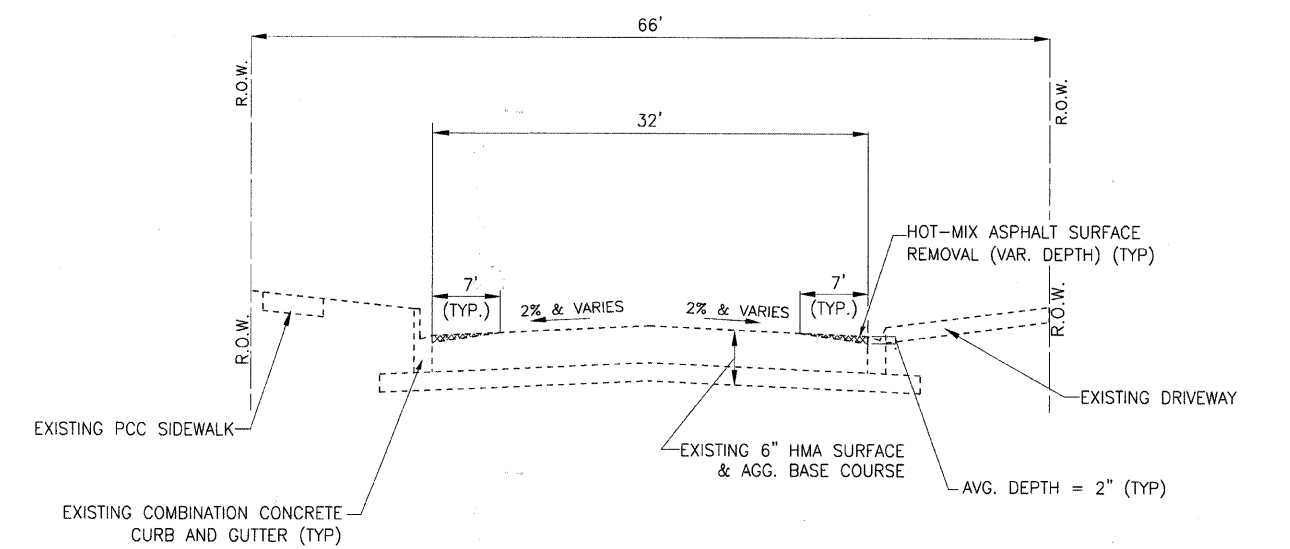
EXISTING TYPICAL SECTION
LARAMIE AVENUE
STA. 10+50 TO STA. 11+10



EXISTING TYPICAL SECTION
LARAMIE AVENUE
STA. 12+48 TO STA. 16+02



EXISTING TYPICAL SECTION
LARAMIE AVENUE
STA. 11+10 TO STA. 12+48



EXISTING TYPICAL SECTION
LARAMIE AVENUE
STA. 16+02 TO STA. 36+56

COPYRIGHT © 2009 BY BAXTER & WOODMAN, INC.
 STATE OF ILLINOIS - PROFESSIONAL DESIGN FIRM
 LICENSE NO. 184-00191 - EXPIRES 4/30/2011
 10/7/2009 10:28:11 PM



USER NAME = #USER#	DESIGNED - CAC	REVISED - PER IDOT 10-6-09
FILE NAME = 090312-ExTypSec.sht	DRAWN - BCD	REVISED -
PLOT DATE = 10/7/2009	CHECKED - TMS	REVISED -
	DATE - 8-19-09	REVISED -

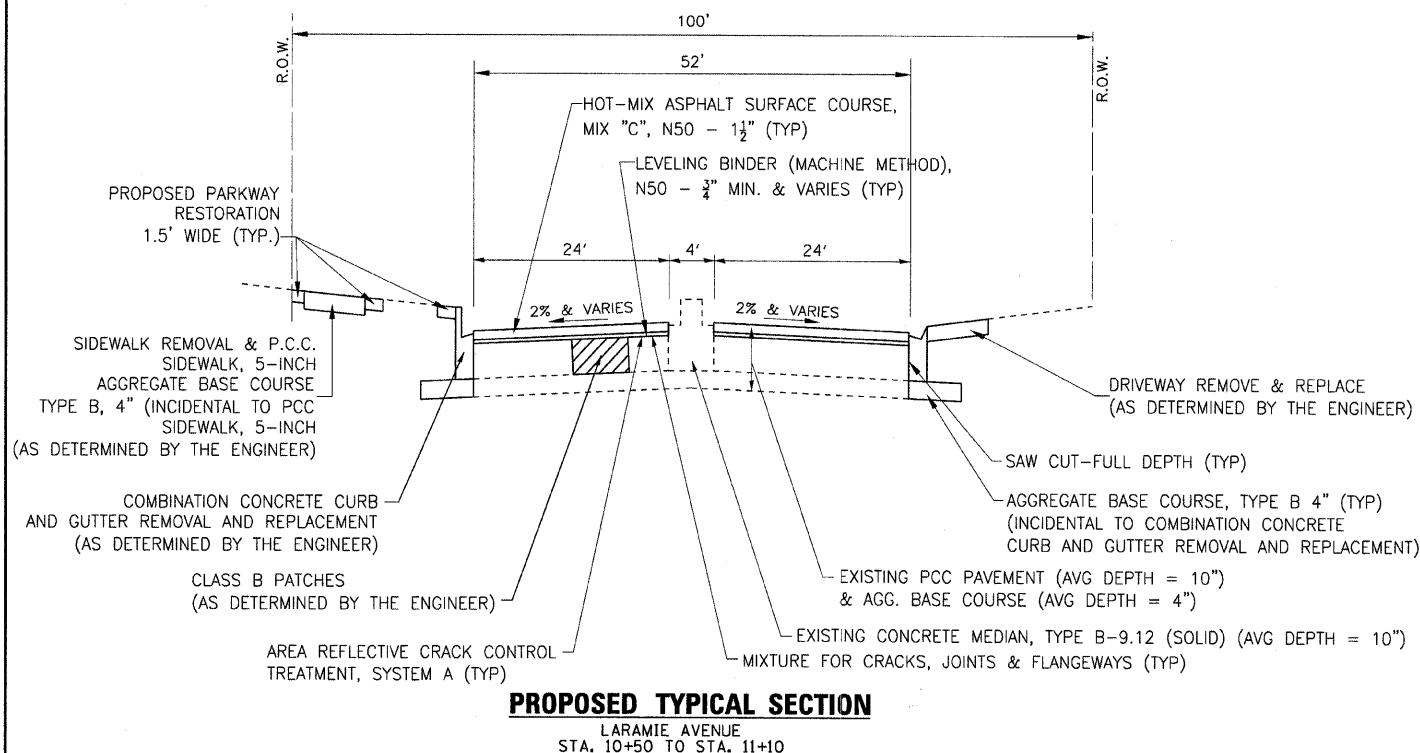
**CITY OF OAK FOREST, ILLINOIS
FAU 1020 LARAMIE AVENUE
STP (LAPP) IMPROVEMENTS**

EXISTING TYPICAL SECTIONS	
SCALE: NONE	STA. TO STA.

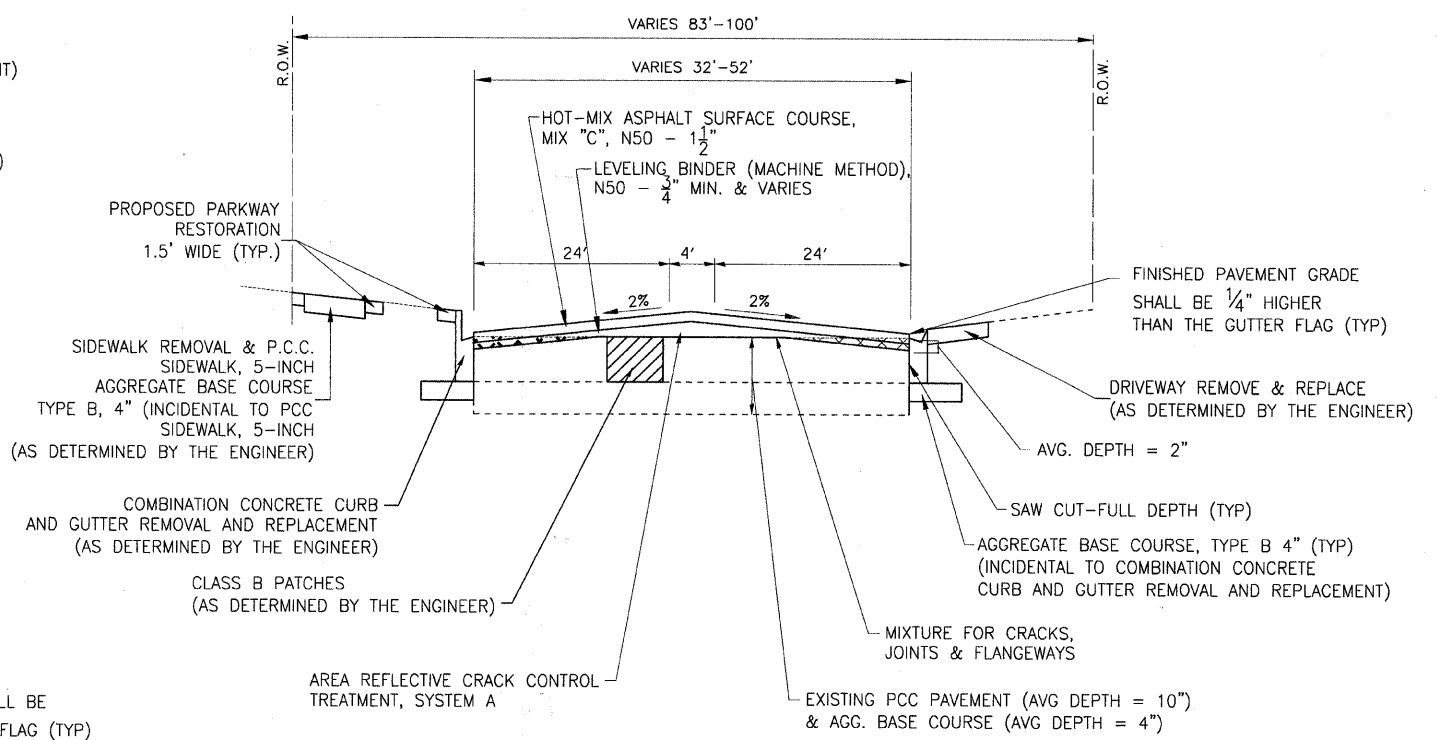
F.A.U. RTE.	SECTION	COUNTY	TOTAL SHEETS	SHEET NO.
09-00094-00-RS		COOK	17	4
STA. TO STA.				
FED. ROAD DIST. NO.	ILLINOIS	CONTRACT NO. 63322		
		FED. AID PROJECT		

F.A.U. RTE.	SECTION	COUNTY	TOTAL SHEETS	SHEET NO.
09-00094-00-RS		COOK	17	5
STA.	TO STA.			
FED. ROAD DIST. NO.	ILLINOIS	FED AID PROJECT		
C-91-742-09		ARA-9003-(375)		

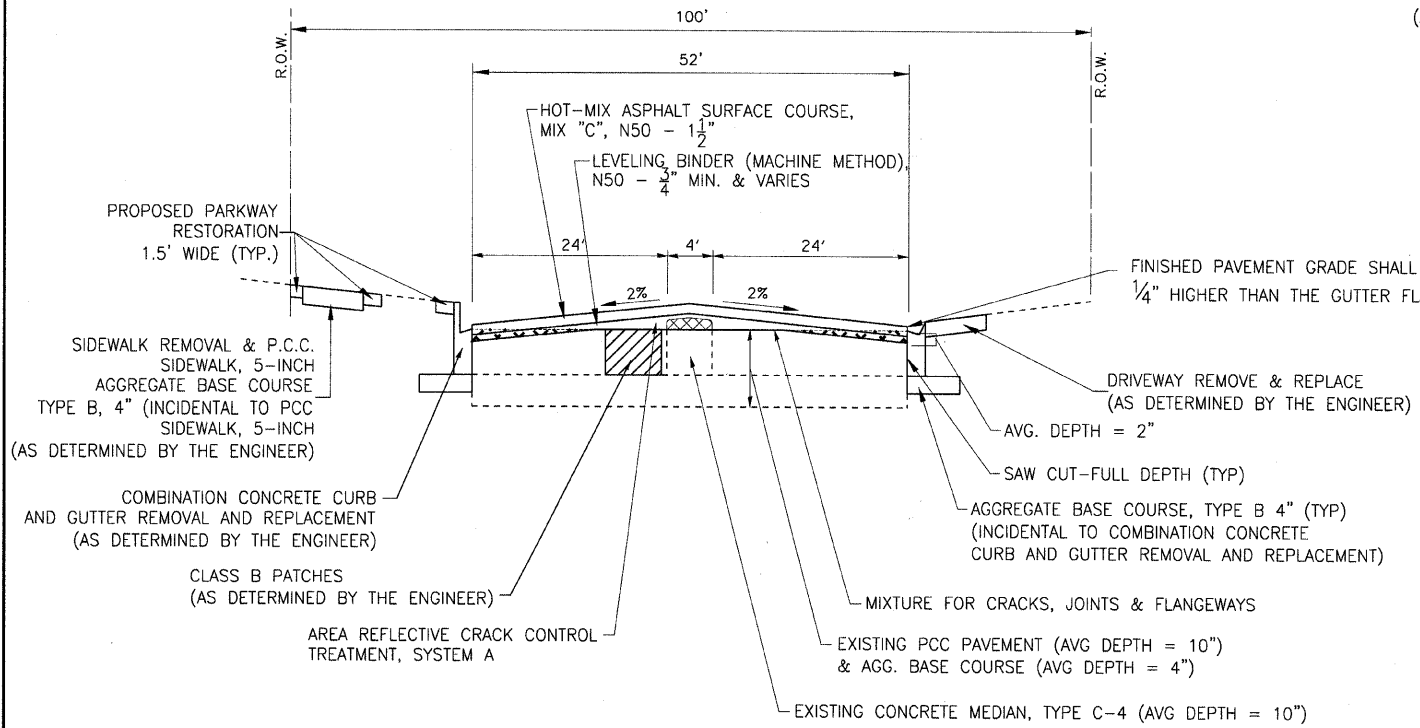
•FAU 1020 LARAMIE AVENUE
CONTRACT NO. 63322



PROPOSED TYPICAL SECTION
LARAMIE AVENUE
STA. 10+50 TO STA. 11+10



PROPOSED TYPICAL SECTION
LARAMIE AVENUE
STA. 12+48 TO STA. 16+02



PROPOSED TYPICAL SECTION
LARAMIE AVENUE
STA. 11+10 TO STA. 12+48

COPYRIGHT © 2009 BY BAXTER & WOODMAN, INC. PLOT DATE = 10/7/2009
 STATE OF ILLINOIS - PROFESSIONAL DESIGN FIRM LICENSE NO. 098-00021 - EXPIRES 4/30/2011
 4000 S. BAKER ROAD, OAK FOST, ILLINOIS 60451-1000



USER NAME = USER8	DESIGNED - CAC	REVISED - PER IDOT 10-6-09
FILE NAME = 090312-TYPSEC.dwt	DRAWN - BCD	REVISED -
PLOT DATE = 10/7/2009	CHECKED - TMS	REVISED -
	DATE = 8-19-09	REVISED -

CITY OF OAK FOREST, ILLINOIS
FAU 1020 LARAMIE AVENUE
STP (LAPP) IMPROVEMENTS

PROPOSED TYPICAL SECTIONS	
SCALE: NONE	STA. TO STA.

F.A.U. RTE.	SECTION	COUNTY	TOTAL SHEETS	SHEET NO.
09-00094-00-RS		COOK	17	5
FED. ROAD DIST. NO.	ILLINOIS	CONTRACT NO. 63322		
		FED. AID PROJECT		

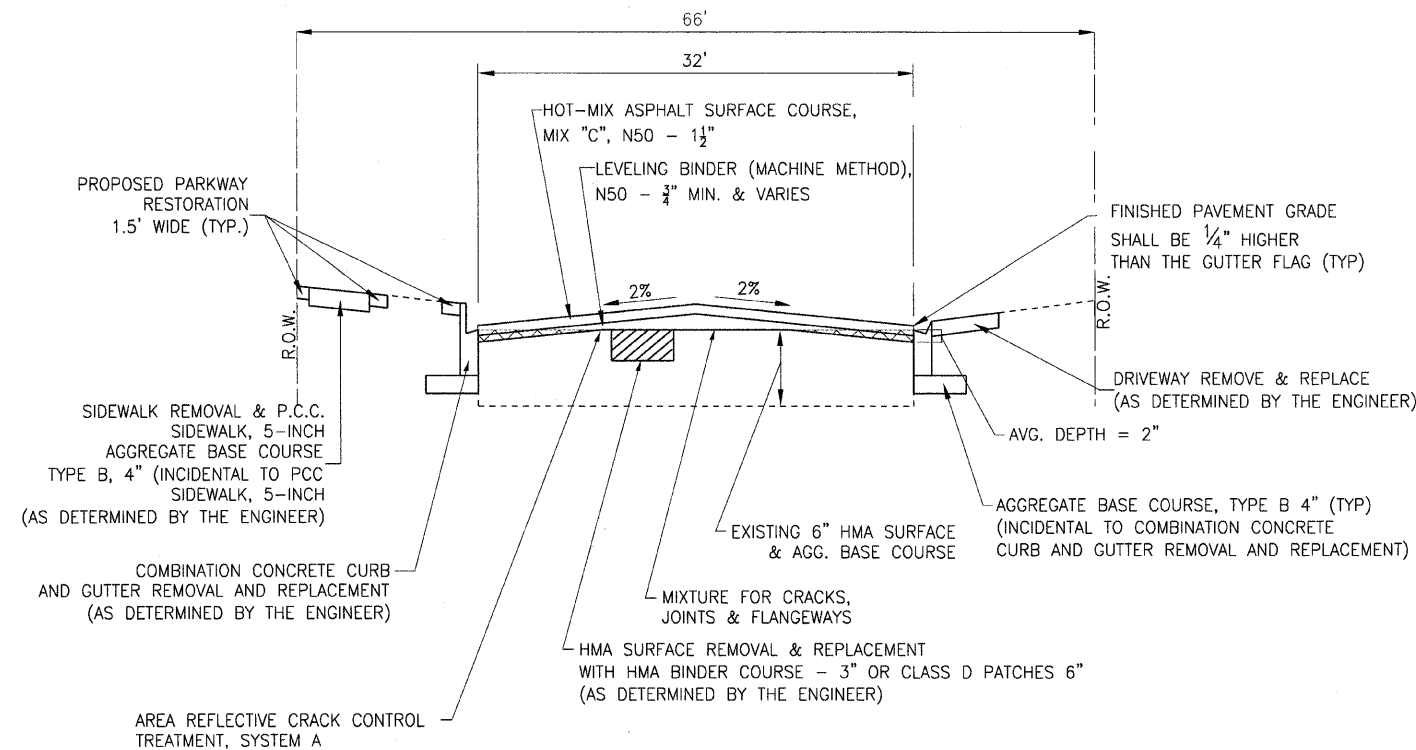
F.A.U. RTE.	SECTION	COUNTY	TOTAL SHEETS	SHEET NO.
09-00094-00-RS	09-00094-00-RS	COOK	17	6
STA.		TO STA.		
FED. ROAD DIST. NO.	ILLINOIS	FED AID PROJECT		
C-91-742-09		ARA-9003-(375)		

FAU 1020 LARAMIE AVENUE
CONTRACT NO. 63322

HOT-MIX ASPHALT MIXTURE REQUIREMENTS

NOTE: CONTRACTOR SHALL MILL BEFORE PATCHING

ITEM	AIR VOIDS @ Ndes
PATCHING	
CLASS D PATCHES, 6" (HMA BINDER IL-19 mm)	4% @ 70 Gyr
HMA SURFACE REMOVAL AND REPLACEMENT 3" (HMA BINDER IL-19.0 mm)	4% @ 70 Gyr
ROADWAY RESURFACING	
HOT-MIX ASPHALT SURFACE COURSE, MIX "C", N50 (IL 9.5 mm)	4% @ 50 Gyr
LEVELING BINDER (MACHINE METHOD), N50 (IL 9.5 mm)	4% @ 50 Gyr
DRIVEWAYS	
HMA SURFACE COURSE, MIX "C", N50 (IL 9.5 mm)	4% @ 50 Gyr
1. THE UNIT WEIGHT USED TO CALCULATE ALL HOT-MIX ASPHALT SURFACE MIXTURE IS 112 LBS/SQ YD/IN. 2. THE "AC TYPE" FOR POLYMERIZED HMA MIXES SHALL BE "SBS/SBR PG 70-22" AND FOR NON-POLYMERIZED HMA THE "AC TYPE" SHALL BE "PG 64-22" UNLESS MODIFIED BY DISTRICT ONE SPECIAL PROVISIONS." FOR "PERCENT OF RAP" SEE DISTRICT ONE SPECIAL PROVISIONS.	



PROPOSED TYPICAL SECTION

LARAMIE AVENUE
STA. 16+02 TO STA. 36+56

COPYRIGHT © 2009 BY BAXTER & WOODMAN, INC.
 STATE OF ILLINOIS - PROFESSIONAL DESIGN FIRM
 EXPRESSES THE DESIGNER'S OPINION
 #PLOTTERBY# #DATE# #TIME#



USER NAME = #USER#	DESIGNED - CAC	REVISED - PER IDOT 10-6-09
FILE NAME = #FILES#	DRAWN - BCD	REVISED -
PLOT DATE = #DATE#	CHECKED - TMS	REVISED -
	DATE - 8-19-09	REVISED -

CITY OF OAK FOREST, ILLINOIS
FAU 1020 LARAMIE AVENUE
STP (LAPP) IMPROVEMENTS

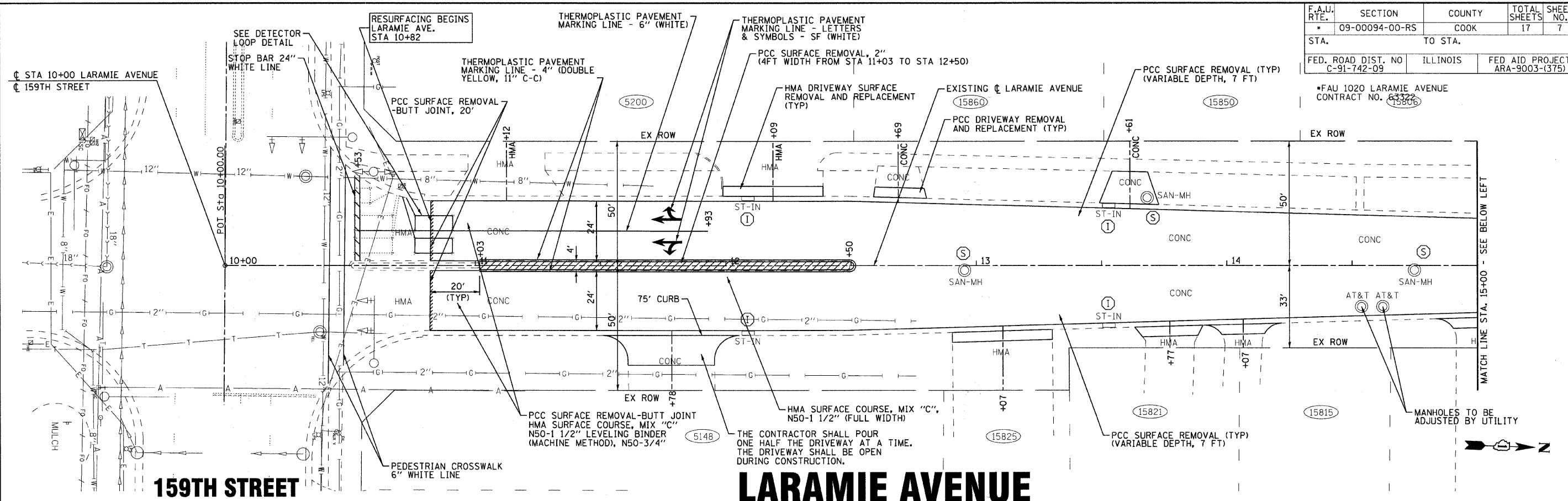
PROPOSED TYPICAL SECTIONS

SCALE: NONE STA. TO STA.

F.A.U. RTE.	SECTION	COUNTY	TOTAL SHEETS	SHEET NO.
09-00094-00-RS	09-00094-00-RS	COOK	17	6
FED. ROAD DIST. NO.		CONTRACT NO. 63322		
		ILLINOIS FED. AID PROJECT		

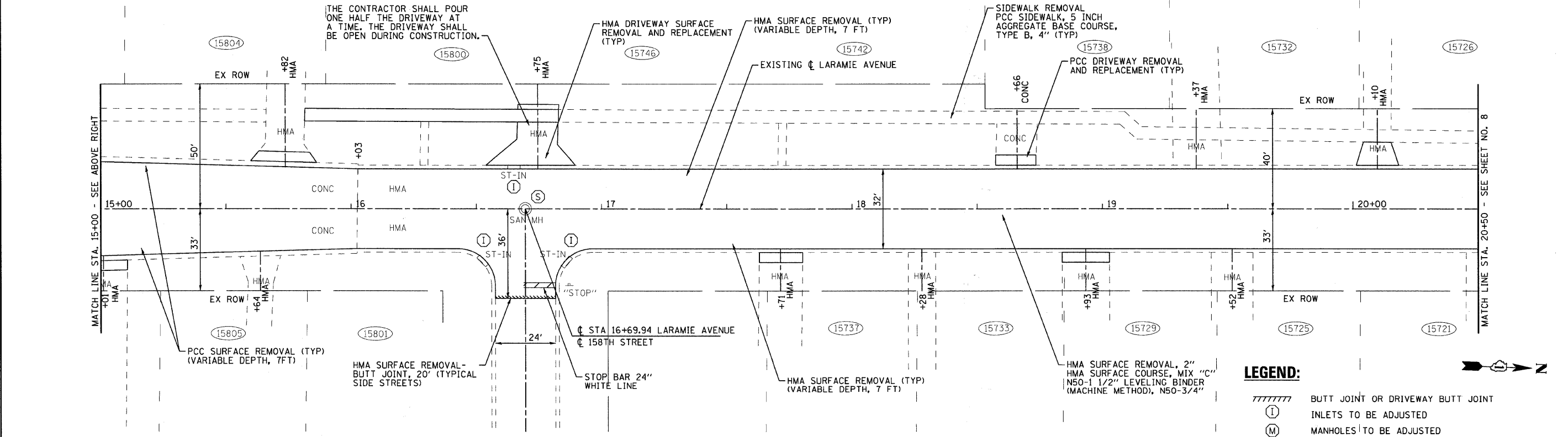
F.A.U. RTE.	SECTION	COUNTY	TOTAL SHEETS	SHEET NO.
09-00094-00-RS		COOK	17	7
STA.	TO STA.			
FED. ROAD DIST. NO	ILLINOIS	FED AID PROJECT ARA-9003-(375)		
C-91-742-09				

FAU 1020 LARAMIE AVENUE
CONTRACT NO. 63322



159TH STREET

LARAMIE AVENUE



158TH STREET

LARAMIE AVENUE

LEGEND:

	BUTT JOINT OR DRIVEWAY BUTT JOINT
(I)	INLETS TO BE ADJUSTED
(M)	MANHOLES TO BE ADJUSTED
(V)	VALVE BOXES TO BE ADJUSTED
(A)	DRAINAGE AND UTILITY STRUCTURES TO BE ADJUSTED
(S)	SANITARY MANHOLES TO BE ADJUSTED

COPYRIGHT © 2009 BY BAXTER & WOODMAN, INC.
 STATE OF ILLINOIS - PROFESSIONAL DESIGN FIRM
 #PLOTTER# #SCALE# #DATE# #TIME#
 #PLOT# #DATE# #TIME#



USER NAME = #USER#	DESIGNED - CAC	REVISED - PER IDOT 10-6-09
FILE NAME = #FILES#	DRAWN - BCD	REVISED -
PLOT DATE = #DATE#	CHECKED - TMS	REVISED -
	DATE - 8-19-09	REVISED -

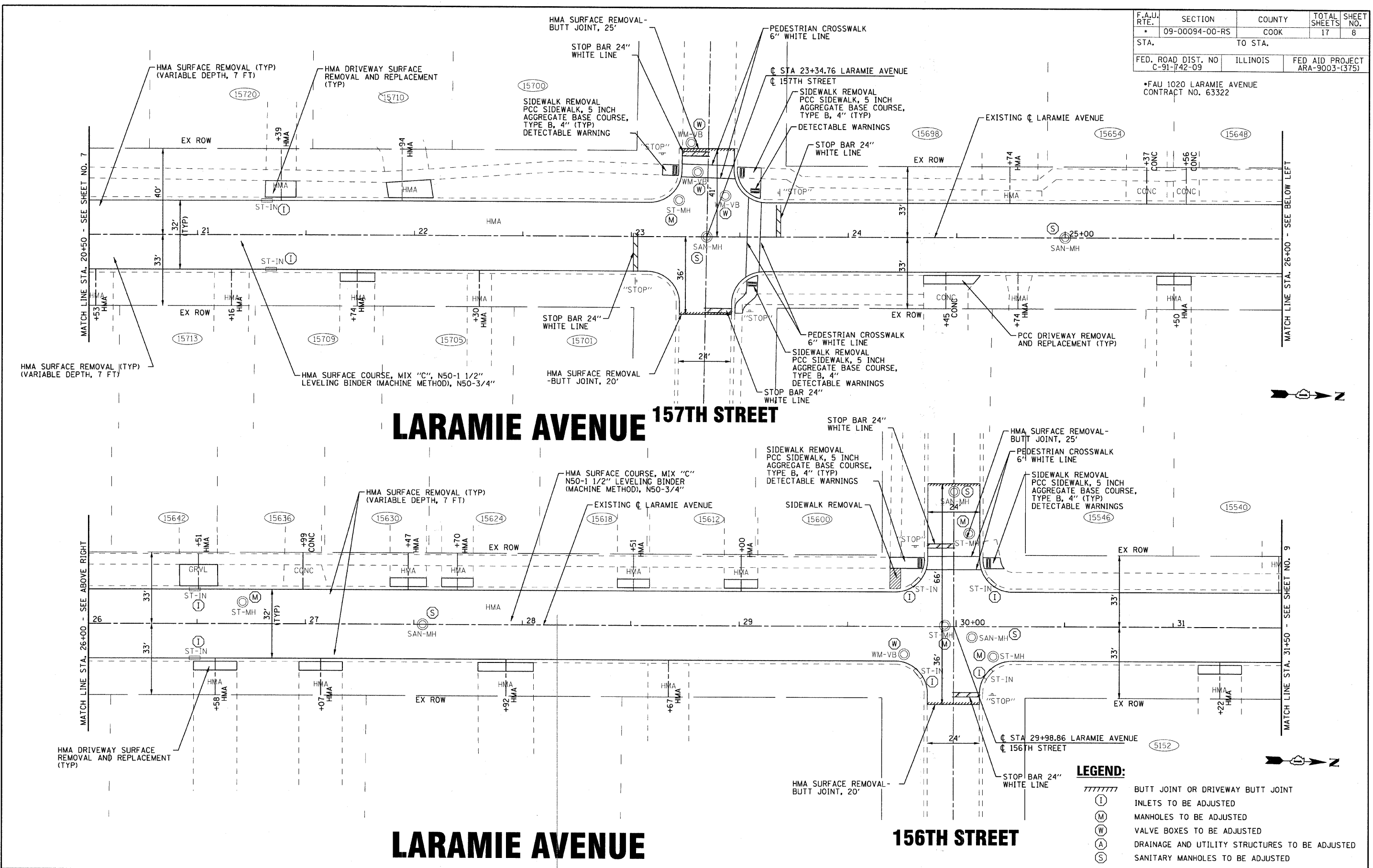
CITY OF OAK FOREST, ILLINOIS
FAU 1020 LARAMIE AVENUE
STP (LAPP) IMPROVEMENTS

LARAMIE AVENUE PLAN
 SCALE: 1"=20'
 STA. 10+00 TO STA. 20+50

F.A.U. RTE.	SECTION	COUNTY	TOTAL SHEETS	SHEET NO.
09-00094-00-RS		COOK	17	7
FED. ROAD DIST. NO.	ILLINOIS	CONTRACT NO. 63322		
		FED. AID PROJECT		

F.A.U. RTE.	SECTION	COUNTY	TOTAL SHEETS	SHEET NO.
* 09-00094-00-RS		COOK	17	8
STA.	TO STA.			
FED. ROAD DIST. NO. C-91-742-09	ILLINOIS	FED AID PROJECT ARA-9003-(375)		

*FAU 1020 LARAMIE AVENUE
CONTRACT NO. 63322



LARAMIE AVENUE 157TH STREET

LARAMIE AVENUE

156TH STREET

LEGEND:

	BUTT JOINT OR DRIVEWAY BUTT JOINT
	INLETS TO BE ADJUSTED
	MANHOLES TO BE ADJUSTED
	VALVE BOXES TO BE ADJUSTED
	DRAINAGE AND UTILITY STRUCTURES TO BE ADJUSTED
	SANITARY MANHOLES TO BE ADJUSTED

COPYRIGHT © 2009 BY BAXTER & WOODMAN, INC.
 STATE OF ILLINOIS - PROFESSIONAL DESIGN FIRM
 LICENSE NO. 184-00021 - EXPIRES 4/30/2011
 1500 WOODMAN DRIVE, OAK FOREST, ILLINOIS 60451
 TEL: 815-481-1200 FAX: 815-481-1201



USER NAME - USER*	DESIGNED - CAC	REVISED - PER IDOT 10-6-09
FILE NAME - 090312-P1an02.dwg	DRAWN - BCD	REVISED -
PLDT DATE - 10/7/2009	CHECKED - TMS	REVISED -
	DATE - 8-19-09	REVISED -

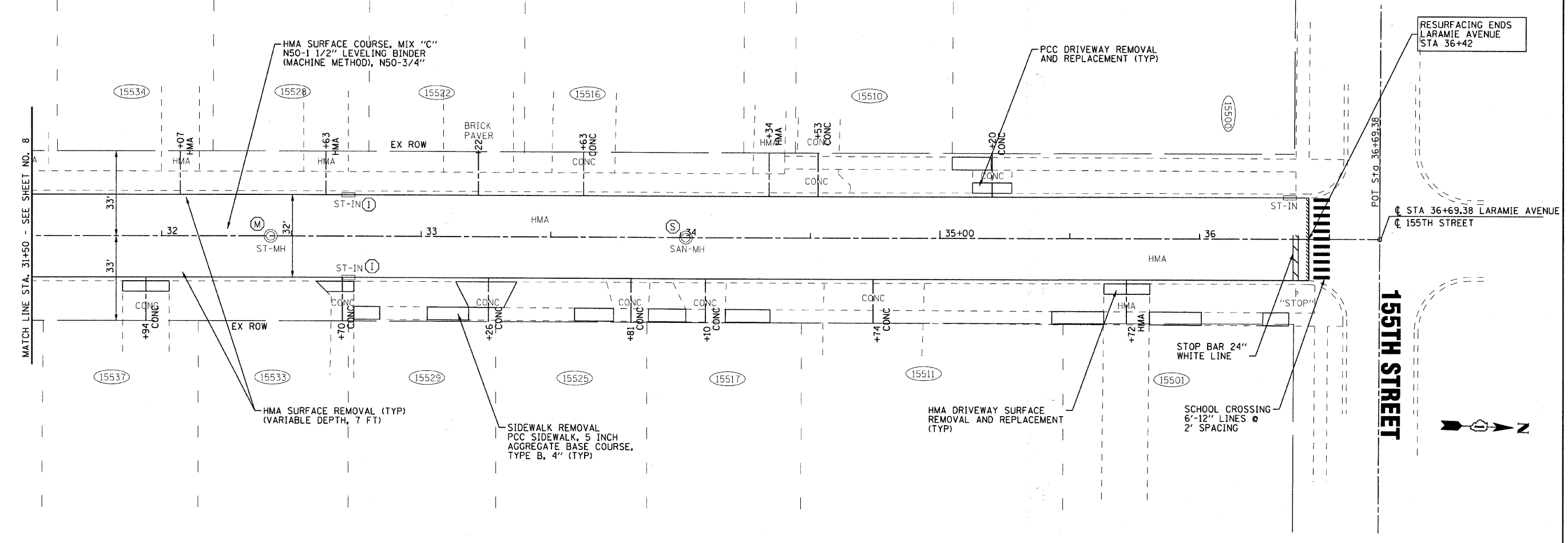
CITY OF OAK FOREST, ILLINOIS
FAU 1020 LARAMIE AVENUE
STP (LAPP) IMPROVEMENTS

LARAMIE AVENUE PLAN
 SCALE: 1"=20'
 STA. 20+50 TO STA. 31+50

F.A. RTE.	SECTION	COUNTY	TOTAL SHEETS	SHEET NO.
* 09-00094-00-RS		COOK	17	8
FED. ROAD DIST. NO.	ILLINOIS	CONTRACT NO. 63322		
		FED. AID PROJECT		

F.A.U. RTE.	SECTION	COUNTY	TOTAL SHEETS	SHEET NO.
09-00094-00-RS		COOK	17	9
STA.		TO STA.		
FED. ROAD DIST. NO.	ILLINOIS	FED AID PROJECT		
C-91-742-09		ARA-9003-(375)		

FAU 1020 LARAMIE AVENUE
CONTRACT NO. 63322



LARAMIE AVENUE

LEGEND:

- ||||| BUTT JOINT OR DRIVEWAY BUTT JOINT
- (I) INLETS TO BE ADJUSTED
- (M) MANHOLES TO BE ADJUSTED
- (W) VALVE BOXES TO BE ADJUSTED
- (A) DRAINAGE AND UTILITY STRUCTURES TO BE ADJUSTED
- (S) SANITARY MANHOLES TO BE ADJUSTED

COPYRIGHT © 2009 BY BAXTER & WOODMAN, INC. #PENTR1A/AB
 STATE OF ILLINOIS - PROFESSIONAL DESIGN FIRM #PENTR1A/AB
 LICENSE NO. - 184-00121 - EXPIRES 4/30/2011
 10/7/2009 2:28:22 PM
 \\c:\pdr\pdr\wood.com\proj\1020\laramie\1020\laramie.dwg
 \c:\pdr\pdr\wood.com\proj\1020\laramie\1020\laramie.dwg



USER NAME - USER*	DESIGNED - CAC	REVISED - PER IDOT 10-6-09
FILE NAME - 1020312-P1an03.sht	DRAWN - BCD	REVISED -
PLOT DATE - 10/7/2009	CHECKED - TMS	REVISED -
	DATE - 8-19-09	REVISED -

CITY OF OAK FOREST, ILLINOIS
FAU 1020 LARAMIE AVENUE
STP (LAPP) IMPROVEMENTS

LARAMIE AVENUE PLAN

SCALE: 1"=20' STA. 31+50 TO STA.

F.A.U. RTE.	SECTION	COUNTY	TOTAL SHEETS	SHEET NO.
09-00094-00-RS		COOK	17	9
FED. ROAD DIST. NO.		CONTRACT NO. 63322		
ILLINOIS		FED. AID PROJECT		

F.A.U. RTE.	SECTION	COUNTY	TOTAL SHEETS	SHEET NO.
09-00094-00-RS		COOK	17	10
STA.		TO STA.		
FED. ROAD DIST. NO.	ILLINOIS	FED AID PROJECT		
C-91-742-09		ARA-9003-(375)		

*FAU 1020 LARAMIE AVENUE
CONTRACT NO. 63322



NOTE:

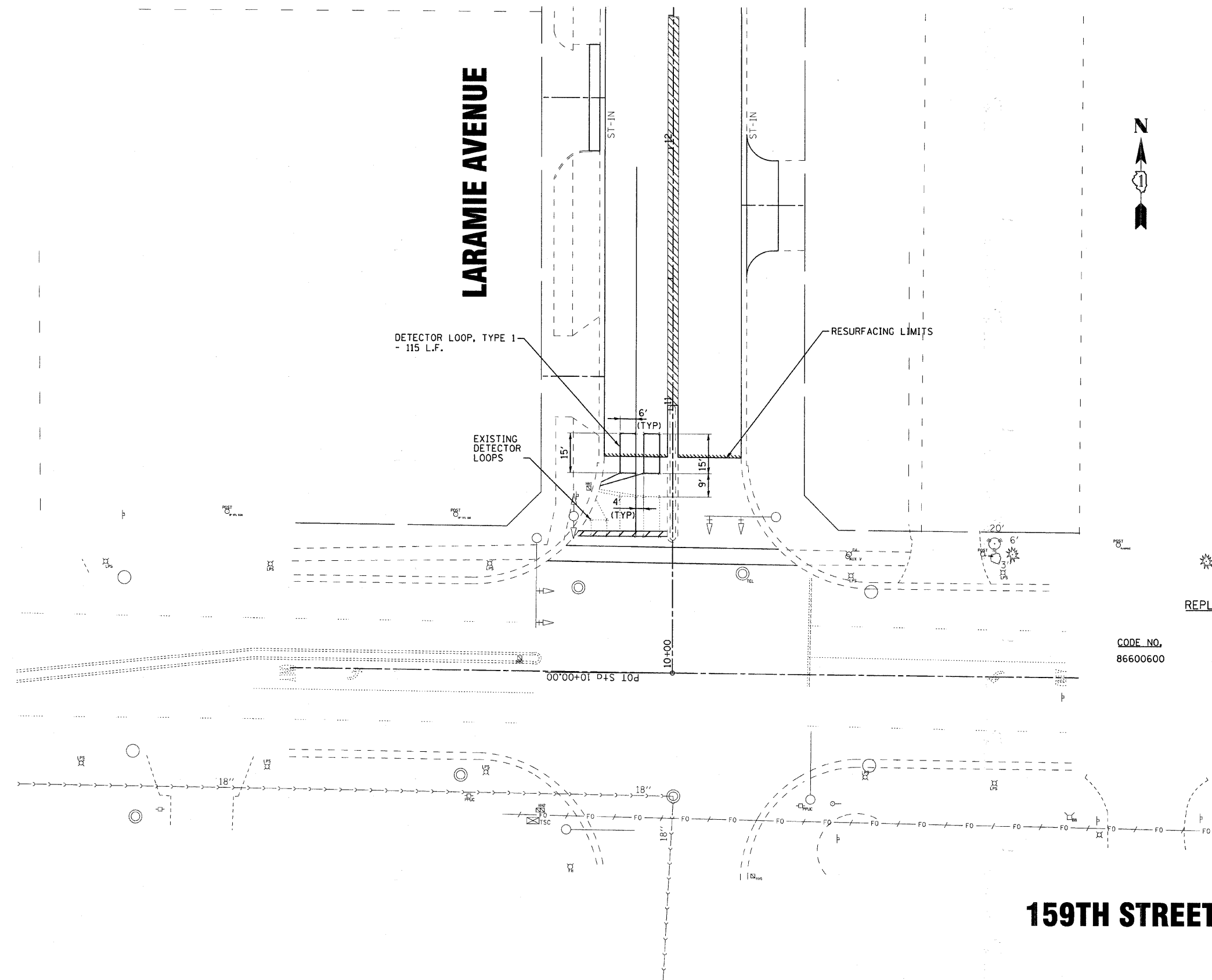
CARE IS TO BE TAKEN AS NOT TO DAMAGE ANY OF THE EXISTING SIGNAL CONDUITS AND EQUIPMENT. IF ANY OF THE TRAFFIC SIGNAL CONDUIT AND/OR EQUIPMENT IS DAMAGED, THE CONTRACTOR SHALL REPAIR AND/OR REPLACE THE CONDUIT AND/OR EQUIPMENT AT NO COST TO THE CITY.

NOTE:

THE PURPOSE OF THIS SHEET IS FOR REPLACING THE DETECTOR LOOPS ONLY. ALL OTHER INFORMATION SHOWN IS EITHER NOT RELATED OR FURTHER CLARIFIED IN OTHER SHEETS OF THE PLAN

**REPLACE ALL DETECTOR LOOPS AS SHOWN
(WITHIN THE RESURFACING LIMITS)**

CODE NO.	ITEM	UNIT	QUANTITY
86600600	DETECTOR LOOP REPLACEMENT	FOOT	115



COPYRIGHT © 2009 BY BAXTER & WOODMAN, INC. #PL10RVAE
 STATE OF ILLINOIS - PROFESSIONAL DESIGN FIRM #PENTBLAB
 LICENSE NO. - 184-0001 - EXPIRES 7/31/2011
 10/7/2009 2:28:26 PM \\c:\p\j\boxwood.com\project\m\m\m\c\cook\11-090312-detloop.sht



USER NAME = USER#	DESIGNED - CAC	REVISED - PER IDOT 10-6-09
FILE NAME = 090312-Detloop.sht	DRAWN - BCD	REVISED -
PLOT DATE = 10/7/2009	CHECKED - TMS	REVISED -
	DATE - 8-19-09	REVISED -

**CITY OF OAK FOREST, ILLINOIS
FAU 1020 LARAMIE AVENUE
STP (LAPP) IMPROVEMENTS**

DETECTOR LOOP REPLACEMENT DETAIL		F.A. RTE.	SECTION	COUNTY	TOTAL SHEETS	SHEET NO.
SCALE: 1"=20'		09-00094-00-RS		COOK	17	10
STA. TO STA.		FED. ROAD DIST. NO.	ILLINOIS	CONTRACT NO. 63322		
				FED. AID PROJECT		

F.A.U. RTE.	SECTION	COUNTY	TOTAL SHEETS	SHEET NO.
*	09-00094-00-RS	COOK	17	11
STA.	TO STA.			
FED. ROAD DIST. NO. C-91-742-09	ILLINOIS	FED AID PROJECT ARA-9003-(375)		

• FAU 1020 LARAMIE AVENUE
CONTRACT NO. 63322

VARIABLE - TO MEET EXISTING DIMENSIONS AND FIELD CONDITIONS (SEE NOTE ②)

PROP. CONC. CURB OR CURB AND GUTTER REPLACEMENT IN ACCORDANCE WITH STATE STANDARD 606001. (SEE NOTE ②)

SAW CUT FULL DEPTH - INCLUDED IN THE COST OF SIDEWALK, DRIVEWAY OR MEDIAN SURFACE REMOVAL PAY ITEM.

PROPOSED SIDEWALK, DRIVEWAY PAVEMENT, MEDIAN SURFACE OR SALT TOLERANT SOD AND TOP SOIL, 4" (100) SOD RESTORATION (SEE NOTE ①).

SUITABLE BACKFILL MATERIAL (INCLUDED IN THE COST OF CURB OR CURB AND GUTTER REMOVAL AND REPLACEMENT)

PROPOSED 3/4" (20) PREFORMED EXPANSION JOINT AT CONCRETE SIDEWALKS, DRIVEWAYS, AND MEDIANS. (INCLUDED IN THE COST OF CURB OR CURB AND GUTTER REMOVAL AND REPLACEMENT.)

UNSUITABLE SUB-BASE MATERIAL TO BE REMOVED, IF DIRECTED BY THE ENGINEER, SHALL BE REPLACED WITH EITHER SUB-BASE GRANULAR MATERIAL, TYPE B OR ADDITIONAL THICKNESS OF CONCRETE.

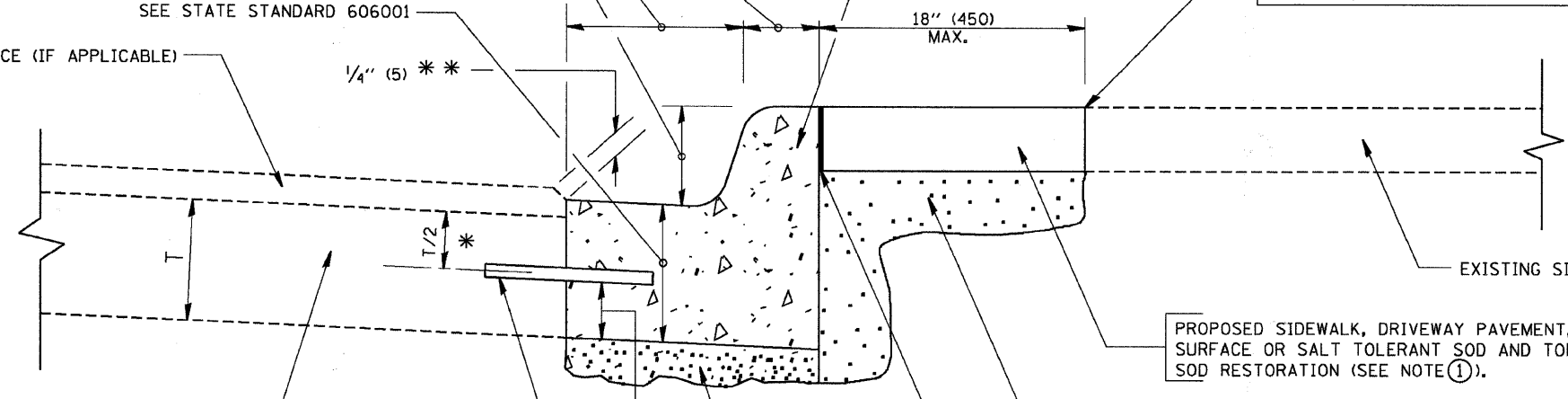
REMOVAL AND REPLACEMENT 4" (100) OR LESS IS INCLUDED IN THE COST OF CURB OR CURB AND GUTTER REMOVAL AND REPLACEMENT.

REMOVAL AND REPLACEMENT IN EXCESS OF 4" (100) WILL BE PAID FOR IN ACCORDANCE WITH ARTICLE 109.04 OF THE STANDARD SPECIFICATIONS.

PROPOSED #6 (20) EPOXY COATED TIE BARS 24" (600) LONG AT 24" (600) CENTERS WILL NOT BE PAID FOR SEPARATELY. DELETE EPOXY COATED TIE BARS IF EXISTING TIE BARS ARE USUABLE AS DETERMINED BY THE ENGINEER. (SEE NOTE ③).

BASIS OF PAYMENT:
THIS WORK WILL BE PAID FOR AT THE CONTRACT UNIT PRICE PER FOOT (METER) FOR "CURB REMOVAL AND REPLACEMENT" OR "COMBINATION CONCRETE CURB AND GUTTER REMOVAL AND REPLACEMENT".

EXISTING OR PROPOSED HMA SURFACE (IF APPLICABLE)



EXISTING CONCRETE PAVEMENT, CONCRETE BASE COURSE OR FLEXIBLE PAVEMENT

* 3" (75) MINIMUM FROM TOP AND BOTTOM OF THE CONCRETE PAVEMENT OR BASE COURSE.

* * IF THE FINAL SURFACE OF THE PAVEMENT IS CONCRETE, THE GUTTER IS TO BE FLUSH WITH THE PAVEMENT.

NOTE: ① SIDEWALK, DRIVEWAY PAVEMENT OR MEDIAN SURFACE SHALL BE SIMILAR TO THE MATERIAL BEING REMOVED AND WILL BE PAID FOR SEPARATELY.

~~SALT TOLERANT SOD AND TOP SOIL, 4" (100) RESTORATION WILL NOT BE PAID FOR SEPARATELY, BUT SHALL BE INCLUDED IN THE COST OF CURB OR CURB AND GUTTER REMOVAL AND REPLACEMENT.~~

② CURB OR CURB AND GUTTER REPLACEMENT SHALL MATCH THE SHAPE OF THE EXISTING CURB OR CURB AND GUTTER UNLESS OTHERWISE SPECIFIED.

③ FOR CURB OR CURB AND GUTTER REMOVAL AND REPLACEMENT ADJACENT TO FLEXIBLE PAVEMENT DELETE EPOXY COATED TIE BARS.

④ LONGITUDINAL BARS, IF ENCOUNTERED IN THE EXISTING CURB OR CURB AND GUTTER, ARE NOT TO BE REPLACED. CUTTING AND REMOVING LONGITUDINAL BARS SHALL BE INCLUDED IN THE COST OF CURB OR CURB AND GUTTER REMOVAL AND REPLACEMENT.

⑤ THE COST OF HMA SURFACE REMOVAL IN THE EXISTING GUTTER FLAG SHALL BE INCLUDED IN THE COST OF THE CURB AND GUTTER REMOVAL AND REPLACEMENT.

⑥ THE REMOVAL AND REPLACEMENT OF THE EXISTING CURB OR CURB AND GUTTER SHALL BE DONE IN ACCORDANCE WITH THE APPLICABLE PORTIONS OF SECTION 440 AND 606 OF THE STANDARD SPECIFICATIONS.

⑦ THE LOCATIONS OF REMOVAL AND REPLACEMENT OF EXISTING CURB OR CURB AND GUTTER SHALL BE DETERMINED BY THE RESIDENT ENGINEER AT THE TIME OF CONSTRUCTION.

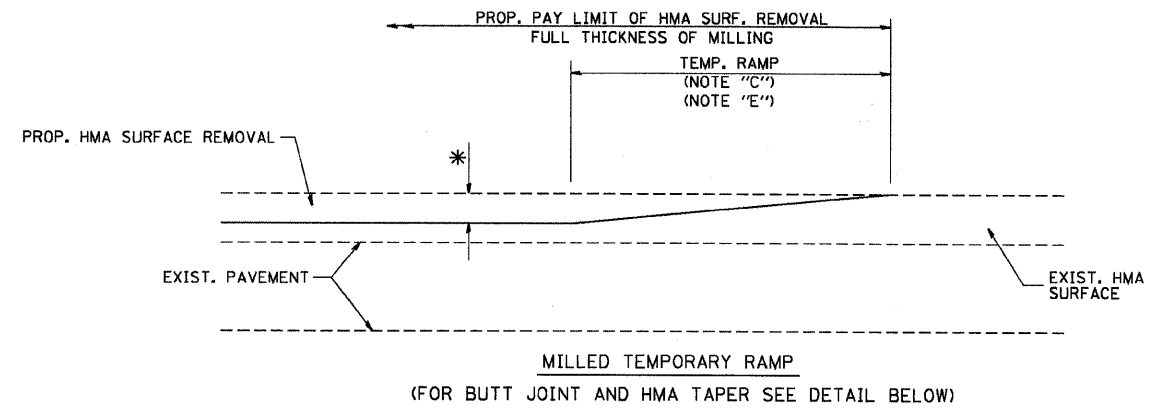
CURB OR CURB AND GUTTER REMOVAL AND REPLACEMENT

ALL DIMENSIONS ARE IN INCHES (MILLIMETERS) UNLESS OTHERWISE SHOWN.

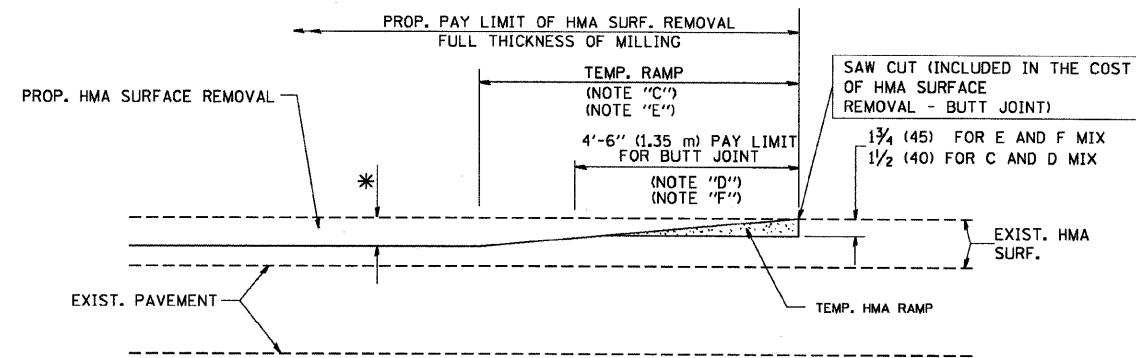
FILE NAME =	USER NAME = gogliano	DESIGNED - A. HOUSEH	REVISED - R. SHAH 10-03-96	STATE OF ILLINOIS DEPARTMENT OF TRANSPORTATION	CURB OR CURB AND GUTTER REMOVAL AND REPLACEMENT	F.A.U. RTE.	SECTION	COUNTY	TOTAL SHEETS	SHEET NO.
W:\data\22x34\bd24.dgn	DRAWN -	REVISOR - A. ABBAS 03-21-97	REVISED - A. ABBAS 03-21-97			*	09-00094-00-RS	COOK	17	11
PLOT SCALE = 5/8" = 1' IN.	CHECKED -	REVISOR - M. GOMEZ 01-22-01	REVISED - M. GOMEZ 01-22-01			BD600-06 (BD-24)		CONTRACT NO. 63322		
PLOT DATE = 1/4/2008	DATE - 03-11-94	REVISED - R. BORO 01-01-07	REVISED - R. BORO 01-01-07			FED. ROAD DIST. NO. 1	ILLINOIS	FED. AID PROJECT		

F.A.U. RTE.	SECTION	COUNTY	TOTAL SHEETS	SHEET NO.
09-00094-00-RS		COOK	17	12
STA.		TO STA.		
FED. ROAD DIST. NO.	ILLINOIS	FED AID PROJECT		
C-91-742-09		ARA-9003-(375)		

*FAU 1020 LARAMIE AVENUE
CONTRACT NO. 63322

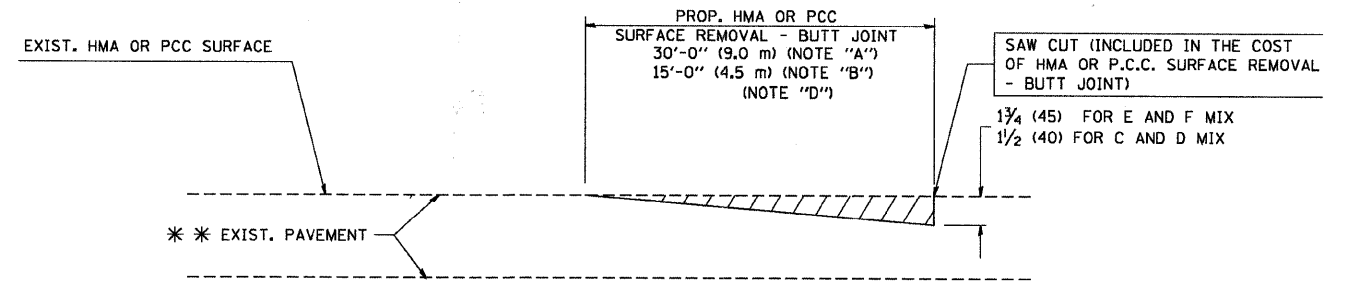


OPTION 1

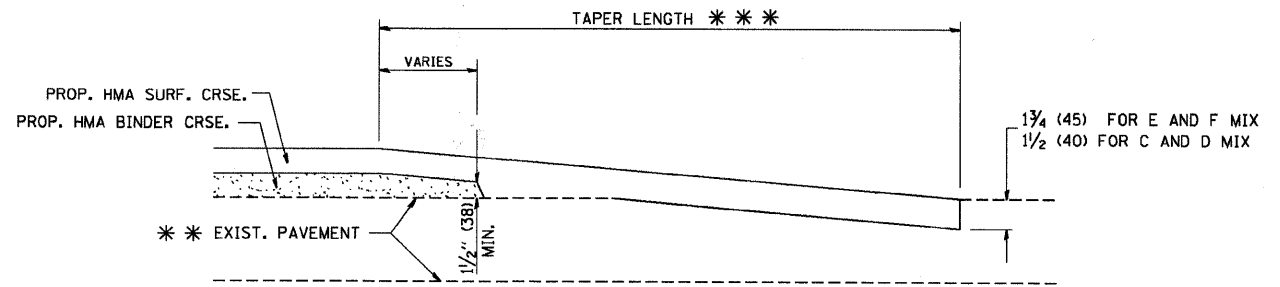


OPTION 2

TYPICAL TEMPORARY RAMP



BUTT JOINT DETAIL



HMA TAPER DETAIL

TYPICAL BUTT JOINT AND HMA TAPER FOR RESURFACING ONLY

*** PC CONCRETE, HMA OR HMA RESURFACED PAVEMENT.

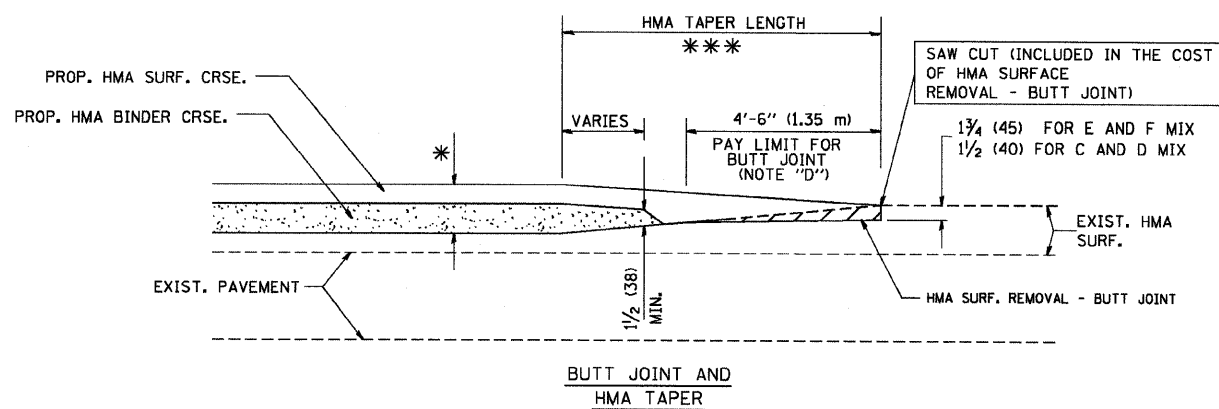
NOTES

- A: MAINLINE ROADWAYS AND MAJOR SIDE ROADS.
 - B: MINOR SIDE ROADS.
 - C: THE TEMP. RAMP SHALL BE CONSTRUCTED IMMEDIATELY UPON REMOVAL OF THE EXISTING HMA SURFACE.
 - D: THE BUTT JOINT SHALL BE CONSTRUCTED IMMEDIATELY PRIOR TO PLACING THE PROPOSED HMA COURSES.
 - E: TAPER THE TEMP. RAMP AT A RATE OF 3'-0" (900 mm) PER 1 INCH (25 mm) OF MILLING THICKNESS.
 - F: INSTALLATION AND REMOVAL OF THE 4'-6" (1.35 m) TEMP. RAMP IS INCLUDED IN COST OF HMA SURFACE REMOVAL - BUTT JOINT
 - G: SEE ARTICLE 406.08 AND 406.14 OF THE STANDARD SPECIFICATIONS FOR "HMA AND/OR PCC SURFACE REMOVAL, BUTT JOINT".
- * SEE TYPICAL SECTIONS FOR MILLING THICKNESS.
- *** 20'-0" (6.1 m) PER 1 (25) RESURFACING (NOTE "A")
10'-0" (3.0 m) PER 1 (25) RESURFACING (NOTE "B")

BASIS OF PAYMENT:

THE BUTT JOINT WILL BE PAID FOR AT THE CONTRACT UNIT PRICE PER SQUARE YARD (SQUARE METER) FOR "HOT-MIX ASPHALT SURFACE REMOVAL - BUTT JOINT" OR FOR "PORTLAND CEMENT CONCRETE SURFACE REMOVAL - BUTT JOINT".

ALL DIMENSIONS ARE IN INCHES (MILLIMETERS) UNLESS OTHERWISE SHOWN.



TYPICAL BUTT JOINT AND HMA TAPER FOR MILLING AND RESURFACING

FILE NAME =
W:\distatd\22x34\bd32.dgn

USER NAME = gaglianobt	DESIGNED - M. DE YONG	REVISED - R. SHAH 10-25-94
PLOT SCALE = 50.0000' / IN.	DRAWN -	REVISED - A. ABBAS 03-21-97
PLOT DATE = 1/4/2008	CHECKED -	REVISED - M. GOMEZ 04-06-01
	DATE - 06-13-90	REVISED - R. BORO 01-01-07

**STATE OF ILLINOIS
DEPARTMENT OF TRANSPORTATION**

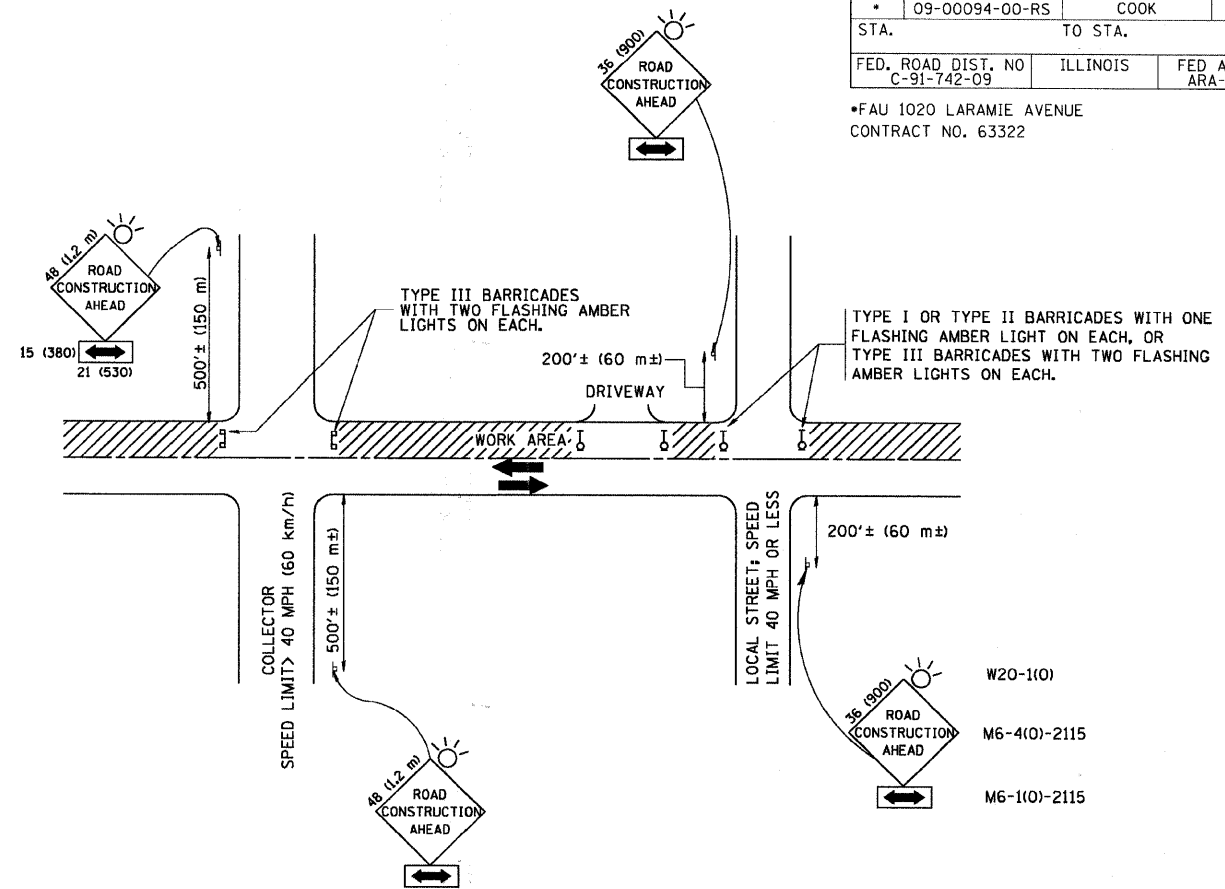
**BUTT JOINT AND
HMA TAPER DETAILS**

SCALE: NONE SHEET NO. 1 OF 1 SHEETS STA. TO STA.

F.A. RTE.	SECTION	COUNTY	TOTAL SHEETS	SHEET NO.
09-00094-00-RS		COOK	17	12
BD400-05 BD32		CONTRACT NO. 63322		
FED. ROAD DIST. NO. 1 ILLINOIS FED. AID PROJECT				

F.A.U. RTE.	SECTION	COUNTY	TOTAL SHEETS	SHEET NO.
* 09-00094-00-RS		COOK	17	13
STA.		TO STA.		
FED. ROAD DIST. NO. C-91-742-09	ILLINOIS	FED AID PROJECT ARA-9003-(375)		

*FAU 1020 LARAMIE AVENUE
CONTRACT NO. 63322



TRAFFIC CONTROL AND PROTECTION FOR SIDE ROADS, INTERSECTIONS, AND DRIVEWAYS

NOTES:

A. FOR NO LANE RESTRICTION ON THE SIDE ROAD OR DRIVEWAYS

1. SIDE ROAD WITH A SPEED LIMIT OF 40 MPH (60 km/h) OR LESS AS SHOWN ON THE DRAWING AND AS DIRECTED BY THE ENGINEER:

a) ONE **ROAD CONSTRUCTION AHEAD** SIGN 36 x 36 (900x900) WITH A FLASHER AND FLAG MOUNTED ON IT APPROXIMATELY 200' (60 m) IN ADVANCE OF THE MAIN ROUTE.

b) THE CLOSED PORTION OF THE MAIN ROUTE SHALL BE PROTECTED BY BLOCKING WITH TYPE I, TYPE II OR TYPE III BARRICADES, 1/3 OF THE CROSS SECTION OF THE CLOSED PORTION.

2. SIDE ROAD WITH A SPEED LIMIT GREATER THAN 40 MPH (60 km/h) AS SHOWN ON THE DRAWING AND AS DIRECTED BY THE ENGINEER:

a) ONE **ROAD CONSTRUCTION AHEAD** SIGN 48 x 48 (1.2 m x 1.2 m) WITH A FLASHER MOUNTED ON IT APPROXIMATELY 500' (150 m) IN ADVANCE OF THE MAIN ROUTE.

b) THE CLOSED PORTION OF THE MAIN ROUTE SHALL BE PROTECTED BY BLOCKING WITH TYPE III BARRICADES, 1/2 OF THE CROSS SECTION OF THE CLOSED PORTION.

3. WHEN THE SIDE ROAD LIES BETWEEN THE BEGINNING OF THE MAINLINE SIGNING AND THE WORK ZONE, A SINGLE HEADED ARROW (M6-1) SHALL BE USED IN LIEU OF THE DOUBLE HEADED ARROW (M6-4).

B. FOR A LANE CLOSURE ON A SIDE ROAD OR DRIVEWAY:

USE APPLICABLE PORTIONS OF THE TYPICAL APPLICATION OF TRAFFIC CONTROL DEVICES (STD. 701501, STD. 701606 OR THE APPROPRIATE STANDARD). THE SPACING OF SIGNS AND BARRICADES SHALL BE ADJUSTED FOR FIELD CONDITIONS AS DIRECTED BY THE ENGINEER. THE DIRECTIONAL ARROW SHALL BE COVERED OR REMOVED WHEN NO LONGER CONSISTENT WITH THE SIDE ROAD LANE CLOSURE.

C. ADVANCE WARNING SIGNS ARE TO BE OMITTED ON DRIVEWAY UNLESS OTHERWISE NOTED.

D. THE TRAFFIC CONTROL AND PROTECTION FOR SIDE ROADS, INTERSECTIONS, AND DRIVEWAYS SHALL BE INCIDENTAL TO THE COST OF SPECIFIED TRAFFIC CONTROL STANDARDS OR ITEMS.

All dimensions are in millimeters (inches) unless otherwise shown.

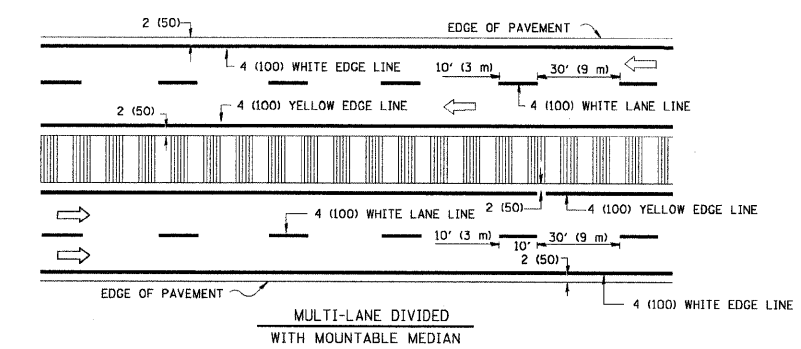
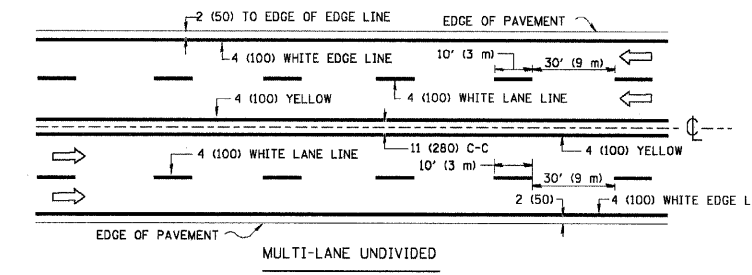
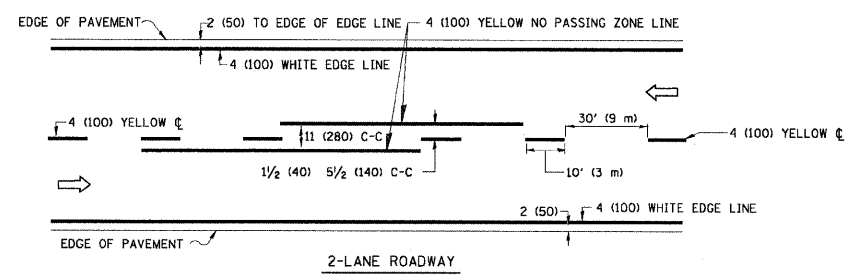
FILE NAME =	USER NAME = geglionbt	DESIGNED - LHA	REVISED - J. OBERLE 10-18-95
W:\diststd\22x34\col8.dgn		DRAWN -	REVISED - A. HOUSEH 03-06-96
	PLOT SCALE = 50.000 ' / IN.	CHECKED -	REVISED - A. HOUSEH 10-15-96
	PLOT DATE = 1/4/2008	DATE - 06-89	REVISED - T. RAMMACHER 01-06-00

STATE OF ILLINOIS
DEPARTMENT OF TRANSPORTATION

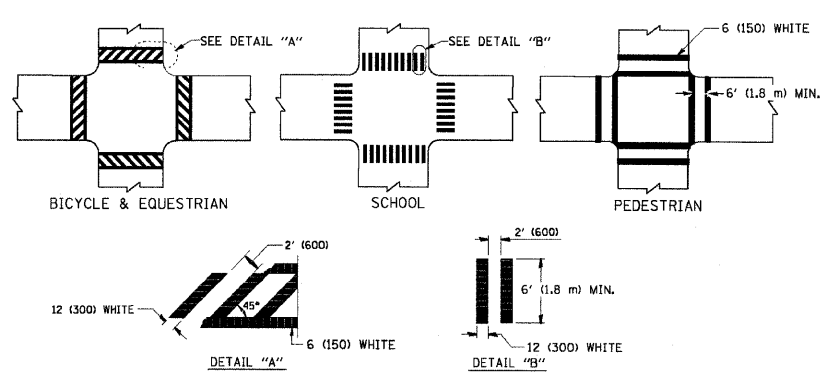
TRAFFIC CONTROL AND PROTECTION FOR
SIDE ROADS, INTERSECTIONS, AND DRIVEWAYS

SCALE: NONE SHEET NO. 1 OF 1 SHEETS STA. TO STA.

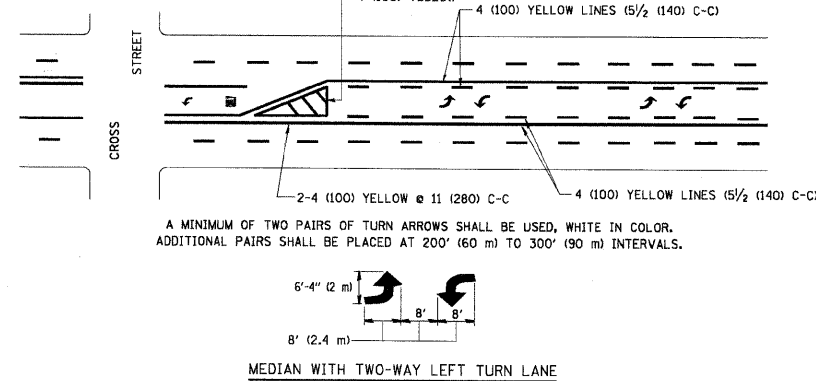
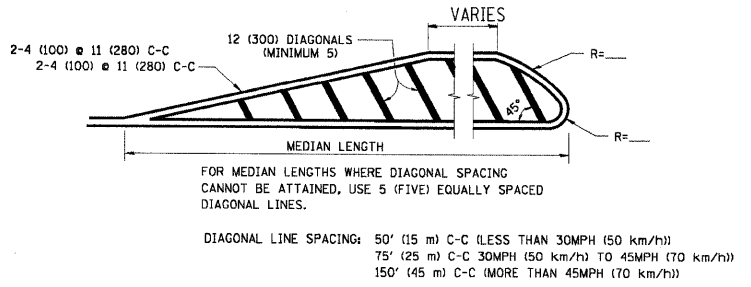
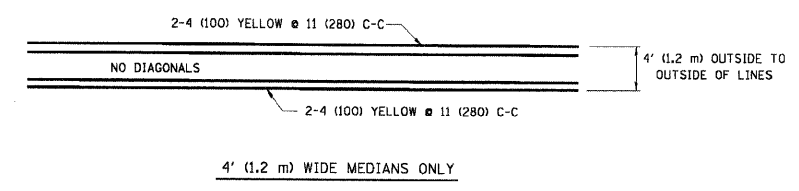
F.A. RTE.	SECTION	COUNTY	TOTAL SHEETS	SHEET NO.
* 09-00094-00-RS		COOK	17	13
TC-10		CONTRACT NO. 63322		
FED. ROAD DIST. NO. 1 ILLINOIS		FED. AID PROJECT		



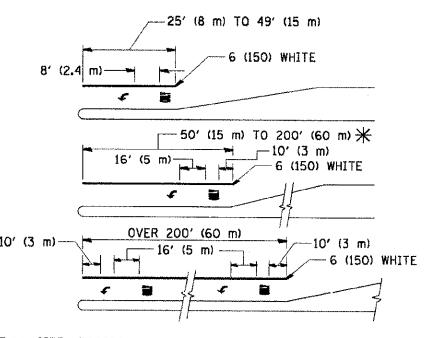
TYPICAL LANE AND EDGE LINE MARKING



TYPICAL CROSSWALK MARKING

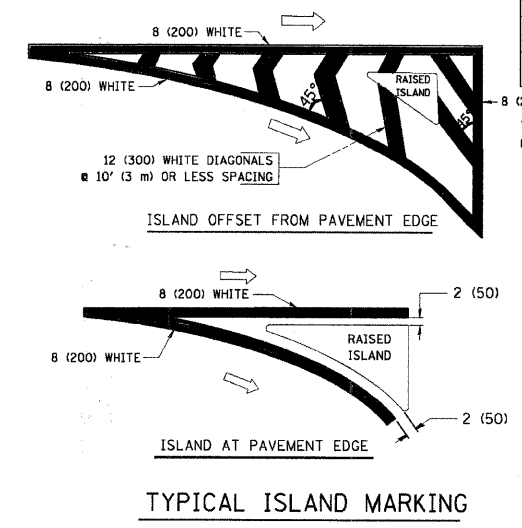


TYPICAL PAINTED MEDIAN MARKING



FULL SIZE LETTERS 8' (2.4 m) AND ARROWS SHALL BE USED.
 * AREA = 15.6 SQ. FT. (1.5 m²) * AREA = 20.8 SQ. FT. (1.9 m²)
 * TURN LANES IN EXCESS OF 400' (120 m) IN LENGTH MAY HAVE AN ADDITIONAL SET OF ARROW - "ONLY" INSTALLED MIDWAY BETWEEN THE OTHER TWO SETS OF ARROW - "ONLY".

TYPICAL TURN LANE MARKING



TYPICAL ISLAND MARKING

TYPE OF MARKING	WIDTH OF LINE	PATTERN	COLOR	SPACING / REMARKS
CENTERLINE ON 2 LANE PAVEMENT	4 (100)	SKIP-DASH	YELLOW	10' (3 m) LINE WITH 30' (9 m) SPACE
CENTERLINE ON MULTI-LANE UNDIVIDED PAVEMENT	2 @ 4 (100)	SOLID	YELLOW	11 (280) C-C
NO PASSING ZONE LINES: FOR ONE DIRECTION	4 (100)	SOLID	YELLOW	5/2 (140) C-C FROM SKIP-DASH CENTERLINE
NO PASSING ZONE LINES: FOR BOTH DIRECTIONS	2 @ 4 (100)	SOLID	YELLOW	11 (280) C-C OMIT SKIP-DASH CENTERLINE BETWEEN
LANE LINES	4 (100)	SKIP-DASH	WHITE	10' (3 m) LINE WITH 30' (9 m) SPACE
DOTTED LINES (EXTENSIONS OF CENTER, LANE OR TURN LANE MARKINGS)	5 (125) ON FREEWAYS	SKIP-DASH	WHITE	SAME AS LINE BEING EXTENDED
EDGE LINES	4 (100)	SOLID	YELLOW-LEFT WHITE-RIGHT	OUTLINE MOUNTABLE MEDIANS IN YELLOW; EDGE LINES ARE NOT USED NEXT TO BARRIER CURB
TURN LANE MARKINGS	6 (150) LINE; FULL SIZE LETTERS & SYMBOLS (8' (2.4m))	SOLID	WHITE	SEE TYPICAL TURN LANE MARKING DETAIL
TWO WAY LEFT TURN MARKING	2 @ 4 (100) EACH DIRECTION	SKIP-DASH AND SOLID	YELLOW	10' (3 m) LINE WITH 30' (9 m) SPACE FOR SKIP-DASH 5/2 (140) C-C BETWEEN SOLID LINE AND SKIP-DASH LINE
	8' (2.4m) LEFT ARROW	IN PAIRS	WHITE	SEE TYPICAL TWO-WAY LEFT TURN MARKING DETAIL
CROSSWALK LINES (PEDESTRIAN)	2 @ 6 (150)	SOLID	WHITE	NOT LESS THAN 6' (1.8 m) APART
A. DIAGONALS (BIKE & EQUESTRIAN)	12 (300) @ 45°	SOLID	WHITE	2' (600) APART
B. LONGITUDINAL BARS (SCHOOL)	12 (300) @ 90°	SOLID	WHITE	2' (600) APART
STOP LINES	24 (600)	SOLID	WHITE	SEE TYPICAL CROSSWALK MARKING DETAILS.
PAINTED MEDIANS	2 @ 4 (100) WITH 12 (300) DIAGONALS @ 45°	SOLID	YELLOW; TWO WAY TRAFFIC WHITE; ONE WAY TRAFFIC	11 (280) C-C FOR THE DOUBLE LINE SEE TYPICAL PAINTED MEDIAN MARKING.
	NO DIAGONALS USED FOR 4' (1.2 m) WIDE MEDIANS			
GORE MARKING AND CHANNELIZING LINES	8 (200) WITH 12 (300) DIAGONALS @ 45°	SOLID	WHITE	DIAGONALS: 15' (4.5 m) C-C (LESS THAN 30MPH (50 km/h)) 20' (6 m) C-C 30MPH (50 km/h) TO 45MPH (70 km/h) 30' (9 m) C-C (OVER 45MPH (70 km/h))
RAILROAD CROSSING	24 (600) TRANSVERSE LINES; "RR" IS 6' (1.8 m) LETTERS; 16 (400) LINE FOR "X"	SOLID	WHITE	SEE STATE STANDARD 780001 AREA OF: "R"=3.6 SQ. FT. (0.33 m ²) EACH "X"=54.0 SQ. FT. (5.0 m ²)
SHOULDER DIAGONALS	12 (300) @ 45°	SOLID	WHITE - RIGHT YELLOW - LEFT	50' (15 m) C-C (LESS THAN 30MPH (50 km/h)) 75' (25 m) C-C (30 MPH (50 km/h) TO 45MPH (70 km/h)) 150' (45 m) C-C (OVER 45MPH (70 km/h))

FOR FURTHER DETAILS ON PAVEMENT MARKING REFER TO STANDARD SPECIFICATIONS FOR ROAD AND BRIDGE CONSTRUCTION AND STATE STANDARD 780001.

All dimensions are in inches (millimeters) unless otherwise shown.

FILE NAME =	USER NAME = drivakosgn	DESIGNED - EVERS	REVISED - T. RAMMACHER 10-27-94
0:\pwwork\pwwork\drivakosgn\d0108315\to3.dgn		DRAWN -	REVISED - C. JUCIUS 09-09-09
	PLOT SCALE = 50.0000' / IN.	CHECKED -	REVISED -
	PLOT DATE = 9/9/2009	DATE - 03-19-90	REVISED -

STATE OF ILLINOIS
DEPARTMENT OF TRANSPORTATION

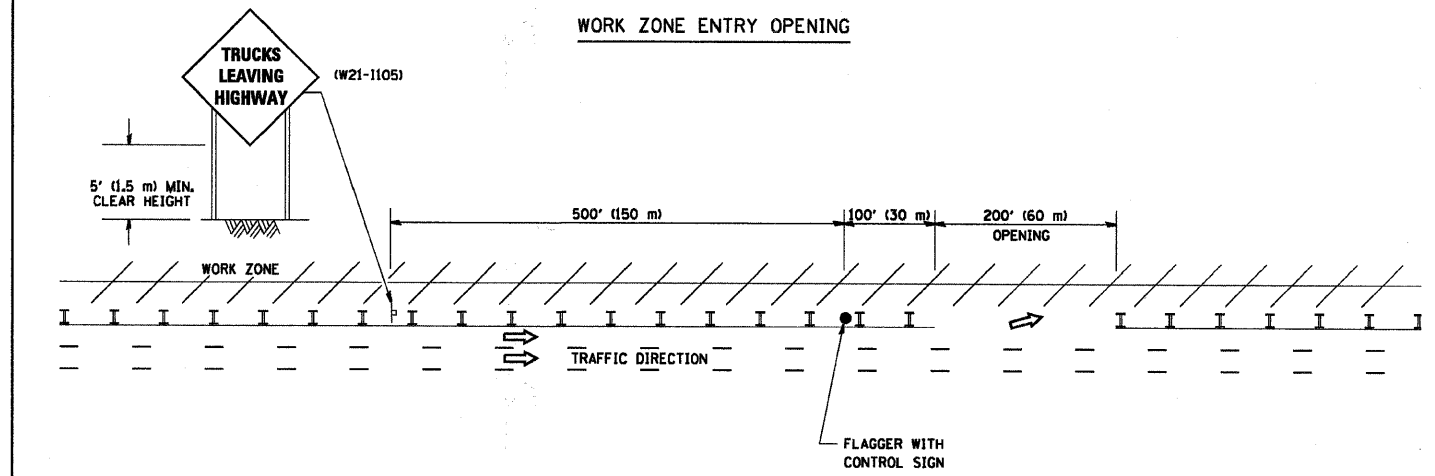
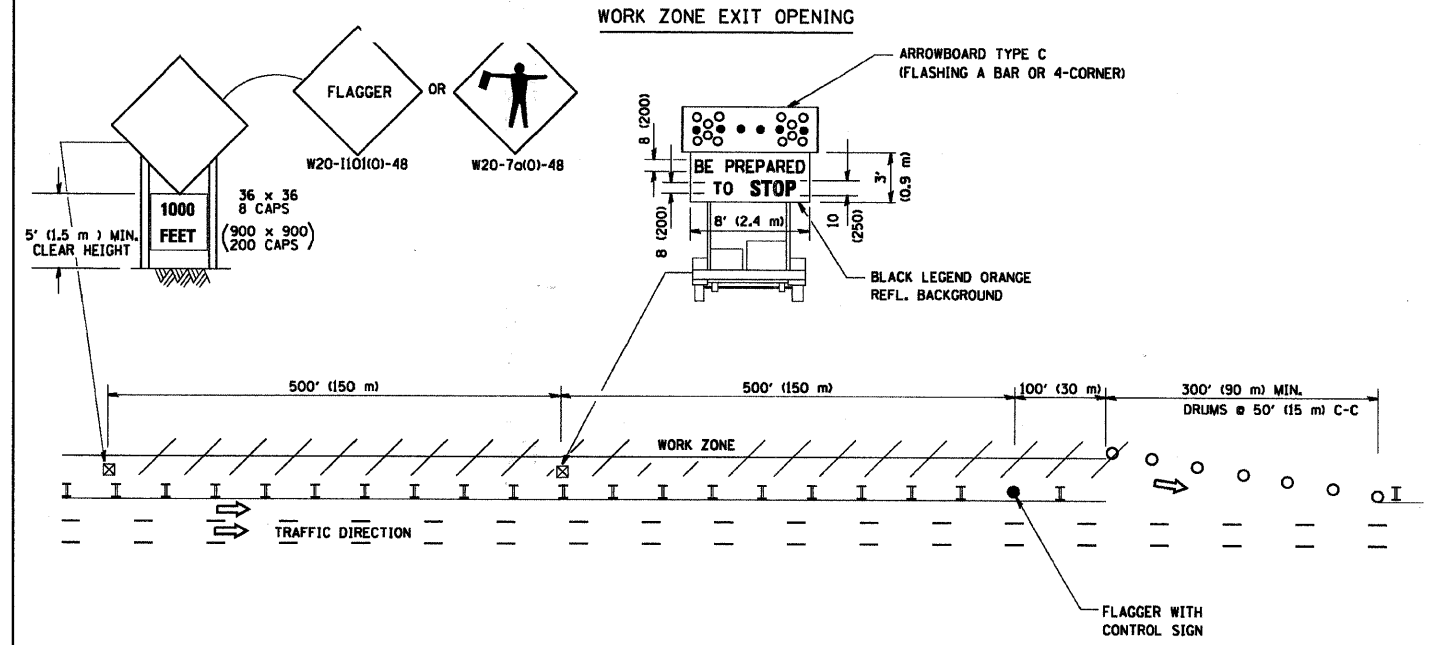
DISTRICT ONE			
TYPICAL PAVEMENT MARKINGS			
SCALE: NONE	SHEET NO. 1 OF 1 SHEETS	STA. TO STA.	

F.A.U. RTE.	SECTION	COUNTY	TOTAL SHEETS	SHEET NO.
09-00094-00-RS	COOK	ILLINOIS	17	14
TC-13		CONTRACT NO. 63322		
FED. ROAD DIST. NO. 1 (ILLINOIS) FED. AID PROJECT				

F.A.U. RTE.	SECTION	COUNTY	TOTAL SHEETS	SHEET NO.
*		COOK	17	15
STA.	TO STA.			
FED. ROAD DIST. NO.	ILLINOIS	FED AID PROJECT		

*FAU 1020 LARAMIE AVENUE
CONTRACT NO. 63322

SIGNING FOR FLAGGING OPERATIONS AT WORK ZONE OPENINGS



NOTES:

1. The Arrowboard, the Flagger Ahead trailer mounted sign, and the Trucks Leaving Highway sign shall be removed or turned away from traffic and the exit and entry openings shall be closed when the flagging operation ceases.
2. Work Zone Exit Openings should be a minimum of one half mile apart.
3. Exiting the work zone at any place other than at a Work Zone Exit Opening will be prohibited.
4. All vehicles shall enter the work zone at entry openings, using their turn signals to warn motorists

ALL DIMENSIONS ARE IN INCHES (MILLIMETERS) UNLESS OTHERWISE SHOWN

FILE NAME = W:\diststd\22x34\to18.dgn	USER NAME = goglienobt	DESIGNED -	REVISED - D.W.S. 08-98
		DRAWN -	REVISED - J.A.F. 04-03
	PLOT SCALE = 50.000' / IN.	CHECKED -	REVISED - J.A.F. 02-06
	PLOT DATE = 1/4/2008	DATE -	REVISED - S.P.B. 01-07

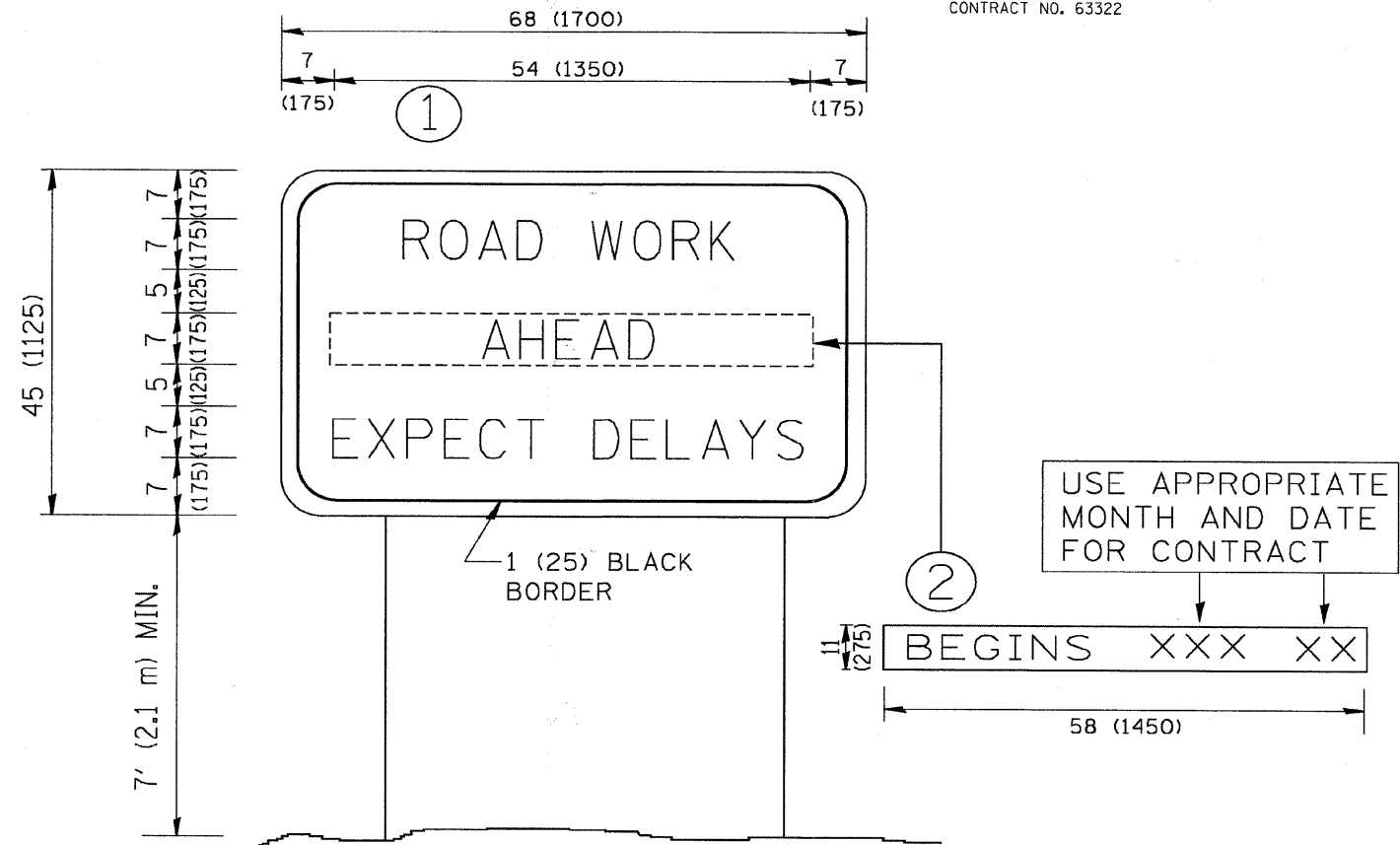
**STATE OF ILLINOIS
DEPARTMENT OF TRANSPORTATION**

SIGNING FOR FLAGGING OPERATIONS AT WORK ZONE OPENINGS	
SCALE: NONE	SHEET NO. 1 OF 1 SHEETS
STA.	TO STA.

F.A.U. RTE.	SECTION	COUNTY	TOTAL SHEETS	SHEET NO.
*	09-00094-00-RS	COOK	17	15
TC-18		CONTRACT NO. 63322		
FED. ROAD DIST. NO. 1 ILLINOIS FED. AID PROJECT				

F.A.U. RTE.	SECTION	COUNTY	TOTAL SHEETS	SHEET NO.
* 09-00094-00-RS		COOK	17	16
STA.	TO STA.			
FED. ROAD DIST. NO. C-91-742-09	ILLINOIS	FED AID PROJECT ARA-9003-(375)		

*FAU 1020 LARAMIE AVENUE
CONTRACT NO. 63322



NOTES:

1. USE BLACK LETTERING ON ORANGE BACKGROUND.
2. ERECT SIGNS IN ADVANCE OF THE LOCATION FOR THE "ROAD CONSTRUCTION AHEAD" SIGN AT LOCATIONS AS DIRECTED BY THE ENGINEER.
3. ERECT SIGN ① WITH INSTALLED PANEL ② ONE WEEK PRIOR TO THE START OF CONSTRUCTION.
4. REMOVE PANEL ② SOON AFTER THE START OF CONSTRUCTION.
5. SEE SPECIAL PROVISION FOR "TEMPORARY INFORMATION SIGNING" FOR ADDITIONAL INFORMATION.
6. ONE SIGN ASSEMBLY EQUALS 25.70 SQ. FT. (2.3 SQ. M.)
7. SHALL BE PAID FOR AS TEMPORARY INFORMATION SIGNING.

ALL DIMENSIONS ARE IN INCHES (MILLIMETERS)
UNLESS OTHERWISE SHOWN.

FILE NAME = W:\diststd\22x34\to22.dgn	USER NAME = gaglienobt	DESIGNED - DRAWN -	REVISED - REVISED -
PLOT SCALE = 50.000 ' / IN.	CHECKED -	REVISED -	REVISED -
PLOT DATE = 1/4/2009	DATE -	REVISED -	REVISED -

**STATE OF ILLINOIS
DEPARTMENT OF TRANSPORTATION**

**ARTERIAL ROAD
INFORMATION SIGN**

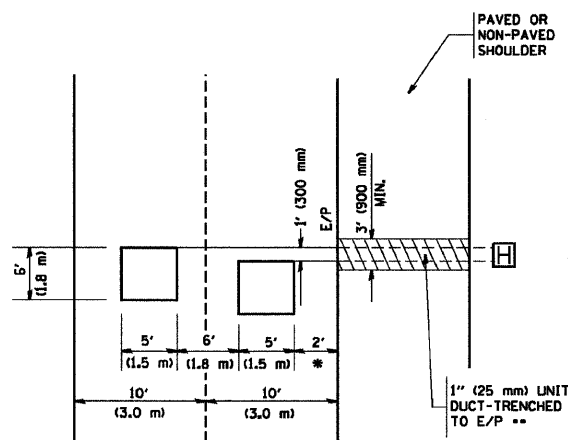
SCALE: NONE SHEET NO. 1 OF 1 SHEETS STA. TO STA.

F.A.U. RTE.	SECTION	COUNTY	TOTAL SHEETS	SHEET NO.
* 09-00094-00-RS		COOK	17	16
TC-22		CONTRACT NO. 63322		
FED. ROAD DIST. NO. 1 ILLINOIS FED. AID PROJECT				

F.A.U. RTE.	SECTION	COUNTY	TOTAL SHEETS	SHEET NO.
*	09-00094-00-RS	COOK	17	17
STA.		TO STA.		
FED. ROAD DIST. NO.	ILLINOIS	FED AID PROJECT		
C-91-742-09		ARA-9003-(375)		

LOOPS NEXT TO SHOULDERS

PROVIDE A PAVEMENT REPLACEMENT NOTE WHICH SHOULD EQUAL 3' (900 mm) X WIDTH OF PAVED SHOULDER.

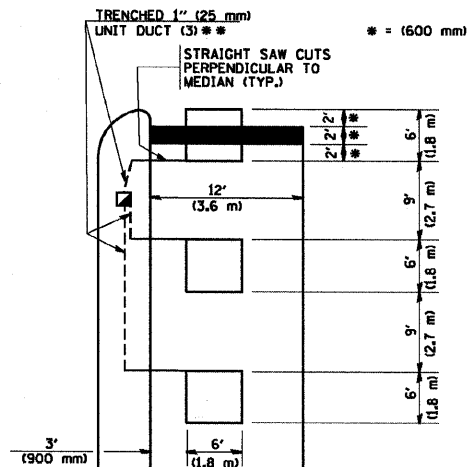


* = (600 mm)

** UNIT DUCT IS TO BE SHOWN ON PLAN SHEETS BUT SHALL NOT BE INCLUDED IN THE PAY ITEMS.

**LEFT TURN LANES WITH MEDIANS
VOLUME DENSITY ("FAR OUT" DETECTION)
ON SAME APPROACH
(PROTECTED / PERMITTED LEFT TURN PHASING)**

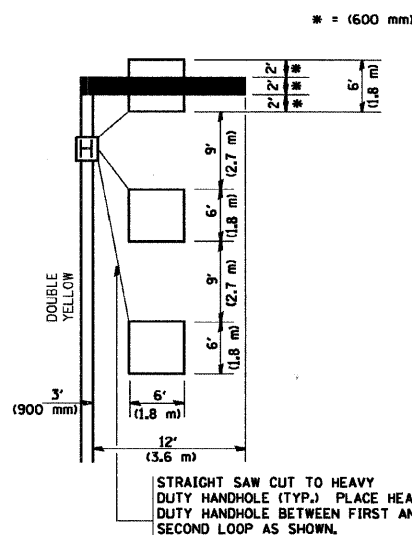
HANDHOLE LOCATION MAY VARY DEPENDING ON GEOMETRICS AND DESIGN OF TRAFFIC SIGNALS. HEAVY-DUTY HANDHOLES TO BE USED WHEN THE MEDIAN IS MOUNTABLE. REFER TO STANDARD 814001 TO ENSURE THAT HANDHOLE FITS IN MEDIAN.



** UNIT DUCT IS TO BE SHOWN ON PLAN SHEETS BUT SHALL NOT BE INCLUDED IN THE PAY ITEMS.

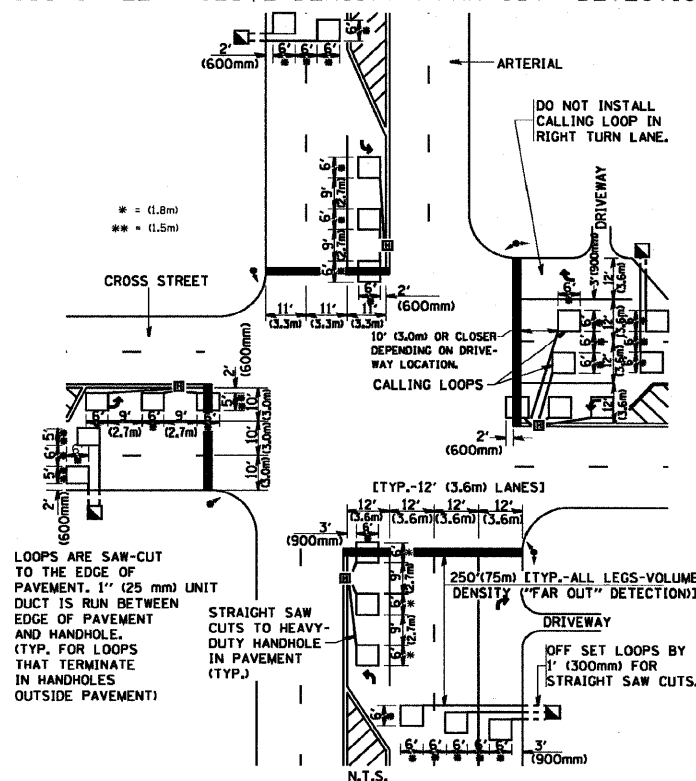
NOTE: DUAL LEFT TURNS NOT SHOWN REFER TO PLAN SHEET FOR DETECTOR LOOP REPLACEMENT

**LEFT TURN LANES WITHOUT MEDIANS
VOLUME DENSITY ("FAR OUT" DETECTION)
ON SAME APPROACH
(PROTECTED / PERMITTED LEFT TURN PHASING)**



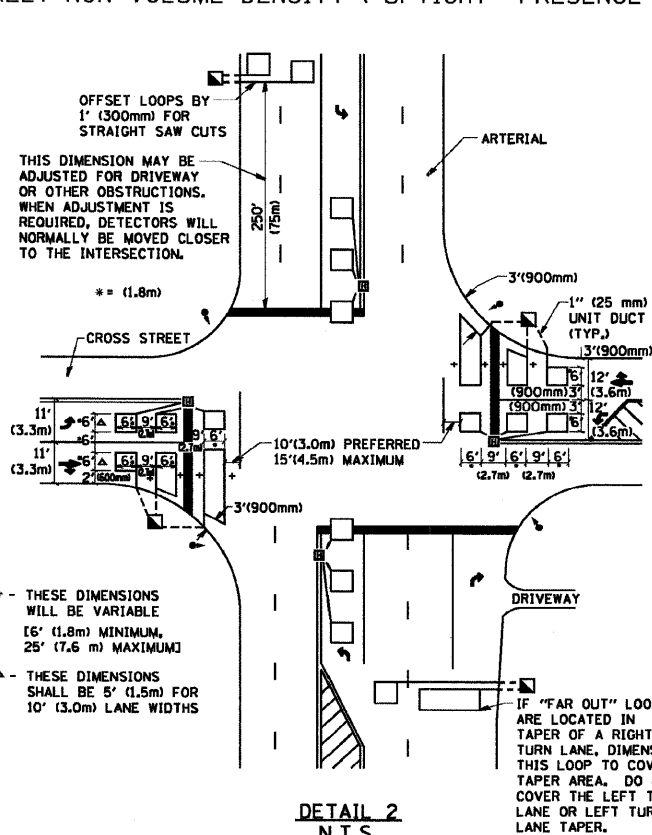
NOTE: DUAL LEFT TURNS NOT SHOWN REFER TO PLAN SHEET FOR DETECTOR LOOP REPLACEMENT

**ARTERIAL-VOLUME DENSITY ("FAR OUT" DETECTION)
CROSS STREET-VOLUME DENSITY ("FAR OUT" DETECTION)**



**DETAIL 1
N.T.S.**

**ARTERIAL-VOLUME DENSITY ("FAR OUT" DETECTION)
CROSS STREET-NON VOLUME DENSITY ("UPTIGHT" PRESENCE DETECTION)**



**DETAIL 2
N.T.S.**

NOTES:

- VEHICLES LOOP DETECTORS** *FAU 1020 LARAMIE AVENUE CONTRACT NO. 63322
- * ALL LEAD IN CABLE SHALL BE TWO CONDUCTOR NO. 14 TWISTED, SHIELDED.
- * EACH DETECTOR LOOP SHALL HAVE ITS OWN SAW CUT FROM THE LOOP TO THE EDGE OF PAVEMENT OR TO A HANDHOLE IN THE PAVEMENT.
- * EACH DETECTOR LOOP SHALL HAVE ITS OWN ONE INCH (25 mm) UNIT DUCT BETWEEN THE EDGE OF PAVEMENT AND THE FIRST HANDHOLE OR JUNCTION BOX. EACH UNIT DUCT RUN SHALL BE SHOWN ON THE PLANS BY THE DESIGNER, BUT SHALL NOT BE PAID FOR SEPARATELY. THIS ITEM IS INCIDENTAL TO THE PAY ITEM FOR DETECTOR LOOPS.
- * ONE DIMENSION OF ALL DETECTOR LOOPS SHALL BE SIX FEET (1.8 m)
- * EACH LANE OF NON-LOCKING, PRESENCE DETECTION AND EACH LANE OF A DOUBLE LEFT TURN LANE REQUIRES A SEPARATE INDUCTIVE LOOP DETECTOR AND LEAD IN CABLE.
- * WHEN NON-LOCKING, PRESENCE DETECTION IS USED, MORE THAN ONE LOOP PER LANE IS REQUIRED BEHIND THE STOP BAR (i.e. 1-1/2, 1-3/4, 2).
- * WHEN SYSTEM LOOPS ARE REQUIRED ON AN APPROACH OF AN INTERSECTION, THE LOOPS USED FOR VOLUME DENSITY AND INTERSECTION TIMING SHALL ALSO BE USED AS SYSTEM DETECTORS. EACH ONE OF THESE TYPE OF LOOPS REQUIRES A SEPARATE TWO CONDUCTOR NO. 14 TWISTED SHIELDED CABLE AND A SEPARATE INDUCTIVE LOOP DETECTOR WHEN NEW CONTROLLERS ARE UTILIZED. THE DESIGNER SHALL LABEL THESE TYPES OF LOOPS AS "INTERSECTION AND SAMPLING (SYSTEM) DETECTORS" ON THE SIGNAL LAYOUT, THE INTERCONNECT PLAN AND THE SYSTEM CABLE PLAN. WHEN AN EXISTING CONTROLLER IS UTILIZED FOR THIS TYPE OF DETECTION, THE PAY ITEM "INDUCTIVE LOOP DETECTOR WITH SYSTEM OUTPUT" SHOULD BE USED.

PLACEMENT OF DETECTORS

THE FOLLOWING FIGURES REPRESENT THE MOST COMMON DETECTOR LOOP LOCATIONS AND SIZES. ADJUSTMENTS WILL BE NECESSARY FOR SPECIFIC GEOMETRIC CONSIDERATIONS.

LOCATIONS AND DEMENSIONS OF DETECTOR LOOPS ARE REQUIRED ON ALL SIGNAL LAYOUT PLAN SHEETS.

"FAR OUT" DETECTION REFERS TO LOCKING, PRESENCE TYPE DETECTION LOCATED IN THRU LANES, RIGHT TURN LANES, AND RIGHT TURN LANE TAPER AREAS (IF APPLICABLE), USUALLY 250' (75 m) IN ADVANCE OF STOP BARS. "UPTIGHT" DETECTION REFERS TO NON-LOCKING PRESENCE TYPE DETECTION LOCATED IN ALL LANES AND 10'-15' (3.0 m-4.5 m) BEHIND THE CROSSING STREET'S EDGE OF PAVEMENT EXTENDED.

NOTE:

ALL DETAILS AND NOTES SHOWN ARE FROM THE I.D.O.T. DISTRICT 1 TRAFFIC SIGNAL DESIGN GUIDELINES DATED JANUARY 1995

THIS DRAWING HAS BEEN PREPARED TO ASSIST THE RESIDENT ENGINEER FOR ALL ROADWAY RESURFACING OR S.M.A.R.T. PROJECTS WHERE THE DIMENSIONS ARE NOT SHOWN ON THE PLANS AND THE FINAL LOCATIONS FOR CROSSWALKS OR STOP BARS ARE NOT DETERMINED.

FILE NAME = W:\dist\td\22x34\ts07.dgn	USER NAME = goglianob	DESIGNED -	REVISED -	STATE OF ILLINOIS DEPARTMENT OF TRANSPORTATION	DISTRICT 1 - DETECTOR LOOP INSTALLATION DETAILS FOR ROADWAY RESURFACING	F.A.U. RTE.	SECTION	COUNTY	TOTAL SHEETS	SHEET NO.	
	PLOT SCALE = 50,0000 ' / IN.	DRAWN -	REVISED -			*	09-00094-00-RS	COOK	17	17	
	PLOT DATE = 1/4/2008	CHECKED - R.K.F.	REVISED -			TS-07		CONTRACT NO. 63322			
		DATE	REVISED -			SCALE: NONE	SHEET NO. 1 OF 1 SHEETS	STA.	TO STA.		FED. ROAD DIST. NO. 1 ILLINOIS FED. AID PROJECT