

FOR INDEX OF SHEETS, SEE SHEET NO. 2

FOR INDEX OF HIGHWAY STANDARDS, SEE SHEET NO. 2

PROJECT LOCATED IN THE CITY OF OAK FOREST

STATE OF ILLINOIS
DEPARTMENT OF TRANSPORTATION
DIVISION OF HIGHWAYS

PLANS FOR PROPOSED
FEDERAL AID HIGHWAY

FAU ROUTE 1020 (LARAMIE AVENUE)
FAP 351 (US ROUTE 6 - 159TH STREET) TO FAU 1021 (155TH STREET)

LAPP RESURFACING
PROJECT No.: ARA-9003(375)
CITY OF OAK FOREST
SECTION No.: 09-00094-00-RS
JOB No: C-91-742-09
COOK COUNTY

F.A.U. RTE.	SECTION	COUNTY	TOTAL SHEETS	SHEET NO.
09-00094-00-RS	09-00094-00-RS	COOK	17	1
STA.	TO STA.			
FED. ROAD DIST. NO	ILLINOIS	FED AID PROJECT		
C-91-742-09		ARA-9003(375)		

*FAU 1020 LARAMIE AVENUE
CONTRACT NO. 63322



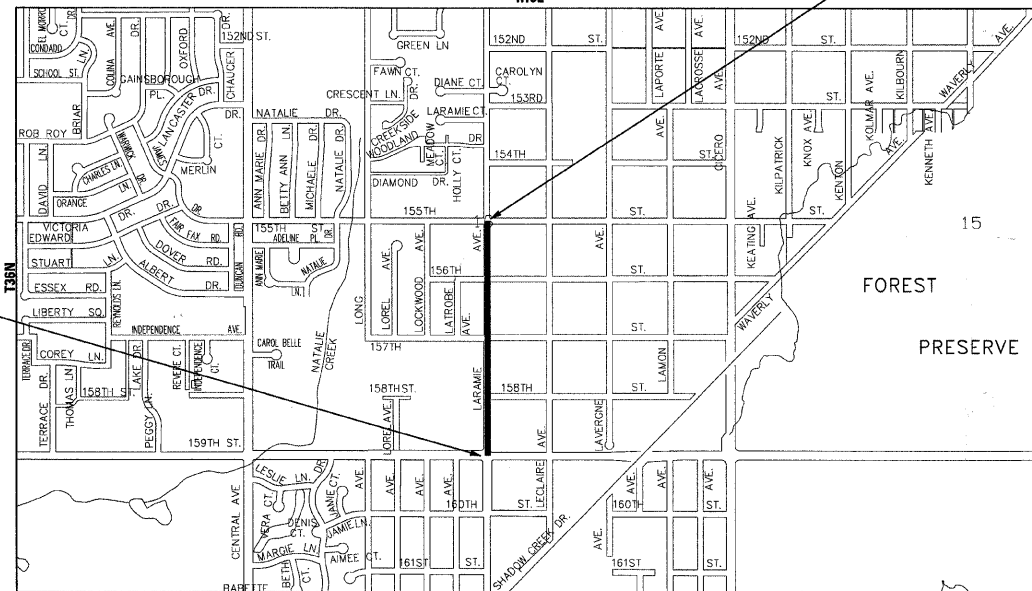
TRAFFIC DATA

LARAMIE AVENUE
POSTED SPEED LIMIT = 20 MPH
DESIGN SPEC LIMIT = 25 MPH
2006 ADT = 2,200 VPD

DESIGN DESIGNATION
COLLECTOR

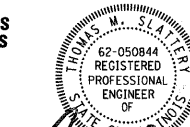
PROJECT NO.: ARA-9003(375)
FAU 1020 LARAMIE AVENUE
PROJECT BEGINS STA 10+82

LOCATION MAP
(NOT TO SCALE)



3RD PRINCIPAL MERIDIAN
LOCATION MAP
(NOT TO SCALE)

BREMEN TOWNSHIP
GROSS LENGTH OF IMPROVEMENT = 2,560 LF OR 0.485 MILES
NET LENGTH OF IMPROVEMENT = 2,560 LF OR 0.485 MILES

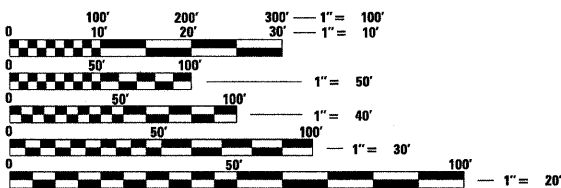


PROJECT MANAGER
"LICENSE EXPIRES 11-30-11"



PROJECT ENGINEER
"LICENSE EXPIRES 11-30-11"

BAXTER & WOODMAN, INC.
STATE OF ILLINOIS - PROFESSIONAL DESIGN FIRM
LICENSE NO. - 184-001121 - EXPIRES 4/30/2011



FULL SIZE PLANS HAVE BEEN PREPARED USING STANDARD
ENGINEERING SCALES. REDUCED SIZED PLANS WILL NOT
CONFORM TO STANDARD SCALES. IN MAKING MEASUREMENTS
ON REDUCED PLANS, THE ABOVE SCALES MAY BE USED.

J.U.L.I.E.
JOINT UTILITY LOCATION INFORMATION FOR EXCAVATION
1-800-892-0123

STATE OF ILLINOIS
DEPARTMENT OF TRANSPORTATION
DIVISION OF HIGHWAYS

APPROVED OCTOBER 8 2009
Samy Soler
DIRECTOR OF PUBLIC WORKS

PASSED OCTOBER 26 2009
Christine A. O'Keefe
DISTRICT 1 ENGINEER OF LOCAL ROADS & STREETS

RELEASING FOR BID
BASED ON LIMITED
REVIEW OCTOBER 26, 2009
Diana M. O'Keefe
DEPUTY DIRECTOR OF
HIGHWAYS, REGION 1 ENGINEER

PRINTED BY THE AUTHORITY
OF THE STATE OF ILLINOIS

CONTRACT NO. 63322

- Burlington, Wisconsin 262.763.7834
 - Crystal Lake, Illinois 815.459.1260
 - DeKalb, Illinois 815.787.3111
 - Itasca, Illinois 630.773.1870
 - Mokena, Illinois 708.560.7070
 - Grayslake, Illinois 847.223.5088
 - Plainfield, Illinois 815.609.7425
 - Madison, Wisconsin 608.347.1542
 - Chicago, Illinois 312.578.0050
- (OFFICE WHICH PREPARED PLANS)

B&W PROJECT NO.: 090312.40 DATE: 10-06-09

COPYRIGHT © 2009 BY BAXTER & WOODMAN, INC.
STATE OF ILLINOIS - PROFESSIONAL DESIGN FIRM
PROJECT NO. - 090312.40
DATE: 10/06/09
FIELD ENGINEER MELCHOR MANGOBA, P.E. (847-705-4408)