

STATE OF ILLINOIS
DEPARTMENT OF TRANSPORTATION
DIVISION OF HIGHWAYS

**PLANS FOR PROPOSED
FEDERAL AID HIGHWAY**

FAU 1598 (139TH STREET)
FAU 3778 (CRAWFORD AVENUE) TO COOPERS GROVE ROAD
LOCAL AGENCY PRESERVATION PROGRAM

SECTION NO.: 09-00024-00-RS

PROJECT NO.: ARA-9003(428)

JOB NO. C-91-857-09

VILLAGE of ROBBINS
COOK COUNTY

F. A. I. D. NO.	SECTION	COUNTY	TOTAL SHEETS	SHEET NO.
1598	09-00024-00-RS	COOK	15	1
STA.		TO STA.		
FED. ROAD DIST. NO.	ILLINOIS	FED. AID PROJECT	ARA-9003(428)	

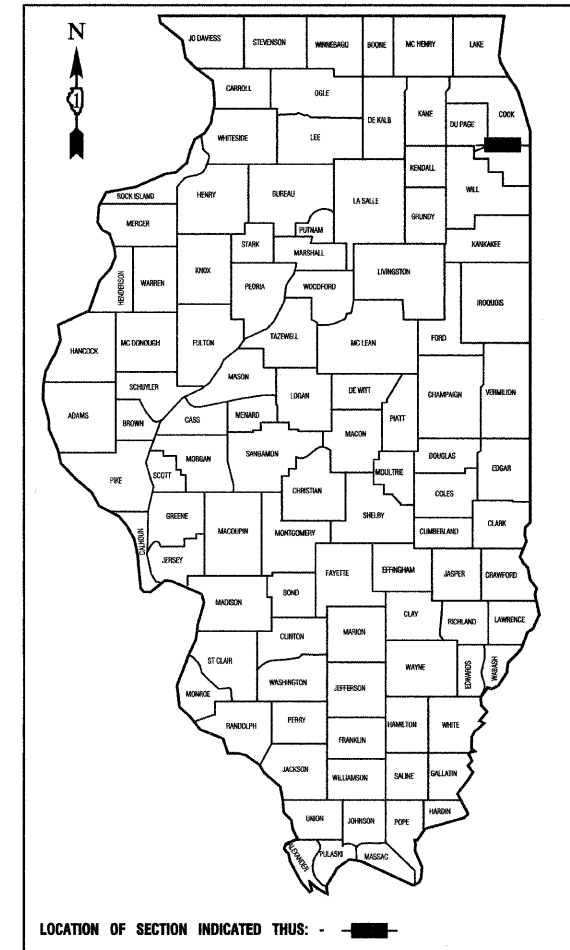
CONTRACT #63304

INDEX OF SHEETS

- COVER SHEET, INDEX OF SHEETS & STATE STANDARDS
- SUMMARY OF QUANTITIES & GENERAL NOTES
- TYPICAL CROSS SECTIONS
- 6. PAVEMENT PLAN
- 9. STRIPING PLAN
- 15. IDOT DISTRICT 1 STANDARD DETAILS

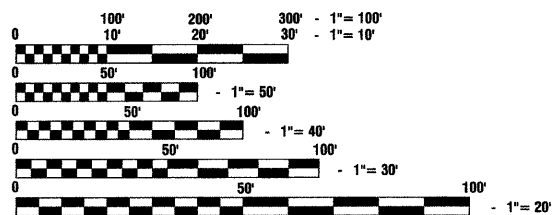
HIGHWAY STANDARDS

- | | |
|-----------|--|
| 000001-05 | STANDARD SYMBOLS, ABBREVIATIONS AND PATTERNS |
| 424001-05 | CURB RAMPS FOR SIDEWALKS |
| 442201-03 | CLASS C AND D PATCHES |
| 602001-01 | CATCH BASIN, TYPE A |
| 606001-04 | CONCRETE CURB TYPE B AND COMBINATION CONCRETE CURB AND GUTTER |
| 701606-06 | URBAN LANE CLOSURE, MULTILANE, 2W WITH MOUNTABLE MEDIAN |
| 701701-06 | URBAN LANE CLOSURE, MULTILANE, INTERSECTION |
| 701801-04 | LANE CLOSURE, MULTILANE 1W OR 2W CROSSWALK OR SIDEWALK CLOSURE |
| 701901-01 | TRAFFIC CONTROL DEVICES |
| 780001-02 | TYPICAL PAVEMENT MARKINGS |
| 781001-03 | TYPICAL APPLICATIONS RAISED REFLECTIVE PAVEMENT MARKERS |
| 886001-01 | DETECTOR LOOP INSTALLATIONS |
| 886006-01 | TYPICAL LAYOUT FOR DETECTION LOOPS |



139TH STREET
ADT=5,700 (2009)
=5,700 (2030)
DESIGN SPEED=40 MPH
SPEED LIMIT=35 MPH

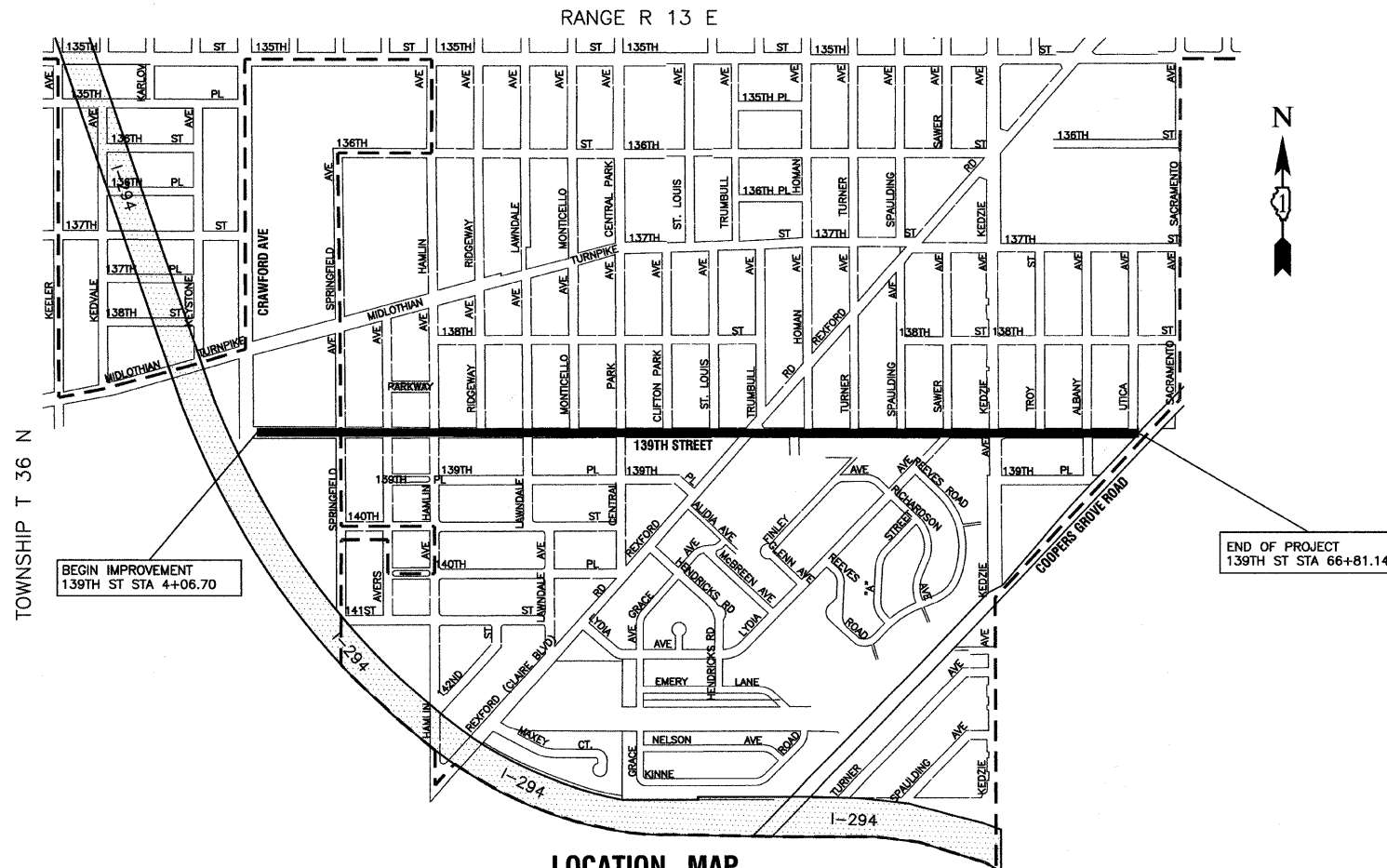
SCALES
PLAN - 1"=50'
PROFILE HORIZ. - 1"=50'
PROFILE VERT. - 1"=5'
CROSS SECTIONS - 1"=10'



FULL SIZE PLANS HAVE BEEN PREPARED USING STANDARD ENGINEERING SCALES, REDUCED SIZED PLANS WILL NOT CONFORM TO STANDARD SCALES, IN MAKING MEASUREMENTS ON REDUCED PLANS, THE ABOVE SCALES MAY BE USED.

J. U. L. I. E.
JOINT UTILITY LOCATION INFORMATION FOR EXCAVATION
1-800-892-0123 or 811

CONTRACT NO. 63304



LOCATION MAP

GROSS LENGTH=6,274.44 FEET=1.19 MILES
NET LENGTH=6,106.43 FEET=1.16 MILES

STATE OF ILLINOIS DEPARTMENT OF TRANSPORTATION
DIVISION OF HIGHWAYS

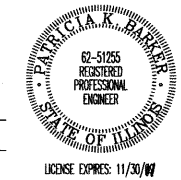
Approved: *James H. Rodie* 10/9/09
President, Village of Robbins

Passed: *Christopher Holt* OCTOBER 27, 2009
District 1 Engineer of Local Roads & Streets

Released for Bid Based on Limited Review: *Diana M. O'Keefe* OCTOBER 29, 2009
Deputy Director of Highways, Region 1 Engineer

PRINTED BY THE AUTHORITY OF
THE STATE OF ILLINOIS

PREPARED BY OR UNDER THE
DIRECT SUPERVISION OF:
John K. Bl...
10/9/09



FIELD ENGINEER: MELCHOR MANGOBA (847)705-4408
CONSULTANTS: ROBINSON ENGINEERING, LTD. 708-331-6700

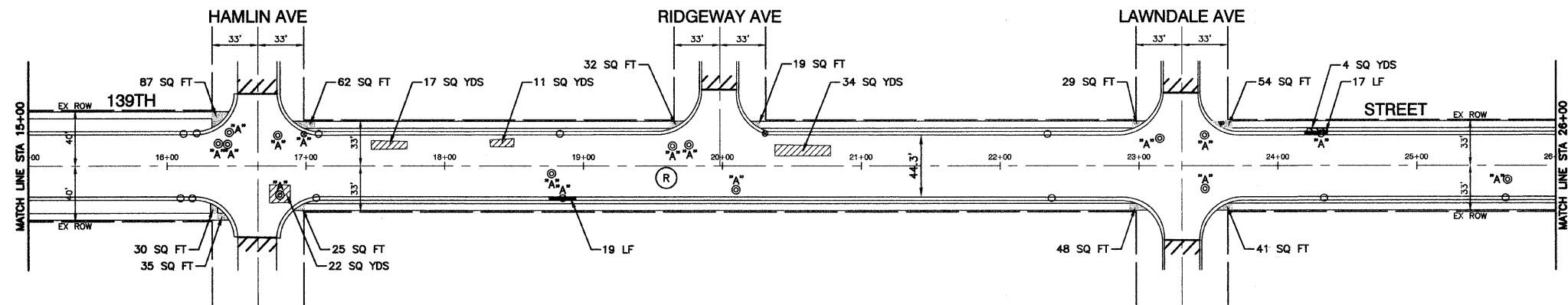
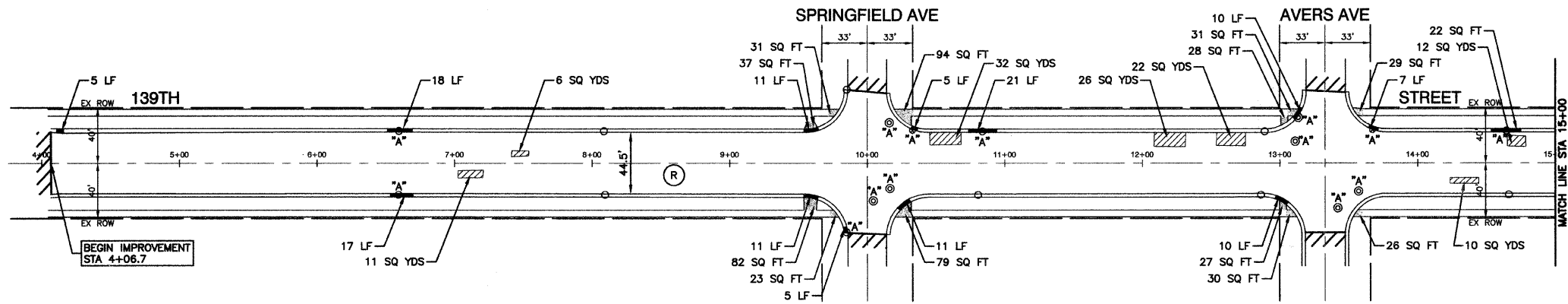
SUMMARY OF QUANTITIES					PAVEMENT	
S.I.	CODE NO.	PAY ITEM	UNIT	QUAN	CONSTRUCTION TYPE CODE	
					1000	
	20101700	SUPPLEMENTAL WATERING	UNIT	1	1	
	25000400	NITROGEN FERTILIZER NUTRIENT	POUND	17	17	
	25000500	PHOSPHORUS FERTILIZER NUTRIENT	POUND	17	17	
	25000600	POTASSIUM FERTILIZER NUTRIENT	POUND	17	17	
	25200110	SODDING, SALT TOLERANT	SQ YD	389	389	
	31101200	SUB-BASE GRANULAR MATERIAL, TYPE B 4"	SQ YD	359	359	
	40300100	BITUMINOUS MATERIALS (PRIME COAT)	GALLON	8204	8204	
	40600300	AGGREGATE (PRIME COAT)	TON	165	165	
	40600982	HOT-MIX ASPHALT SURFACE REMOVAL - BUTT JOINT	SQ YD	1307	1307	
	40603335	HOT-MIX ASPHALT SURFACE COURSE, MIX "D", N50	TON	2813	2813	
	42300300	PORTLAND CEMENT CONCRETE DRIVEWAY PAVEMENT, 7 INCH	SQ YD	41	41	
	42400200	PORTLAND CEMENT CONCRETE SIDEWALK 5 INCH	SQ FT	3098	3098	
	42400800	DETECTABLE WARNINGS	SQ FT	550	550	
	44000158	HOT-MIX ASPHALT SURFACE REMOVAL, 2 1/4"	SQ YD	32815	32815	
	44001700	COMBINATION CONCRETE CURB AND GUTTER REMOVAL AND REPLACEMENT	FOOT	1037	1037	
	44000200	DRIVEWAY PAVEMENT REMOVAL	SQ YD	41	41	
	44000600	SIDEWALK REMOVAL	SQ FT	3070	3070	
	44201749	CLASS D PATCHES, TYPE I, 9 INCH	SQ YD	12	12	
	44201753	CLASS D PATCHES, TYPE II, 9 INCH	SQ YD	185	185	
	44201757	CLASS D PATCHES, TYPE III, 9 INCH	SQ YD	191	191	
	44201759	CLASS D PATCHES, TYPE IV, 9 INCH	SQ YD	550	550	
	60250200	CATCH BASINS TO BE ADJUSTED	EACH	36	36	
	60255500	MANHOLES TO BE ADJUSTED	EACH	68	68	
	60266600	VALVE BOXES TO BE ADJUSTED	EACH	7	7	
	67100100	MOBILIZATION	L SUM	1	1	
	70102625	TRAFFIC CONTROL AND PROTECTION, STANDARD 701606	L SUM	1	1	
	70102635	TRAFFIC CONTROL AND PROTECTION, STANDARD 701701	L SUM	1	1	
	70102640	TRAFFIC CONTROL AND PROTECTION, STANDARD 701801	L SUM	1	1	
	70300100	SHORT-TERM PAVEMENT MARKING	FOOT	5000	5000	
*	78000100	THERMOPLASTIC PAVEMENT MARKING - LETTERS AND SYMBOLS	SQ FT	264	264	
*	78000200	THERMOPLASTIC PAVEMENT MARKING - LINE 4"	FOOT	8828	8828	
*	78000400	THERMOPLASTIC PAVEMENT MARKING - LINE 6"	FOOT	3282	3282	
*	78000600	THERMOPLASTIC PAVEMENT MARKING - LINE 12"	FOOT	407	407	
*	78000650	THERMOPLASTIC PAVEMENT MARKING - LINE 24"	FOOT	461	461	
	X4067107	POLYMERIZED LEVELING BINDER (MACHINE METHOD), IL-4.75, N50	TON	1875	1875	
	Z0048665	RAILROAD PROTECTIVE LIABILITY INSURANCE	L SUM	1	1	

GENERAL NOTES

- BEFORE STARTING ANY EXCAVATION THE CONTRACTOR SHALL CALL "J.U.L.I.E." AT (800) 892-0123 AND (312) 744-7000 FOR FIELD LOCATIONS OF BURIED ELECTRIC, TELEPHONE AND GAS UTILITIES. (48 HOUR NOTIFICATION REQUIRED)
- UTILITIES INDICATED ON THE PLANS ARE PROVIDED FOR THE CONTRACTORS USE AND ARE BASED UPON INFORMATION AVAILABLE AT THE TIME OF THE ADVERTISEMENT FOR BIDS. THE OWNER AND ENGINEER DO NOT GUARANTEE THE ACCURACY OF UTILITY INFORMATION.
- IT SHALL BE THE CONTRACTOR'S RESPONSIBILITY TO VERIFY ALL DIMENSIONS AND CONDITIONS EXISTING IN THE FIELD PRIOR TO CONSTRUCTION AND ORDERING OF MATERIALS.
- SCHEDULES INCLUDED IN THE PLANS HAVE BEEN PREPARED FROM FIELD NOTES. EXACT LOCATIONS FOR PATCHING SHALL BE DETERMINED IN THE FIELD BY THE ENGINEER.
- ANY REFERENCE TO STANDARDS THROUGHOUT THE PLANS OR SPECIAL PROVISIONS SHALL BE INTERPRETED TO BE THE LATEST STANDARDS OF THE ILLINOIS DEPARTMENT OF TRANSPORTATION.
- THE THICKNESS OF HMA MIXTURE STATED IN THE SPECIFICATIONS IS THE NOMINAL THICKNESS. DEVIATIONS FROM THE NOMINAL THICKNESS WILL BE PERMITTED WHEN SUCH DEVIATIONS OCCUR DUE TO IRREGULARITIES IN THE EXISTING SURFACE OR BASE ON WHICH THE HMA SURFACE IS PLACED.
- ACCESS TO DRIVEWAYS SHALL BE MAINTAINED AT ALL TIMES BY LIMITING CURB AND GUTTER REPAIR TO ONE-HALF THE DRIVEWAY WIDTH AT ONE TIME AS WELL AS TEMPORARY AGGREGATE.

* - INDICATES SPECIALTY ITEMS

FILE NAME = 06328-QUAN-01 - P01	USER NAME =	DESIGNED -- PKB	REVISED --	STATE OF ILLINOIS DEPARTMENT OF TRANSPORTATION	139TH STREET RESURFACING CRAWFORD AVENUE TO COOPERS GROVE ROAD SUMMARY OF QUANTITIES AND GENERAL NOTES	F.A.U. RTE.	SECTION	COUNTY	TOTAL SHEETS	SHEET NO.	
		CHECKED -- PKB	REVISED --			1598	09-0024-00-RS	COOK	15	2	
	PLOT SCALE =	DRAWN -- PS	REVISED --			SCALE: NONE SHEET NO. 2 OF 15 SHEETS STA. TO STA.					
	PLOT DATE = 09-18-09	CHECKED -- AG	REVISED --			FED. ROAD DIST. NO. 1 ILLINOIS FED. AID PROJECT ARA-9003(428) CONTRACT NO. 63304					



NOTES:
 1. DETECTABLE WARNINGS ARE TO BE INSTALLED AT LOCATIONS OF SIDEWALK REMOVAL AND REPLACEMENT. CONTRACTOR TO POSITION AND PLACE DETECTABLE WARNINGS AT THE DIRECTION OF THE ENGINEER.

- LEGEND**
- BITUMINOUS PAVEMENT REPAIR
 - HOT-MIX ASPHALT SURFACE REMOVAL - BUTT JOINT (10' UNLESS OTHERWISE INDICATED)
 - CONCRETE SIDEWALK REMOVAL AND REPLACEMENT
 - CONCRETE CURB, CONCRETE CURB AND GUTTER REMOVAL AND REPLACEMENT
 - HOT-MIX ASPHALT SURFACE REMOVAL, 2" LEVELING BINDER (MACHINE METHOD), N50 3/4" HOT-MIX ASPHALT SURFACE COURSE, MIX "D", N50 1 1/2"
 - STRUCTURE TO BE ADJUSTED
 - STRUCTURE TO BE RECONSTRUCTED

FILE NAME = 09326-PLAN-01 - P01

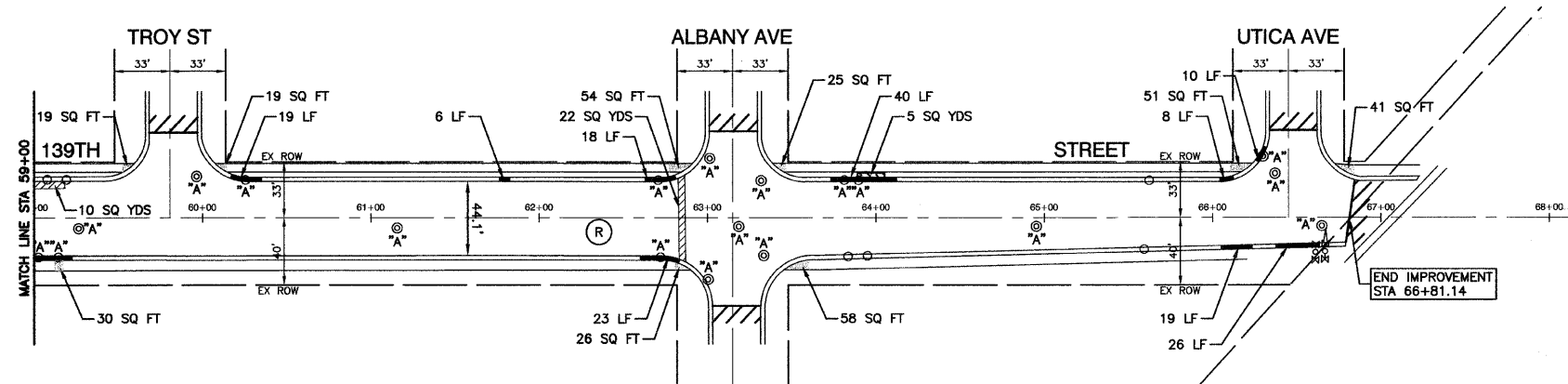
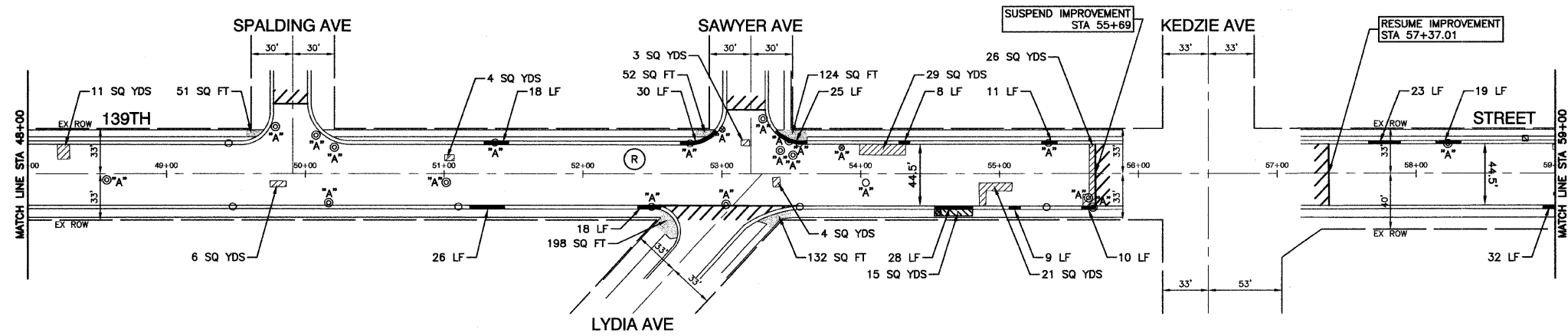
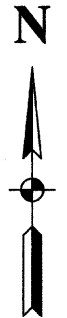
USER NAME =	DESIGNED — PKB	REVISED —
	CHECKED — PKB	REVISED —
PLOT SCALE = 1"=50'	DRAWN — AG/PS	REVISED —
PLOT DATE = 09-18-09	CHECKED — AG	REVISED —

STATE OF ILLINOIS
 DEPARTMENT OF TRANSPORTATION

139TH STREET RESURFACING
 CRAWFORD AVENUE TO COOPERS GROVE ROAD
 PAVEMENT PLAN
 SCALE: 1"=50' SHEET NO. 4 OF 15 SHEETS STA. 4+06.70 TO STA. 26+00

F.A.U. RTE.	SECTION	COUNTY	TOTAL SHEETS	SHEET NO.
1598	09-00024-00-RS	COOK	15	4
FED. ROAD DIST. NO. 1 ILLINOIS			FED. AID PROJECT ARA-9003(428)	
CONTRACT NO. 63304				

SECTION 2, TOWNSHIP 36, RANGE 13
SECTION 1, TOWNSHIP 36, RANGE 13



NOTES:
1. DETECTABLE WARNINGS ARE TO BE INSTALLED AT LOCATIONS OF SIDEWALK REMOVAL AND REPLACEMENT. CONTRACTOR TO POSITION AND PLACE DETECTABLE WARNINGS AT THE DIRECTION OF THE ENGINEER.

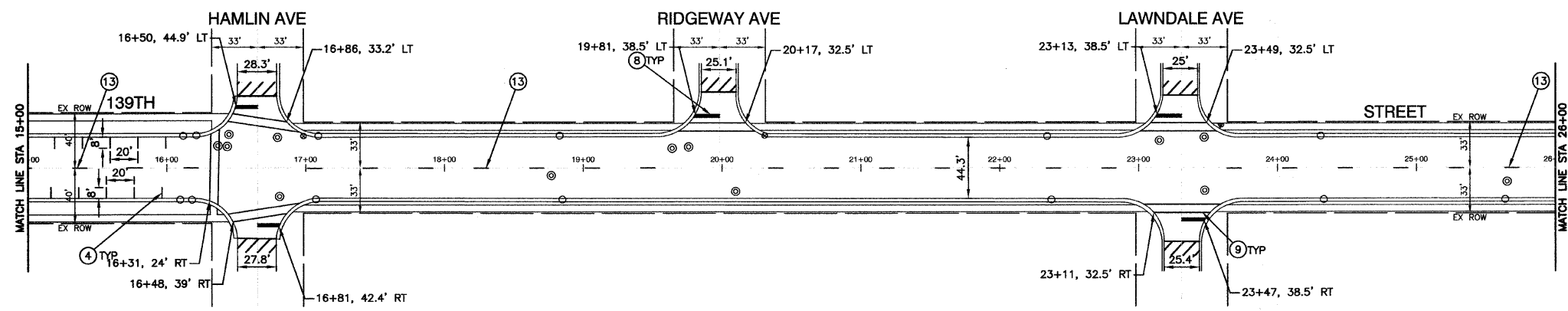
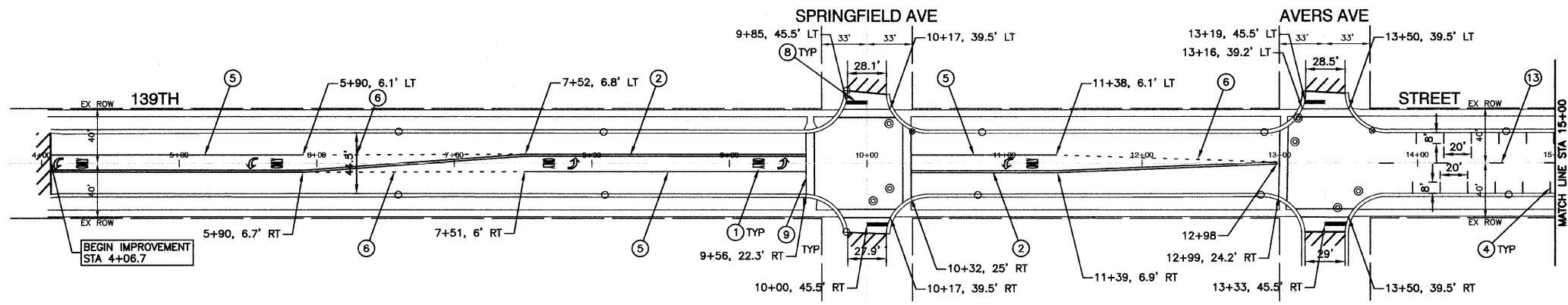
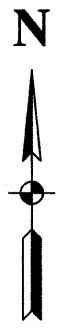
- LEGEND**
- BITUMINOUS PAVEMENT REPAIR
 - HOT-MIX ASPHALT SURFACE REMOVAL - BUTT JOINT (10' UNLESS OTHERWISE INDICATED)
 - CONCRETE SIDEWALK REMOVAL AND REPLACEMENT
 - CONCRETE CURB, CONCRETE CURB AND GUTTER REMOVAL AND REPLACEMENT
 - HOT-MIX ASPHALT SURFACE REMOVAL, 2" LEVELING BINDER (MACHINE METHOD), N50 3/4" HOT-MIX ASPHALT SURFACE COURSE, MIX "D", N50 1 1/2"
 - STRUCTURE TO BE ADJUSTED
 - STRUCTURE TO BE RECONSTRUCTED

FILE NAME = 09326-PLAN-01 - P03	USER NAME =	DESIGNED - PKB	REVISED -
		CHECKED - PKB	REVISED -
	PLOT SCALE = 1"=50'	DRAWN - AG/PS	REVISED -
	PLOT DATE = 09-18-09	CHECKED - AG	REVISED -

STATE OF ILLINOIS
DEPARTMENT OF TRANSPORTATION

139TH STREET RESURFACING CRAWFORD AVENUE TO COOPERS GROVE ROAD PAVEMENT PLAN			
SCALE: 1"=50'	SHEET NO. 6	OF 15 SHEETS	STA. 48+00 TO STA. 66+77.85

F.A.U. RTE. 1598	SECTION 09-00024-00-RS	COUNTY COOK	TOTAL SHEETS 15	SHEET NO. 6
FED. ROAD DIST. NO. 1 ILLINOIS			CONTRACT NO. 63304	
FED. AID PROJECT ARA-9003(428)				



PAVEMENT MARKING LEGEND

- ① WHITE LETTERS & SYMBOLS
- ② DOUBLE 4" YELLOW CENTERLINE (11" C/C)
- ③ DOUBLE 4" YELLOW MEDIAN OUTLINE (11" C/C)
- ④ 4" YELLOW LINE
- ⑤ 4" WHITE EDGE LINE
- ⑥ 6" WHITE LANE LINE
- ⑦ 6" WHITE SKIP-DASH LINE (2' LINE - 6' SPACE)
- ⑧ 12" YELLOW DIAGONAL LINE (20' C/C)
- ⑨ 24" WHITE STOP BAR
- ⑩ 6" WHITE CROSSWALK (6' C/C)
- ⑪ 6" WHITE CROSSWALK (10' C/C)
- ⑫ 12" WHITE LINE (45° ANGLE, 20' C/C)
- ⑬ 4" WHITE SKIP - DASH LINE (10' LINE - 30' SPACE)
- ⑭ 4" YELLOW SKIP - DASH LINE (10' LINE - 30' SPACE)
- ▲ ONE-WAY AMBER MARKER
40' C/C UNLESS OTHERWISE INDICATED
- ◆ ONE-WAY CRYSTAL MARKER
80' C/C UNLESS OTHERWISE INDICATED
- ◆ TWO-WAY AMBER MARKER
40' C/C UNLESS OTHERWISE INDICATED
- TRAFFIC SIGN

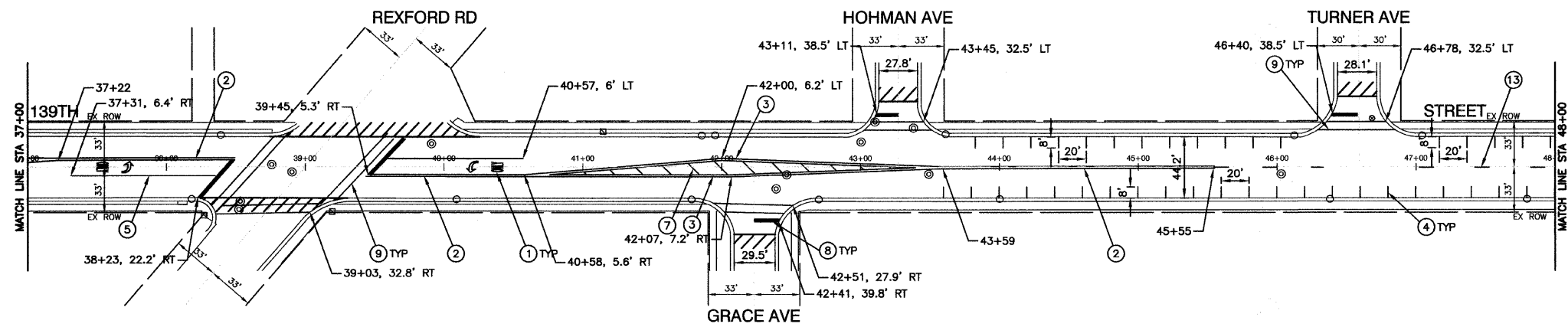
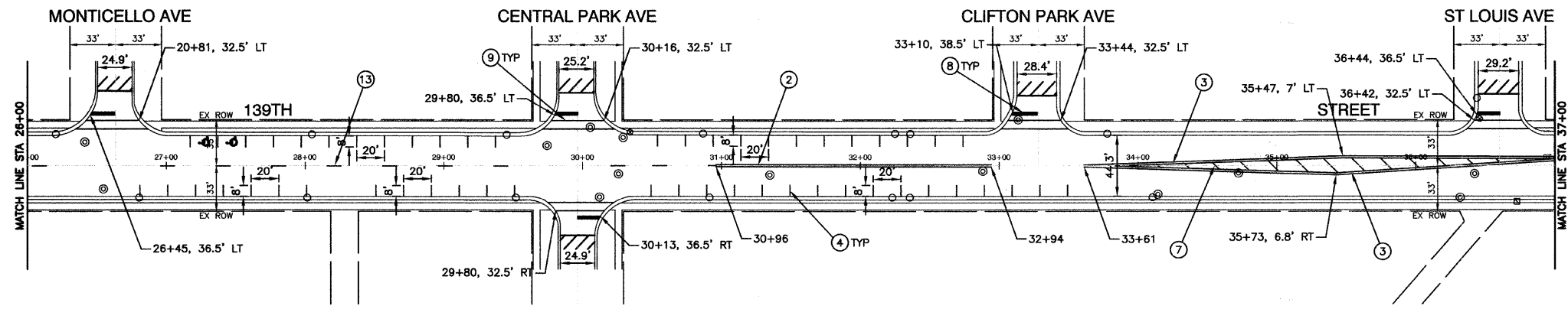
FILE NAME = 09226-PLAN-01 - PVMK01	USER NAME =	DESIGNED - PKB	REVISED -
		CHECKED - PKB	REVISED -
	PLOT SCALE = 1"=50'	DRAWN - AG/PS	REVISED -
	PLOT DATE = 09-18-09	CHECKED - AG	REVISED -

**STATE OF ILLINOIS
DEPARTMENT OF TRANSPORTATION**

**139TH STREET RESURFACING
CRAWFORD AVENUE TO COOPERS GROVE ROAD
STRIPING PLAN**

SCALE: 1"=50' SHEET NO. 7 OF 15 SHEETS STA. 4+06.70 TO STA. 26+00

F.A.U. RTE. 1598	SECTION 09-00024-00-RS	COUNTY COOK	TOTAL SHEETS 15	SHEET NO. 7
FED. ROAD DIST. NO. 1 ILLINOIS		FED. AID PROJECT ARA-9003(428)		
CONTRACT NO. 63304				



PAVEMENT MARKING LEGEND

- ① WHITE LETTERS & SYMBOLS
- ② DOUBLE 4" YELLOW CENTERLINE (11" C/C)
- ③ DOUBLE 4" YELLOW MEDIAN OUTLINE (11" C/C)
- ④ 4" YELLOW LINE
- ⑤ 4" WHITE EDGE LINE
- ⑥ 6" WHITE LANE LINE
- ⑦ 6" WHITE SKIP-DASH LINE (2' LINE - 6' SPACE)
- ⑧ 12" YELLOW DIAGONAL LINE (20' C/C)
- ⑨ 24" WHITE STOP BAR
- ⑩ 6" WHITE CROSSWALK (6' C/C)
- ⑪ 6" WHITE CROSSWALK (10' C/C)
- ⑫ 12" WHITE LINE (45° ANGLE, 20' C/C)
- ⑬ 4" WHITE SKIP - DASH LINE (10' LINE - 30' SPACE)
- ⑭ 4" YELLOW SKIP - DASH LINE (10' LINE - 30' SPACE)
- ◀ ONE-WAY AMBER MARKER
40' C/C UNLESS OTHERWISE INDICATED
- ◀ ONE-WAY CRYSTAL MARKER
80' C/C UNLESS OTHERWISE INDICATED
- ◆ TWO-WAY AMBER MARKER
40' C/C UNLESS OTHERWISE INDICATED
- ◻ TRAFFIC SIGN

FILE NAME = 09326-PLAN-01 - PVMK02
 USER NAME =
 PLOT SCALE = 1"=50'
 PLOT DATE = 09-18-09

DESIGNED -- PKB	REVISOR --
CHECKED -- PKB	REVISOR --
DRAWN -- AG/PS	REVISOR --
CHECKED -- AG	REVISOR --

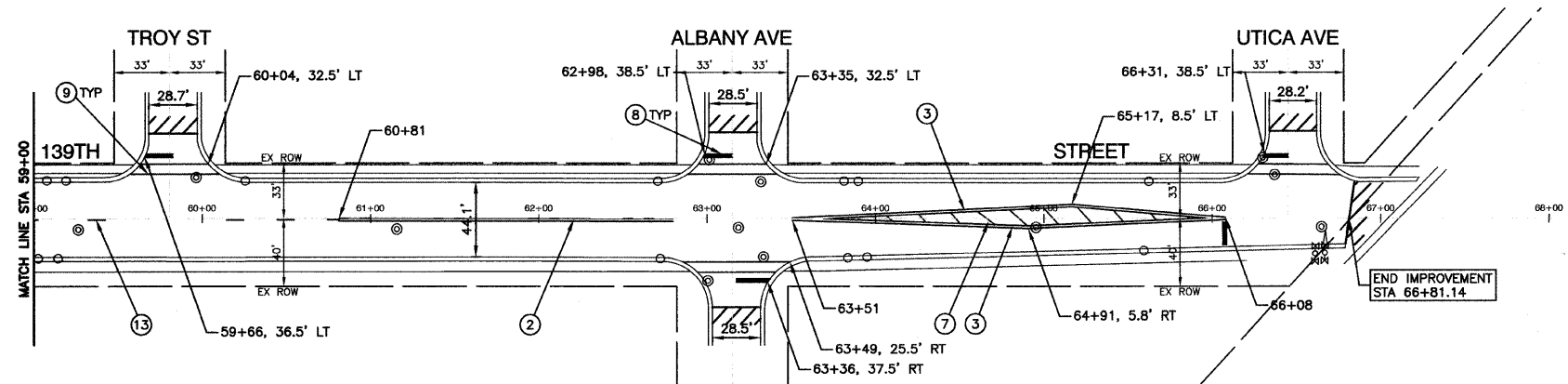
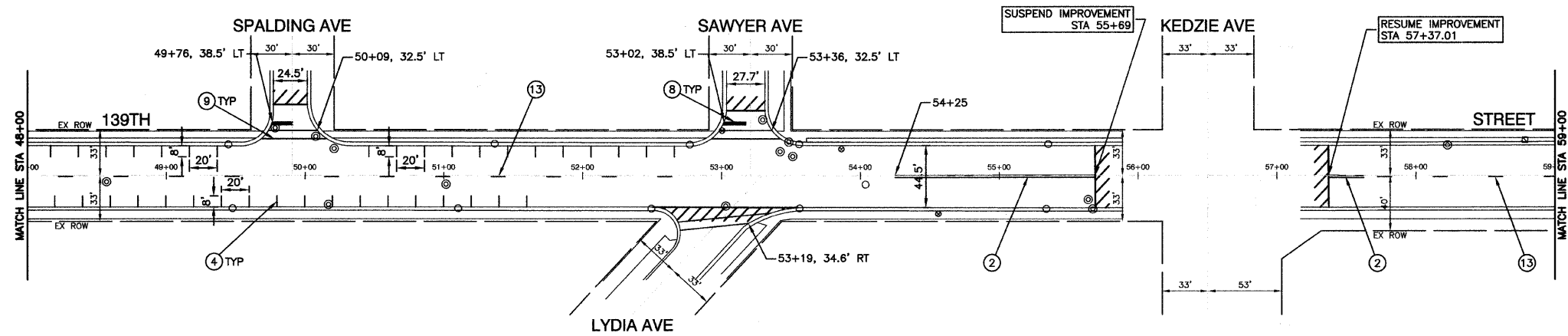
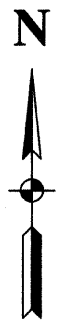
**STATE OF ILLINOIS
 DEPARTMENT OF TRANSPORTATION**

**139TH STREET RESURFACING
 CRAWFORD AVENUE TO COOPERS GROVE ROAD
 STRIPING PLAN**

SCALE: 1"=50' SHEET NO. 8 OF 15 SHEETS STA. 26+00 TO STA. 48+00

F.A.U. RTE. 1598	SECTION 09-00024-00-RS	COUNTY COOK	TOTAL SHEETS 15	SHEET NO. 8
FED. ROAD DIST. NO. 1 ILLINOIS			FED. AID PROJECT ARA-9003(428)	
CONTRACT NO. 63304				

SECTION 2, TOWNSHIP 36, RANGE 13
SECTION 1, TOWNSHIP 36, RANGE 13



PAVEMENT MARKING LEGEND

- ① WHITE LETTERS & SYMBOLS
- ② DOUBLE 4" YELLOW CENTERLINE (11" C/C)
- ③ DOUBLE 4" YELLOW MEDIAN OUTLINE (11" C/C)
- ④ 4" YELLOW LINE
- ⑤ 4" WHITE EDGE LINE
- ⑥ 6" WHITE LANE LINE
- ⑦ 6" WHITE SKIP-DASH LINE (2' LINE - 6' SPACE)
- ⑧ 12" YELLOW DIAGONAL LINE (20' C/C)
- ⑨ 24" WHITE STOP BAR
- ⑩ 6" WHITE CROSSWALK (6' C/C)
- ⑪ 6" WHITE CROSSWALK (10' C/C)
- ⑫ 12" WHITE LINE (45° ANGLE, 20' C/C)
- ⑬ 4" WHITE SKIP - DASH LINE (10' LINE - 30' SPACE)
- ⑭ 4" YELLOW SKIP - DASH LINE (10' LINE - 30' SPACE)
- ◀ ONE-WAY AMBER MARKER
40' C/C UNLESS OTHERWISE INDICATED
- ◀ ONE-WAY CRYSTAL MARKER
80' C/C UNLESS OTHERWISE INDICATED
- ◆ TWO-WAY AMBER MARKER
40' C/C UNLESS OTHERWISE INDICATED
- ◻ TRAFFIC SIGN

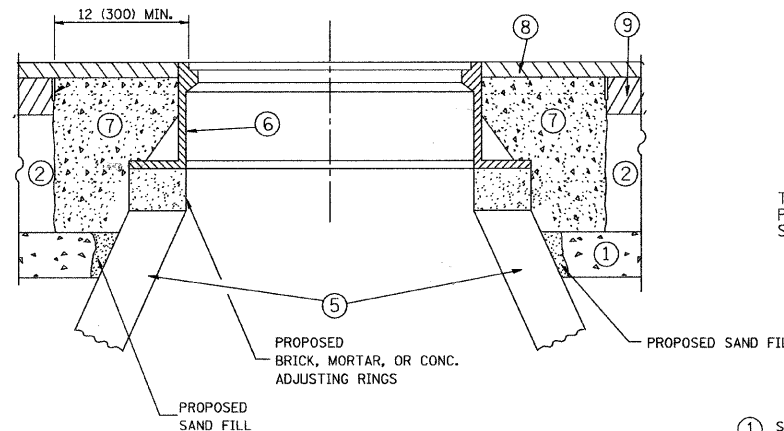
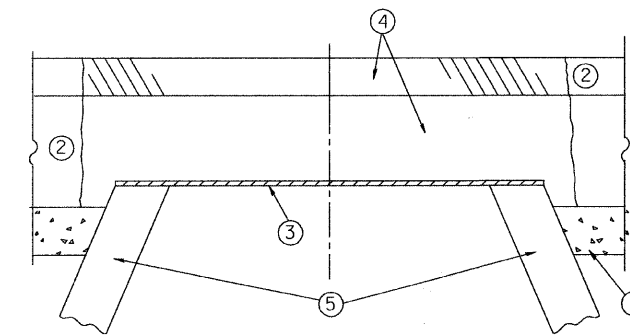
FILE NAME = 09209-PLAN-01 - PVM003
USER NAME =
DESIGNED -- PKB
CHECKED -- PKB
DRAWN -- AG/PS
PLOT DATE = 09-18-09

REVISOR --
REVISOR --
REVISOR --
REVISOR --

STATE OF ILLINOIS
DEPARTMENT OF TRANSPORTATION

139TH STREET RESURFACING
CRAWFORD AVENUE TO COOPERS GROVE ROAD
STRIPING PLAN
SCALE: 1"=50'
SHEET NO. 9 OF 15 SHEETS
STA. 48+00 TO STA. 66+77.85

F.A.U. RTE.	SECTION	COUNTY	TOTAL SHEETS	SHEET NO.
1598	09-00024-00-RS	COOK	15	9
CONTRACT NO. 63304				
FED. ROAD DIST. NO. 1 ILLINOIS FED. AID PROJECT ARA-0003(428)				



CONSTRUCTION PROCEDURES

STAGE 1 (BEFORE PAVEMENT MILLING)

- A) REMOVE A MINIMUM OF 12 (300) OF THE PAVEMENT FROM AROUND THE STRUCTURE.
- B) REMOVE THE EXISTING FRAME AND LID FROM THE STRUCTURE.
- C) COVER THE STRUCTURE OPENING WITH A 36 (900) DIAMETER METAL PLATE.
- D) BACKFILL WITH CRUSHED STONE AND A MINIMUM 1 1/2 (40) THICK HMA SURFACE MIX APPROVED BY THE ENGINEER.

STAGE 2 (AFTER PAVEMENT MILLING)

- A) REMOVE THE HMA SURFACE MIX AND CRUSHED STONE.
- B) INSTALL THE FRAME AND LID; ADJUST THE FRAME TO ITS FINAL SURFACE ELEVATION.
- C) THE SURROUNDING SPACE SHALL BE FILLED WITH CLASS SI CONCRETE, OR HMA SURFACE COURSE OR HMA BINDER COURSE TO THE ELEVATION OF THE SURFACE OF THE EXISTING BASE COURSE OR THE BINDER COURSE.

THE PROCEDURE EXPLAINED ABOVE SHALL CONFORM TO THE APPLICABLE PORTIONS OF SECTIONS 353, 406, 602, AND 603 OF THE STANDARD SPECIFICATIONS.

LEGEND

- ① SUB-BASE GRANULAR MATERIAL
- ② EXISTING PAVEMENT
- ③ 36 (900) DIAMETER METAL PLATE
- ④ PROPOSED CRUSHED STONE AND HMA SURFACE MIX
- ⑤ EXISTING STRUCTURE
- ⑥ FRAME AND LID (SEE NOTES)
- ⑦ CLASS SI CONCRETE, HMA SURFACE COURSE OR HMA BINDER COURSE
- ⑧ PROPOSED HMA SURFACE COURSE
- ⑨ PROPOSED HMA BINDER COURSE

LOCATION OF STRUCTURES:

THE CONTRACTOR WILL BE REQUIRED TO KEEP A RECORD OF THE LOCATIONS OF THE BURIED STRUCTURES ACCORDING TO THE STATION AND DISTANCE LEFT OR RIGHT OF THE CENTERLINE OF PAVEMENT. UPON COMPLETION OF THE WORK, THE CONTRACTOR WILL DELIVER THE RECORD TO THE ENGINEER.

NOTES:

EXISTING BROKEN FRAMES AND LIDS SHALL BE REMOVED AND DISPOSED OF BY THE CONTRACTOR AND SHALL BE REPLACED AS DIRECTED BY THE ENGINEER. REPLACEMENT FRAMES AND LIDS WILL BE PAID FOR IN ACCORDANCE WITH ARTICLE 109.04 OF THE STANDARD SPECIFICATIONS UNLESS A SEPARATE PAY ITEM HAS BEEN PROVIDED.

IF THE EXISTING LIDS ARE OPEN, THE FRAME WILL BE ADJUSTED TO THE ELEVATION OF THE MILLED PAVEMENT SURFACE PRIOR TO THE MILLING OPERATION. THE FRAME WILL NOT BE REMOVED AND COVERED BY THE METAL PLATE.

CITY OF CHICAGO CASTINGS ARE THE PROPERTY OF THE CITY AND THE CONTRACTOR SHALL NOTIFY THE CITY FOR REMOVAL AND DISPOSITION OF THE CASTINGS.

THE METAL PLATE USED TO COVER THE STRUCTURE SHALL REMAIN THE PROPERTY OF THE CONTRACTOR.

WHEN STRUCTURES ARE TO BE ADJUSTED OR RECONSTRUCTED, THE LOWERING AND RAISING OF THE FRAMES AND LIDS WILL NOT BE PAID FOR SEPARATELY BUT WILL BE INCLUDED IN THE COST OF THE CORRESPONDING PAY ITEM.

DETAILS FOR FRAMES AND LIDS ADJUSTMENT WITH MILLING

ALL DIMENSIONS ARE IN INCHES (MILLIMETERS) UNLESS OTHERWISE SHOWN

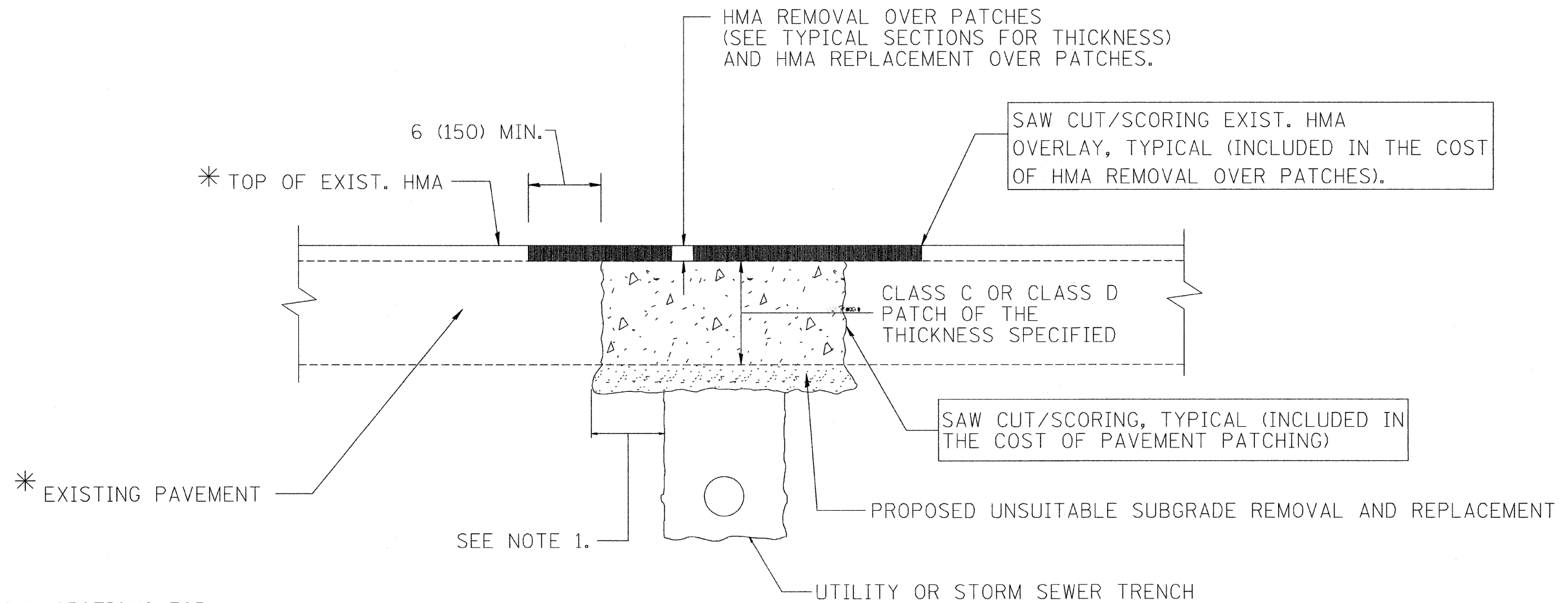
FILE NAME = 09326-DTIS-05 - BD-08	USER NAME = geglienobt	DESIGNED -- R. SHAH	REVISED --R. SHAH 03-10-95
		CHECKED --	REVISED -- A. ABBAS 03-21-97
	PLOT SCALE = 50.0000' / IN.	DRAWN --	REVISED --R. WIEDEMAN 05-14-04
	PLOT DATE = 1/4/2008	CHECKED -- 10-25-94	REVISED -- R. BORO 01-01-07

STATE OF ILLINOIS
DEPARTMENT OF TRANSPORTATION

DETAILS FOR
FRAMES AND LIDS ADJUSTMENT WITH MILLING

SCALE: SHEET NO. 10 OF 15 SHEETS STA. TO STA.

F.A.U. RTE.	SECTION	COUNTY	TOTAL SHEETS	SHEET NO.
1598	09-00024-00-RS	COOK	15	10
BD000-03 (BD-8)		CONTRACT NO. 63304		
FED. ROAD DIST. NO. 1		ILLINOIS FED. AID PROJECT ARA-9003(428)		



NOTES:

1. THE WIDTH OF THE FULL DEPTH PATCH OVER A TRENCH SHALL BE 12 (300) WIDER ON EACH SIDE OF THE TRENCH.

SEQUENCE OF CONSTRUCTION

1. REMOVE THE EXISTING HMA MATERIAL OVER THE AREA TO BE PATCHED.
2. REMOVE AND REPLACE FULL DEPTH PATCHES
3. REPLACE HMA MATERIAL OVER THE AREA TO BE PATCHED.

ALL DIMENSIONS ARE IN INCHES (MILLIMETERS) UNLESS OTHERWISE SHOWN.

FILE NAME = 06326-DTIS-06 - BD-22	USER NAME = geglienobt	DESIGNED — R. SHAH	REVISED — A. ABBAS 01-20-98
		CHECKED —	REVISED — A. ABBAS 04-27-98
	PLOT SCALE = 50.0000 / IN.	DRAWN —	REVISED — R. BORO 01-01-07
	PLOT DATE = 1/4/2008	CHECKED — 10-25-94	REVISED — R. BORO 09-04-07

STATE OF ILLINOIS
DEPARTMENT OF TRANSPORTATION

PAVEMENT PATCHING FOR
HMA SURFACED PAVEMENT

SCALE: SHEET NO. 11 OF 15 SHEETS STA. TO STA.

F.A.U. RTE.	SECTION	COUNTY	TOTAL SHEETS	SHEET NO.
1598	09-00024-00-RS	COOK	15	11
BD400-04 (BD-22)			CONTRACT NO. 63304	
FED. ROAD DIST. NO. 1 ILLINOIS FED. AID PROJECT ARA-9003(428)				

VARIABLE - TO MEET EXISTING DIMENSIONS AND FIELD CONDITIONS (SEE NOTE ②)

PROP. CONC. CURB OR CURB AND GUTTER REPLACEMENT IN ACCORDANCE WITH STATE STANDARD 606001. (SEE NOTE ②)

SAW CUT FULL DEPTH - INCLUDED IN THE COST OF SIDEWALK, DRIVEWAY OR MEDIAN SURFACE REMOVAL PAY ITEM.

SEE STATE STANDARD 606001
EXISTING OR PROPOSED HMA SURFACE (IF APPLICABLE)

18" (450) MAX.

1/4" (5) **

EXISTING SIDEWALK, DRIVEWAY, MEDIAN SURFACE OR GROUND.

PROPOSED SIDEWALK, DRIVEWAY PAVEMENT, MEDIAN SURFACE OR SALT TOLERANT SOD AND TOP SOIL, 4" (100) SOD RESTORATION (SEE NOTE ①).

EXISTING CONCRETE PAVEMENT, CONCRETE BASE COURSE OR FLEXIBLE PAVEMENT

SUITABLE BACKFILL MATERIAL (INCLUDED IN THE COST OF CURB OR CURB AND GUTTER REMOVAL AND REPLACEMENT)

3" (75) MIN.

PROPOSED 3/4" (20) PREFORMED EXPANSION JOINT AT CONCRETE SIDEWALKS, DRIVEWAYS, AND MEDIANS. (INCLUDED IN THE COST OF CURB OR CURB AND GUTTER REMOVAL AND REPLACEMENT.)

- * 3" (75) MINIMUM FROM TOP AND BOTTOM OF THE CONCRETE PAVEMENT OR BASE COURSE.
- ** IF THE FINAL SURFACE OF THE PAVEMENT IS CONCRETE, THE GUTTER IS TO BE FLUSH WITH THE PAVEMENT.

UNSUITABLE SUB-BASE MATERIAL TO BE REMOVED, IF DIRECTED BY THE ENGINEER, SHALL BE REPLACED WITH EITHER SUB-BASE GRANULAR MATERIAL, TYPE B OR ADDITIONAL THICKNESS OF CONCRETE.

NOTE: ① SIDEWALK, DRIVEWAY PAVEMENT OR MEDIAN SURFACE SHALL BE SIMILAR TO THE MATERIAL BEING REMOVED AND WILL BE PAID FOR SEPARATELY.

SALT TOLERANT SOD AND TOP SOIL, 4" (100) RESTORATION WILL NOT BE PAID FOR SEPARATELY, BUT SHALL BE INCLUDED IN THE COST OF CURB OR CURB AND GUTTER REMOVAL AND REPLACEMENT.

REMOVAL AND REPLACEMENT 4" (100) OR LESS IS INCLUDED IN THE COST OF CURB OR CURB AND GUTTER REMOVAL AND REPLACEMENT.

② CURB OR CURB AND GUTTER REPLACEMENT SHALL MATCH THE SHAPE OF THE EXISTING CURB OR CURB AND GUTTER UNLESS OTHERWISE SPECIFIED.

REMOVAL AND REPLACEMENT IN EXCESS OF 4" (100) WILL BE PAID FOR IN ACCORDANCE WITH ARTICLE 109.04 OF THE STANDARD SPECIFICATIONS.

③ FOR CURB OR CURB AND GUTTER REMOVAL AND REPLACEMENT ADJACENT TO FLEXIBLE PAVEMENT DELETE EPOXY COATED TIE BARS.

④ LONGITUDINAL BARS, IF ENCOUNTERED IN THE EXISTING CURB OR CURB AND GUTTER, ARE NOT TO BE REPLACED. CUTTING AND REMOVING LONGITUDINAL BARS SHALL BE INCLUDED IN THE COST OF CURB OR CURB AND GUTTER REMOVAL AND REPLACEMENT.

PROPOSED #6 (20) EPOXY COATED TIE BARS 24" (600) LONG AT 24" (600) CENTERS WILL NOT BE PAID FOR SEPARATELY. DELETE EPOXY COATED TIE BARS IF EXISTING TIE BARS ARE USABLE AS DETERMINED BY THE ENGINEER. (SEE NOTE ③).

⑤ THE COST OF HMA SURFACE REMOVAL IN THE EXISTING GUTTER FLAG SHALL BE INCLUDED IN THE COST OF THE CURB AND GUTTER REMOVAL AND REPLACEMENT.

BASIS OF PAYMENT:
THIS WORK WILL BE PAID FOR AT THE CONTRACT UNIT PRICE PER FOOT (METER) FOR "CURB REMOVAL AND REPLACEMENT" OR "COMBINATION CONCRETE CURB AND GUTTER REMOVAL AND REPLACEMENT".

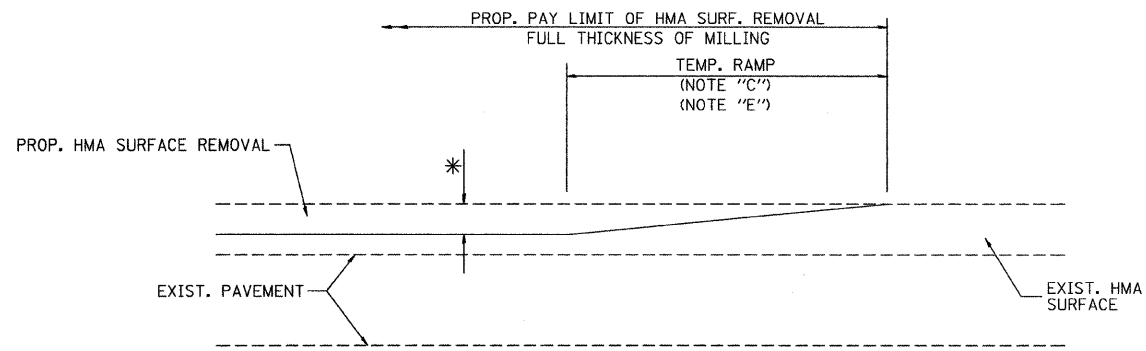
⑥ THE REMOVAL AND REPLACEMENT OF THE EXISTING CURB OR CURB AND GUTTER SHALL BE DONE IN ACCORDANCE WITH THE APPLICABLE PORTIONS OF SECTION 440 AND 606 OF THE STANDARD SPECIFICATIONS.

⑦ THE LOCATIONS OF REMOVAL AND REPLACEMENT OF EXISTING CURB OR CURB AND GUTTER SHALL BE DETERMINED BY THE RESIDENT ENGINEER AT THE TIME OF CONSTRUCTION.

CURB OR CURB AND GUTTER REMOVAL AND REPLACEMENT

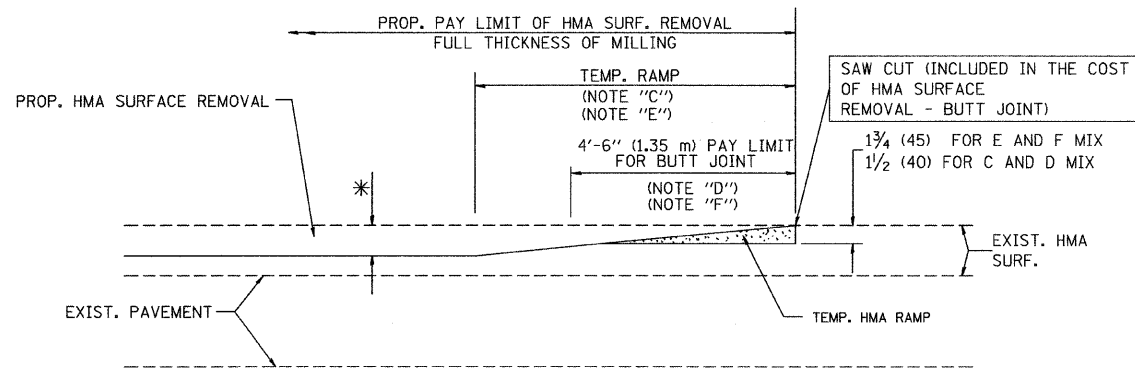
ALL DIMENSIONS ARE IN INCHES (MILLIMETERS) UNLESS OTHERWISE SHOWN.

FILE NAME = 06326-DT18-03 - BD-24	USER NAME = gagliardi	DESIGNED - A. HOUSEH	REVISED - R. SHAH 10-03-96	STATE OF ILLINOIS DEPARTMENT OF TRANSPORTATION	CURB OR CURB AND GUTTER REMOVAL AND REPLACEMENT	F.A.U. RTE. 1598	SECTION 09-00024-00-RS	COUNTY COOK	TOTAL SHEETS 15	SHEET NO. 12
	PLOT SCALE = 5/8" = 1' IN.	DRAWN -	REVISED - M. GOMEZ 01-22-01			SCALE:	SHEET NO. 12 OF 15 SHEETS	STA. TO STA.	FED. ROAD DIST. NO. 1	ILLINOIS
	PLOT DATE = 1/4/2008	CHECKED - 03-11-94	REVISED - R. BORO 01-01-07							



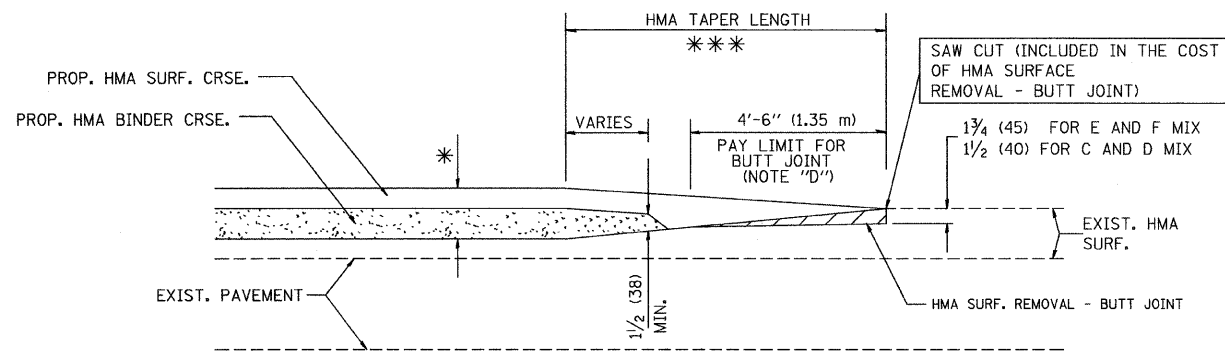
MILLED TEMPORARY RAMP
(FOR BUTT JOINT AND HMA TAPER SEE DETAIL BELOW)

OPTION 1

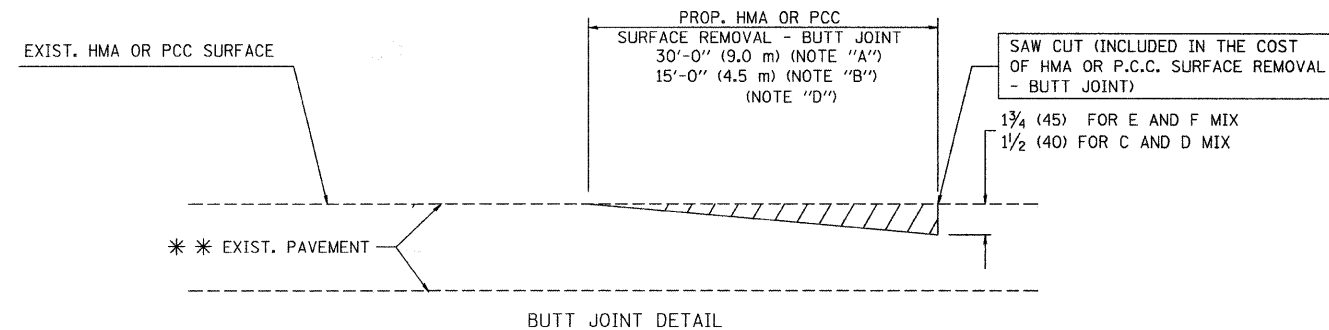


HMA CONSTRUCTED TEMPORARY RAMP
(FOR BUTT JOINT AND HMA TAPER SEE DETAIL BELOW)

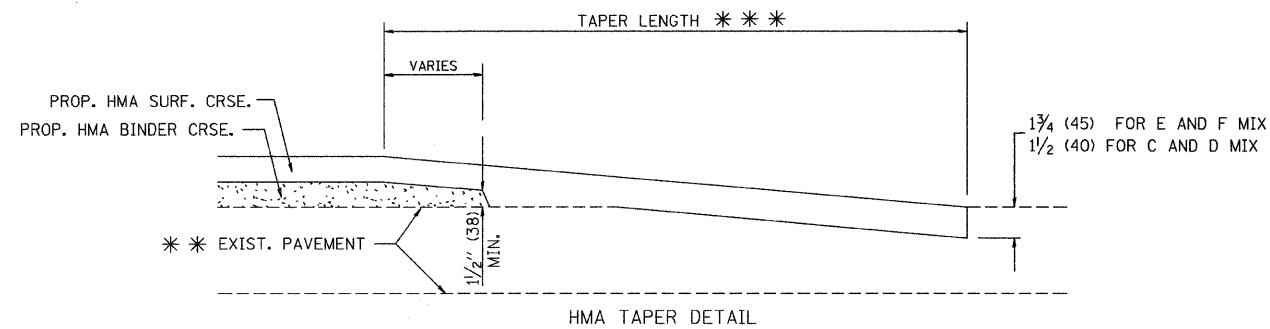
OPTION 2
TYPICAL TEMPORARY RAMP



TYPICAL BUTT JOINT AND HMA TAPER
FOR MILLING AND RESURFACING



BUTT JOINT DETAIL



HMA TAPER DETAIL

TYPICAL BUTT JOINT AND HMA TAPER
FOR RESURFACING ONLY

*** PC CONCRETE, HMA OR HMA RESURFACED PAVEMENT.

NOTES

- A: MAINLINE ROADWAYS AND MAJOR SIDE ROADS.
 - B: MINOR SIDE ROADS.
 - C: THE TEMP. RAMP SHALL BE CONSTRUCTED IMMEDIATELY UPON REMOVAL OF THE EXISTING HMA SURFACE.
 - D: THE BUTT JOINT SHALL BE CONSTRUCTED IMMEDIATELY PRIOR TO PLACING THE PROPOSED HMA COURSES.
 - E: TAPER THE TEMP. RAMP AT A RATE OF 3'-0" (900 mm) PER 1 INCH (25 mm) OF MILLING THICKNESS.
 - F: INSTALLATION AND REMOVAL OF THE 4'-6" (1.35 m) TEMP. RAMP IS INCLUDED IN COST OF HMA SURFACE REMOVAL - BUTT JOINT
 - G: SEE ARTICLE 406.08 AND 406.14 OF THE STANDARD SPECIFICATIONS FOR "HMA AND/OR PCC SURFACE REMOVAL, BUTT JOINT".
- * SEE TYPICAL SECTIONS FOR MILLING THICKNESS.

*** 20'-0" (6.1 m) PER 1 (25) RESURFACING (NOTE "A")
10'-0" (3.0 m) PER 1 (25) RESURFACING (NOTE "B")

BASIS OF PAYMENT:

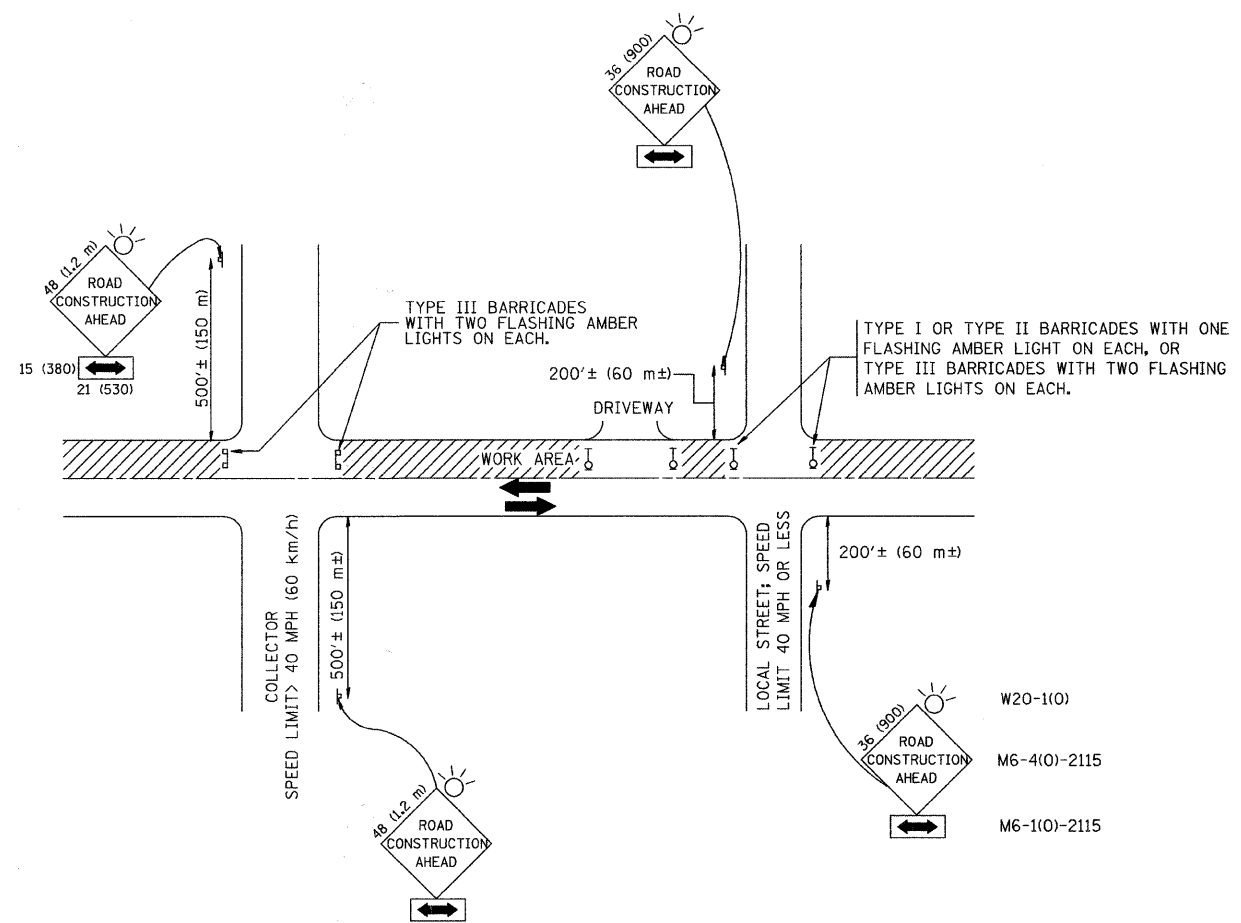
THE BUTT JOINT WILL BE PAID FOR AT THE CONTRACT UNIT PRICE PER SQUARE YARD (SQUARE METER) FOR "HOT-MIX ASPHALT SURFACE REMOVAL - BUTT JOINT" OR FOR "PORTLAND CEMENT CONCRETE SURFACE REMOVAL - BUTT JOINT".

ALL DIMENSIONS ARE IN INCHES (MILLIMETERS) UNLESS OTHERWISE SHOWN.

FILE NAME = 09320-DT1S-04 - BD-32	USER NAME = gaglienobt	DESIGNED - M. DE YONG	REVISED - R. SHAH 10-25-94
		CHECKED -	REVISED - A. ABBAS 03-21-97
	PLOT SCALE = 5/8" = 1' IN.	DRAWN -	REVISED - M. GOMEZ 04-06-01
	PLOT DATE = 1/4/2008	CHECKED - 06-13-90	REVISED - R. BORO 01-01-07

STATE OF ILLINOIS
DEPARTMENT OF TRANSPORTATION

BUTT JOINT AND HMA TAPER DETAILS		F.A.U. RTE.	SECTION	COUNTY	TOTAL SHEETS	SHEET NO.
		1598	09-00024-00-RS	COOK	15	13
		BD400-05 BD32		CONTRACT NO. 63304		
SCALE:	SHEET NO. 13 OF 15 SHEETS	STA.	TO STA.		FED. ROAD DIST. NO. 1 ILLINOIS FED. AID PROJECT ARA-9003(428)	



TRAFFIC CONTROL AND PROTECTION FOR SIDE ROADS, INTERSECTIONS, AND DRIVEWAYS

NOTES:

- A. FOR NO LANE RESTRICTION ON THE SIDE ROAD OR DRIVEWAYS
 1. SIDE ROAD WITH A SPEED LIMIT OF 40 MPH (60 km/h) OR LESS AS SHOWN ON THE DRAWING AND AS DIRECTED BY THE ENGINEER:
 - a) ONE **ROAD CONSTRUCTION AHEAD** SIGN 36 x 36 (900x900) WITH A FLASHER AND FLAG MOUNTED ON IT APPROXIMATELY 200' (60 m) IN ADVANCE OF THE MAIN ROUTE.
 - b) THE CLOSED PORTION OF THE MAIN ROUTE SHALL BE PROTECTED BY BLOCKING WITH TYPE I, TYPE II OR TYPE III BARRICADES, 1/3 OF THE CROSS SECTION OF THE CLOSED PORTION.
 2. SIDE ROAD WITH A SPEED LIMIT GREATER THAN 40 MPH (60 km/h) AS SHOWN ON THE DRAWING AND AS DIRECTED BY THE ENGINEER:
 - a) ONE **ROAD CONSTRUCTION AHEAD** SIGN 48 x 48 (1.2 m x 1.2 m) WITH A FLASHER MOUNTED ON IT APPROXIMATELY 500' (150 m) IN ADVANCE OF THE MAIN ROUTE.
 - b) THE CLOSED PORTION OF THE MAIN ROUTE SHALL BE PROTECTED BY BLOCKING WITH TYPE III BARRICADES, 1/2 OF THE CROSS SECTION OF THE CLOSED PORTION.
 3. WHEN THE SIDE ROAD LIES BETWEEN THE BEGINNING OF THE MAINLINE SIGNING AND THE WORK ZONE, A SINGLE HEADED ARROW (M6-1) SHALL BE USED IN LIEU OF THE DOUBLE HEADED ARROW (M6-4).
- B. FOR A LANE CLOSURE ON A SIDE ROAD OR DRIVEWAY:

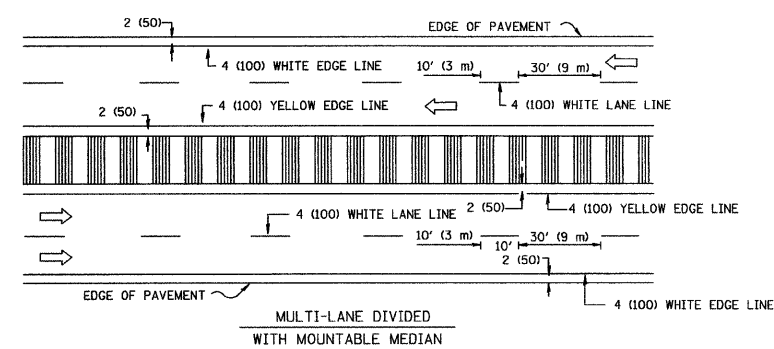
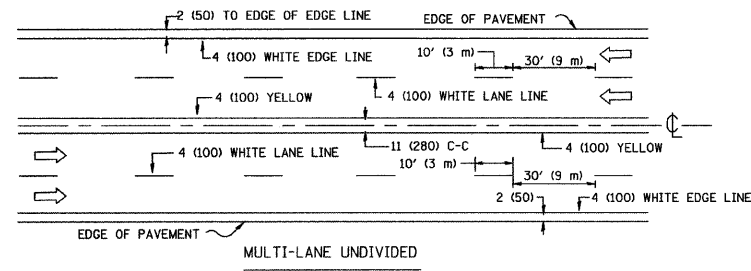
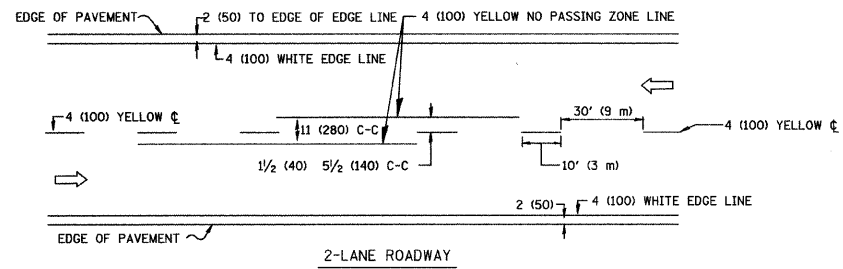
USE APPLICABLE PORTIONS OF THE TYPICAL APPLICATION OF TRAFFIC CONTROL DEVICES (STD. 701501, STD. 701606 OR THE APPROPRIATE STANDARD). THE SPACING OF SIGNS AND BARRICADES SHALL BE ADJUSTED FOR FIELD CONDITIONS AS DIRECTED BY THE ENGINEER. THE DIRECTIONAL ARROW SHALL BE COVERED OR REMOVED WHEN NO LONGER CONSISTENT WITH THE SIDE ROAD LANE CLOSURE.
- C. ADVANCE WARNING SIGNS ARE TO BE OMITTED ON DRIVEWAY UNLESS OTHERWISE NOTED.
- D. THE TRAFFIC CONTROL AND PROTECTION FOR SIDE ROADS, INTERSECTIONS, AND DRIVEWAYS SHALL BE INCIDENTAL TO THE COST OF SPECIFIED TRAFFIC CONTROL STANDARDS OR ITEMS.

All dimensions are in millimeters (inches) unless otherwise shown.

FILE NAME = 09026-0719-01 - TC-10	USER NAME = geg1tanobt	DESIGNED = LHA	REVISED = J. OBERLE 10-18-95
		CHECKED =	REVISED = A. HOUSEH 03-06-96
	PLOT SCALE = 50.000' / IN.	DRAWN =	REVISED = A. HOUSEH 10-15-96
	PLOT DATE = 1/4/2008	CHECKED = 06-89	REVISED = T. RAMMACHER 01-06-00

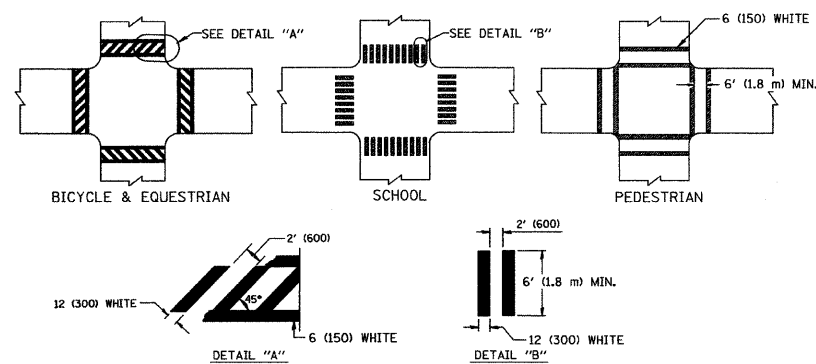
STATE OF ILLINOIS
DEPARTMENT OF TRANSPORTATION

TRAFFIC CONTROL AND PROTECTION FOR SIDE ROADS, INTERSECTIONS, AND DRIVEWAYS		F.A.U. RTE.	SECTION	COUNTY	TOTAL SHEETS	SHEET NO.
		1598	09-00024-00-RS	COOK	15	14
SCALE:		SHEET NO. 14 OF 15 SHEETS		STA.	TO STA.	
		FED. ROAD DIST. NO. 1		ILLINOIS	FED. AID PROJECT ARA-9003(428)	

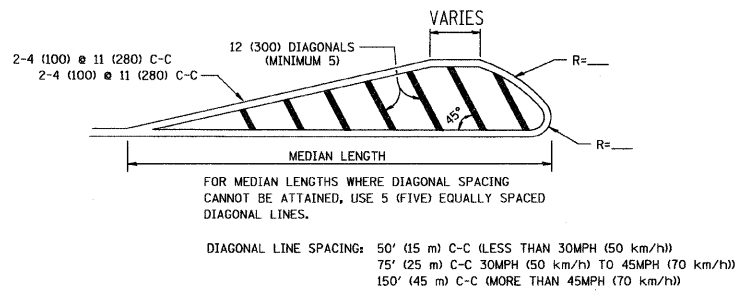
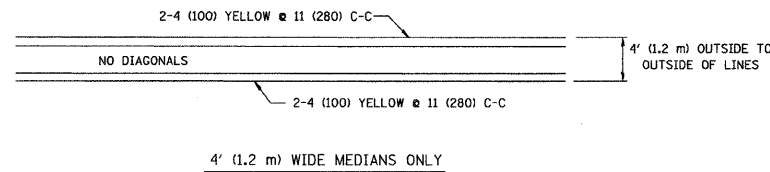


NOTE: MEDIANS WITH BARRIER CURB DO NOT REQUIRE AN EDGE LINE

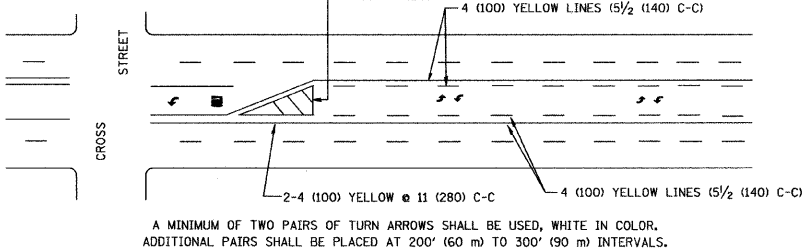
TYPICAL LANE AND EDGE LINE MARKING



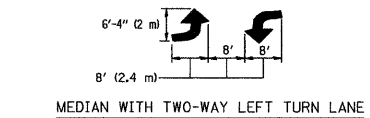
TYPICAL CROSSWALK MARKING



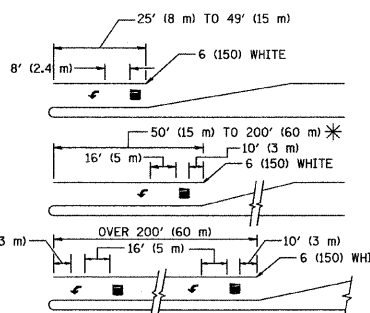
MEDIANS OVER 4' (1.2 m) WIDE



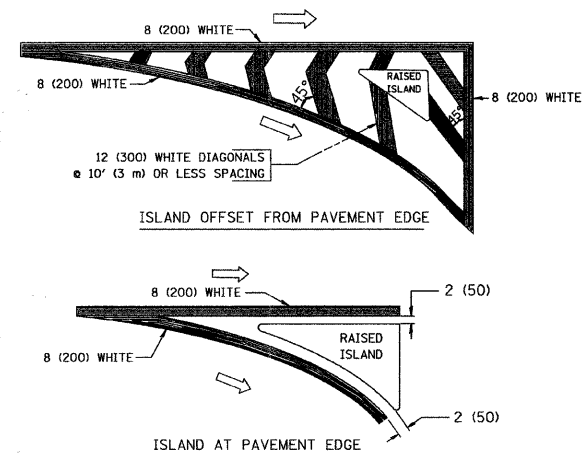
TYPICAL PAINTED MEDIAN MARKING



TYPICAL LEFT (OR RIGHT) TURN LANE



TYPICAL TURN LANE MARKING



TYPICAL ISLAND MARKING

TYPE OF MARKING	WIDTH OF LINE	PATTERN	COLOR	SPACING / REMARKS
CENTERLINE ON 2 LANE PAVEMENT	4 (100)	SKIP-DASH	YELLOW	10' (3 m) LINE WITH 30' (9 m) SPACE
CENTERLINE ON MULTI-LANE UNDIVIDED PAVEMENT	2 @ 4 (100)	SOLID	YELLOW	11 (280) C-C
NO PASSING ZONE LINES: FOR ONE DIRECTION	4 (100)	SOLID	YELLOW	5 1/2 (140) C-C FROM SKIP-DASH CENTERLINE
NO PASSING ZONE LINES: FOR BOTH DIRECTIONS	2 @ 4 (100)	SOLID	YELLOW	11 (280) C-C OMIT SKIP-DASH CENTERLINE BETWEEN
LANE LINES	4 (100)	SKIP-DASH	WHITE	10' (3 m) LINE WITH 30' (9 m) SPACE
LANE LINES	5 (125) ON FREEWAYS	SKIP-DASH	WHITE	10' (3 m) LINE WITH 30' (9 m) SPACE
DOTTED LINES (EXTENSIONS OF CENTER, LANE OR TURN LANE MARKINGS)	SAME AS LINE BEING EXTENDED	SKIP-DASH	SAME AS LINE BEING EXTENDED	2' (600) LINE WITH 6' (1.8 m) SPACE
EDGE LINES	4 (100)	SOLID	YELLOW-LEFT WHITE-RIGHT	OUTLINE MOUNTABLE MEDIANS IN YELLOW; EDGE LINES ARE NOT USED NEXT TO BARRIER CURB
TURN LANE MARKINGS	6 (150) LINE; FULL SIZE LETTERS & SYMBOLS (8' (2.4m))	SOLID	WHITE	SEE TYPICAL TURN LANE MARKING DETAIL
TWO WAY LEFT TURN MARKING	2 @ 4 (100) EACH DIRECTION	SKIP-DASH AND SOLID	YELLOW	10' (3 m) LINE WITH 30' (9 m) SPACE FOR SKIP-DASH; 5 1/2 (140) C-C BETWEEN SOLID LINE AND SKIP-DASH LINE
TWO WAY LEFT TURN MARKING	8' (2.4m) LEFT ARROW	IN PAIRS	WHITE	SEE TYPICAL TWO-WAY LEFT TURN MARKING DETAIL
CROSSWALK LINES (PEDESTRIAN) A. DIAGONALS (BIKE & EQUESTRIAN) B. LONGITUDINAL BARS (SCHOOL)	2 @ 6 (150) 12 (300) @ 45° 12 (300) @ 90°	SOLID SOLID SOLID	WHITE WHITE WHITE	NOT LESS THAN 6' (1.8 m) APART 2' (600) APART 2' (600) APART SEE TYPICAL CROSSWALK MARKING DETAILS.
STOP LINES	24 (600)	SOLID	WHITE	PLACE 4' (1.2 m) IN ADVANCE OF AND PARALLEL TO CROSSWALK, IF PRESENT. OTHERWISE, PLACE AT DESIRED STOPPING POINT, PARALLEL TO CROSSROAD CENTERLINE, WHERE POSSIBLE
PAINTED MEDIANS	2 @ 4 (100) WITH 12 (300) DIAGONALS @ 45°	SOLID	YELLOW: TWO WAY TRAFFIC WHITE: ONE WAY TRAFFIC	11 (280) C-C FOR THE DOUBLE LINE SEE TYPICAL PAINTED MEDIAN MARKING.
GORE MARKING AND CHANNELIZING LINES	8 (200) WITH 12 (300) DIAGONALS @ 45°	SOLID	WHITE	DIAGONALS: 15' (4.5 m) C-C (LESS THAN 30MPH (50 km/h)) 20' (6 m) C-C (30MPH (50 km/h) TO 45MPH (70 km/h)) 30' (9 m) C-C (OVER 45MPH (70 km/h))
RAILROAD CROSSING	24 (600) TRANSVERSE LINES; "RR" 15 6' (1.8 m) LETTERS; 16 (400) LINE FOR "X"	SOLID	WHITE	SEE STATE STANDARD 780001 AREA OF: "R"=3.6 SQ. FT. (0.33 m ²) EACH "X"=54.0 SQ. FT. (5.0 m ²)
SHOULDER DIAGONALS	12 (300) @ 45°	SOLID	WHITE - RIGHT YELLOW - LEFT	50' (15 m) C-C (LESS THAN 30MPH (50 km/h)) 75' (25 m) C-C (30 MPH (50 km/h) TO 45MPH (70 km/h)) 150' (45 m) C-C (OVER 45MPH (70 km/h))

FOR FURTHER DETAILS ON PAVEMENT MARKING REFER TO STANDARD SPECIFICATIONS FOR ROAD AND BRIDGE CONSTRUCTION AND STATE STANDARD 780001.

All dimensions are in inches (millimeters) unless otherwise shown.

FILE NAME = 09326-0713-02 - TC-13	USER NAME = gegljenobt	DESIGNED = EVERS	REVISED = T. RAMMACHER 10-27-94
		CHECKED =	REVISED = A. HOUSEH 10-09-96
	PLOT SCALE = 5/8" = 1' / IN.	DRAWN =	REVISED = A. HOUSEH 10-17-96
	PLOT DATE = 1/4/2008	CHECKED = 03-19-90	REVISED = T. RAMMACHER 01-06-00

STATE OF ILLINOIS
DEPARTMENT OF TRANSPORTATION

DISTRICT ONE TYPICAL PAVEMENT MARKINGS				F.A.U. R.T.E. 1598	SECTION 09-00024-00-RS	COUNTY COOK	TOTAL SHEETS 15	SHEET NO. 15
SCALE: SHEET NO. 15 OF 15 SHEETS STA. TO STA.				TC-13		CONTRACT NO. 63304		
				FED. ROAD DIST. NO. 1 ILLINOIS		FED. AID PROJECT ARA-9003(428)		