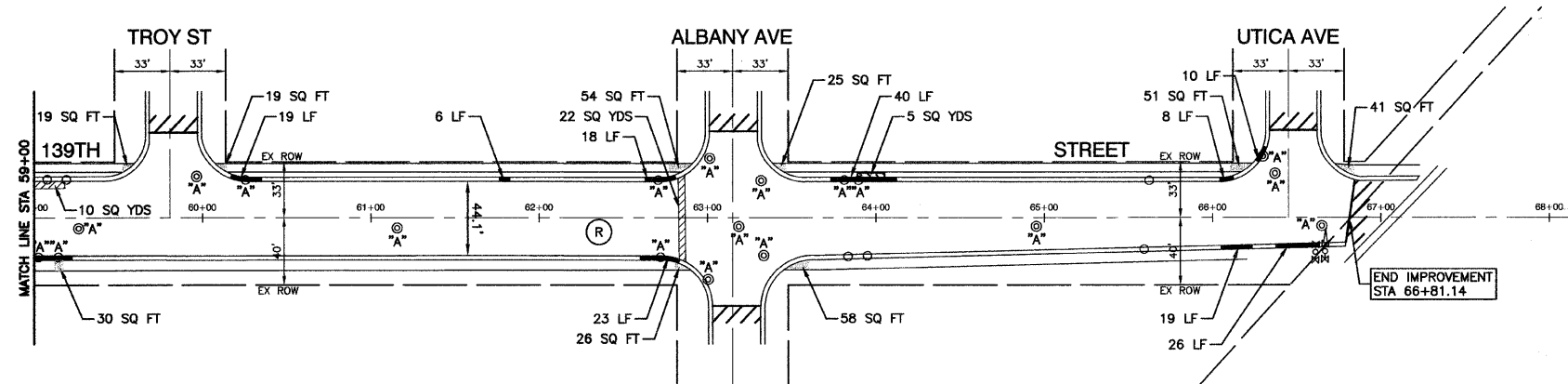
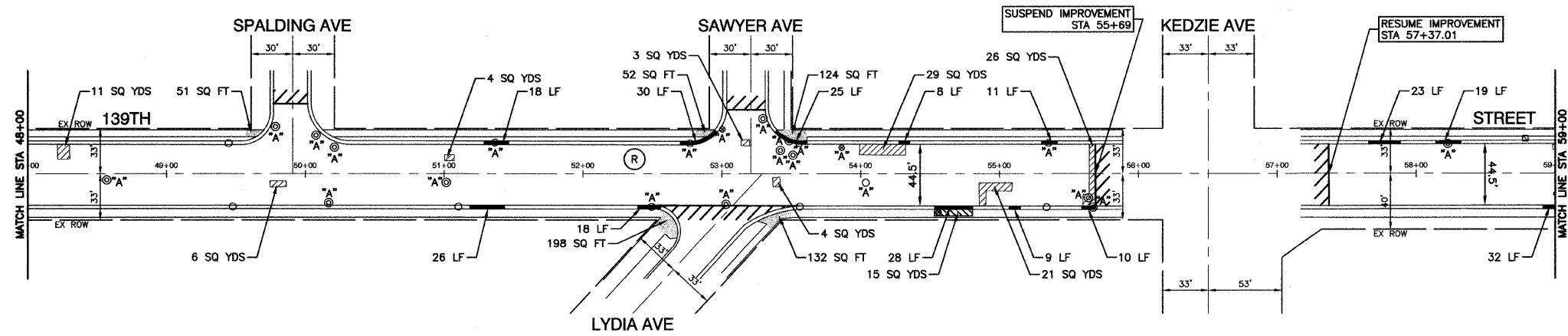
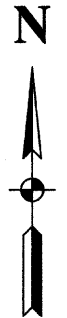


SECTION 2, TOWNSHIP 36, RANGE 13
SECTION 1, TOWNSHIP 36, RANGE 13



NOTES:
1. DETECTABLE WARNINGS ARE TO BE INSTALLED AT LOCATIONS OF SIDEWALK REMOVAL AND REPLACEMENT. CONTRACTOR TO POSITION AND PLACE DETECTABLE WARNINGS AT THE DIRECTION OF THE ENGINEER.

- LEGEND**
- BITUMINOUS PAVEMENT REPAIR
 - HOT-MIX ASPHALT SURFACE REMOVAL - BUTT JOINT (10' UNLESS OTHERWISE INDICATED)
 - CONCRETE SIDEWALK REMOVAL AND REPLACEMENT
 - CONCRETE CURB, CONCRETE CURB AND GUTTER REMOVAL AND REPLACEMENT
 - HOT-MIX ASPHALT SURFACE REMOVAL, 2" LEVELING BINDER (MACHINE METHOD), N50 3/4" HOT-MIX ASPHALT SURFACE COURSE, MIX "D", N50 1 1/2"
 - STRUCTURE TO BE ADJUSTED
 - STRUCTURE TO BE RECONSTRUCTED

FILE NAME = 09326-PLAN-01 - P03	USER NAME =	DESIGNED - PKB	REVISED -
		CHECKED - PKB	REVISED -
	PLOT SCALE = 1"=50'	DRAWN - AG/PS	REVISED -
	PLOT DATE = 09-18-09	CHECKED - AG	REVISED -

STATE OF ILLINOIS
DEPARTMENT OF TRANSPORTATION

139TH STREET RESURFACING CRAWFORD AVENUE TO COOPERS GROVE ROAD PAVEMENT PLAN			
SCALE: 1"=50'	SHEET NO. 6	OF 15 SHEETS	STA. 48+00 TO STA. 66+77.85

F.A.U. RTE. 1598	SECTION 09-00024-00-RS	COUNTY COOK	TOTAL SHEETS 15	SHEET NO. 6
FED. ROAD DIST. NO. 1 ILLINOIS			FED. AID PROJECT ARA-9003(428)	