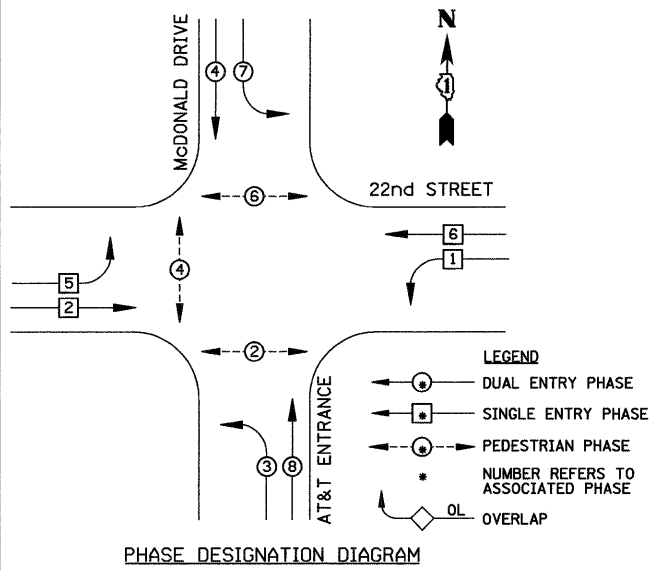
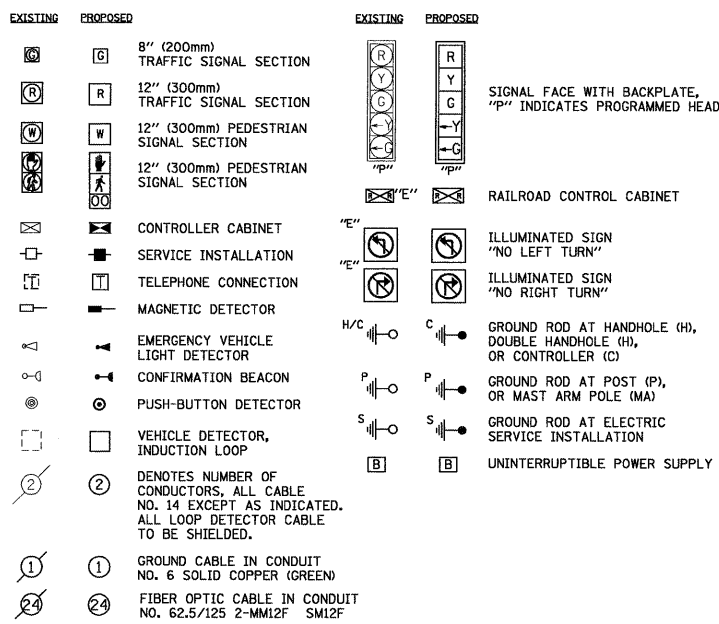


CONTROLLER SEQUENCE



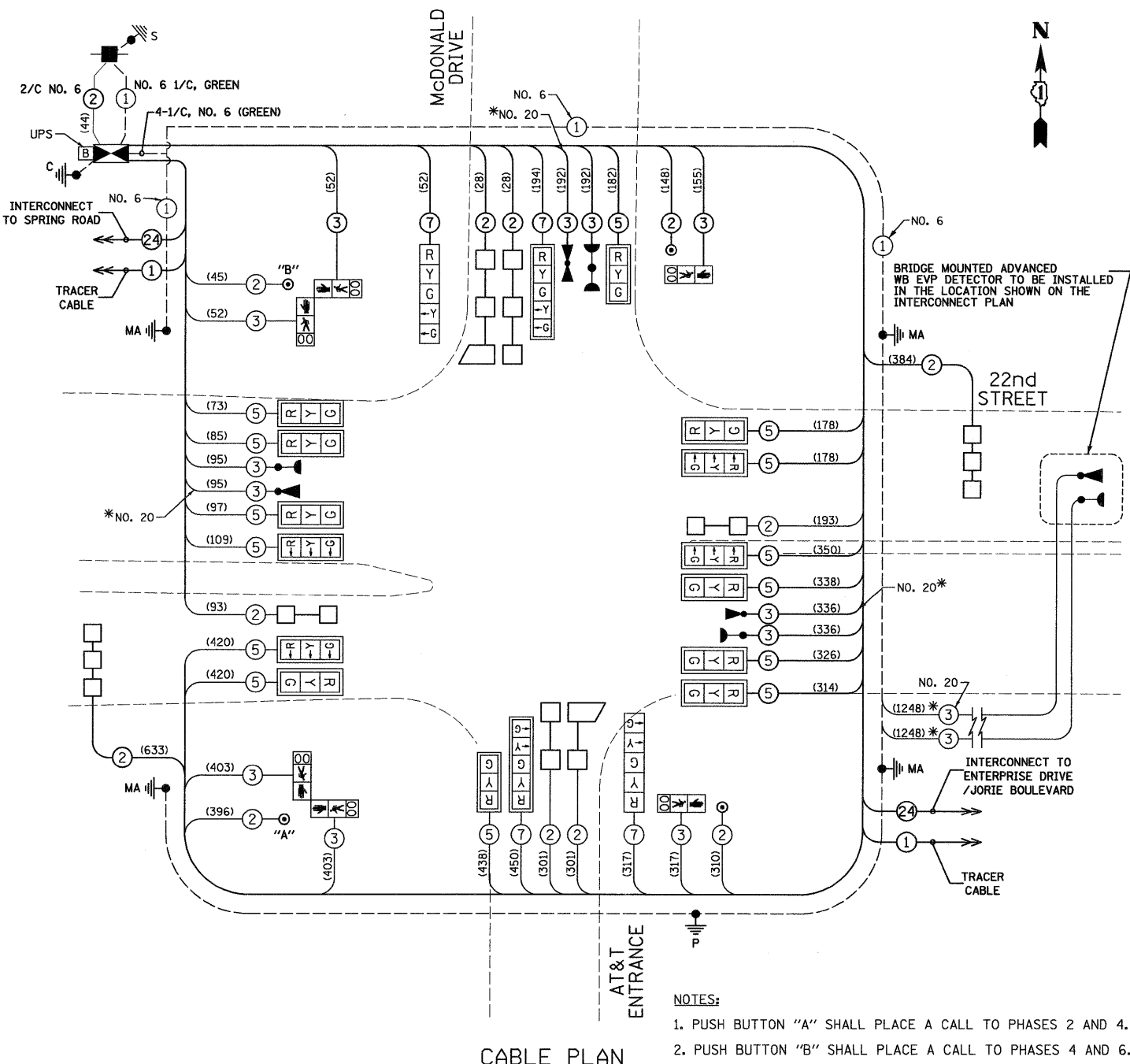
CABLE PLAN LEGEND



SCHEDULE OF QUANTITIES

DETECTABLE WARNINGS	50 FT	54
SIDEWALK REMOVAL	50 FT	54
SIGN PANEL, TYPE 1	50 FT	20
RELOCATE SIGN PANEL, TYPE 1	50 FT	21
THERMOPLASTIC PAVEMENT MARKING - LETTERS AND SYMBOLS	50 FT	63
CONDUIT IN TRENCH, 2" DIA., GALVANIZED STEEL	FOOT	566
CONDUIT IN TRENCH, 2 1/2" DIA., GALVANIZED STEEL	FOOT	7
CONDUIT IN TRENCH, 3" DIA., GALVANIZED STEEL	FOOT	51
CONDUIT IN TRENCH, 3 1/2" DIA., GALVANIZED STEEL	FOOT	24
CONDUIT IN TRENCH, 4" DIA., GALVANIZED STEEL	FOOT	8
CONDUIT PUSHED, 2" DIA., GALVANIZED STEEL	FOOT	65
CONDUIT PUSHED, 3 1/2" DIA., GALVANIZED STEEL	FOOT	71
TRENCH AND BACKFILL FOR ELECTRICAL WORK	FOOT	656
TRANSCEIVER - FIBER OPTIC	EACH	1
FULL-ACTUATED CONTROLLER AND TYPE IV CABINET, SPECIAL	EACH	1
ELECTRIC CABLE IN CONDUIT, SIGNAL NO. 14 2C	FOOT	899
ELECTRIC CABLE IN CONDUIT, SIGNAL NO. 14 3C	FOOT	3253
ELECTRIC CABLE IN CONDUIT, SIGNAL NO. 14 5C	FOOT	3508
ELECTRIC CABLE IN CONDUIT, SIGNAL NO. 14 7C	FOOT	1013
ELECTRIC CABLE IN CONDUIT, SERVICE, NO. 6 2C	FOOT	44
ELECTRIC CABLE IN CONDUIT, LEAD-IN, NO. 14 1 PAIR	FOOT	1961
DOUBLE HANDHOLE	EACH	5
TRAFFIC SIGNAL POST, GALVANIZED STEEL 16 FT.	EACH	1
STEEL MAST ARM ASSEMBLY AND POLE, 52 FT.	EACH	1
STEEL MAST ARM ASSEMBLY AND POLE, 58 FT.	EACH	1
STEEL MAST ARM ASSEMBLY AND POLE WITH DUAL MAST ARMS, 12 FT. AND 42 FT.	EACH	1
STEEL MAST ARM ASSEMBLY AND POLE WITH DUAL MAST ARMS, 18 FT. AND 34 FT.	EACH	1
CONCRETE FOUNDATION, TYPE A	FOOT	8
CONCRETE FOUNDATION, TYPE C	FOOT	4
CONCRETE FOUNDATION, TYPE E 36-INCH DIAMETER	FOOT	45
CONCRETE FOUNDATION, TYPE E 42-INCH DIAMETER	FOOT	21
DRILL EXISTING HANDHOLE	EACH	5
SIGNAL HEAD, LED, 1-FACE, 3-SECTION, MAST-ARM MOUNTED	EACH	14
SIGNAL HEAD, LED, 1-FACE, 5-SECTION, BRACKET MOUNTED	EACH	2
SIGNAL HEAD, LED, 1-FACE, 5-SECTION, MAST-ARM MOUNTED	EACH	2
PEDESTRIAN SIGNAL HEAD, L.E.D., 1-FACE, BRACKET MOUNTED WITH COUNTDOWN TIMER	EACH	2
PEDESTRIAN SIGNAL HEAD, L.E.D., 2-FACE, BRACKET MOUNTED WITH COUNTDOWN TIMER	EACH	2
INDUCTIVE LOOP DETECTOR	EACH	8
DETECTOR LOOP, TYPE 1	FOOT	756
LIGHT DETECTOR	EACH	4
LIGHT DETECTOR AMPLIFIER	EACH	1
PEDESTRIAN PUSH-BUTTON	EACH	4
REMOVE ELECTRIC CABLE FROM CONDUIT	FOOT	9500
REMOVE EXISTING HANDHOLE	EACH	8
REMOVE EXISTING CONCRETE FOUNDATION	EACH	5
RE-OPTIMIZE TRAFFIC SIGNAL SYSTEM 1/2 LEVEL II (per Intersection)	EACH	1
SERVICE INSTALLATION, GROUND MOUNT	EACH	1
ELECTRIC CABLE IN CONDUIT, GROUNDING, NO. 6 1C	FOOT	475
ELECTRIC CABLE IN CONDUIT, NO. 20 3/C, TWISTED & SHIELDED	FOOT	1871
UNINTERRUPTIBLE POWER SUPPLY	EACH	1
REMOVE EXISTING TEMPORARY TRAFFIC SIGNAL EQUIPMENT	EACH	1
REBUILD EXISTING HANDHOLE TO DOUBLE HANDHOLE	EACH	1

* 100% COST TO THE VILLAGE OF OAKBROOK

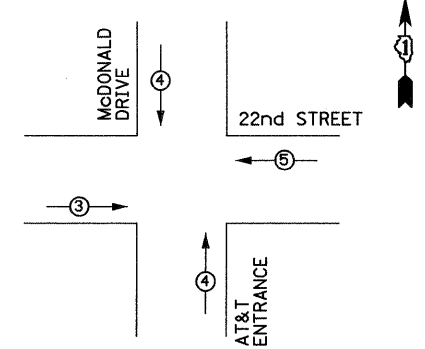


CABLE PLAN

NOTE: (XXX) DENOTES CABLE LENGTH

- NOTES:
- PUSH BUTTON "A" SHALL PLACE A CALL TO PHASES 2 AND 4.
 - PUSH BUTTON "B" SHALL PLACE A CALL TO PHASES 4 AND 6.

EMERGENCY VEHICLE PREEMPTION SEQUENCE



PROPOSED EMERGENCY VEHICLE PREEMPTOR				
EMERGENCY VEHICLE PREEMPTOR	3	4	5	
MOVEMENT				

I.D.O.T TRAFFIC SIGNAL INSTALLATION ELECTRICAL SERVICE REQUIREMENTS					TOTAL WATTAGE
TYPE	NO. LAMPS	WATTAGE INCAND.	LED	%OPERATION	
SIGNAL (RED)	18	135	17	0.50	153
(YELLOW)	18	135	25	0.25	112.5
(GREEN)	18	135	15	0.25	67.5
ARROW	8	135	12	0.10	9.6
PED. SIGNAL	6	90	25	1.00	150
CONTROLLER	1	100	100	1.00	100
ILLUM. SIGN		84		0.05	
FLASHER				0.50	

ENERGY COSTS TO: ILLINOIS DEPARTMENT OF TRANSPORTATION 201 W. CENTER COURT SCHAMBURG, IL 60196 TOTAL = 592.6

ENERGY SUPPLY CONTACT: COMPANY: COMED

FOUNDATION (DEPTH)	FT. (m)	CABLE SLACK	FT. (m)	VERTICAL	FT. (m)
TYPE A - POST	4 (1.2)	HANDHOLE	6.5 (2.0)	ALL FOUNDATIONS	3.0 (1.0)
D - CONTROLLER	4 (1.2)	DOUBLE HANDHOLE	13 (4.0)	MAST ARM (L) POLE	20.0 (6.0)
E - M. ARM POLE		SIGNAL POST	0 (0.0)	BRACKET MOUNTED	13 (4.0)
		24" (600mm)	10 (3.0)	CONTROLLER CAB.	0 (0.0)
		30" (750mm)	15 (4.6)	FIBER OPTIC	13 (4.0)
				ELECTRIC SERVICE	1 (0.5)
				GROUND CABLE	1 (0.5)

NOTE: THE TRAFFIC SIGNAL CONTROL EQUIPMENT FOR THIS PROJECT SHALL BE "ECONOLITE".

STATE OF ILLINOIS DEPARTMENT OF TRANSPORTATION

SCHEDULE OF QUANTITIES, CABLE PLAN, PHASE DESIGNATION DIAGRAM AND EMERGENCY VEHICLE PREEMPTION 22nd STREET AT McDONALD DRIVE /AT&T ENTRANCE

PREPARED BY: **CEMCON, Ltd.**
 Consulting Engineers, Land Surveyors & Planners
 2280 White Oak Circle, Suite 100
 Aurora, Illinois 60504-9675
 Ph: 630.862.2100 Fax: 630.862.2199
 E-Mail: cadd@cemcon.com Website: www.cemcon.com

F.A.U. RTE. 1453	SECTION 2009-080 TS	COUNTY DuPAGE	TOTAL SHEETS 19	SHEET NO. 10
CONTRACT NO. 60117				
FED. ROAD DIST. NO. ILLINOIS FED. AID PROJECT				

FILE NAME = MICROSTV\352082\ 22ND @ McDONALDS CAB
 USER NAME = RDS
 PLOT SCALE = 1"=20'
 PLOT DATE = 09-21-09

DESIGNED - KK
 DRAWN - RDS
 CHECKED - BPT
 DATE - 09-21-09

REVISED -
 REVISED -
 REVISED -
 REVISED -

SCALE: N.T.S. SHEET NO. OF SHEETS STA. TO STA.