

F.A.U. RTE.	SECTION	COUNTY	TOTAL SHEETS	SHEET NO.
1453	2009-080 TS	DUPAGE	19	1
FED. ROAD DIST. NO.	ILLINOIS	CONTRACT NO.	60117	

D-91-861-09

INDEX OF SHEETS

1. TITLE SHEET
2. GENERAL NOTES
3. SUMMARY OF QUANTITIES
- 4.-7. DISTRICT 1 STANDARD TRAFFIC SIGNAL DESIGN DETAILS
8. EXISTING TRAFFIC SIGNAL REMOVAL PLAN
22nd STREET AT McDONALD DRIVE /AT&T ENTRANCE
9. TRAFFIC SIGNAL INSTALLATION PLAN
22nd STREET AT McDONALD DRIVE /AT&T ENTRANCE
10. SCHEDULE OF QUANTITIES, CABLE PLAN, PHASE DESIGNATION DIAGRAM AND EMERGENCY VEHICLE PREEMPTION
22nd STREET AT McDONALD DRIVE /AT&T ENTRANCE
11. ISLAND REMOVAL AND ROADWAY REPLACEMENT
22nd STREET AT ENTERPRISE DRIVE /JORIE BOULEVARD
12. STRIPING PLAN
22nd STREET AT ENTERPRISE DRIVE /JORIE BOULEVARD
13. TRAFFIC SIGNAL REMOVAL PLAN
22nd STREET AT ENTERPRISE DRIVE /JORIE BOULEVARD
14. TRAFFIC SIGNAL INSTALLATION PLAN
22nd STREET AT ENTERPRISE DRIVE /JORIE BOULEVARD
15. SCHEDULE OF QUANTITIES, CABLE PLAN, PHASE DESIGNATION DIAGRAM AND EMERGENCY VEHICLE PREEMPTION
22nd STREET AT ENTERPRISE DRIVE /JORIE BOULEVARD
16. INTERCONNECT PLAN 22nd STREET:
SPRING ROAD TO ENTERPRISE DRIVE /JORIE BOULEVARD
17. INTERCONNECT PLAN 22nd STREET:
INTERCONNECT SCHEMATIC
18. MAST ARM MOUNTED STREET NAME SIGN
22nd STREET AT ENTERPRISE DRIVE /JORIE BOULEVARD
19. DISTRICT ONE TYPICAL PAVEMENT MARKINGS

STATE OF ILLINOIS
DEPARTMENT OF TRANSPORTATION
DIVISION OF HIGHWAYS
PLANS FOR PROPOSED

F.A.U. 1453 / 22nd STREET
DISTRICT 1
TRAFFIC SIGNAL MODERNIZATION WITH INTERCONNECT

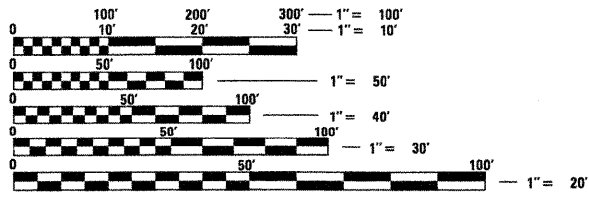
22nd STREET @ McDONALD DRIVE
22nd STREET @ JORIE BOULEVARD / ENTERPRISE DRIVE

DuPAGE COUNTY
SECTION 2009-080 TS
C-91-861-09



IDOT STANDARDS:

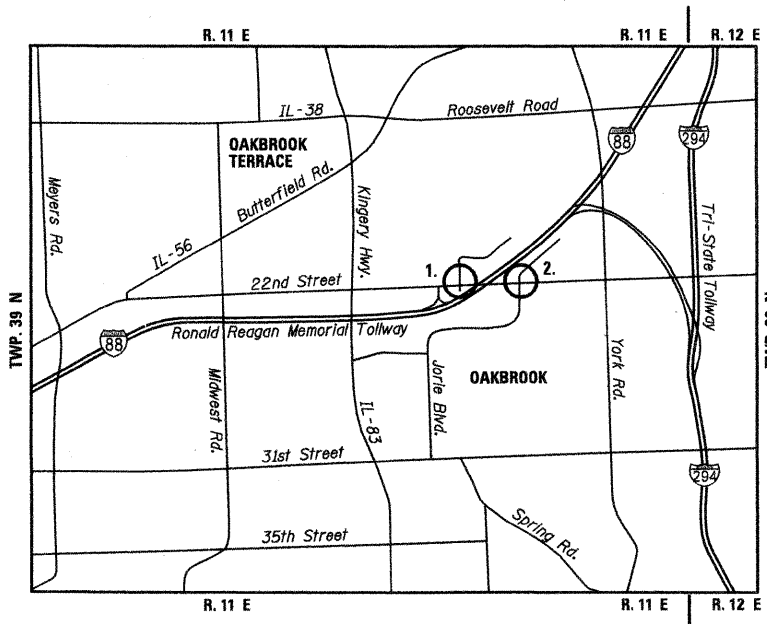
- 353001-04 PCC BASE COURSE WITH HMA BINDER AND SURFACE COURSES
- 424001-05 CURB RAMPS FOR SIDEWALKS
- 606001-04 CONCRETE CURB TYPE B AND COMBINATION CONCRETE CURB AND GUTTER
- 701006-03 OFF-RD OPERATIONS, 2L 2W, 15' (4.5 m) TO 24' (600 mm) FROM PAVEMENT EDGE
- 701101-02 OFF-RD OPERATIONS, MULTILANE, 15' (4.5 m) TO 24' (600 mm) FROM PAVEMENT EDGE
- 701301-03 LANE CLOSURE, 2L 2W, SHORT TIME OPERATIONS
- 701601-06 URBAN LANE CLOSURE, MULTILANE 1W OR 2W WITH NONTRAVERSABLE MEDIAN
- 701701-06 URBAN LANE CLOSURE, MULTILANE INTERSECTION
- 701801-04 LANE CLOSURE MULTILANE 1W OR 2W CROSSWALK OR SIDEWALK CLOSURE
- 701901-01 TRAFFIC CONTROL DEVICES
- 720001-01 SIGN PANEL MOUNTING DETAILS
- 781001-03 TYPICAL APPLICATIONS RAISED REFLECTIVE PAVEMENT MARKERS
- 814001-02 HANDHOLES
- 814006-02 DOUBLE HANDHOLES
- 857001-01 STANDARD PHASE DESIGNATION DIAGRAMS AND PHASE SEQUENCES
- 862001-01 UNINTERRUPTIBLE POWER SUPPLY (UPS)
- 873001-02 TRAFFIC SIGNAL GROUNDING & BONDING
- 877001-04 STEEL MAST ARM ASSEMBLY AND POLE 16' THROUGH 55'
- 877002-01 STEEL MAST ARM ASSEMBLY AND POLE 56' THROUGH 75'
- 877006-03 STEEL MAST ARM ASSEMBLY AND POLE WITH DUAL MAST ARMS
- 878001-07 CONCRETE FOUNDATION DETAILS
- 880006-01 TRAFFIC SIGNAL MOUNTING DETAILS
- 886001-01 DETECTOR LOOP INSTALLATIONS



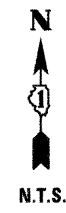
FULL SIZE PLANS HAVE BEEN PREPARED USING STANDARD ENGINEERING SCALES. REDUCED SIZED PLANS WILL NOT CONFORM TO STANDARD SCALES. IN MAKING MEASUREMENTS ON REDUCED PLANS, THE ABOVE SCALES MAY BE USED.

J.U.L.I.E.
JOINT UTILITY LOCATING INFORMATION FOR EXCAVATORS
1-800-892-0123
OR 811

CONTRACT NO. 60117



- LEGEND:**
1. 22nd Street @ McDonald Drive
 2. 22nd Street @ Jorie Boulevard / Enterprise Drive



Bruce P. Talsot DATE: 9-21-09
EXPIRES: 11-30-2009

PREPARED BY:
CEMCON, Ltd.
Consulting Engineers, Land Surveyors & Planners
2280 White Oak Circle, Suite 100
Aurora, Illinois 60504-9675
Ph: 630.862.2100 Fax: 630.862.2199
E-Mail: cadd@cemcon.com Website: www.cemcon.com

STATE OF ILLINOIS
DEPARTMENT OF TRANSPORTATION
DIVISION OF HIGHWAYS

SUBMITTED Oct. 16 2009

Deanne M. O'Keefe
DEPUTY DIRECTOR OF HIGHWAYS, REGION ENGINEER

December 4, 2009
Charles J. Ingerson
ENGINEER OF DESIGN AND ENVIRONMENT

December 4, 2009
Christine M. Reed
DIRECTOR OF HIGHWAYS, CHIEF ENGINEER

PRINTED BY THE AUTHORITY
OF THE STATE OF ILLINOIS

BUREAU OF TRAFFIC, DISTRICT ONE: STEPHEN TRAVIA / DARYLE DREW (847) 705-4420