

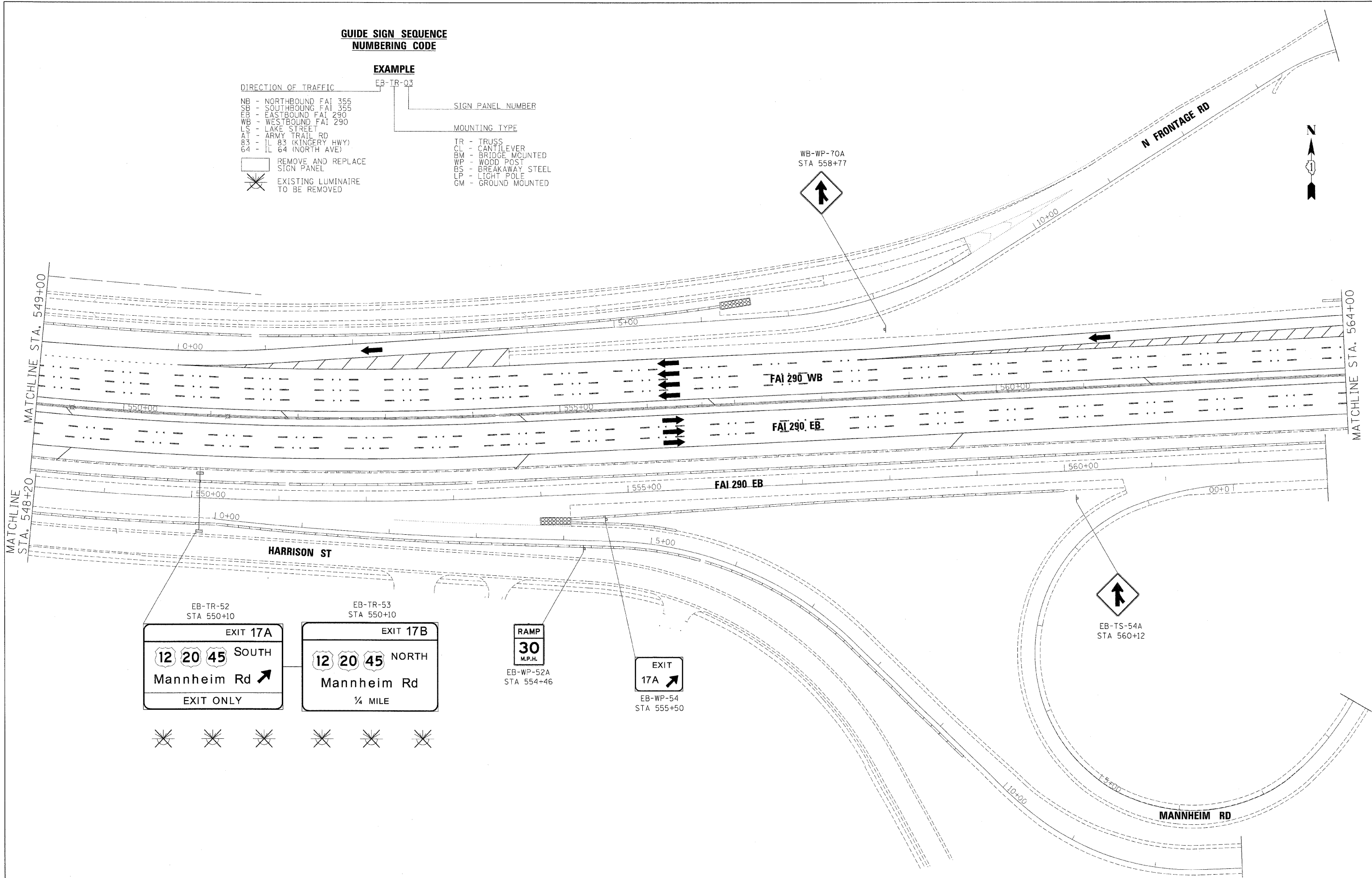


**GUIDE SIGN SEQUENCE
NUMBERING CODE**

EXAMPLE		EB-TR-03
DIRECTION OF TRAFFIC		SIGN PANEL NUMBER
NB - NORTHBOUND FAI 355		
SB - SOUTHBOUND FAI 355		
EB - EASTBOUND FAI 290		
WB - WESTBOUND FAI 290		
LS - LAKE STREET		
AT - ARMY TRAIL RD		
83 - IL 83 (KINGERY HWY)		
64 - IL 64 (NORTH AVE)		
	REMOVE AND REPLACE SIGN PANEL	
	EXISTING LUMINAIRE TO BE REMOVED	
		MOUNTING TYPE
		TR - TRUSS
		CL - CANTILEVER
		BM - BRIDGE MOUNTED
		WP - WOOD POST
		BS - BREAKAWAY STEEL
		LP - LIGHT POLE
		GM - GROUND MOUNTED



FILE NAME =	DESIGNED - AJP	REVISED -
...NrpIn.ABC.GBJ22.290.pvntnkg.11.dgn	DRAWN - TMB	REVISED -
USER NAME = jmajewski	CHECKED - JMM	REVISED -
PLOT DATE = 12/16/2009	DATE - 10/16/09	REVISED -

benesch

**STATE OF ILLINOIS
DEPARTMENT OF TRANSPORTATION**

SIGNING PLAN	
STA 549+00 TO STA 564+00	
SCALE: 1"=50'	SHEET NO. 5 OF 26 SHEETS
STA. TO STA.	

F.A.I. RTE.	SECTION	COUNTY	TOTAL SHEETS	SHEET NO.
290	(3031.1, ETC., 383B)RS-5	COCK	413	307
FED. ROAD DIST. NO.		ILLINOIS FED. AID PROJECT		
		CONTRACT NO. 60G52		