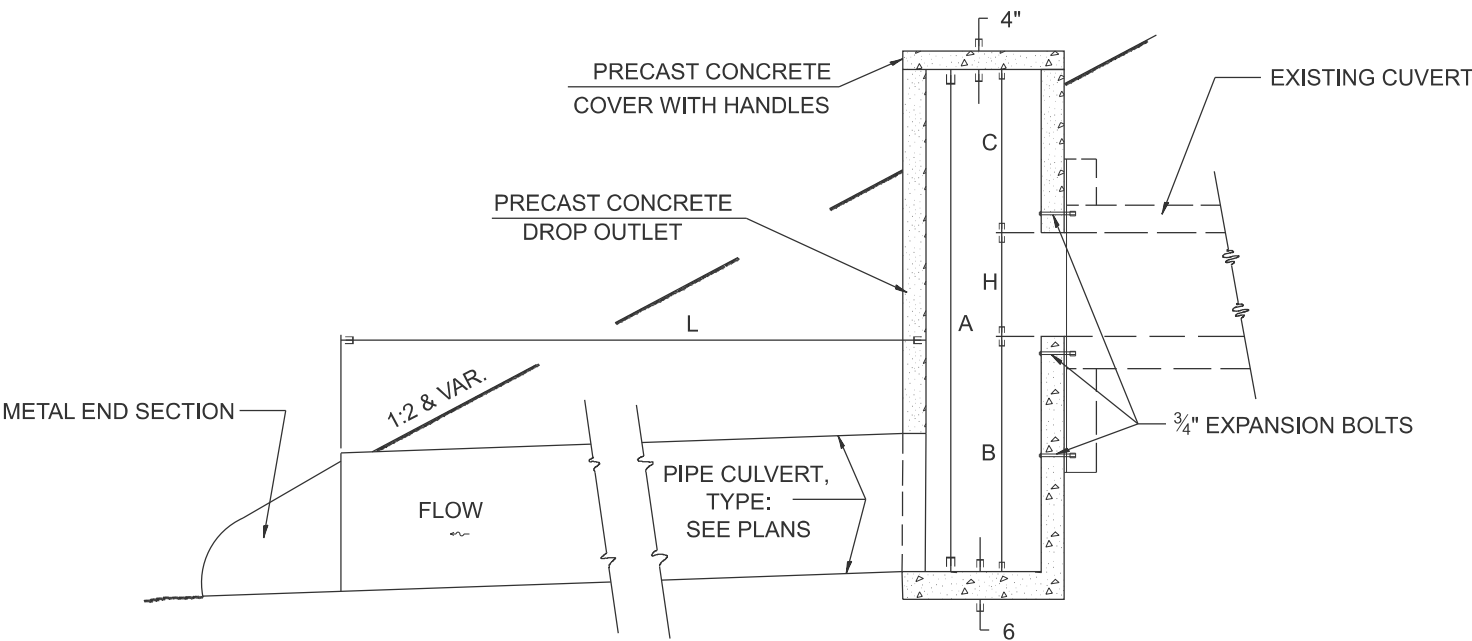
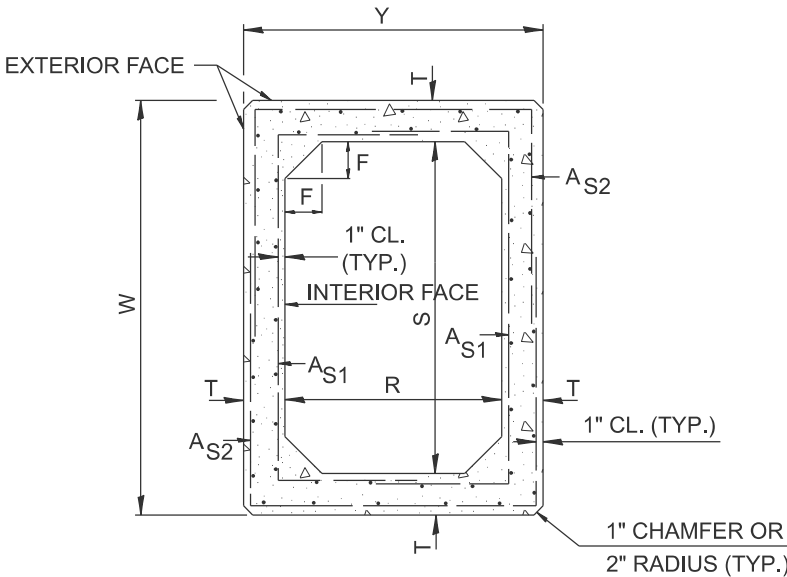


PLAN



SECTION A-A



SECTION THRU DROP OUTLET

DIMENSIONS

S x R ft	T	W	Y	F	A <sub>S1</sub>	A <sub>S2</sub>
3' x 3'	4"	3'-8"	3'-8"	4"	0.10	0.10
4' x 4'	5"	4'-10"	4'-10"	5"	0.12	0.12

GENERAL NOTES

- This work shall be performed in accordance with Section 503 of the Standard Specification.
- The terms AS1 & AS2 denotes the minimum required steel areas for reinforcement as specified in ASTM C 789. Reinforcement shall be welded wire fabric conforming to ASTM Specifications A185.

All slope ratios are expressed as units of vertical displacement to units of horizontal displacement (V:H).

All dimensions are in inches unless otherwise noted.

MODEL: D4-503101  
FILE NAME: c:\p\work\pwtol\illinois.gov\_thomas.cox\1055944\D4-503101.dgn

USER NAME = thomas.cox	DESIGNED -	REVISED -
	DRAWN -	REVISED -
	CHECKED -	REVISED -
PLOT DATE = 9/22/2025	DATE -	REVISED -

STATE OF ILLINOIS  
DEPARTMENT OF TRANSPORTATION

SPECIAL DROP OUTLET DETAIL

SCALE: NOT TO SCALE SHEET 000 OF SHEETS STA. TO STA.

F.A. RTE.	SECTION	COUNTY	TOTAL SHEETS	SHEET NO.
				0
DISTRICT 4 DETAIL NO. 503101		CONTRACT NO.		
ILLINOIS		FED. AID PROJECT		