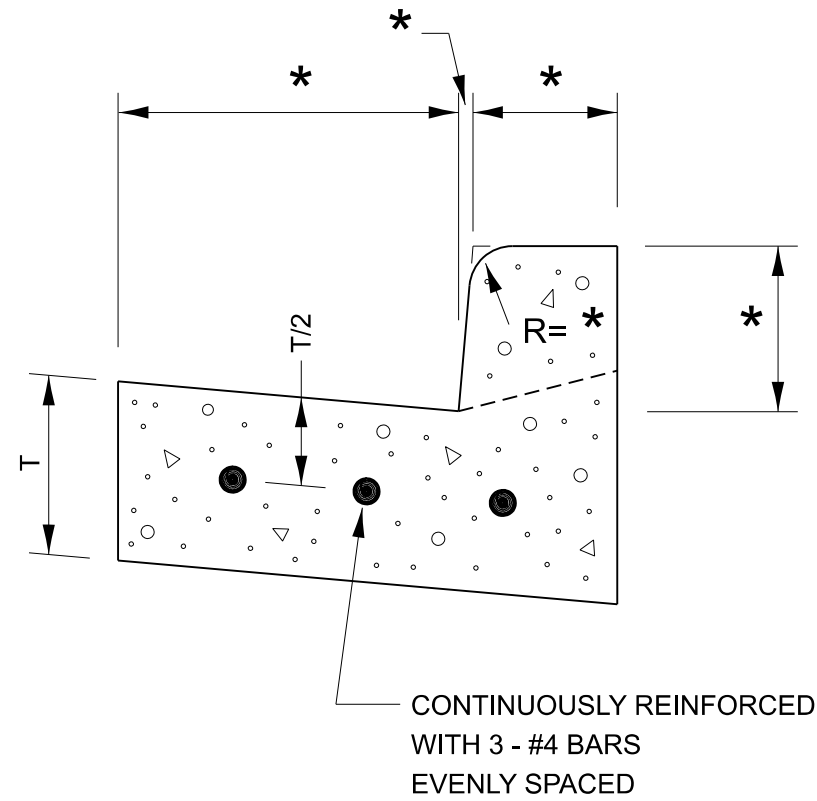


\* VARIES - SEE STANDARD 606001



## **REINFORCEMENT DETAIL**

## **FOR**

## **COMBINATION CONCRETE**

## **CURB AND GUTTER**

606-4

### DESIGNER NOTE:

TO BE USED WHEN CURB AND GUTTER  
CANNOT BE TIED TO THE EXISTING  
PAVEMENT - HMA PAVEMENTS OR  
PCC IN POOR CONDITION