

FOR INDEX OF SHEETS, SEE SHEET NO. 3

TRAFFIC DATA
2023- ADT 1250 WITH 10.4% TRUCKS

POSTED SPEED LIMITS
30-55 MPH

TOWNSHIPS
CUTLER

STATION EQUATIONS:

STA: 559+95.26 = 0+00.00

STA: 621+95.70 BK = 621+94.32 AH

STA: 581+67.79 BK = 581+74.18 AH

STA: 18+98.10 BK = 18+95.84 AH

STA: 52+00.60 BK = 51+98.46 AH

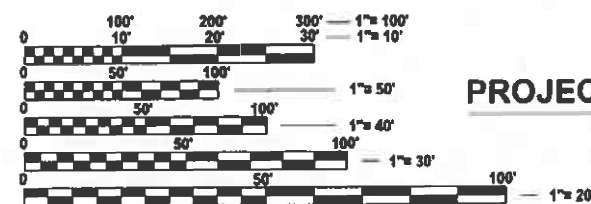
RAILROAD OMISSIONS

STA: 643+70.03 TO STA: 643+80.77

STA: 0+84.2 TO STA: 0+92.2

RAILROAD OMISSION
643+70.03 TO 643+80.77

PROJECT BEGINS: (IL 4)
STA: 661+02



FULL SIZE PLANS HAVE BEEN PREPARED USING STANDARD ENGINEERING SCALES. REDUCED SIZED PLANS WILL NOT CONFORM TO STANDARD SCALES. IN MAKING MEASUREMENTS ON REDUCED PLANS, THE ABOVE SCALES MAY BE USED.

J.U.L.I.E.
JOINT UTILITY LOCATION INFORMATION FOR EXCAVATION
1-800-892-0123
OR 811

PROJECT ENGINEER: Nathan Taylor

CONTRACT NO. 78A82

STATE OF ILLINOIS
DEPARTMENT OF TRANSPORTATION

PROPOSED HIGHWAY PLANS

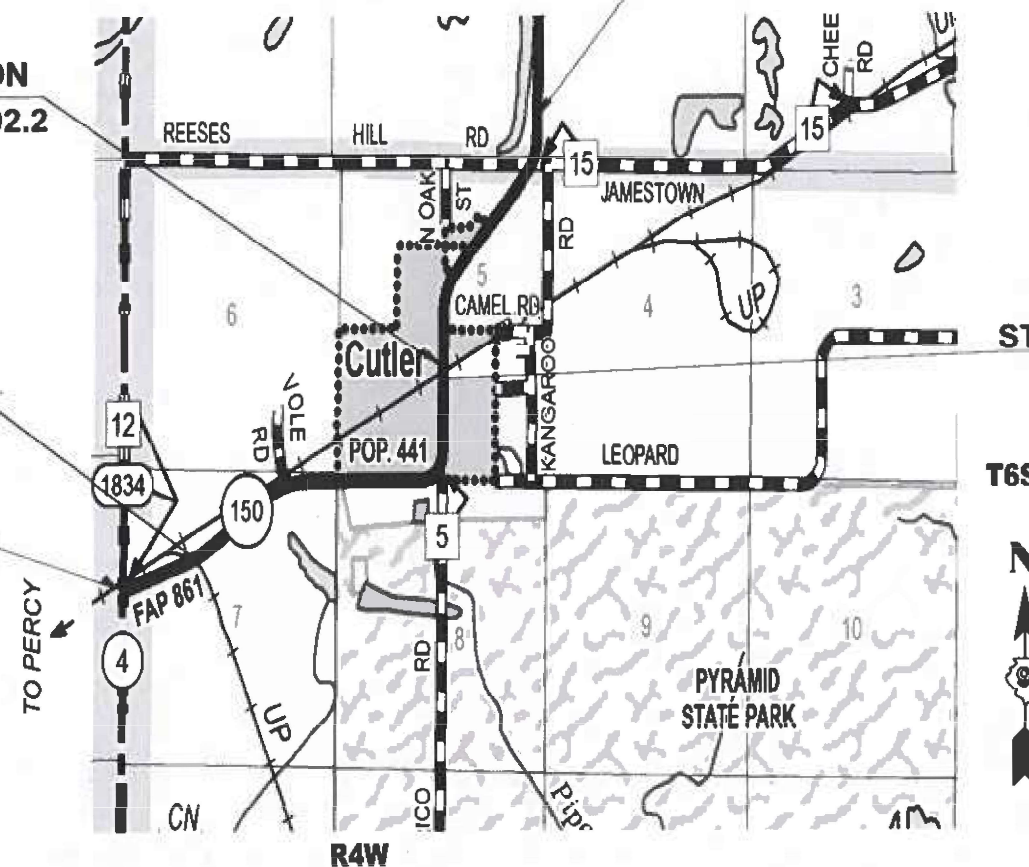
FAP ROUTE 861 (IL 150)
SECTION (111,X,566)RS-3
STP-F4ZM(094)
RESURFACING
PERRY COUNTY

C-99-109-24

PROJECT ENDS: (0.2 MILES NORTH OF REESES HILL RD)

STA: 57+68

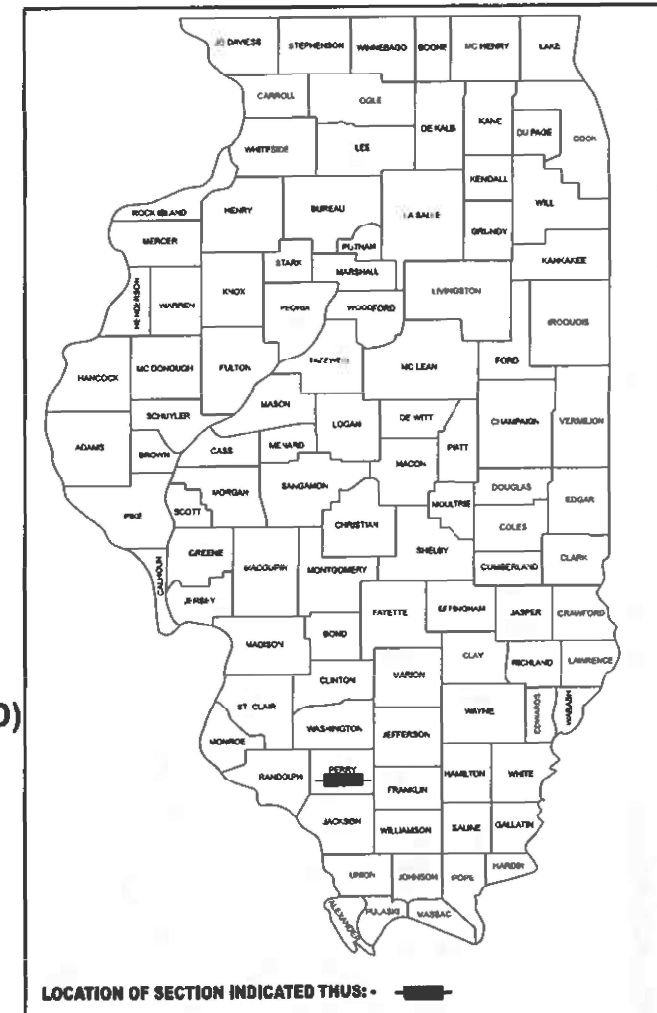
RAILROAD OMISSION
0+84.2 TO 0+92.2



GROSS LENGTH = 15,874 FT. = 3.01 MILE
NET LENGTH = 15,855 FT. = 3.00 MILE

F.A.P. RTE.	SECTION	COUNTY	TOTAL SHEETS	SHEET NO.
861	(111,X,566)RS-3	PERRY	18	1
		ILLINOIS	CONTRACT NO. 78A82	

D-99-061-24



T6S



STATE OF ILLINOIS
DEPARTMENT OF TRANSPORTATION

SUBMITTED August 15 20 24
Rick H. Brown
REGIONAL ENGINEER
October 4, 2024
Scott A. Elk
ENGINEER OF DESIGN AND ENVIRONMENT
October 4, 2024
James J. G...
DIRECTOR OF HIGHWAYS PROJECT IMPLEMENTATION

PRINTED BY THE AUTHORITY
OF THE STATE OF ILLINOIS

MODEL: 78A82-002-1 [Sheet]
FILE NAME: c:\new_work\newdo\taylor\mtd\0690522\078A82-SHA-Cover_Sig.dgn

USER NAME	▪ Nathan Taylor
PLOT DATE	▪ 8/12/2024

DESIGNED	-
DRAWN	-
CHECKED	-
DATE	-

REVISED	-
REVISED	-
REVISED	-
REVISED	-

STATE OF ILLINOIS
DEPARTMENT OF TRANSPORTATION

SIGNATURE SHEET

SCALE: SHEET OF 18 SHEETS STA. TO STA.

F.A.P. RTE.	SECTION	COUNTY	TOTAL SHEETS	SHEET NO.
861	(111.X.566)RS-3	PERRY	18	2
ILLINOIS FED. AID PROJECT CONTRACT NO. 78A82				

Prepared By: 
DISTRICT STUDIES & PLANS ENGINEER

Examined By: 
DISTRICT LAND ACQUISITION ENGINEER

Examined By: 
DISTRICT PROGRAM DEVELOPMENT ENGINEER

Examined By: 
DISTRICT OPERATIONS ENGINEER

Examined By: 
DISTRICT PROJECT IMPLEMENTATION ENGINEER

Examined By: 
DISTRICT CONSTRUCTION ENGINEER

Examined By: 
DISTRICT MATERIALS ENGINEER

GENERAL NOTES

- 1

FACTORS USED FOR ESTIMATING PLAN QUANTITIES ARE AS FOLLOWS AND SHALL NOT BE USED FOR THE BASIS OF FINAL QUANTITIES:
- ALL HOT MIX ASPHALT

2.016 TONS/CU. YD.
- ALL AGGREGATE

2.05 TONS/CU. YD.
- 2

THE ALGEBRAIC DIFFERENCE BETWEEN THE PAVEMENT AND SHOULDER SLOPES SHALL NOT EXCEED 10%.
THE SHOULDER ON THE OUTSIDE OF SUPERELEVATED CURVES SHALL BE FLATTENED ACCORDINGLY.
- 3

THE QUANTITY OF SHORT TERM PAVEMENT MARKING SHOWN IN THE PLANS IS BASED ON ONE APPLICATION EACH FOR THE HMA SURFACE REMOVAL, BINDER COURSE, AND SURFACE COURSE
- HMA RESURFACING SHALL BE PLACED IN A SEQUENCE THAT WILL MINIMIZE THE TIME THE CENTERLINE EDGE IS EXPOSED TO TRAFFIC. WHEN AT THE END OF A DAY'S OPERATION THE EXPOSED CENTERLINE EDGE IS GREATER THAN 2,000 FT, THE CONTRACTOR SHALL BE REQUIRED TO PAVE IN THE ADJACENT LANE ON THE FOLLOWING WORK DAY. PRIOR TO WINTER SHUTDOWN, RESURFACING ON ADJACENT LANES IS TO BE BROUGHT UP TO THE SAME ELEVATION.
- 5

LONGITUDINAL JOINT SEALANT SHALL BE PLACED UNDER THE HMA SURFACE COURSE
- 6

WHEN SHOULDER RESURFACING OF 6 FEET OR LESS IS ALLOWED TO BE PLACED SIMULTANEOUSLY WITH THE ADJACENT TRAFFIC LANE, THE MAINLINE QUALITY MANAGEMENT PROGRAM WILL BE ENFORCED FOR THE MAINLINE AND SHOULDERS
- 7

VIBRATORY ROLLERS WILL NOT BE ALLOWED WITHIN THE CORPORATE LIMITS OF CUTLER
- 8

INCIDENTAL HOT-MIX ASPHALT SURFACING SHALL BE PAVED IN A SEPARATE OPERATION FROM THE MAINLINE PAVEMENT
- 9

COMMITMENTS: NONE

INDEX OF SHEETS

SHEET NO	DESCRIPTION
1	COVER SHEET
2	SIGNATURE SHEET
3	INDEX OF SHEETS, HIGHWAY STANDARDS, GENERAL NOTES, MTD RESTRICTIONS, LIST OF COMMITMENTS
4	HMA MIXTURE TABLES
5-7	SUMMARY OF QUANTITIES
8-10	TYPICAL SECTIONS: IL 149
11-16	SCHEDULE OF QUANTITIES
17-18	DETAIL SHEETS

HIGHWAY STANDARDS

- 000001-08 STANDARD SYMBOLS, ABBREVIATIONS AND PATTERNS
- 001001-02 AREAS OF REINFORCEMENT BARS
- 001006 DECIMAL OF AN INCH AND OF A FOOT
- 420001-10 PAVEMENT JOINTS
- 442201-03 CLASS C & D PATCHES
- 701001-02 OFF-ROAD OPERATIONS, 2L, 2W, MORE THAN 15 FT AWAY
- 701006-05 OFF-ROAD OPERATIONS, 2L, 2W, 15 FT TO 24 IN FROM PAVEMENT EDGE
- 701011-04 OFF-ROAD MOVING OPERATIONS, 2L, 2W, DAY ONLY
- 701201-05 LANE CLOSURE, 2L, 2W, DAY ONLY, FOR SPEEDS 45 MPH OR MORE
- 701301-04 LANE CLOSURE, 2L, 2W, SHORT TIME OPERATIONS
- 701306-04 LANE CLOSURE, 2L, 2W, SLOW MOVING OPERATIONS DAY ONLY, FOR SPEEDS 45 MPH OR MORE
- 701311-03 LANE CLOSURE, 2L, 2W, MOVING OPERATIONS - DAY ONLY
- 701336-07 LANE CLOSURE, 2L, 2W, WORK AREAS IN SERIES, FOR SPEEDS 45MPH OR MORE
- 701501-06 URBAN LANE CLOSURE, 2L, 2W, UNDIVIDED
- 701901-09 TRAFFIC CONTROL DEVICES
- 780001-05 TYPICAL PAVEMENT MARKINGS
- 781001-04 TYPICAL APPLICATIONS RAISED REFLECTIVE PAVEMENT MARKERS

MTD CROSSING RESTRICTIONS TABLE

SN ROUTE (IL 3)	EXISTING FILL HEIGHT OVER BOX CULVERT	THICKNESS OF EXISTING PAVEMENT OVER BOX CULVERT	MAXIMUM GROSS WEIGHT RESTRICTIONS	MTD CROSSING RESTRICTIONS
	FOOT	FOOT	TONS	
SN 073-7040	NA	NA	37	EMPTY

REV - MS

MODEL: 78A82-002 [Sheet]
FILE NAME: c:\pw\work\pwt\illinois\ondr\0980522\0978A82-Sh1B-Index_GenNotes.dgn

	USER NAME = Nathan.Taylor	DESIGNED -	REVISED -	STATE OF ILLINOIS DEPARTMENT OF TRANSPORTATION	INDEX OF SHEETS, HIGHWAY STANDARDS, GENERAL NOTES, MTD RESTRICTIONS, LIST OF COMMITMENTS	F.A.P RTE.	SECTION	COUNTY	TOTAL SHEETS	SHEET NO.
		DRAWN -	REVISED -			861	(111,X,566)RS-3	PERRY	18	3
		CHECKED -	REVISED -			CONTRACT NO. 78A82				
	PLOT DATE = 8/16/2024	DATE -	REVISED -			ILLINOIS FED. AID PROJECT				
	SCALE:		SHEET OF 18 SHEETS			STA.		TO STA.		

The following HMA mixture requirements are applicable for this project

Location(s):	Hot-Mix Asphalt Surface Course, Incidental Surfacing
Mixture Use(s):	Hot-Mix Asphalt Surface Course, Mix C, N70
PG:	PG64-22
Design Air Voids:	4.0%, 70 Gyration Design
Mixture Composition:	IL-9.5 mm
Friction Aggregate:	Mix C
Mixture Weight:	112 lbs/sq yd/in
Quality Management Program:	QCP
Sublot Size:	1,000 tons
Material Transfer Device (Required?)	Yes - Surface Course Only

Location(s):	Hot-Mix Asphalt Surface Course, Incidental Surfacing
Mixture Use(s):	Hot-Mix Asphalt Surface Course, Mix C, N70
PG:	PG64-22
Design Air Voids:	4.0%, 70 Gyraton Design
Mixture Composition:	IL-9.5 mm
Friction Aggregate:	Mix C
Mixture Weight:	112 lbs/sq yd/in
Quality Management Program:	QCP
Sublot Size:	1,000 tons
Material Transfer Device (Required?)	Yes - Surface Course Only

Location(s):	Hot-Mix Asphalt Binder Course
Mixture Use(s):	Hot-Mix Asphalt Binder Course, IL-9.5 FG, N70
PG:	PG64-22
Design Air Voids:	4.0%, 70 Gyratation Design
Mixture Composition:	IL-9.5 mm FG
Friction Aggregate:	None
Mixture Weight:	112 lbs/sq yd/in
Quality Management Program:	QCP
Sublot Size:	1,000 tons
Material Transfer Device (Required?)	Yes

Location(s):	Hot-Mix Asphalt Shoulders
Mixture Use(s):	Hot-Mix Asphalt Surface Course, Mix C, N30
PG:	PG64-22
Design Air Voids:	4.0%, 30 Gyrations Design
Mixture Composition:	IL-9.5 mm
Friction Aggregate:	Mix C
Mixture Weight:	112 lbs/sq yd/in
Quality Management Program:	QC/QA
Sublot Size:	3,000 tons
Material Transfer Device (Required?)	No

SUMMARY OF QUANTITIES

COUNTY:	PERRY COUNTY
ROUTE:	FAP 861
FUNDING:	80% FEDERAL 20% STATE
LOCATION:	RURAL
TOTAL QUANTITY	ROADWAY
	0005

CODE NUMBER	ITEM DESCRIPTION	UNIT	TOTAL QUANTITY	
40600290	BITUMINOUS MATERIALS (TACK COAT)	POUND	29,769	29,769
40600370	LONGITUDINAL JOINT SEALANT	FOOT	15,857	15,857
40600982	HOT-MIX ASPHALT SURFACE REMOVAL - BUTT JOINT	SQ YD	1,082	1,082
40600990	TEMPORARY RAMP	SQ YD	886	886
40602970	HOT-MIX ASPHALT BINDER COURSE, IL-9.5FG, N70	TON	2,998	2,998
40604052	HOT-MIX ASPHALT SURFACE COURSE, IL-9.5, MIX "C", N70	TON	3,772	3,772
40800050	INCIDENTAL HOT-MIX ASPHALT SURFACING	TON	263	263
44000155	HOT-MIX ASPHALT SURFACE REMOVAL, 1 1/2"	SQ YD	34,642	34,642
44000160	HOT-MIX ASPHALT SURFACE REMOVAL, 2 3/4"	SQ YD	9,602	9,602
44201377	CLASS C PATCHES, TYPE II, 12 INCH	SQ YD	346	346
44201381	CLASS C PATCHES, TYPE III, 12 INCH	SQ YD	48	48
44201383	CLASS C PATCHES, TYPE IV, 12 INCH	SQ YD	27	27
48102100	AGGREGATE WEDGE SHOULDER, TYPE B	TON	290	290

MODEL: soc-1 [Sheet]
FILE NAME: c:\p\work\pwt\tdtaylor\mcd\0990522\0978A82-ShC-Soc.dgn

	USER NAME = Nathan.Taylor	DESIGNED -	REVISED -	STATE OF ILLINOIS DEPARTMENT OF TRANSPORTATION	SUMMARY OF QUANTITIES			F.A.P RTE.	SECTION	COUNTY	TOTAL SHEETS	SHEET NO.
		DRAWN -	REVISED -					861	(111,X,566)RS-3	PERRY	18	5
		CHECKED -	REVISED -					CONTRACT NO. 78A82				
	PLOT DATE = 8/16/2024	DATE -	REVISED -		SCALE:	SHEET	OF 18 SHEETS	STA.	TO STA.	ILLINOIS FED. AID PROJECT		

SUMMARY OF QUANTITIES - CONT

CODE NUMBER	ITEM DESCRIPTION	UNIT	TOTAL QUANTITY	COUNTY:	PERRY COUNTY
				ROUTE:	FAP 861
				FUNDING:	80% FEDERAL 20% STATE
				LOCATION:	RURAL
					ROADWAY
					0005
48203100	HOT-MIX ASPHALT SHOULDERS	TON	66		66
67000400	ENGINEER'S FIELD OFFICE, TYPE A	CAL MO	3		3
67100100	MOBILIZATION	L SUM	1		1
70100450	TRAFFIC CONTROL AND PROTECTION, STANDARD 701201	L SUM	1		1
70100460	TRAFFIC CONTROL AND PROTECTION. STANDARD 701306	L SUM	1		1
70100600	TRAFFIC CONTROL AND PROTECTION, STANDARD 701336	L SUM	1		1
70102620	TRAFFIC CONTROL AND PROTECTION, STANDARD 701501	L SUM	1		1
70107025	CHANGEABLE MESSAGE SIGN	CAL DA	42		42
70300100	SHORT TERM PAVEMENT MARKING	FOOT	10239		10239
70300150	SHORT TERM PAVEMENT MARKING REMOVAL	SQ FT	3413		3413
70300211	TEMPORARY PAVEMENT MARKING LETTERS AND SYMBOLS - PAINT	SQ FT	481		481
70300221	TEMPORARY PAVEMENT MARKING - LINE 4"- PAINT	FOOT	51572		51572
70300281	TEMPORARY PAVEMENT MARKING - LINE 24"- PAINT	FOOT	207		207

MODEL: snc-2 [Sheet]
FILE NAME: c:\p\work\pwt\tdtaylor\pmd\cd990522\DS78A82-SnC-SsQ.dgn

	USER NAME = Nathan.Taylor	DESIGNED -	REVISED -	STATE OF ILLINOIS DEPARTMENT OF TRANSPORTATION	SUMMARY OF QUANTITIES			F.A.P RTE.	SECTION	COUNTY	TOTAL SHEETS	SHEET NO.
		DRAWN -	REVISED -					861	(111,X,566)RS-3	PERRY	18	6
		CHECKED -	REVISED -					CONTRACT NO. 78A82				
	PLOT DATE = 8/15/2024	DATE -	REVISED -		SCALE:	SHEET	OF 18 SHEETS	STA.	TO STA.	ILLINOIS FED. AID PROJECT		

SUMMARY OF QUANTITIES - CONT

COUNTY:	PERRY COUNTY
ROUTE:	FAP 861
FUNDING:	80% FEDERAL 20% STATE
LOCATION:	RURAL
TOTAL QUANTITY	ROADWAY
	0005

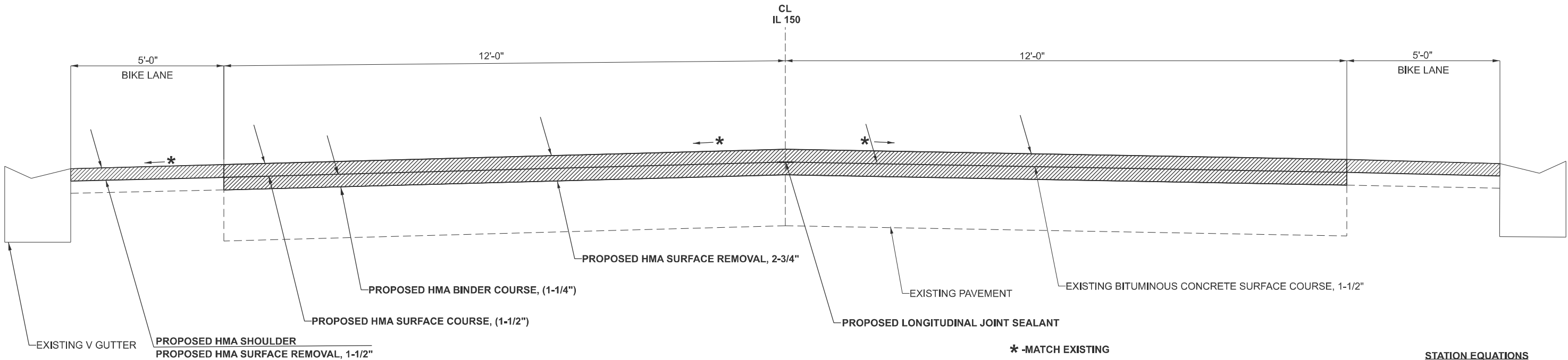
CODE NUMBER	ITEM DESCRIPTION	UNIT	TOTAL QUANTITY	
* 78001100	PAINT PAVEMENT MARKING - LETTERS AND SYMBOLS	SQ FT	481	481
* 78001110	PAINT PAVEMENT MARKING - LINE 4"	FOOT	51572	51572
* 78001180	PAINT PAVEMENT MARKING - LINE 24"	FOOT	207	207
* 78100100	RAISED REFLECTIVE PAVEMENT MARKER	EACH	224	224
78300200	RAISED REFLECTIVE PAVEMENT MARKER REMOVAL	EACH	224	224
78300201	PAVEMENT MARKING REMOVAL - GRINDING	SQ FT	18095	18095
X4401198	HOT-MIX ASPHALT SURFACE REMOVAL, VARIABLE DEPTH	SQ YD	134	134
Z0034105	MATERIAL TRANSFER DEVICE	TON	6770	6770
Z0048665	RAILROAD PROTECTIVE LIABILITY INSURANCE	L SUM	1	1

* SPECIALTY ITEM

MODEL: S003 [Sheet]
FILE NAME: c:\p\work\pwt\tdtaylor\mcd\0990522\078A82-ShrC-S00.dgn

	USER NAME = Nathan.Taylor	DESIGNED -	REVISED -	STATE OF ILLINOIS DEPARTMENT OF TRANSPORTATION	SUMMARY OF QUANTITIES			F.A.P RTE.	SECTION	COUNTY	TOTAL SHEETS	SHEET NO.
		DRAWN -	REVISED -					861	(111,X,566)RS-3	PERRY	18	7
		CHECKED -	REVISED -					CONTRACT NO. 78A82				
	PLOT DATE = 8/16/2024	DATE -	REVISED -		SCALE:	SHEET	OF 18 SHEETS	STA.	TO STA.	ILLINOIS FED. AID PROJECT		

MODEL: hvd_1 [Sheet]
FILE NAME: c:\p\work\pwt\tdtaylor\mcd\0990522\078A82-Shld-Typicals.dgn

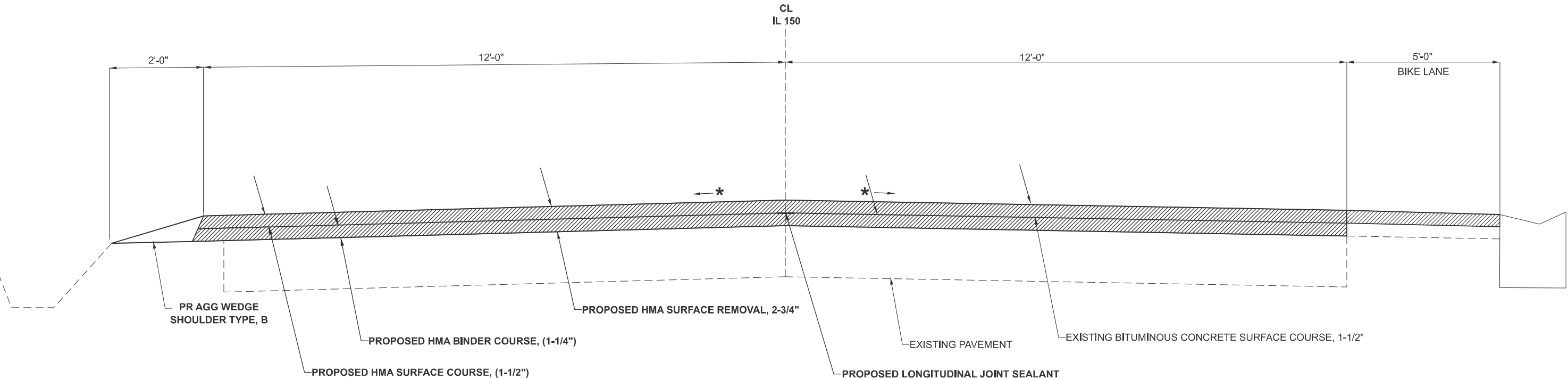


TO BE USED:
STA: 559+95.26 TO STA: 570+70
STA: 0+00 TO STA: 7+80

* -MATCH EXISTING

STATION EQUATIONS
STA: 559+95.26 = STA: 0+00

RAILROAD OMISSION
STA: 0+84.2 TO STA: 0+92.2



TO BE USED:
STA: 570+70 TO STA: 572+88.90

* -MATCH EXISTING

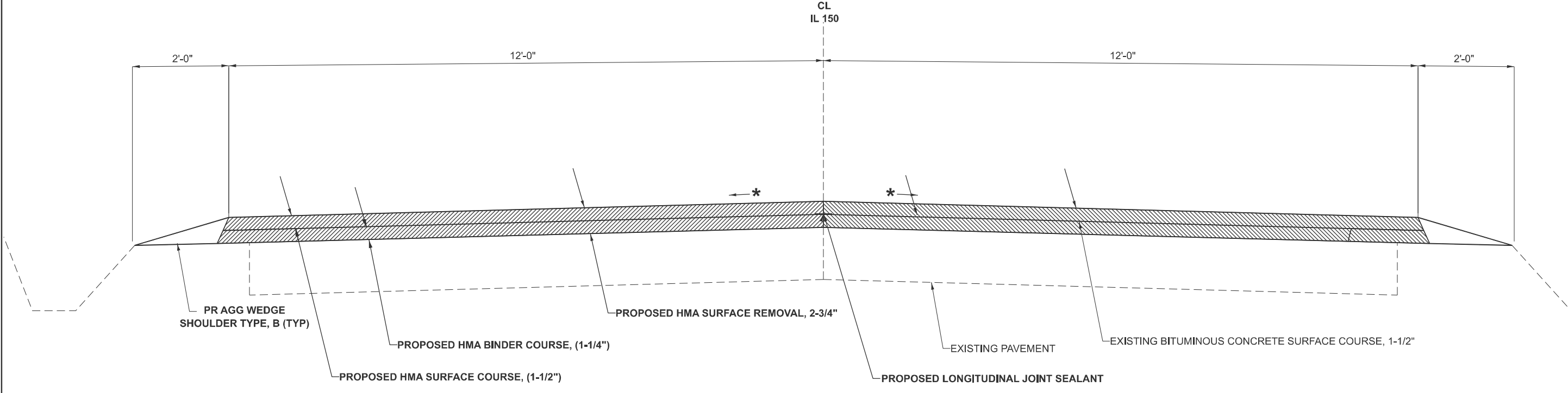
	USER NAME = Nathan.Taylor	DESIGNED -	REVISED -
		DRAWN -	REVISED -
		CHECKED -	REVISED -
	PLOT DATE = 8/15/2024	DATE -	REVISED -

STATE OF ILLINOIS
DEPARTMENT OF TRANSPORTATION

TYPICAL SECTIONS
IL 150

SCALE: SHEET OF 18 SHEETS STA. TO STA.

F.A.P. RTE.	SECTION	COUNTY	TOTAL SHEETS	SHEET NO.
861	(111,X,566)RS-3	PERRY	18	8
CONTRACT NO. 78A82				
ILLINOIS FED. AID PROJECT				

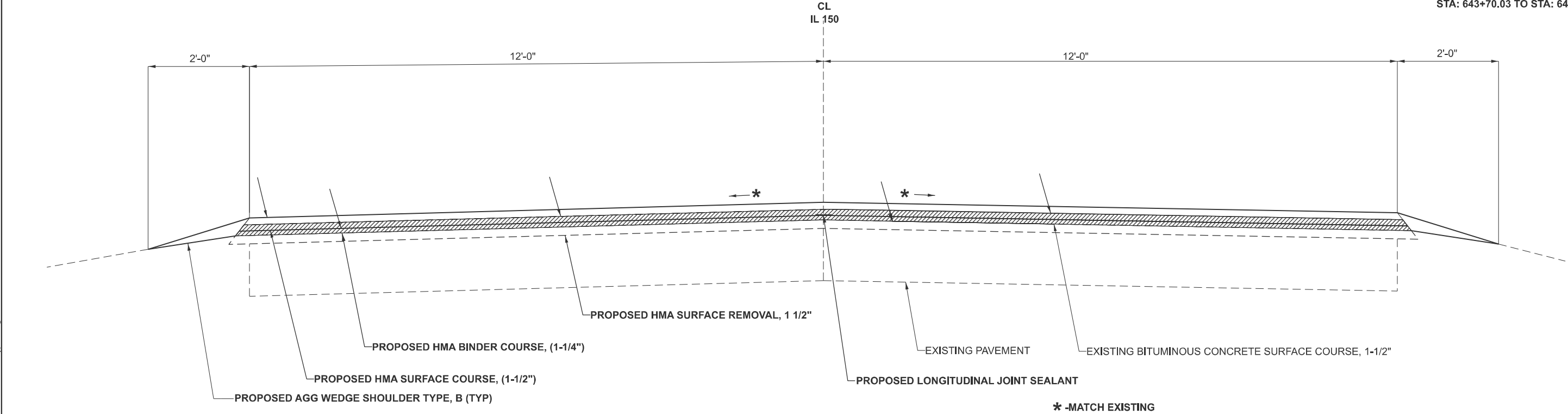


TO BE USED:
STA: 572+88.90 TO STA: 581+67.79

*** -MATCH EXISTING**

STATION EQUATIONS
STA: 581+67.79 BK = 581+74.18 AH
STA: 18+98.10 BK = 18+95.84 AH
STA: 52+00.60 BK = 51+68.46 AH

RAILROAD OMISSION
STA: 643+70.03 TO STA: 643+80.77

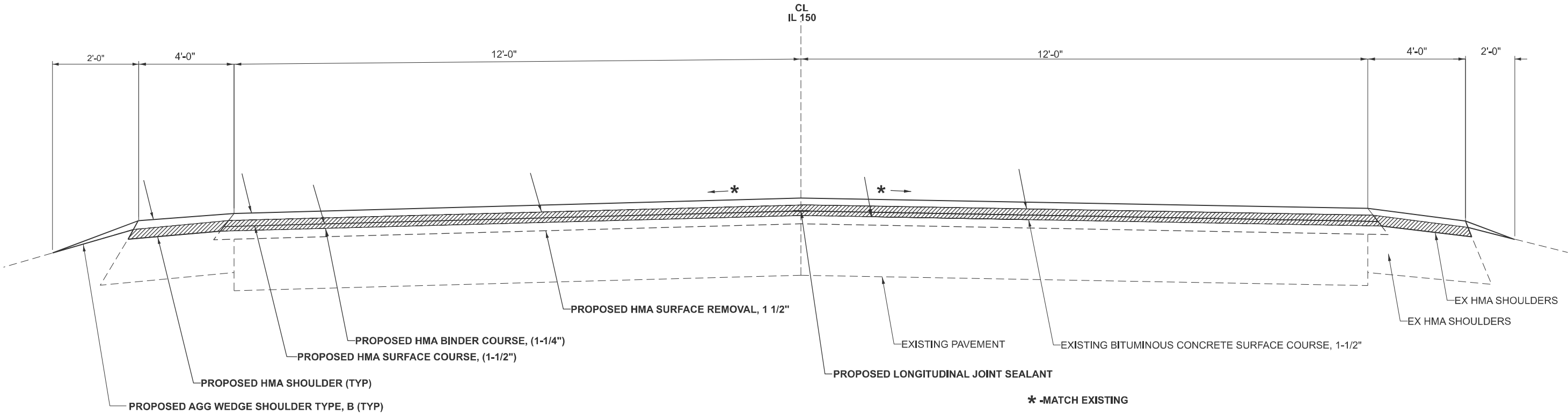


TO BE USED:
STA: 581+74.18 TO STA: 656+22
STA: 14+35 TO STA: 57+68

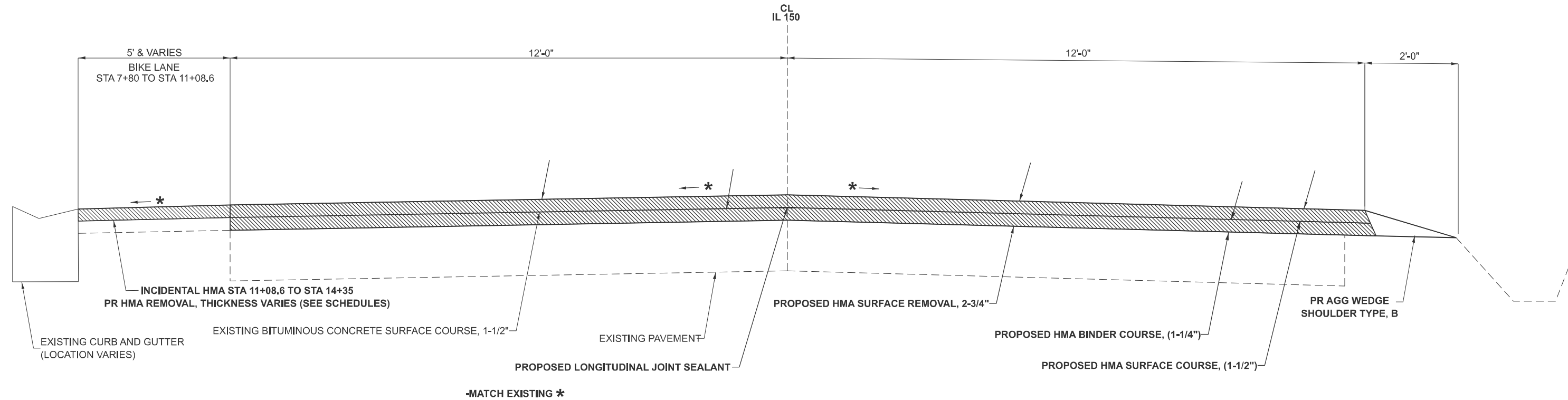
*** -MATCH EXISTING**

MODEL: hvd_2 (Sheet)
FILE NAME: c:\p\work\pilot\taylor\mcd\990522\078A82-Shd-Typicals.dgn

	USER NAME = Nathan.Taylor	DESIGNED -	REVISED -	STATE OF ILLINOIS DEPARTMENT OF TRANSPORTATION	TYPICAL SECTIONS IL 150		F.A.P RTE.	SECTION	COUNTY	TOTAL SHEETS	SHEET NO.
		DRAWN -	REVISED -				861	(111,X,566)RS-3	PERRY	18	9
		CHECKED -	REVISED -				CONTRACT NO. 78A82				
	PLOT DATE = 8/16/2024	DATE -	REVISED -				ILLINOIS FED. AID PROJECT				
				SCALE:		SHEET	OF 18	SHEETS	STA.	TO STA.	



TO BE USED:
STA: 656+22 TO STA: 661+02



TO BE USED:
STA: 7+80 TO STA: 14+35

MODEL: typ_3 [Sheet]
FILE NAME: c:\p\work\pwtaylor\mcd\090522\078A82-Typicals.dgn

USER NAME	= Nathan.Taylor	DESIGNED	-	REVISED	-
		DRAWN	-	REVISED	-
		CHECKED	-	REVISED	-
PLOT DATE	= 8/16/2024	DATE	-	REVISED	-

STATE OF ILLINOIS
DEPARTMENT OF TRANSPORTATION

TYPICAL SECTIONS
IL 150

SCALE: SHEET OF 18 SHEETS STA. TO STA.

F.A.P. RTE.	SECTION	COUNTY	TOTAL SHEETS	SHEET NO.
861	(111.X,566)RS-3	PERRY	18	10
CONTRACT NO. 78A82				
ILLINOIS FED. AID PROJECT				

PATCHING SCHEDULE

LOCATION NB IL 150		AREA (FOR INFORMATION ONLY)	CLASS C PATCHES, TYPE II, 12 INCH	CLASS C PATCHES, TYPE III, 12 INCH
L	W			
		SQ YD	SQ YD	SQ YD
4	12	5.33	6	.
4	12	5.33	6	.
4	12	5.33	6	.
4	12	5.33	6	.
4	12	5.33	6	.
12	12	16.00		16.
10	12	13.33	14	.
10	12	13.33	14	.
4	12	5.33	6	.
4	12	5.33	6	.
4	12	5.33	6	.
4	25	11.11	12	.
4	12	5.33	6	.
6	12	8.00	8	.
12	12	16.00		16.
6	12	8.00	8	.
4	12	5.33	6	.
4	12	5.33	6	.
4	12	5.33	6	.
4	12	5.33	6	.
4	12	5.33	6	.
4	12	5.33	6	.
4	13	5.78	6	.
4	14	6.22	7	.
6	15	10.00	10	.
6	16	10.67	11	.
SUBTOTALS:			180	32

PATCHING SCHEDULE

LOCATION SB IL 150		AREA (FOR INFORMATION ONLY)	CLASS C PATCHES, TYPE II 12 INCH	CLASS C PATCHES, TYPE III 12 INCH	CLASS C PATCHES, TYPE IV 12 INCH
L	W				
		SQ YD	SQ YD	SQ YD	SQ YD
4	12	5.33	6	.	.
10	12	13.33	14	.	.
4	12	5.33	6	.	.
20	12	26.67		.	27.
4	12	5.33	6	.	.
4	12	5.33	6	.	.
4	12	5.33	6	.	.
4	12	5.33	6	.	.
4	12	5.33	6	.	.
10	12	13.33	14	.	.
4	12	5.33	6	.	.
4	12	5.33	6	.	.
4	12	5.33	6	.	.
4	12	5.33	6	.	.
4	12	5.33	6	.	.
4	12	5.33	6	.	.
4	12	5.33	6	.	.
12	12	16.00		16.	.
6	12	8.00	8	.	.
4	12	5.33	6	.	.
4	12	5.33	6	.	.
4	12	5.33	6	.	.
4	12	5.33	6	.	.
4	12	5.33	6	.	.
4	12	5.33	6	.	.
4	12	5.33	6	.	.
6	12	8.00	8	.	.
6	12	8.00	8	.	.
SUBTOTALS:			166	16	27
TOTALS:			346	48	27

MODEL: patching [Sheet]
FILE NAME: c:\p\work\pw\tdtaylor\mcd\090522\078A82-SHE-Schedules.dgn

HMA PAVEMENT SCHEDULE

LOCATION STATION TO STATION				EXIST. PAVEMENT LENGTH (INFO ONLY)	EXIST. PAVEMENT WIDTH (INFO ONLY)	TEMPORARY RAMPS	HMA BINDER CSE IL-9.5FG, N70 (1 1/4")	HMA SURFACE CSE MIX C, N70 (1 1/2")	MATERIAL TRANSFER DEVICE	HMA SURFACE REMOVAL, 1 1/2"	HMA SURFACE REMOVAL, 2-3/4"	HMA SURFACE REMOVAL, VARIABLE DEPTH	LONGITUDINAL JOINT SEALANT	BITUMINOUS MATERIALS (TACK COAT)
				FOOT	FOOT	SQ YD	TON	TON	TON	SQ YD	SQ YD	SQ YD	FOOT	POUND
IL 150 STATIONS PROCEEDING FROM SOUTH TO NORTH														
STA	661+02	TO	STA	643+80.77	1,721	24	28	326	388	714	4,590		1,721	3,099
STA	643+80.77	TO	STA	643+70.03	RAILROAD OMISSION									
STA	643+70.03	TO	STA	621+94.32	2,176	24	14	412	490	902	4,590		2,176	3,917
STA	621+94.32	TO	STA	621+95.70	STATION EQUATION									
STA	621+95.70	TO	STA	581+99.18	3,997	24		756	900	1,656	10,658		3,997	7,194
STA	581+99.18	TO	STA	581+74.18	25	24		5	6	11		67	25	45
STA	581+74.18	TO	STA	581+67.79	STATION EQUATION									
STA	581+67.79	TO	STA	572+88.90	879	24		167	198	365		2,344	879	1,583
STA	572+88.90	TO	STA	570+70	219	29		41	60	101	489	584	219	449
STA	570+70	TO	STA	559+95.26	1,075	34		201	342	543	244	2,866	1,075	2,472
STA	0+00	TO	STA	0+84.2	84	34	14	16	27	43	1,195	225	84	194
STA	0+84.2	TO	STA	0+92.2	RAILROAD OMISSION									
STA	0+92.2	TO	STA	7+80	688	34	14	129	219	348	765	1,835	688	1,582
STA	7+80.	TO	STA	11+08.60	329	29		62	89	151	183	877	329	674
STA	11+08.6	TO	STA	14+35.00	326	24		62	74	136		871	326	588
STA	14+35.	TO	STA	14+60.00	25	24		5	6	11		67	25	45
STA	14+60.	TO	STA	18+98.10	438	24		83	99	182	1,169		438	
STA	18+98.10	TO	STA	18+95.84	STATION EQUATION									
STA	18+95.84	TO	STA	52+00.60	3,305	24		625	745	1,370	8,813		3,305	5,949
STA	52+00.60	TO	STA	51+98.46	STATION EQUATION									
STA	51+98.46	TO	STA	57+68	570	24	14	108	129	237	1,519		570	1,026
PROJECT TOTALS						84		2,998	3,772	6,770	34,215	9,602	134	28,817

SHOULDER SCHEDULE

LOCATION STATION TO STATION				EXIST. PAVEMENT LENGTH (INFO ONLY)	HMA SHOULDERS	HMA SURFACE REMOVAL, 1-1/2"	HMA SHOULDER WIDTH (INFO ONLY)	BITUMINOUS MATERIALS (TACK COAT)	AGG SHOULDER WIDTH (INFO ONLY)	AGG WEDGE SHOULDER TY B
				FOOT	TON	SQ YD	FOOT	POUND	FOOT	TON
IL 150 STATIONS PROCEEDING FROM SOUTH TO NORTH										
STA	661+02	TO	STA	656+22.00	480	66	427	8	192	8
STA	656+22.00	TO	STA	643+80.77	1,241				4	20
STA	643+80.77	TO	STA	643+70.03	RAILROAD OMISSION					
STA	643+70.03	TO	STA	621+94.32	2,176				4	35
STA	621+94.32	TO	STA	621+95.70	STATION EQUATION					
STA	621+95.70	TO	STA	581+74.18	4,022				4	64
STA	581+74.18	TO	STA	581+67.79	STATION EQUATION					
STA	581+67.79	TO	STA	572+88.90	879				4	14
STA	572+88.90	TO	STA	570+70	219				2	2
STA	7+80.	TO	STA	11+08.60	329				2	3
STA	11+08.6	TO	STA	14+35.00	326				2	3
STA	14+35.	TO	STA	18+98.10	463				4	8
STA	18+98.1	TO	STA	18+95.84	STATION EQUATION					
STA	18+95.84	TO	STA	52+00.60	3,305				4	84
STA	52+00.60	TO	STA	51+98.46	STATION EQUATION					
STA	51+98.46	TO	STA	57+68	570				4	15
PROJECT TOTALS					66	427		192		256

MODEL: schedule pave (Sheet)
FILE NAME: c:\p\work\pilot\pilotmcd\p990522\078A82-SHE-Schedules.dgn

	USER NAME = Nathan.Taylor	DESIGNED -	REVISED -	STATE OF ILLINOIS DEPARTMENT OF TRANSPORTATION	PAVEMENT SCHEDULE			F.A.P. RTE.	SECTION	COUNTY	TOTAL SHEETS	SHEET NO.
		DRAWN -	REVISED -					861	(111,X,566)RS-3	PERRY	18	12
		CHECKED -	REVISED -		SCALE: SHEET OF 18 SHEETS STA. TO STA.			CONTRACT NO. 78A82				
	PLOT DATE = 8/15/2024	DATE -	REVISED -					ILLINOIS FED. AID PROJECT				

ENTRANCE SCHEDULE

LOCATION FAP 861 (IL 150)		ENT TYPE	EX. SURF	EOP	WIDTH 4' O/S	RDWY AREA	INCIDENTAL HMA SURF (1 1/2")	AGG WEDGE SHLDR, TYPE B	BIT. MAT. (TACK COAT)	TEMP RAMP
			FOR INFO PURPOSES ONLY							
			TYPE	FT	FT	SQ YD	TON	TON	POUND	SQ YD
ENTRANCES										
634+86	RT	PE	AGG	28	22	12	2	2	6	
633+90	RT	PE	AGG	16	11	6	1	1	3	
631+55	RT	PE	AGG	75	67	32	4	2	15	
605+50	LT	PE	HMA	73	73	33	8		30	
600+78	RT	PE	AGG	33	27	14	2	1	13	
559+21	RT	PE	AGG	22	17	9	2	1	9	
598+76	LT	PE	AGG	78	69	33	4	2	15	
596+15	RT	PE	AGG	31	26	13	2	1	6	
590+10	LT	PE	AGG	86	86	39	5	2	18	
582+59	LT	PE	AGG	44	44	20	3	1	9	
582+39	RT	PE	AGG	26	19	10	2	1	5	
581+42	LT	PE	AGG	93						42
581+15	RT	PE	AGG	21						10
573+40	LT	PE	HMA	26						12
572+75	LT	PE	HMA	25						12
572+71	LT	PE	HMA	44						20
564+60	RT	PE	AGG	18						8
FIRE DEPT	LT	CE	CONC	60						27
6+20	RT	CE	CONC	30						14
15+64	LT	PE	AGG	32	24	13	2	1	6	
18+00	LT	PE	AGG	36	25	14	2	1	7	
20+99	LT	PE	AGG	38	30	16	2	1	8	
22+73	LT	PE	AGG	56	56	25	3	1	12	
25+00	LT	PE	AGG	34	19	12	2	1	6	
26+38	RT	PE	AGG	44	34	18	3	1	9	
27+01	LT	PE	AGG	67	57	28	4	2	13	
27+39	RT	PE	AGG	41	28	16	2	1	8	
28+09	LT	PE	AGG	40	33	17	3	1	8	
29+50	LT	PE	AGG	27	20	11	2	1	5	
31+10	LT	PE	AGG	34	24	13	2	1	6	
33+40	LT	PE	AGG	32	23	13	2	1	6	
34+70	LT	PE	AGG	37	30	15	2	1	7	
35+25	RT	PE	AGG	57	46	23	3	1	11	
37+41	RT	PE	AGG	45	34	18	3	1	9	
38+93	RT	PE	AGG	43	43	20	3	1	9	
40+69	LT	PE	AGG	66	58	28	4	3	13	
IL 150 TOTAL							79	34	272	145

MODEL: ENTRANCE SCHEDULE-1 [Sheet]
FILE NAME: c:\p\work\pwtdottaylor\mcd\990522\0878A82-ShtE-Schedules.dgn

	USER NAME = Nathan.Taylor	DESIGNED -	REVISED -	STATE OF ILLINOIS DEPARTMENT OF TRANSPORTATION	ENTRANCE SCHEDULE			F.A.P RTE.	SECTION	COUNTY	TOTAL SHEETS	SHEET NO.
		DRAWN -	REVISED -					861	(111,X,566)RS-3	PERRY	18	13
		CHECKED -	REVISED -		SCALE: SHEET OF 18 SHEETS STA. TO STA.			CONTRACT NO. 78A82				
	PLOT DATE = 8/16/2024	DATE -	REVISED -					ILLINOIS FED. AID PROJECT				

SIDE ROAD SCHEDULE

LOCATION			EXIST. SURFACE	EOP WIDTH	WIDTH AT 15' OFFSET	ROADWAY AREA	TEMP RAMP	HMA SURFACE REMOVAL -BUTT JOINT	INCIDENTAL HMA SURFACING (3")	BIT. MAT. (TACK COAT)
			FOR INFO PURPOSE ONLY							
			SURF	(FT)	(FT)	(SQ YD)	(SQ YD)	(SQ YD)	(TON)	(POUNDS)
IL 150										
RT	616+46	VOLE	HMA	49	28	65	22	65	11	29
RT.	604+33	ROTTWEILER	HMA	80	50	109	36	109	19	49
LT.	575+75	TRICO RD	HMA	178	124	252	80	252	43	114
	570+06	5th ST	HMA	102			46			
	568+00	ALLEY	AGG	38			17			
	565+89	4th ST	HMA	88			40			
LT.	564+24	ALLEY	AGG	13			6			
	562+66	HEATHERINGTON ST	HMA	83			37			
	561+08	ALLEY	AGG	60			27			
LT.	1+25	RAILROAD ST	HMA	22			10			
	3+00	LINCOLN ST	HMA	60	52		27			
	4+56	MILL ST	HMA	84	50		38			
RT.	7+65	E 1ST ST	HMA	38			17			
LT.	7+82	W 1ST ST	HMA	42			19			
LT.	11+05	CENTER ST	HMA	43			20			
LT.	13+60	OAK ST	HMA	329		457	147	457	77	206
LT.	46+28	REESES HILL RD	OIL CHIP	48	22	59	22	59	10	27
RT	46+40	JAMESTOWN RD	OIL CHIP	103	65	140	46	140	24	63
IL 150 SIDE ROAD TOTALS							657	1,082	184	488

MODEL: SIDE ROAD SCHEDULE (Sheet)
FILE NAME: c:\p\work\pwtaylor\mcd\0990522\078A82-SHE-Schedules.dgn

	USER NAME = Nathan.Taylor	DESIGNED -	REVISED -	STATE OF ILLINOIS DEPARTMENT OF TRANSPORTATION	SIDE ROAD SCHEDULE			F.A.P RTE.	SECTION	COUNTY	TOTAL SHEETS	SHEET NO.
		DRAWN -	REVISED -					861	(111,X,566)RS-3	PERRY	18	14
		CHECKED -	REVISED -					CONTRACT NO. 78A82				
	PLOT DATE = 8/16/2024	DATE -	REVISED -		SCALE:	SHEET	OF 18 SHEETS	STA.	TO STA.	ILLINOIS FED.AID PROJECT		

PAVEMENT MARKING SCHEDULE

LOCATION STATION TO STATION				PAINT PAVEMENT MARKING					RAISED REFLECTIVE PAVEMENT MARKER	RAISED REFLECTIVE PAVEMENT MARKER REMOVAL	COMMENTS
				LINE - 4" WHITE	LINE - 4" YELLOW		LINE- 24" WHITE	LETTERS AND SYMBOLS			
SOLID	SOLID	SKIP - DASH	SOLID								
FOOT	FOOT	FOOT	FOOT	SQ FT	EACH	EACH					
IL 150											
STATIONS PROCEEDING FROM SOUTH TO NORTH											
STA	662+03	TO	STA 651+96.00	2,014	1,007	252	33		13	13	STOP BAR & NB NPZ
STA	651+96.00	TO	STA 643+80.77	1,480	1,630				11	11	NPZ
STA	647+44.00	TO	STA 646+91.00				24	65			RR SYMBOLS
STA	644+00.00	TO	STA 644+00.00				12				RR STOP BAR
STA	643+80.77	TO	STA 643+70.03	RAILROAD OMISSION							
STA	643+50.00	TO	STA 643+50.00				12				RR STOP BAR
STA	640+57.00	TO	STA 640+03.00				24	65			RR SYMBOLS
STA	643+70.03	TO	STA 643+56.00	28	28				1	1	NPZ
STA	643+56.00	TO	STA 632+39.00	2,234	1,117	279			14	14	SB NPZ
STA	632+39.00	TO	STA 628+95.00	688		86			5	5	
STA	628+95.00	TO	STA 621+94.32	1,401	701	175			9	9	NB NPZ
STA	621+95.70	TO	STA 617+51.00	889	445	111			6	6	NB NPZ
STA	617+51.00	TO	STA 615+09.00	484	484				4	4	NPZ
STA	615+09.00	TO	STA 603+60.00	2,298	1,149	287			15	15	SB NPZ
STA	603+60.00	TO	STA 590+87	2,546		318			16	16	
STA	590+87.00	TO	STA 581+74.18	1,826	913	228			12	12	NB NPZ
STA	581+67.79	TO	STA 579+80.00	376	188	47			3	3	NB NPZ
STA	579+80	TO	STA 575+30	900	900				6	6	NPZ
STA	569+74	TO	STA 569+74					23			BICYCLE PM W ARROW STA LT & RT
STA	575+30	TO	STA 568+79	1,302	651	163			9	9	SB NPZ
STA	566+15	TO	STA 566+15					23			BICYCLE PM W ARROW STA LT & RT
STA	565+55	TO	STA 565+55					23			BICYCLE PM W ARROW STA LT & RT
STA	562+97	TO	STA 562+97					23			BICYCLE PM W ARROW STA LT & RT
STA	562+45	TO	STA 562+45					23			BICYCLE PM W ARROW STA LT & RT
STA	568+79	TO	STA 561+11.00	1,536		192			10	10	
STA	561+11	TO	STA 559+95.26	231	116	29			2	2	NB NPZ
STA	0+00	TO	STA 0+84	168	84	21			2	2	NB NPZ
STA	560+05	TO	STA 560+57				34	65			RR SYMBOLS
STA	0+52	TO	STA 0+52				17				RR STOP BAR
STA	0+55	TO	STA 0+55					12			BICYCLE PM W ARROW STA LT
STA	0+84	TO	STA 0+92	RAILROAD OMISSION							
STA	1+26	TO	STA 1+26					12			BICYCLE PM W ARROW STA RT
STA	1+32	TO	STA 1+32				17				RR STOP BAR
STA	1+95	TO	STA 2+47				34	65			RR SYMBOLS
STA	0+92	TO	STA 3+29	474	237	59			3	3	SB NPZ
STA	3+29	TO	STA 8+42	1,026		128			7	7	
STA	4+18	TO	STA 4+18					23			BICYCLE PM W ARROW STA LT & RT
STA	5+00	TO	STA 5+00					23			BICYCLE PM W ARROW STA LT & RT
STA	7+51	TO	STA 7+51					12			BICYCLE PM W ARROW STA LT
STA	8+17	TO	STA 8+17					12			BICYCLE PM W ARROW STA LT
STA	8+42	TO	STA 15+11	1,338	669	167			9	9	NB NPZ
STA	10+73	TO	STA 10+73					12			BICYCLE PM W ARROW STA LT
STA	15+11	TO	STA 17+00	378	378				3	3	NPZ
STA	17+00	TO	STA 18+98	396	198	50			3	3	SB NPZ
STA	18+95.84	TO	STA 26+65	1,538	769	192			10	10	SB NPZ
STA	18+98	TO	STA 37+06	3,616		452			23	23	
STA	37+06	TO	STA 46+81	1,950	975	244			13	13	NB NPZ
STA	46+81	TO	STA 51+16	870	870				6	6	NPZ
STA	51+16	TO	STA 57+68	1,304	1,127	163			9	9	SB NPZ
TOTAL				51,572			207	481	224	224	

MODEL: marking schedule [Sheet]
FILE NAME: c:\p\work\illinois\tdm\dd0990522\078A82-SHE-Schedules.dgn

PLOT DATE = 8/16/2024	USER NAME = Nathan.Taylor	DESIGNED -	REVISED -	STATE OF ILLINOIS DEPARTMENT OF TRANSPORTATION	PAVEMENT MARKING SCHEDULE				F.A.P RTE.	SECTION	COUNTY	TOTAL SHEETS	SHEET NO.
		DRAWN -	REVISED -						861	(111,X,566)RS-3	PERRY	18	15
		CHECKED -	REVISED -						CONTRACT NO. 78A82				
		DATE -	REVISED -		SCALE:	SHEET	OF 18 SHEETS	STA.	TO STA.	ILLINOIS FED. AID PROJECT			

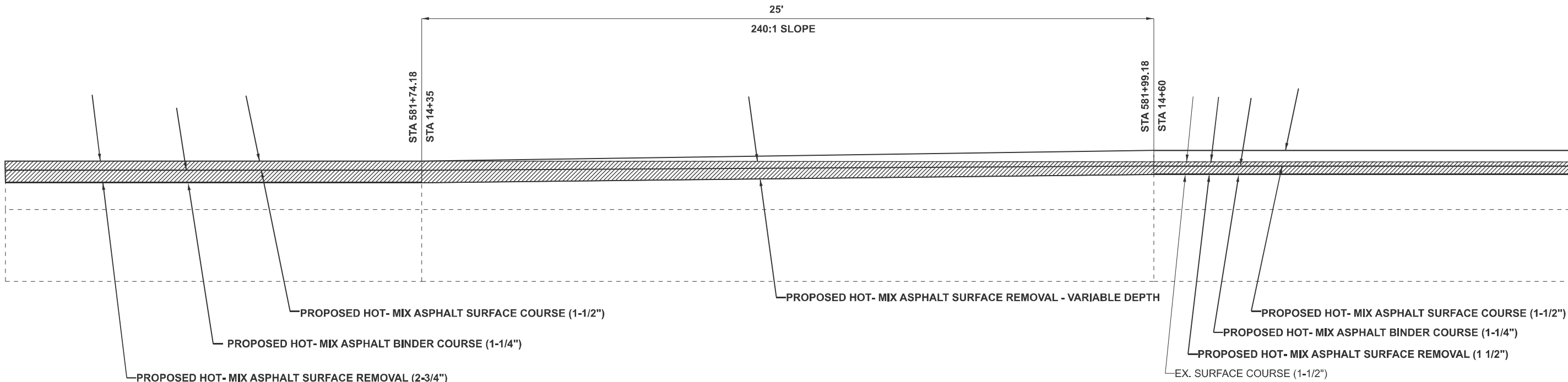
TEMPORARY PAVEMENT MARKING SCHEDULE

LOCATION STATION TO STATION					TEMPORARY PAVEMENT MARKING					PAVEMENT MARKING REMOVAL GRINDING	SHORT TERM PAVEMENT MARKING	SHORT TERM PAVEMENT MARKING REMOVAL	COMMENTS	
					LINE - 4" WHITE	LINE - 4" YELLOW		LINE- 24" WHITE	LETTERS AND SYMBOLS					
						SOLID	SOLID	SKIP - DASH						SOLID
						FOOT	FOOT	FOOT						FOOT
IL 150														
STA	662+03	TO	STA	651+96.00	2,014	1,007	252	33		1,157	552	184	NB NPZ	
STA	651+96.00	TO	STA	643+80.77	1,480	1,630				1,037	447	149	NPZ	
STA	647+44.00	TO	STA	646+91.00				24	65	113	346	115	RR SYMBOLS	
STA	644+00.00	TO	STA	644+00.00				12		24	108	36	RR STOP BAR	
STA	643+80.77	TO	STA	643+70.03	RAILROAD OMISSION									
STA	643+50.00	TO	STA	643+50.00				12		24	108	36	RR STOP BAR	
STA	640+57.00	TO	STA	640+03.00				24	65	113	346	115	RR SYMBOLS	
STA	643+70.03	TO	STA	643+56.00	28	28				19	9	3	NPZ	
STA	643+56.00	TO	STA	632+39.00	2,234	1,117	279			1,211	612	204	SB NPZ	
STA	632+39.00	TO	STA	628+95.00	688		86			258	96	32		
STA	628+95.00	TO	STA	621+94.32	1,401	701	175			760	384	128	NB NPZ	
STA	621+95.70	TO	STA	617+51.00	889	445	111			482	243	81	NB NPZ	
STA	617+51.00	TO	STA	615+09.00	484	484				323	132	44	NPZ	
STA	615+09.00	TO	STA	603+60.00	2,298	1,149	287			1,245	627	209	SB NPZ	
STA	603+60.00	TO	STA	590+87	2,546		318			955	348	116		
STA	590+87.00	TO	STA	581+74.18	1,826	913	228			989	498	166	NB NPZ	
STA	581+67.79	TO	STA	579+80.00	376	188	47			204	105	35	NB NPZ	
STA	579+80	TO	STA	575+30	900	900				600	246	82	NPZ	
STA	569+74	TO	STA	569+74					23	23			BICYCLE PM W ARROW STALT & RT	
STA	575+30	TO	STA	568+79	1,302	651	163			706	357	119	SB NPZ	
STA	566+15	TO	STA	566+15					23	23			BICYCLE PM W ARROW STALT & RT	
STA	565+55	TO	STA	565+55					23	23			BICYCLE PM W ARROW STALT & RT	
STA	562+97	TO	STA	562+97					23	23			BICYCLE PM W ARROW STALT & RT	
STA	562+45	TO	STA	562+45					23	23			BICYCLE PM W ARROW STALT & RT	
STA	568+79	TO	STA	561+11.00	1,536		192			576	210	70		
STA	561+11	TO	STA	559+95.26	231	116	29			126	66	22	NB NPZ	
STA	0+00	TO	STA	0+84	168	84	21			92	48	16	NB NPZ	
STA	560+05	TO	STA	560+57				34	65	133	419	140	RR SYMBOLS	
STA	0+52	TO	STA	0+52				17		34	306	102	RR STOP BAR	
STA	0+55	TO	STA	0+55					12	12			BICYCLE PM W ARROW STALT	
STA	0+84	TO	STA	0+92	RAILROAD OMISSION									
STA	1+26	TO	STA	1+26					12	12			BICYCLE PM W ARROW STALT	
STA	1+32	TO	STA	1+32				17		34	306	102	RR STOP BAR	
STA	1+95	TO	STA	2+47				34	65	133	419	140	RR SYMBOLS	
STA	0+92	TO	STA	3+29	474	237	59			257	132	44	SB NPZ	
STA	3+29	TO	STA	8+42	1,026		128			385	141	47		
STA	4+18	TO	STA	4+18					23	23			BICYCLE PM W ARROW STALT & RT	
STA	5+00	TO	STA	5+00					23	23			BICYCLE PM W ARROW STALT & RT	
STA	7+51	TO	STA	7+51					12	12			BICYCLE PM W ARROW STALT	
STA	8+17	TO	STA	8+17					12	12			BICYCLE PM W ARROW STALT	
STA	8+42	TO	STA	15+11	1,338	669	167			725	366	122	NB NPZ	
STA	10+73	TO	STA	10+73					12	12			BICYCLE PM W ARROW STALT	
STA	15+11	TO	STA	17+00	378	378				252	105	35	NPZ	
STA	17+00	TO	STA	18+98	396	198	50			215	111	37	SB NPZ	
STA	18+95.84	TO	STA	26+65	1,538	769	192			834	420	140	SB NPZ	
STA	18+98	TO	STA	37+06	3,616		452			1,356	495	165		
STA	37+06	TO	STA	46+81	1,950	975	244			1,057	534	178	NB NPZ	
STA	46+81	TO	STA	51+16	870	870				580	240	80	NPZ	
STA	51+16	TO	STA	57+68	1,304	1,127	163			865	357	119	SB NPZ	
TOTAL					51,572			207	481	18,095	10,239	3,413		

MODEL: MARKING [Sheet]
FILE NAME: c:\pav_work\pav\tdot\lay\pmd\cd090522\078A82-ShIE-Sched.ules.dgn

USER NAME = Nathan,Taylor	DESIGNED -	REVISED -	STATE OF ILLINOIS DEPARTMENT OF TRANSPORTATION	PAVEMENT MARKING SCHEDULE			F.A.P RTE.	SECTION	COUNTY	TOTAL SHEETS	SHEET NO.
	DRAWN -	REVISED -					061	(111,X,566)RS-3	PERRY	18	16
	CHECKED -	REVISED -		CONTRACT NO. 78A82							
PLOT DATE = 8/16/2024	DATE -	REVISED -		SCALE:	SHEET OF 18 SHEETS	STA. TO STA.	ILLINOIS FED. AID PROJECT				

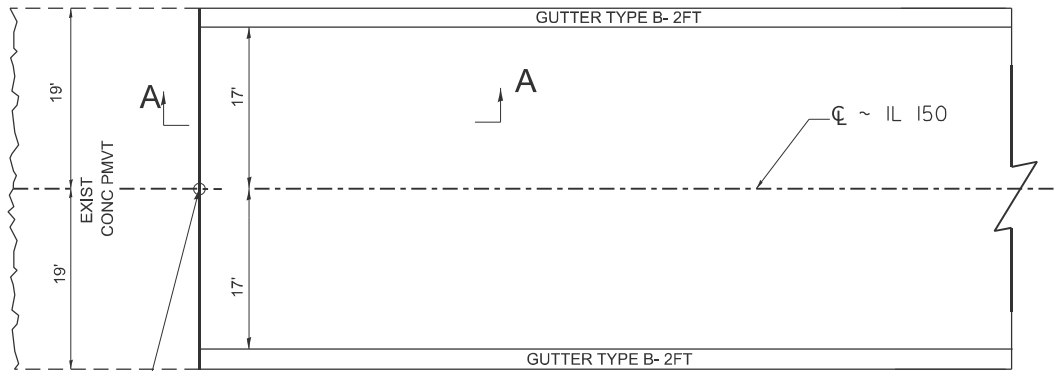
HMA TRANSITIONS



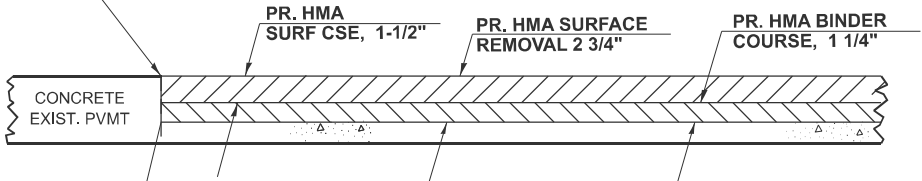
TO BE USED:
STA: 581+74.18 TO STA: 581+99.18
STA: 14+35 TO STA: 14+60

INLAY DETAIL

N.T.S.



STA. 0+84.2
STA. 0+92.2



SAW CUT (INCLUDED IN THE COST OF HMA SURFACE REMOVAL- 2 3/4"

NOTE: BUTT JOINT AT THIS LOCATION SHALL BE INCLUDED IN COST OF HMA SURFACE REMOVAL 2.75"

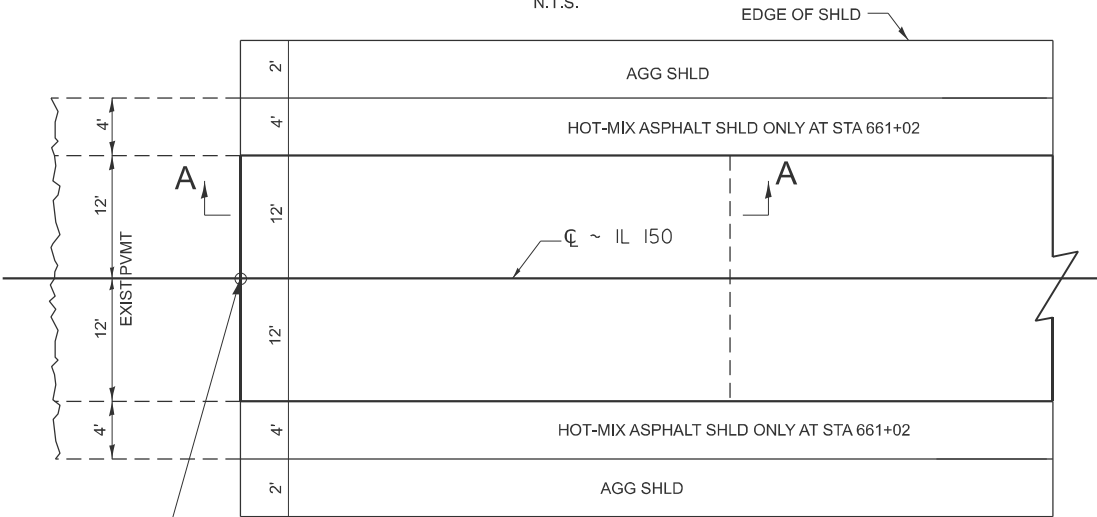
SECTION A-A

STD. 9-II8

REVISIONS	
DRAWN	3-10-23
REVISED	
REVISED	
REVISED	

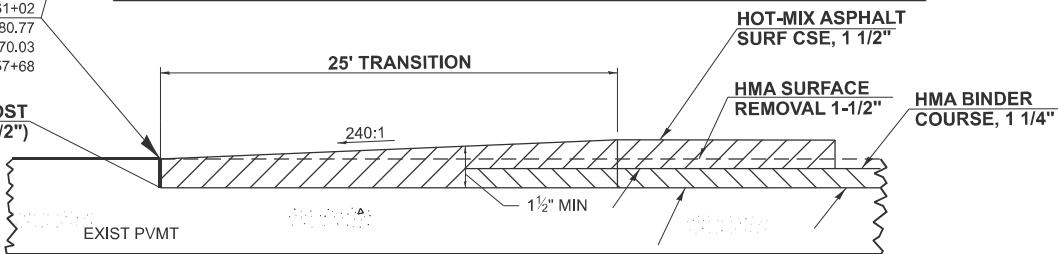
BUTT JOINT WITH MILLING

N.T.S.



STA 661+02
STA 643+80.77
STA 643+70.03
STA 57+68

SAW CUT (INCLUDED IN THE COST OF HMA SURFACE REMOVAL- (1-1/2")



NOTE: BUTT JOINT AT THIS LOCATION SHALL BE INCLUDED IN COST OF HMA SURFACE REMOVAL 1.50"

SECTION A-A

STD. 9-14

DRAWN	03-16-23
REVISED	
REVISED	
REVISED	

MODEL: Entrance Details-2 [Sheet]
FILE NAME: c:\pwworking\tdtaylor\dwg\990522\078A82-SHS-District\Std.sgn

USER NAME = Nathan.Taylor	DESIGNED -	REVISED -
	DRAWN -	REVISED -
	CHECKED -	REVISED -
PLOT DATE = 8/16/2024	DATE -	REVISED -

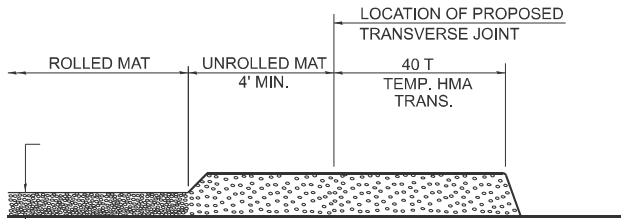
STATE OF ILLINOIS
DEPARTMENT OF TRANSPORTATION

HMA TRANSITIONS
INLAY AND BUTT JOINT DETAILS

SCALE: SHEET OF 18 SHEETS STA. TO STA.

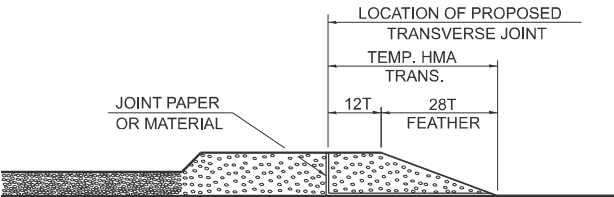
F.A.P. RTE.	SECTION	COUNTY	TOTAL SHEETS	SHEET NO.
861	(111,X,566)RS-3	PERRY	18	17
CONTRACT NO. 78A82				
ILLINOIS FED. AID PROJECT				

TEMPORARY HOT-MIX ASPHALT TRANSITIONS



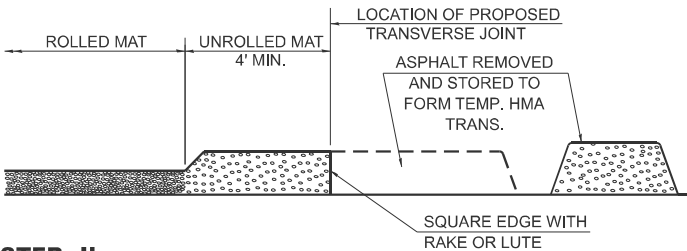
STEP I

- 1. PLACE HOT-MIX ASPHALT MAT, LENGTH 40 TIMES THE THICKNESS OF THE MAT BEING PLACED PAST THE PROPOSED TRANSVERSE JOINT LOCATION USING NORMAL OPERATING PROCEDURES.
- 2. EXTREME CARE SHOULD BE TAKEN TO MAINTAIN ENOUGH MATERIAL IN FRONT OF THE SCREED TO MAINTAIN REQUIRED PAVING DEPTH.



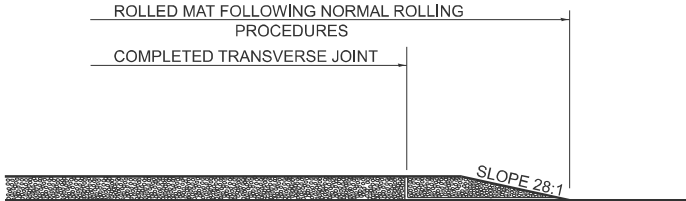
STEP III

- 1. JOINT PAPER OR OTHER PRESELECTED JOINT MATERIAL IS THEN PLACED IN THE CLEARED AREA AND THE EXCESS ASPHALT USED TO HAND FORM A TRANSITION TO THE DIMENSIONS SHOWN ABOVE.
- 2. NOTE THAT IN CONSTRUCTING THE TRANSITION, THE MAT DEPTH IS CONTINUED AS PART OF THE TRANSITION BEFORE FORMING THE FEATHER.



STEP II

- 1. MOVE THE PAVER OUT OF THE WAY AND REMOVE THE ASPHALT FROM THE AREA OF THE PROPOSED TEMPORARY HOT-MIX ASPHALT TRANSITION.
- 2. SQUARE UP THE END OF THE MAT WITH A RAKE OR LUTE.
- 3. NOTE THAT THE MAT WITHIN 4' OF THE END OF JOINT IS NOT TO BE ROLLED AT THIS TIME.



STEP IV

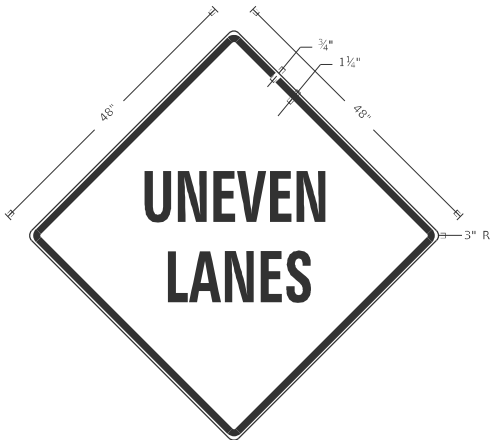
- 1. COMPLETE TEMPORARY TRANSITION BY ROLLING.
- 2. TO RESUME PAVING, AT THE JOINT, REMOVE TEMPORARY TRANSITION AND DISPOSE OF THE MATERIAL ACCORDING TO ART. 202.03 OF THE STD. SPECS. (COST INCLUDED IN THE CONTRACT).
- 3. CONSTRUCTING THE TEMPORARY TRANSITIONS WILL NOT BE PAID FOR SEPARATELY IN ACCORDANCE WITH ARTICLE 406.14 OF THE STANDARD SPECIFICATIONS.

STD. 9-18

DRAWN	02-15-89
REVISED	01-09-07
REVISED	10-21-21
REVISED	05-26-22

UNEVEN LANES SIGN

W8-11 (48" x 48")



COLORS:

LEGEND AND BORDER - BLACK NON-REFLECTORIZED
BACKGROUND - ORANGE REFLECTORIZED

NOTE: PRIOR TO ALLOWING TRAFFIC ON ANY PORTION OF THE ROADWAY THAT HAS BEEN COLDMILLED OR BEFORE RESURFACING OPERATIONS BEGIN, THE CONTRACTOR SHALL HAVE ERECTED "UNEVEN PAVEMENT" SIGNS THAT CONFORM TO THE ABOVE DETAILS. A MINIMUM OF ONE SIGN AT EACH END OF THE IMPROVEMENT WILL BE REQUIRED. THE CONTRACTOR SHALL MAINTAIN THE "UNEVEN PAVEMENT" SIGNS UNTIL THE RESURFACING OPERATIONS ARE COMPLETED.

IF AT ANY TIME THE SIGNS ARE IN PLACE BUT NOT APPLICABLE, THEY SHALL BE TURNED FROM THE VIEW OF MOTORISTS OR COVERED AS DIRECTED BY THE ENGINEER.

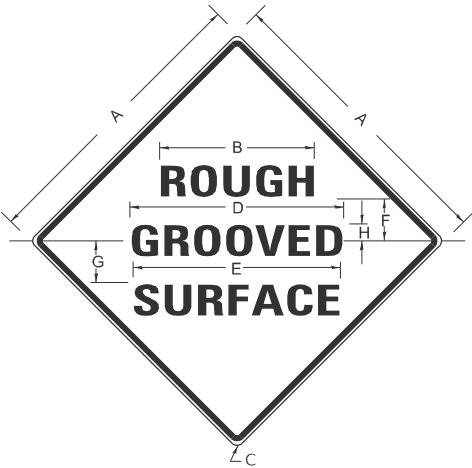
THE COST OF FURNISHING, ERECTING, MAINTAINING, AND REMOVING THE REQUIRED SIGNS SHALL BE INCLUDED IN THE CONTRACT.

REVISIONS

DRAWN	2-15-89
REVISED	4-06-93
REDSIGNED	7-23-04
RESIZED	5-08-08
REVIEWED	5-17-13
REVISED	10-21-21

STD. 9-41

ILLINOIS STANDARD



COLORS:

LEGEND AND BORDER- BLACK NON-REFLECTORIZED
BACKGROUND- ORANGE REFLECTORIZED

SIGN SIZE	DIMENSIONS							
	A	B	C	D	E	F	G	H
48X48	48.0	24.1	3.0	34.0	33.0	6.0	13.0	3.5

SIGN SIZE	SERIES LINES			MAR-GIN	BOR-DER	BLANK STD.
	1	2	3			
48X48	7C	7C	7C	0.8	1.2	B4-48D

ALL DIMENSIONS IN INCHES

NOTES:

PRIOR TO ALLOWING TRAFFIC ON ANY PORTION OF THE ROADWAY THAT HAS BEEN COLDMILLED, THE CONTRACTOR SHALL HAVE ERECTED "ROUGH GROOVED SURFACE" SIGNS THAT CONFORM TO THE ABOVE DETAILS. A MINIMUM OF ONE SIGN AT EACH END OF THE IMPROVEMENT WILL BE REQUIRED. THE CONTRACTOR SHALL MAINTAIN THE "ROUGH GROOVED SURFACE" SIGNS UNTIL THE COLDMILLED SURFACE IS COVERED WITH LEVELING BINDER OR SURFACE COURSE.

IF AT ANY TIME THE SIGNS ARE IN PLACE BUT NOT APPLICABLE, THEY SHALL BE TURNED FROM THE VIEW OF MOTORISTS OR COVERED AS DIRECTED BY THE ENGINEER.

THE COST OF FURNISHING, ERECTING, MAINTAINING, AND REMOVING THE REQUIRED SIGNS SHALL BE INCLUDED IN THE CONTRACT.

REVISIONS

REDRAWN	2-15-89
REVISED	4-6-93
REVISED	3-27-08
REVIEWED	5-17-13
REVISED	10-21-21

STD. 9-39

MODEL: DIS STANDARDS [Sheet]
FILE NAME: c:\p\work\illinois\standards\939\9390522\078A82-Shis-DistrictStd.sgn

USER NAME = Nathan.Taylor	DESIGNED -	REVISED -
	DRAWN -	REVISED -
	CHECKED -	REVISED -
PLOT DATE = 8/15/2024	DATE -	REVISED -

STATE OF ILLINOIS
DEPARTMENT OF TRANSPORTATION

DISTRICT DETAILS

SCALE: SHEET OF 18 SHEETS STA. TO STA.

F.A.P RTE.	SECTION	COUNTY	TOTAL SHEETS	SHEET NO.
861	(111,X,566)RS-3	PERRY	18	18
CONTRACT NO. 78A82				
ILLINOIS FED. AID PROJECT				