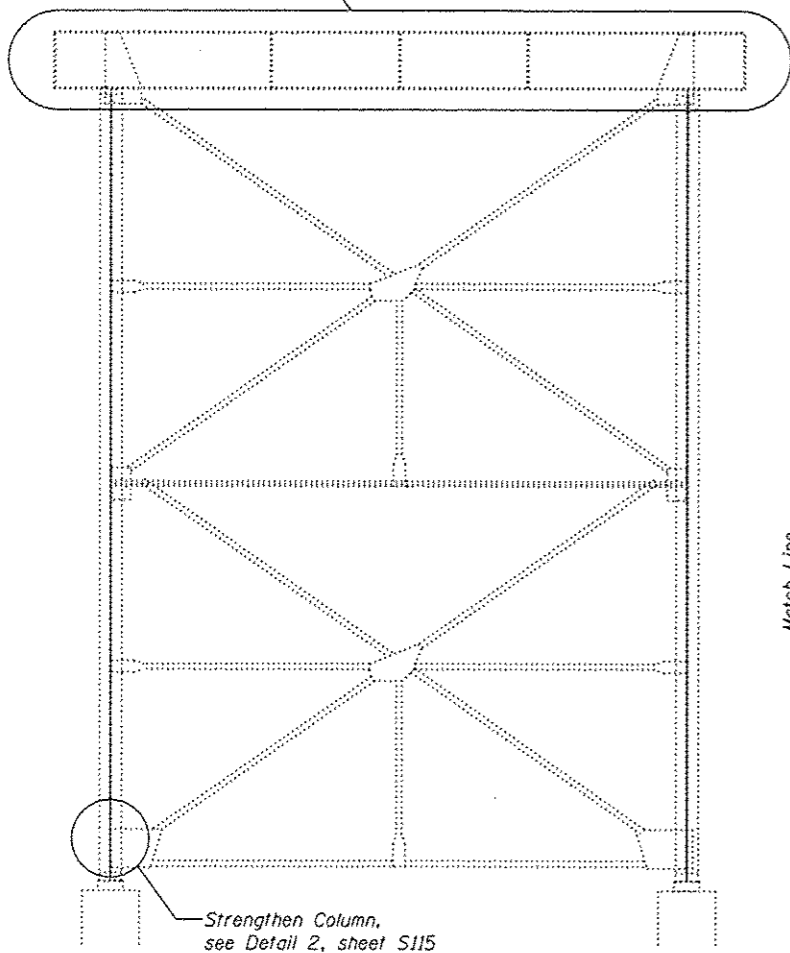
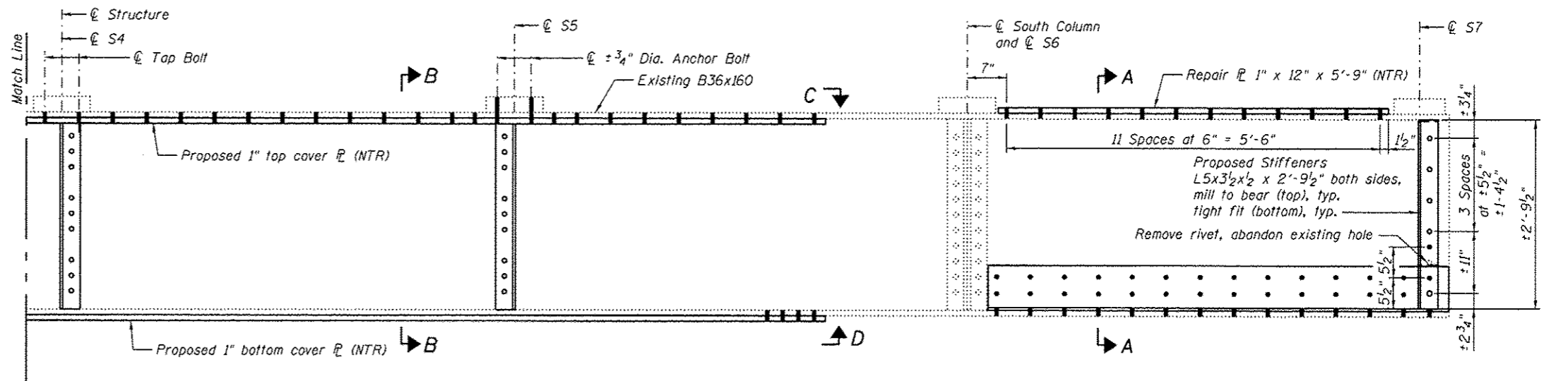
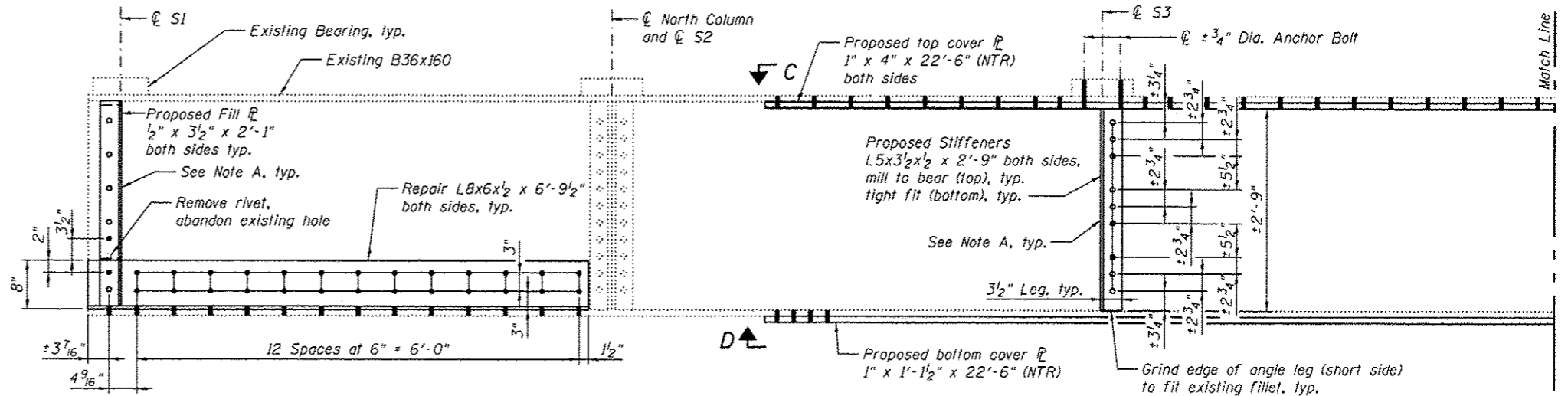


Strengthen Bent Cap, see Detail 1, this sheet.

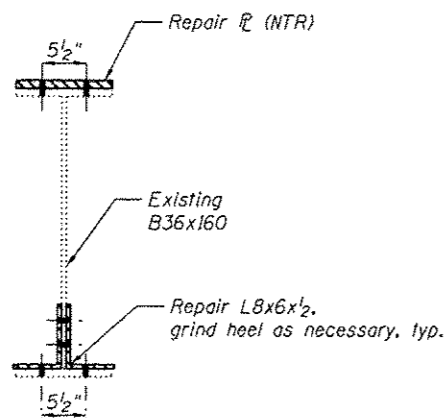


Strengthen Column, see Detail 2, sheet S115

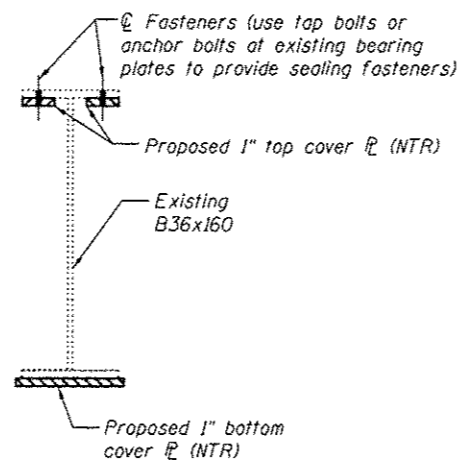
BENT 17
(Looking East)



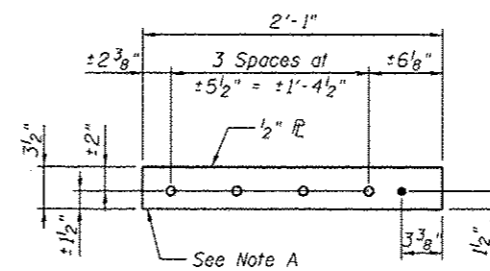
DETAIL 1



SECTION A-A



SECTION B-B



FILL PL

BILL OF MATERIAL

Item	Unit	Total
Structural Steel Repair	Pound	3,460

Notes:
 All bolted connections shown on this sheet shall be made with 3/4" dia. H.S. bolts.
 Load carrying components designated "NTR" shall conform to the Impact Testing Requirement, Zone 2.
 For View C-C and View D-D details, see sheet S124.

Note A:
 Field drill holes using existing holes as template. Remainder of holes may be shop or field drilled.



USER NAME *	DESIGNED - YSS	REVISED
PLOT SCALE *	CHECKED - ZJB	REVISED
PLOT DATE * 05/02/2014	DRAWN - AEC	REVISED
	CHECKED - YSS	REVISED

STATE OF ILLINOIS
 DEPARTMENT OF TRANSPORTATION

ILLINOIS APPROACH BENT 17 REPAIRS - 1
 S.N. 082-6001 MLK BRIDGE OVER MISSISSIPPI RIVER

SHEET NO. S114 OF S138 SHEETS

F.A.P. RTE.	SECTION	COUNTY	TOTAL SHEETS	SHEET NO.
799	IBR, DRS-2	ST. CLAIR	156	132
CONTRACT NO. 76B03			ILLINOIS FED. AID PROJECT	