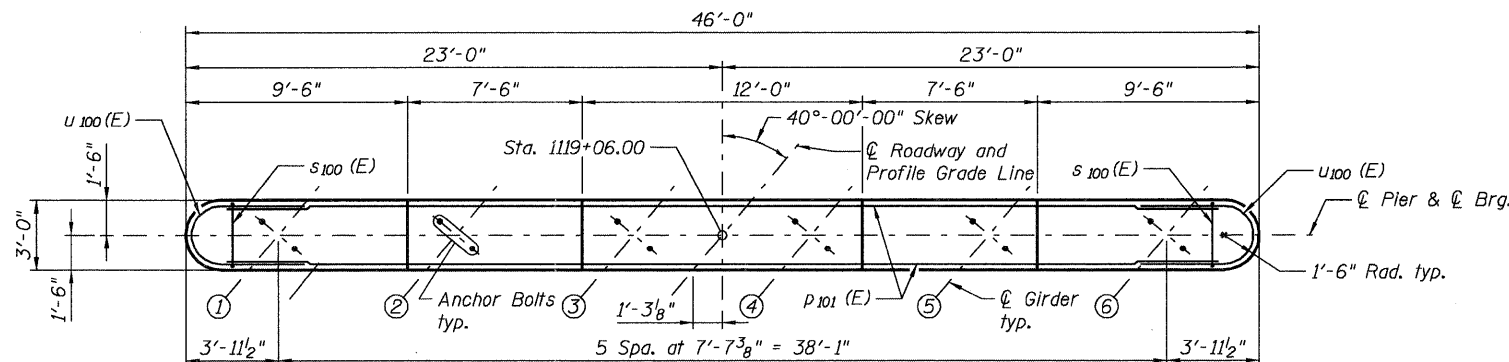
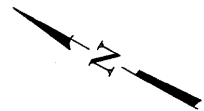
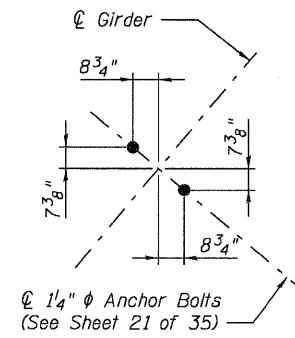


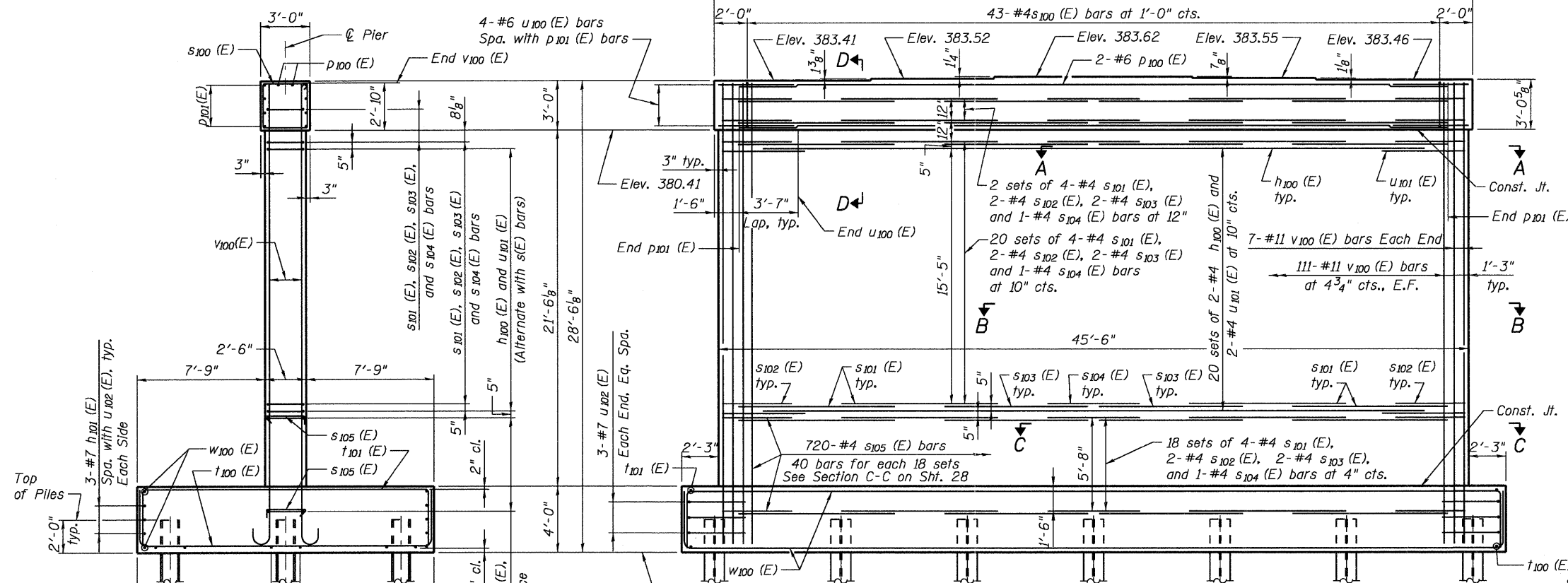
29-SEP-2011 P:\A\0326703\700cadd\709str\steel\Fabrication.dwg\039-0074978049-Pier1.dgn



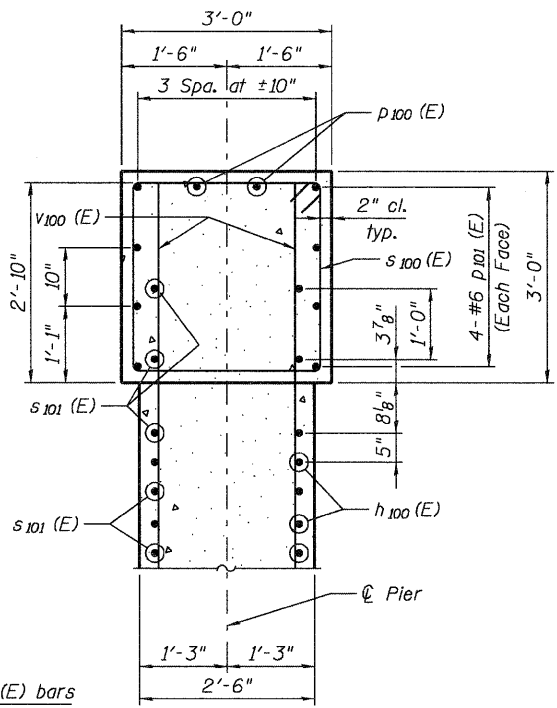
TOP PLAN



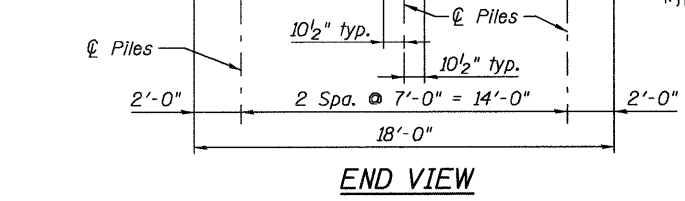
ANCHOR BOLT LAYOUT



ELEVATION (Looking Ahead Station)

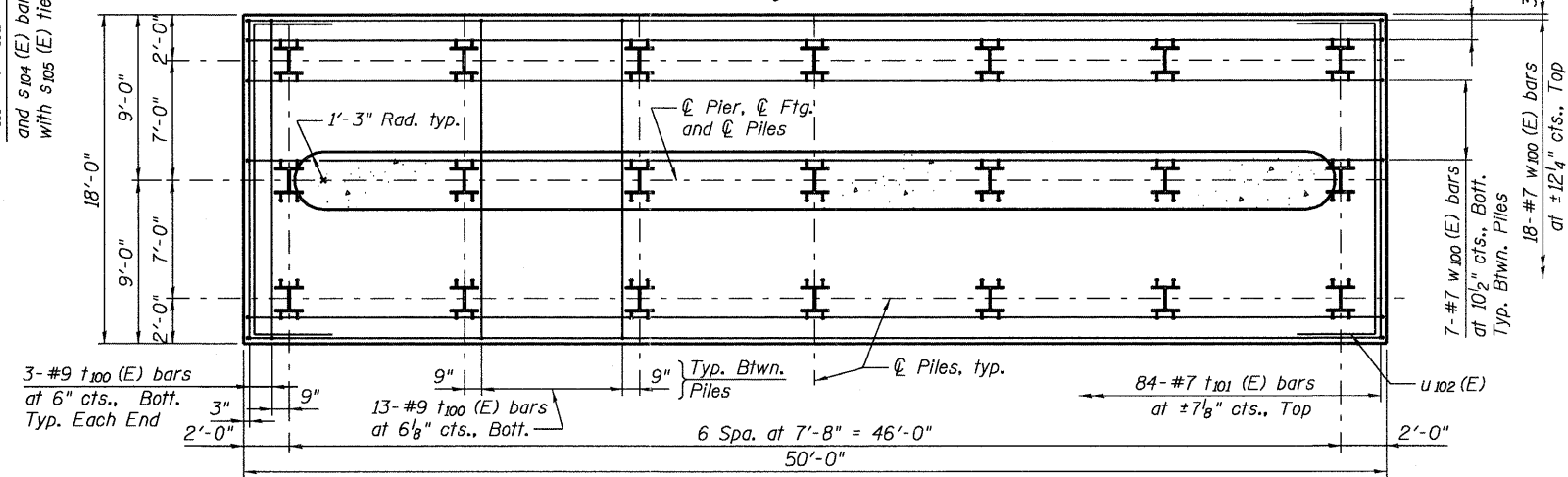


SECTION D-D



END VIEW

**PILE DATA**  
 Type: Steel HP14x73  
 Nominal Required Bearing: 509 kips  
 Factored Resistance Available: 280 kips  
 Est. Length: 49 ft  
 No. Production Piles: 20  
 No. Test Piles: 1



FOOTING PLAN

**NOTES**  
 All edges shall have 3/4 inch chamfer.  
 Pour steps monolithically with cap.  
 Place reinforcement in cap to miss anchor bolts.  
 For details of bearings, see Sheet 21 of 35.  
 For details of piles, see Sheet 30 of 35.

FOR INFORMATION ONLY

<b>JACOBS</b> FILE NAME=039-0074978049-Pier1.dgn	USER NAME =	DESIGNED - B. ERSCHEN CHECKED - N. KHATRI DRAWN - C. SALLADE CHECKED - J. SMITH	REVISED - REVISED - REVISED - REVISED -	STATE OF ILLINOIS DEPARTMENT OF TRANSPORTATION	PIER 1 PLAN AND ELEVATION STRUCTURE NO. 039-0074	F.A.P. RTE. 686	SECTION 114F-1	COUNTY JACKSON	TOTAL SHEETS 22	SHEET NO. 24	CONTRACT NO. 78283
	PLOT DATE = 29-SEP-2011	SHEET NO. 26 OF 35 SHEETS	ILLINOIS FED. AID PROJECT								