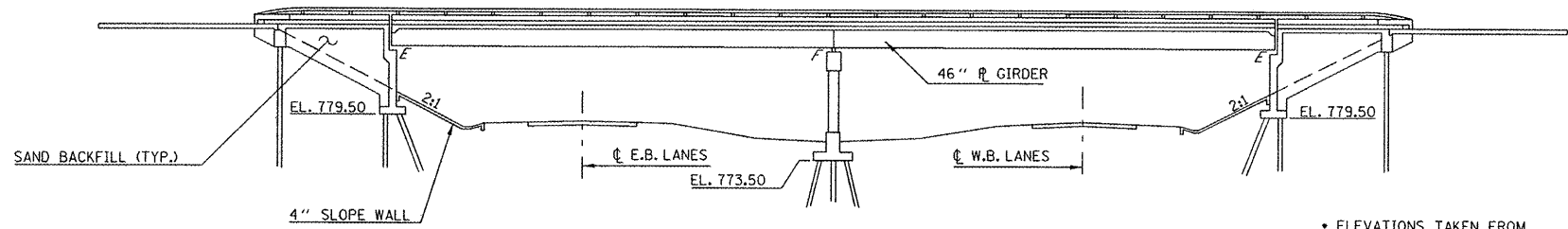


GENERAL PLAN & ELEVATION

S.N. 057-0132



* ELEVATIONS TAKEN FROM AS-BUILT PLANS AND ARE SHOWN FOR PERSPECTIVE ONLY.

ELEVATION VIEW

THE EXISTING OVERHEAD STRUCTURE WAS BUILT IN 1970 BY THE STATE OF ILLINOIS AS FAI ROUTE 74, SECTION 57-23HB-1 AT STATION 308+57.53 AT LEROY IN MCLEAN COUNTY. THE SUPERSTRUCTURE CONSISTS OF NINE 46" STEEL PLATE GIRDERS SUPPORTING A 8" R.C. DECK AND 3/8" THIN POLYMER CONCRETE WEARING SURFACE. THE SUPERSTRUCTURE IS SUPPORTED BY TWO SAND-FILLED, VAULTED ABUTMENTS ON SPREAD FOOTINGS AND CREOSOTED TIMBER PILES AND ONE TRAPEZOIDAL PIER ON A SPREAD FOOTING AND TIMBER PILES. THE EXISTING STRUCTURE MEASURES 225'-5" FROM BACK TO BACK OF APPROACH BENTS AND 68'-0" OUT TO OUT OF DECK. THE HORIZONTAL CLEARANCE IS 64'-6" FROM FACE TO FACE OF CURB INCLUDING 23'-9" OF CLEAR ROADWAY FOR EACH DIRECTION AND A 17'-0" VAULTED MEDIAN.

SEE LIST OF PROPOSED IMPROVEMENTS ON THIS SHEET.

WORK SHALL BE COMPLETED WITH STAGED CONSTRUCTION.

PROPOSED IMPROVEMENTS

1. 1/4" DECK SCARIFICATION.
2. FULL-DEPTH DECK PATCHING.
3. STRUCTURAL REPAIR OF CONCRETE ON MEDIAN CURB FACES.
4. PLACEMENT OF PROPOSED LATEX CONCRETE WEARING SURFACE.
5. REPLACE EXISTING PREFORMED JOINT SEALS WITH SILICONE JOINT SEALER AND POLYMER CONCRETE NOSING.

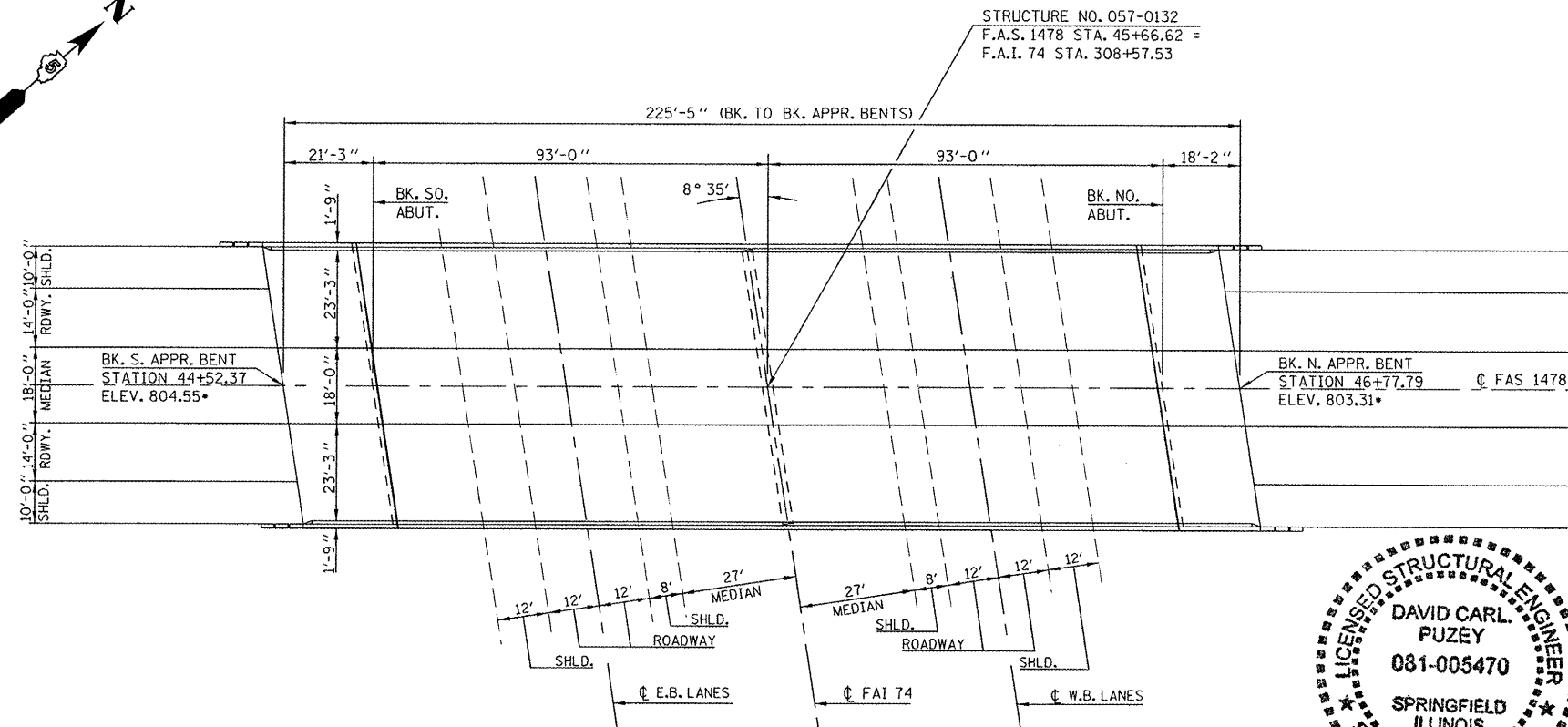
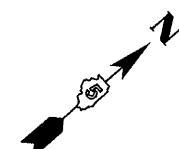
TOTAL BILL OF MATERIALS

ITEM	UNIT	TOTAL
BRIDGE DECK SCARIFICATION, 1/4"	SQ YD	1190.0
BRIDGE DECK LATEX CONCRETE OVERLAY, 2 3/4"	SQ YD	1190.0
BRIDGE DECK GROOVING	SQ YD	1090.0
STRUCTURAL REPAIR OF CONCRETE (DEPTH <= 5")	SQ FT	150.0
DECK SLAB REPAIR (FULL-DEPTH, TY I)	SQ YD	20.0
DECK SLAB REPAIR (FULL-DEPTH, TY II)	SQ YD	50.0
POLYMER CONCRETE	CU FT	8.2
SILICONE JOINT SEALER, 3"	FOOT	138.0
PROTECTIVE SHIELD	SQ YD	613.0

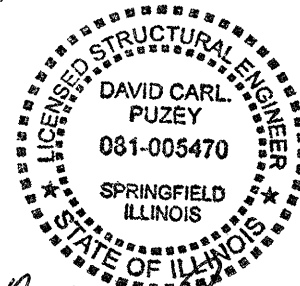
GENERAL NOTES

PLAN DIMENSIONS AND DETAILS RELATIVE TO EXISTING PLANS ARE SUBJECT TO NOMINAL CONSTRUCTION VARIATIONS. THE CONTRACTOR SHALL FIELD VERIFY EXISTING DIMENSIONS AND DETAILS AFFECTING NEW CONSTRUCTION AND MAKE NECESSARY APPROVED ADJUSTMENTS PRIOR TO CONSTRUCTION OR ORDERING OF MATERIALS. SUCH VARIATIONS SHALL NOT BE CAUSE FOR ADDITIONAL COMPENSATION FOR A CHANGE IN SCOPE OF WORK, HOWEVER, THE CONTRACTOR WILL BE PAID FOR THE QUANTITY ACTUALLY FURNISHED AT THE UNIT PRICE BID FOR THE WORK.

EXISTING REINFORCEMENT BARS EXTENDING INTO THE REMOVAL AREA SHALL BE CLEANED, STRAIGHTENED AND INCORPORATED INTO THE NEW CONSTRUCTION. ANY REINFORCEMENT BARS THAT ARE DAMAGED DURING CONCRETE REMOVAL SHALL BE REPLACED WITH AN APPROVED SPLICER OR ANCHORAGE SYSTEM. COST INCLUDED WITH CONCRETE REMOVAL.



PLAN VIEW



David Carl Puzey 10/4/11
Expires 11/30/12

FILE NAME =	USER NAME = ppersonbr	DESIGNED - GMS	REVISED -	STATE OF ILLINOIS DEPARTMENT OF TRANSPORTATION	GENERAL PLAN & ELEVATION S.N. 057-0132	F.A.I. RTE. 74	SECTION (57-23,57-24)RS-1	COUNTY MCLEAN	TOTAL SHEETS 175	SHEET NO. 90
DRAWN - GMS CHECKED - ATH DATE -				SCALE:	SHEET NO. 1 OF 11 SHEETS	STA.	TO STA.	CONTRACT NO. 70648		
PLOT SCALE = 40,0000 1/16" in. PLOT DATE = 8/25/2011				ILLINOIS FED. AID PROJECT						