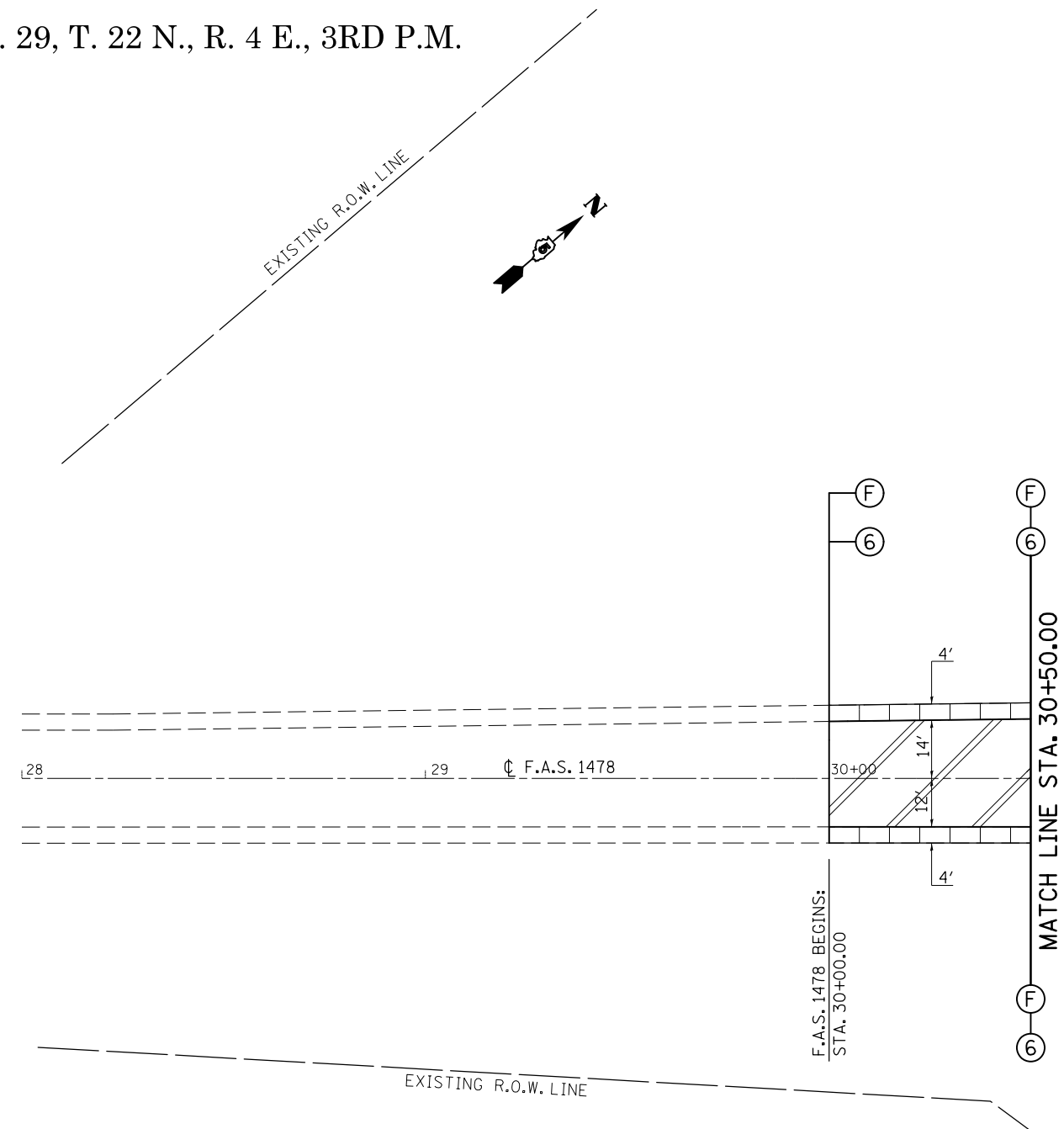




SEC. 29, T. 22 N., R. 4 E., 3RD P.M.



-  HMA SURFACE REMOVAL, 1 1/2"
-  HMA SURFACE REMOVAL, 2 1/2"

SEC. 28, T. 22 N., R. 4 E., 3RD P.M.

FILE NAME = c:\pwork\pwork\personbr\d0184863\0570648-sh-t-plan_FAS1478.dgn	USER NAME = personbr	DESIGNED - GAE	REVISED -	STATE OF ILLINOIS DEPARTMENT OF TRANSPORTATION	PLAN SHEETS F.A.S. 1478			F.A.I. RTE. = 74	SECTION = (57-23,57-24)RS-1	COUNTY = MCLEAN	TOTAL SHEETS = 175	SHEET NO. = 55
	PLOT SCALE = 40.0000' / in.	CHECKED -	REVISED -		SCALE: 1" = 20'	SHEET NO. 1 OF 7 SHEETS	STA. 28+00.00 TO STA. 30+50.00	CONTRACT NO. 70648				
PLOT DATE = 8/25/2011	DATE - 03/17/11	REVISED -	REVISED -		ILLINOIS FED. AID PROJECT							