

SECTION	COUNTY	TOTAL SHEETS	SHEET NO.
02-00090-00-BT	DUPAGE	117	16
STA. TO STA.			
IDOT PROJECT NO. M-8003(222)			
SALT CREEK GREENWAY TRAIL			
CONTRACT NO. 83713			

PROP. CURVE CL1-14
 PI STA = 10+045.882
 N = 50,791.916
 E = 5,030.281
 $\Delta = 19^\circ 10' 26''$ (LT)
 R = 40.000 m
 T = 6.756 m
 L = 13.386 m
 E = 0.567 m

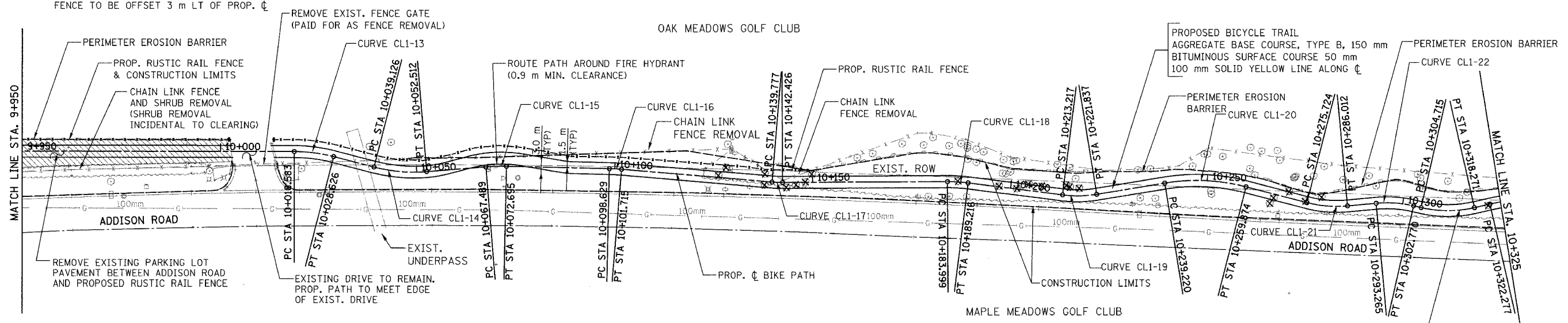
PROP. CURVE CL1-17
 PI STA = 10+141.102
 N = 50,696.796
 E = 5,028.224
 $\Delta = 5^\circ 03' 35''$ (LT)
 R = 30.000 m
 T = 1.325 m
 L = 2.649 m
 E = 0.029 m

PROP. CURVE CL1-19
 PI STA = 10+217.557
 N = 50,620.577
 E = 5,024.572
 $\Delta = 16^\circ 27' 45''$ (LT)
 R = 30.000 m
 T = 4.340 m
 L = 8.620 m
 E = 0.312 m

PROP. CURVE CL1-21
 PI STA = 10+280.919
 N = 50,558.267
 E = 5,021.921
 $\Delta = 19^\circ 38' 55''$ (LT)
 R = 30.000 m
 T = 5.195 m
 L = 10.288 m
 E = 0.446 m

PROP. CURVE CL1-23
 PI STA = 10+311.611
 N = 50,527.809
 E = 5,020.454
 $\Delta = 25^\circ 53' 22''$ (LT)
 R = 30.000 m
 T = 6.896 m
 L = 13.556 m
 E = 0.782 m

PROPOSED RUSTIC RAIL FENCE LIMITS;
 STA. 9+818.6 LT TO STA. 10+003.5 LT
 STA. 10+013 LT TO STA. 10+149.80 LT
 FENCE TO BE OFFSET 3 m LT OF PROP. ϕ



PROP. CURVE CL1-13
 PI STA = 10+023.631
 N = 50,813.515
 E = 5,035.847
 $\Delta = 14^\circ 23' 11''$ (RT)
 R = 40.000 m
 T = 5.048 m
 L = 10.044 m
 E = 0.317 m

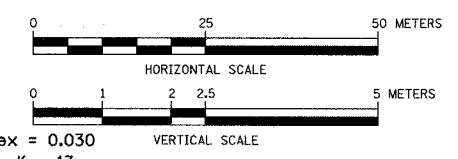
PROP. CURVE CL1-15
 PI STA = 10+070.095
 N = 50,767.660
 E = 5,032.286
 $\Delta = 5^\circ 57' 57''$ (RT)
 R = 50.000 m
 T = 2.605 m
 L = 5.206 m
 E = 0.068 m

PROP. CURVE CL1-16
 PI STA = 10+100.172
 N = 50,737.585
 E = 5,031.633
 $\Delta = 3^\circ 32' 10''$ (RT)
 R = 50.000 m
 T = 1.543 m
 L = 3.086 m
 E = 0.024 m

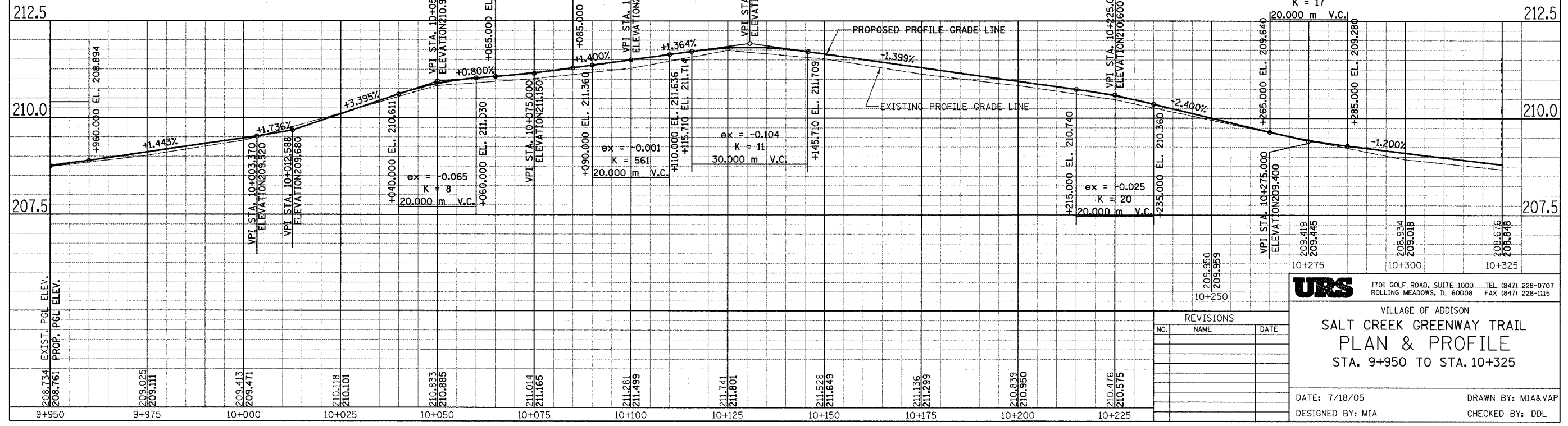
PROP. CURVE CL1-18
 PI STA = 10+186.611
 N = 50,651.286
 E = 5,028.447
 $\Delta = 7^\circ 28' 23''$ (RT)
 R = 40.000 m
 T = 2.612 m
 L = 5.217 m
 E = 0.085 m

PROP. CURVE CL1-20
 PI STA = 10+249.696
 N = 50,588.798
 E = 5,029.759
 $\Delta = 23^\circ 40' 08''$ (RT)
 R = 50.000 m
 T = 10.477 m
 L = 20.655 m
 E = 1.086 m

PROP. CURVE CL1-22
 PI STA = 10+298.058
 N = 50,541.098
 E = 5,023.498
 $\Delta = 18^\circ 09' 17''$ (RT)
 R = 30.000 m
 T = 4.793 m
 L = 9.506 m
 E = 0.380 m



FOR LEGEND SEE SHEET NO. 14



URS
 1701 GOLF ROAD, SUITE 1000 TEL (847) 228-0707
 ROLLING MEADOWS, IL 60008 FAX (847) 228-1115

VILLAGE OF ADDISON
SALT CREEK GREENWAY TRAIL
PLAN & PROFILE
 STA. 9+950 TO STA. 10+325

DATE: 7/18/05
 DESIGNED BY: MIA
 DRAWN BY: MIA&VAP
 CHECKED BY: DDL

REVISIONS		
NO.	NAME	DATE