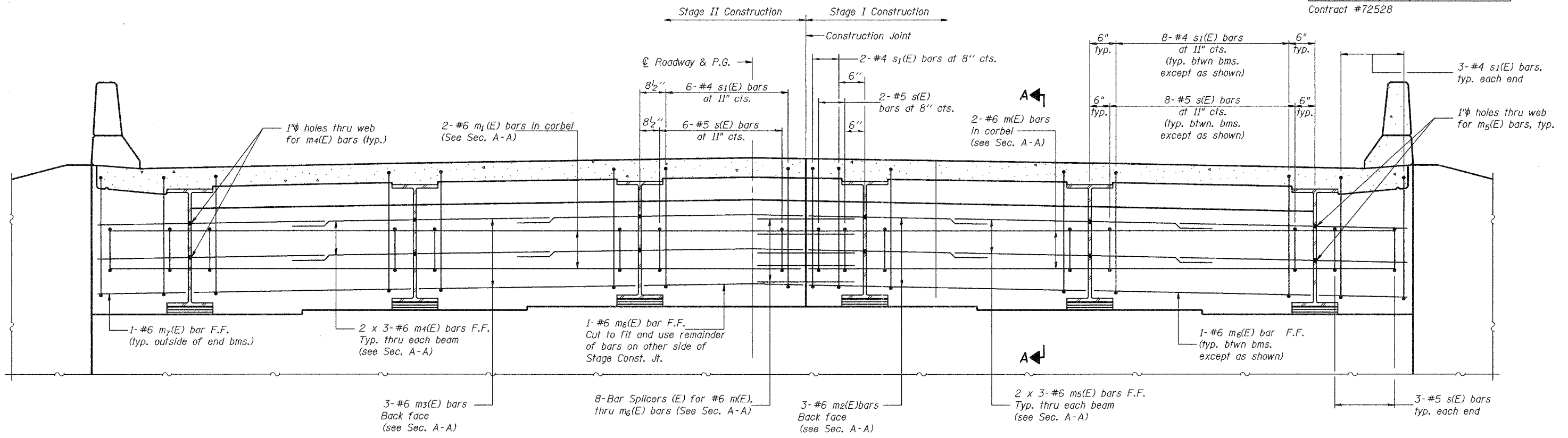


STATE OF ILLINOIS
DEPARTMENT OF TRANSPORTATION

ROUTE NO.	SECTION	COUNTY	TOTAL SHEETS	SHEET NO.	SHEET NO. 8
F.A.P. 310	81B-1	MORGAN	114	59	16 SHEETS
FED. ROAD DIST. NO. 7	ILLINOIS	FED. AID PROJECT-			

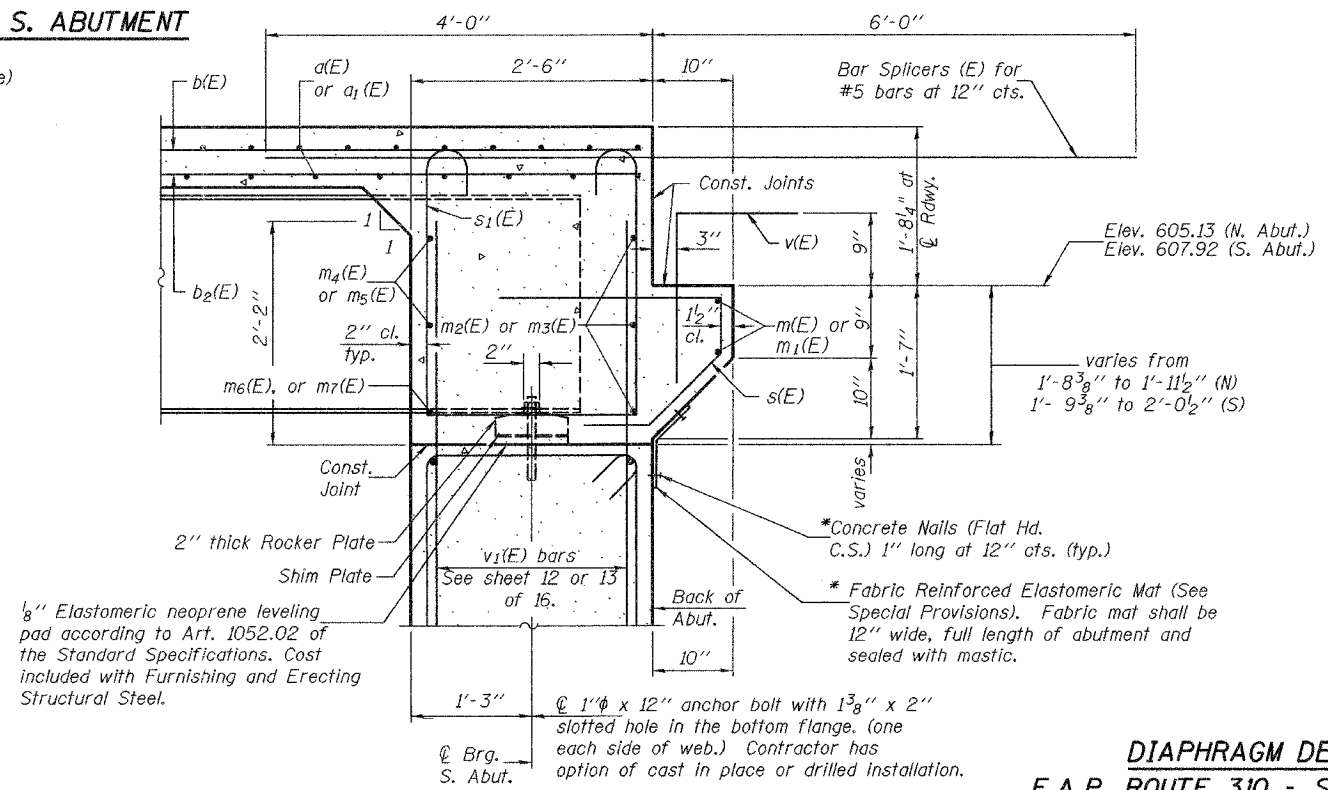
Contract #72528



MIN. BAR LAP
#6 bar = 2'-9"

DIAPHRAGM ELEVATION AT S. ABUTMENT
(Looking South)
(North Abut. mirror image)

Notes: Reinforcement bars in diaphragm are billed with superstructure on sheet 7 of 16.
Concrete in diaphragm is included with Concrete Superstructure on sheet 7 of 16.
For details of bars s(E) & s₁(E) see sheet 7 of 16.
The s(E) and s₁(E) bars shall be placed parallel to the beams. Spacing for these bars shall be at right angles to the beams.
For anchor bolt details see sheet 11 of 16.
See sheet 15 of 16 for Bar Splicers details.
See sheet 9 of 16 for location of holes thru webs for m₄(E) or m₅(E) bars.
Bars indicated thus 2x3-#6 etc. indicates 2 lines of bars with 3 bars per length.



SECTION A-A

* Cost included with Concrete Structures.

DIAPHRAGM DETAILS
F.A.P. ROUTE 310 - SECTION 81B-1
MORGAN COUNTY
STATION 140+34.43
STRUCTURE NO. 069-0504

DESIGNED	A.B.G.
CHECKED	W.A.B.
DRAWN	OMC Frank Lowry
CHECKED	A.B.G. & W.A.B.

September 30, 2005
EXAMINED *Thomas J. Domagalala*
ENGINEER OF BRIDGE DESIGN
PASSED *Ralph E. Anderson*
ENGINEER OF BRIDGES AND STRUCTURES