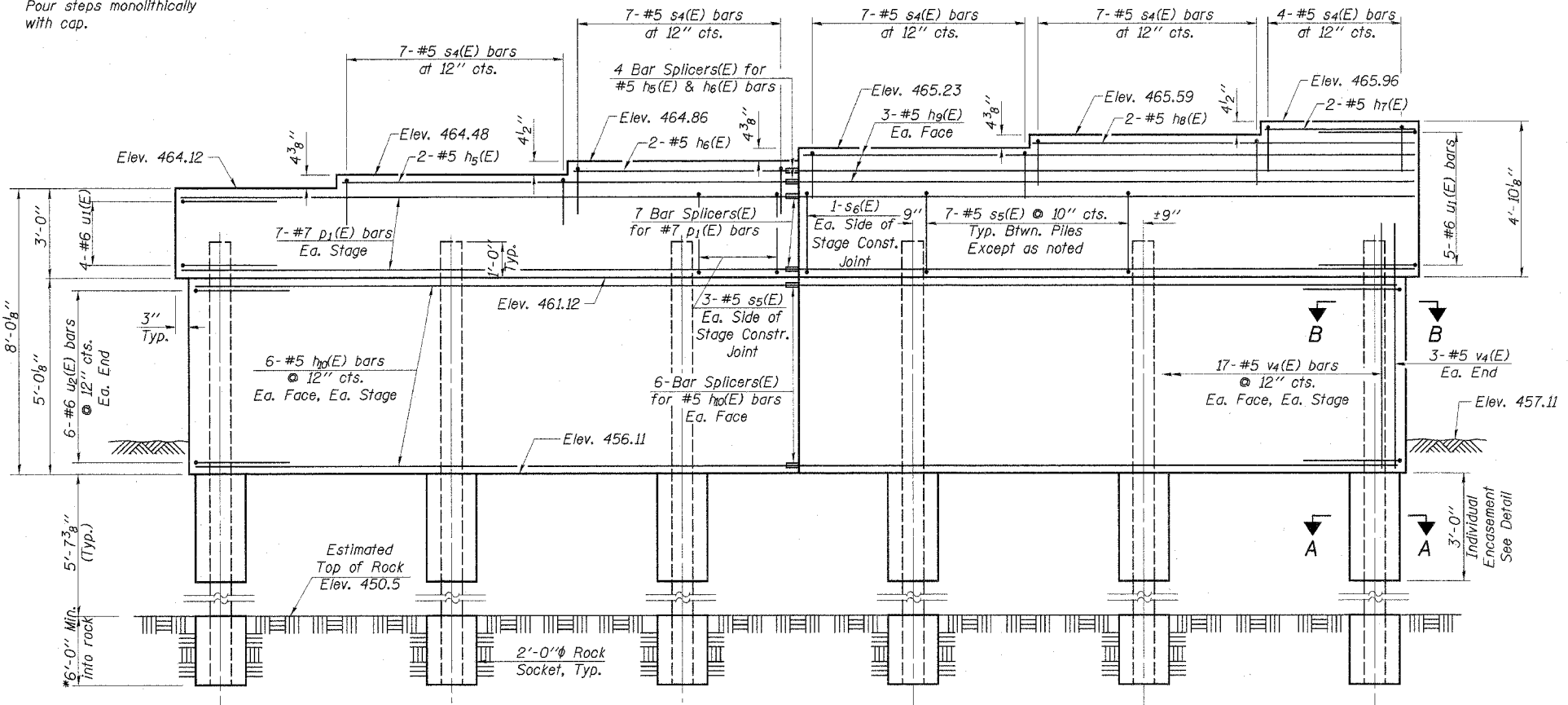


TOP PLAN

Notes: Space reinforcement in cap to miss anchor bolts. Pour steps monolithically with cap.

See Sheet 11 of 20 for Anchor Bolt Details



ELEVATION
(Looking Northeast)

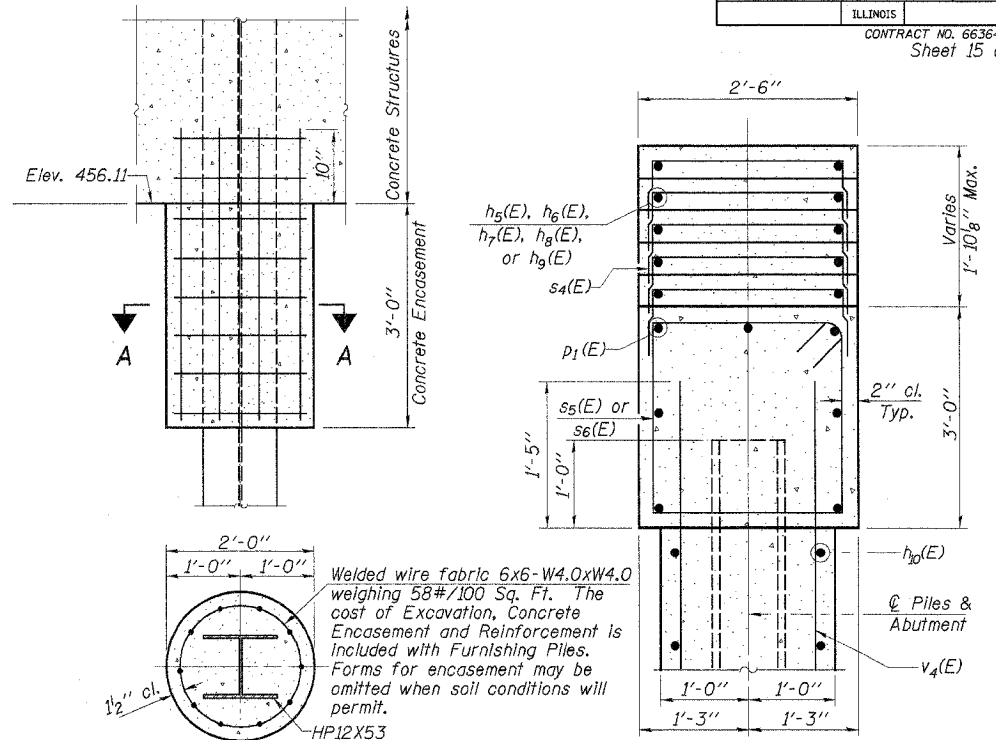
*Concrete included in price for setting piles in rock. See Special Provisions.

DESIGNED	P.S.L.
CHECKED	A.R.K. & F.J.S.
DRAWN	K.T.R.
CHECKED	P.S.L. & A.R.K.

Pile Data

Type	Steel HP12x53
Capacity	Set piles in Rock (See Note A)
Est. Length	18 Feet
No. Required	6

Note A: Precore through the existing earth and rock as shown. Piles shall be grouted into the rock with class SI concrete. Precored holes shall be clean at the time of placement and grouting. See Special Provisions.

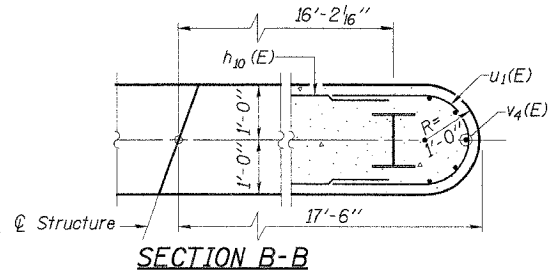


SECTION A-A
PILE ENCASEMENT DETAIL

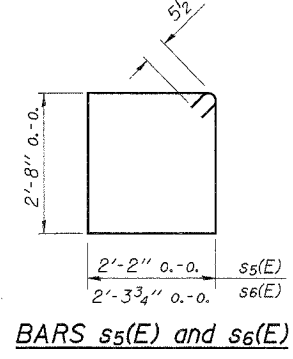
SECTION THRU PIER
At Rt. L's
BILL OF MATERIAL

Bar	No.	Size	Length	Shape
h2(E)	2	#5	12'-2"	—
h6(E)	2	#5	5'-9"	—
h7(E)	2	#5	3'-4"	—
h8(E)	2	#5	8'-8"	—
h9(E)	6	#5	15'-11"	—
h9(E)	24	#5	15'-8"	—
p1(E)	14	#7	16'-0"	—
s4(E)	32	#5	4'-2"	□
s5(E)	34	#5	10'-7"	□
s6(E)	2	#5	10'-11"	□
u1(E)	9	#6	8'-5"	U
u2(E)	12	#6	7'-8"	U
v4(E)	74	#5	6'-3"	—
Bar Splicers			Each	23
Structure Excavation			Cu. Yd.	9
Concrete Structures			Cu. Yd.	25.5
Reinforcement Bars, Epoxy Coated			Pound	2280
Furnishing Steel Piles HP12X53			Foot	108
Setting Piles in Rock			Each	6
Underwater Structure Excavation Protection Location 1			Each	1

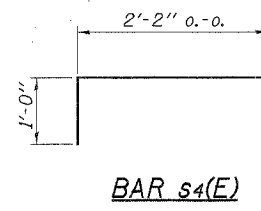
Reinforcement bars designated (E) shall be epoxy coated



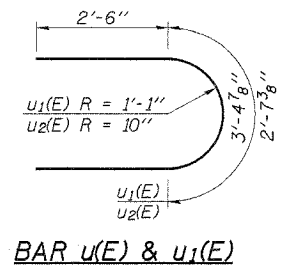
SECTION B-B



BARS s5(E) and s6(E)



BAR s4(E)



BAR u(E) & u1(E)

PIER

IL. RTE. 71 OVER UNNAMED STREAM
F.A.P. ROUTE 627 - SECTION 1BR
LaSALLE COUNTY
STA. 14+08.00
STR. NO. 050-0244

4440 ASH GROVE SPRINGFIELD, IL 62711 (217) 793-8600 oasinc@amvid.com	OZYURT AND STONE, INC. CONSULTING ENGINEERS	JOB NO.: 0306.4 FILE: PIER01.DGN DATE: 08-31-04
---	---	---