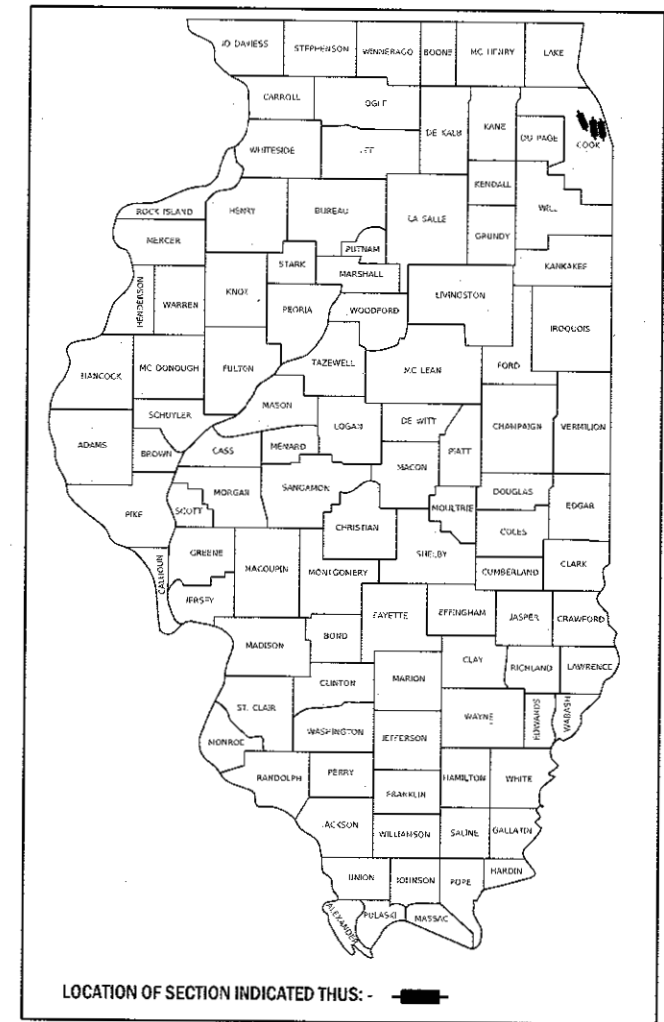


STATE OF ILLINOIS
DEPARTMENT OF TRANSPORTATION

FAI RTE.	SECTION	COUNTY	TOTAL SHEETS	SHEET NO.
90	2017-026BP	COOK	*21	1
		ILLINOIS	CONTRACT NO. 62F42	

*21 + 3 = 24 total sheets

D-91-293-17



FOR INDEX OF SHEETS, SEE SHEET NO. 2

PROJECT IS LOCATED IN THE CITY OF CHICAGO

TRAFFIC DATA

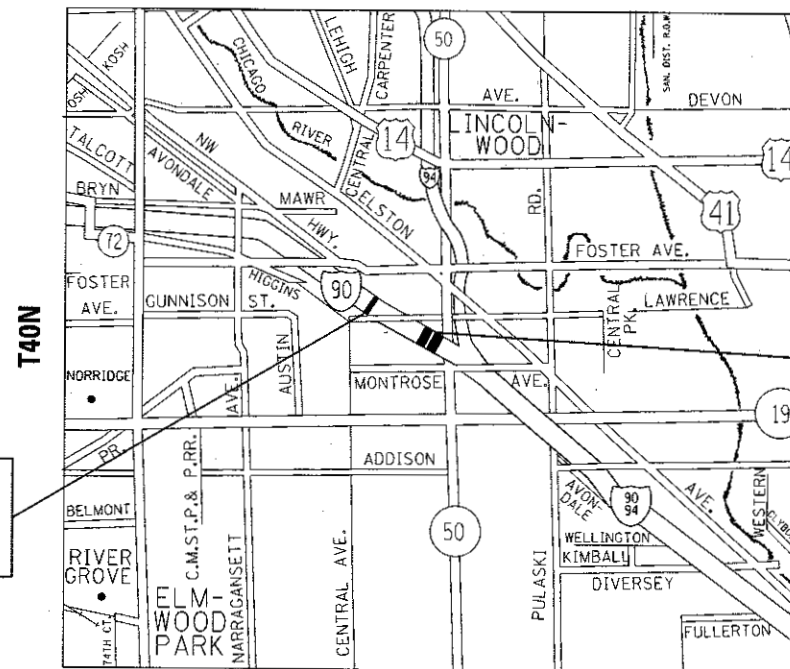
2016 ADT = 162,600 (I-90)

POSTED SPEED LIMIT = 55 MPH (I-90)

PROPOSED HIGHWAY PLANS

FAI ROUTE 90: I-90 (KENNEDY EXPY.)
AT UP & METRA RR
SECTION: 2017-026BP
BRIDGE PAINTING
COOK COUNTY

PROJECT NHPP-TMSR(013)
C-91-293-17
R13E



IMPROVEMENT LOCATION 1:
I-90 AT UP RR
SN: 016-0515

IMPROVEMENT LOCATION 2 & 3:
2) I-90 AT METRA RR
SN: 016-0516

3) I-90 AT UP & METRA RR
SN: 016-0517

C.U.A.N.
CHICAGO UTILITY ALERT NETWORK

1-312-744-7000

PROJECT ENGINEER: J. ALAIN MIDY (847) 221-3056
PROJECT MANAGER: ISSAM RAYYAN (847) 705-4178

CONTRACT NO. 62F42

STATE OF ILLINOIS
DEPARTMENT OF TRANSPORTATION

SUBMITTED August 15, 2017

Anthony J. Quigley / 193
REGIONAL ENGINEER

Oct 13, 2017
Maureen M. Addis / 193
ENGINEER OF DESIGN AND ENVIRONMENT

Oct 13, 2017
DIRECTOR OF PROGRAM DEVELOPMENT

PRINTED BY THE AUTHORITY
OF THE STATE OF ILLINOIS

REV

INDEX OF SHEETS

1. TITLE SHEET
2. INDEX OF SHEETS, STATE STANDARDS, GENERAL NOTES AND GENERAL PAINT NOTES
3. SUMMARY OF QUANTITIES
- 4-7. EXISTING BRIDGE PLANS (SN 016-0515)
- 8-11. EXISTING BRIDGE PLANS (SN 016-0516)
- * 12-17. EXISTING BRIDGE PLANS (SN 016-0517)
18. ENTRANCE AND EXIT RAMP CLOSURE DETAILS (TC-08)
19. SINGLE AND MILTI-LANE WEAVE (TC-09)
20. TRAFFIC CONTROL FOR SHOULDER CLOSURES AND PARTIAL RAMP CLOSURES (TC-17)
21. FREEWAY/EXPRESSWAY SIGNING FOR FLAGGING OPERATIONS AT WORK ZONE OPENINGS ON FREEWAYS/EXPRESSWAYS (TC-18)

* includes 13A - 13C

STATE STANDARDS

STANDARD NO.	DESCRIPTION
701400-09	APPROACH TO LANE CLOSURE, FREEWAY/EXPRESSWAY
701401-10	LANE CLOSURE, FREEWAY/EXPRESSWAY
701411-09	LANE CLOSURE, MULTILANE, AT ENTRANCES OR EXIT RAMP, FOR SPEEDS >= 45 MPH
701428-01	TRAFFIC CONTROL SETUP AND REMOVAL FREEWAY/EXPRESSWAY
701446-08	TWO LANE CLOSURE, FREEWAY/EXPRESSWAY
701901-06	TRAFFIC CONTROL DEVICES

GENERAL NOTES

BEFORE STARTING ANY EXCAVATION, THE CONTRACTOR SHALL CALL "C.U.A.N." AT (312) 744-7000 FOR FIELD LOCATIONS OF BURIED ELECTRIC, TELEPHONE AND GAS UTILITIES. 48 HOUR NOTIFICATION IS REQUIRED.

THE CONTRACTOR SHALL COORDINATE CONSTRUCTION ACTIVITIES WITH UTILITY COMPANIES, AND THE CITY OF CHICAGO.

PLAN DIMENSIONS AND DETAILS RELATIVE TO EXISTING PLANS ARE SUBJECT TO NOMINAL CONSTRUCTION VARIATIONS. THE CONTRACTOR SHALL FIELD VERIFY EXISTING DIMENSIONS AND DETAILS AFFECTING NEW CONSTRUCTION AND MAKE NECESSARY APPROVED ADJUSTMENTS PRIOR TO CONSTRUCTION OR ORDERING OF MATERIALS. SUCH VARIATIONS SHALL NOT BE CAUSE FOR ADDITIONAL COMPENSATION FOR A CHANGE IN SCOPE OF THE WORK, HOWEVER, THE CONTRACTOR WILL BE PAID FOR THE QUANTITY ACTUALLY FURNISHED BASED AT THE UNIT PRICE BID FOR THE WORK.

THE CONTRACTOR WILL NOT BE ALLOWED TO SET UP A YARD OR FIELD OFFICE ON STATE PROPERTY WITHOUT WRITTEN PERMISSION FROM THE DEPARTMENT.

THE CONTRACTOR SHALL CONTACT THE DISTRICT ONE TRAFFIC CONTROL SUPERVISOR AT (847) 705-4151 A MINIMUM OF 72 HOURS IN ADVANCE OF BEGINNING WORK.

IT SHALL BE THE CONTRACTOR'S RESPOSIBILITYTO PROTECT AND MAINTAIN THE EXISTING BRIDGE LIGHTING AT ANY LOCATIONS THAT LIGHTING IS ENCOUNTERED ADJACENT TO AN AREA TO BE CLEANED AND PAINTED.

THE CONTRACTOR SHALL BE REQUIRED TO PROVIDE ACCESS TO ABUTTING PROPERTY AT ALL TIMES DURING THE CONSTRUCTION OF THIS PROJECT.

WHEN ARTIFICIAL LIGHTING IS UTILIZED IN NIGHTTIME OPERATIONS, THE CONTRACTOR SHALL EXERCISE THE UTMOST PRECAUTIONS PREVENTING ADVERSE VISIBILITY TO THE MOTORING PUBLIC AND ADJACENT RESIDENTIAL AREAS.

THESE PLANS HAVE BEEN PREPARED FROM NOTES RECEIVED FROM THE BUREAU OF MAINTENANCE BRIDGE INSPECTORS.

DO NOT SCALE PLANS FOR CONSTRUCTION DIMENSIONS.

GENERAL PAINT NOTES

SN 016-0515 & SN 016-0516

CLEANING AND PAINTING OF THE EXISTING STRUCTURAL STEEL SHALL BE AS SPECIFIED IN THE SPECIAL PROVISION FOR "CLEANING AND PAINTING EXISTING STEEL STRUCTURES".

ALL BEAMS, BEARINGS AND OTHER STRUCTURAL STEEL SHALL BE CLEANED PER NEAR WHITE BLAST CLEANING - SSPC-SP10. THESE AREAS SHALL BE PAINTED ACCORDING TO THE REQUIREMENTS OF PAINT SYSTEM 1 -02/E/U. THE COLOR OF THE FINAL FINISH COAT FOR ALL INTERIOR STEEL SURFACES SHALL BE GRAY, MUNSELL NO 5B 7/1. THE COLOR OF THE FINAL FINISH COAT FOR THE EXTERIOR AND BOTTOM FLANGE OF THE FASCIA BEAMS SHALL BE REDDISH BROWN, MUNSELL NO 2.5YR 3/4.

ALL ITEMS (SUCH AS, BUT NOT LIMITED TO: CONDUITS, BRACKETS AND DECK DRAINS) ATTACHED TO OUTSIDE OF THE FASCIA BEAMS SHOULD BE CLEANED AND PAINTED.

A MINIMUM OF TWO (2) AIR MONITORS AT EACH LOCATION WILL BE REQUIRED TO MONITOR ABRASIVE BLASTING OPERATIONS. SEE SPECIAL PROVISIONS FOR "CONTAINMENT AND DISPOSAL OF LEAD PAINT CLEANING RESIDUES."

SN 016-0517

CLEANING AND PAINTING OF THE EXISTING STRUCTURAL STEEL SHALL BE AS SPECIFIED IN THE SPECIAL PROVISION FOR "CLEANING AND PAINTING EXISTING STEEL STRUCTURES".

ALL EXISTING STRUCTURAL STEEL WITHIN 4 FT. (MEASURED FROM THE BOTTOM FLANGE) SHALL BE CLEANED PER NEAR WHITE BLAST CLEANING - SSPC-SP10.

ALL EXTERIOR STEEL SURFACES, TOP AND BOTTOM OF THE BOTTOM FLANGE OF THE FASCIA BEAMS SHALL BE CLEANED PER NEAR WHITE BLAST CLEANING - SSPC-SP10.

ALL BEARINGS SHALL BE CLEANED PER NEAR WHITE BLAST CLEANING - SSPC-SP10.

THESE AREAS SHALL BE PAINTED ACCORDING TO THE REQUIREMENTS OF PAINT SYSTEM 1 -02/E/U. THE COLOR OF THE FINAL FINISH COAT FOR ALL INTERIOR STEEL SURFACES SHALL BE GRAY, MUNSELL NO 5B 7/1. THE COLOR OF THE FINAL FINISH COAT FOR THE EXTERIOR AND BOTTOM FLANGE OF THE FASCIA BEAMS SHALL BE REDDISH BROWN, MUNSELL NO 2.5YR 3/4.

ALL ITEMS (SUCH AS, BUT NOT LIMITED TO: CONDUITS, BRACKETS AND DECK DRAINS) ATTACHED TO OUTSIDE OF THE FASCIA BEAMS SHOULD BE CLEANED AND PAINTED.

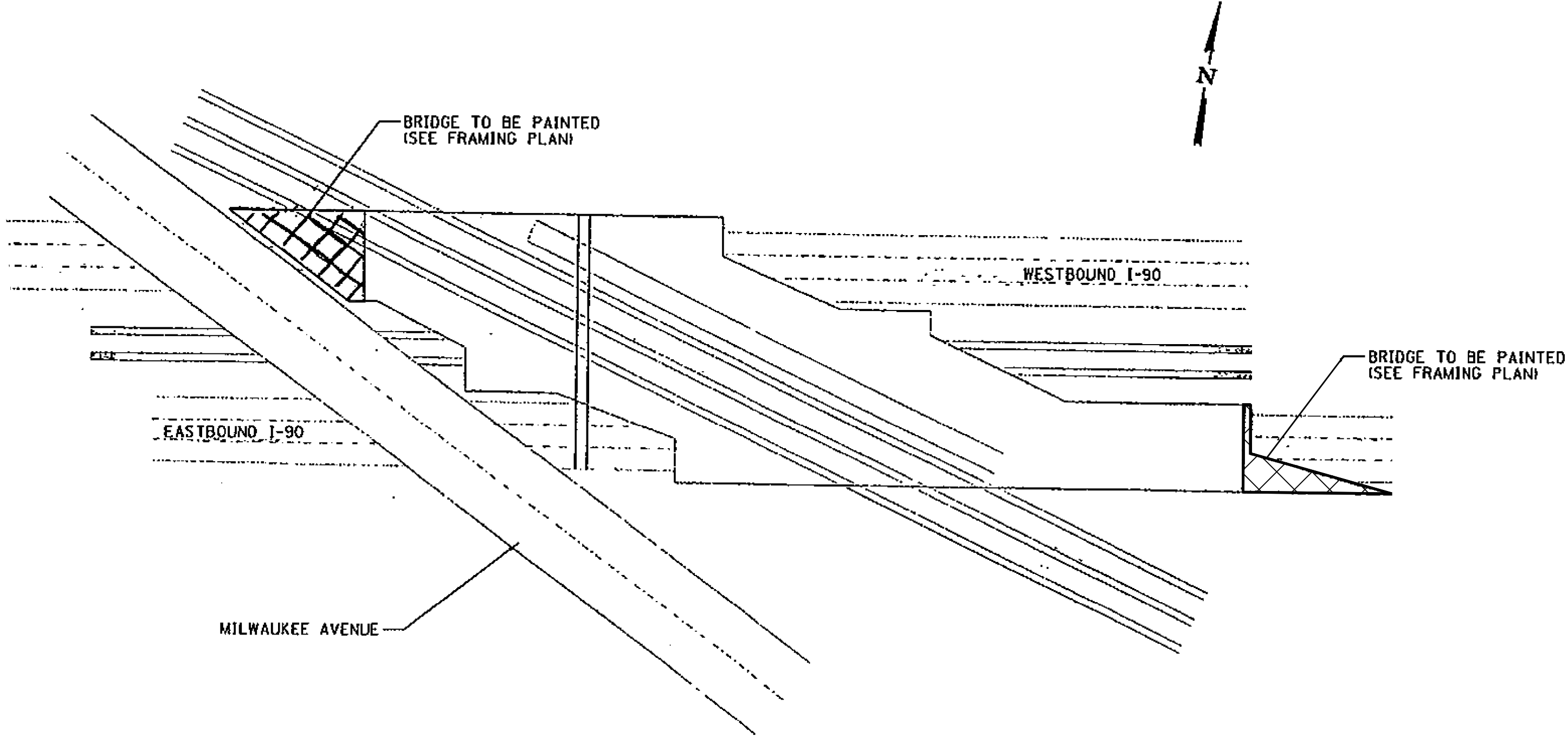
A MINIMUM OF TWO (2) AIR MONITORS WILL BE REQUIRED TO MONITOR ABRASIVE BLASTING OPERATIONS. SEE SPECIAL PROVISIONS FOR "CONTAINMENT AND DISPOSAL OF LEAD PAINT CLEANING RESIDUES."

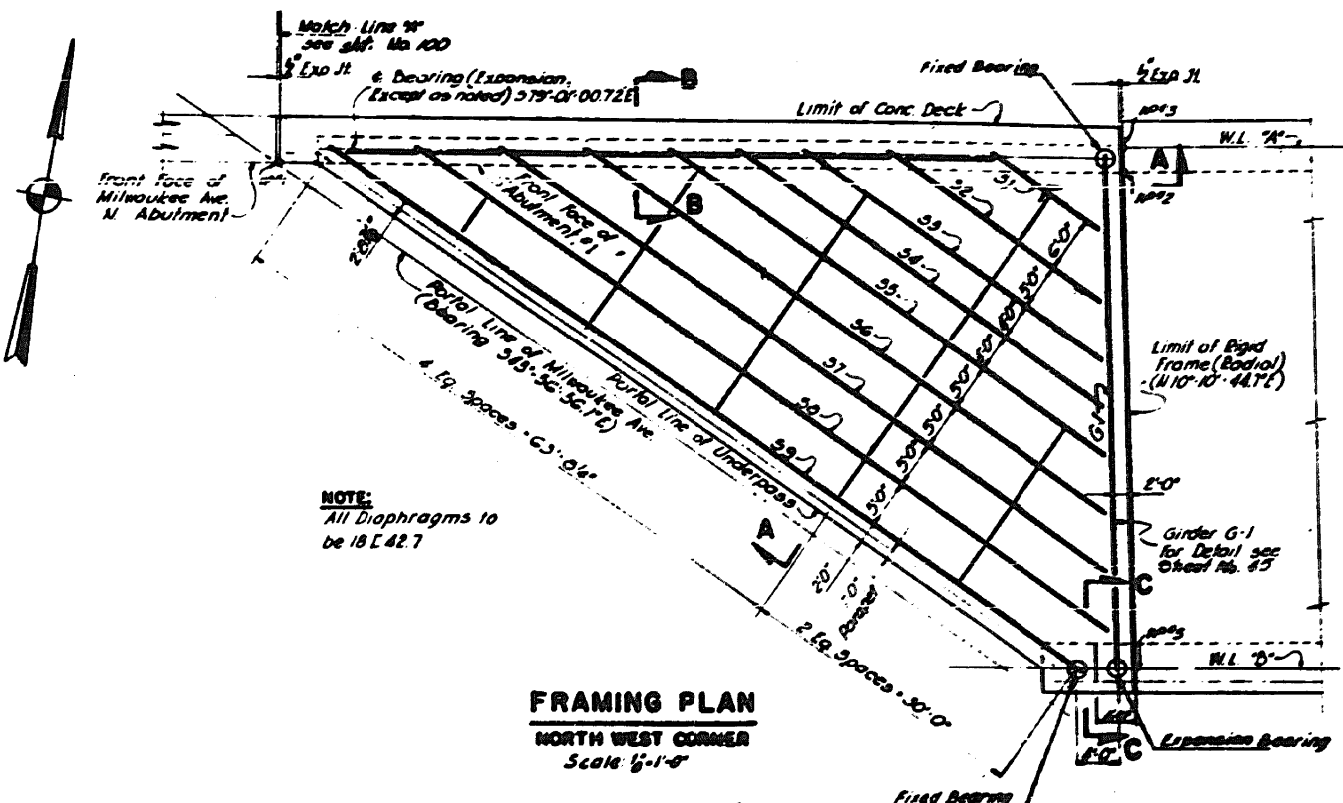
FILE NAME =	USER NAME = diaz	DESIGNED -	REVISED -	STATE OF ILLINOIS DEPARTMENT OF TRANSPORTATION	INDEX OF SHEETS, STATE STANDARDS, GENERAL NOTES AND GENERAL PAINT NOTES			F.A.I. RTE.	SECTION	COUNTY	TOTAL SHEETS	SHEET NO.
p:\IL\084E01D\ITEG\Illinois.gov\FW\DOT\Documents\DOT Offices\District 1\Projects\0123456789\Drawings\Design\9129317-shr-plan.dgn		CHECKED -	REVISED -					90	2017-0268P	COOK	21	2
Default	PLOT SCALE = 100.0000' / 1in	DATE -	REVISED -					CONTRACT NO. 62F42				
	PLOT DATE = 8/22/2017							ILLINOIS FED. AID PROJECT				
				SCALE:			SHEET 1	OF 1	SHEETS	STA.	TO STA.	

REV

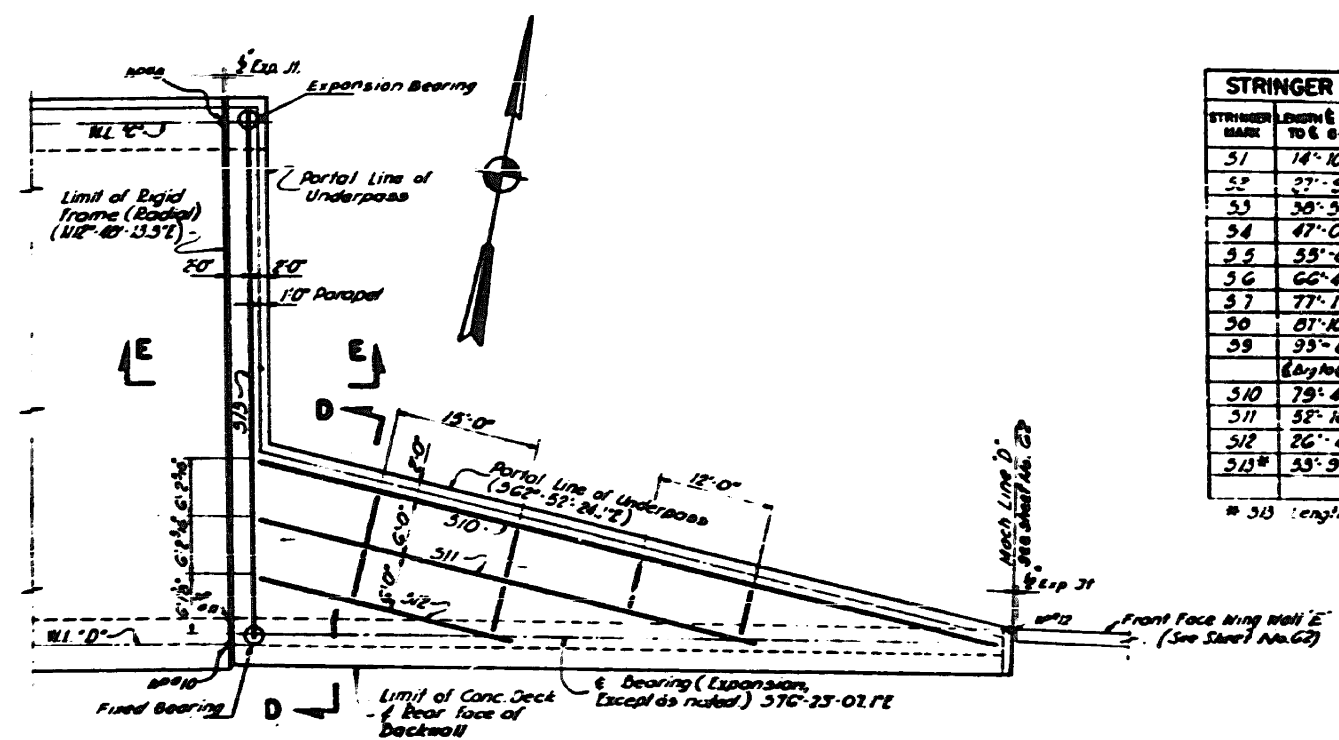
URBAN 90/10 (FED/STATE)

9





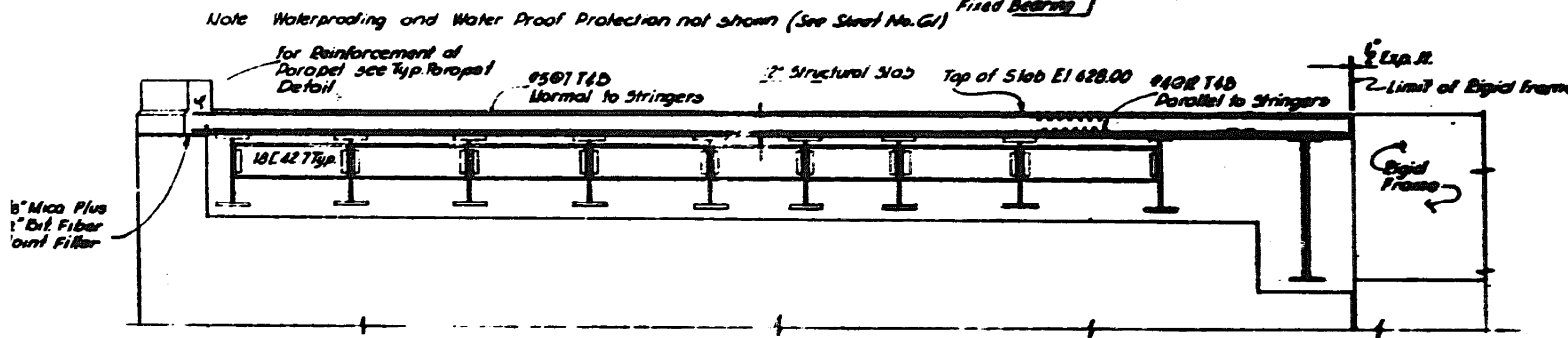
FRAMING PLAN
NORTH WEST CORNER
Scale: 1/4"=1'-0"



FRAMING PLAN
SOUTH EAST CORNER
Scale: 1/4"=1'-0"

STRINGER SCHEDULE		
STRINGER MARK	LENGTH & BEAR TO E 64	SIZE
31	14'-10 1/2"	36 WF 260
32	27'-9"	36 WF 260
33	38'-5 1/2"	36 WF 300
34	47'-0 1/2"	36 WF 300
35	55'-8"	36 WF 300
36	66'-4 1/2"	36 WF 260
37	77'-1 1/4"	36 WF 260
38	87'-10 1/2"	36 WF 260
39	95'-8 1/4"	36 WF 300
Elongations		
310	79'-4 1/2"	36 WF 230
311	52'-10 1/4"	30 WF 184
312	26'-0 1/2"	24 WF 100
313	53'-9 1/2"	36 WF 300

313 Length & Brg. to & Brg.

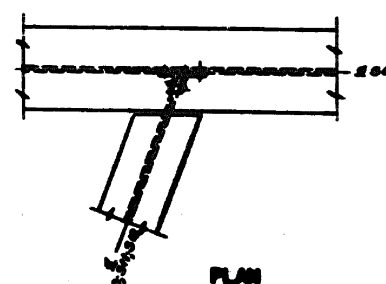
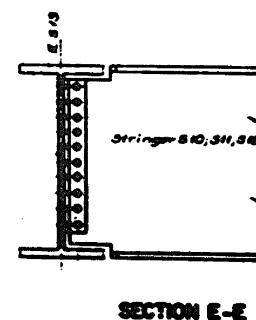
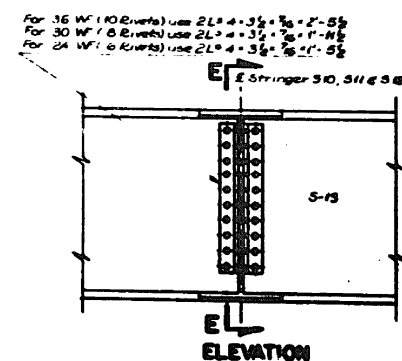
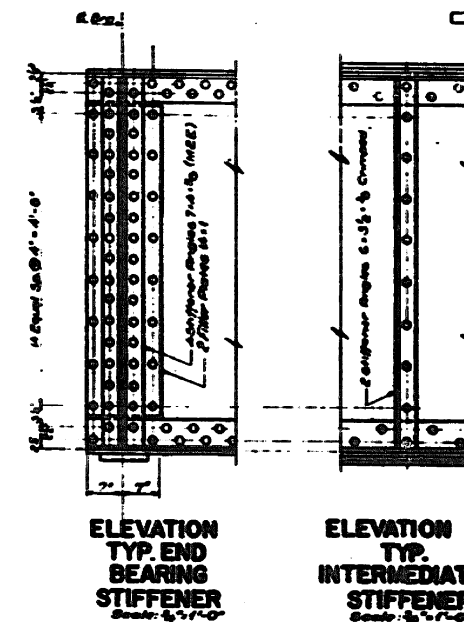
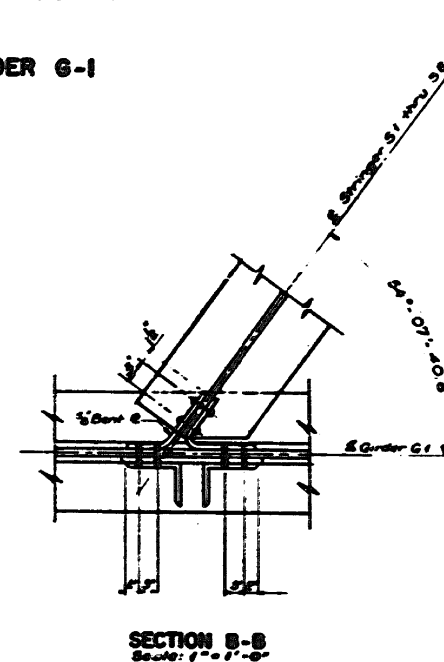
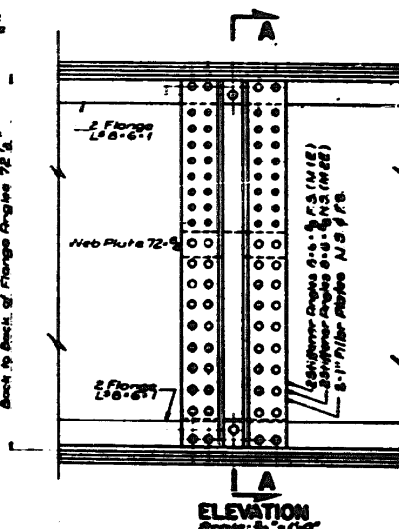


SECTION A-A
Scale: 1/4"=1'-0"

**STATE OF ILLINOIS
DEPARTMENT OF TRANSPORTATION**

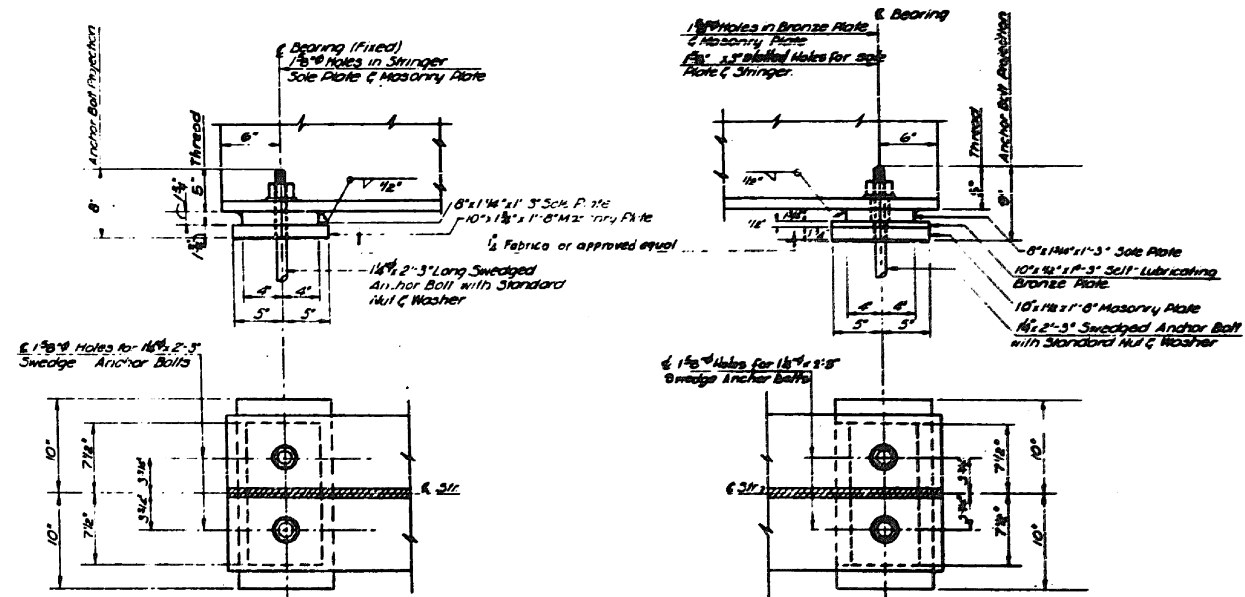
SCALE:	SHEET 3	OF 4	SHEETS	STA.	TO STA.
--------	---------	------	--------	------	---------

ILLINOIS	FED. AID PROJECT
----------	------------------



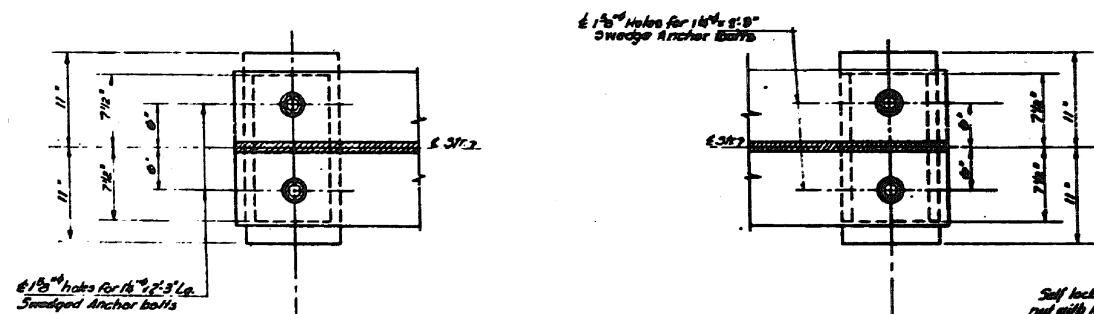
FILE NAME =	USER NAME = diazio	DESIGNED -	REVISED -
p:\NL084EBID\INTEG.Illinois.gov\PIDOT\Documents\IDOT Offices\District 1\Projects\DI2937\DWG\DI2937-1-shr-plan.dgn		DATE = 8/22/2017	REVISED -
Default	PLOT SCALE = 100.0000' / in.	CHECKED -	REVISED -
	PLOT DATE = 8/22/2017	DATE -	REVISED -

FOR INFORMATION ONLY

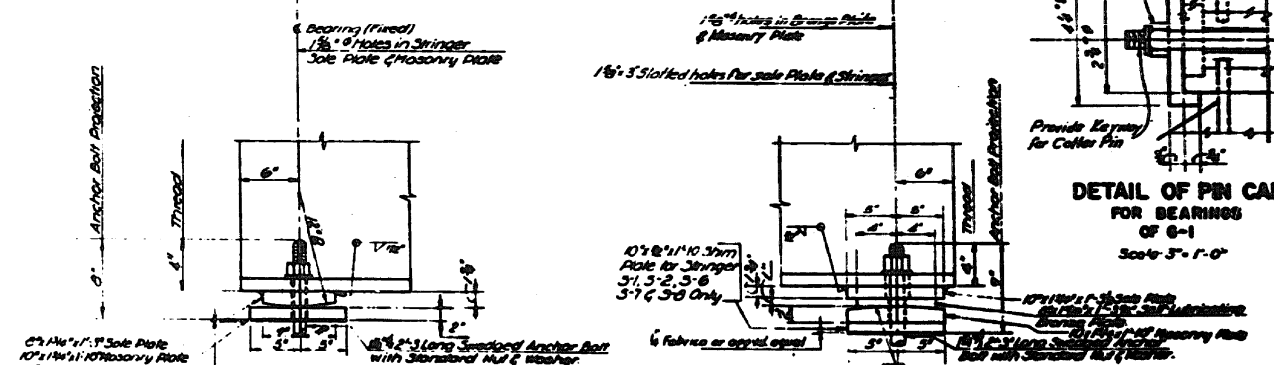


FIXED BEARING
FOR S-13
NO. REQUIRED 1
Scale 1 1/2" = 1'-0"

EXPANSION BEARING
FOR S-D THRU S-B
NO. REQUIRED 4
Scale 1/2" = 1'-0"

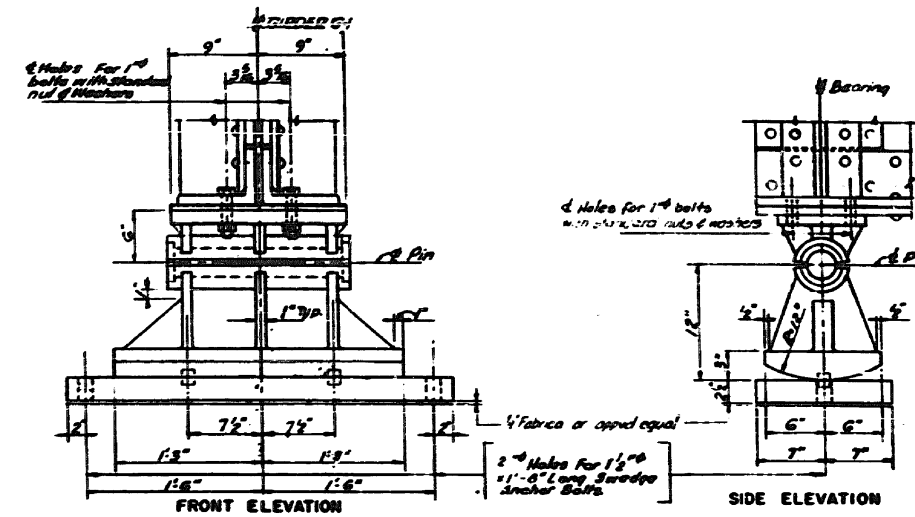


4' 8" holes for 1 1/2" x 3"
Swaged Anchor bolts

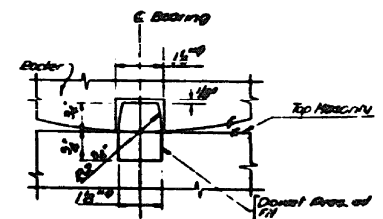


**FIXED BEARING
FOR 8-9
NO. REQUIRED 1
Scale 1/4" = 1'-0"**

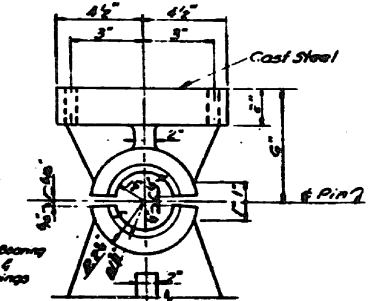
EXPANSION BEARING
FOR 2-1 THRU 2-9
NO. REQUIRED 9
Scale 1/2" = 1'-0"



EXPAN. BEARING
FOR 6-I
NO. REQUIRED 1
Scale 1/2"=1'-0"



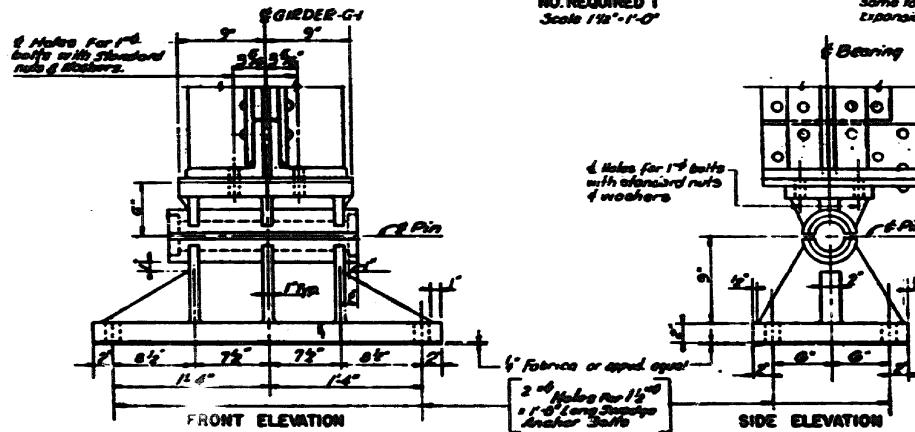
PINTLE DETAIL
Scale 6" = 1'-0"



DETAIL OF UPPER BEARING
Scale 3" = 1'-0"

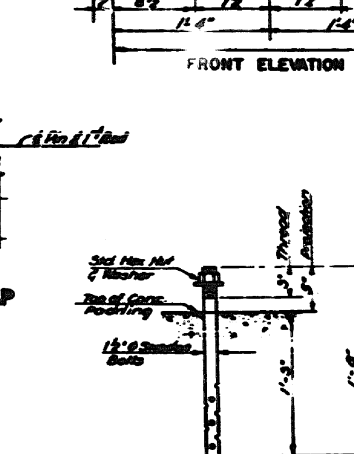


PIN DETAIL
Scale 1/2" = 1'-0"



FIXED BEARING
FOR G-1
NO. REQUIRED 1
Scale 1/2" = 1'-0"

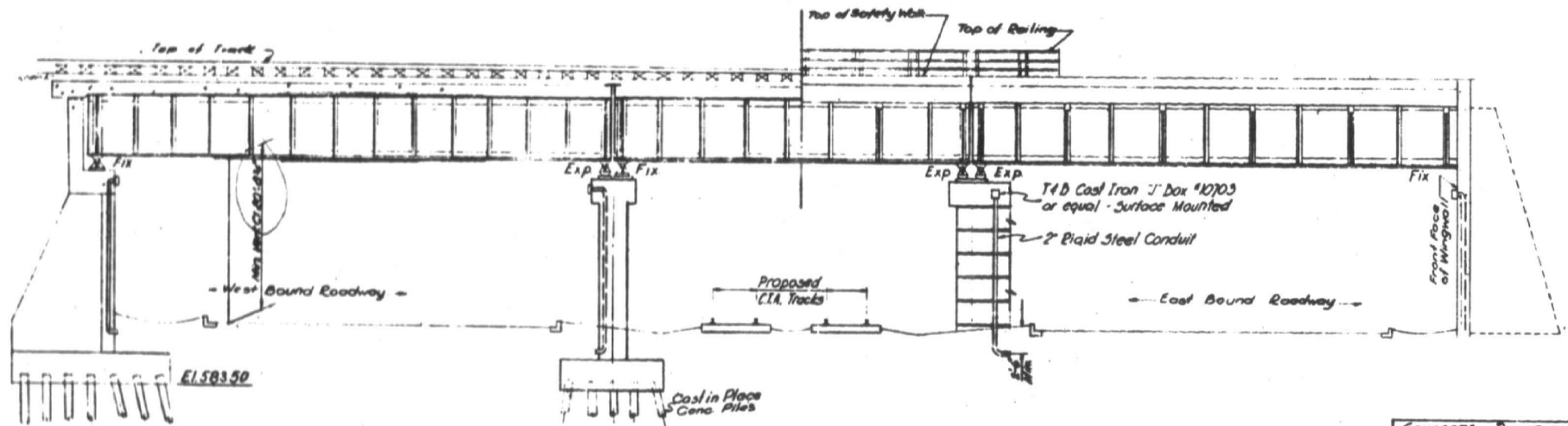
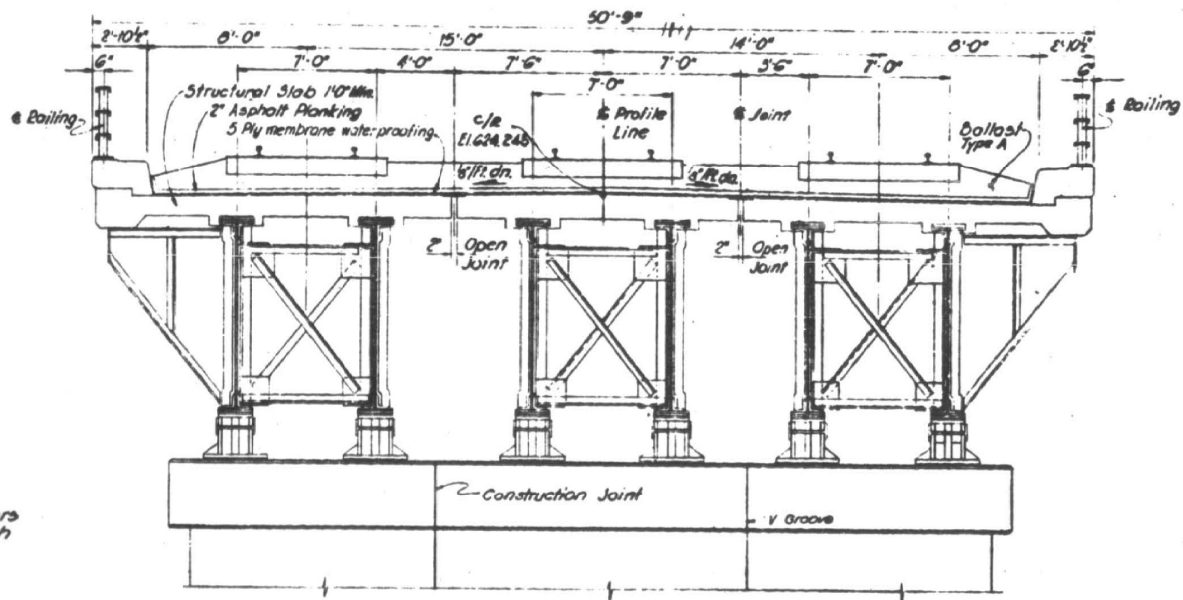
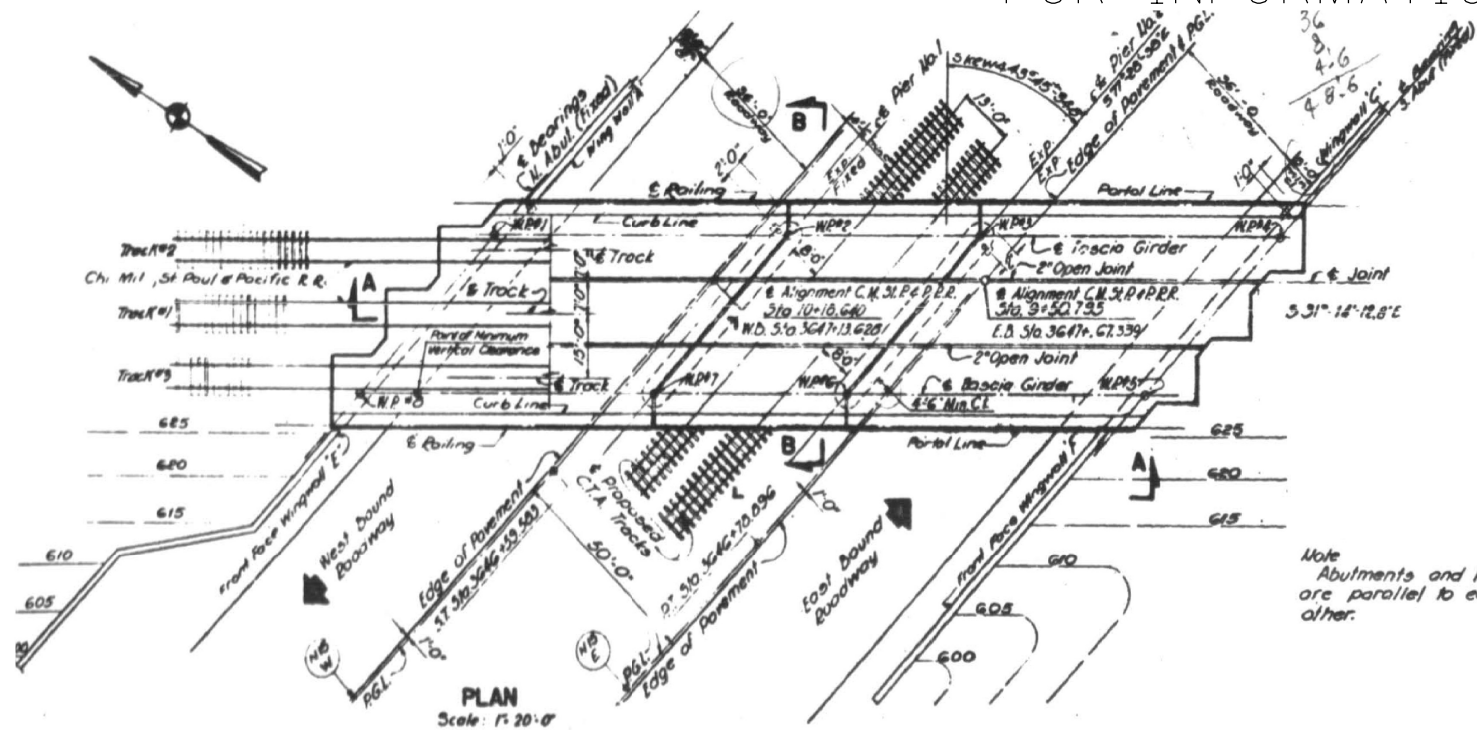
1. Bolt holes in casting to be drilled to match template, banded, and spot face. Template to be furnished to subcontractor.
2. Bearing to be shop examined and marked inside.
3. Bearings to be checked for full bearing.
4. Specifications for Structural Steel for bearing and girders to be AISC-A7 Steel Castings shall conform to grade 652 of the ASTM-A21 specifications. Pins shall conform to ASTM-A235 Class F.
5. Overlap holes in base B and casting, take place after a minimum of 48 hours after a joining of bearings & girder and before anchor bolts are tightened.



TYPICAL ANCHOR BOLT-DETAIL
FOR GIRDER 6-3
NO. REQUIRED 6
Scale 1/4"=1'-0"

FILE NAME =	USER NAME = dnoia	DESIGNED -	REVISED -	<div>STATE OF ILLINOIS DEPARTMENT OF TRANSPORTATION</div>	LOC. 1) SN 016-0515 I-90 (KENNEDY EXPY.) AT UP RR & PEDWAY				F.A.I. RTE.	SECTION	COUNTY	TOTAL SHEETS	SHEET NO.
p:\11084EBID\INTEG.Illinois.gov\PIDOT\Documents\DOT Offices\District 1\Projects\0129317\shp\plan.dgn	PROJECT = 0129317	DRAWN -	REVISED -		90	2017-026BP	COOK	21	7				
Default	PLOT SCALE = 100.0000' / in.	CHECKED -	REVISED -		CONTRACT NO. 62F42								
	PLOT DATE = 8/22/2017	DATE -	REVISED -		SCALE:	SHEET 4 OF 4 SHEETS	STA.	TO STA.		ILLINOIS	FED. AID PROJECT		

FOR INFORMATION ONLY

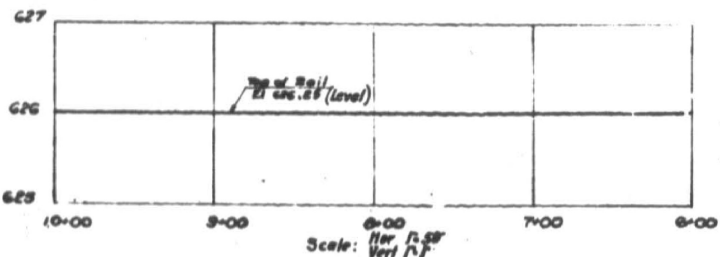
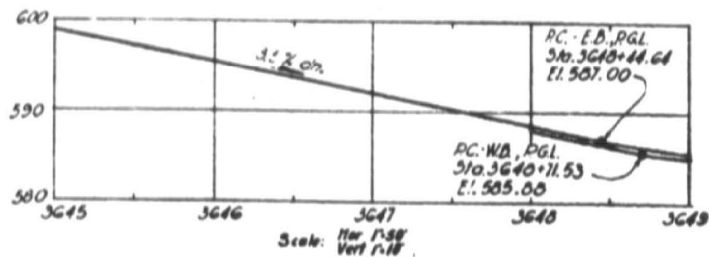


Half Longitudinal Elevation A-A
Scale: 1" = 10'-0"

GENERAL NOTES:

10) Surfaces of Concrete Walls, Piers, and Abutments exposed to public view after completion should be given a rubbed finish according to Art. 5114 (a) of the Standard Specifications. Structural Steel not in contact or in contact with concrete shall be given one shop coat

of Red Lead and oil paint by the steel fabricator and two coats of Aluminum paint by the Contractor.
11) Piles to be terminated into a strata where the unconfined compressive strength of the clay is 55 tons per square foot.

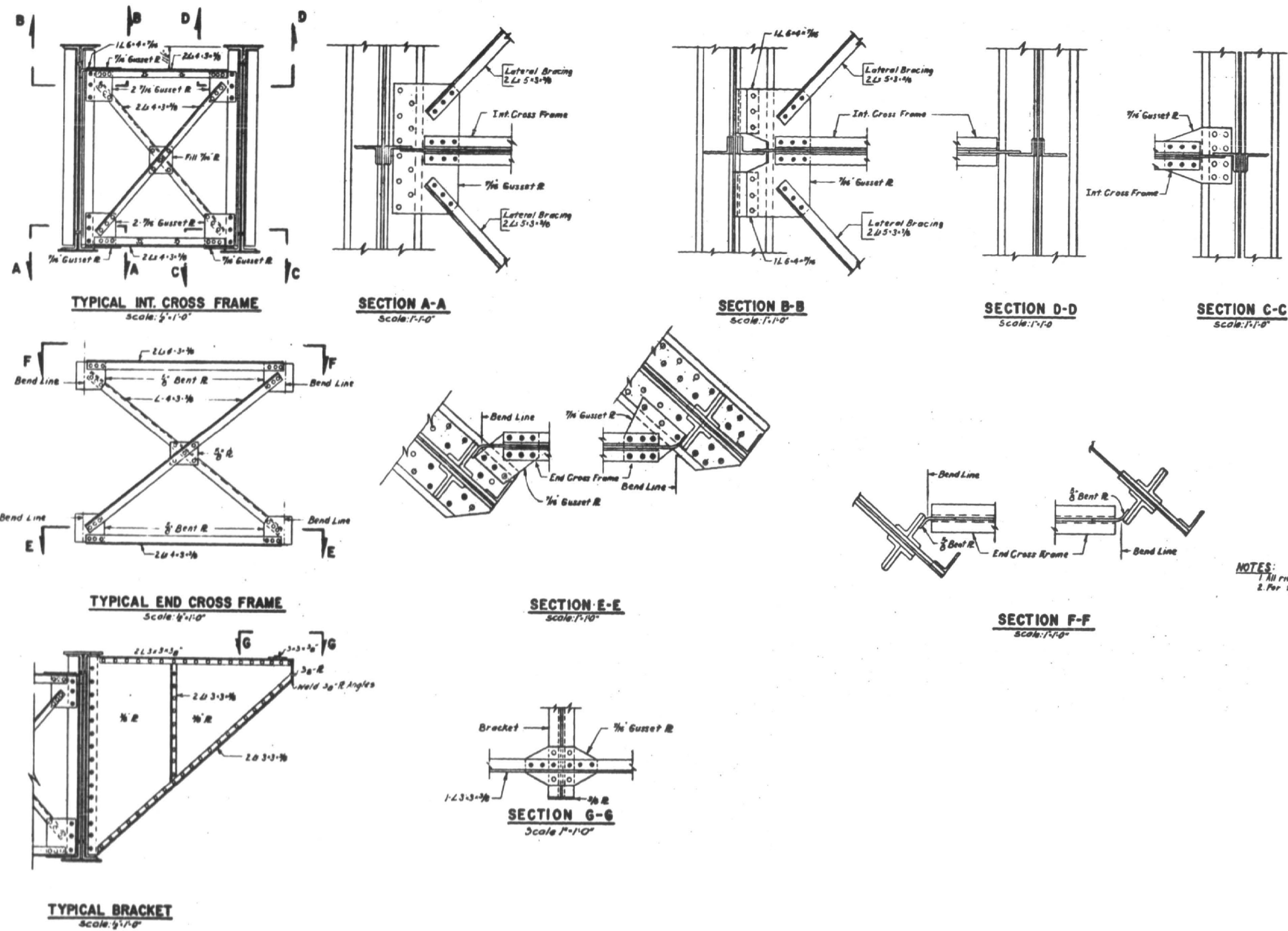


Concrete Distribution			
Location	Footings	Walls	Superstr.
S. Abutment	415	530	
N. Abutment	370	420	
Pier #1	200	240	
Pier #2	200	260	
Slab			540
Wingwall E	230	265	
Wingwall F	220	280	
Total	1,635	1,995	540

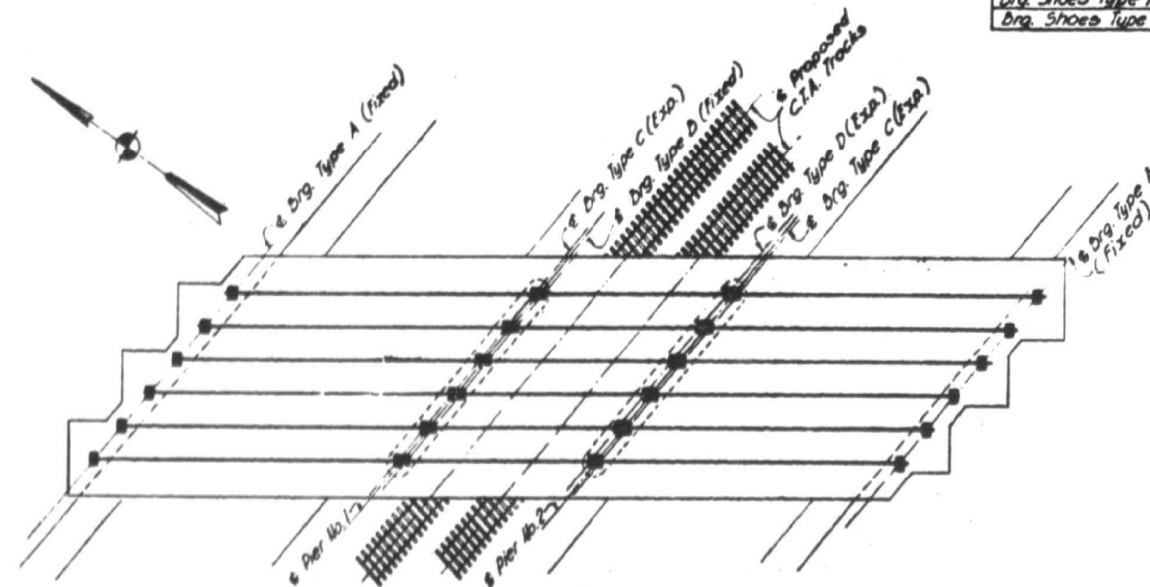
GENERAL NOTES:

- Design Specifications: A.R.E.A. Specifications 1986
- Loading: Cooper E 72
- Superstructure: Ballasted concrete slab on simply supported plate girders. All girders, brackets etc. to be in accordance to ASTM-A7 Structural Carbon Steel
- Concrete for Deck Slab, Abutments, & Piers to have a compressive strength at the end of 90 days of 3500 p.s.i.
- Reinforcing steel for concrete designed for a tensile strength of 10,000 p.s.i.
- Concrete Design Stresses:
Concrete without earth pressure 1900 p.s.i.
Concrete with earth pressure 800 p.s.i.
- Earth Pressure: 90 lbs per sq. ft. fluid
- Pile Capacity: 50 tons per pile
For details of concrete piles, see sheet 2104
- For Location & Log of Boring see sheet 2445

Waterproofing:
Banks of concrete structure resting against earth fill shall be waterproofed from 12" below top of backfill to top of footing, to conform to Art. 5120 of the Standard Specifications.



Shoe Types	Dia D	Dia X
Org. Shoes Type A & C	5"	8"
Org. Shoes Type B & D	6"	7"

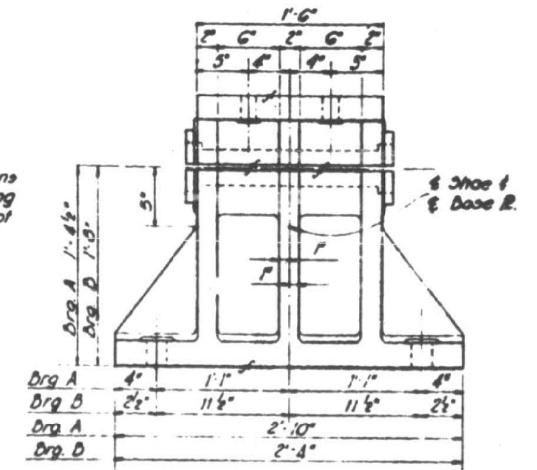


Technical drawing of a shoe and base plate assembly. The drawing shows a side view of a shoe (labeled 'Shoe') mounted on a base plate (labeled 'Base'). The shoe is secured by a self-locking nut or nut and lock washer. Dimensions are provided in inches:

- Overall height of the shoe: 6"
- Height of the base plate: 3"
- Height of the shoe's top section: 3"
- Height of the shoe's bottom section: 3"
- Width of the shoe's top section: 1"
- Width of the shoe's bottom section: 1"
- Width of the shoe's middle section: 1"
- Width of the shoe's base: 1"
- Width of the shoe's top flange: 1"
- Width of the shoe's bottom flange: 1"
- Width of the shoe's middle flange: 1"
- Width of the shoe's base flange: 1"
- Width of the shoe's top flange: 1"
- Width of the shoe's bottom flange: 1"
- Width of the shoe's middle flange: 1"
- Width of the shoe's base flange: 1"

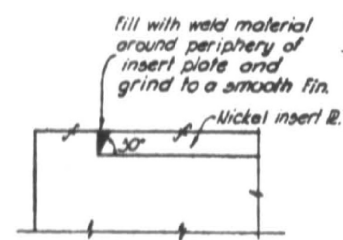
Labels include:

- Self locking nut or nut and lock washer
- Shoe
- Base
- Provide wayway for cotter pins

[illegible][illegible]

LOCATION	TYPE OF BEARING	DIAMETER OF PIN	PIN BEARING PRESSURES (P.S.I.)	ALLOW. BKG PRESS. P.S.I.
Aft. 1	Fixed	3"	9.63	12.00
	Exp.	3"	9.63	"
Aft. 2	Fixed	2 1/2"	0.70	"
	Exp.	2 1/2"	0.70	"
Aft. 3	Fixed	3"	9.63	12.00
	Exp.	3"	9.63	12.00

LOCATION	TYPE OF BEARING	AREA OF PLATE IN ²	BEARING PRESSURE (PSI)	ALLOW. BEAR. PRESS (PSI)
Abutts	Fixed	646	635	936
	Exp.	700	745	750*
Pier 1	Fixed	646	909	936
	Exp.	1000	746	750
Pier 2				



Note
 # Rod

DETAILS OF FIXED BEAR
 Scale 1/2" = 1'-0"

Brq. C
 Brq. D
 Brq. C
 Brq. D
 Brq. C
 Brq. D

Provide additional
 1/2" R for Exp. Shoe D

6 1/16" Holes
 for 1/2" # Bolts

6 Rocker &
 6 Base R.

Nickel Steel

Note: All dim's
 typical for Bear
 Shoes C & D, ex

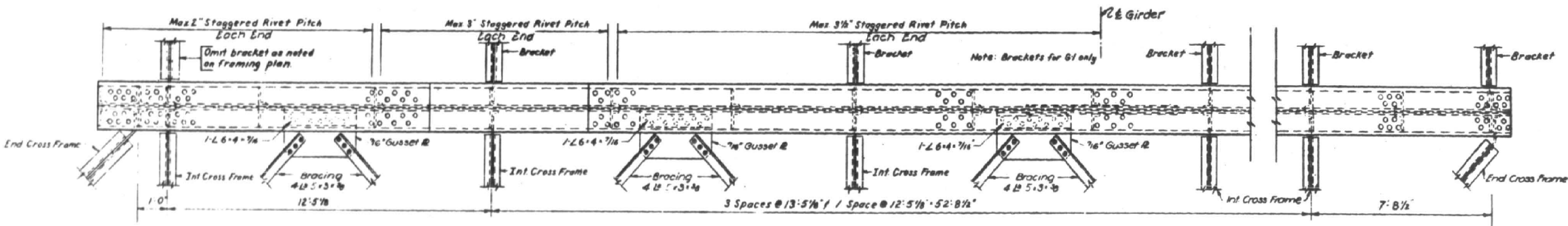
Nickel Insert Plate 14" x 1" x 2"

Note
 Base R. as shown
 Shoe at Pier No. 1. For
 R. Pier No. 2 see Det.

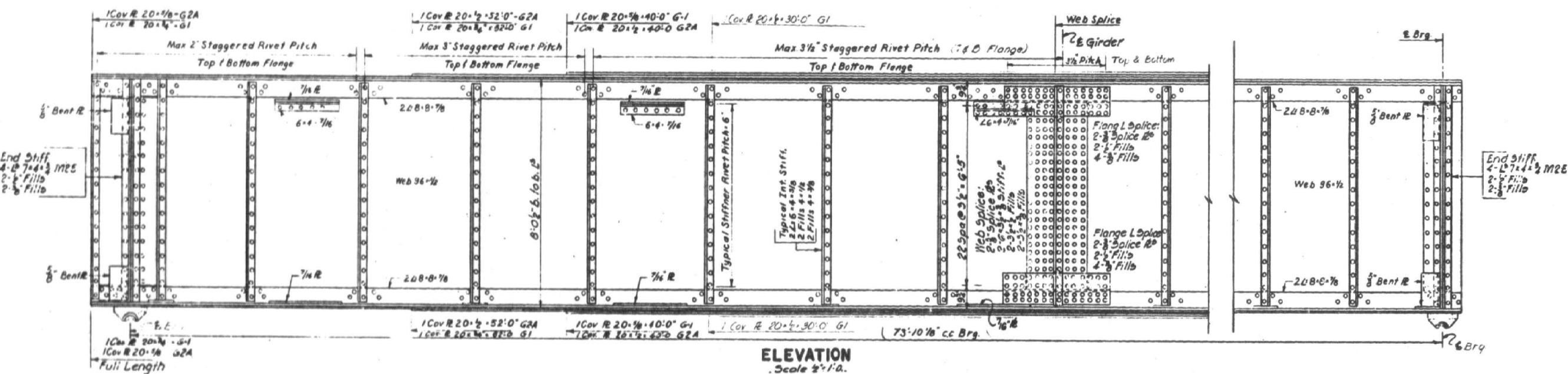
this sheet.

[illegible]

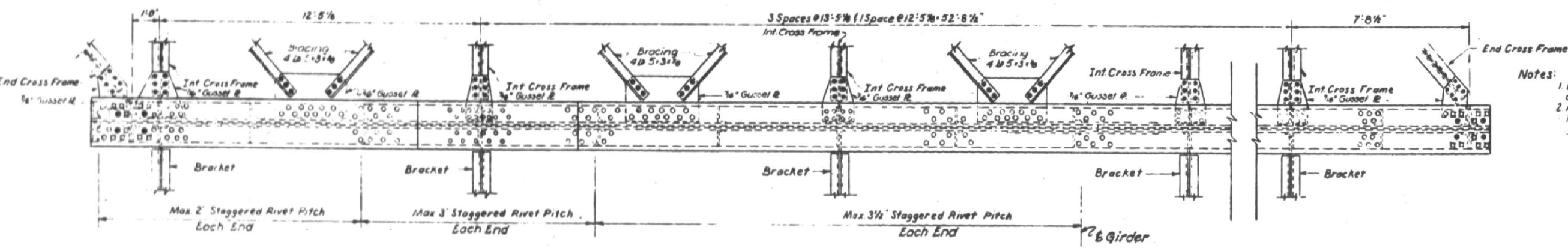
8. Pins shall conform to A.S.T.M. A235
Class F



PLAN
Scale 1/4"=1'-0"

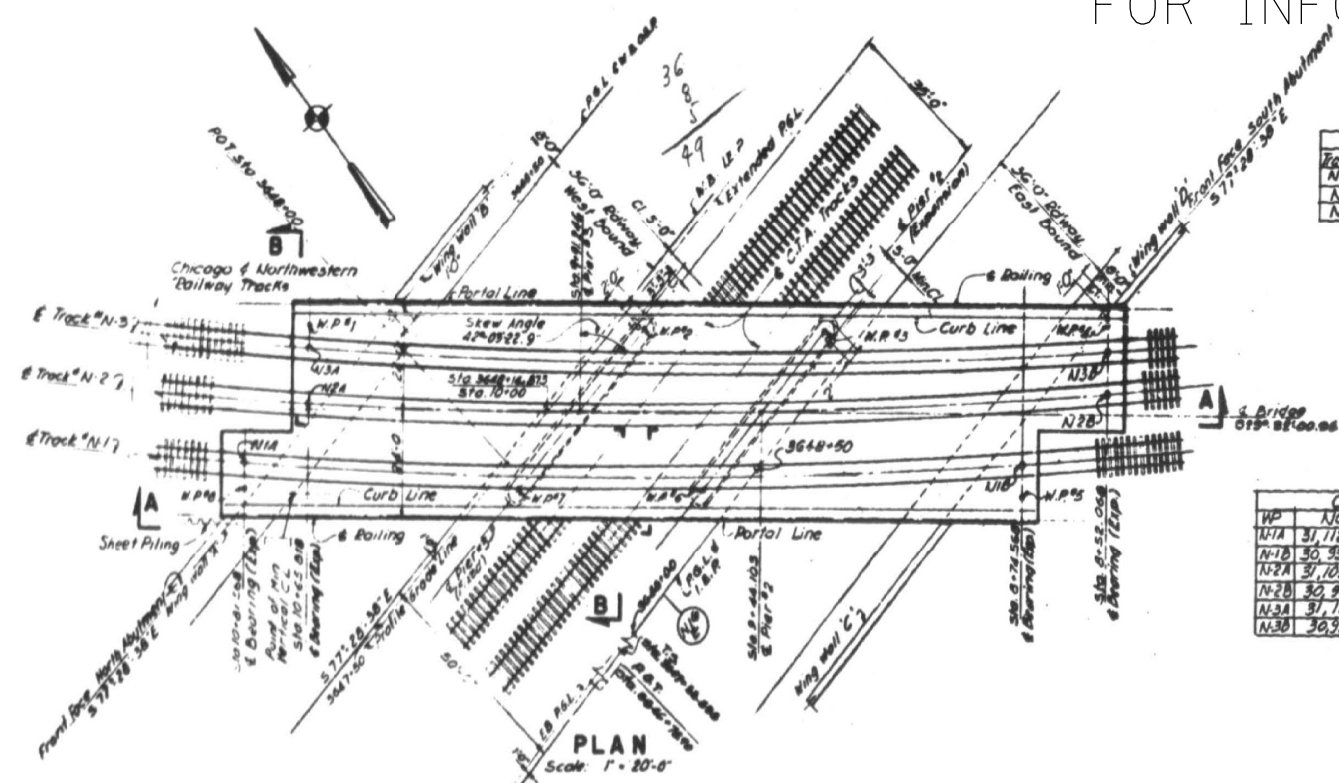


ELEVATION
Scale 1/4"=1'-0"



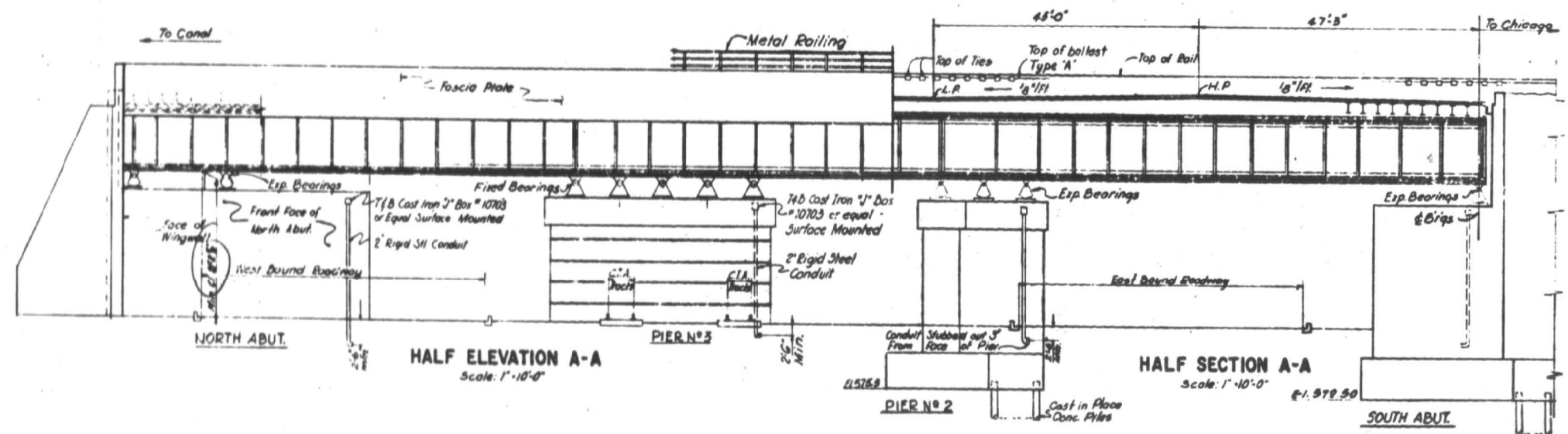
BOTTOM VIEW
Scale 1/4"=1'-0"

- Notes:
- 1. Block top flange @ piers to clear concrete deck slab joints.
 - 2. All rivets 7/8"
 - For intermediate end cross frame details see sheet no 96

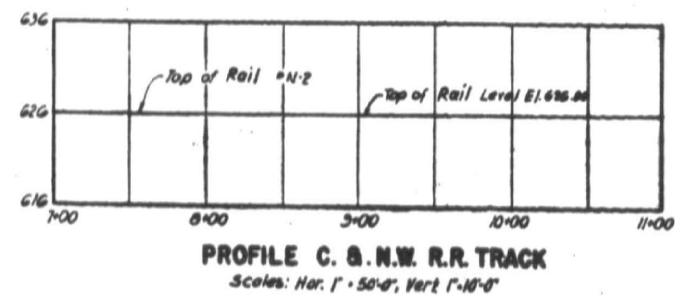
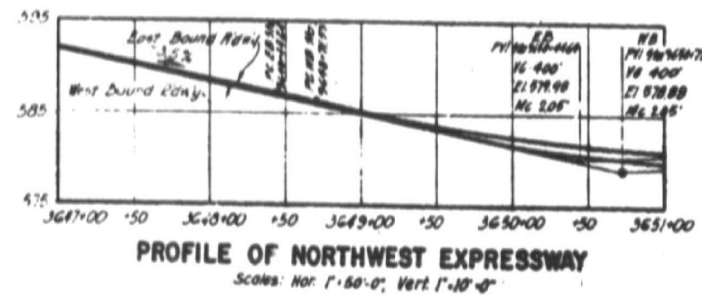


CURVE DATA		
Track	Radius	D°
N-1	1902.86'	3°-00'-58.2"
N-2	1902.86'	3°-00'-58.2"
N-3	1902.86'	3°-00'-58.2"

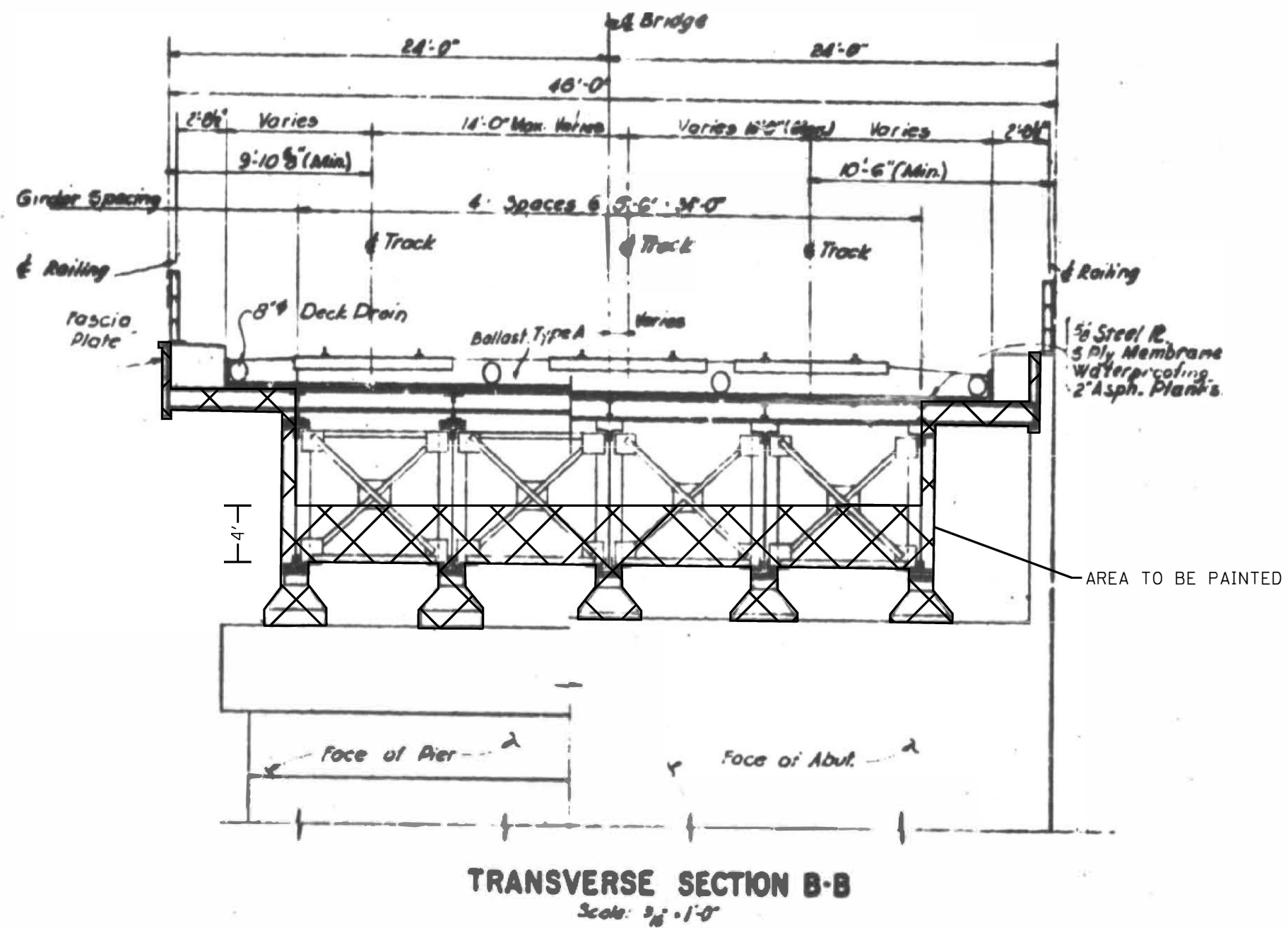
COORDINATES		
WP	NORTH	EAST
N-1A	31,112.308	56,528.249
N-1B	30,999.945	56,639.556
N-2A	31,109.195	56,547.570
N-2B	30,920.915	56,658.990
N-3A	31,111.526	56,558.442
N-3B	30,923.336	56,669.803



- GENERAL NOTES:**
- Girders designed according to A.R.E.A. Standard Specifications 1956 for a Cooper E 78 Loading
 - Girders are continuous over supports, fixed at Pier No. 2
 - All girders, brackets etc. with the exception of Steel Deck to be in accordance to ASTM-A7 Structural Carbon Steel
 - Concrete for Abutments and Piers designed for a Compressive strength at the end of 28 days of 3500 P.S.I.
 - Reinforcing Steel for concrete designed for a tensile strength of 18,000 P.S.I.
 - Concrete Design Stress: f'_c 3500 psi
Concrete without earth pressure 1900 psi
Concrete with earth pressure 3000 psi
 - Earth Pressure: 30 lbs per sq. ft. fluid
 - Pile Capacity: 50 Tons per pile
For details of concrete piles, see sheet 90
 - For Location & Log of Borings, see sheet 92 & 93
 - Piles to be terminated into a strata, where the unconfined compressive strength of the clay is 5.5 tons per sq. ft.
 - Steel deck to be 1/4" Mayari Steel Plate
 - For location of Quantities see Sheet 94
 - Steel Structure for this Bridge, not in contact or in contact with concrete shall be given one shop coat of red lead and oil paint by the Steel fabricator and two field coats of Aluminum paint by the contractor.

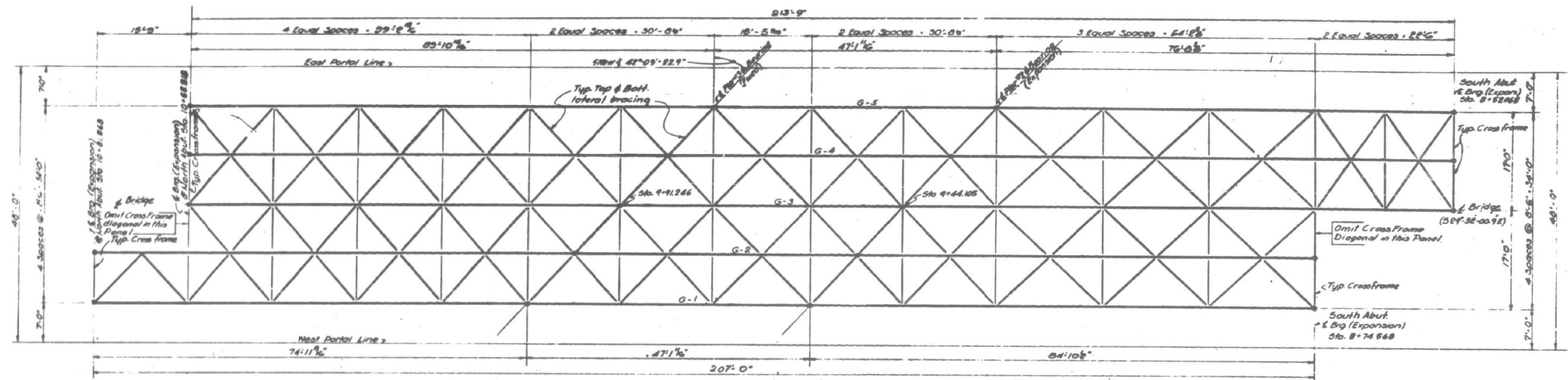


NOTE:
Waterproofing:
Backs of all concrete structures resting against earth fill shall be waterproofed from 18" below top of backfill to the elevation of top of footing. See Standard Spec. Art. 51.20 & 51.28.

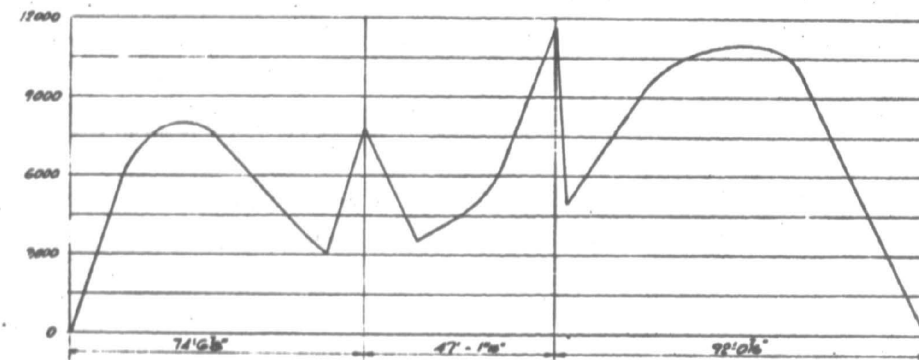


FILE NAME =	USER NAME = diezia	DESIGNED -	REVISED -	STATE OF ILLINOIS DEPARTMENT OF TRANSPORTATION	LOC. 3) SN 016-0517 I-90 (KENNEDY EXPY.) AT UP & METRA RR	F.A.I. RTE. 90	SECTION	COUNTY	TOTAL SHEETS	SHEET NO.
pw:\IL\084EBID\INTEG\Illinois.gov\PWIDOT\Documents\IDOT Offices\District 1\Projects\DI29317-sht-plen.dgn		CHECKED -	REVISED -				2017-026BP	COOK	21	13
Default		DATE -	REVISED -				CONTRACT NO. 62F42			
SCALE: SHEET 2 OF 6 SHEETS STA. TO STA.						ILLINOIS FED. AID PROJECT				

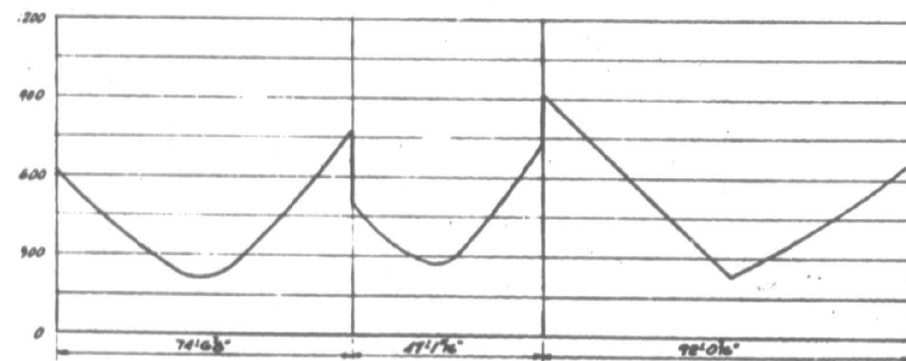
FOR INFORMATION ONLY



FRAMING PLAN
Scale 1/8" = 1'-0"



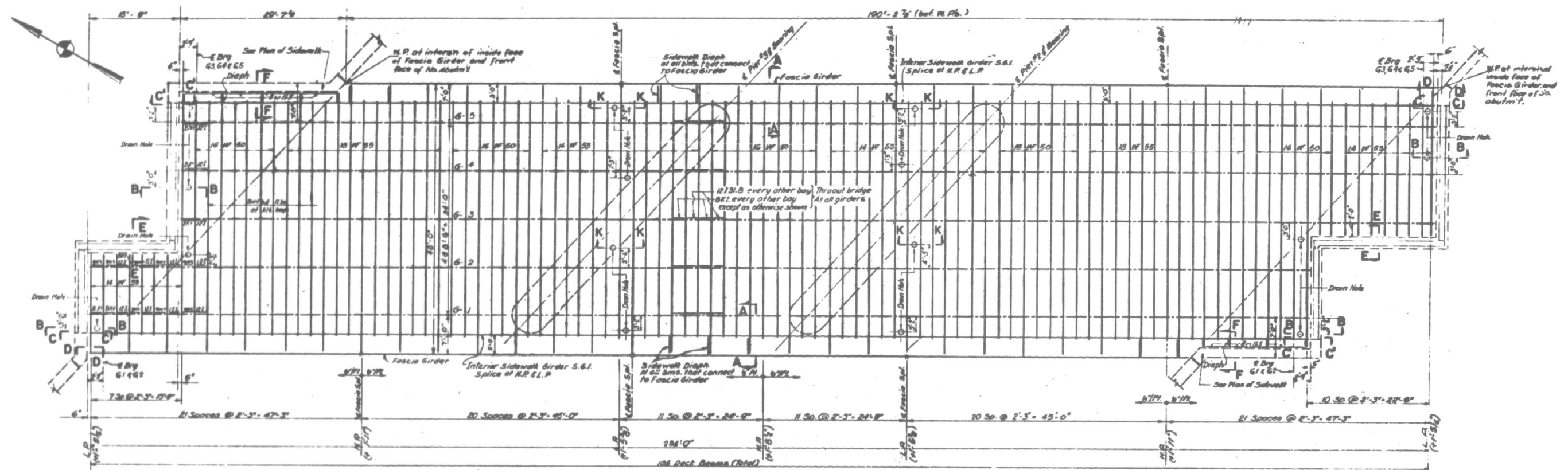
G3 MAX. MOMENT ENVELOPE
Scales: Vertical P = 3000^{lb}
Horizontal L = 20'



#3 - MAX. SHEAR ENVELOPE"
Scales: Vertical 1" = 300'
Horizontal 1" = 20'

FILE NAME =	USER NAME = diazio	DESIGNED -	REVISED -	STATE OF ILLINOIS DEPARTMENT OF TRANSPORTATION	LOC. 3) SN 016-0517 I-90 (KENNEDY EXPY.) AT UP & METRA RR				F.A.I. RTE.	SECTION	COUNTY	TOTAL SHEETS	SHEET NO.
pw\N\084EBID\INTEG\Illinois.gov\PIDOT\Documents\DOT Offices\District 1\Projects\DI29317\3D\Drawings\Design\DI29317-sht-plan.dgn		CHECKED -	REVISED -		90	2017-026BP		COOK	21	13A			
	PLOT SCALE = 100.0000 ' / in.	DATE -	REVISED -						CONTRACT NO. 62F42				
Default	PLOT DATE = 10/4/2017	DATE -	REVISED -		SCALE:	SHEET 2A	OF 6 SHEETS	STA.	TO STA.	ILLINOIS FED. AID PROJECT			

FOR INFORMATION ONLY

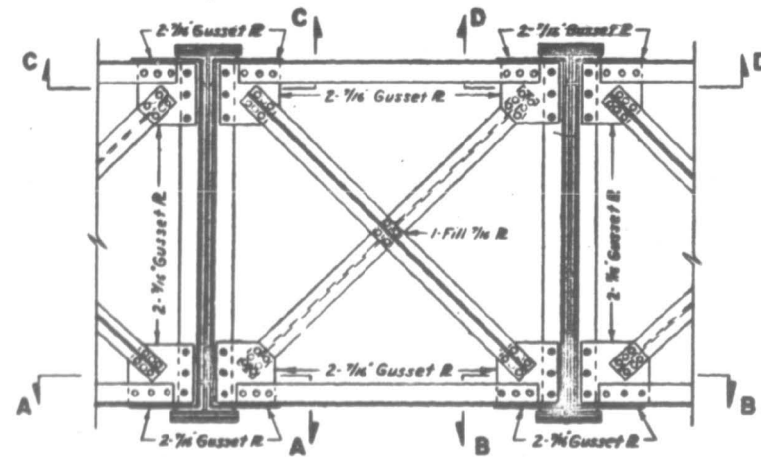
FRAMING PLAN OF DECK BEAMS
Scale: 1/8"=1'-0"

- Notes:
1. Top of rail El. 616.00.
 2. Back of angles of top flanges of girders El. 681.40.
 3. H.P. and L.P. refer to top of 9/16" deck plate.
 4. Figures shown thus (1'-5 1/2") at H.P. and L.P. denote distance to top of 9/16" E. above El. 681.40.
 5. All rivets 7/8" except as otherwise shown.
 6. Dimensions showing spacing of deck beams refer to top of girders.
 7. Fill plates are to be added to deck beams to allow for slope of 1/8" deck plate. See typical Details of Deck Beams and Cross Framing on sheet No. 62 & No. 63.

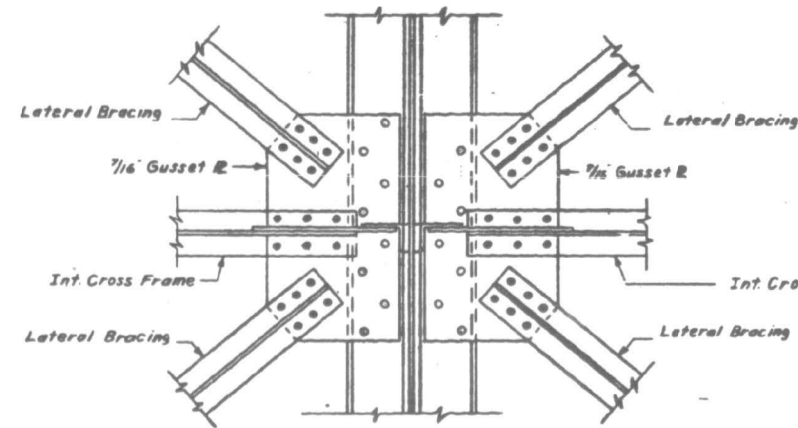
FILE NAME =	USER NAME = diazio	DESIGNED -	REVISED -	STATE OF ILLINOIS DEPARTMENT OF TRANSPORTATION	LOC. 3) SN 016-0517 I-90 (KENNEDY EXPY.) AT UP & METRA RR	SCALE: SHEET 2B OF 6 SHEETS STA. TO STA.	F.A.I. RTE.	SECTION	COUNTY	TOTAL SHEETS	SHEET NO.
p:\1\084EBID\TEG\Illinois.gov\PI\DOT\Documents\DOT Offices\District 1\Projects\DI29317\Design\DI29317-sht-plan.dgn		DRAWN	REVISED -				90	2017-026BP	COOK	21	13B
PLOT SCALE = 100.0000' / 1" in.		CHECKED -	REVISED -				CONTRACT NO. 62F42				
Default		DATE -	REVISED -				ILLINOIS FED. AID PROJECT				

FOR INFORMATION ONLY

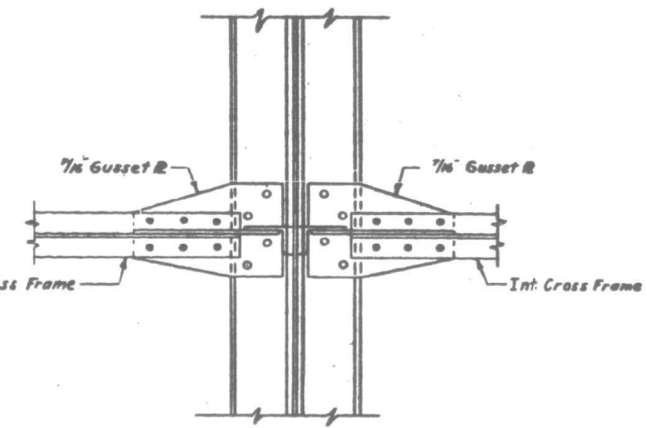
NOTE:
1. Lateral bracing not shown on typical Interior Cross Frame
2. Omit Cross Frame Diagonals at 6 Bearings, (North & South Abuts.) Between Girders 2 & 3 See Sh. #46



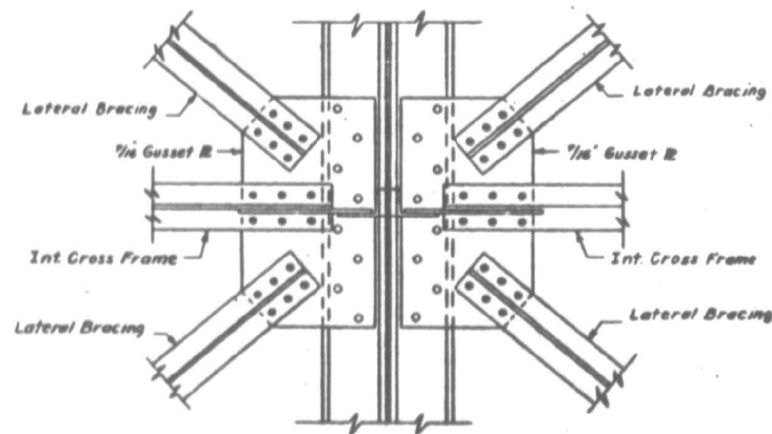
TYPICAL INT. CROSS FRAME
Scale: 1/2" = 1'-0"



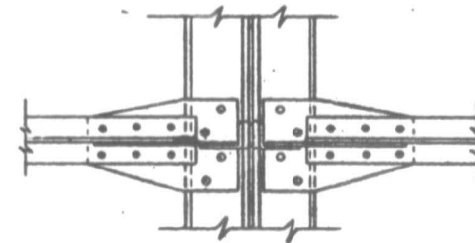
SECTION A-A
Scale: 1'-1-0"



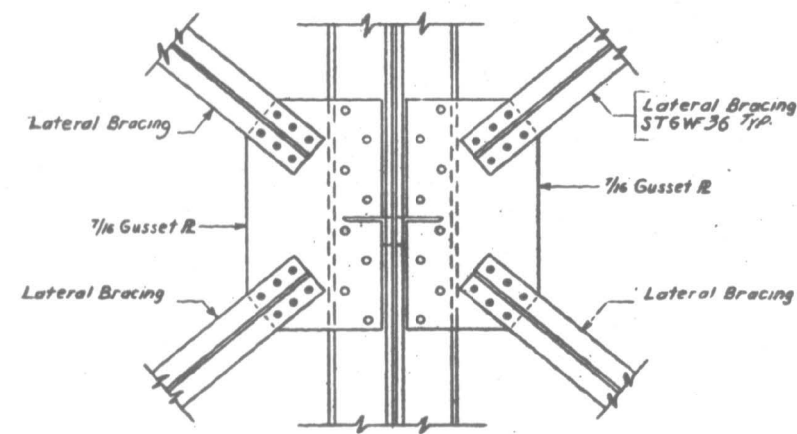
SECTION B-B
Scale: 1/4"=0'



SECTION C-C
Scale: 1"=1'-0"



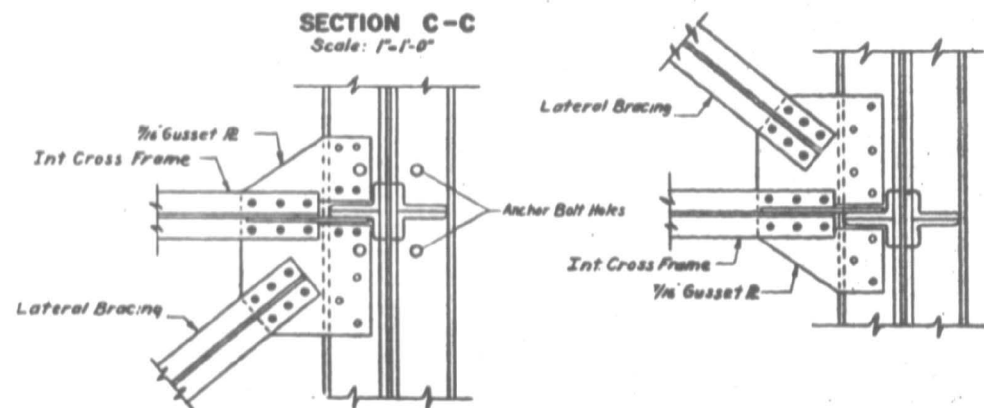
SECTION D-D
Scale: 1/4" = 1'-0"



ALTERNATE INT. CONNECTION
Scale 1/2"=1'-0"

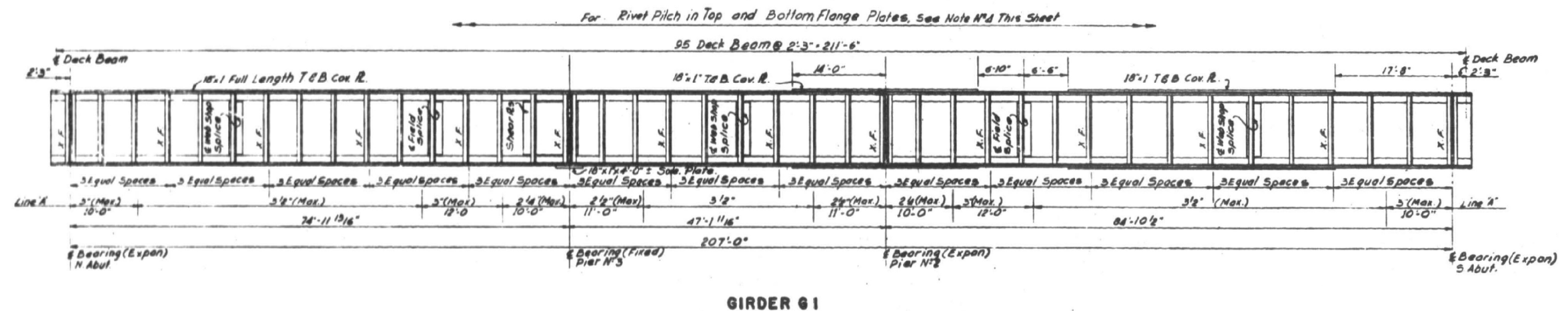
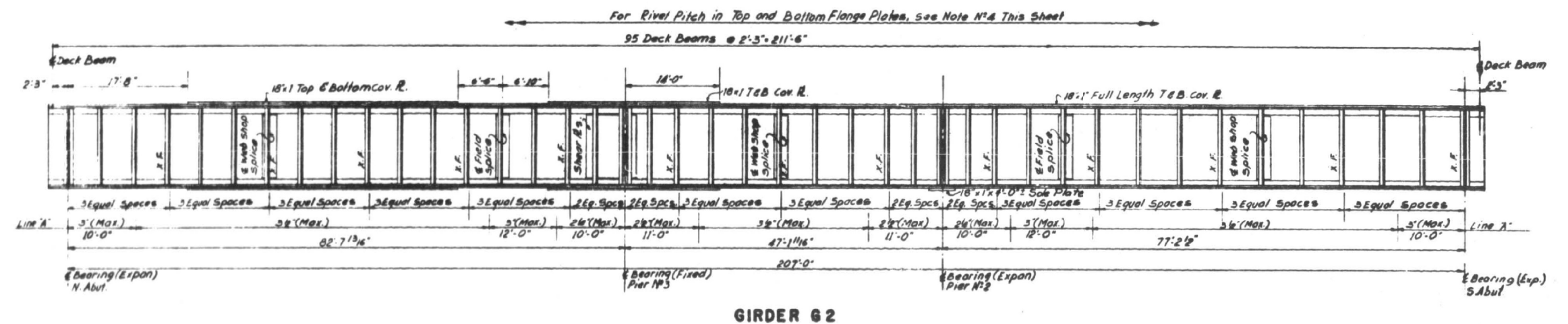
NOTE

1. All rivets to be 7/8"
2. For rivet spacing of web to flange & flange to cover plate see sheet # 56
3. All Lateral Bracing and Cross Frames shall be STG # 56



TYPICAL BOTTOM AND TOP CONNECTIONS AT ABUTMENTS
Scale: 1"=1'-0"

FILE NAME =	USER NAME = diazie	DESIGNED -	REVISED -	<div>STATE OF ILLINOIS DEPARTMENT OF TRANSPORTATION</div>	<div>LOC. 3) SN 016-0517 I-90 (KENNEDY EXPY.) AT UP & METRA RR</div>	F.A.I. RTE.	SECTION	COUNTY	TOTAL SHEETS	SHEET NO.
pw:\IL084EBIDINTEGallinois.gov\PIDOT\Documents\IDOT Offices\District 1\Projects\0129317\Drawings\Design\0129317-sht-plandgn		CHECKED -	REVISED -			90	2017-026BP	COOK	21	13C
PLOT SCALE = 100.0000 ' / in.						CONTRACT NO. 62F42				
PLOT DATE = 10/4/2017		DATE	REVISED -			SCALE:	SHEET 2C OF 6 SHEETS	STA.	TO STA.	



Additional Cover Plate 18'-1"
Top & Bottom as noted on Elevation

MATERIAL

1 Web 122" x 58"
4 Flange Angle 8'-8" x 1'-6"
2 Cover Plates 18'-1"

LEGEND

Line A' Max. Staggered Rivet Pitch of
Flange Angles to Web and extent
of Pitch.

X.F. Denotes cross frame, See Sh. 54

NOTES FOR GIRDERS 61 TO 65 INCLUSIVE

- 1) All Rivets to be 7/8" ϕ
- 2) For Typical Section thru Girders, See this sheet.
- 3) Lengths of second Cover Plates T&B, are
min. dimensions. They are to be modified
if required by Details of Girders.
- 4) Rivet Pitch in Top Cover Plates to be 4'-6" as shown on
Sheet N°42 except as noted at Field Splices and ends
of Cover Plates on Sh. 50. Note also increments and
decrements of 1'-6" in Spacing of Deck Beams at L. R. and
N. R. respectively.
Rivet Pitch in Bottom cover Plates to be 4'-6" Max. Staggered,
except as noted at Field Splices and ends of Cover Plates.
- 5) Shop Splices of flange material are optional and are
to be approved by the Engineer as to details and
location.
- 6) Structural Steel to be detailed in accordance with the
A.R.E.A. Specifications.

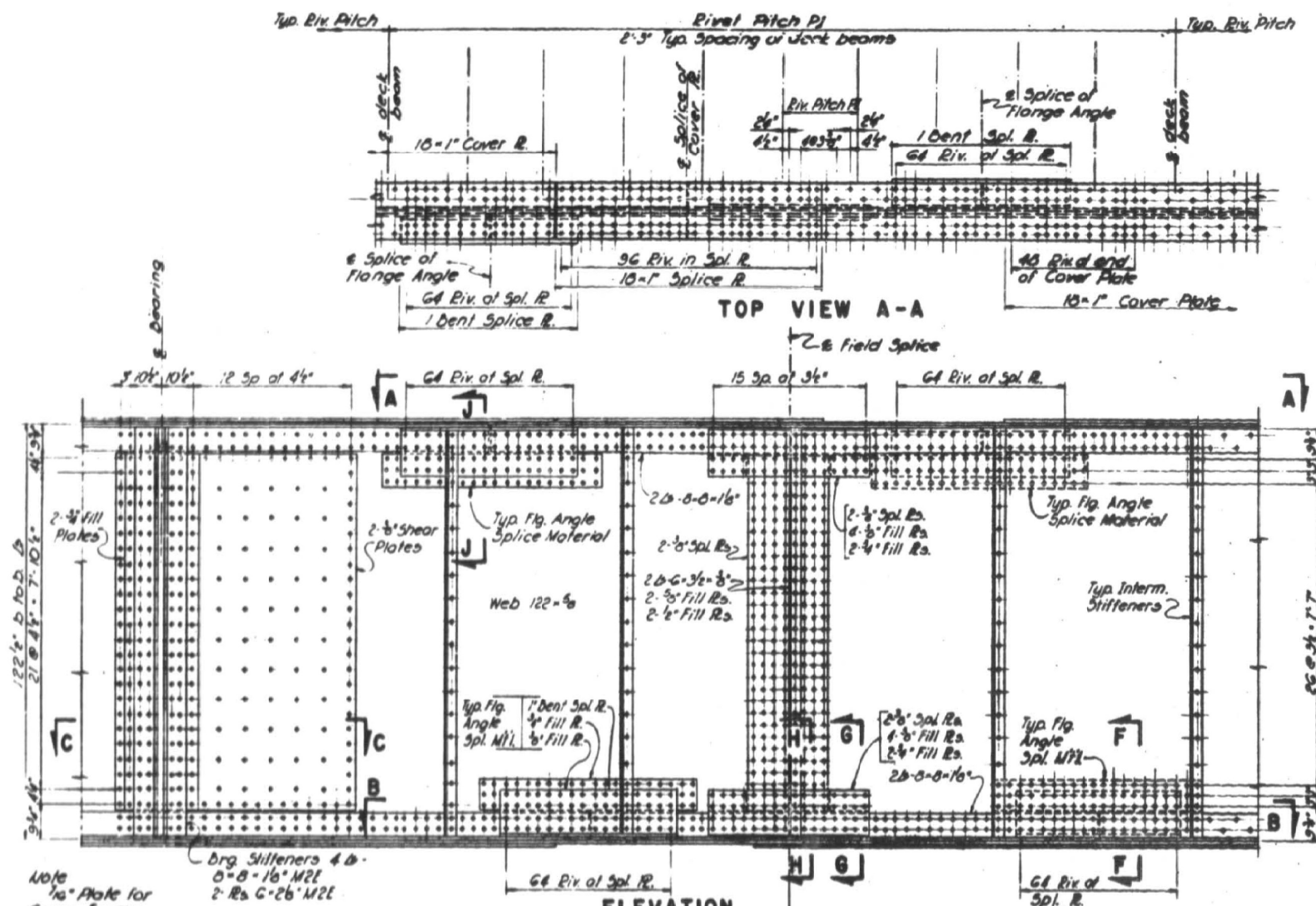
FILE NAME =	USER NAME = diazio	DESIGNED -	REVISED -
p:\1\084EBID\INTEG\Illinois.gov\PI\DOT\Documents\DOT Offices\District 1\Projects\DI293\Drawings\Design\DI29317-sht-plan.dgn		REVISED -	REVISED -
Default	PLOT SCALE = 100.0000' / in.	CHECKED -	REVISED -
	PLOT DATE = 8/22/2017	DATE -	REVISED -

STATE OF ILLINOIS
DEPARTMENT OF TRANSPORTATION

LOC. 3) SN 016-0517
I-90 (KENNEDY EXPY.) AT UP & METRA RR

SCALE: SHEET 3 OF 6 SHEETS STA. TO STA.

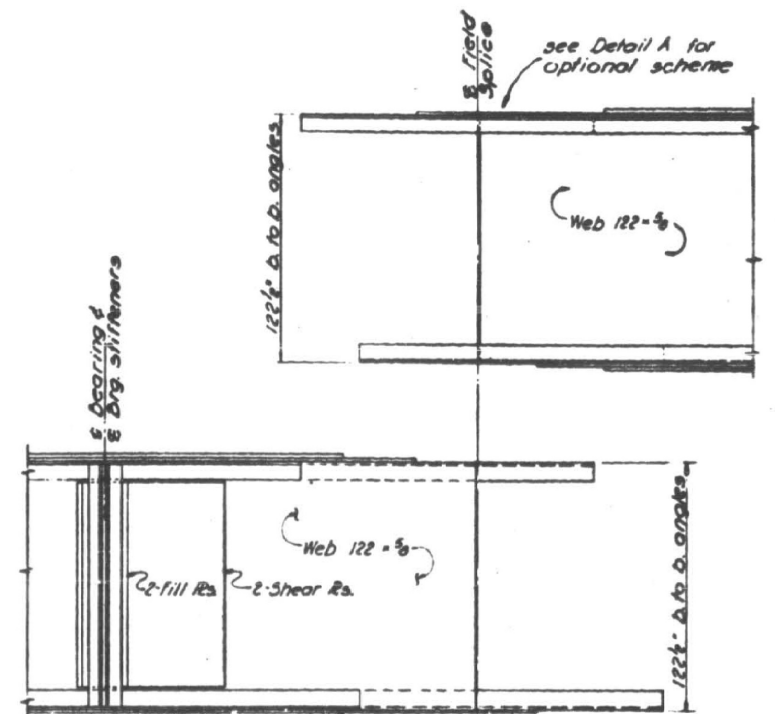
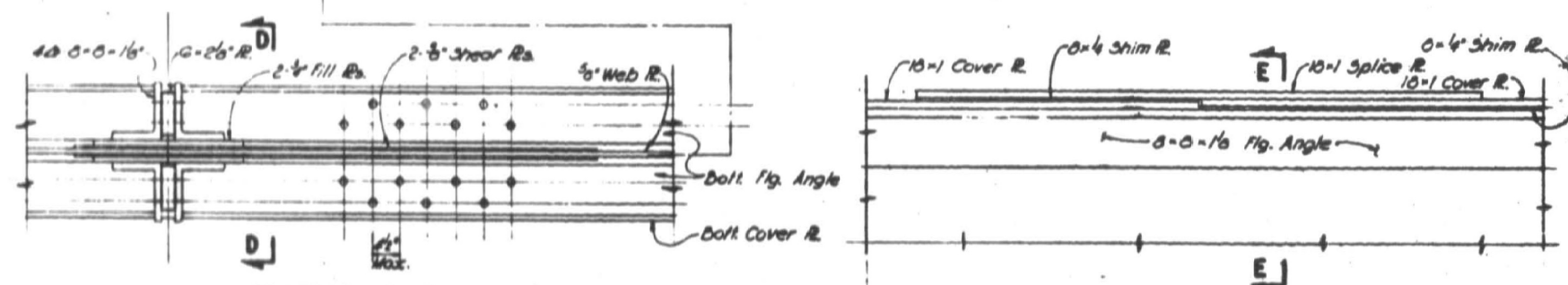
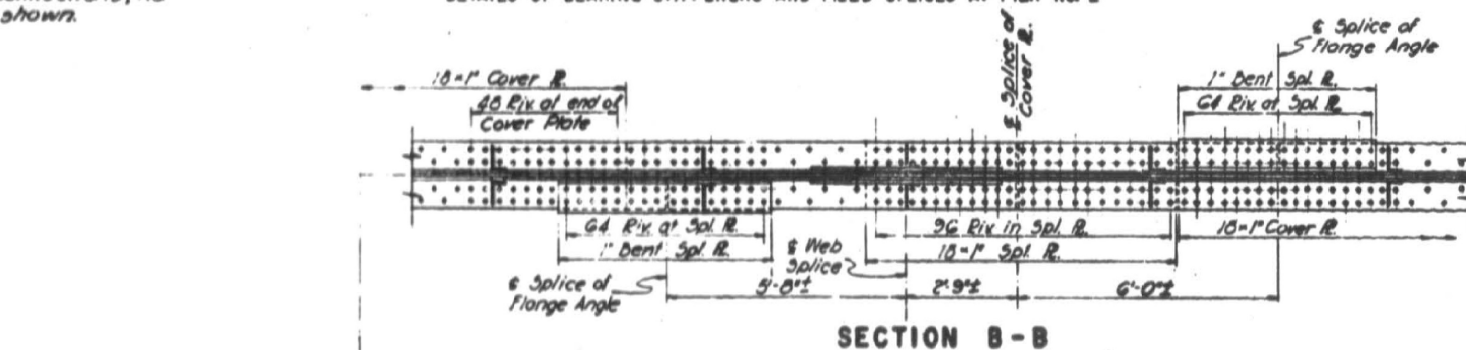
F.A.I. RTE.	SECTION	COUNTY	TOTAL SHEETS	SHEET NO.
90	2017-026BP	COOK	21	14
CONTRACT NO. 62F42				
ILLINOIS FED. AID PROJECT				



Note
1/4" Plate for
Cross Frame
Connections, not
shown.

brg. Stiffeners 4 x
6-8-16" M2L
2-8-26" M2L

ELEVATION
DETAILS OF BEARING STIFFENERS AND FIELD SPLICES AT PIER NO. 2



NOTES:

1. All rivets to be 3/4", all rivet holes to be 1/2"
2. For cover plate cut-off see sheet No. 56157
3. For stiffener spacing see sheet No. 54, 56 & 57
4. Deck beams and brackets not shown; see sheet No. 62163
5. For typ. rivet pitch in upper chord plate see sheet No. 62; for all other rivet pitch see sheet No. 56 & 57
6. For cross frame & lateral bracing see Sh. No. 64
7. Provide stitch rivets in U.S. legs of all double angles.
8. Location of deck beams and rivet pitch in upper chord plate govern location and length of splice members of upper chord. Rivet pitch in splice members of lower chord to be 3 1/2".
9. Details of bearing stiffeners and field splice shown are typical for all girders at pier #2, and opposite hand and typ. at pier #3, except for omission of second top and bottom cover plate and of shear plates, as shown on sheet No. 56157 and except for location of stiffener angles and deck beams. Where shear plates do not occur, use 1/4" fill plates and extend one rivet line past the 1/4" fill plates.

FILE NAME =	USER NAME = diazo	DESIGNED -	REVISED -
p:\1\084EBID\TEG\Illinois.gov\PI\DOT\Documents\DOT Offices\District 1\Projects\DI293\Design\DI29317-sht-plan.dgn		CHECKED -	REVISED -
Default	PLOT DATE = 8/22/2017	DATE -	REVISED -

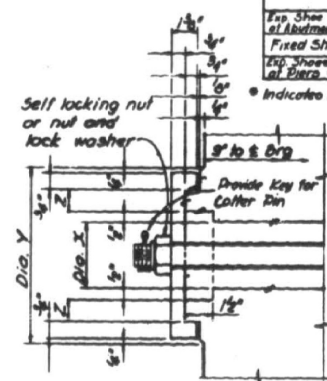
STATE OF ILLINOIS
DEPARTMENT OF TRANSPORTATION

LOC. 3) SN 016-0517
I-90 (KENNEDY EXPY.) AT UP & METRA RR

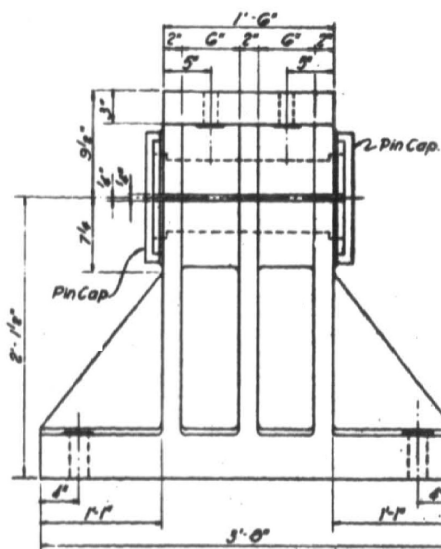
SCALE: SHEET 4 OF 6 SHEETS STA. TO STA.

F.A.I. RTE.	SECTION	COUNTY	TOTAL SHEETS	SHEET NO.
90	2017-026BP	COOK	21	15
CONTRACT NO. 62F42				
ILLINOIS FED. AID PROJECT				

	Day X	Day Y	Day Z
Exp. Shoes at Abidjan	3½"	8½"	1"
Fixed Sh.	6½"	1'0½"	1½"
Exp. Shoes at Piers *	3¾"	8¾"	1"

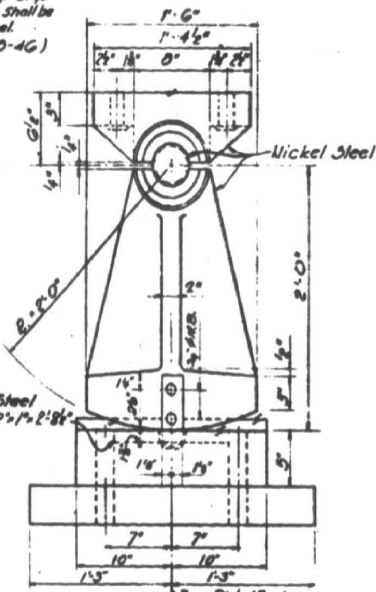


DETAIL OF PIN CAPS
Scale: 3"=1'-0"



$\frac{1}{8}$ " Hole for 1" Rod
 1.5"
 1.0"
 1/2"
 for diameter of Pin see Schedule above

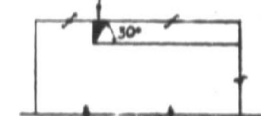
NOTE :
Pins for Exp. Brigs
of Pier No 2 shall be
Nickel Steel.
(A.S.M. A0-46)



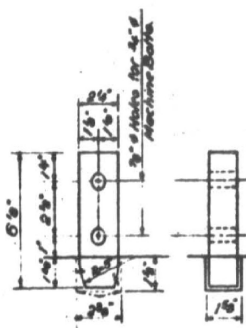
DETAIL OF EXPANSION BEARINGS
Scale: 1 1/2" = 1'-0"

PIN BEARING PRESSURES			
LOCATION	Type of Bearing	Diameter of Pin	Pin Bearing Pressure (P.S.I.)
Bottom	Exp.	3 1/2"	10.50
Pier 3	Exp.	3 1/4"	17.10 "
Pier 3	Fixed	6 1/2"	11.98

Fill with weld material
around periphery of
insert plate and
grind to a smooth fin.



- Notes:
- 1- Bolt holes in castings to be drilled to metal template bussed and spot faced. Template to be provided to substructure contractor.
- 2- Oversize holes in base I.S. and castings to be packed with lead or babbitt after adjustment of bearing and stringer and before anchor bolts are tightened.
- 3- Bearings to be shop assembled and match marked.
- 4- Rockers to be checked for full bearing.
- 5- Expansion shoes at Pier No.2 to be Nickel Steel as noted. Except the base plates which shall conform to Grade 65-35, ASTM-A27.
- 6- All anchor bolts to be 1 1/2" Ø swaged bolts. Nuts for anchor bolts to be 2" Ø.
- 7- All bolts for fastening upper shoe to girder to be 1 1/2" Ø. All bolt holes in upper shoe to be 1 3/4" Ø.
- 8- Expansion shoes of Abutments and fixed shoes of Pier No.3 to be Carbon Steel, Grade 65-35, ASTM-A27.
- 9- Provide tie fabric or approved equal under all base plates.
- 10- Structural Nickel Steel conform to the Specifications for Structural Nickel Steel of the A.S.T.M. A242.
- 11- All Pins except as noted shall conform to ASTM A228, Grade F.



STATE OF ILLINOIS
DEPARTMENT OF TRANSPORTATION

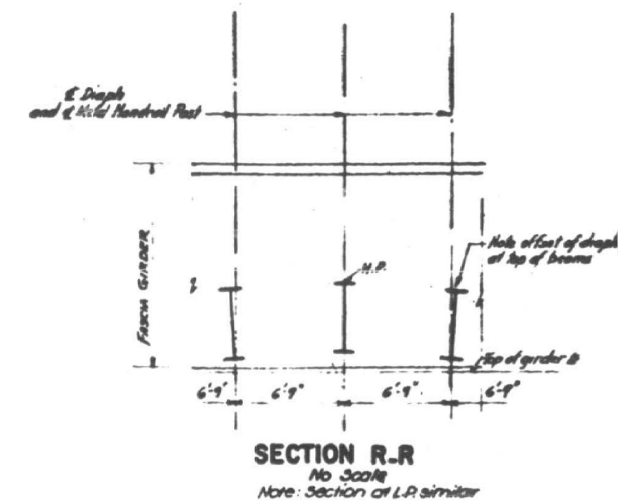
LOC. 3) SN 016-0517
I-90 (KENNEDY EXPY.) AT UP & METRA RR

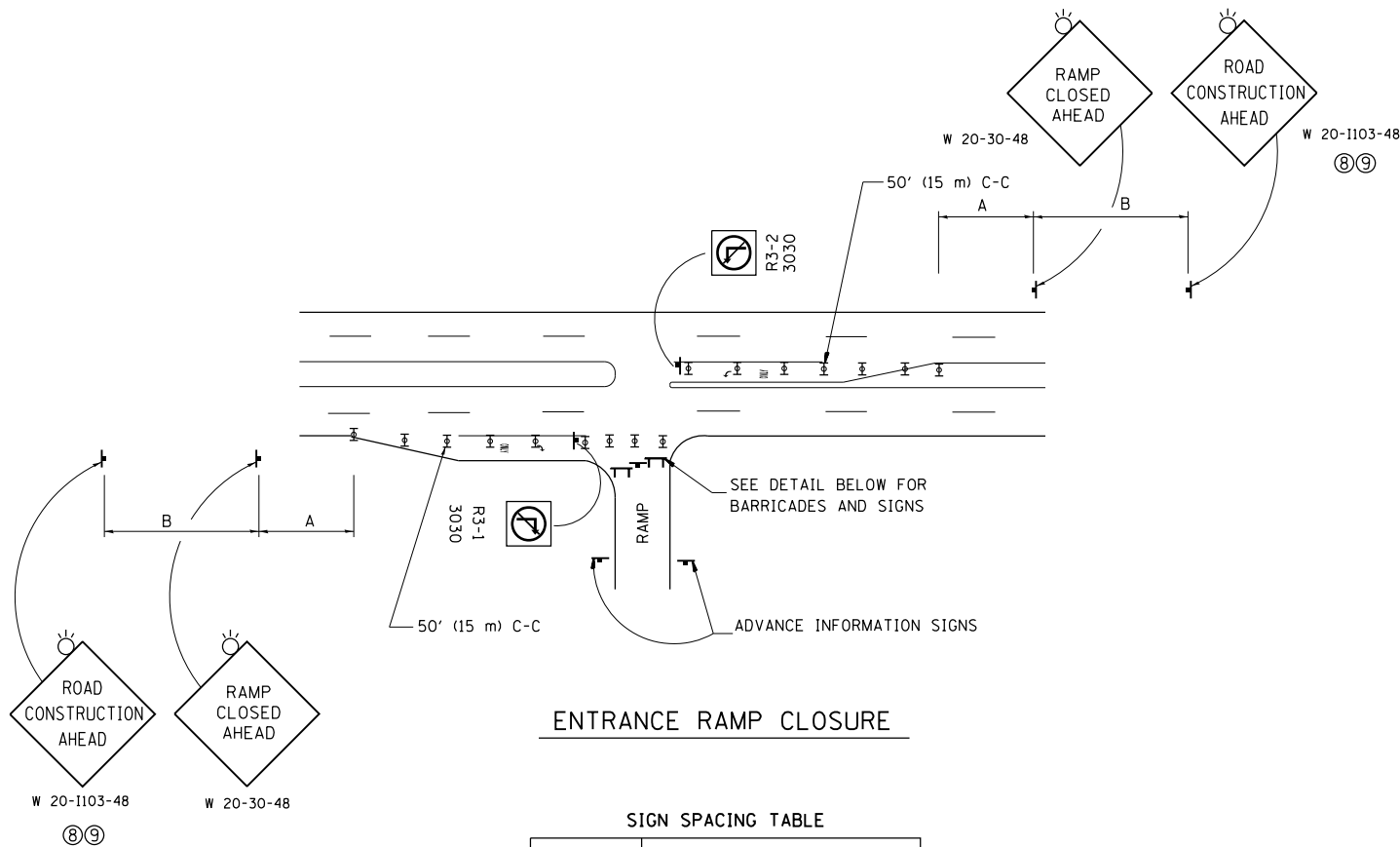
F.A.I. RTE.	SECTION	COUNTY	TOTAL SHEETS	SHEET NO.
90	2017-026BP	COOK	21	16
		CONTRACT NO. 62F42		
ILLINOIS FED. AID PROJECT				

**STATE OF ILLINOIS
DEPARTMENT OF TRANSPORTATION**

SCALE:	SHEET 6	OF 6	SHEETS	STA.	TO STA.
--------	---------	------	--------	------	---------

F.A.I. RTE.	SECTION	COUNTY	TOTAL SHEETS	SHEET NO.
90	2017-026BP	COOK	21	17
		CONTRACT NO. 62F42		
		ILLINOIS FED. AID PROJECT		

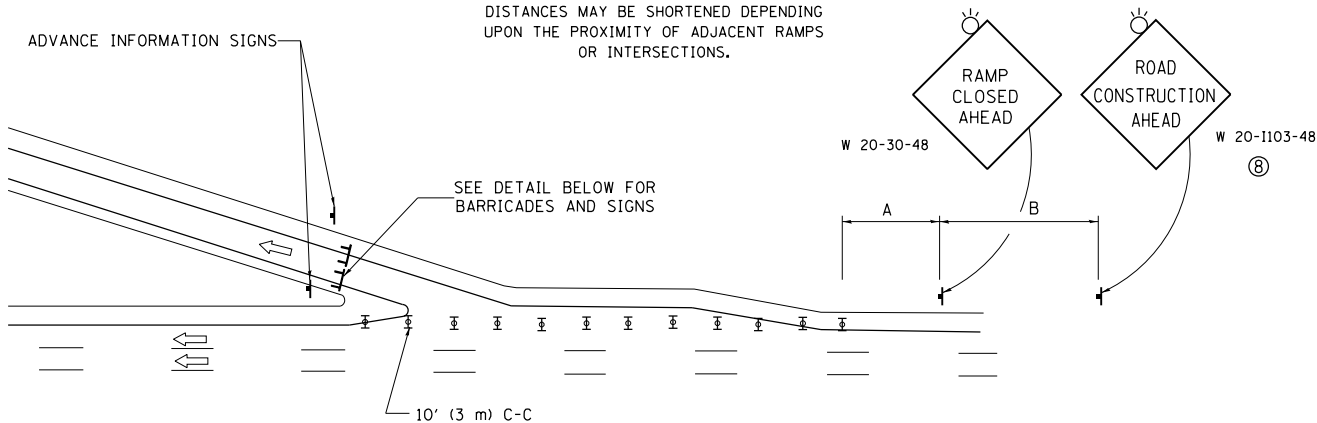




ENTRANCE RAMP CLOSURE

FACILITY	DISTANCE BETWEEN SIGNS	
	A	B
EXPRESSWAY >24 HOURS	1000' (300 m)	1500' (450 m)
EXPRESSWAY <24 HOURS	500' (150 m)	500' (150 m)
ARTERIAL 55 MPH	500' (150 m)	500' (150 m)
ARTERIAL 50-45 MPH	350' (100 m)	350' (100 m)
ARTERIAL <45 MPH	200' (60 m)	200' (60 m)

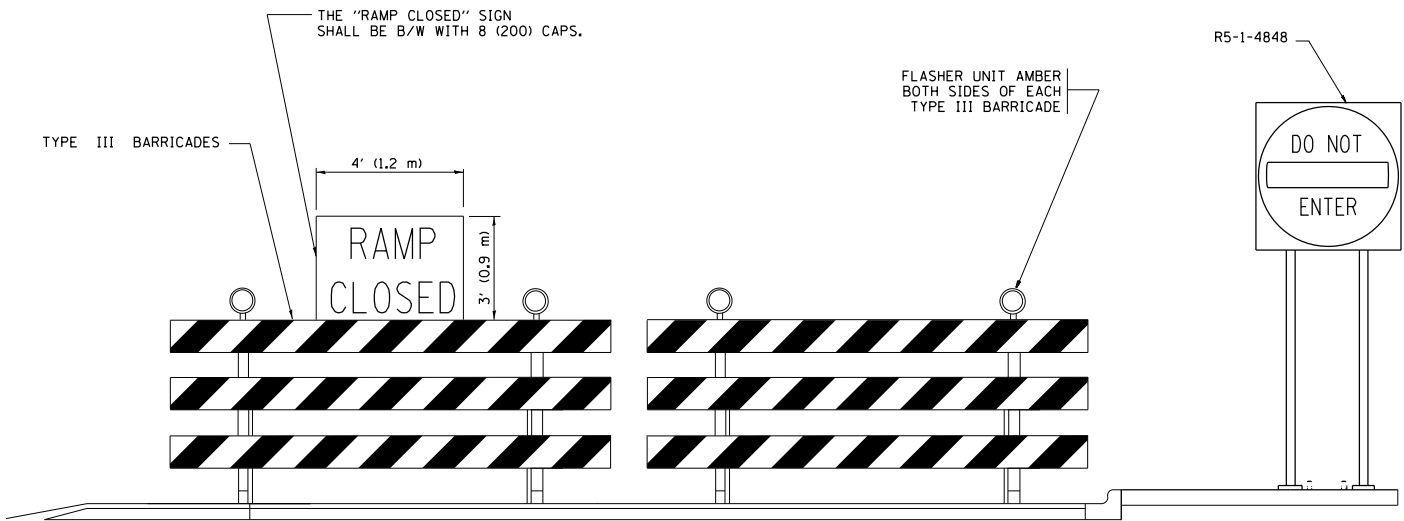
DISTANCES MAY BE SHORTENED DEPENDING UPON THE PROXIMITY OF ADJACENT RAMPS OR INTERSECTIONS.



EXIT RAMP CLOSURE

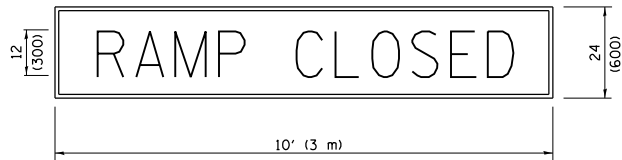
SYMBOLS

- TYPE II BARRICADE OR DRUM WITH STEADY BURN MONO-DIRECTIONAL LIGHT
- TYPE III BARRICADE WITH 2 FLASHING LIGHTS



DETAIL FOR REQUIRED BARRICADES & SIGNS

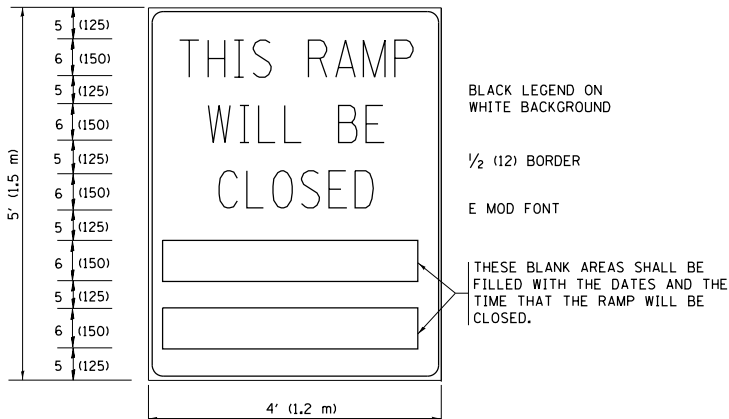
RAMP CLOSURE ADVANCE WARNING SIGN



BLACK LEGEND ON ORANGE BACKGROUND MOUNTED DIAGONALLY
E MOD FONT
1 (25) BORDER

THESE SIGNS ARE REQUIRED ON ALL THE EXIT GUIDE SIGNS FOR EXIT RAMPS THAT WILL BE CLOSED FOR MORE THAN FOUR (4) CONSECUTIVE DAYS.

RAMP CLOSURE ADVANCE INFORMATION SIGN



BLACK LEGEND ON WHITE BACKGROUND

1/2 (12) BORDER

E MOD FONT

THESE BLANK AREAS SHALL BE FILLED WITH THE DATES AND THE TIME THAT THE RAMP WILL BE CLOSED.

THESE SIGNS ARE REQUIRED ON BOTH SIDES OF THE RAMP, MINIMUM OF 1 WEEK IN ADVANCE OF THE CLOSURE.

THESE SIGNS SHALL BE FABRICATED AND PAID FOR ACCORDING TO THE TEMPORARY INFORMATION SIGNING SPECIAL PROVISION

GENERAL NOTES:

- CONES MAY BE SUBSTITUTED FOR DRUMS OR TYPE II BARRICADES DURING DAY OPERATIONS. CONES SHALL BE A MINIMUM OF 28 (700) HIGH.
- STEADY BURN LIGHTS WILL NOT BE REQUIRED FOR DAY OPERATIONS.
- A FLAGGER SHALL BE POSITIONED AT EACH CLOSED RAMP THAT IS OPEN TO CONSTRUCTION VEHICLES, PRECEDED BY A W20-7 FLAGGER WARNING SIGN.
- ALL ROUTE MARKERS AND TRAILBLAZER ASSEMBLIES WHICH DIRECT MOTORISTS TO A CLOSED ENTRANCE RAMP SHALL BE COVERED WHEN THE RAMP IS CLOSED FOR MORE THAN FOUR (4) DAYS.
- THE SIGNING AND BARRICADING WHICH IS REQUIRED BY THIS DETAIL SHALL BE INCLUDED IN THE COST OF TRAFFIC CONTROL AND PROTECTION (EXPRESSWAYS).
- AUTHORIZATION FROM THE DISTRICT'S BUREAU OF TRAFFIC IS REQUIRED FOR ALL RAMP CLOSURES.
- THE RAMP CLOSURE ADVANCE INFORMATION SIGNS SHALL BE ERECTED IF THE CLOSURE TIME EXCEEDS TWENTY-FOUR (24) HOURS. ADDITIONAL ADVANCE WARNING SIGNS ON EXIT GUIDE SIGNING WILL BE REQUIRED FOR EXIT RAMP CLOSURES THAT EXCEED FOUR (4) DAYS IN LENGTH.
- ROAD CONSTRUCTION AHEAD SIGNS MAY BE OMITTED WHEN THIS DETAIL IS USED IN CONJUNCTION WITH OTHER TRAFFIC CONTROL THAT ALREADY INCLUDES A ROAD CONSTRUCTION AHEAD SIGN.
- ARTERIAL ROAD CONSTRUCTION AHEAD SIGNS SHALL BE INSTALLED ON THE LEFT SIDE OF TRAFFIC IF THE MEDIAN IS MORE THAN 10 FT WIDE.

ALL DIMENSIONS ARE IN INCHES (MILLIMETERS) UNLESS OTHERWISE SHOWN.

FILE NAME =	USER NAME = diazo	DESIGNED - DWS	REVISED - JAF 02-06
p:\1\084EBID\INTEG\illinois.gov\PIWIDOT\Documents\IDOT Offices\District 1\Projects\DI293\Drawn\Design\DistStd.dgn		REVISED - SPB 01-07	
	PLOT SCALE = 100.0000' / in.	CHECKED -	REVISED - SPB 12-09
	PLOT DATE = 8/22/2017	DATE - 02-83	REVISED - MD 06-13

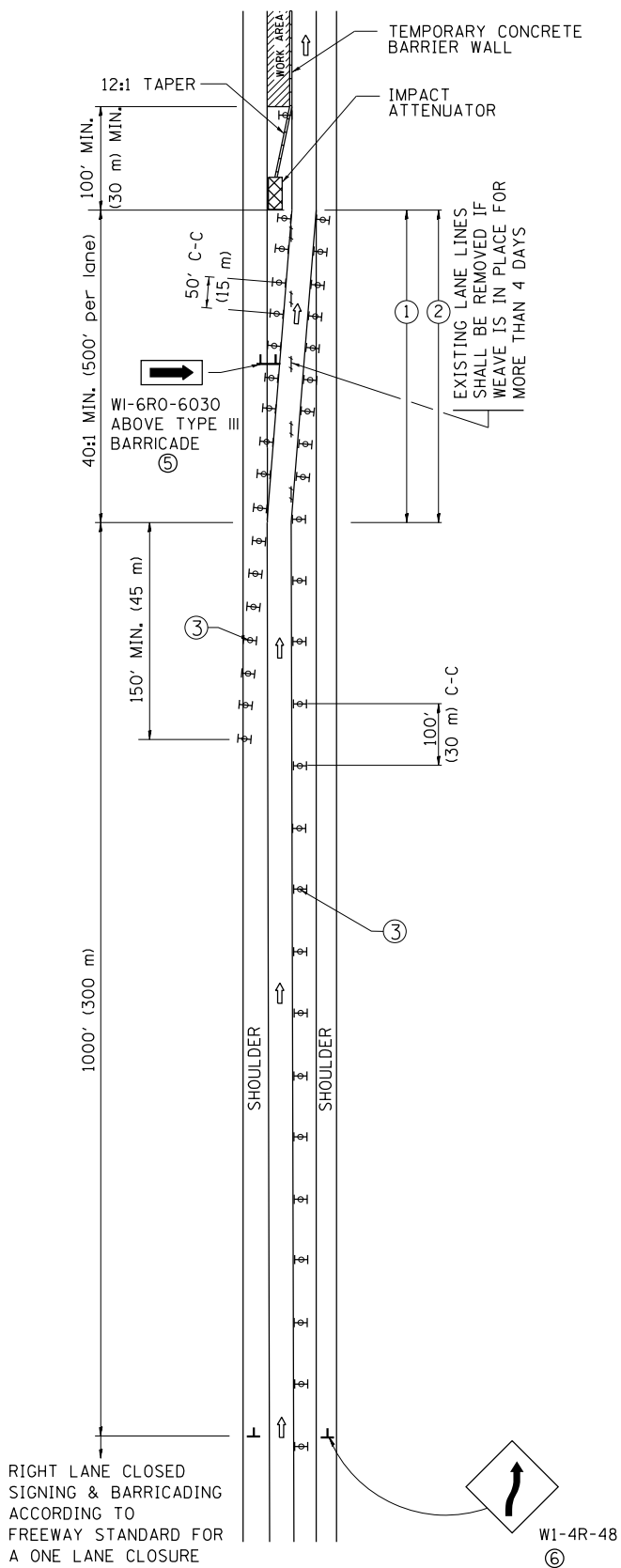
STATE OF ILLINOIS
DEPARTMENT OF TRANSPORTATION

ENTRANCE AND EXIT RAMP
CLOSURE DETAILS

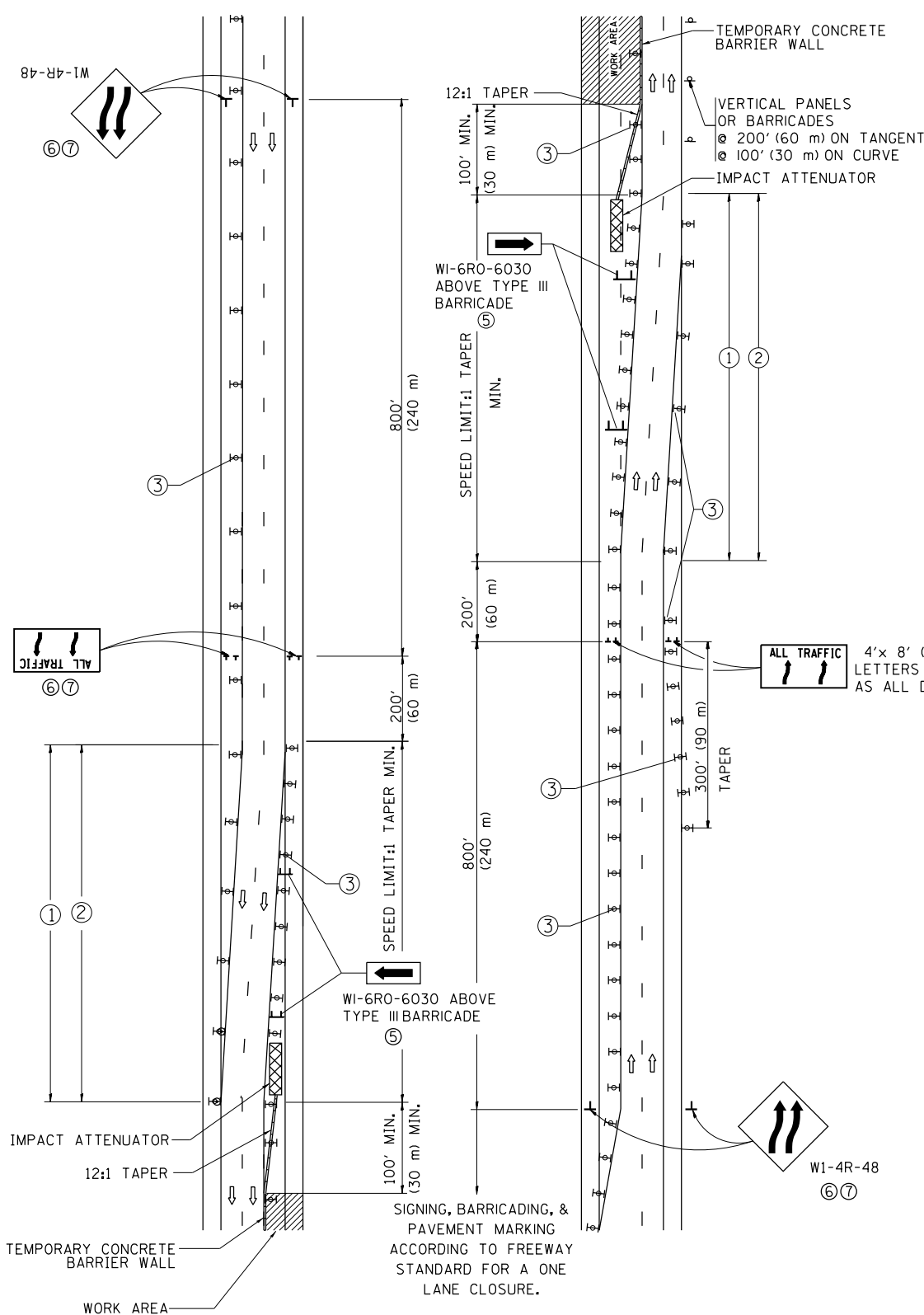
SCALE: NONE SHEET NO. 1 OF 1 SHEETS STA. TO STA.

F.A.I. RTE.	SECTION	COUNTY	TOTAL SHEETS	SHEET NO.
90	2017-026BP	COOK	21	18
TC-08		CONTRACT NO. 62F42		
FED. ROAD DIST. NO. 1		ILLINOIS FED. AID PROJECT		

SINGLE LANE WEAVE



MULTI-LANE WEAVE



GENERAL NOTES

- EXISTING CONFLICTING PAVEMENT MARKING LINES SHALL BE REMOVED. PAVEMENT MARKING REMOVAL SHALL NOT BE REQUIRED FOR SINGLE LANE WEAVES UNDER 4 DAYS IN DURATION.
- CONTINUOUS REFLECTIVE TEMPORARY PAVEMENT MARKING TAPE SHALL BE PLACED THROUGHOUT THE TAPER AND FOR 300' (90 m) ALONG SIDE THE WORK AREA WHERE THE CLOSURE TIME IS GREATER THAN FOURTEEN DAYS. THE LEFT EDGE LINE SHALL BE YELLOW AND THE RIGHT EDGE LINE SHALL BE WHITE. FOR MULTI-LANE WEAVES LANE LINES SHALL BE 5 INCH, 10'-30' (3 m-9 m) SKIP DASH, WHITE.
- PLASTIC DRUMS WITH STEADY BURN LIGHTS AT 50' (15 m) C-C SPACING IN TAPERS AND 100' (30 m) C-C SPACING IN TANGENTS.
- ALL SIGNS SHALL BE POST MOUNTED IF THE CLOSURE TIME EXCEEDS FOUR DAYS.
- TYPE III BARRICADES MAY BE OMITTED FOR SINGLE-LANE WEAVES UNDER 24-HOURS IN DURATION. W1-6 SIGNS WILL STILL BE REQUIRED. IF THE WIDTH OF OFFSET IS LESS THAN 6' THEN THE TYPE III BARRICADE WITH ATTACHED ARROW SIGN PANEL CAN BE ELIMINATED IN THE TAPER AREAS.
- WHEN THE LENGTH OF THE SHIFTED SEGMENT (DISTANCE BETWEEN WEAVE POINTS) IS LESS THAN 1500', DOUBLE REVERSE CURVE SIGNS (W24-1) SHOULD BE USED INSTEAD OF THE REVERSE CURVE (W1-4) SIGNS. ARROWS ON THE 4'X8' "ALL TRAFFIC" SIGNS SHALL BE THE SAME SHAPE.
- THE NUMBER OF ARROWS ON THESE SIGNS SHALL MATCH THE NUMBER OF LANES OPEN TO TRAFFIC.

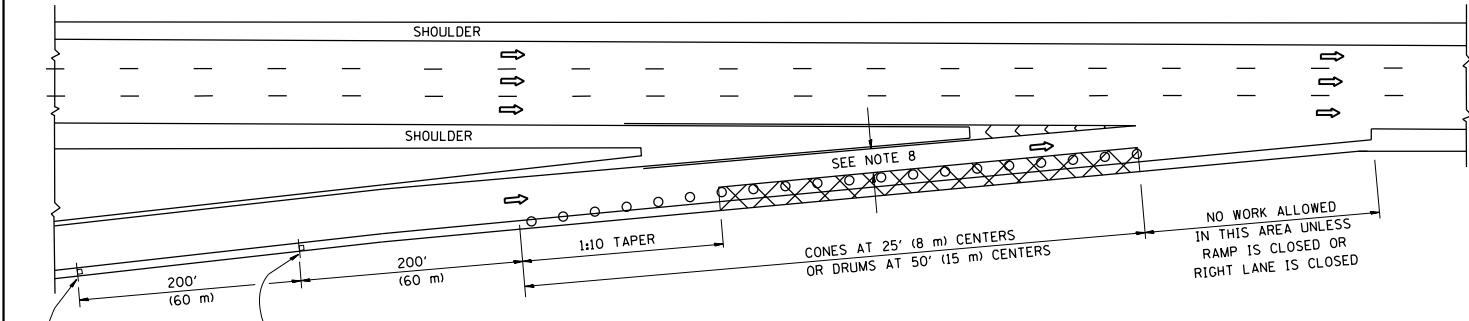
SYMBOLS

- DIRECTION OF TRAFFIC
- WORK AREA
- SIGN ON PORTABLE OR PERMANENT SUPPORT
- TYPE II BARRICADE OR DRUM WITH MONO-DIRECTIONAL STEADY BURNING LIGHT
- TEMPORARY CONCRETE BARRIER WALL
- IMPACT ATTENUATOR
- W1-4R-48
- W24-1-48

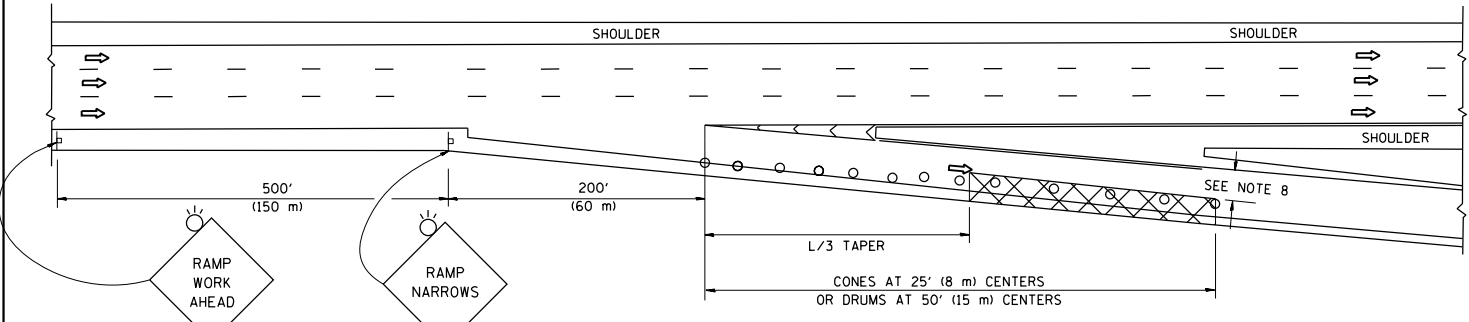
ALL DIMENSIONS ARE IN INCHES (MILLIMETERS)
UNLESS OTHERWISE SHOWN

FILE NAME = p:\11\084EBID\INTEG\Illinois.gov\PI\DOT\Documents\DOT Offices\District 1\Projects\DI293\Design\DistStd.dgn	USER NAME = diazo	DESIGNED - DWS	REVISED - JAF 02-06	STATE OF ILLINOIS DEPARTMENT OF TRANSPORTATION	TRAFFIC CONTROL DETAILS FOR FREEWAY SINGLE & MULTI-LANE WEAVE			F.A.I. RTE.	SECTION	COUNTY	TOTAL SHEETS	SHEET NO.
	PLOT SCALE = 100.0000' / in.	CHECKED -	REVISED - SPB 01-07					90	2017-026BP	COOK	21	19
	PLOT DATE = 8/22/2017	DATE - 02-87	REVISED - SPB 12-09					TC-09		CONTRACT NO. 62F42		
			REVISED - MD 06-13					FED. ROAD DIST. NO. 1 ILLINOIS FED. AID PROJECT				
				SCALE: NONE	SHEET NO. 1 OF 1 SHEETS	STA.	TO STA.					

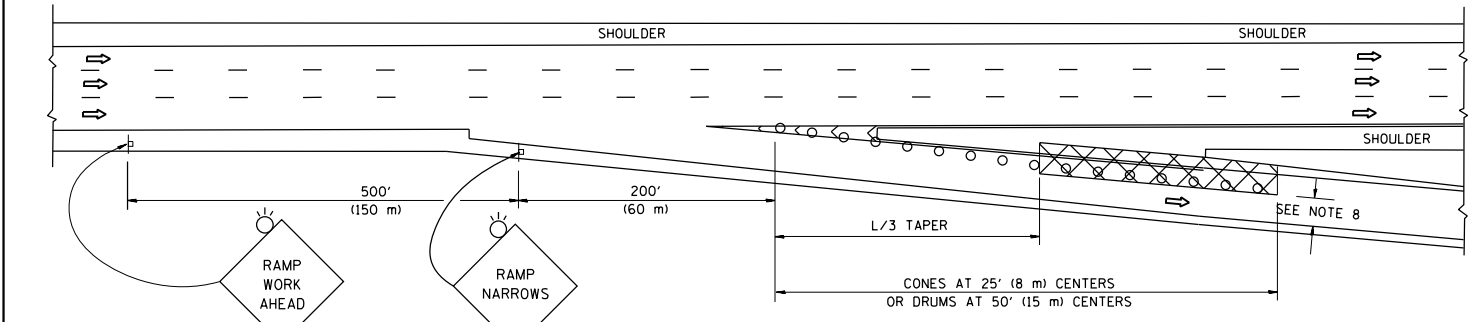
PARTIAL RAMP CLOSURE DETAILS



TYPICAL ENTRANCE RAMP



TYPICAL EXIT RAMP



TYPICAL EXIT RAMP

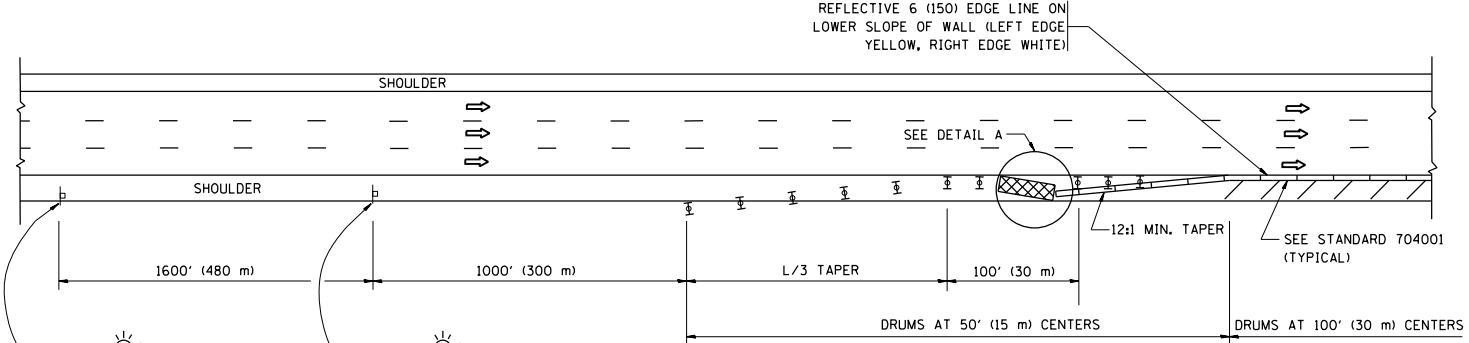
SYMBOLS

- ACTIVE WORK AREA
- SIGN ON PORTABLE OR PERMANENT SUPPORT
- FLAGGER WITH CONTROL SIGN
- TYPE II BARRICADE OR DRUM WITH STEADY BURN MONO-DIRECTIONAL LIGHT
- CONE, DRUM OR BARRICADE
- IMPACT ATTENUATOR OF TYPE AND TEST LEVEL SPECIFIED

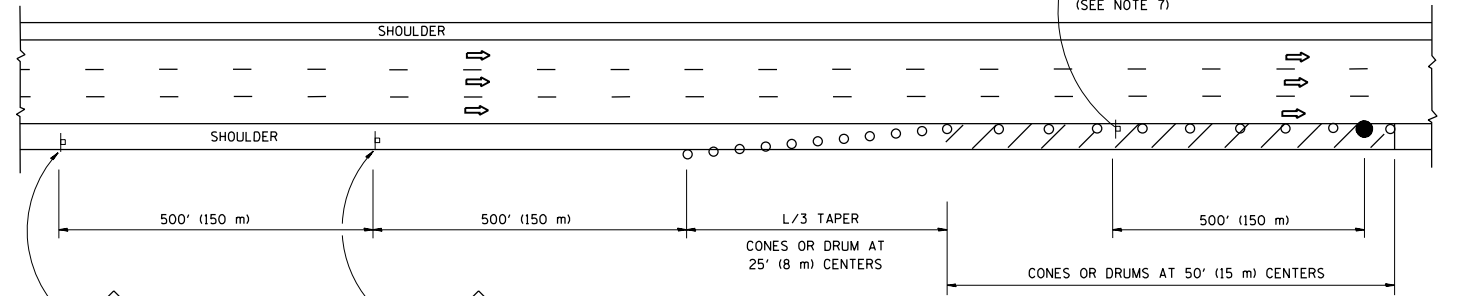
GENERAL NOTES

- THE "L" DISTANCE EQUALS:
SPEED LIMIT FORMULAS
45 mph (80 km/h) METRIC ENGLISH
OR GREATER: L=0.65(W)(S) L=(W)(S)
W = WIDTH OF OFFSET IN FEET (METERS)
S = NORMAL POSTED SPEED MPH (KM/H)
- PLASTIC DRUMS WITH HIGH PERFORMANCE REFLECTIVE SHEETING AND STEADY BURNING LIGHTS ARE REQUIRED FOR ALL NIGHTTIME CLOSURES.
- ALL SIGNS SHALL BE POST MOUNTED IF THE CLOSURE TIME EXCEEDS FOUR DAYS.
- FLASHING LIGHTS SHALL BE USED DURING THE HOURS OF DARKNESS AND SHALL BE INSTALLED ABOVE THE FIRST TWO SETS OF SIGNS.

SHOULDER CLOSURE DETAILS

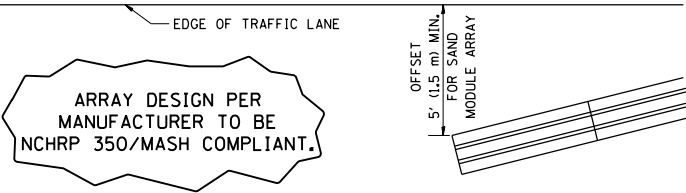


PERMANENT SHOULDER CLOSURE



DAYTIME SHOULDER CLOSURE

- THIS DETAIL IS USED WHERE:
- VEHICLES, EQUIPMENT, WORKERS OR THEIR ACTIVITIES ENCROACH IN AN AREA CLOSER THAN 15' (4.5 m) TO THE EDGE OF PAVEMENT FOR A PERIOD IN EXCESS OF 15 MINUTES.



DETAIL "A"
IMPACT ATTENUATOR, TEMPORARY
(SEE NOTE 5)

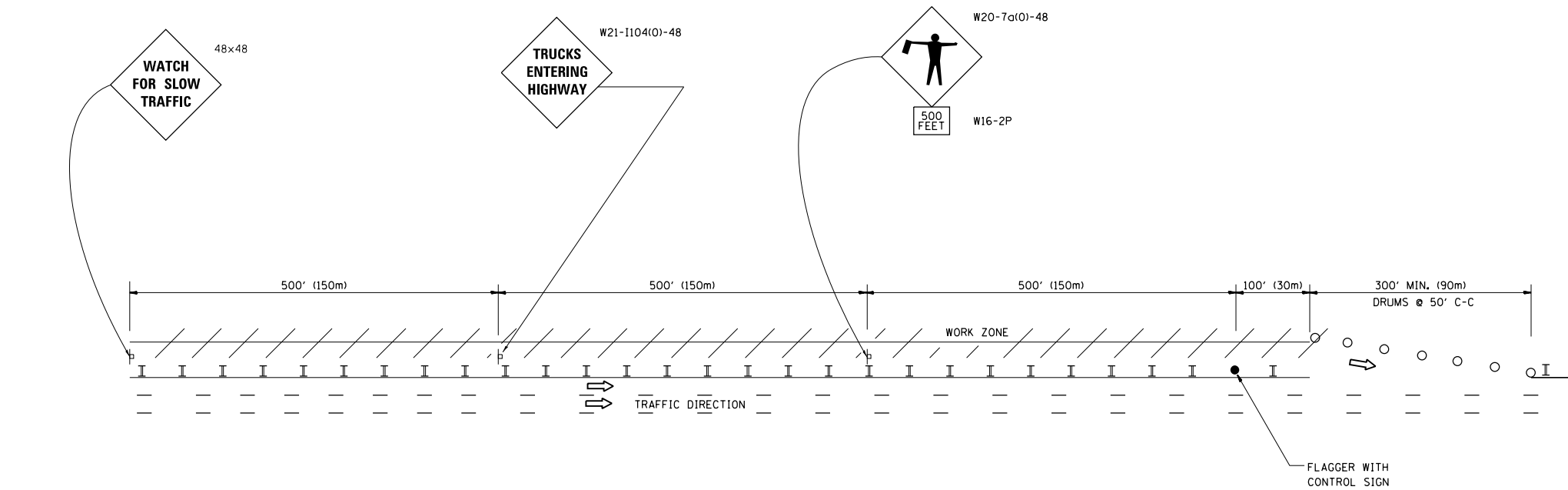
- THE IMPACT ATTENUATOR, TEMPORARY IS NOT REQUIRED WHEN THE TEMPORARY CONCRETE BARRIER WALL IS PROTECTED BY OR IS TIED INTO THE EXISTING GUARDRAIL. IF OFFSET IS LESS THAN 5 FEET USE NARROW USE TYPE DEVICE TO MEET NCHRP350/MASH.
- AUTHORIZATION FROM THE DISTRICT'S BUREAU OF TRAFFIC IS REQUIRED FOR ALL FREEWAY CLOSURES.
- THE FLAGGER AND FLAGGER SIGN ARE REQUIRED AT THE ABOVE WORK SITES WHEN:
a. FOUR OR MORE WORK VEHICLES ENTER THE TRAFFIC LANES IN A ONE HOUR PERIOD.
b. THE WORK AVTIVITY REQUIRES FREQUENT ENCROACHMENT INTO THE LANE OPEN TO TRAFFIC.
THE FLAGGER SHALL BE STATIONED APPROXIMATELY 100' (30 m) TO 200' (60 m) IN ADVANCE OF THE WORKERS.
- 12' MIN. WIDTH TANGENT SECTION
16' MIN. WIDTH CURVE SECTION.

ALL DIMENSIONS ARE IN INCHES (MILLIMETERS) UNLESS OTHERWISE SHOWN.

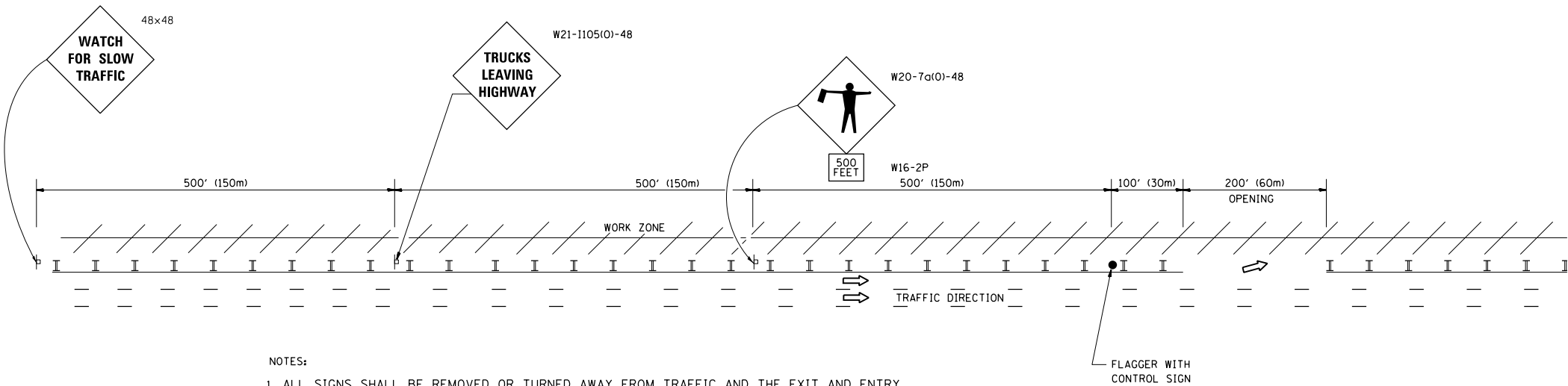
FILE NAME =	USER NAME = diazo	DESIGNED -	REVISED - J.A.F. 12-06	STATE OF ILLINOIS DEPARTMENT OF TRANSPORTATION	TRAFFIC CONTROL DETAILS FOR FREEWAY SHOULDER CLOSURES AND PARTIAL RAMP CLOSURES	F.A.I. RTE.	SECTION	COUNTY	TOTAL SHEETS	SHEET NO.
p:\11084EBID\INTEG\Illinois.gov\PI\DOT\Documents\DOT Offices\District 1\Projects\DI293\Drawings\Design\DWG\Std.dgn		CHECKED -	REVISED - S.P.B. 01-07			90	2017-026BP	COOK	21	20
		PLOT SCALE = 100.0000' / in.	REVISED - S.P.B. 12-09			TC-17		CONTRACT NO. 62F42		
		PLOT DATE = 8/22/2017	REVISED - M.D. 06-13			FED. ROAD DIST. NO. 1 ILLINOIS FED. AID PROJECT				
						SCALE: NONE	SHEET NO. 1 OF 1 SHEETS	STA.	TO STA.	

SIGNING FOR FLAGGING OPERATIONS AT WORK ZONE OPENINGS

WORK ZONE EXIT OPENING



WORK ZONE ENTRY OPENING



NOTES:

1. ALL SIGNS SHALL BE REMOVED OR TURNED AWAY FROM TRAFFIC AND THE EXIT AND ENTRY OPENINGS SHALL BE CLOSED WHEN THE FLAGGING OPERATION CEASES. NON OPERATING EQUIPMENT SHALL COMPLY WITH ARTICLE 701.11
2. WORK ZONE OPENINGS SHALL BE A MINIMUM OF ONE HALF MILE APART AND A MINIMUM OF ONE QUARTER MILE FROM ALL ENTRANCE AND EXIT RAMP.
3. EXITING THE WORK ZONE AT ANY PLACE OTHER THAN AT A WORK ZONE EXIT OPENING WILL BE PROHIBITED.
4. ALL VEHICLES SHALL ENTER THE WORK ZONE AT ENTRY OPENINGS, USING THEIR TURN SIGNALS TO WARN MOTORISTS
5. FLAGGERS SHALL NOT STOP TRAFFIC OR DIRECT TRAFFIC INTO AN ADJACENT LANE.

ALL DIMENSIONS ARE IN INCHES (MILLIMETERS)
UNLESS OTHERWISE SHOWN

FILE NAME =	USER NAME = diazio	DESIGNED -	REVISED - J.A.F. 02-06	STATE OF ILLINOIS DEPARTMENT OF TRANSPORTATION	FREeway/EXPRESSWAY SIGNING FOR FLAGGING OPERATIONS AT WORK ZONE OPENINGS ON FREEWAYS/EXPRESSWAYS	SCALE: NONE	SHEET NO. 1 OF 1 SHEETS	STA. TO STA.	F.A.I. RTE.	SECTION	COUNTY	TOTAL SHEETS	SHEET NO.
p:\1\11084EBIDINTEG\Illinois.gov\PWIDOT\Documents\IDOT Offices\District 1\Projects\DI2930\Drawings\Design\DistStd.dgn			REVISED - S.P.B. 01-07						90	2017-026BP	COOK	21	21
	PLOT SCALE = 100.0000' / in.	CHECKED -	REVISED - S.P.B. 12-09						TC-18		CONTRACT NO. 62F42		
	PLOT DATE = 8/22/2017	DATE -	REVISED - M.D. 06-13						FED. ROAD DIST. NO. 1 ILLINOIS FED. AID PROJECT				