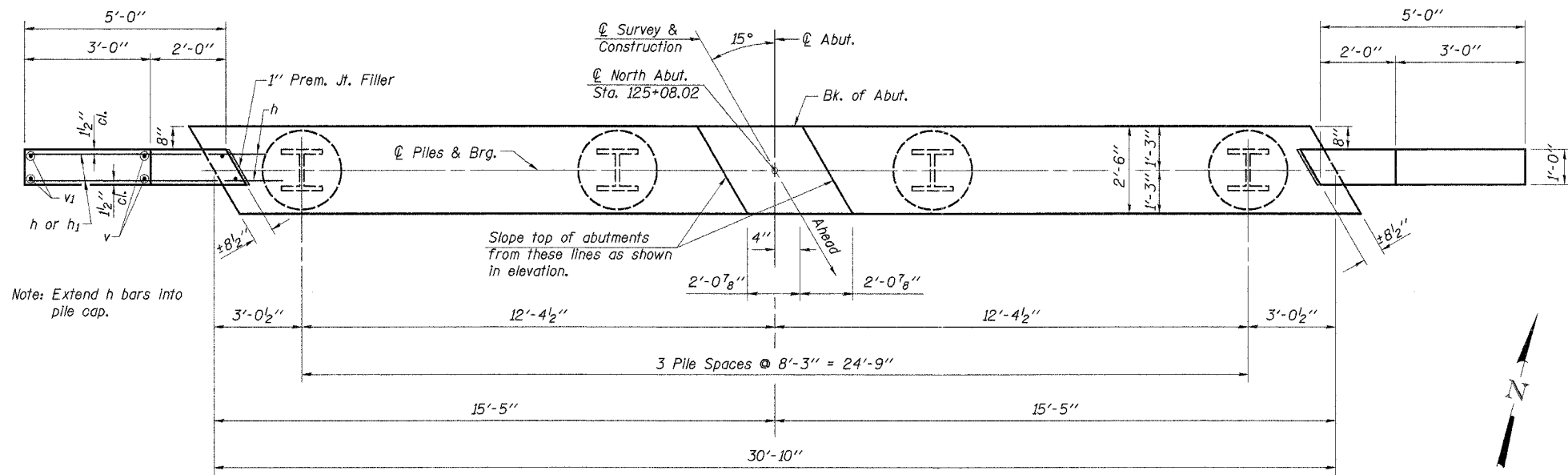
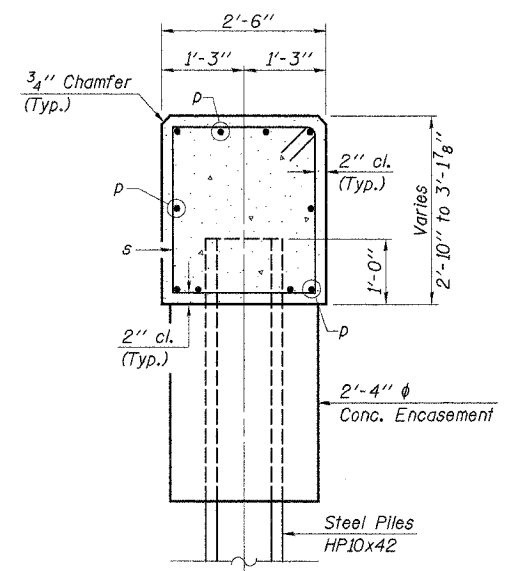


ROUTE NO.	SECTION	COUNTY	TOTAL SHEETS	SHEET NO.
C.H. 16	06-00084	MARSHALL	15	10
F.A.S. 365	-00-BR			
ILLINOIS		FED. AID PROJ.		

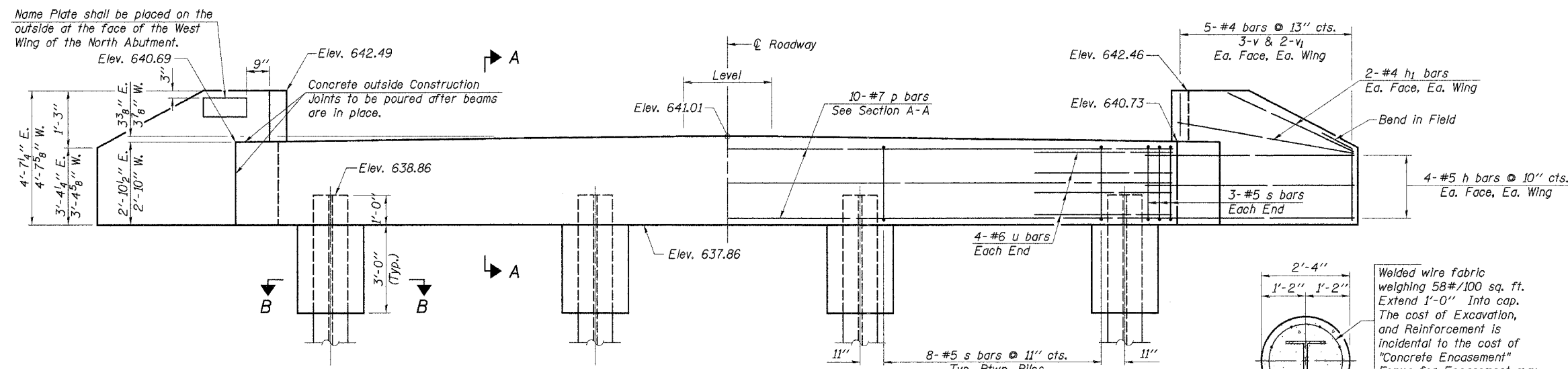
CONTRACT NO. 89409



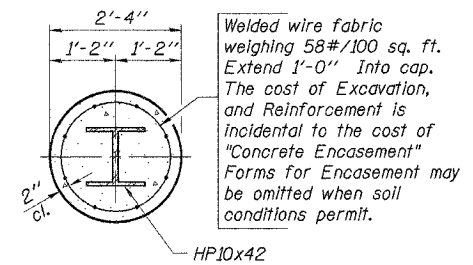
PLAN



SECTION A-A



ELEVATION  
(Looking Northwest)



SECTION B-B

**NORTH ABUTMENT  
BILL OF MATERIAL**

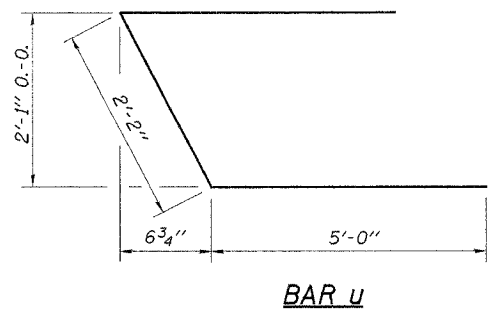
Bar	No.	Size	Length	Shape
h	16	#5	7'-0"	—
h1	8	#4	4'-9"	—
p	10	#7	30'-6"	—
s	30	#5	10'-3"	□
u	8	#6	12'-2"	—
v	12	#4	4'-4"	—
v1	8	#4	3'-6"	—
Concrete Structures		Cu. Yd.	10.2	
Reinforcement Bars		Pound	1,290	
Name Plates		Each	1	
Test Pile Steel HP10x42		Each	1	
Steel Piles HP10x42		Foot	72	
Concrete Encasement		Cu. Yd.	1.9	

**PILE DATA**

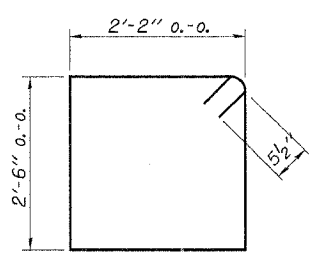
Type..... Steel Piles HP10x42  
 No. Req'd. (2 Abuts.)..... 4\*  
 Design Capacity..... 30 Tons/Pile  
 Driven Capacity..... 45 Tons/Pile  
 Est. Length..... 24 Feet/Pile

\*Includes 1 Test Pile to be driven in a permanent location at the North Abutment.

DESIGNED	F.J.S.
CHECKED	S.F.M.
DRAWN	S.A.P.
CHECKED	S.F.M.



BAR u



BAR s

**NORTH ABUTMENT**  
 COUNTY HIGHWAY 16  
 SECTION 06-00084-00-BR  
 MARSHALL COUNTY  
 STATION 125+55

4440 ASH GROVE SPRINGFIELD, IL 62711 (217) 783-8600 www.fehr-graham.com	FEHR-GRAHAM & ASSOCIATES, LLC ENGINEERING AND SCIENCE CONSULTANTS	JOB NO.: 46813 FILE: 0423ABUT1.DGN DATE: 04/11/06
--	--	---